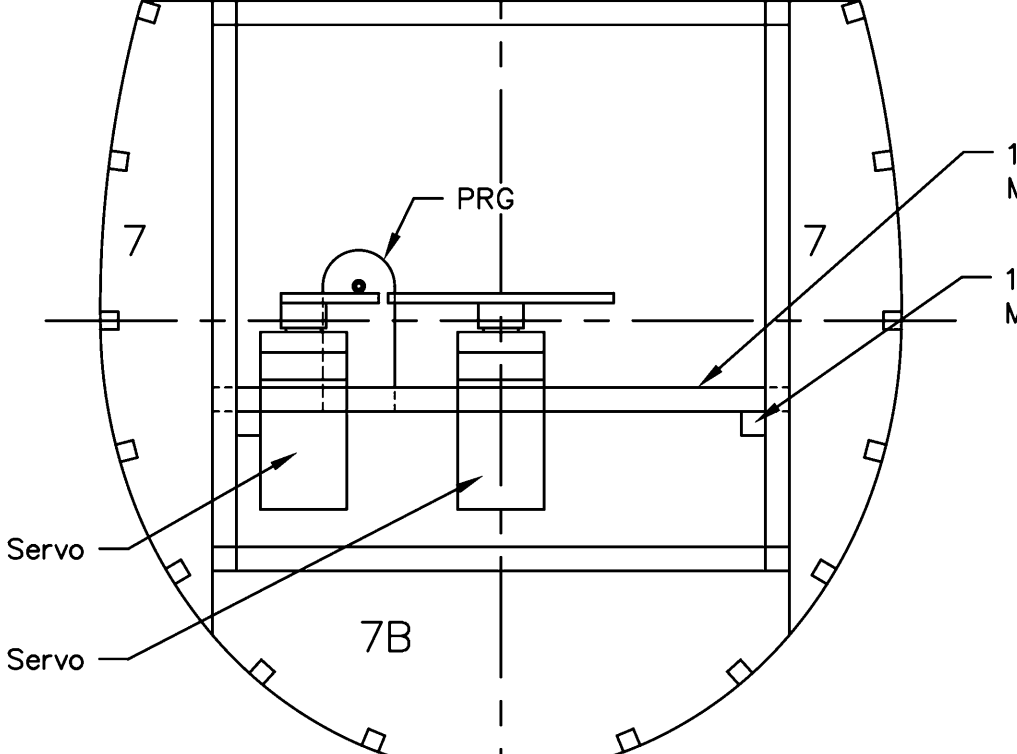
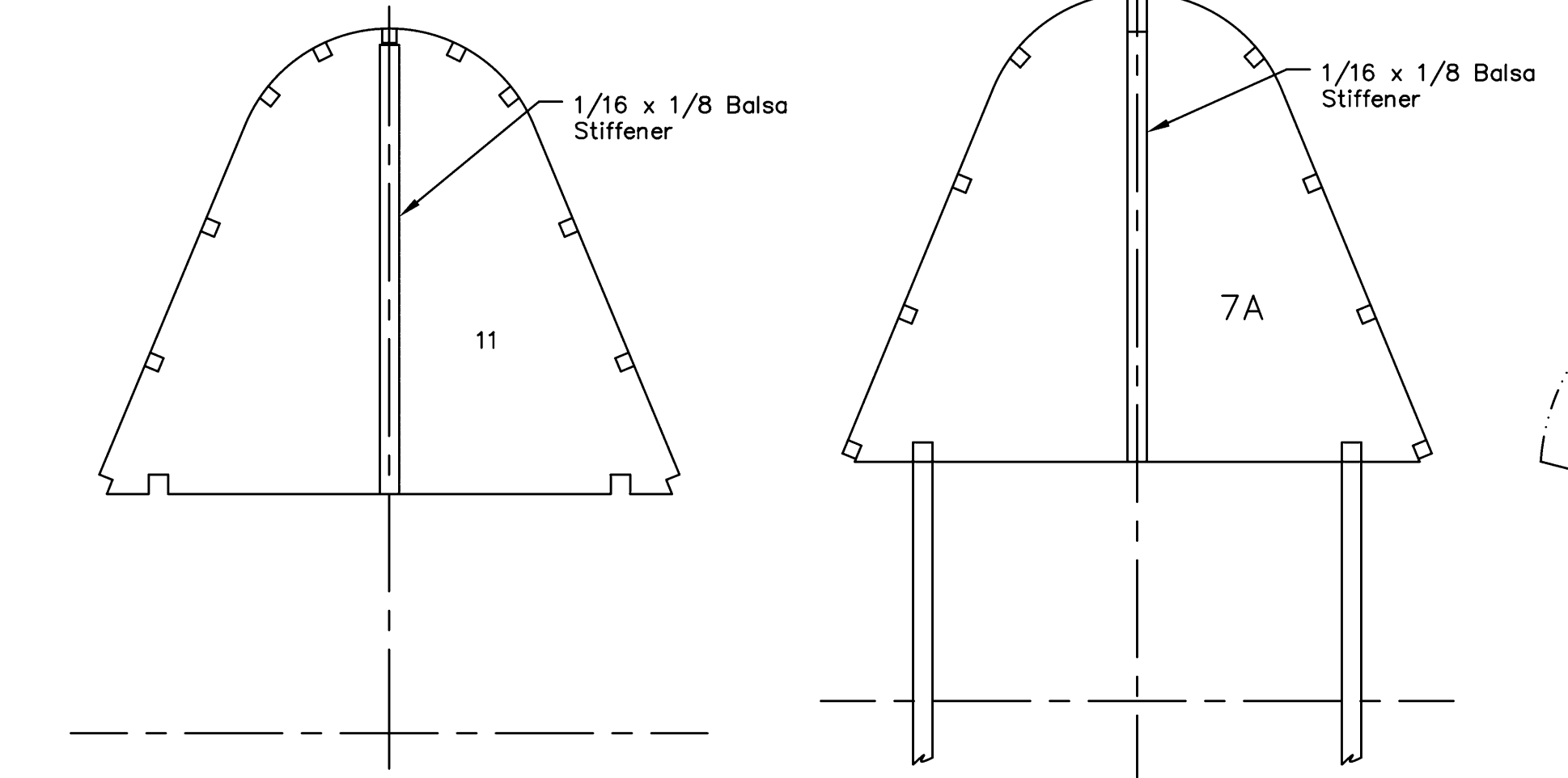
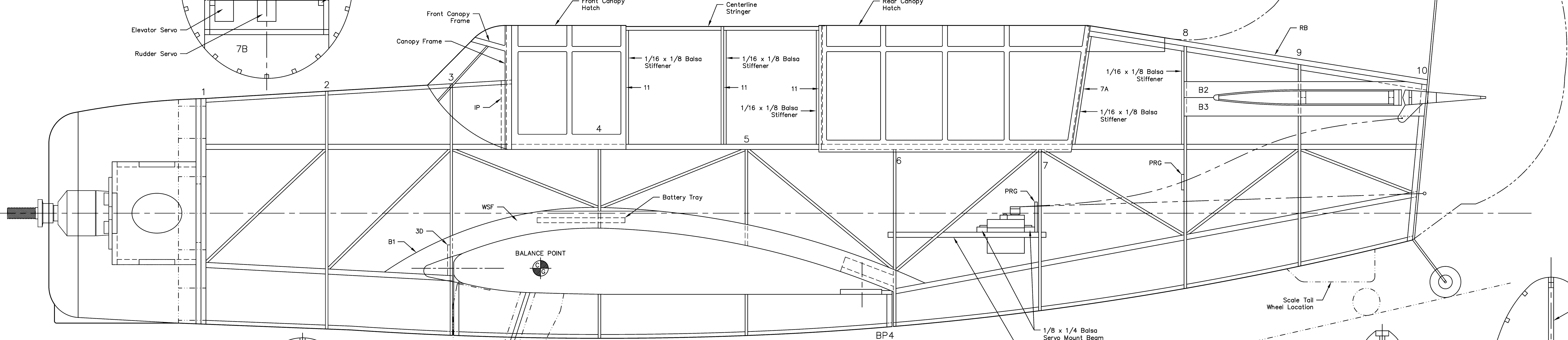


Note: Place Washers Under the Motor Mount on the Left Side to get 1.5 Degrees of Right Thrust

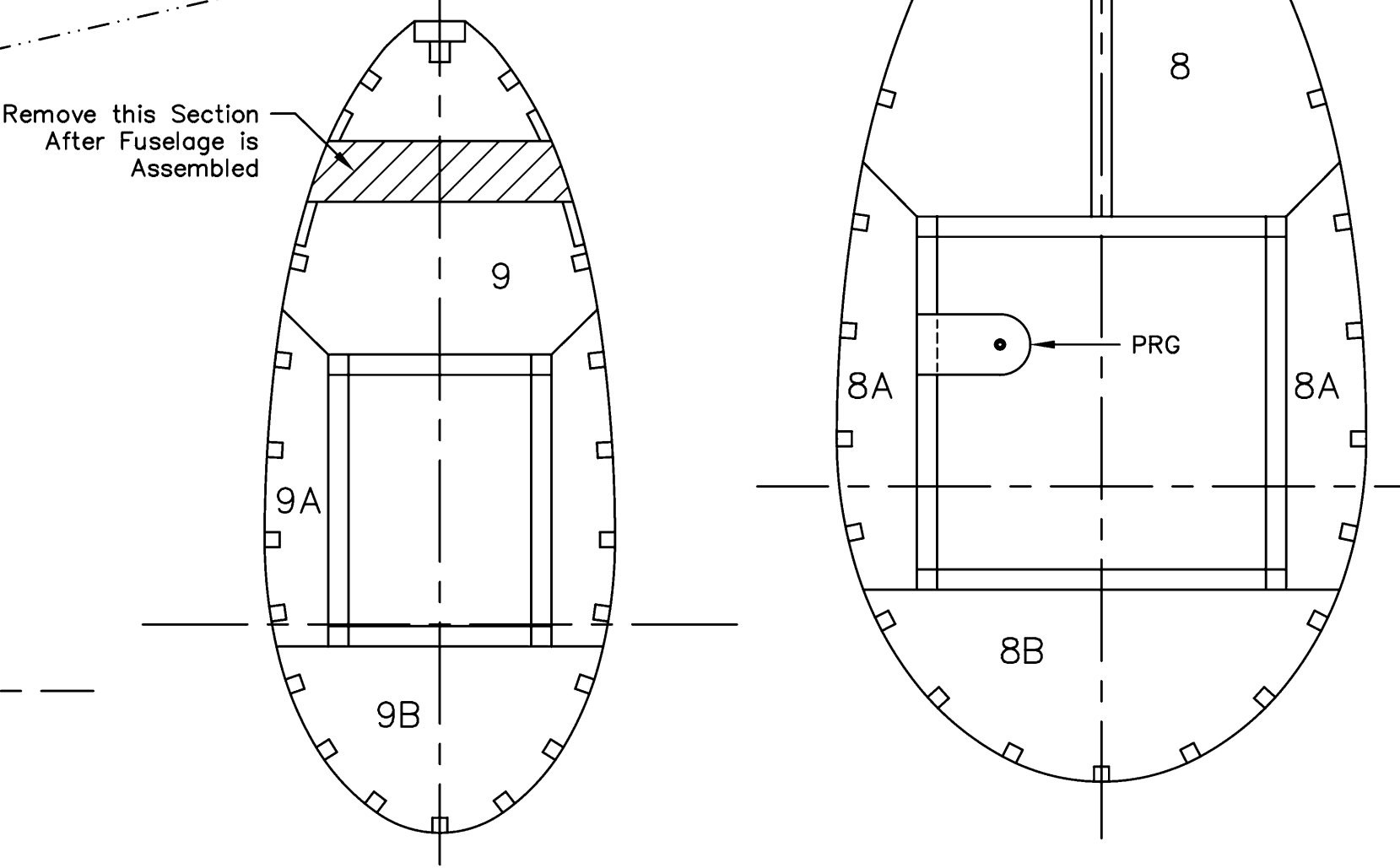
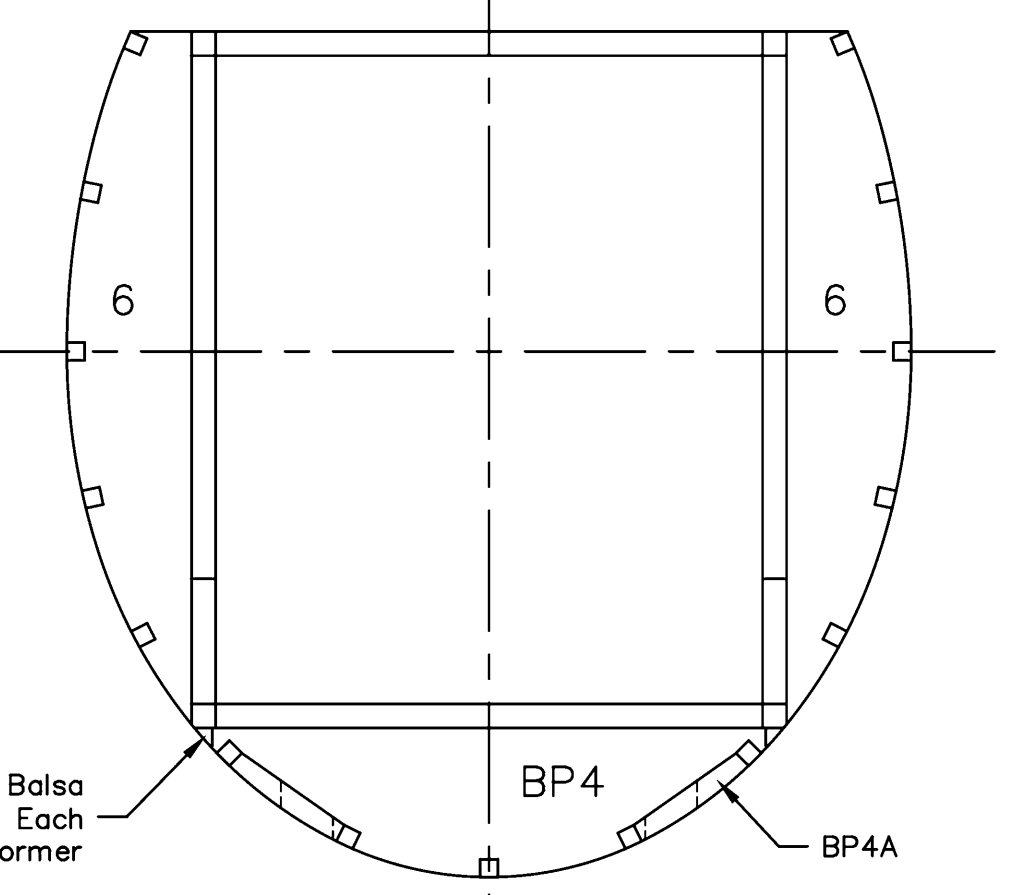
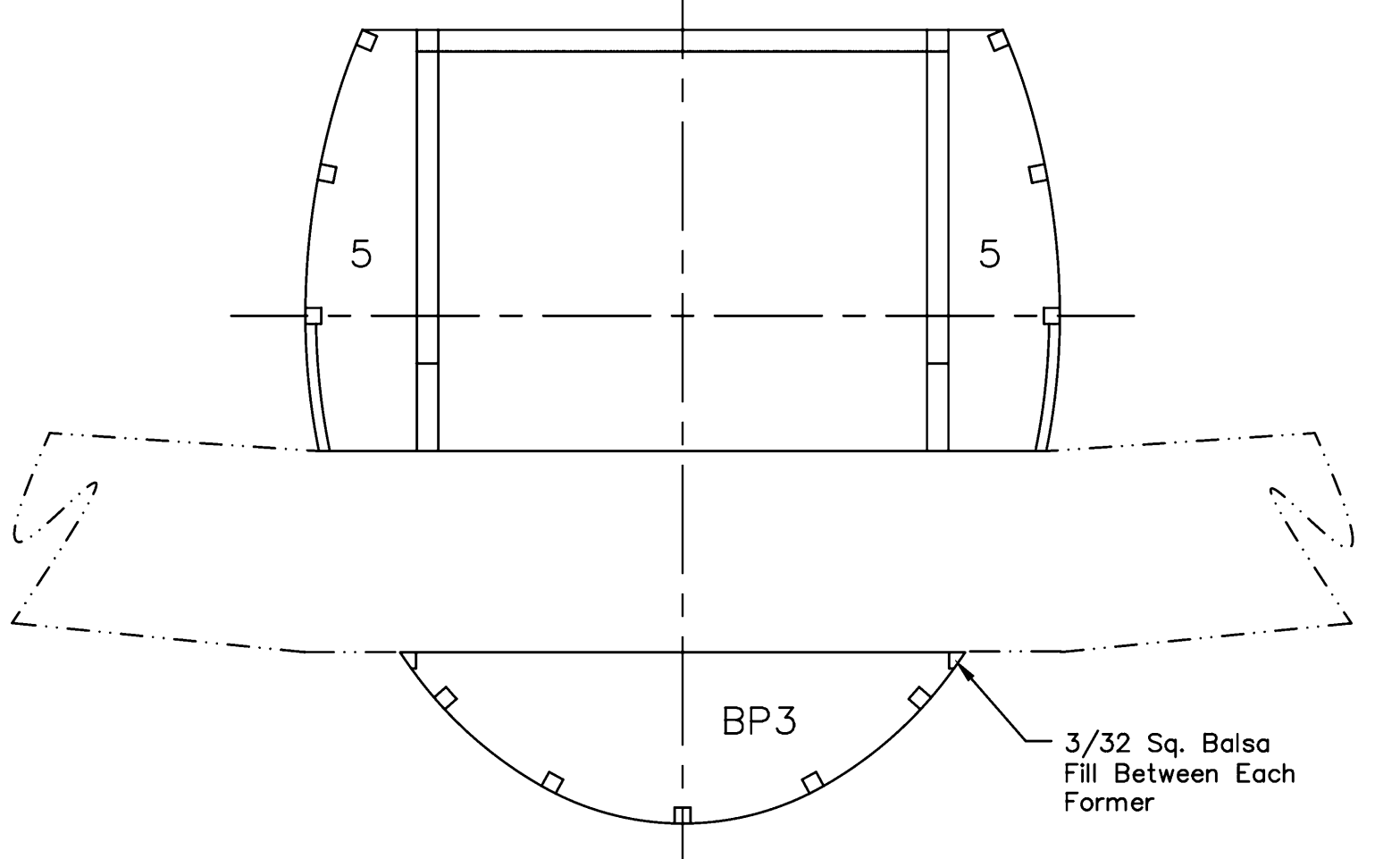
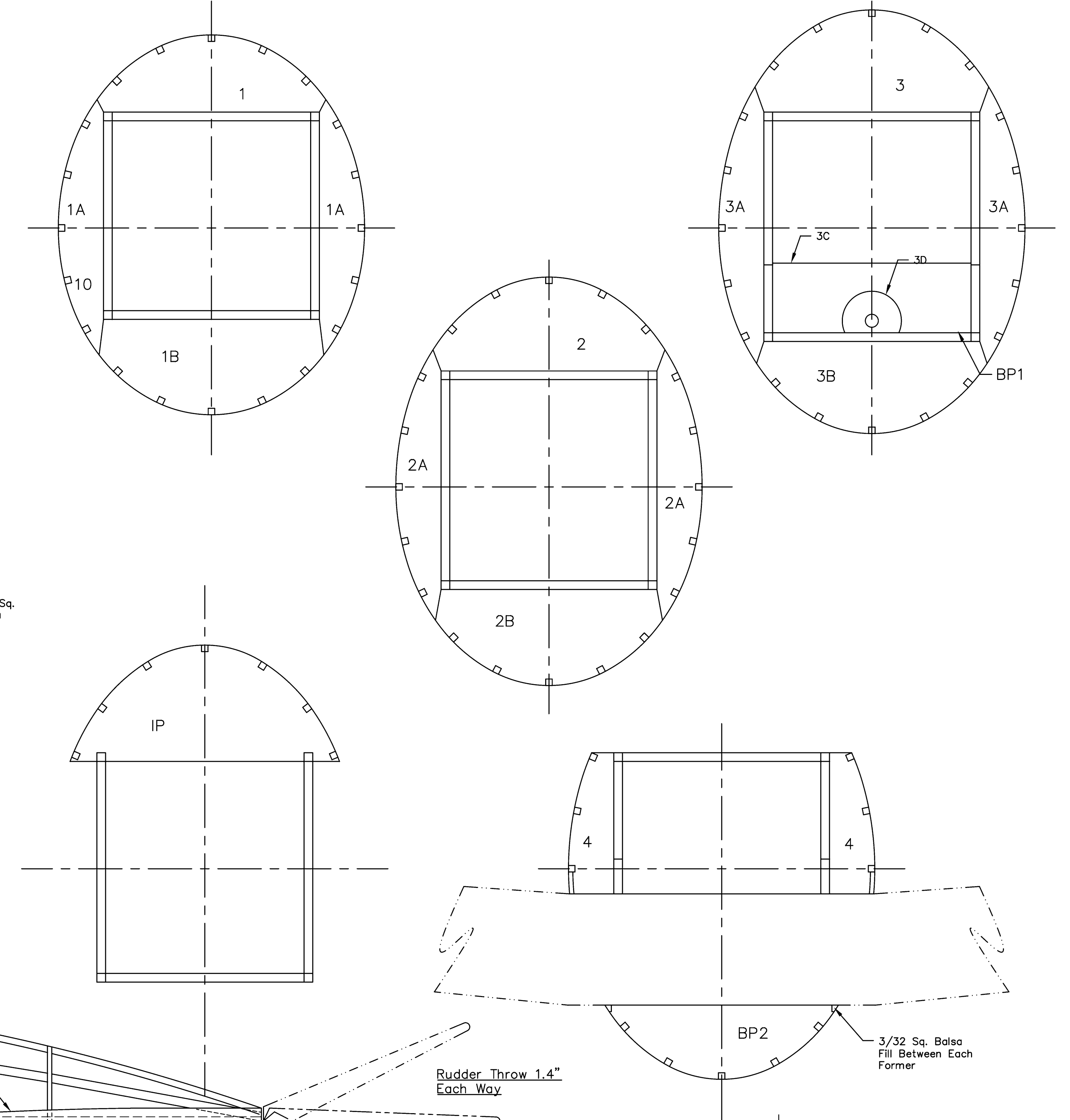


Note: The Fuselage Stringers have been Omitted from the Drawing to Reduce the Clutter. When the Stringers are Installed their Routing will Become Obvious

Note: The Rudder is Controlled Using Pull/Pull Cables. The Elevator is Controlled by a .025 Steel Pushrod in a 1/32 I. D. Plastic Tube. Support the Tube at the Exit Point with a 1/16 Balsa Guide Between the Stringers, and at the Servo Rail and 1 Point in Between Using the Pushrod Guides (PRG).



Note: All Fuselage Stringers are 3/32 Sq. Balsa. Start with the Centerline on each side and Allow the Stringers to Follow the Obvious Path Along the Formers. Then Work up and Down Until All of the Stringers are in Place.

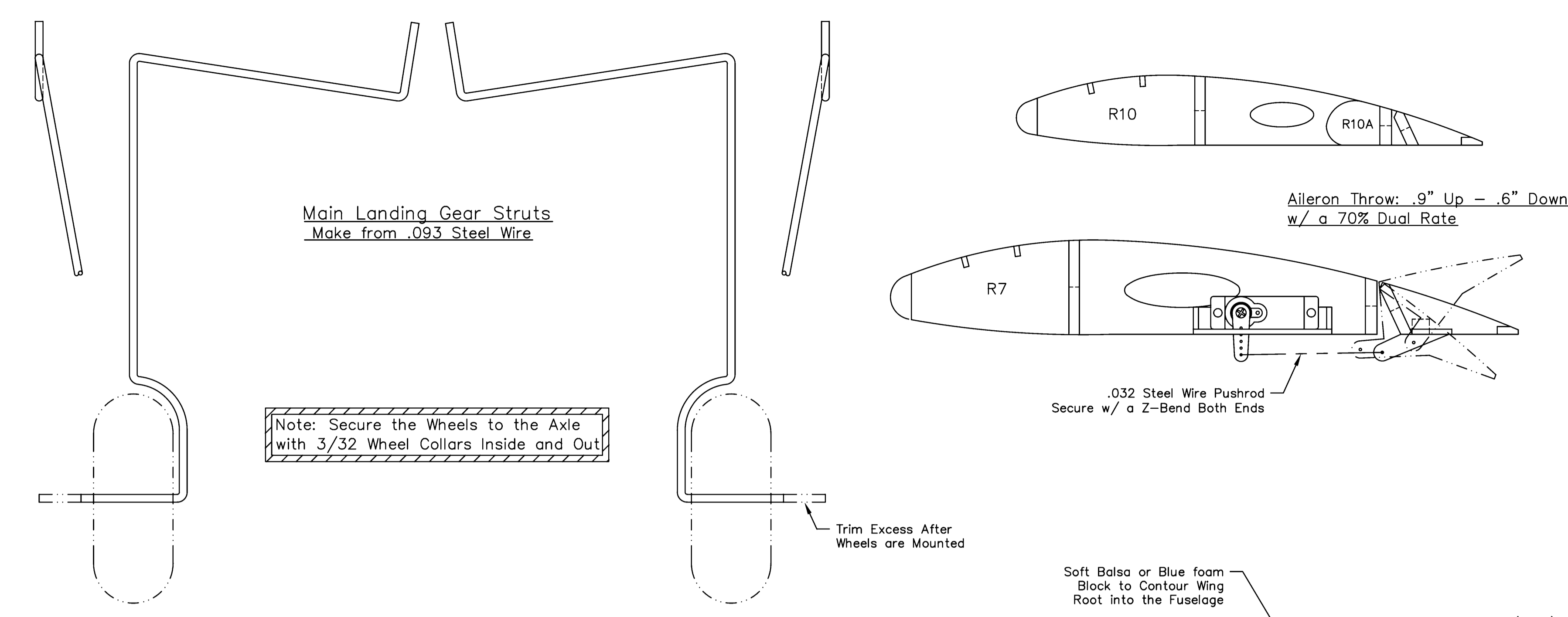
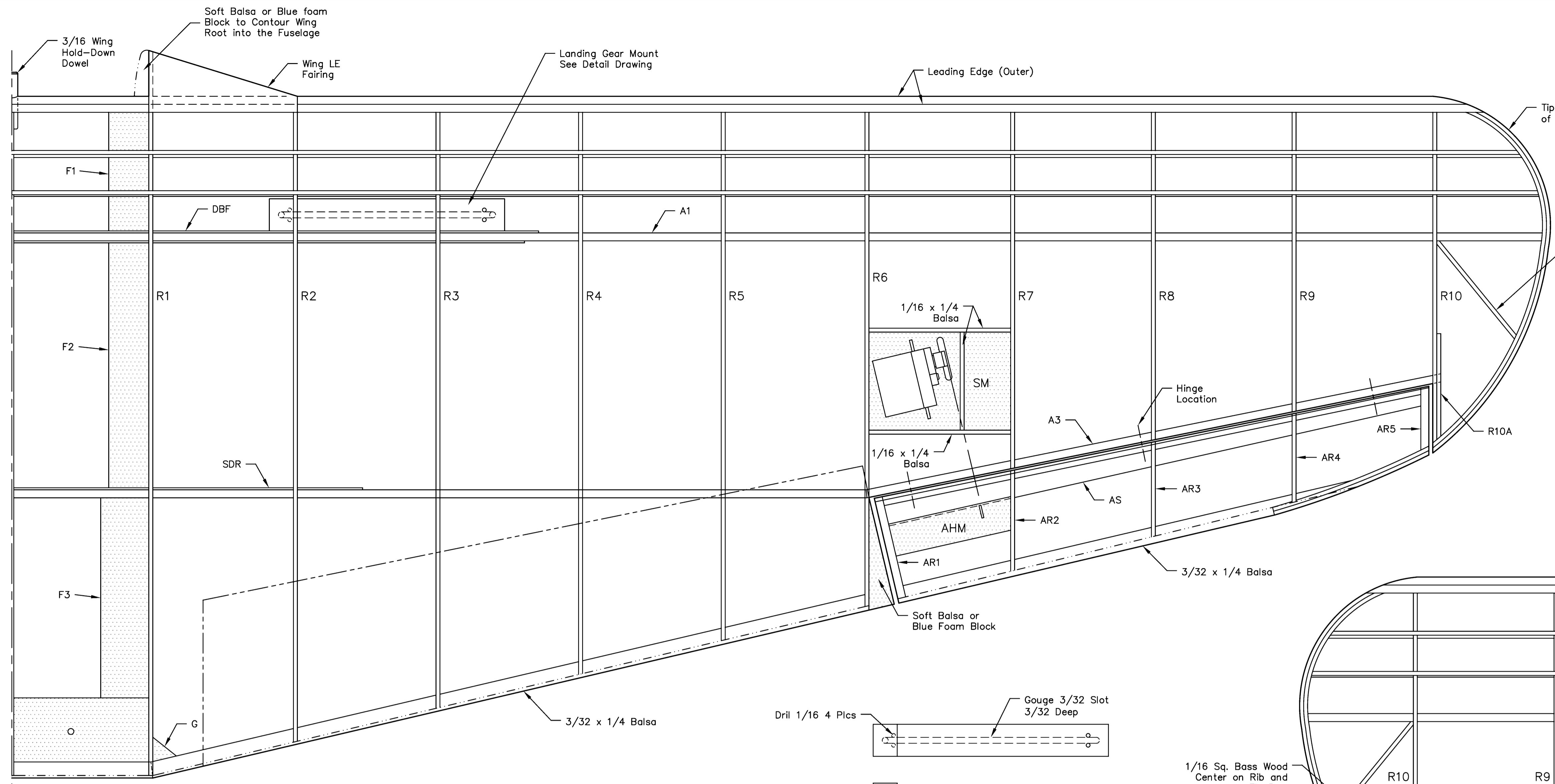


Curtiss SB2C Helldiver

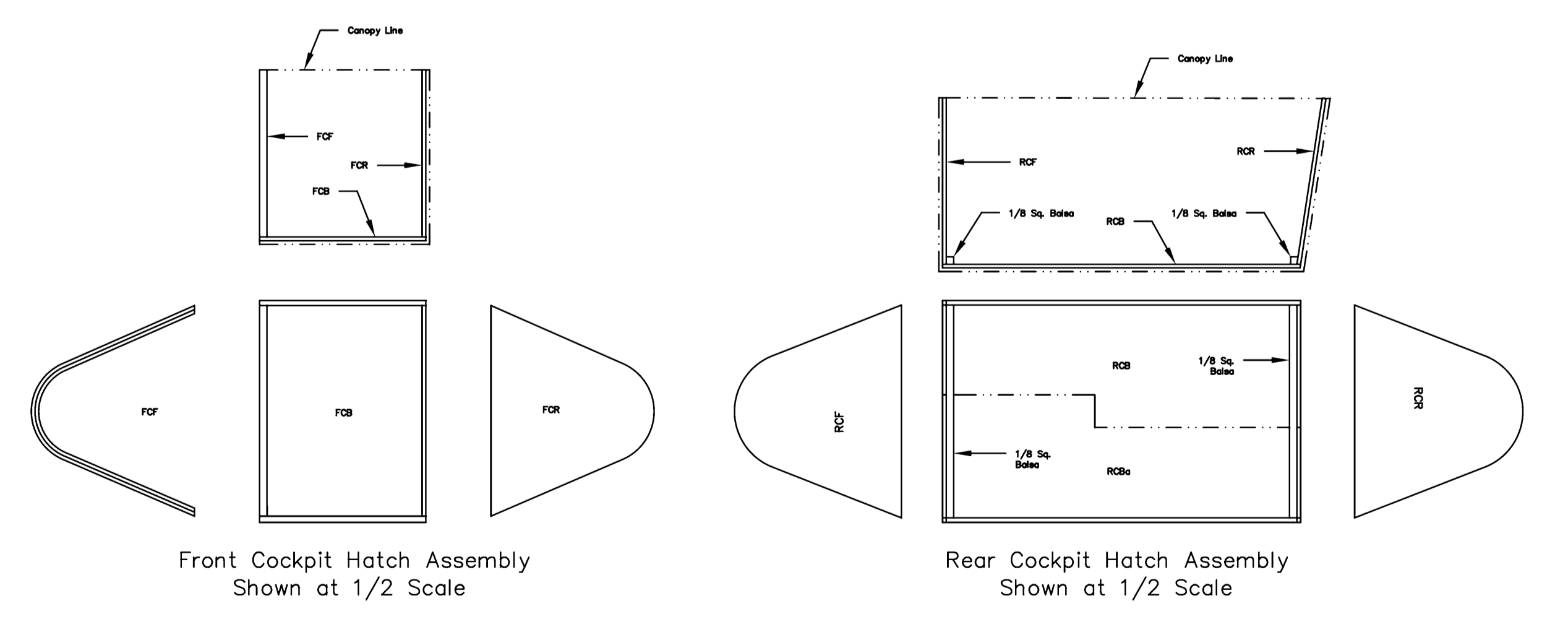
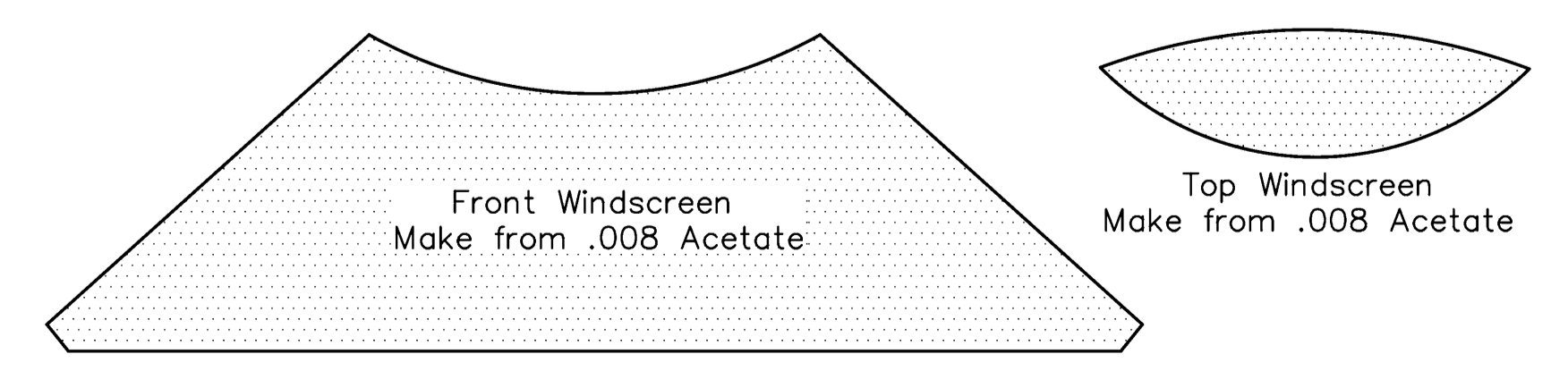
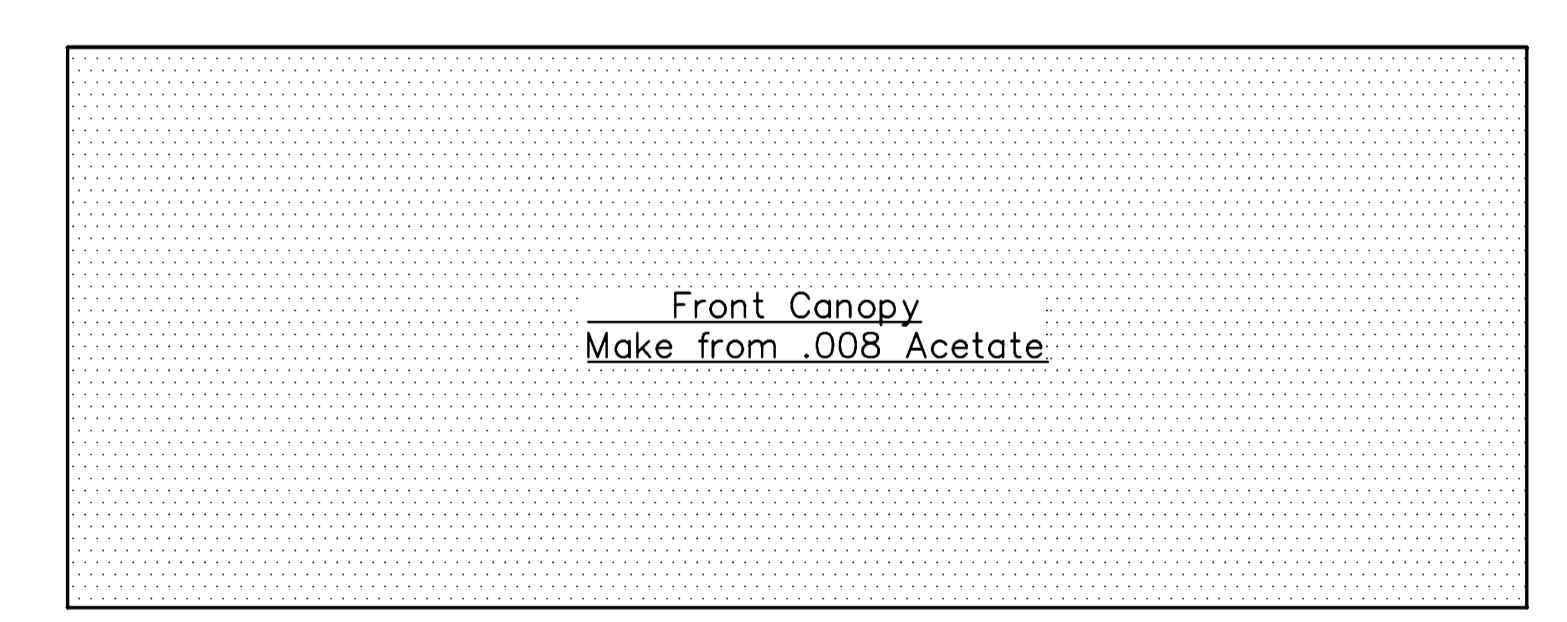
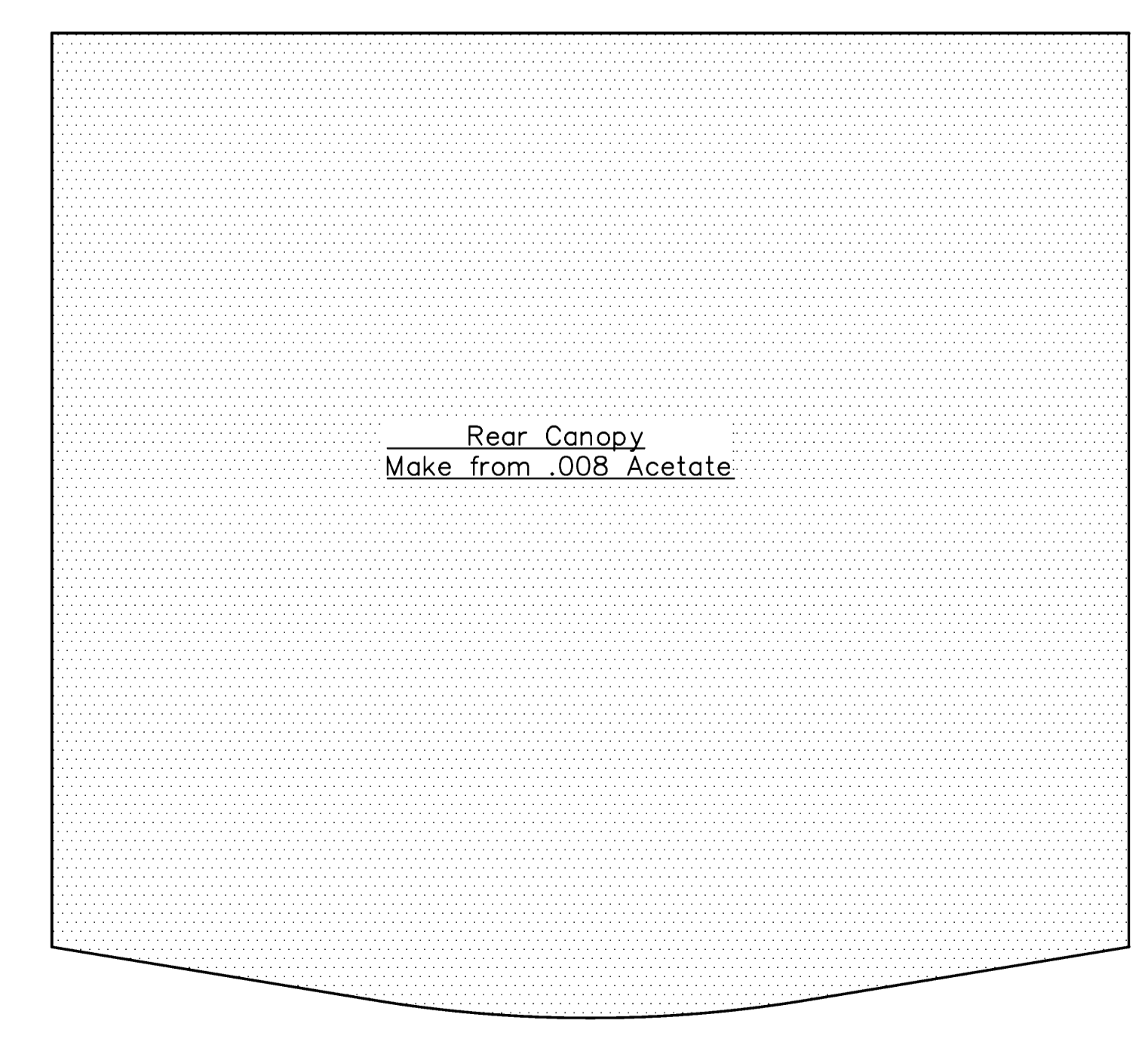
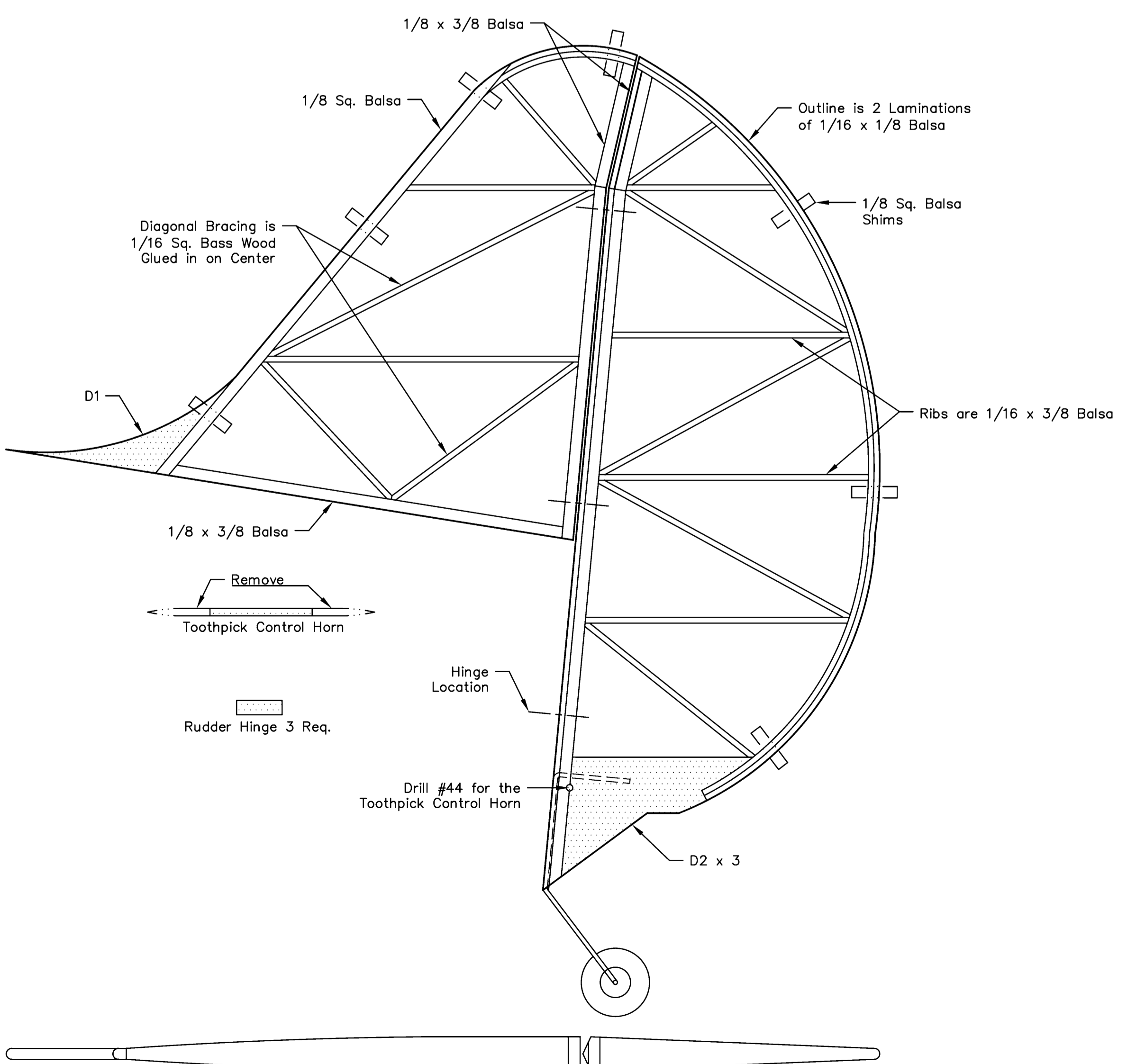
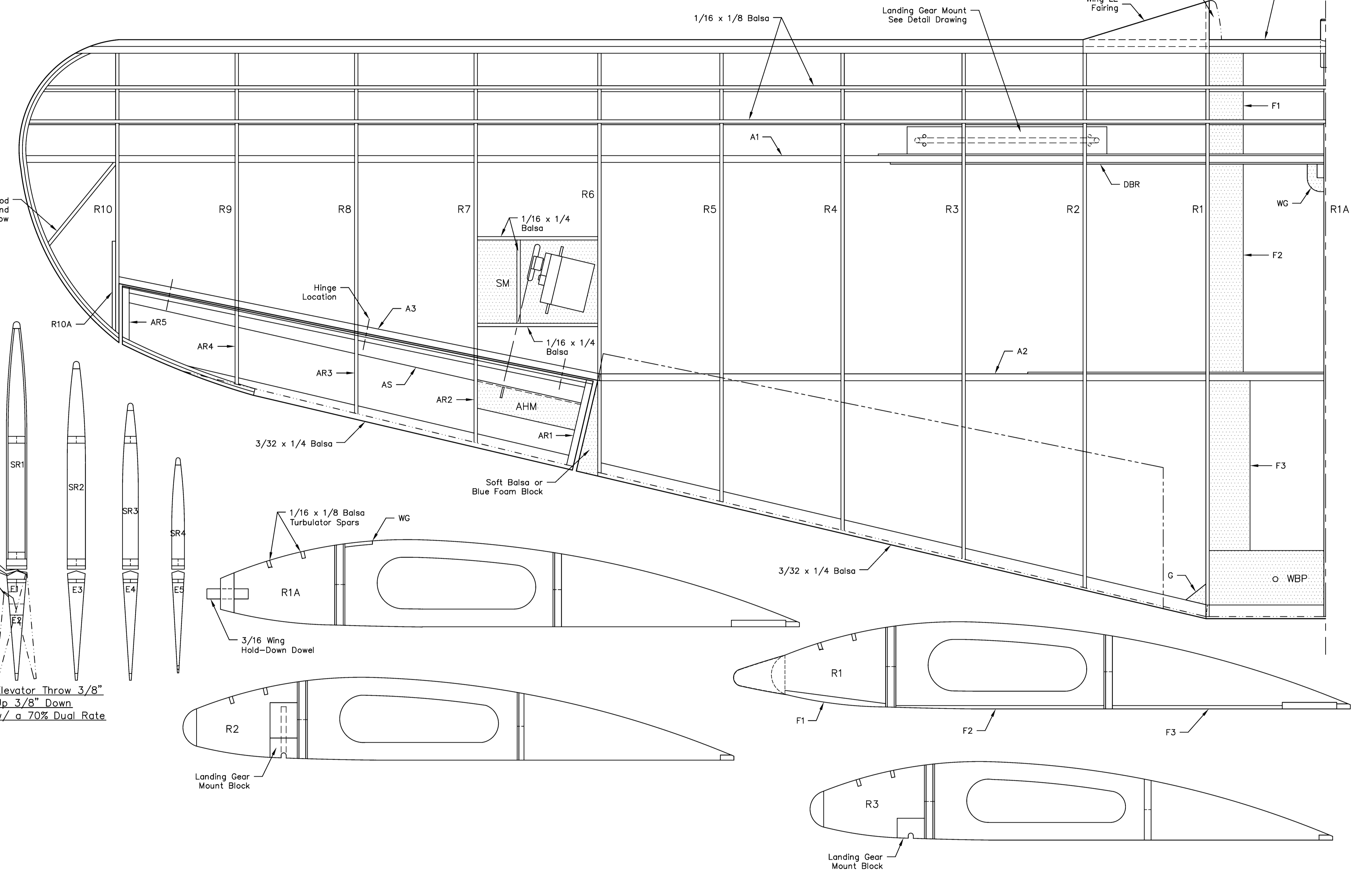
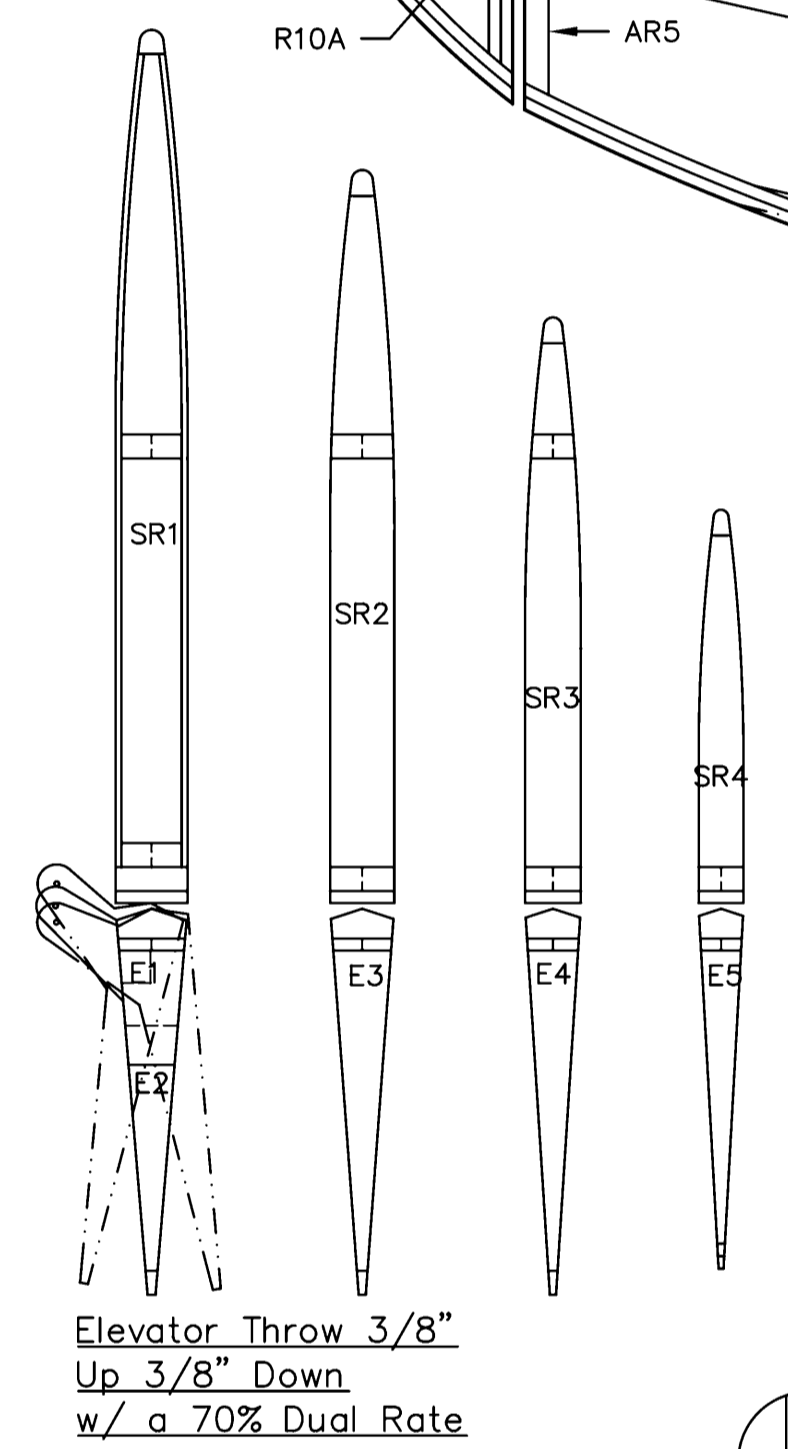
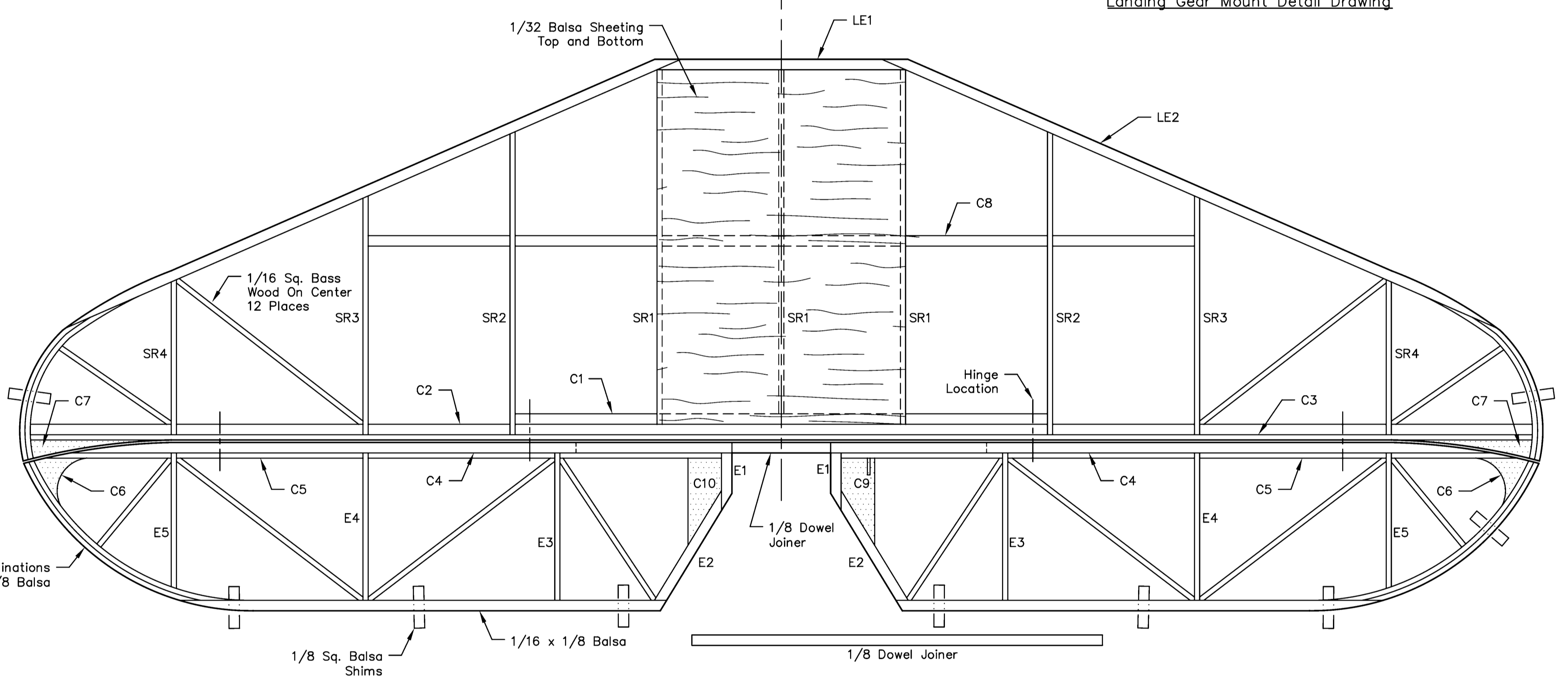
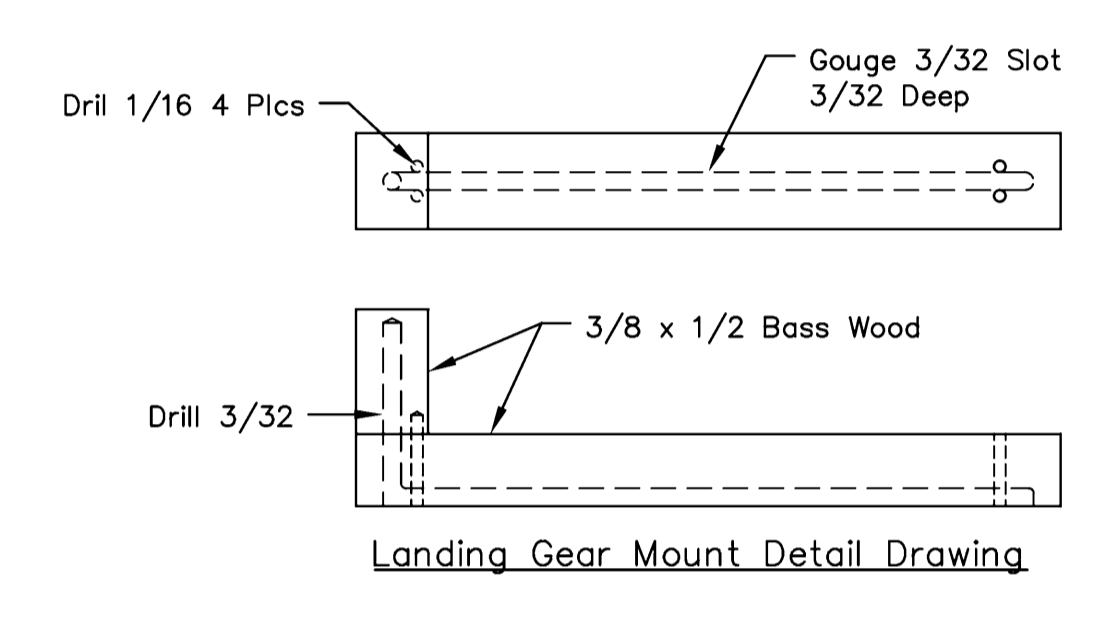
Span: 48" Length: 37.7"

Wing Area: 396 Sq. In. Wt: 24.3 oz.

Designed by: Pat Tritle for Model Aviation Magazine



Note: F1, F2, & F3 are Glued in Flush with the bottom of R1



Note: Assemble the Canopy Frames Directly on the Fuselage Frame Assembly. Cover the Cockpit Openings with Waxed Paper to Prevent the Frames from Sticking to the Fuselage During the Assembly Process.
Secure the Frames on the Fuselage with Rare Earth Magnets - 2 for the Front Canopy and 4 for the Rear. Secure the Magnets on Scrap Balsa Pads Glued Between the Fuselage Main Frame and Outer Stringers.

Curtiss SB2C Helldiver	
Span: 48"	Length: 37.7"
Wing Area: 396 Sq. In. Wt: 24.3 oz.	
Designed by: Pat Tritle for Model Aviation Magazine	
Sheet 2 of 3	11-17-2018

