

1/20 SHEET COVERING  
 MAIN SPARS 3/16 x 3/8 BALSAs.

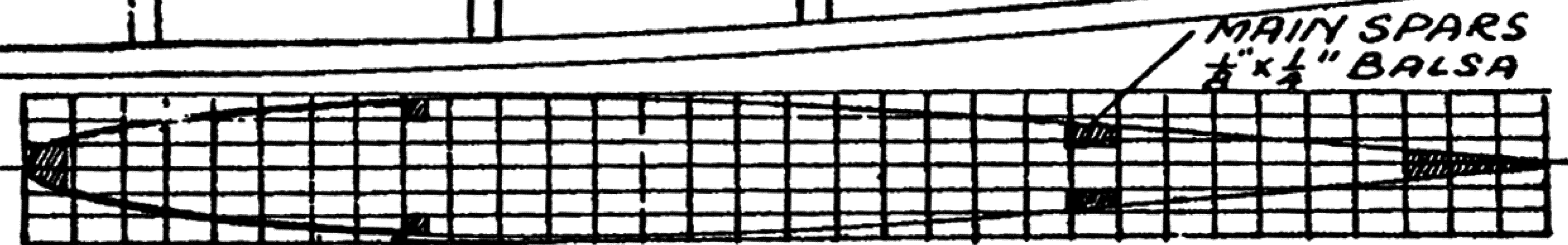
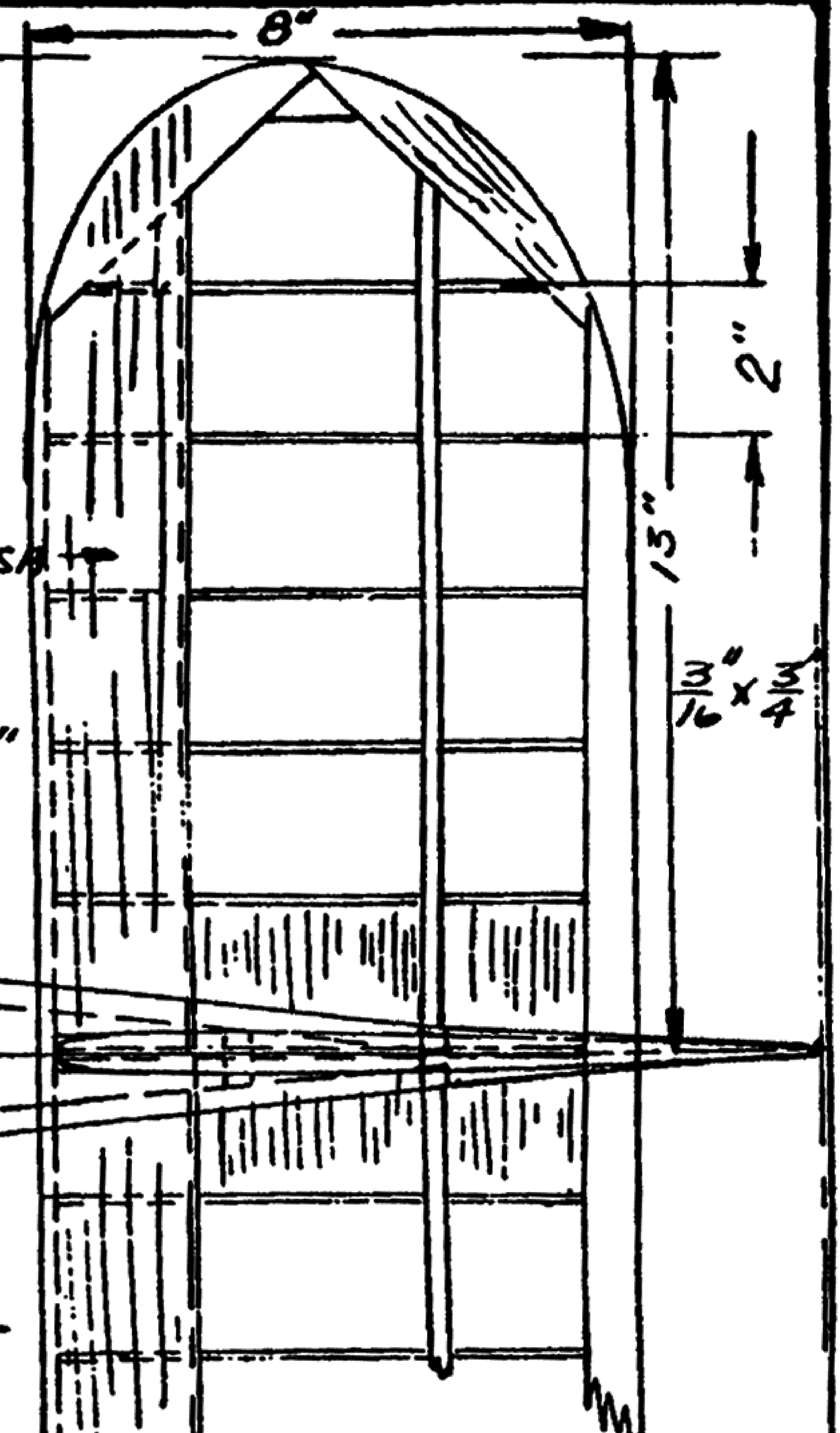
T.E. 5/16 x 1"

1" SHEET BALSAs  
 20

0 2 5 7 10 15 20 30 40 50 60 70 80 90 100  
 CLARK Y ONE HALF FULL SIZE

LEADING EDGE 1/4 x 1/4

MOTOR BEARERS 1/2 x 7/8 BASS  
 BATTERY HATCH BUILT OF 3/32 SHEET



SOLDER EXTENSION TO NEEDLE VALVE

NOSE BLOCK CARVED OF SOFT BALSAs AND HOLLOWED

SHEET SUPPORT 1/8 x 1/8

DIAG. BRACING 3/16 x 3/8

AL. TUBING BOUND TO CROSS MEMBER OF FUSELAGE

FRONT STRUT METAL EARS SOLDERED TO BROWN TANK FASTENED TO SIDES.

2 1/4" B4 B5 B6 3 1/16" 3 1/16" 4 1/2" 4 13/16" 4 1/2" 4 3/4" 4 5/8" 4 3/4" 2 1/8"

1/25 DIAM MUSIC WIRE  
 SCREENED AIR 1/16 SHEET BALSAs COVERING ON FUSELAGE  
 OUTLET

FWD SECTIONS "A" ARE 1/4 BIRCH PLY

1/8 x 3/16 STRINGER

ALL LONGERONS OF 3/8 x 3/8 BALSAs

NOTE: SEC. 1-2-3. ARE COVERED INTERNALLY WITH 3/32 SHEET

— THE "CADET" —  
 BUILT BY DICK HERENROTHER  
 PLANS — B. SHERESHAU  
 DRAWINGS TO 3/16" = 1"

Edit by Hlsat. Free Plan.

