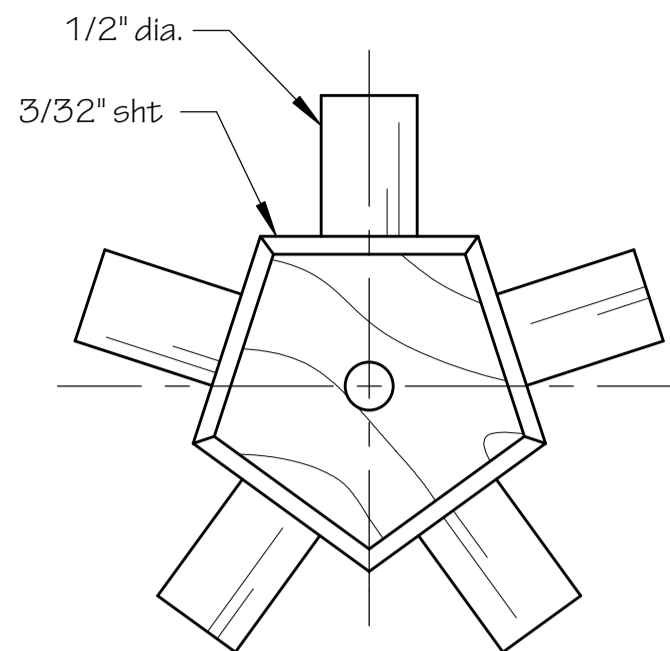
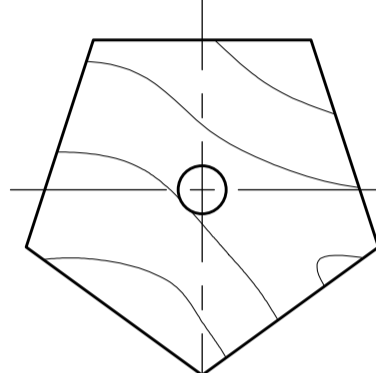


Notch to suit at Final Assembly

3/32" sheet sides x2



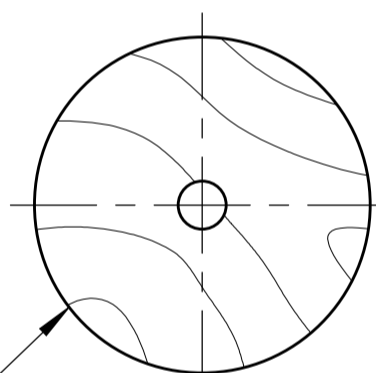
Dummy engine backplate
1/32" ply



Tapered wedge
basswood or ply

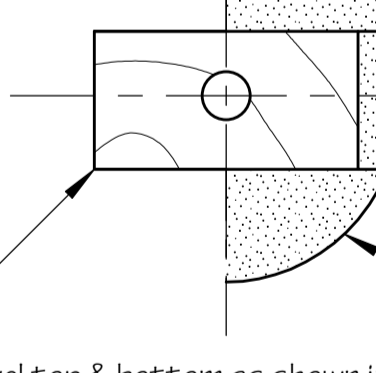
2° DOWN THRUST
E-Flite Park 300
used on prototype

F1
1/16" ply



bevel to suit
nose blocks

F3
1/8" LitePly



bevel top & bottom as shown in Side View

2° RIGHT THRUST

Tapered wedge
basswood or ply

Laminate fuselage sides & nose blocks as shown

ALL WOOD IS BALSA - UNLESS OTHERWISE NOTED

Nose blocks
1/4" sheet - x4

Removable hatch
1/16" sheet

Soft Block - removable
for battery access

F1 F2

3/8" Sq. pine
(or equiv.)

Battery Pack

Soft block

3/32" ply

bevel

Top block - removable

Bottom block - glued in place

Finished contour

Bind & glue

1/4" triangle

1/4" triangle

F4 F4

1/16" sheet
Cockpit floor
(cross grain)

Rx & ESC
here

F5

F5

U/C mounting strips
.025" dural - x4

Retain with screws

2 1/2" vintage wheels

Bind & solder (typ)

Top block

Lower wing

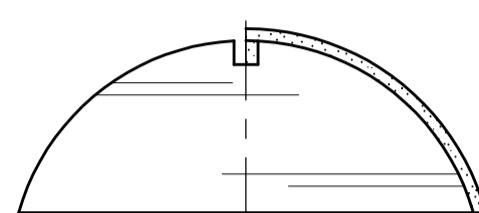
Cabane struts - 14 SWG piano wire (see sht. 2)

Cabane diagonal brace
not shown in this view

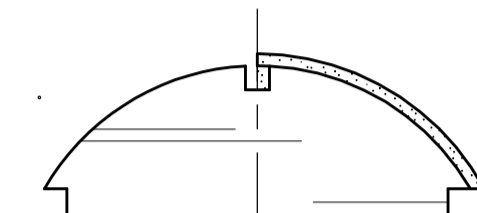
Upper wing mount rails - 14 SWG piano wire - x2

1/32" ply doublers - x2

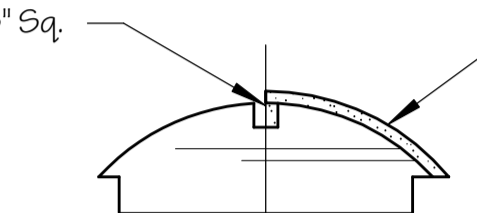
F7
3/32" sheet



F9
3/32" sheet



F10
3/32" sheet



Clear plastic (typ)

1/16" sheet

F6 F7

3/32" x 3/16" top longerons

1/8" Sq. uprights

1/8" Sq. bottom crossmembers

3/16" dowels

1/16" ply

F8

1/16" sheet - cross grain

1/16" sheet

TYPICAL WING CROSS SECTION

F5
1/8" LitePly - x2

U/C mount
3/32" ply

F8
1/8" LitePly

3/16" dowel - Lower wing hold downs
(front dowel not shown in this view)

top sheeting ends here

1/8" Sq. top stringer

1/8" Sq. bottom crossmembers

1/8" Sq. uprights

3/32" x 3/16" top longerons

3/32" sheet fuselage sides

Tailplane shown this side only

3/32" X 1/8" stiffener

Fin & Rudder
3/32" sheet

Tailplane & Elevators

Elevator control horn
not shown in this view

Rudder control horn
(opposite side)

Slot for Rudder Control Horn

1/8" stern post

Tail skid - dural

Section View at Elevator control horn

Tailskid - 0.025" Dural
Bend as shown in side view

Control horns
1/32" ply - x2 Required

Notch as required to provide
clearance for control horn

Rudder control horn

Slot for Elevator control horn

Elevator control horn (bottom)

