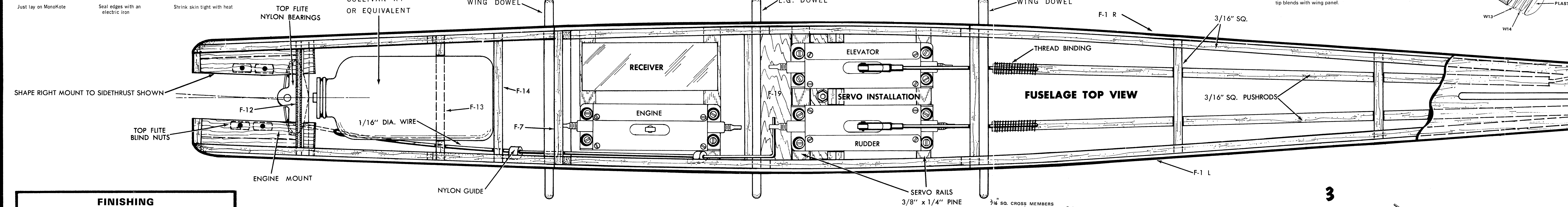


Use this covering layout pattern to cut Super-Monokote

38	7	7	9	9	9	9	9	9	9
FUSE SIDE	FIN	FIN	DN/W	DN/W	DN/W	DN/W	DN/W	DN/W	DN/W
7	7	7	9	9	9	9	9	9	9
FUSE SIDE	DN/W	DN/W	DN/W	DN/W	DN/W	DN/W	DN/W	DN/W	DN/W
6	6	6	6	6	6	6	6	6	6
FUSE TOP	DN/W	DN/W	DN/W	DN/W	DN/W	DN/W	DN/W	DN/W	DN/W
6	6	6	6	6	6	6	6	6	6
FUSE BOTTOM	DN/W	DN/W	DN/W	DN/W	DN/W	DN/W	DN/W	DN/W	DN/W

**PROCEDURE FOR COVERING WITH SUPER-MONOKOTE**

Just lay on Monokote Seal edges with an electric iron Shrink sun tight with heat



**FINISHING**

If you want a beautiful high gloss finish in the least amount of time, use Top Flite's Super-Monokote. Begin by sanding all surfaces extra fine. Do not use dope. Follow Super-Monokote instructions.

If however you wish to finish the model by the regular method, proceed as follows:

Sand the entire plane with 2/0 garnet or fine sandpaper on a block, and then with 4/0 garnet paper. Finish sand with 400 wet dry sandpaper. Apply one coat of clear dope, and cover with alkalin, shrinking it tight with water. Apply 5 or 6 coats of clear dope to the wing, sanding carefully with 400 wet garnet paper after each coat. Watch for warps while doping. Glue the fuselage and tail surfaces two more coats of clear dope and two coats of Bals filler, sanding after each coat with 400 wet dry garnet paper. Finish off the engine compartment by coating with fuelproof glue. Then give the model 3 or 4 coats of colored dope.

FOR BEST PERFORMANCE USE TOP FLITE AND POWER PROPS

ENG. DISPL.	PROP.
.09	8 X 4
.15	8 X 6
.19	9 X 4

**RECOMMENDED ENGINES**

Throttle-control engines from .09 cu. in. up to .35 cu. in.

Engines above .19 cu. in. recommended only for experienced flyers.

**FINAL ASSEMBLY**

Stabilizer is glued permanently to fuselage. This may be done prior to finishing or after finishing as you prefer.

Attach nylon horns to rudder and elevator after finishing. These surfaces are best hinged to fuselage with Super-Monokote hinges. (See sketch.)

But main landing gear to fuselage using clip supplied. Assemble nosewheel unit. Mount tank and engine. Make pushrod and install your radio gear using battery and/or receiver position to arrive at correct balance-point. Follow manufacturer's directions for RC gear installation and check thoroughly WITH and WITHOUT engine running before flying.

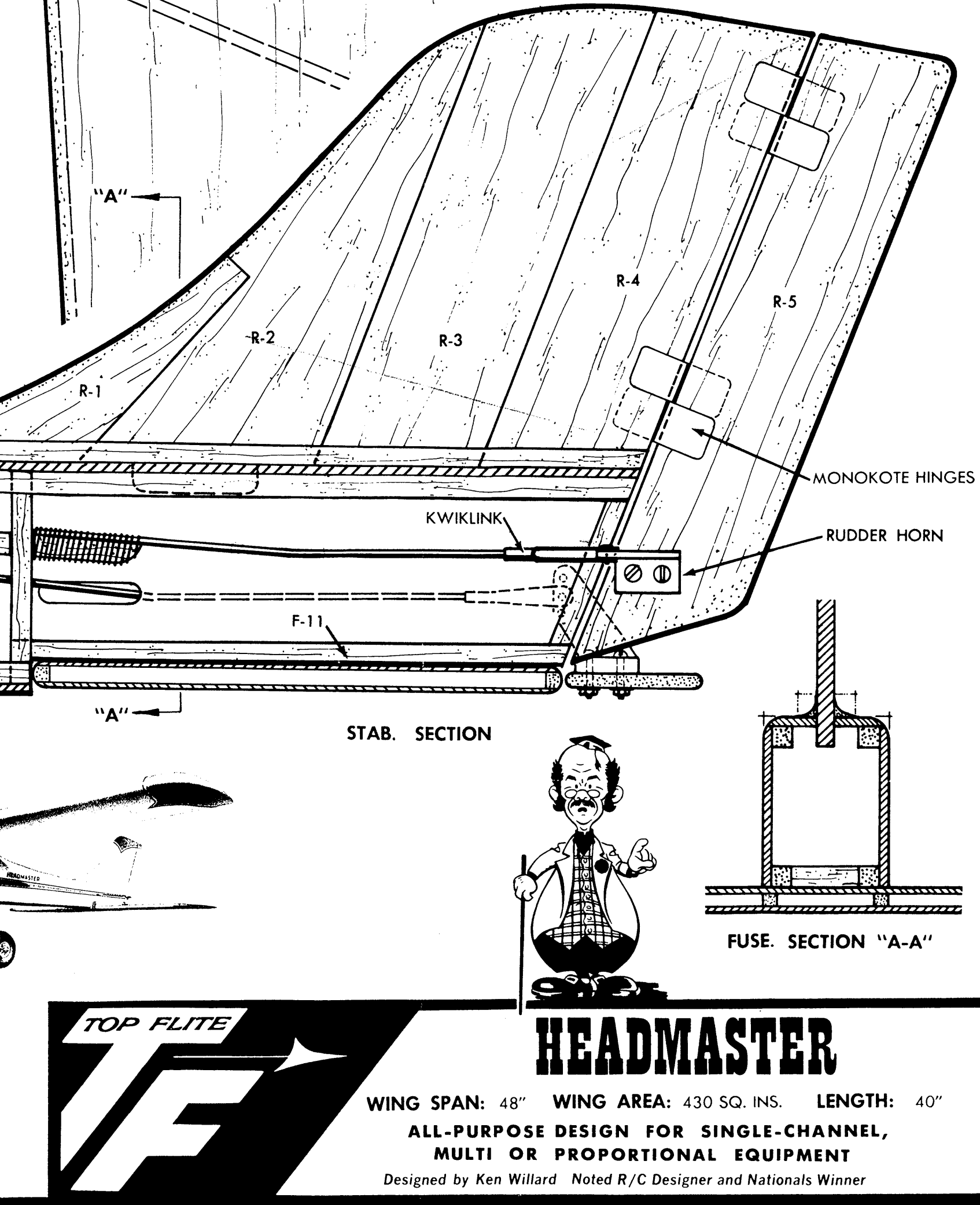
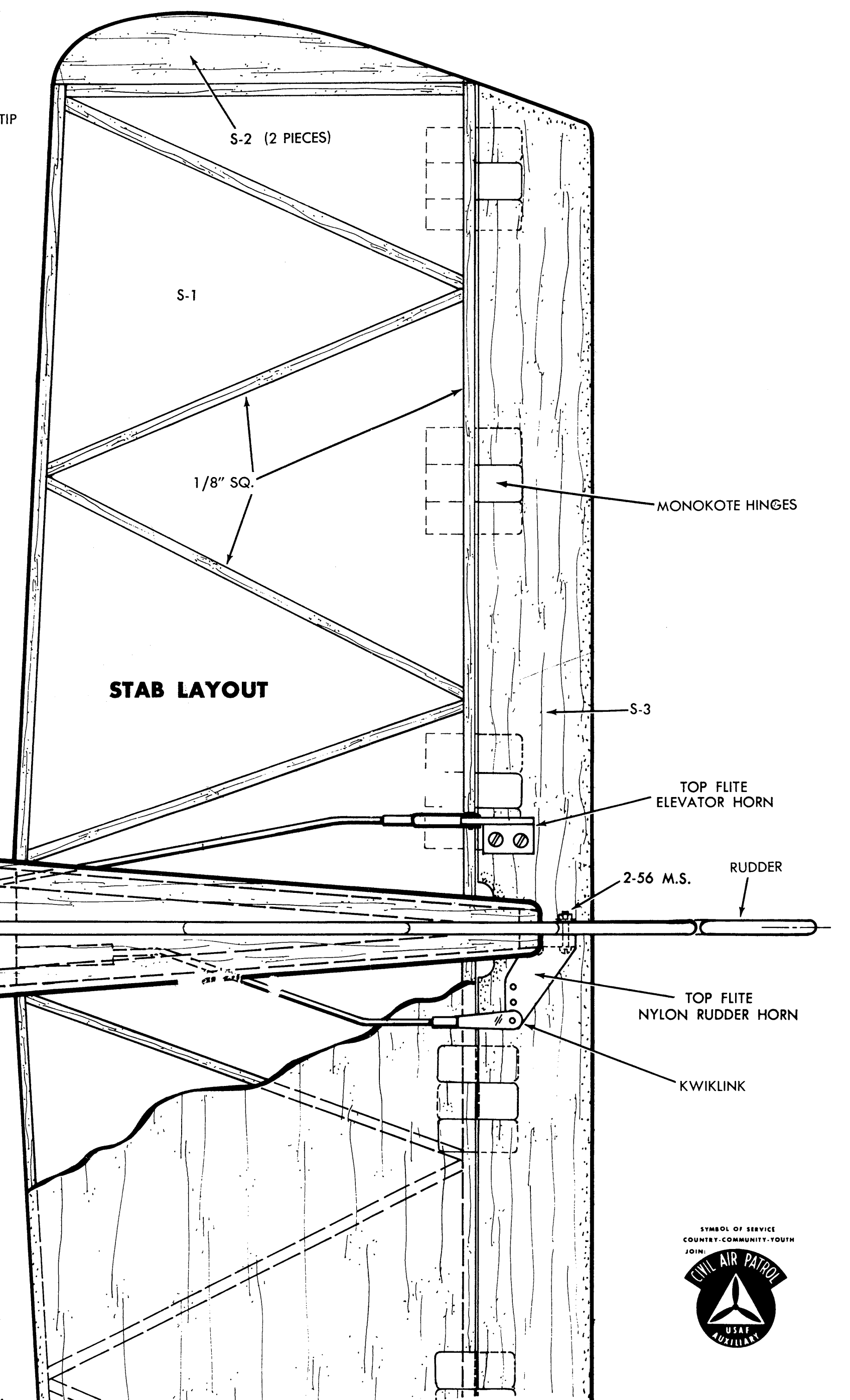
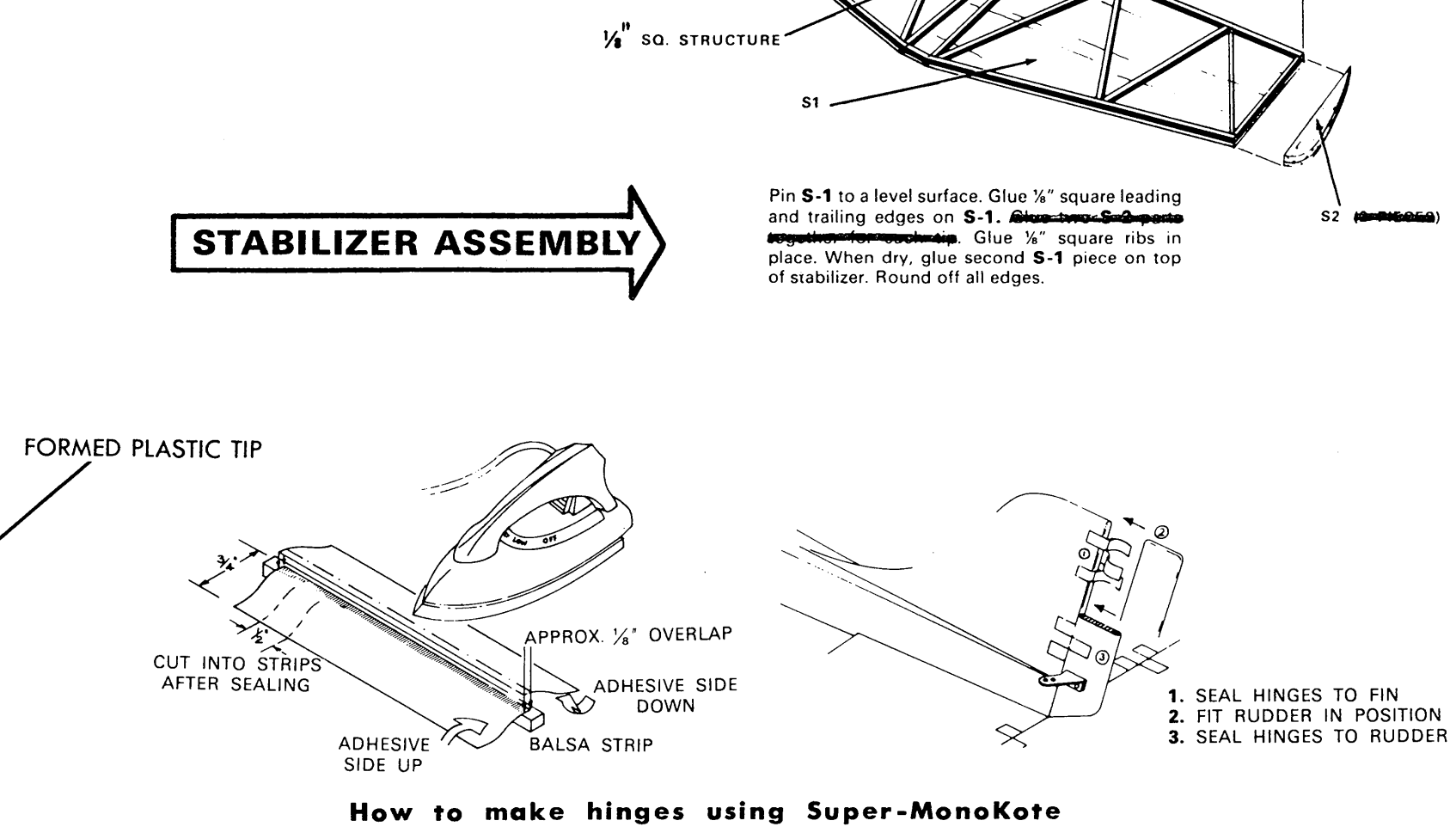
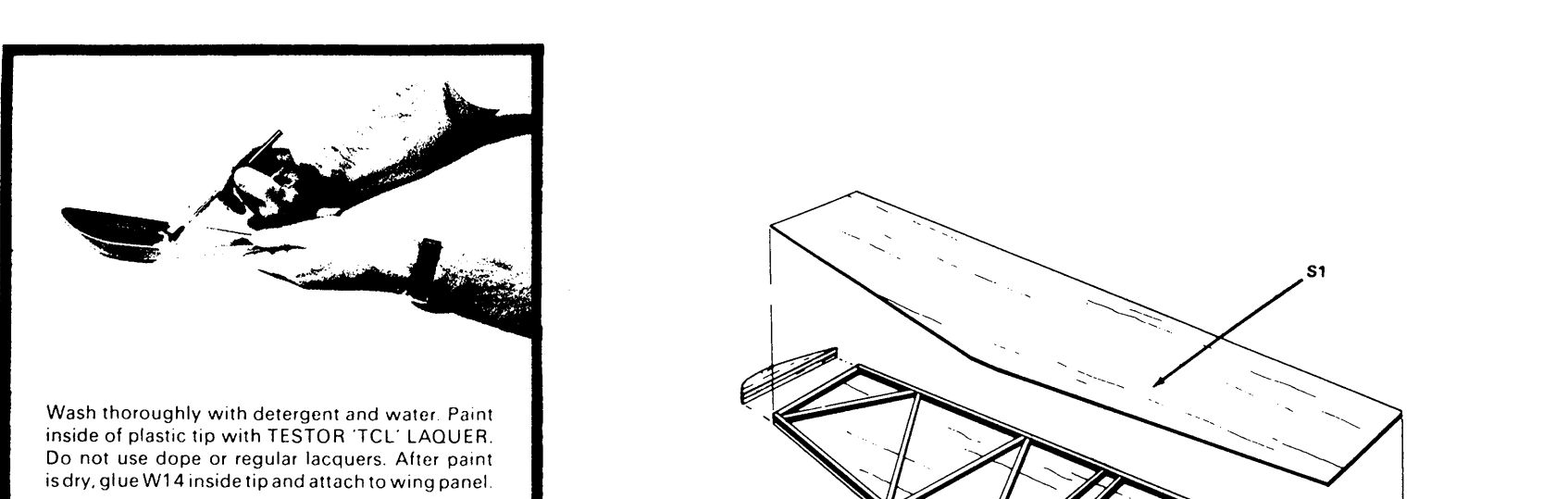
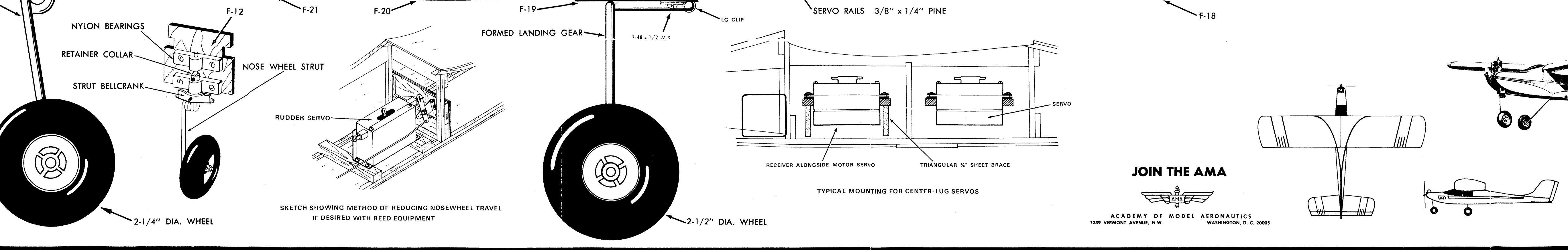
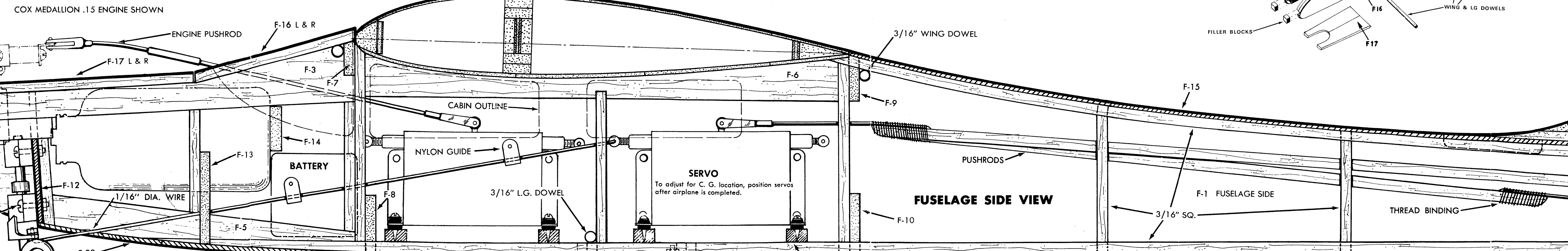
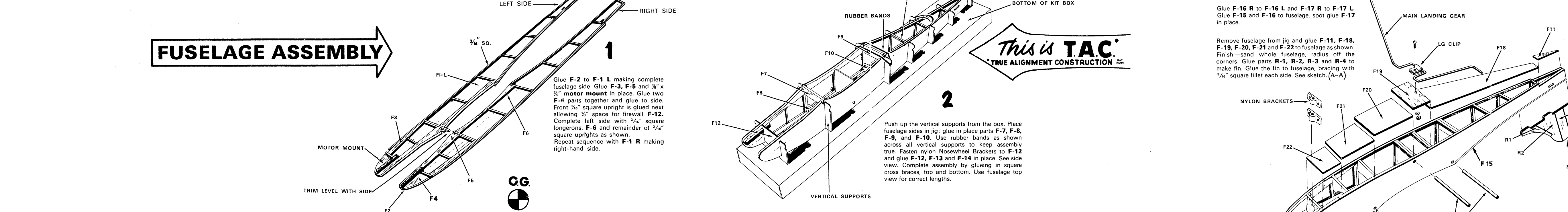
Read carefully the enclosed Top Flite book of RC flying tips and hints!

**RECOMMENDED RADIO CONTROL UNITS**

Single-channel Galloping Ghost, 6-channel read multi or 3-channel digital proportional

2-1/4" DIA. WHEEL

2-1/2" DIA. WHEEL



JOIN THE AMA

ACADEMY OF MODEL AERONAUTICS

123 VIMONT AVENUE, N.W. WASHINGTON, D.C. 20005

**TOP FLITE**

**HEADMASTER**

WING SPAN: 48" WING AREA: 430 SQ. IN. LENGTH: 40"

ALL-PURPOSE DESIGN FOR SINGLE-CHANNEL, MULTI OR PROPORTIONAL EQUIPMENT

Designed by Ken Willard. Noted R/C Designer and Nationals Winner.