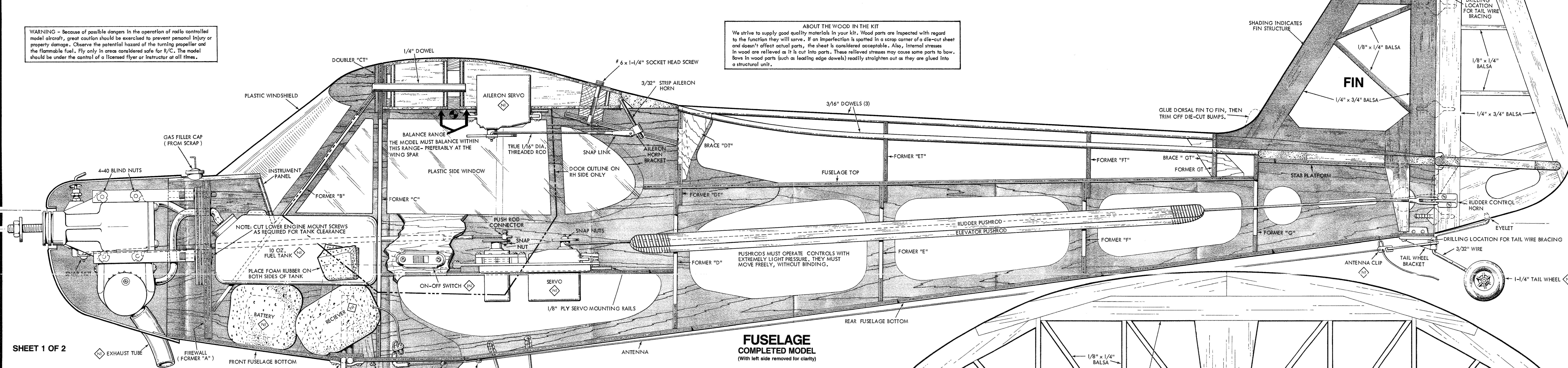


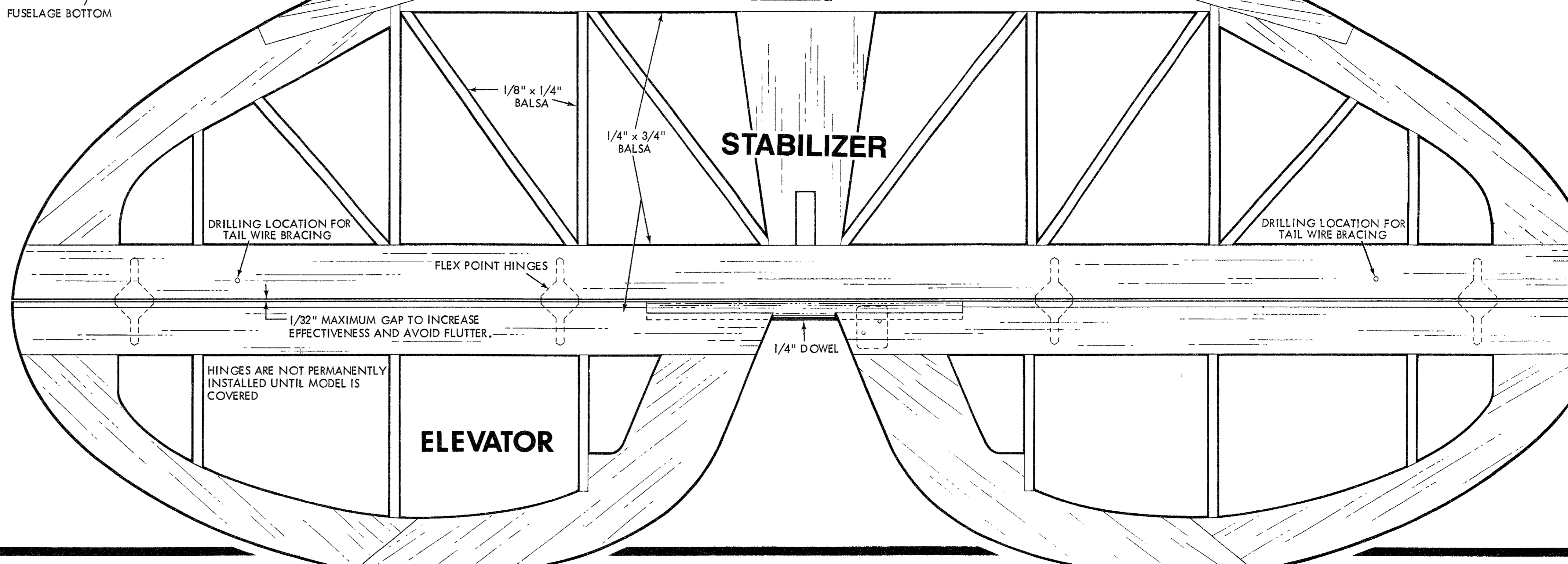
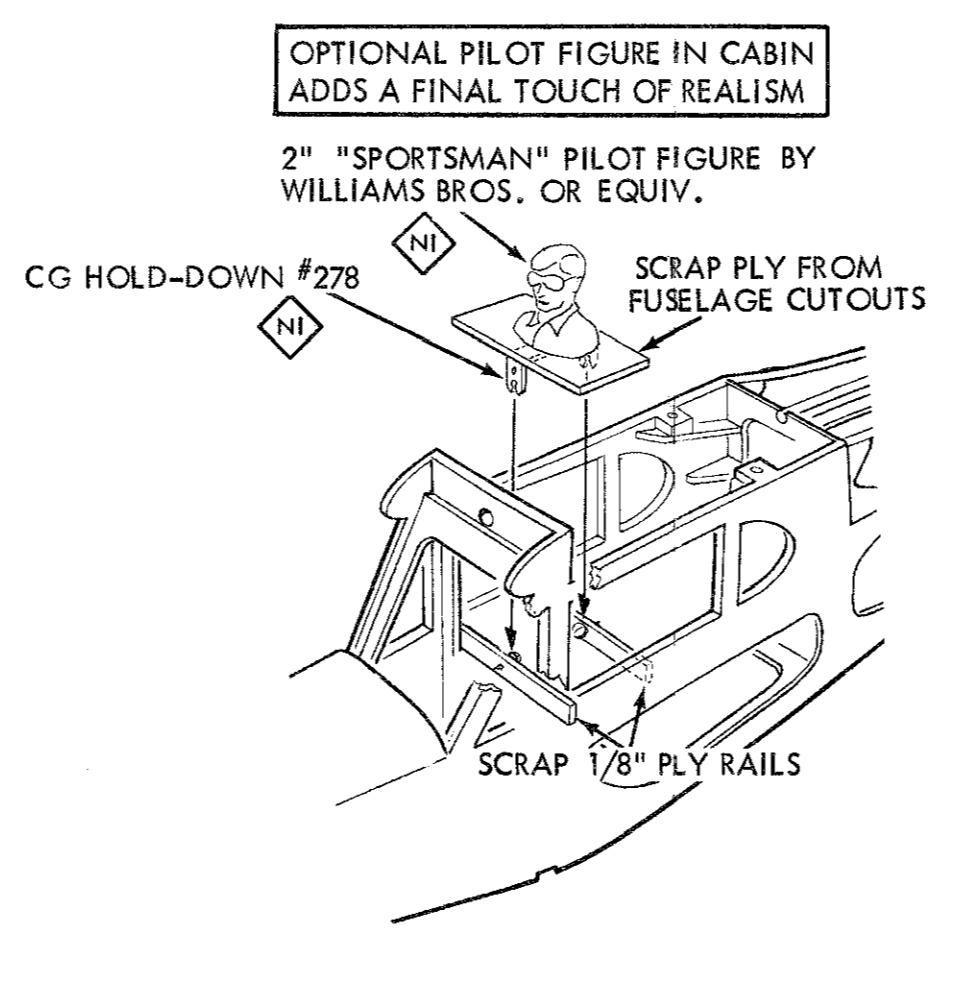
WARNING - Because of possible dangers in the operation of radio controlled model aircraft, great caution should be exercised to prevent personal injury or property damage. Observe the potential hazard of the turning propeller and the flammable fuel. Fly only in areas considered safe for R/C. The model should be under the control of a licensed flyer or instructor at all times.

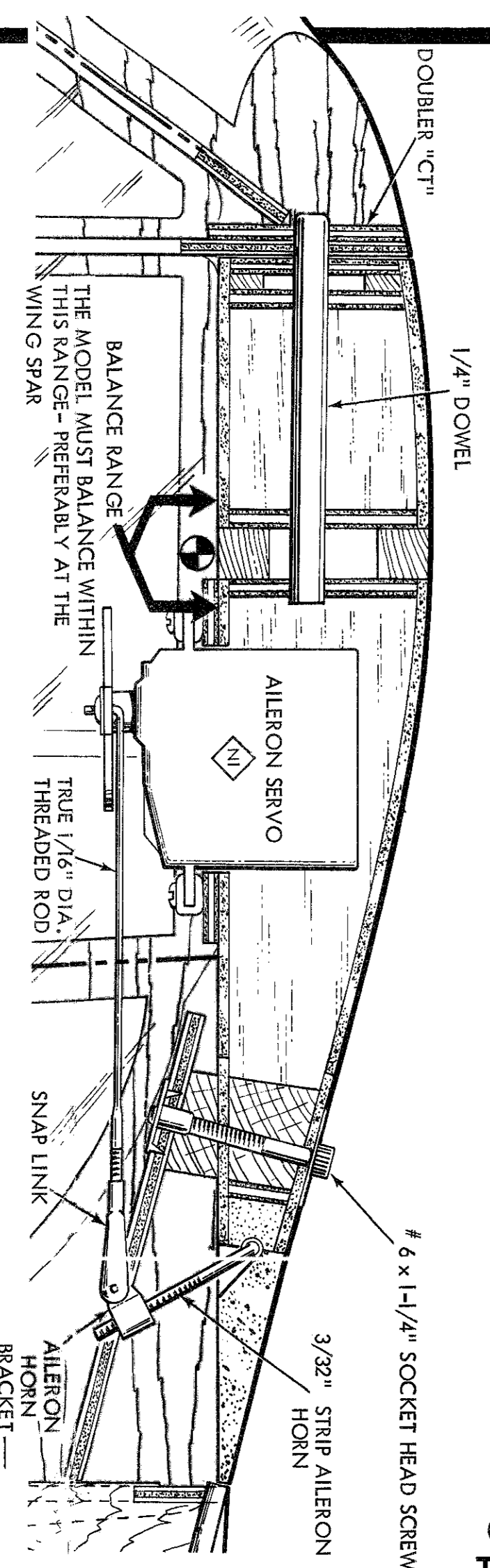
ABOUT THE WOOD IN THE KIT
We strive to supply good quality materials in your kit. Wood parts are inspected with regard to the function they will serve. If an imperfection is spotted in a scrap corner of a die-cut sheet and doesn't affect actual parts, the sheet is considered acceptable. Also, internal stresses in wood are relieved as it is cut into parts. These relieved stresses may cause some parts to bow. Bows in wood parts (such as leading edge dowels) readily straighten out as they are glued into a structural unit.



CUB
R/C SPORT SCALE, KIT No. 63
FOR 4-CHANNEL RADIO and .40 to .61 2-CYCLE or .40 to .90 4-CYCLE ENGINES
SPAN 76 1/2" (Clipped Wing 67 1/2") LENGTH 48"
WING AREA 744 sq. in. (648 sq. in.) FLYING WEIGHT 7 to 7 1/2 lbs.
DESIGNED BY WARREN KRONBERGER
TECHNICAL ASSISTANCE, BUILDING & FLYING BY:
JIM PETRZELKA, DAVE PATRICK, RALPH VAN DORP,
MICKEY LASARDO, AND RALPH CATLIN
DRAWN BY WARREN KRONBERGER, MAC MCVICKAR, AND
JIM NEWMAN
CONSTRUCTION PHOTOGRAPHS BY ROGER CHRISTY
ITEMS MARKED ARE "NOT INCLUDED IN THE KIT"
see Booklet for ADDITIONAL ITEMS list.

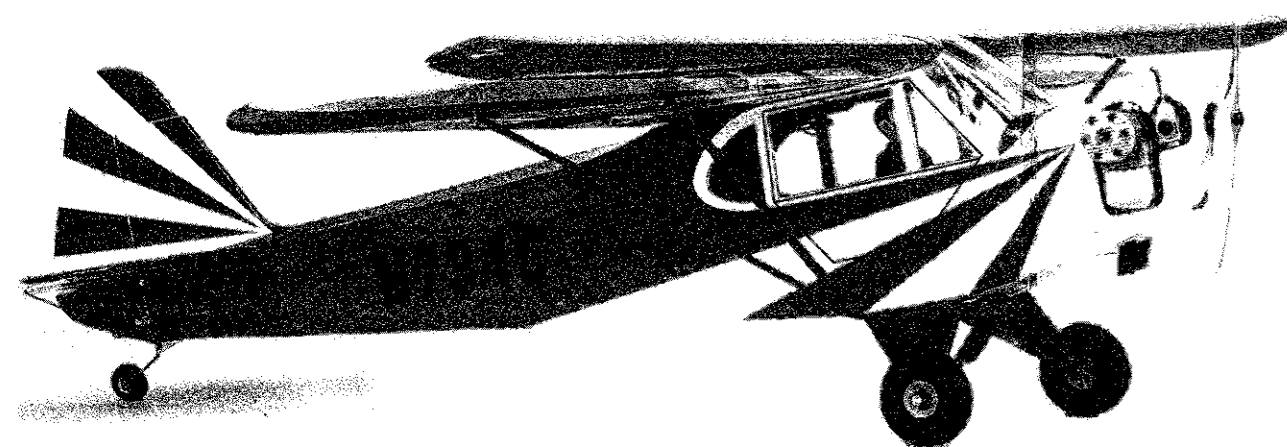
FUSELAGE COMPLETED MODEL
(With left side removed for clarity)





HOW CAREFUL MUST I BE WHEN BUILDING PARTS OVER THE PLAN?
The paper the plan is printed on can expand or contract slightly with changes of temperature and humidity. Because of this, a pre-formed part such as the notched wing trailing edge may not match exactly with the plan. This is not cause for concern. Small deviations in the outline or size will not noticeably affect the flight performance of the model.

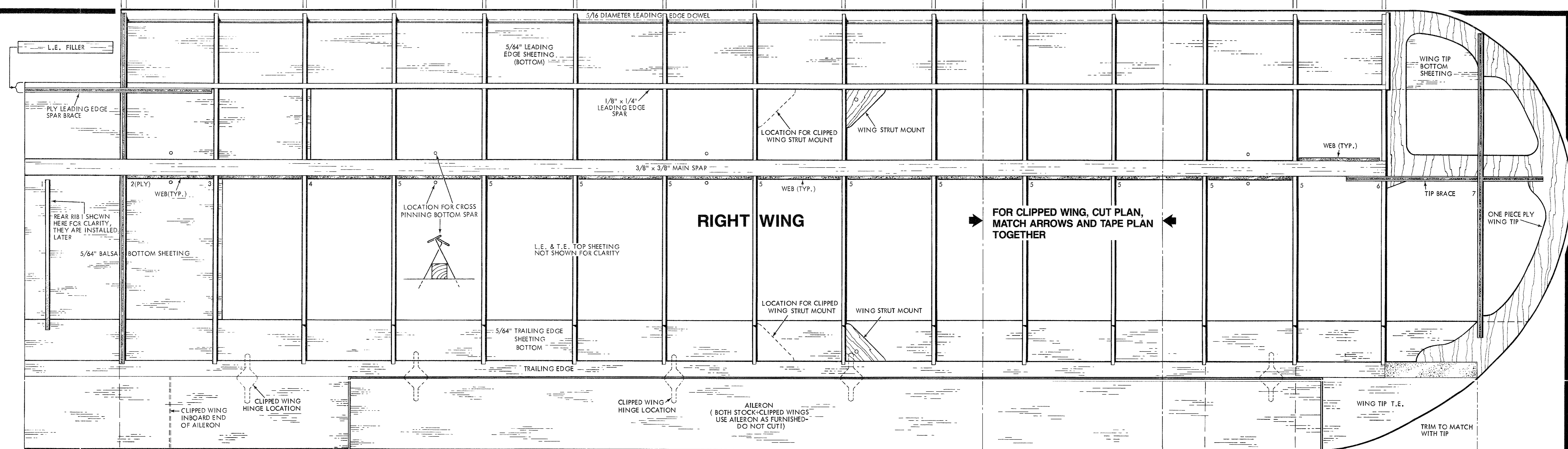
There are two things you should be especially careful about. Each panel of the wing should lie perfectly true when laid on a flat surface. Try to make sure the stabilizer and fin are mounted on the fuselage so they are square and true to the fuselage. This is thoroughly described later on in the instruction booklet.



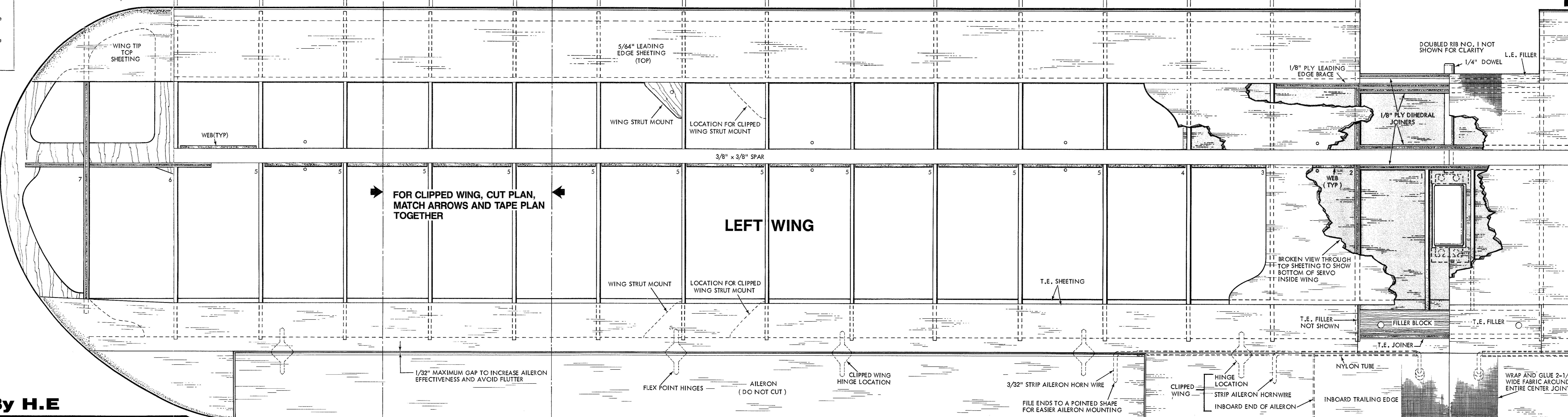
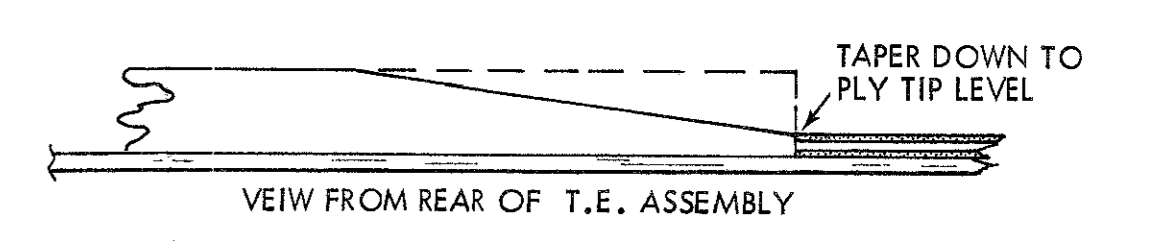
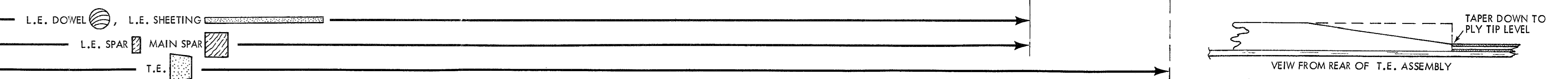
CUB

R/C SPORT SCALE, KIT No. 63

SHEET 2 OF 2
WING ASSEMBLY



CUTTING TEMPLATE FOR CLIPPED WING



FOR CLIPPED WING, CUT PLAN, MATCH ARROWS AND TAPE PLAN TOGETHER

LEFT WING