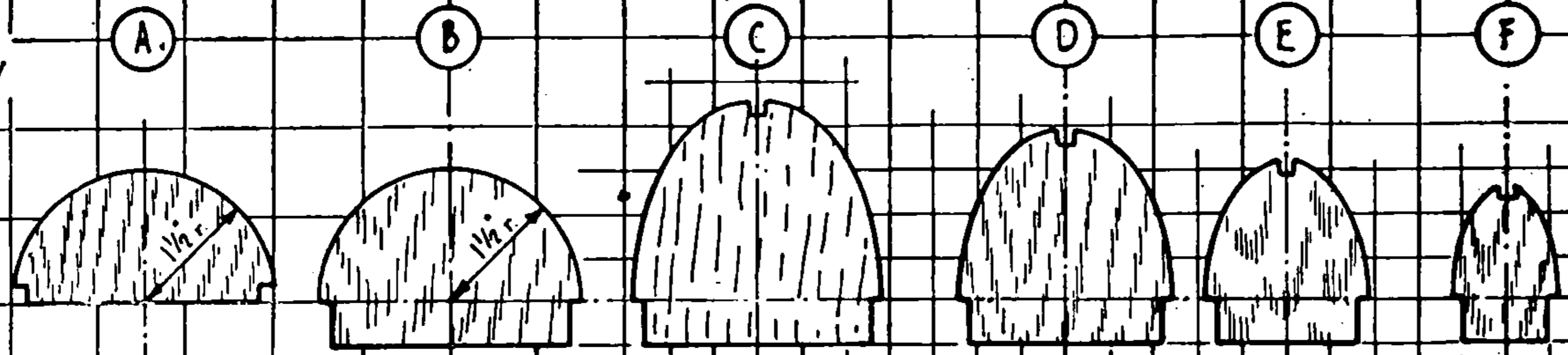
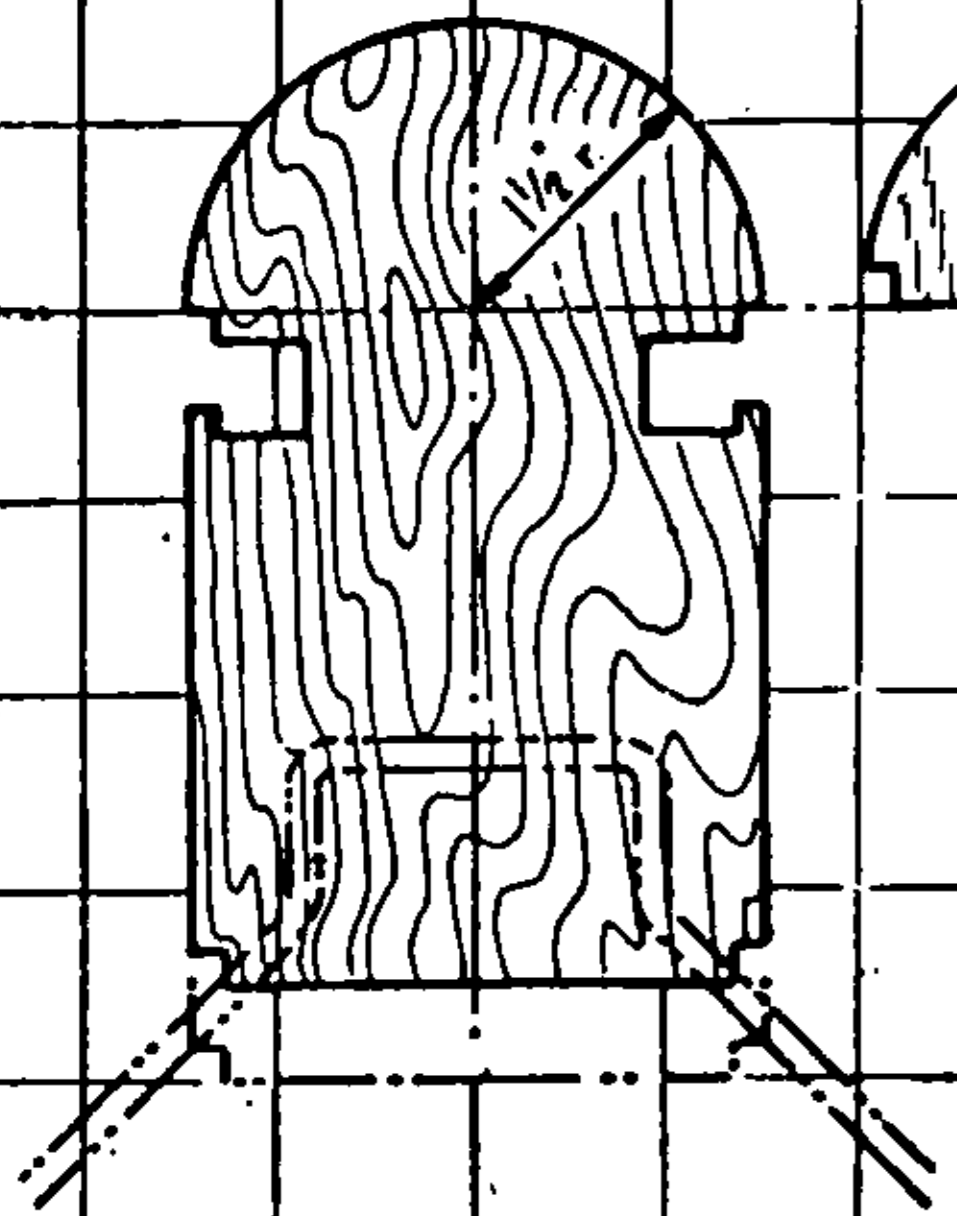
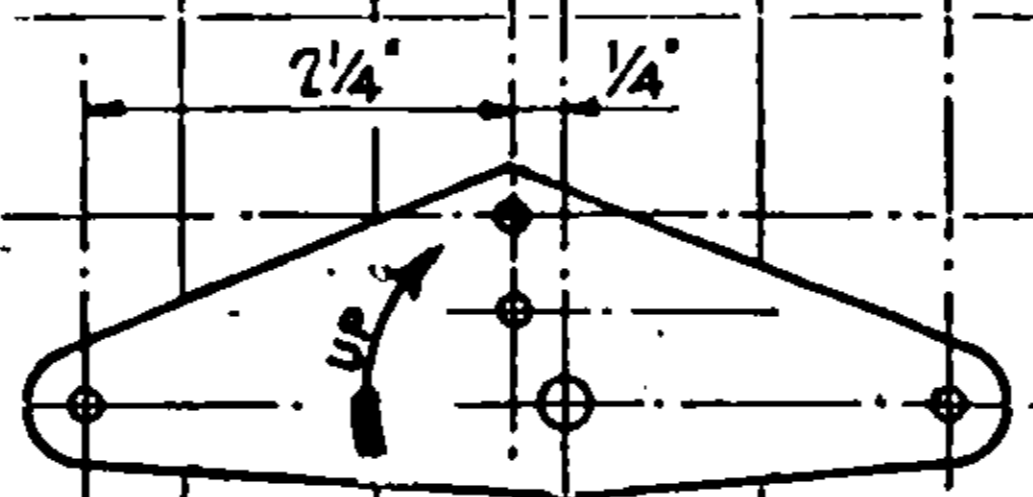


FIREWALL ~ 1/4" 3-PLY



FORMERS: CUT FROM 3/32" AED. SHEET. CROSS-CHECK SIZE WITH ASSEMBLED CRUTCH. FINAL TRIMMING IS TO BE DONE AFTER CEMENTING TO CRUTCH TO ASSURE ALIGNMENT.



FURY VIII CONTROL PLATE



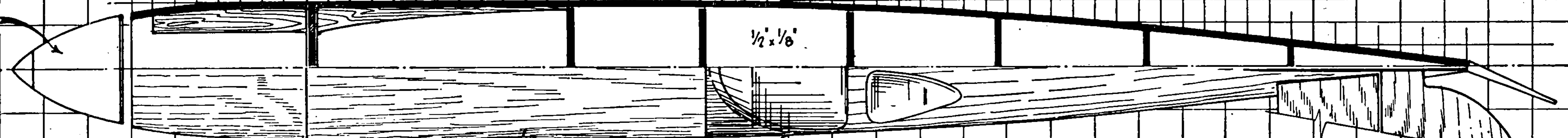
SUGGESTED PROP - See Text.



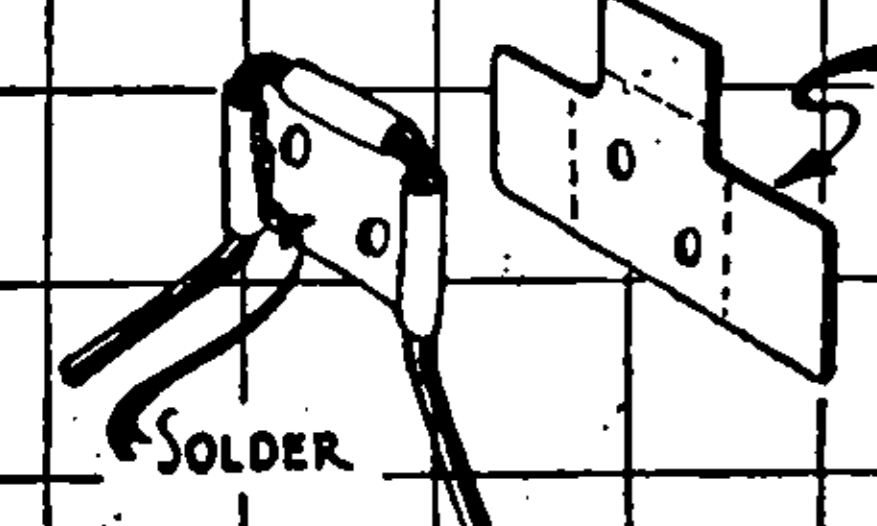
INSIGNIA ~ 2 REQ'D.

CRUTCH: 1/8" x 1/2" HARD BALSA

2 1/2" SPINNER



ENTIRE FUSELAGE COVERED WITH 3/32" SOFT SHEET, SANDED DOWN TO ABOUT 1/16" AFTER ASSEMBLY.



LANDING GEAR ATTACHMENT

SHIM BRASS



HARDWOOD MOTOR SKID

MOTOR SKID LOCATION AND SIZE IS SHOWN FOR THE ATWOOD 'CHAMPION' MOTOR. MODIFY FOR DIFFERENT POWER PLANTS, WHERE NECESSARY, TO GIVE SPECIFIED THRUST LINE POSITION.

REMOVABLE HATCH

FIN & RUDDER ~ 3/16" HARD SHEET

Thrust Line 0°

Incidence 0°

WING LOCATION FOR BOTH FURY VII & VIII

1/4" x 1/8" HARD UPRIGHTS ~ CUT SLIGHTLY OVERSIZE AND CEMENTED TO CRUTCH. TRIMMING IS TO BE DONE AS 3/16" SQ. LONGERONS ARE ATTACHED. LONGERONS ARE TO ASSUME A SWEEPING CURVE.

OPTIONAL TAIL WHEEL

2 1/2" OR 3" DIA. AIRWHEELS

AIR AGE INC., 551 FIFTH AVE., NEW YORK, 17, N.Y.

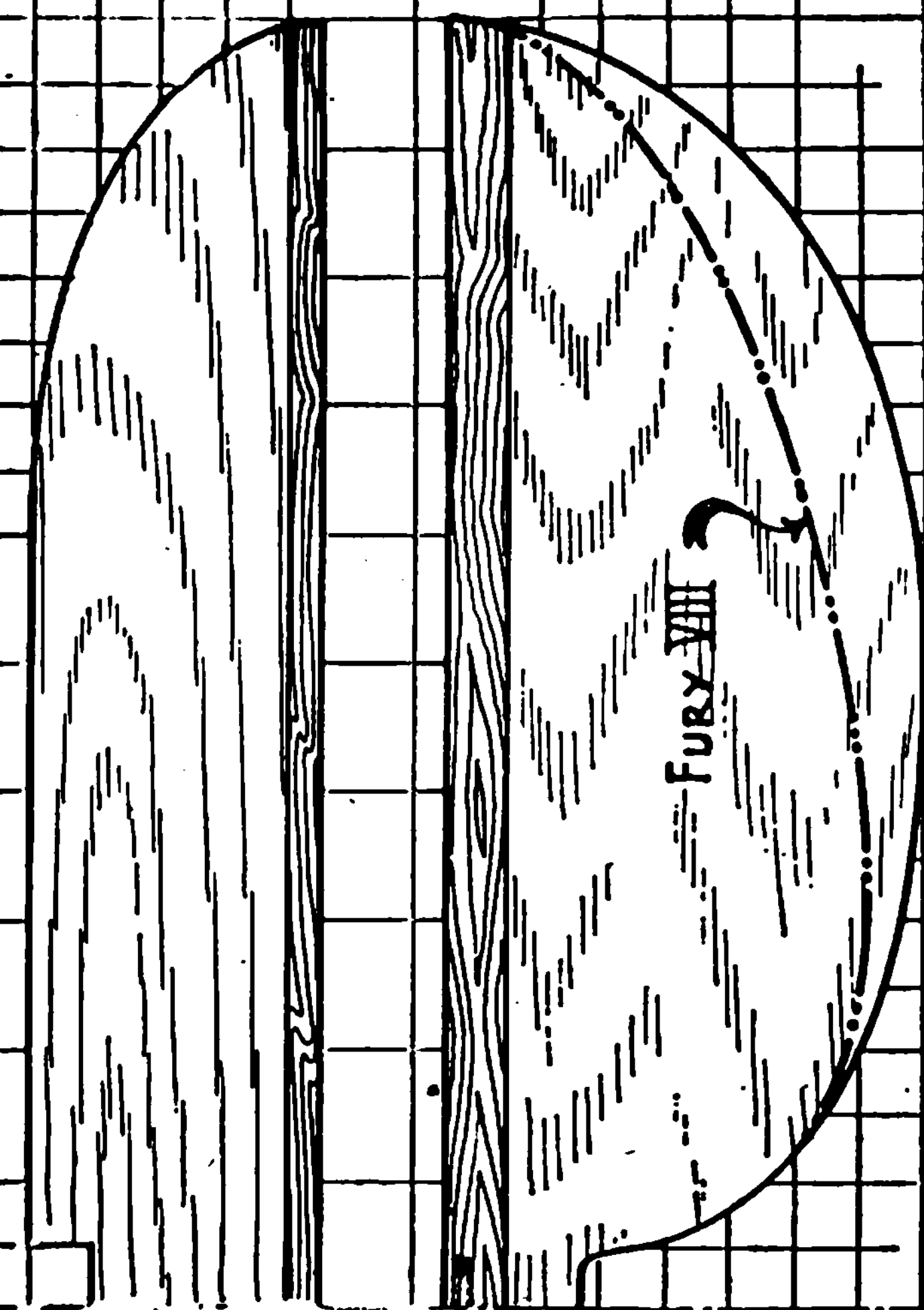
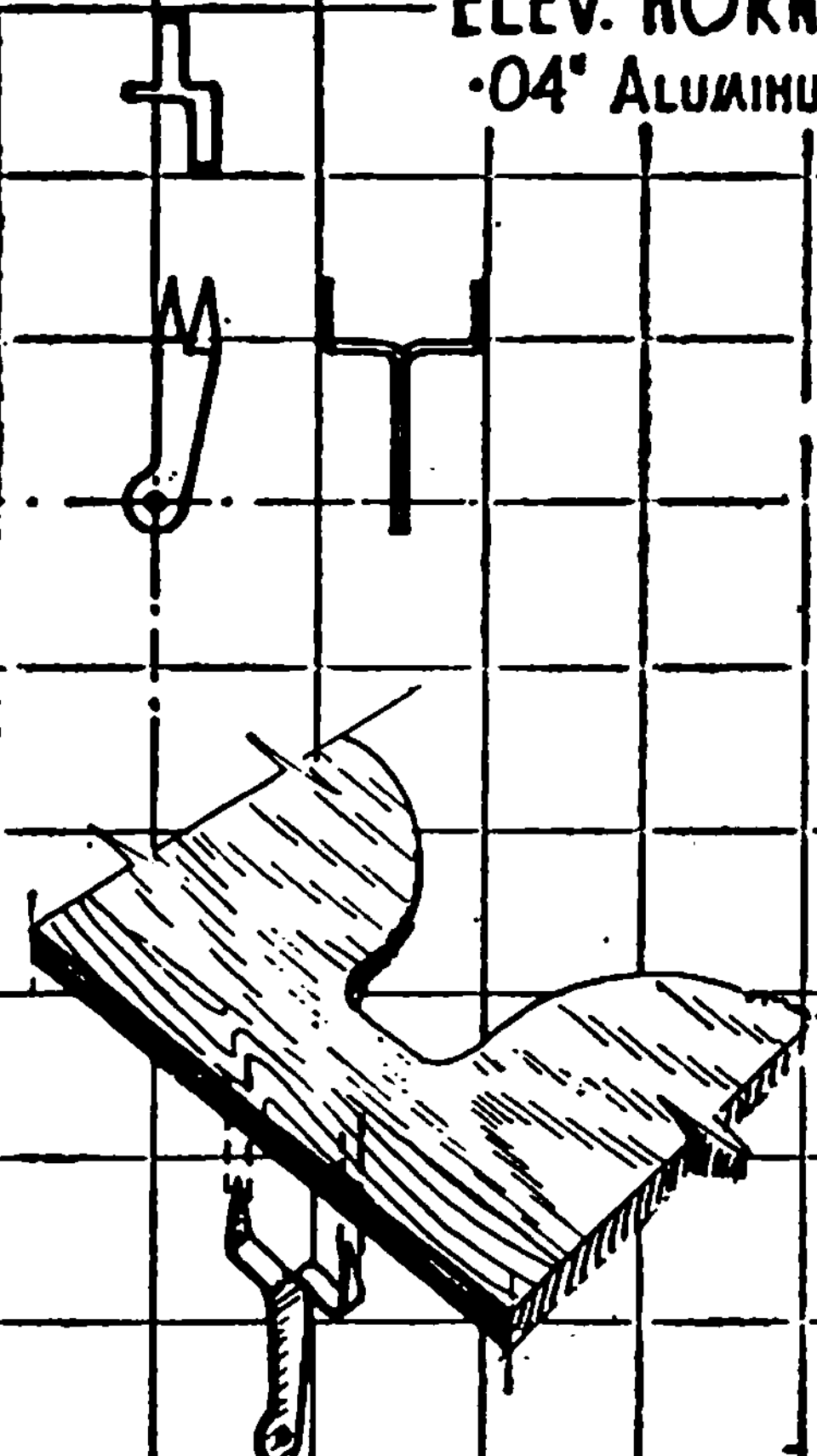
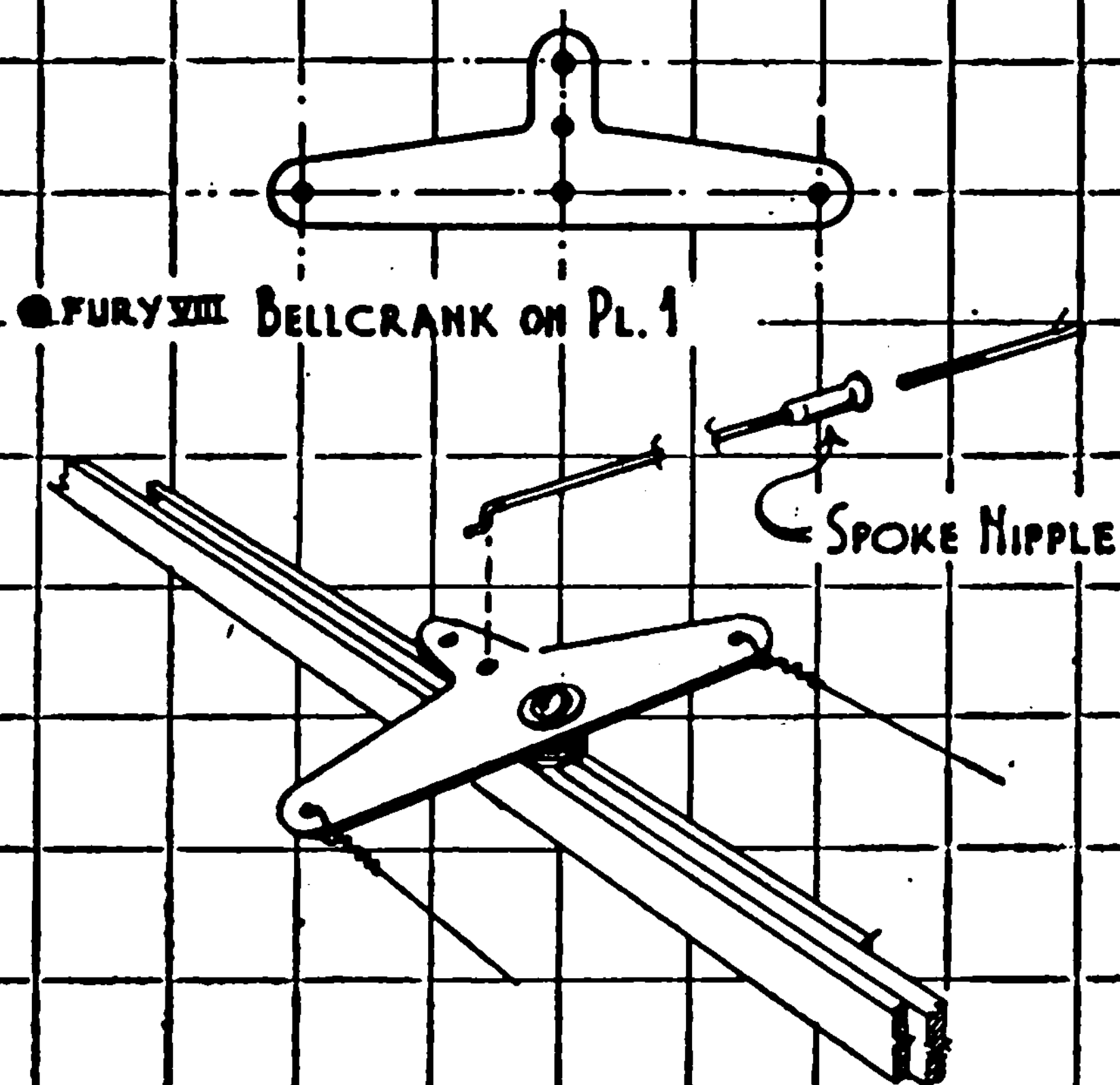
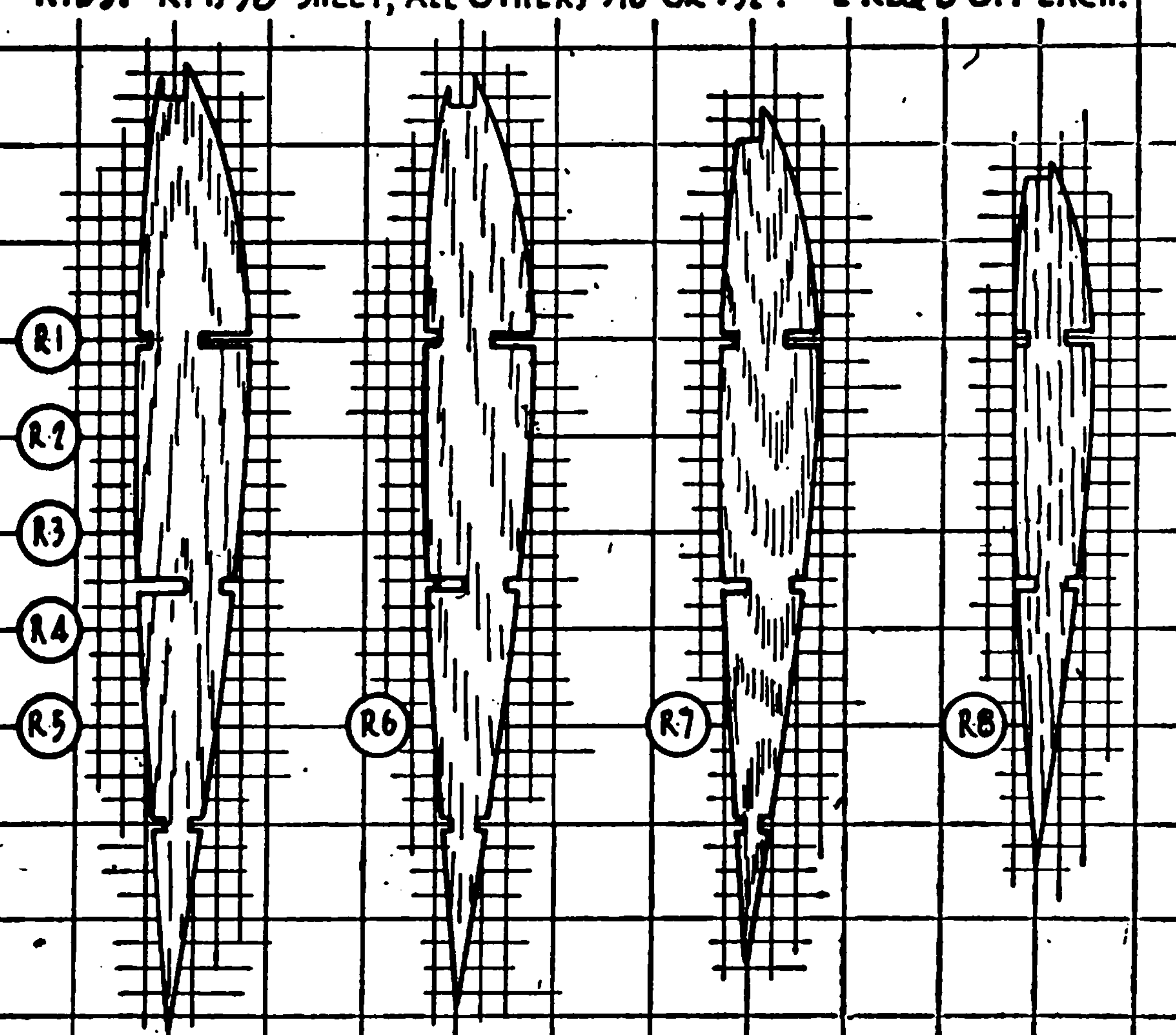
DATE:
SCALE: 1/4" = 1"
DRAWN: J.S.L. ACID

Plate 1
FURY SCREWBALL
Class 'D' - Stunt

RIBS: R1 IS 1/8" SHEET, ALL OTHERS 1/16" OR 3/32". 2 REQ'D OFF EACH.

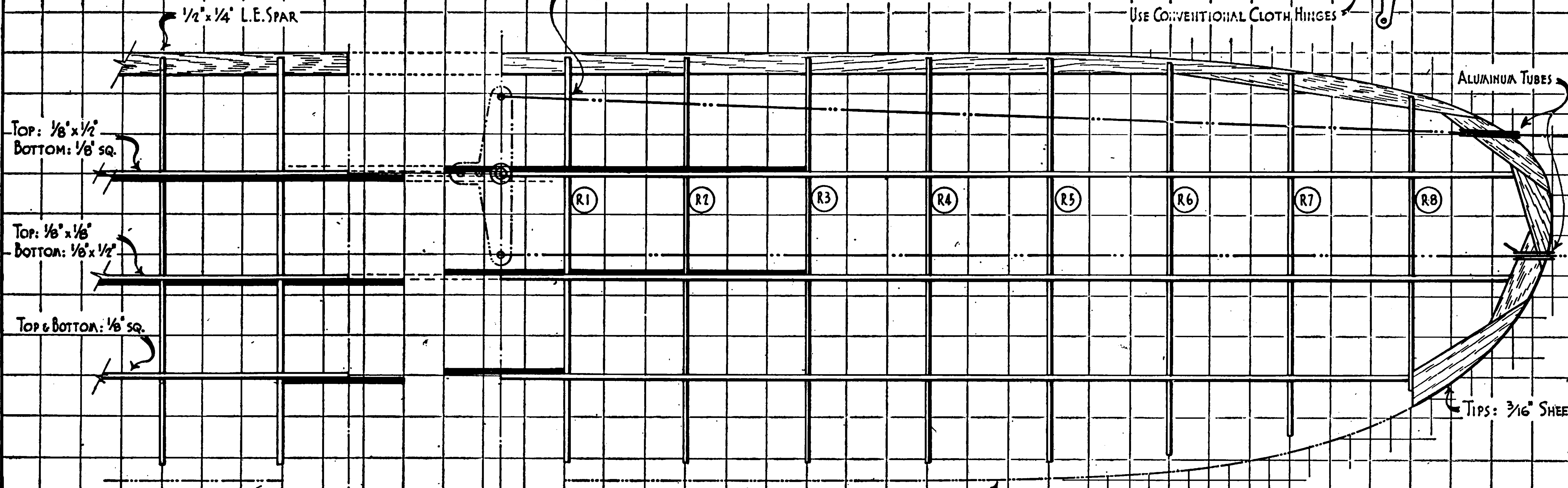
FURY VII CONTROL-PLATE: .06" ALUMINUM

ELEV. HORN
.04" ALUMINUM



HOLES IN RIBS FOR CONTROL-LEADERS ARE MADE AFTER LOWER SURFACE HAS BEEN SHEETED
CONTROL LEADERS ARE THREADED IN PLACE BEFORE SHEETING UPPER SURFACE

USE CONVENTIONAL CLOTH HINGES



● ALL GUSSETS ARE LENGTHS OF 1/8" x 1/2" PINE. RIBS ARE NOTCHED FOR GUSSETS (Note Stagger) AFTER SHEETING LOWER SURFACE.

OUTLINE OF 3/32" SOFT BALSA SKIN

- WING IS COVERED WITH 3/32" SOFT SHEET TOP AND BOTTOM. GUSSETS CEMENTED IN PLACE BEFORE TOP SHEETING IS APPLIED.
- AFTER ASSEMBLY, SKIN IS SANDED DOWN SMOOTHLY TO APPROX. 1/16" IN THICKNESS.

AIR AGE INC., 551 FIFTH AVE., NEW YORK 17, N.Y.

DATE:

SCALE: 1/4" = 1"

DRAWN:

J.S.L.

Plate 2

FURY SCREWBALL
Class D • Stunt