

# ETHEREAL LADY



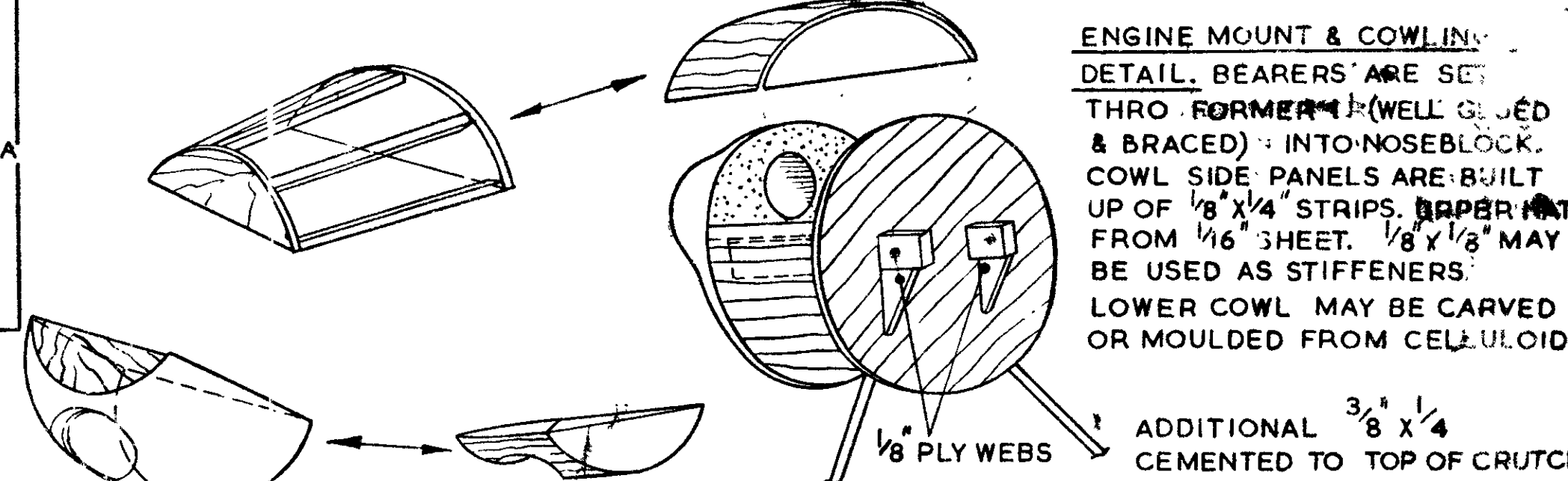
DESIGNED BY  
**V. E. SMEED.**

COPYRIGHT OF

THE AEROMODELLER PLANS SERVICE.  
38, CLARENDON ROAD, WATFORD, HERTS.

CUT FINGER HOLE ON ST<sup>3</sup> SIDE FOR CHOKING  
INDUCTION PIPE SHOULD PROTRUDE THRO' FORMER 1.

STRIP:		MISCELLANEOUS	
4	STRIPS OF 1/16" x 1/8" x 36" Balsa	2	STRIPS OF 3/8" x 5/8" x 4" SPRUCE
2	1/8" x 1/8" x 36" HARD Balsa	2	1/16" x 1/8" x 18" BAMBOO
2	1/8" x 1/4" x 36"	1	PIECE OF PLY 1/8" x 3 1/2" x 4 1/2"
2	1/4" x 1/4" x 36"	2	BLOCKS OF 1/2" x 1" x 6 1/4" MED Balsa
3	1/4" x 3/8" x 36"	1	1" x 1 1/2" x 6"
1	1/4" x 1/2" x 36"	2 1/2	OF 12 SWG. PIANO WIRE.
1	SHEET 1/16" x 3" x 36" Balsa	6"	20"
1	1/8" x 3" x 36" HARD Balsa	1	SHEET CELLULOID
3	1/8" x 3" x 36" MED		RAG TISSUE ETC.



ALL WOODS UNLESS OTHERWISE  
STATED ARE Balsa.

METAL MOTOR MOUNTS  
MAY BE USED

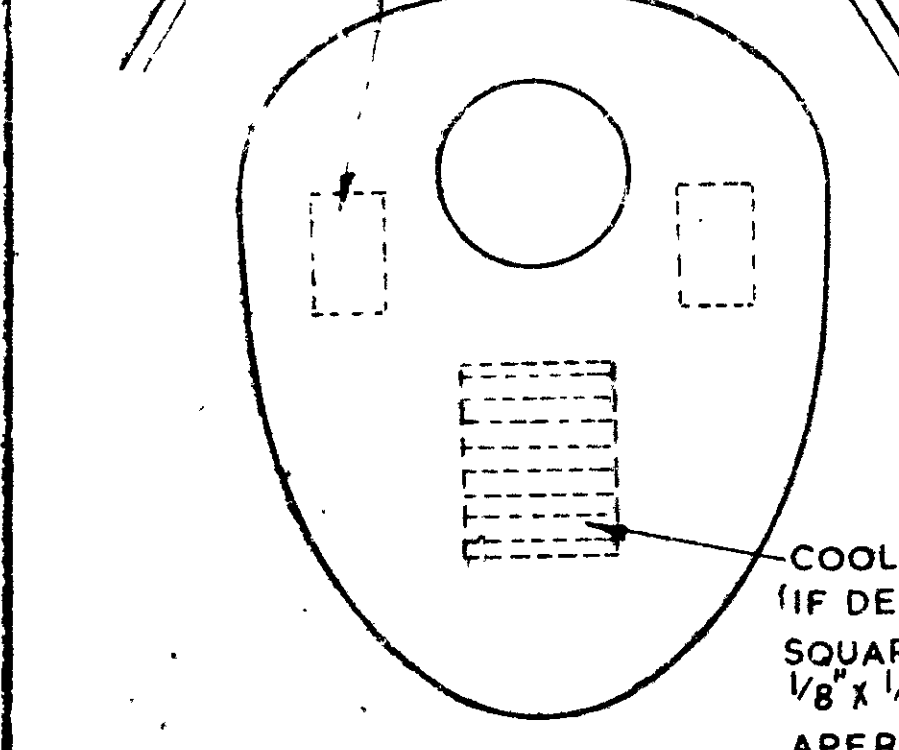
THIS LINE MAY BE LOWERED TO THIS  
TO THIS POINT FOR UPRIGHT INSTALLATIONS  
N.B. USE 1" DOWNTHRUST.

TO REMOVE MOTOR IF BUILT TO PLAN

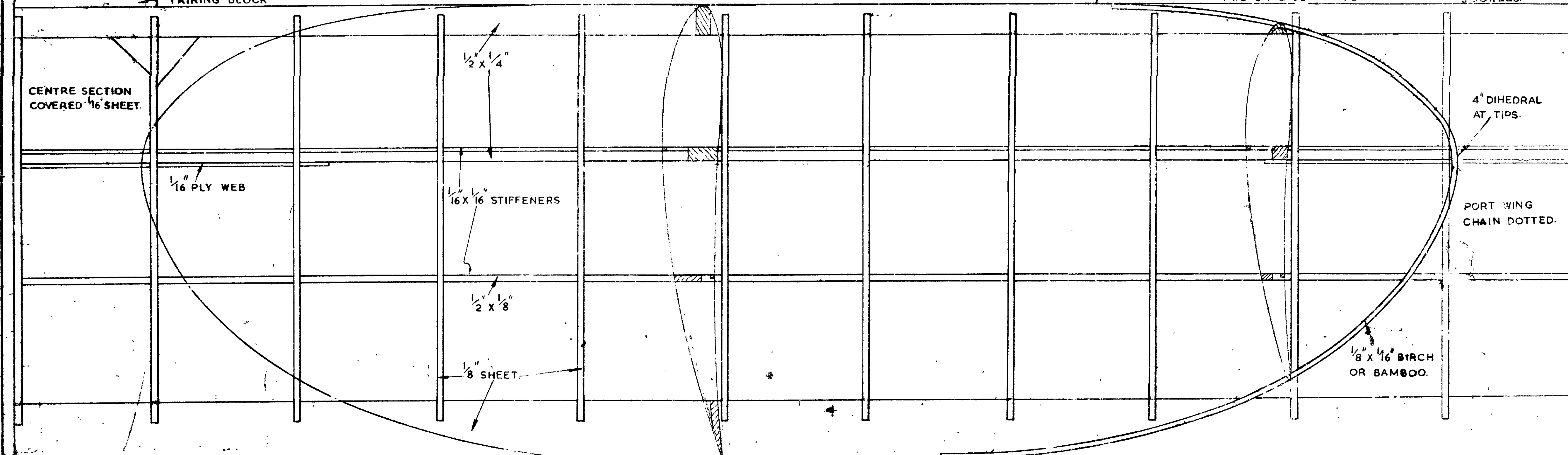
1. REMOVE AIRSCREW
2. UNBOLT MOTOR
3. SLIDE FORWARD TO CLEAR INDUCTION TUBE.
4. LIFT OUT MOTOR BY RAISING BACK FIRST SHAFT APERTURE IN NOSE BLOCK MUST BE LARGE ENOUGH TO PERMIT THIS

SINCE INDIVIDUAL MODELLERS  
PREFER DIFFERENT COWLINGS  
THE ONE SHOWN, WHILE  
COMPLETELY SATISFACTORY ON  
THE ORIGINAL MODEL, NEED NOT  
NECESSARILY BE EMPLOYED

**UNDERCARRIAGE**  
12 SWG PIANO WIRE  
BOUND TO FORMER 1.  
IF WOOD MOTOR MOUNTS  
ARE DESIRED USE 3/8 x 3/8  
SPRUCE CUT OUT SLOTS  
IN NOSE BLOCK & F1 TO  
SUIT ENGINE USED.



FAIRING BLOCK



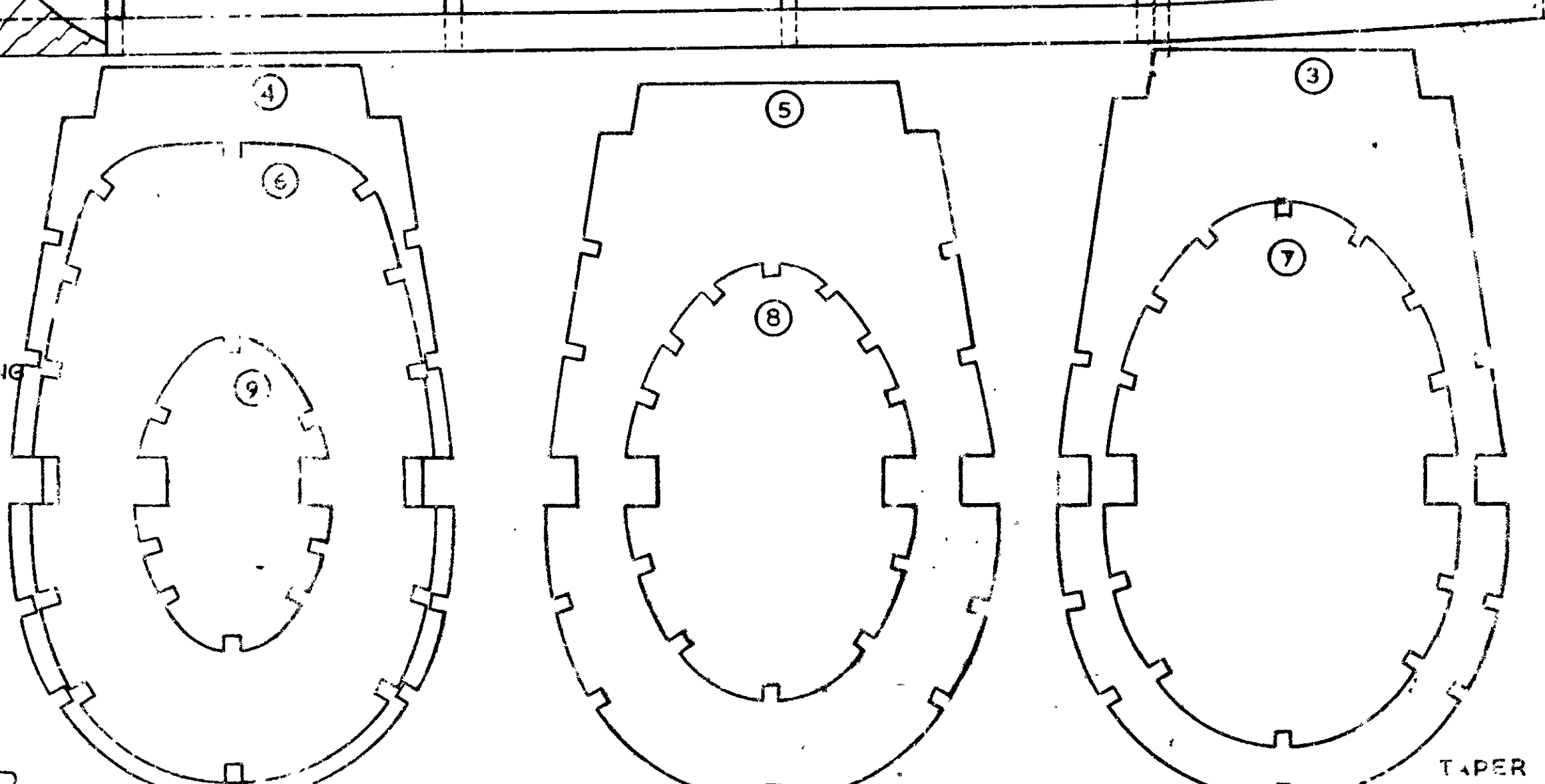
SIDE PANELS HARD  
1/8 x 1/4 STRIPS.

COIL & CONDENSER 1/16 SHEET MAY BE LET  
POSITION IF REQUIRED IN UP TO FORMER 4  
FAIRINGS SHAPED FROM 1" x 1/2" BLOCK  
ATTACHED TO LEGS WITH 4 LAYERS OF  
RAG PULP DIFFERENTIALLY CEMENTED.

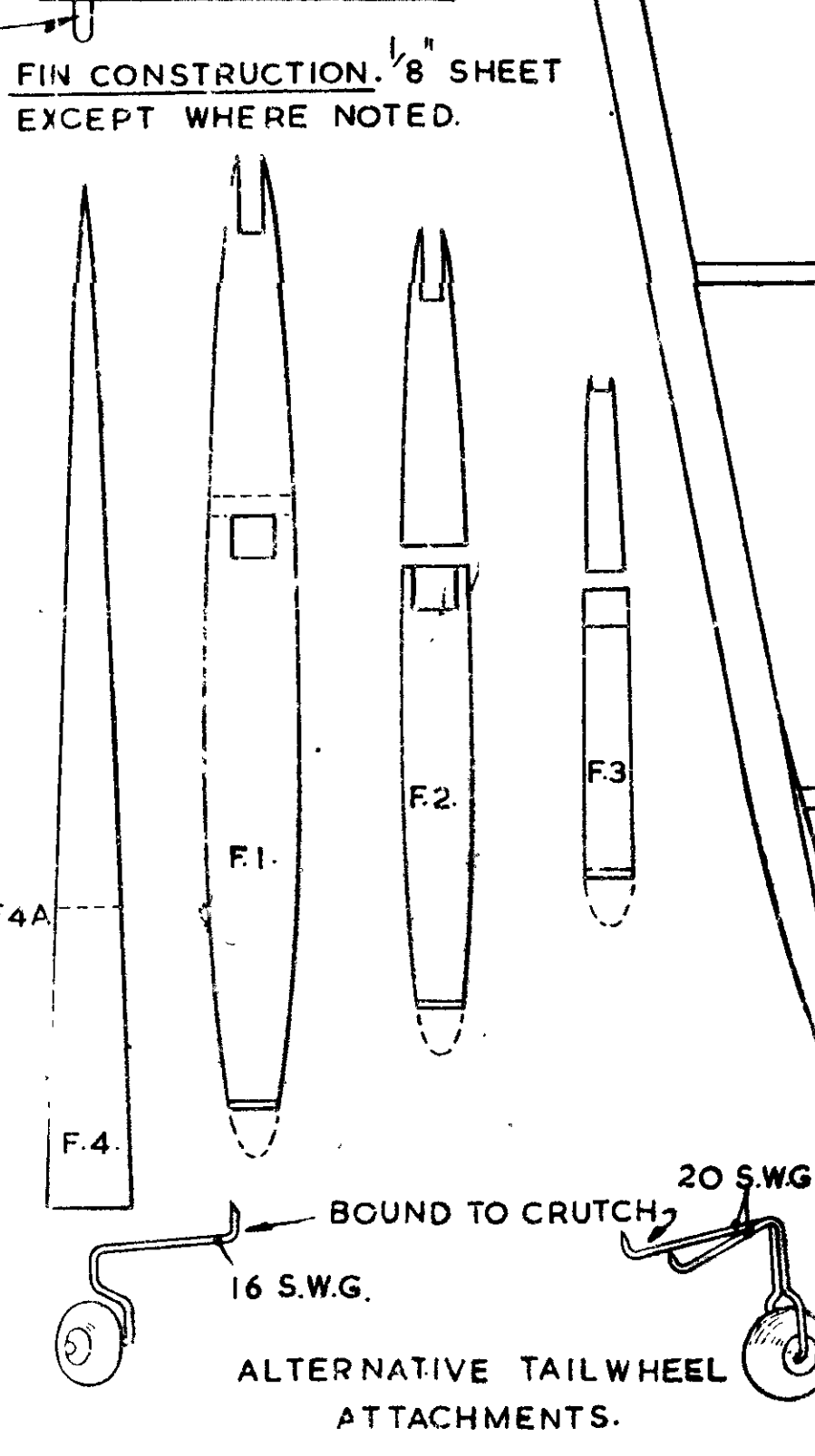
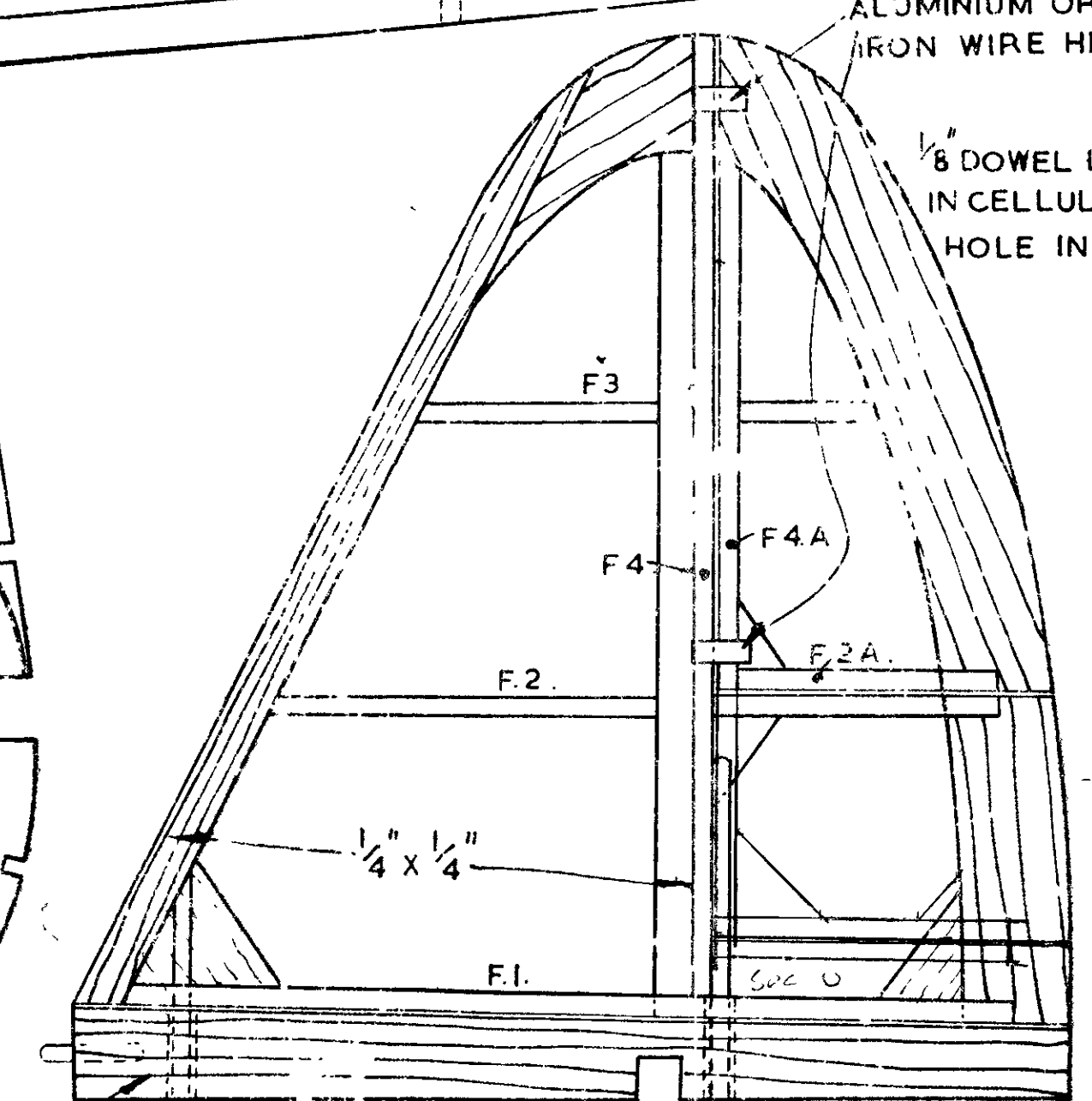
BATTERY BOX IF PETROL ENGINE  
IS USED.

WING BRACE 1/16 PLY

1/4 x 3/8 CRUTCH ASSEMBLE WITH SCRAP CROSS PIECES  
WHICH ARE CUT AWAY AFTER INSERTION OF FORMERS.



**GENERAL NOTES**  
DIFFERENT MOTORS WILL NATURALLY AFFECT THE  
C.G. POSITION BALLAST MAY BE ADDED BENEATH THE  
TAILPLANE AS REQUIRED. THE FUSELAGE SHOULD  
BE COVERED WITH RAG PULP OR DOUBLE COVERED  
WITH HARD TISSUE TWO COATS OF CLEAR DOPE &  
TWO OF COLOURED WILL GIVE A PLEASING FINISH &  
ADJ. WEIGHT IN THE RIGHT PLACE. THE NOSE MAY BE  
LENGTHENED UP TO 1". IF A PETROL MOTOR IS USED  
CONSTRUCTION REMAINS THE SAME. TRIMMING IS  
ACCORDING TO INDIVIDUAL TASTE. (THE MODEL HAS  
NO VICES) BUT 1 1/2" RIGHT SIDETHRUST MAY BE BUILT IN.



ENGINE MOUNT & COWLING  
DETAIL. BEARERS ARE SET  
THRO' FORMER 1 (WELL GLUED  
& BRACED) INTO NOSEBLOCK.  
COWL SIDE PANELS ARE BUILT  
UP OF 1/8 x 1/4 STRIPS. PAPER PATCH  
FROM 1/16 SHEET. 1/8 x 1/2 MAY  
BE USED AS STIFFENERS.  
LOWER COWL MAY BE CARVED  
OR MOULDED FROM CELLULOID.

ADDITIONAL 3/8 x 1/4  
CEMENTED TO TOP OF CRUTCH  
TO FORM PLATFORM

BAMBOO  
RUBBER BAND  
RETAINER.

3/4 WHEEL.

1/8 SHEET

E. 3.

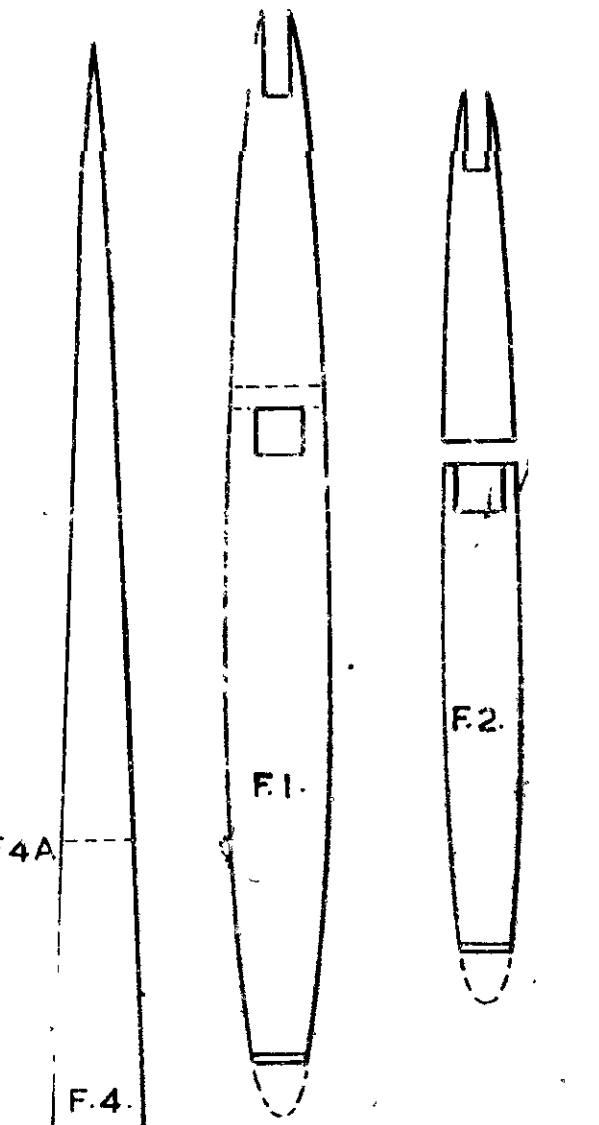
1/4 x 1/4

E. 2.

E. 1.

CARVE BLOCK TO  
FAIR IN TAILPLANE  
& FIN WITH FORMER 9.

FIN CONSTRUCTION. 1/8 SHEET  
EXCEPT WHERE NOTED.



20 SWG.  
16 SWG.  
ALTERNATIVE TAILWHEEL  
ATTACHMENTS.