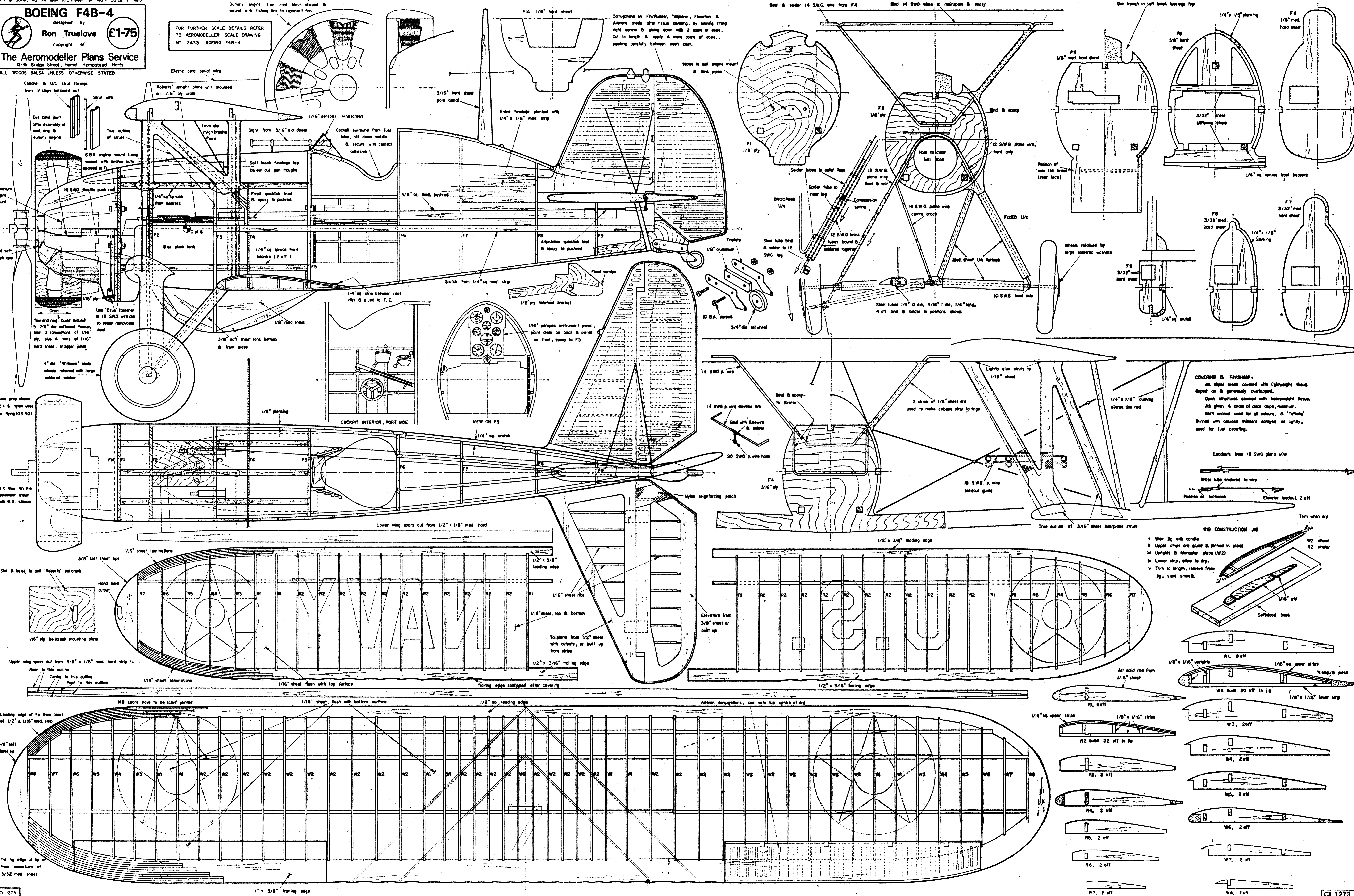


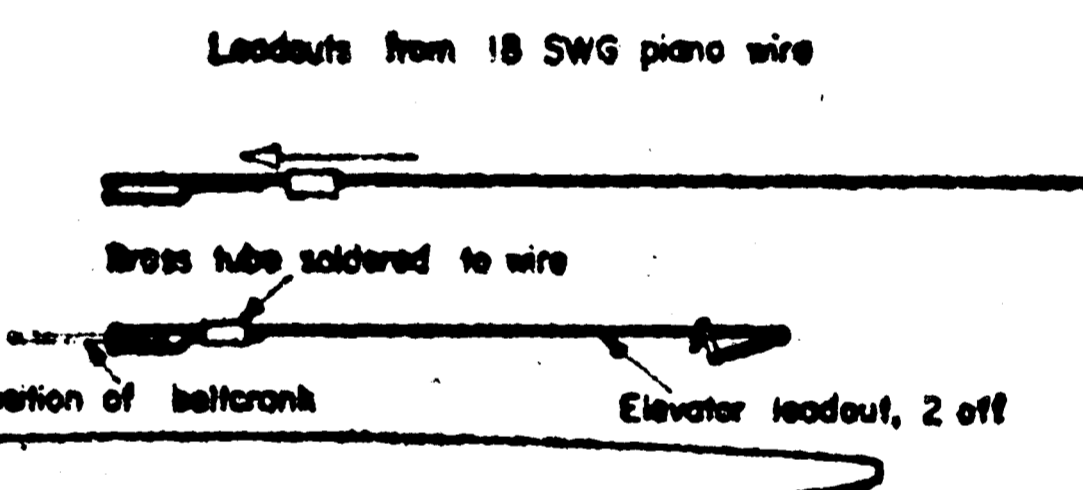
ALL WOODS BALSAs UNLESS OTHERWISE STATED



FOR FURTHER SCALE DETAILS REFER TO AEROMODELLER SCALE DRAWING N° 2673 BOEING F4B-4

Corrugation on Fin/Rudder, Tailplane & Ailerons made after tissue covering, by pinning string right across B gluing down with 2 coats of dope. Cut to length & apply 4 more coats of dope, standing carefully between each coat.

**COVERING & FINISHING:**  
 All sheet areas covered with lightweight tissue doped on B generally overlapped.  
 Open structures covered with heavyweight tissue. All given 4 coats of clear dope, minimum.  
 Matt enamel used for all colours, & 'Turbo' thinned with cellulose thinners sprayed on lightly, used for fuel proofing.



**RIB CONSTRUCTION JIG**

- i Wax jig with candle
- ii Upper strips are glued & pinned in place
- iii Uprights & triangular piece (W2)
- iv Lower strip, allow to dry.
- v Trim to length, remove from jig, sand smooth.

