

ENGINE END RING EMPLOYED ON LATE C3-R ONLY.
 BUILD UP WITH 1/8" THICK HALF RINGS AND CAREFULLY SAND TO
 SHAPE AS SHOWN.

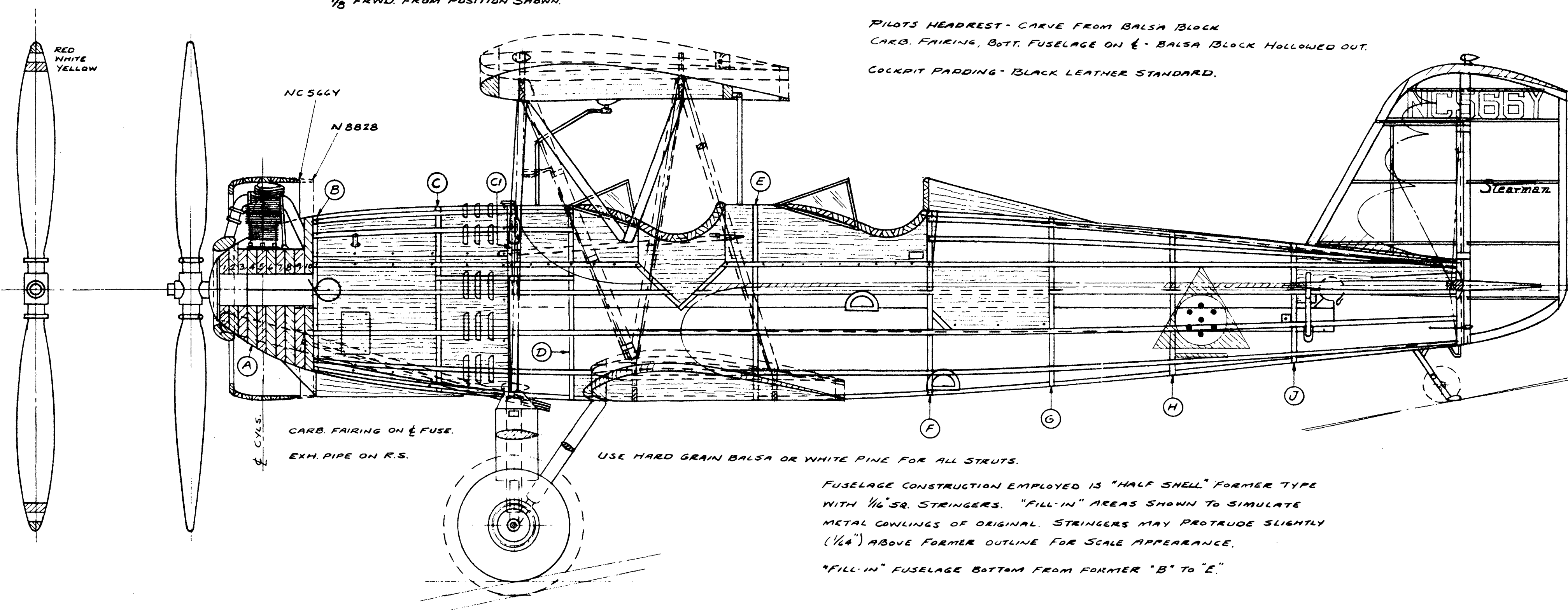
LOW PRESSURE 7.5" x 10" AIRWHEELS ON LATE C3-R ONLY. STANDARD
 30" x 5" DISC TYPE WHEELS USED ON OTHER MODELS OF C3-R & C3-B.

EARLIER C3-R HAD BOTH WINGS
 1/8" FRWD. FROM POSITION SHOWN.

FRAME TYPE WINDSHIELDS MADE FROM #13 M.W. (ABT. 1/32") AND
 CLEAR PLASTIC OR CELLULOID SHEET.

FRONT C.P. DOOR, REAR C.P. STEPS & BAGGAGE COMPARTMENT
 DOOR ON L.S. FUSELAGE ONLY.

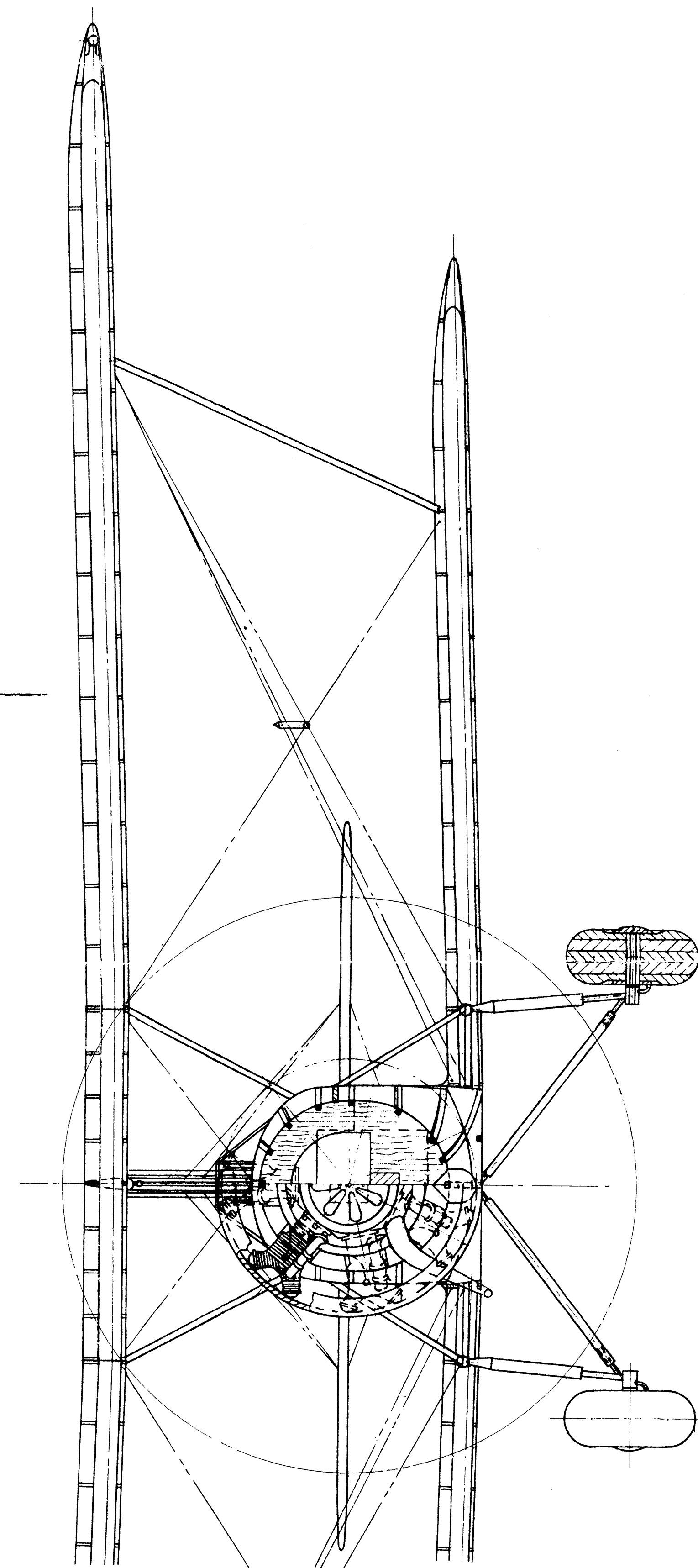
PILOTS HEADREST - CARVE FROM Balsa BLOCK
 CARB. FAIRING, BOT. FUSELAGE ON L - Balsa BLOCK HOLLOWED OUT.
 COCKPIT PADDING - BLACK LEATHER STANDARD.



CARB. FAIRING ON L FUSE.
 EXH. PIPE ON R.S.

USE HARD GRAIN Balsa OR WHITE PINE FOR ALL STRUTS.

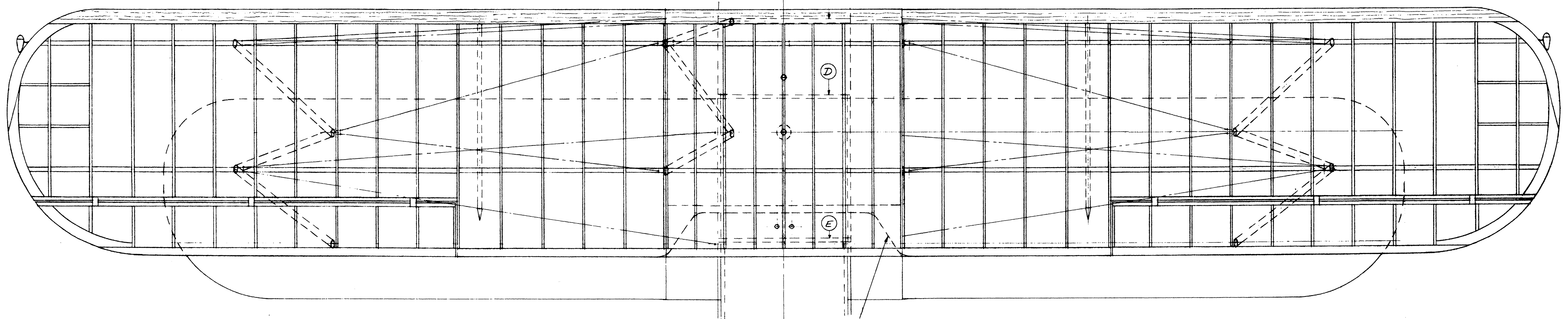
FUSELAGE CONSTRUCTION EMPLOYED IS "HALF SHELL" FORMER TYPE
 WITH 1/16" SQ. STRINGERS. "FILL-IN" AREAS SHOWN TO SIMULATE
 METAL CONVLINGS OF ORIGINAL. STRINGERS MAY PROTRUDE SLIGHTLY
 (1/64") ABOVE FORMER OUTLINE FOR SCALE APPEARANCE.
 "FILL-IN" FUSELAGE BOTTOM FROM FORMER "B" TO "E."



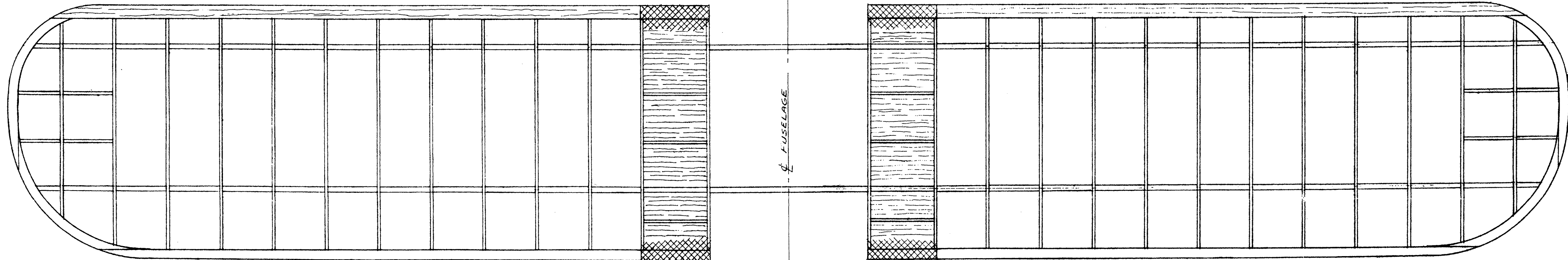
DATA REFERENCES:
 APPROX. 1/16" = 1'-0" SCALE OUTLINE & SPECS. "AERO DIECAST" AS REPRINTED
 IN "ANTIQUE LIGHTPLANE GUIDE", VOL. I, SUPERIOR PUBL.
 PHOTOS & SPECS. "STEARMAN GUIDEBOOK", M. MAYBORN, FLYING ENTERPRISES
 HANDBOOK SERIES.
 "U.S. CIVIL AIRCRAFT", VOL. I, J. JUPTNER.
 WRIGHT "WHIRLWIND" ENGINE DETAILS, 3/4" = 1'-0", M.A. WYLAN, M.A.N. PUBL.

1" W.S.
 26 7/8" W.S.
 9" LGT.
 18 7/8" LGT.
 6 15/16" HGT.
 6 1/2" HGT.

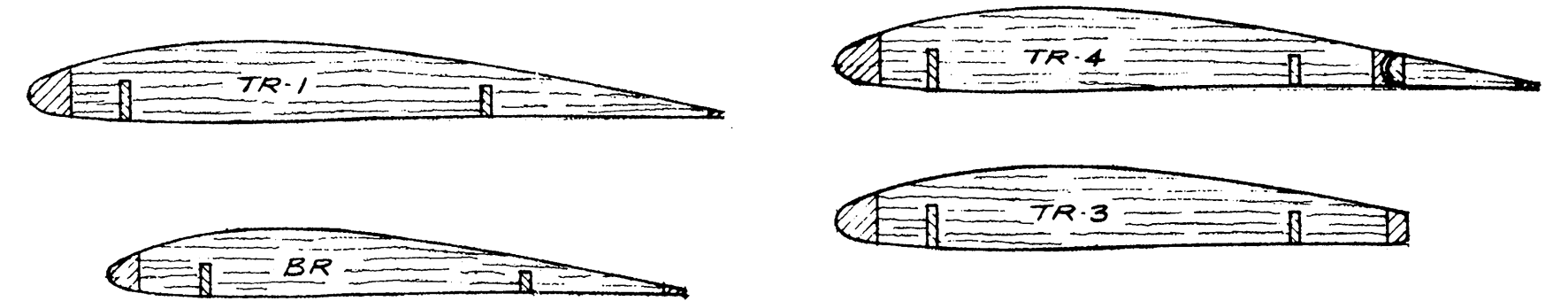
CUSTOM SCALE DESIGN PLAN CSD-14B	
1929-31 STEARMAN MODEL C3-R BIPLANE -	
BUSINESS SPEEDSTER OR SPORTSTER	
WRIGHT R-160 WHIRLWIND 7 CYLS. 210 HP	
DESIGN BY: G.E. STRINGER	SCALE: 3/4" = 1'-0"
DATE: FEB. 21, 1975	1/16TH FULL SIZE
CSD-14B	
SHEET 1 OF 2	



TOP WING CENTER SECTION
CUTOUT ON C3-R ONLY



NC566Y NC566Y



WING WALK - TOP SURFACE BOTTOM WING AT FUSELAGE - PLYWOOD WITH NON-SLIP SURFACE - SAME COLOR AS WING.

TUBULAR TYPE CONTROL SURFACE HINGES MADE FROM THIN CU OR BRASS STRIP.

NAVIGATION LIGHTS - RED L.S. TOP WING TIP, GREEN R.S. TIP & WHITE ON RUDDER. USE CLEAR COLORED GLASS OR PLASTIC BEADS, GRIND TO STREAMLINE SHAPE.

STEARMAN #2 OR #6 AIRFOIL SECTIONS EMPLOYED. BASICALLY SIMILAR TO CLARK Y-12 WITH SLIGHT NEGATIVE CAMBER ON BOTTOM TO T.E. CUT RIBS FROM 1/32" SHEET Balsa.

0° INCIDENCE, BOTH WINGS, SCALE. MAKE 1° FOR R.P. FLYING MODEL, 2° DIEDRAL, BOTH WINGS, SCALE.

MAKE LANDING, FLYING & GUY WIRES FROM HEAVY SILK OR NYLON THREAD FOR R.P. MODEL. USE LIGHT M.W. FOR EXHIBITION MODEL.

COLOR SCHEMES AND MARKINGS:

PLANE NO. NC566Y (DEPICTED) - LATE MODEL C3-R EQUIPPED WITH AIRWHEELS, TAIL SKID & NARROW ENGINE END RING. BRILLIANT SHADE LIGHT GOLD WINGS & HORIZ. TAIL SURFACES, NOSE & FUSELAGE TRIM STRIPE SCALLOP AND SCALLOPING ON FIN & RUDDER, WINDSHIELD FRAMES, HEADREST, WHEEL HUBS, TRIM CIRCLE ON WHEEL DISC, WING STRUTS, L.G. STRUTS AT FUSELAGE JUNCTION. PROP & EXHAUST COLLECTOR NATURAL ALUMN. REMAINDER OF PLANE GLISTENING SNOW WHITE. ENAMEL BLACK LETTERING ON WINGS & VERT. TAIL SURFACES. INSIGNIA, B.S. FUSELAGE (IDENTITY UNKNOWN), BLACK TRIANGLE, BAR & DOTS, WHITE CIRCLE IN TRIANGLE. COCKPIT & HEADREST PADDING RICH LIGHT BROWN LEATHER. OTHER MISC. DETAILS BLACK.

PLANE NO. N8828 - RESTORATION OF EARLY C3-R (ORIGINAL NC8828, IN YELLOW & BLUE) EQUIPPED WITH ENGINE END RING, STD. WHEELS, TAIL WHEEL, FRAME TYPE WINDSHIELDS. ENTIRELY BRILLIANT STEARMAN RED (MEDIUM VERMILION) WITH DARK ENAMEL BLUE TRIM & STRIPE ON FUSELAGE, EDGING ON L.E. OF BOTH WINGS, TAIL SURFACES, TOP & BOTTOM, LETTERING ON WINGS & RUDDER. ALL BLUE TRIM OUTLINED WITH 1/2" (1/32" ON MODEL) WIDE WHITE STRIPE. PROP & EXHAUST COLLECTOR PIPE NATURAL ALUMN, MISC. DETAILS BLACK.

COLOR SCHEMES & MARKINGS - CONTO.:

PLANE NO. NC799H - EARLY MODEL C3-R, STD. WHEELS, TAIL SKID, FORMED WINDSHIELDS, WITHOUT ENGINE END RING. ENTIRELY GLISTENING WHITE WITH DARK ENAMEL BLUE FUSELAGE TRIM PANEL STARTING AT FRONT C.P. AND ENDING IN AN UPSHEEP ON RUDDER T.E., AND ALL LETTERING. PROP & EXHAUST PIPE NATURAL ALUMN, MISC. DETAILS BLACK.

NOTE THAT ALL EARLY C3-R MODELS HAD BOTH WINGS 1/8" (ON MODEL) FORWARD FROM POSITION SHOWN ON DRAWING.

L.G. STRUT JUNCTION STREAMLINER ON EARLY C3-R AND SOME LATE MODELS (OMITTED ON NC566Y & N8828).

PITOT TUBE, LEAD-IN & BANDS ON L.S. FRWD. WING BAY STRUT - MAKE FROM STRAIGHT CU WIRE & THIN CU STRIP.

CUSTOM SCALE DESIGN PLAN CSD-14B	
1921-31 STEARMAN MODEL C3-R BIPLANE - "BUSINESS SPEEDSTER" OR "SPORTSTER" WRIGHT R-760 "WHIRLWIND" 7-CYL 240 HP	
DESIGN BY: C. E. STEINCHAK	SCALE: 3/4" = 1'-0"
DATE: FEB. 21, 1975	1/16TH FULL SIZE
CSD-14B	
SHEET 2 OF 2	