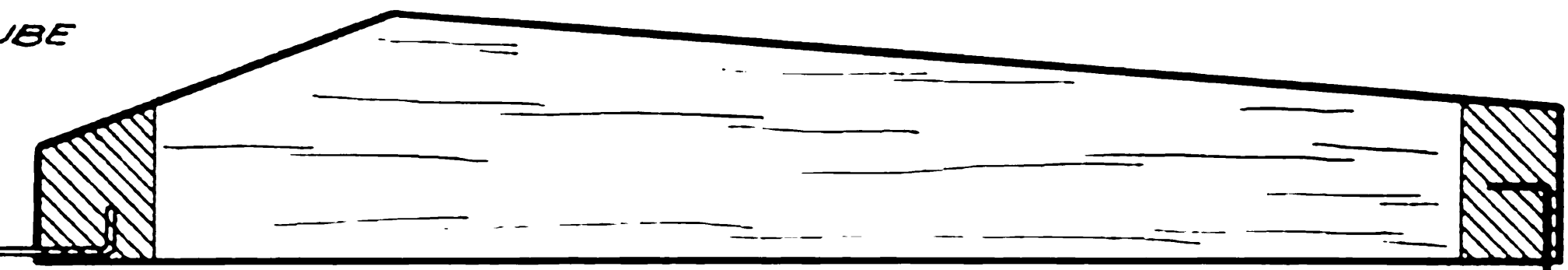
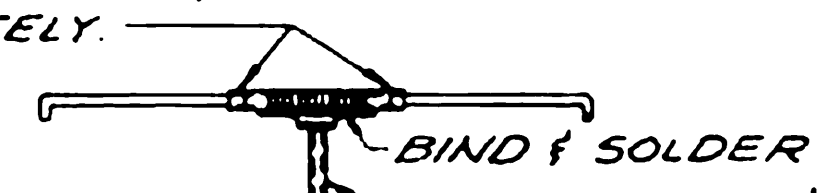
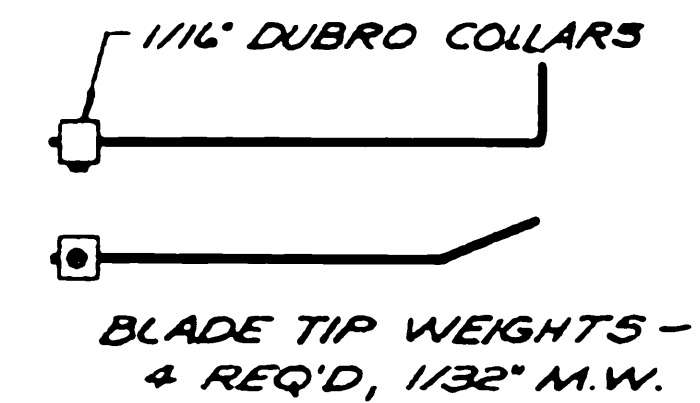
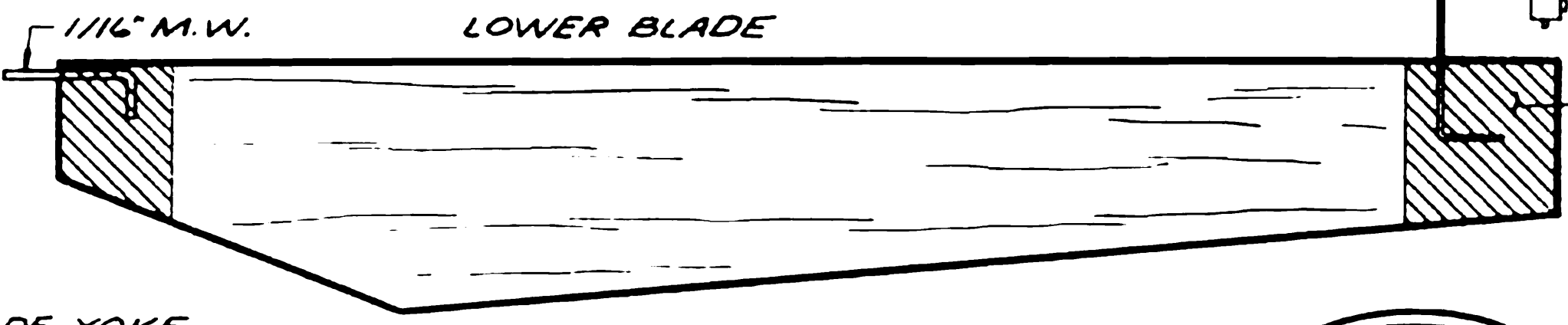


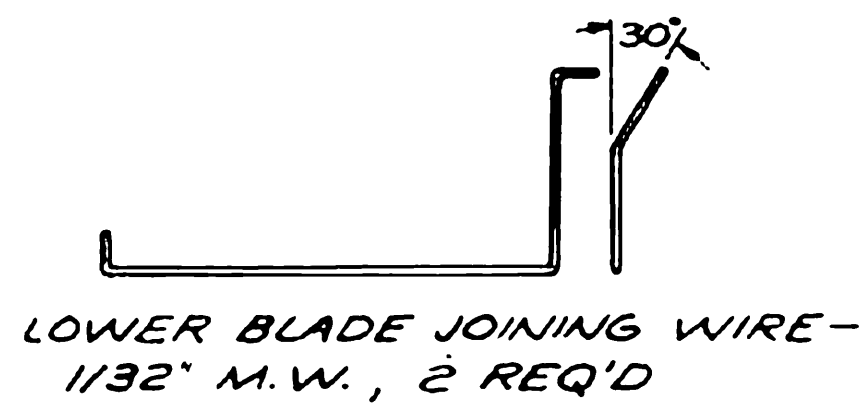
SOLDER SHORT LENGTH OF 3/32" TUBE TO 1/16" M.W., WIRE MUST ROTATE FREELY.



ALL ROTOR BLADES 1/16" SHT., 2 OF EACH REQ'D, BOTTOM OF BLADES SHOWN.



REINFORCE WITH SILKSPAN OVER WIRES



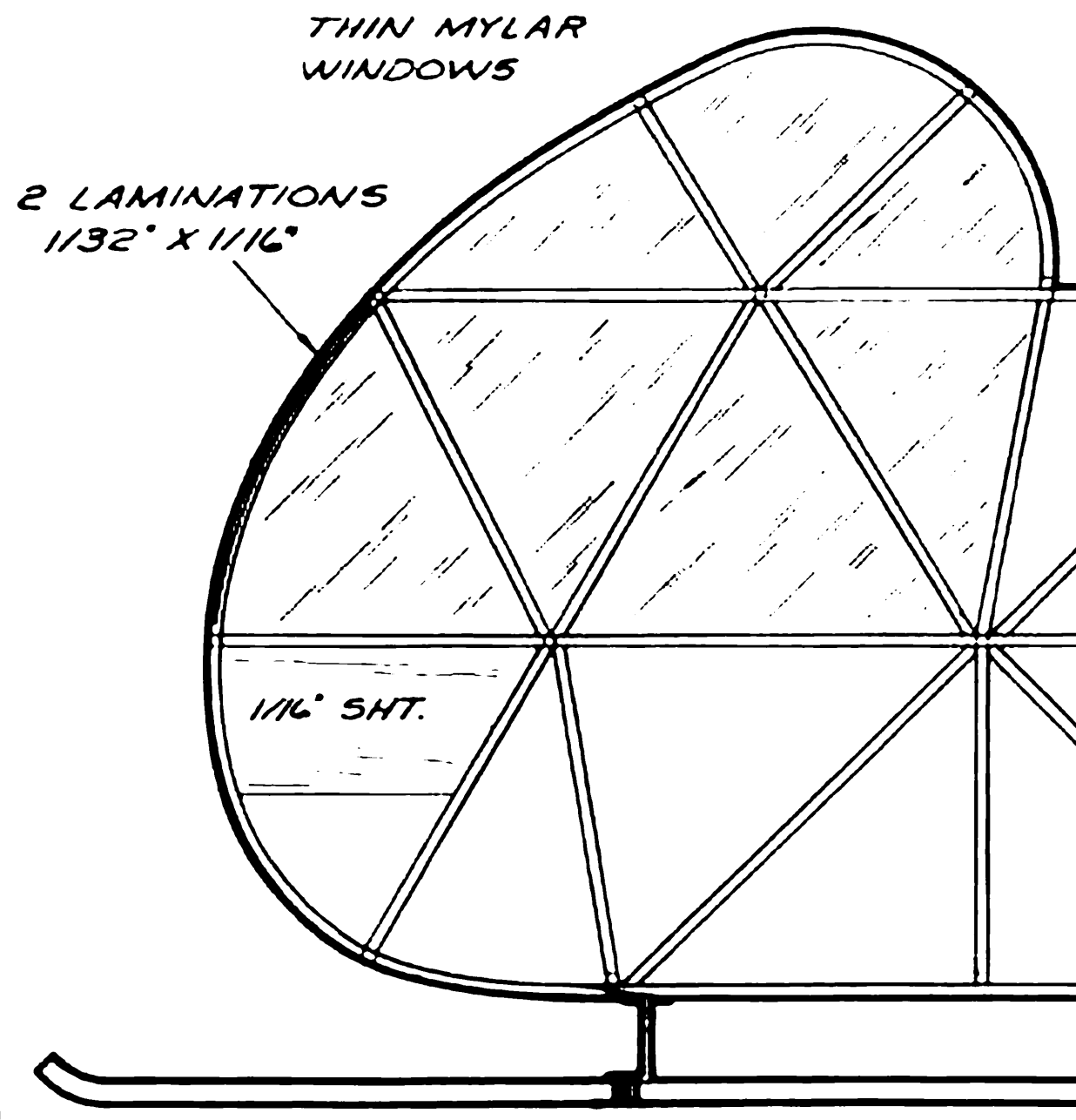
END CAP IS REMOVABLE

1/16" BRASS TUBE SOLDERED INSIDE OF 3/32" BRASS TUBE
1/32" M.W.

1/16" SHT. Balsa TUBE

LOWER BLADE YOKE

MAIN FUSELAGE STRUCTURE 1/16" SQ., COVERED WITH LIGHT TISSUE



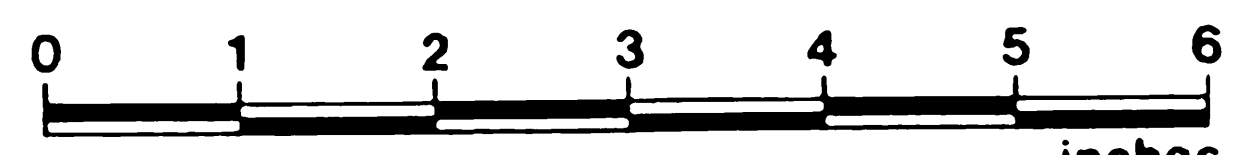
COVER ONE SIDE ONLY

2 LAMINATIONS 1/32" X 1/16"

1/16" X 1/8"

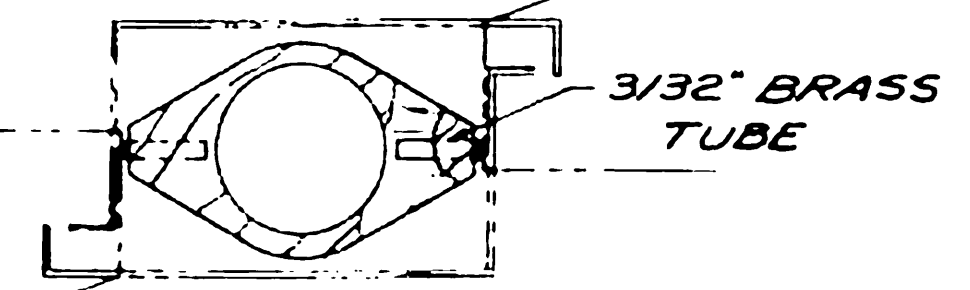
1/16" SQ.

1/16" SQ.

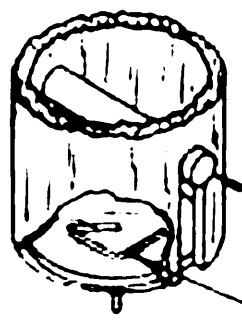


MODEL BUILDER magazine
1105 Spurgeon, Santa Ana, California 92701

Plan No: 11742



LOWER BLADE YOKE MADE BY SANDWICHING 3/32" SHT. BETWEEN 2 Pcs. 1/32" PLY.



1/8" DOWEL - TACK GLUE INTO PLACE
1/32" M.W.

1/16" TUBE

FOOTE "HUGHES 300"
ROTOR SPAN - 22"
POWER - 4 STRANDS 3/16" RUBBER
DESIGNED & DRAWN BY ROY FOOTE
TRACED FOR M.B. BY PHIL BERNHARDT