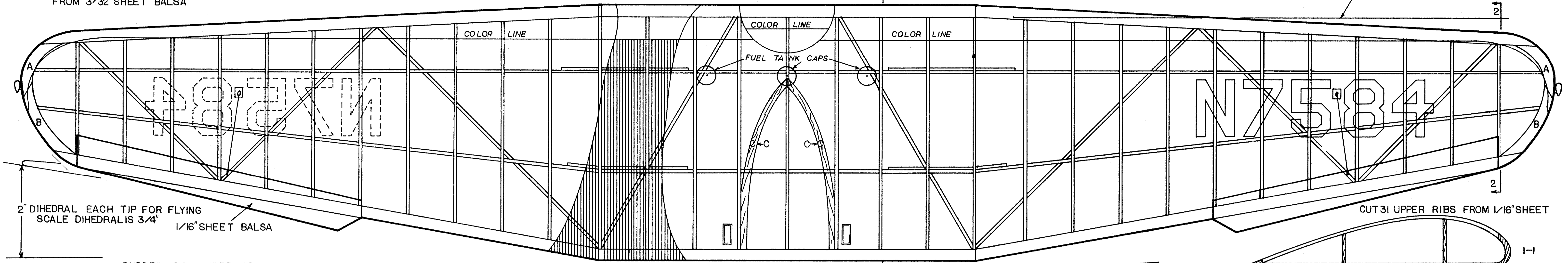


WING AND STAB TIPS ARE CUT FROM 3/32" SHEET BALSA

PLACE UPPER WING RIBS AGAINST THIS LINE AND TRIM ENDS TO FIT EACH LOCATION



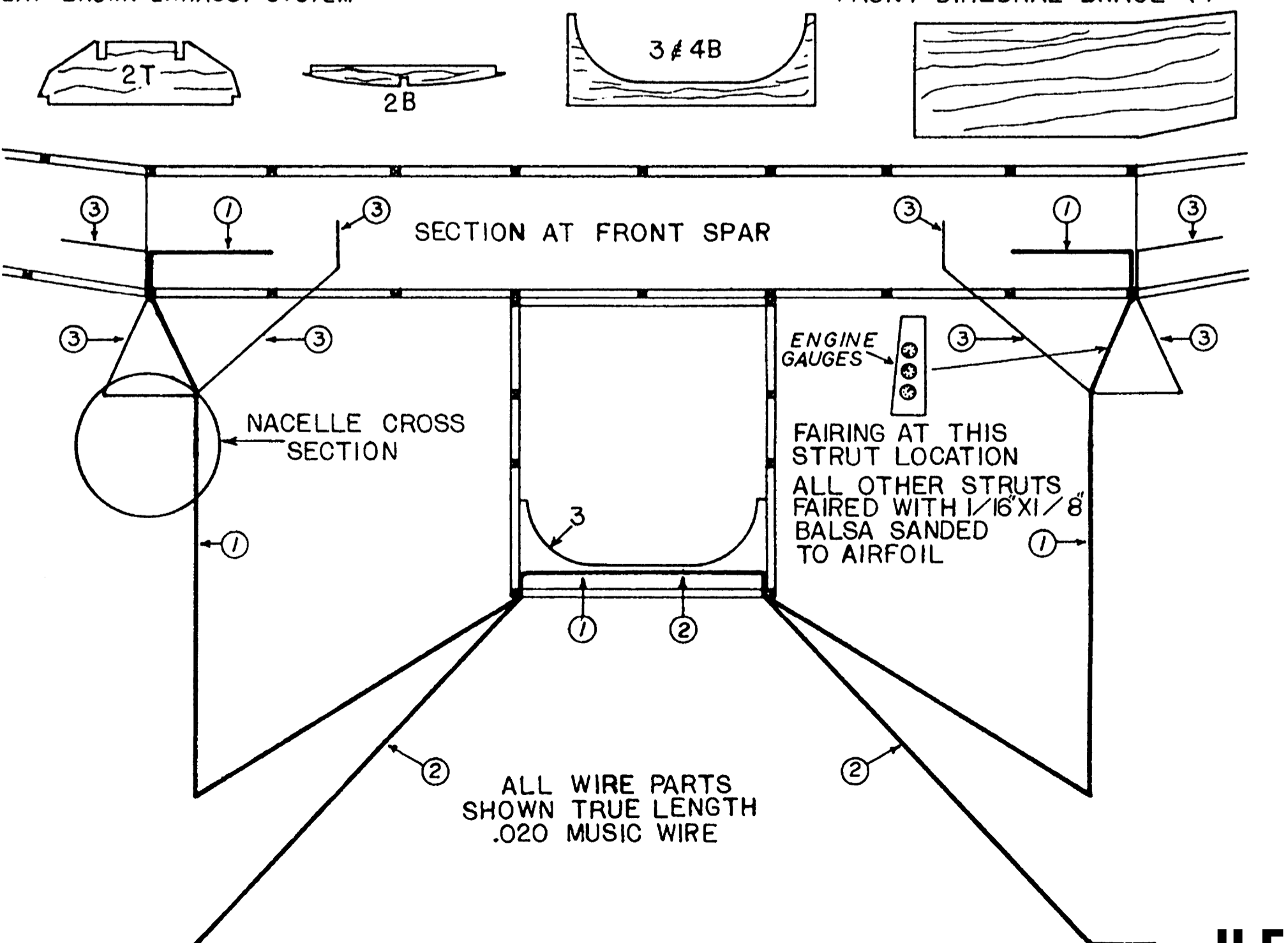
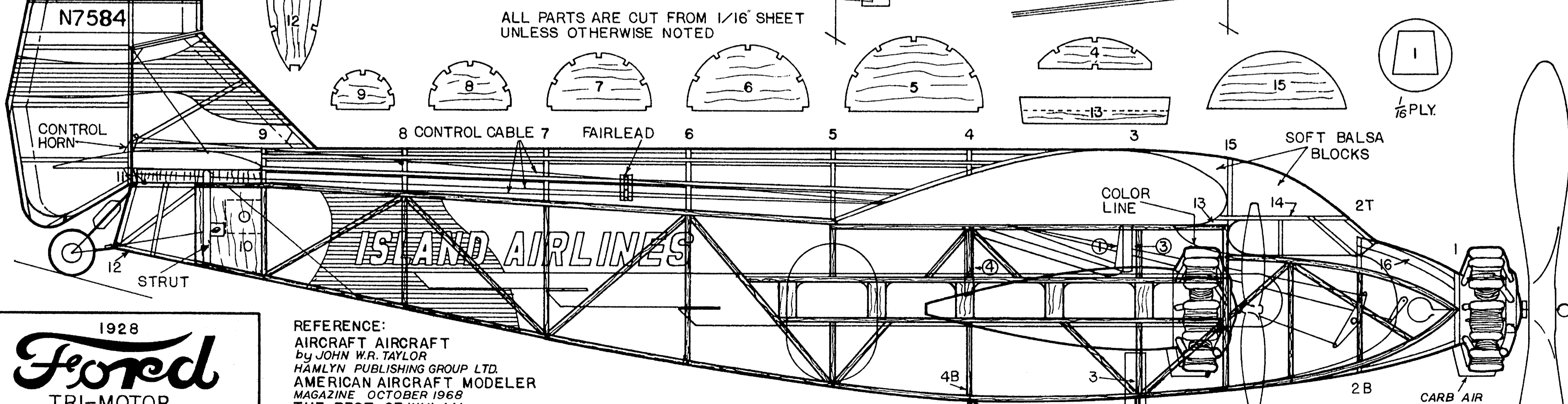
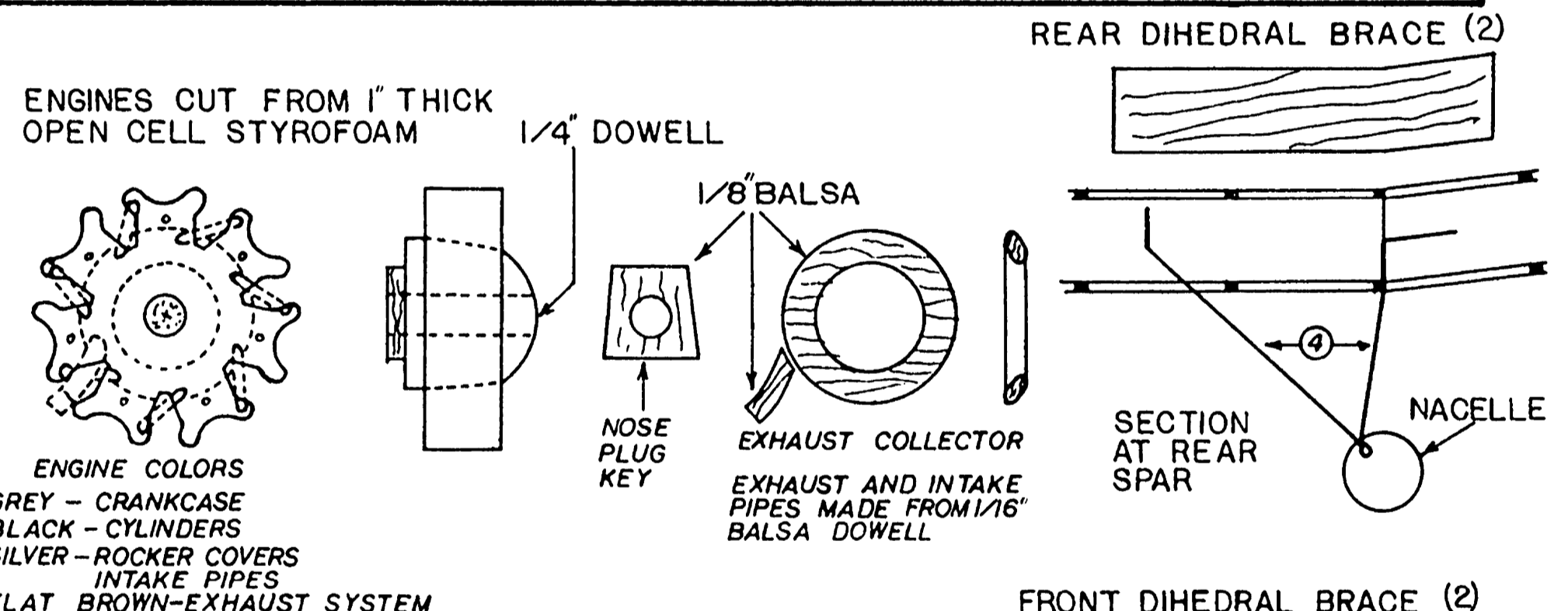
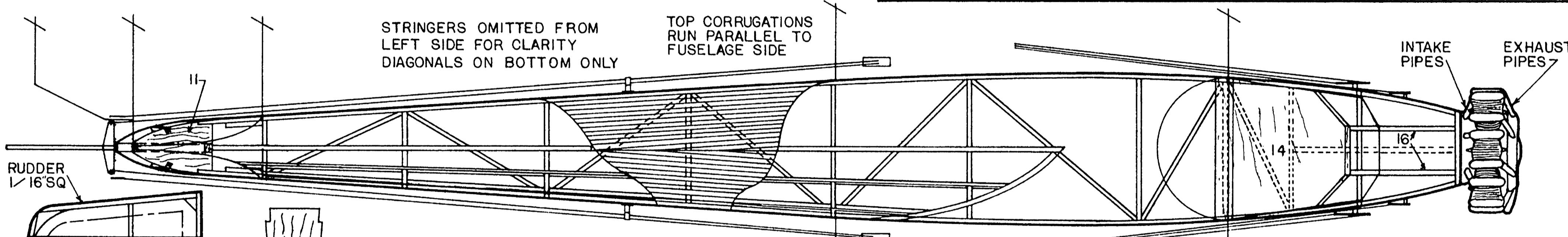
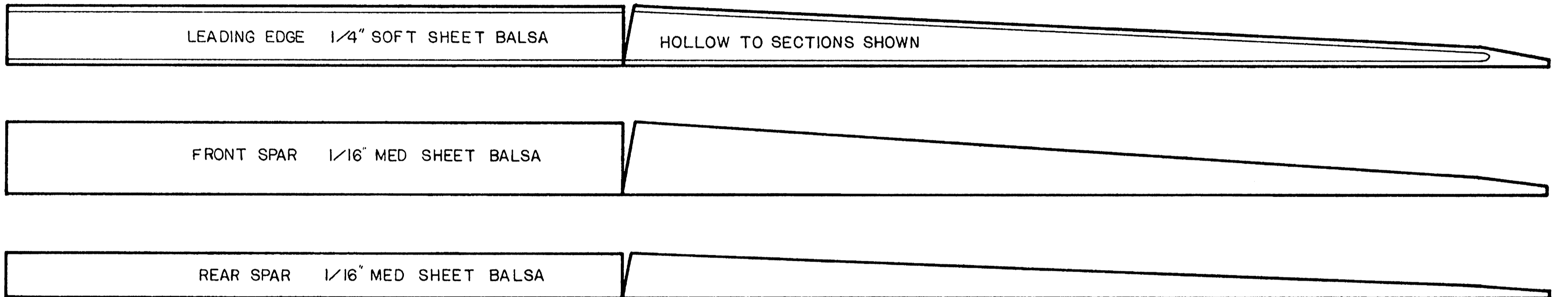
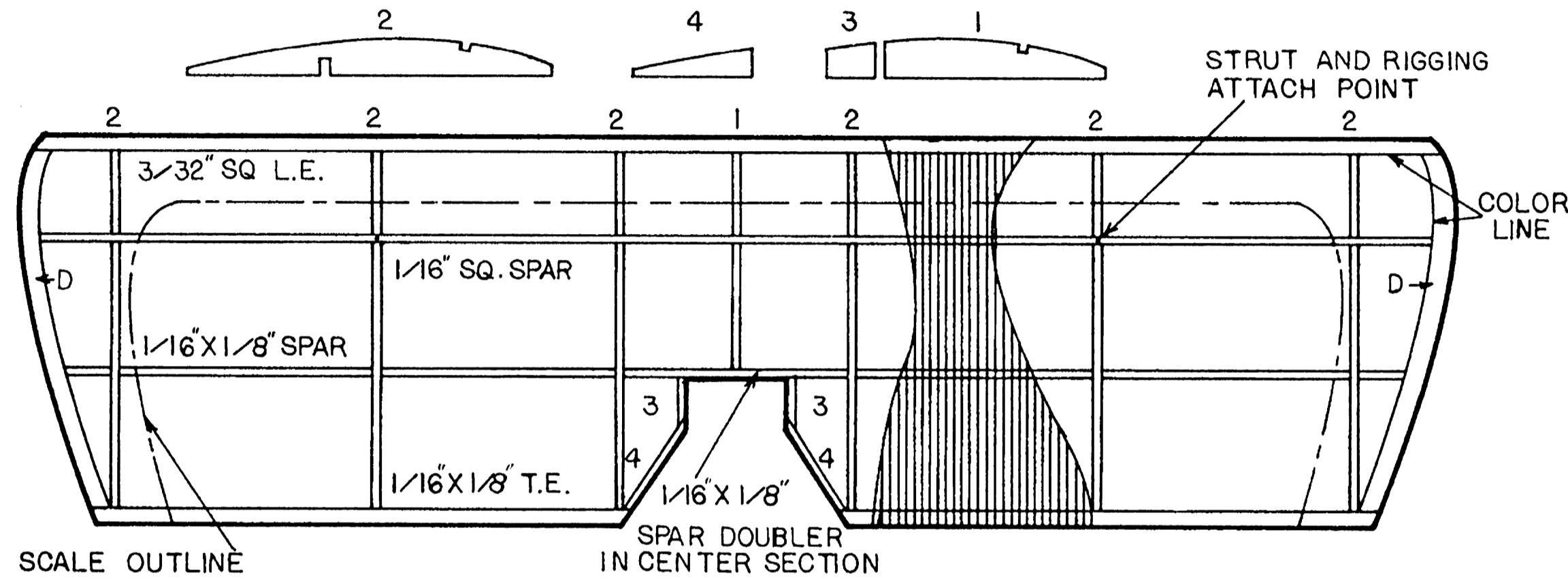
2" DIHEDRAL EACH TIP FOR FLYING
SCALE DIHEDRAL IS 3/4" 1/16" SHEET BALS

RUDDER STABILIZER BRACE WIRES
MADE FROM ELASTIC THREAD

TRAILING EDGE 1/8" X 1/4" MED. BALS

AILERON HORN DETAIL

CUT 31 UPPER RIBS FROM 1/16" SHEET



ALL PARTS ARE CUT FROM 1/16" SHEET UNLESS OTHERWISE NOTED

1928
Ford
TRI-MOTOR
DESIGNED AND DRAWN BY
TEX NEWMAN
32 1/2" RUBBER POWERED
SCALE MODEL

REFERENCE:
AIRCRAFT AIRCRAFT
by JOHN W.R. TAYLOR
HARVILL PUBLISHING GROUP LTD.
AMERICAN AIRCRAFT MODELER
MAGAZINE OCTOBER 1968
THE BEST OF WYLAN BOOK 2
COMPILED BY Wm C NORTHROP JR.
AIR AGE, INC.
AIR CLASSICS MAGAZINE
NOVEMBER 1974

FLYING THE OLD PLANES
FRANK TALLMAN
DOUBLEDAY & COMPANY, INC.
ISLAND AIRLINES
PORT CLINTON, OHIO
MR. DAVE HABERMAN
GENERAL MANAGER

COLOR SCHEME
WHITE ENTIRE AIRCRAFT
NUMBERS ON RUDDER
BLUE TRIM ON NOSE AND FUSELAGE
BOTTOM TO STATION 4, ABOVE
COCKPIT, WING AND STABILIZER
LEADING EDGES AND TIPS, STRUTS
RED SIDE WINDOW TRIM AND TOP
OF RUDDER
BLACK FUSELAGE LETTERING AND
WING LICENSE NUMBERS, TIRES
SILVER PROPELLERS

0 1 2 3 4 5 6 inches
MODEL BUILDER magazine
Plan No: 2753

H.E