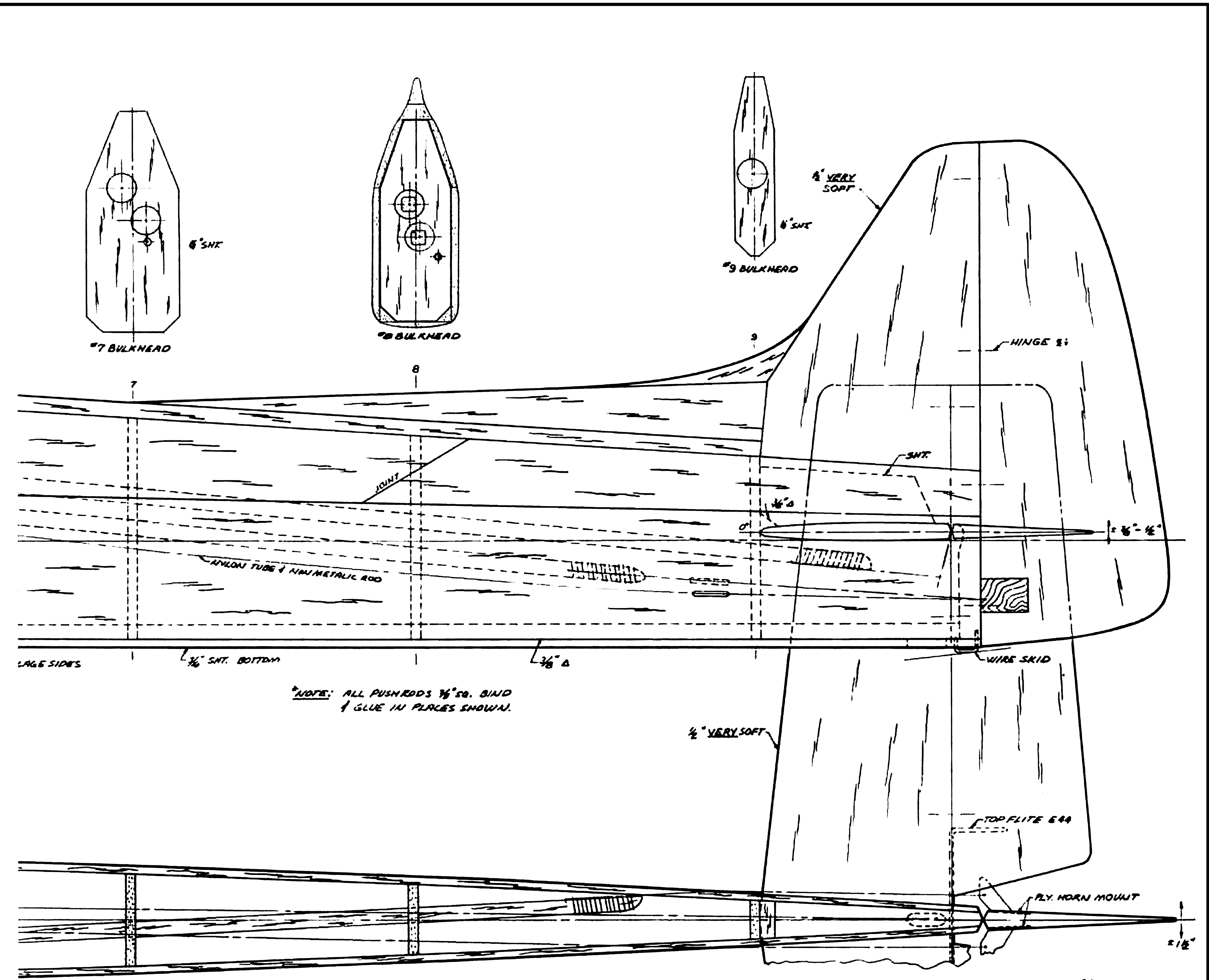


\*NOTE: FUSELAGE TOP & BOTTOM NOT SHOWN THIS VIEW



\*NOTE: ALL PUSHRODS 1/8" SQ. BIND & GLUE IN PLACES SHOWN.

\*NOTE: ALL PARTS Balsa UNLESS OTHERWISE NOTED

# DEN FLYGANDE HYVELBÄNKEN 18

DESIGNED & DRAWN BY:	0 1 2 3 4 5 6
BENGT LUNDSTRÖM	Inches
TRAINED FOR M.B. BY G.A. PATTERSON	
SPAN 15" 40 MM	
LENGTH 15" 60 MM	
WEIGHT (w/ fuel tank) 3500 GRAMS	

**MODEL BUILDER** magazine  
Plan No: 6761-A

