

STRAP CUT OUTS IN BOTTOM SHEETING

SG LANDING GEAR BLOCK

RIGHT WING PANEL

FOR MORE AILERON THROW

SHORT CAP STRIPS R8 & R9 RIBS BOTTOM ONLY

1/16" Balsa SHEET BOTTOM WING & AILERON

3/32" Balsa SHEET SPAR WEBS

NOTE ANGLE OF HINGE ASSEMBLY

1/16" Balsa SHEET FILL

3/16" Balsa SHEET AILERON END RIB

3/16" Balsa SHEET (SEE TEXT)

3/16" PLYWOOD AILERON HORN MOUNTING PLATE

3/16" Balsa SHEET AILERON END RIB

1/16" Balsa SHEET FILL

1/16" Balsa BOTTOM SHEETING

3/16" X 1/8" TE SHOWN ON PLAN NOT GLUED IN PLACE UNTIL TOP & BOTTOM TE SHEETING IS IN PLACE

NOTE 1/16" TOP SHEETING NOT SHOWN FOR CLARITY CAP STRIPS NOT SHOWN (TOP & BOTTOM) EXCEPT ON BOTTOM OF R8 & R9 RIBS

CUT OUT SHADED AREA AFTER COMPLETING WING ASSEMBLY

Balsa FILL - CUT TO FIT SECTION (A-A) R1 SIDE VIEW, SHEET 1

1/16" PLYWOOD DOUBLER ON BOTTOM FLUSH FIT. SECTION (A-A)

1/4" Balsa SHEET GUSSET

CUT OFF SHADED AREA AFTER STABILIZER HAS BEEN COMPLETED

3/32" BRASS TUBING

1/8" BRASS TUBING (SILVER SOLDER ALL COMPONENTS)

1/16" MUSIC WIRE

AILERON/SERVO CONNECTOR

1/4" Balsa SHEET STABILIZER & ELEVATOR TIPS

NOTE: DATUM (D) MUST BE PARALLEL TO BUILDING BOARD, MEASURED AT TIP RIB R12 & ROOT R8. RI ADJUST SHIM FOR EXACT HEIGHT ALL RIBS MUST REST ON SHIM

1/4" SO. HARD Balsa ELEVATOR L.E. & T.E.

1/8" X 3/8" Balsa STABILIZER SUPPORTS

1/8" X 1/4" Balsa RIBS

1/4" SO HARD Balsa LE

3/16" Balsa SHEET GUSSET

STABILIZER

TYPICAL SECTION (X-X)

1/8" BIRCH PLYWOOD

DUBRO HINGE

1/4" SO Balsa DOUBLER

1/8" X 1/4" Balsa DIAGONAL BRACES

3/16" SO. HARD Balsa CORE WITH 1/32" PLYWOOD CAPS, 1/4" WIDE (TOP & BOTTOM)

WING DIHEDRAL BRACES

1/8" LITE PLY

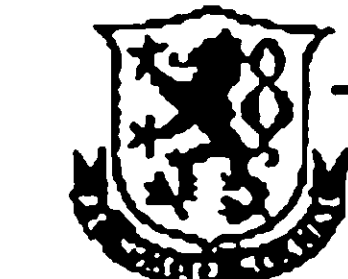
ELEVATOR

TAPER L.E. 1/4" TO 1/8" TE

1/4" SPRUCE ELEVATOR HORN MOUNTING PLATE

1/4" Balsa SHEET

1/4" HARDWOOD DOWEL



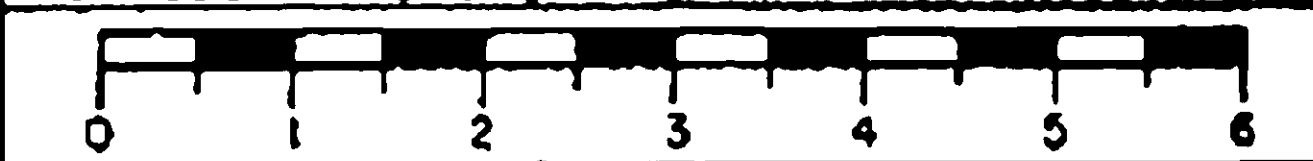
© ALL COMMERCIAL RIGHTS RESERVED

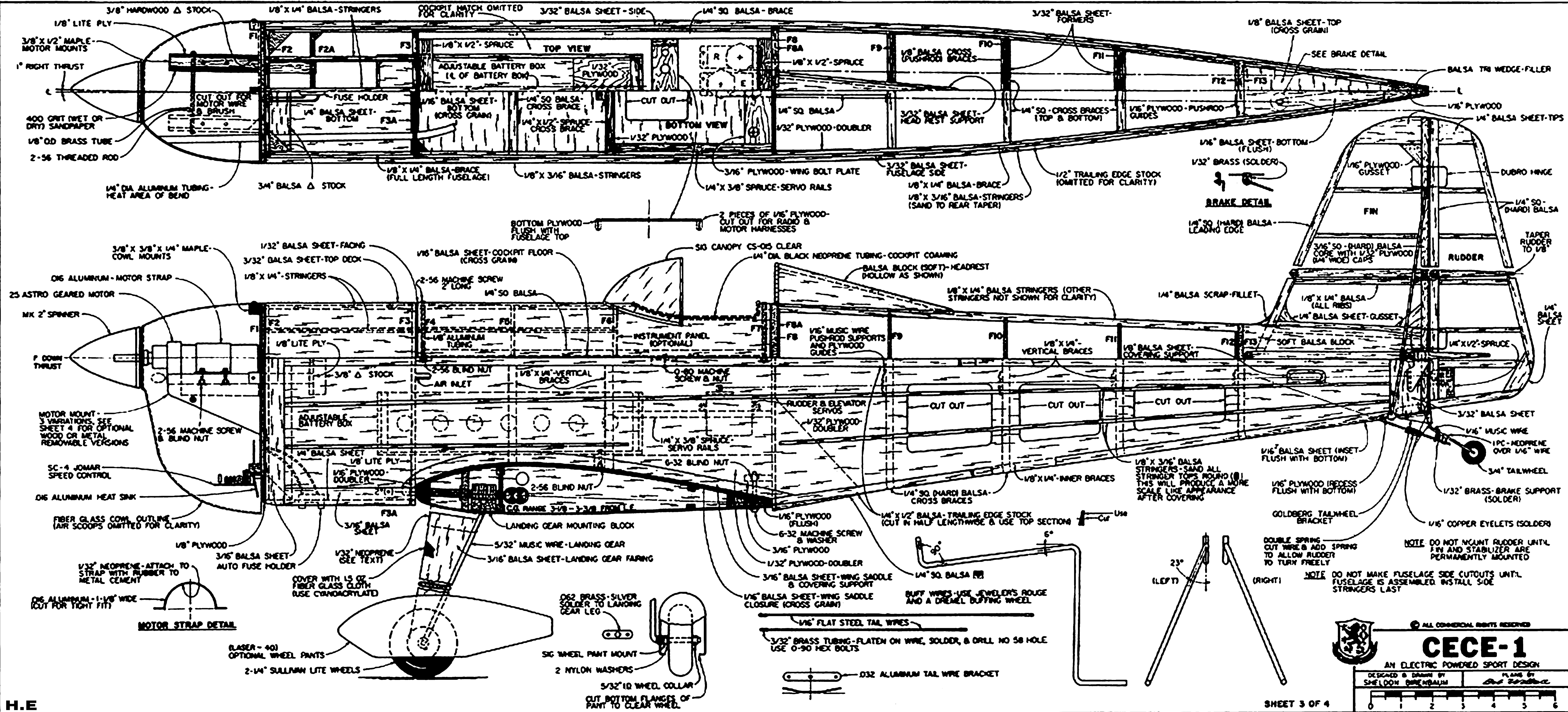
CECE-1

AN ELECTRIC POWERED SPORT DESIGN

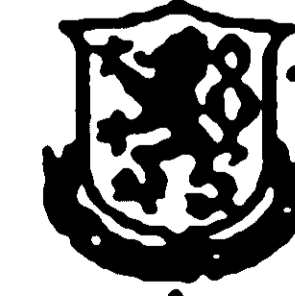
DESIGNED & DRAWN BY SHELDON BIRENBAUM

PLANS BY Bob Wallace





H.E



© ALL COMMERCIAL RIGHTS RESERVED

CECE-1

AN ELECTRIC POWERED SPORT DESIGN

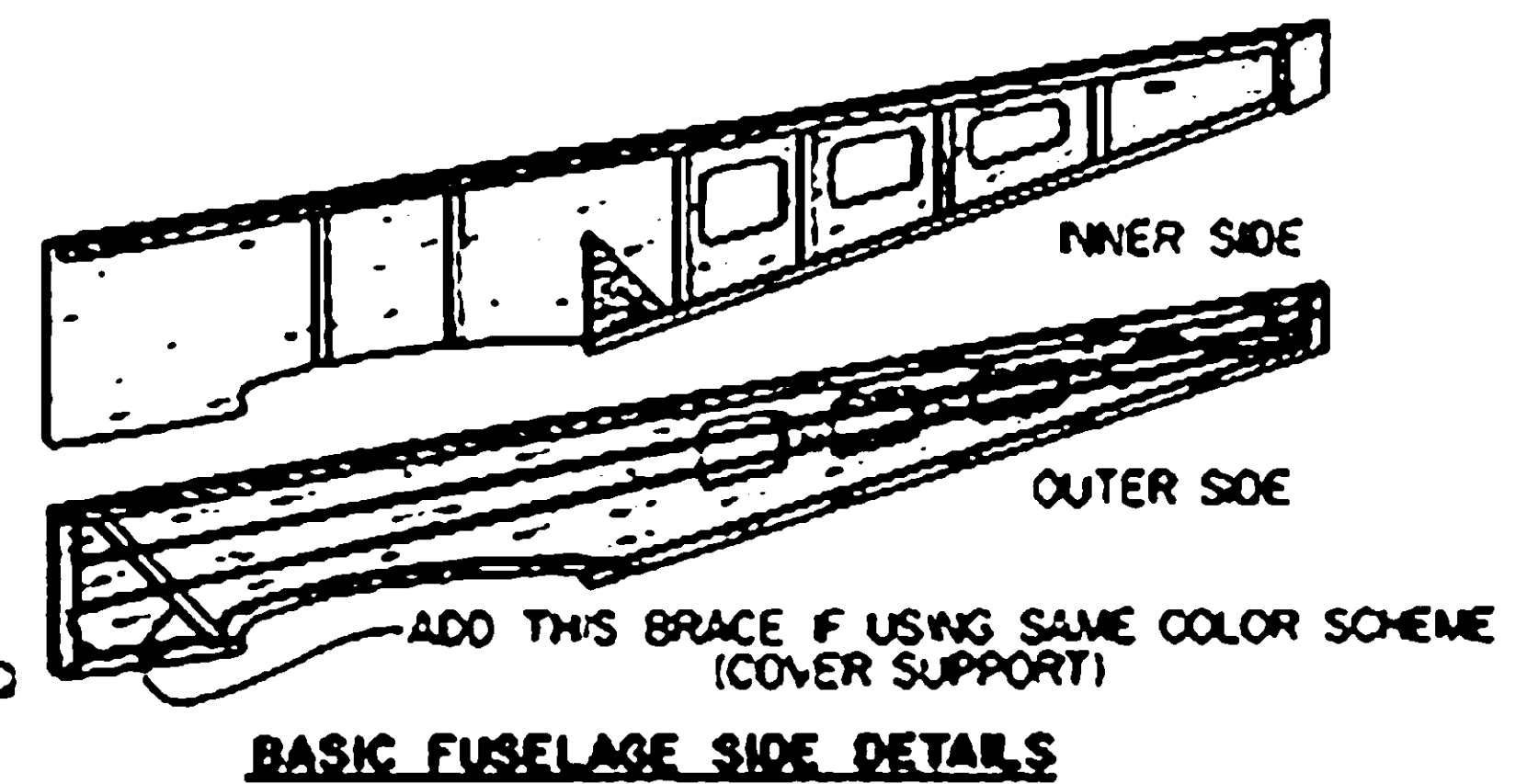
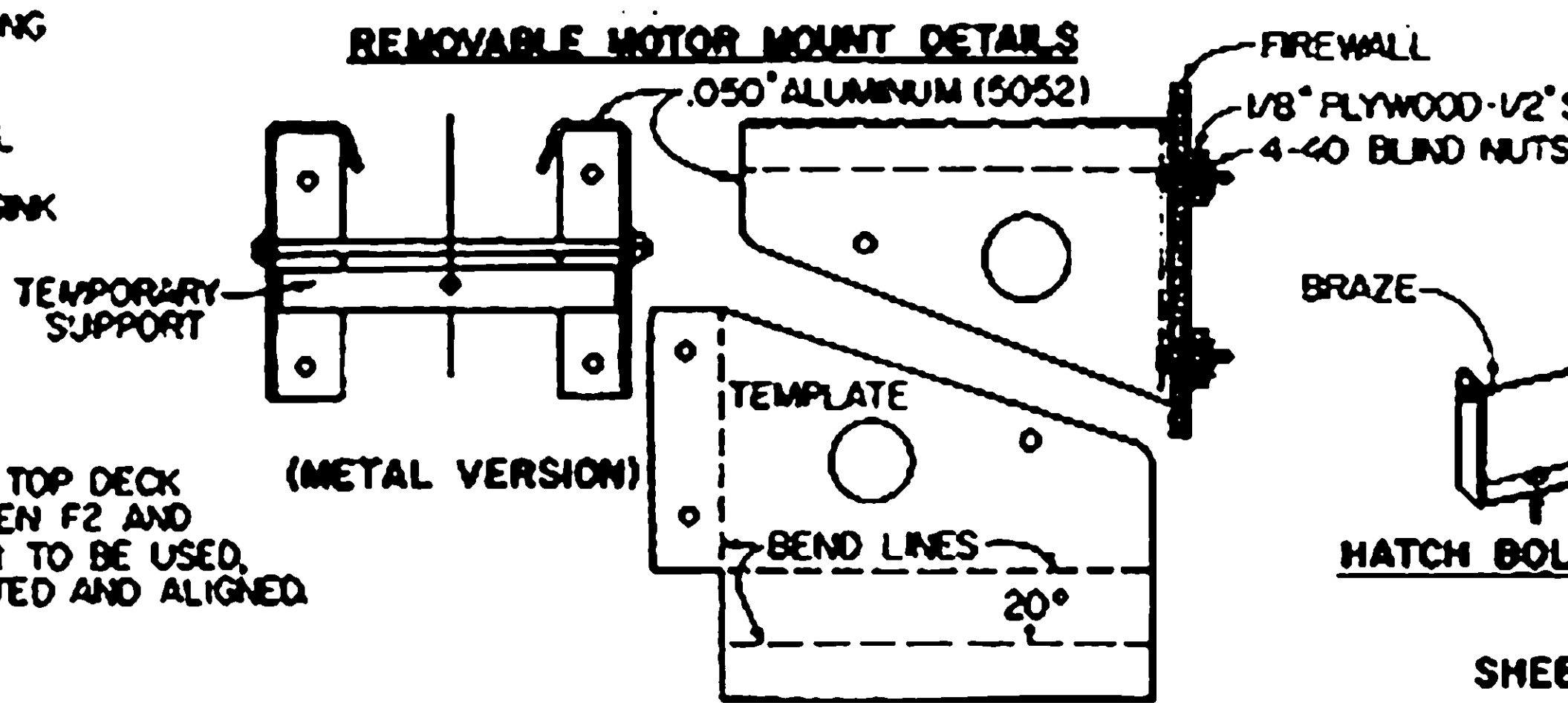
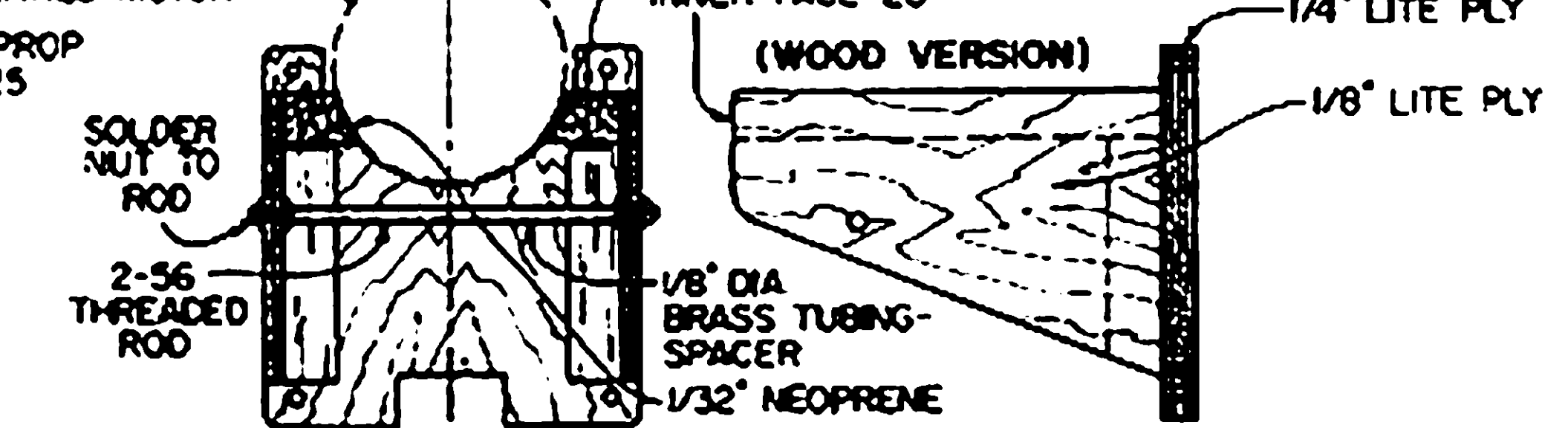
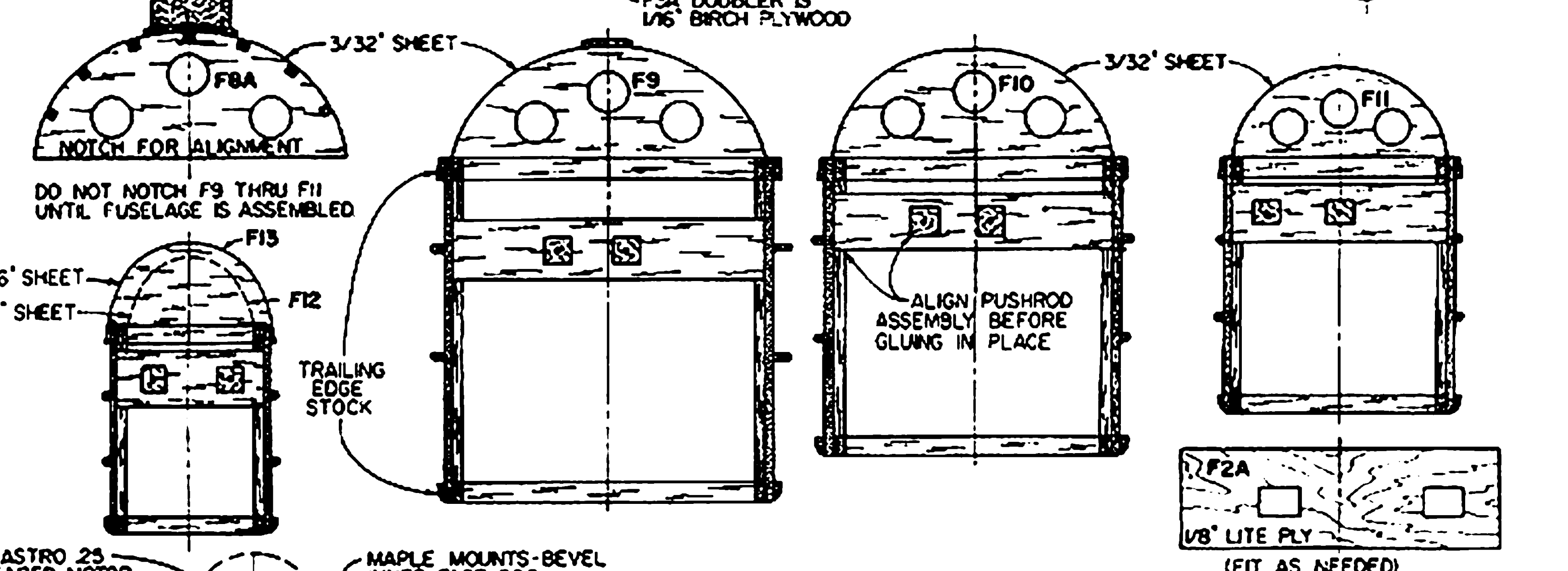
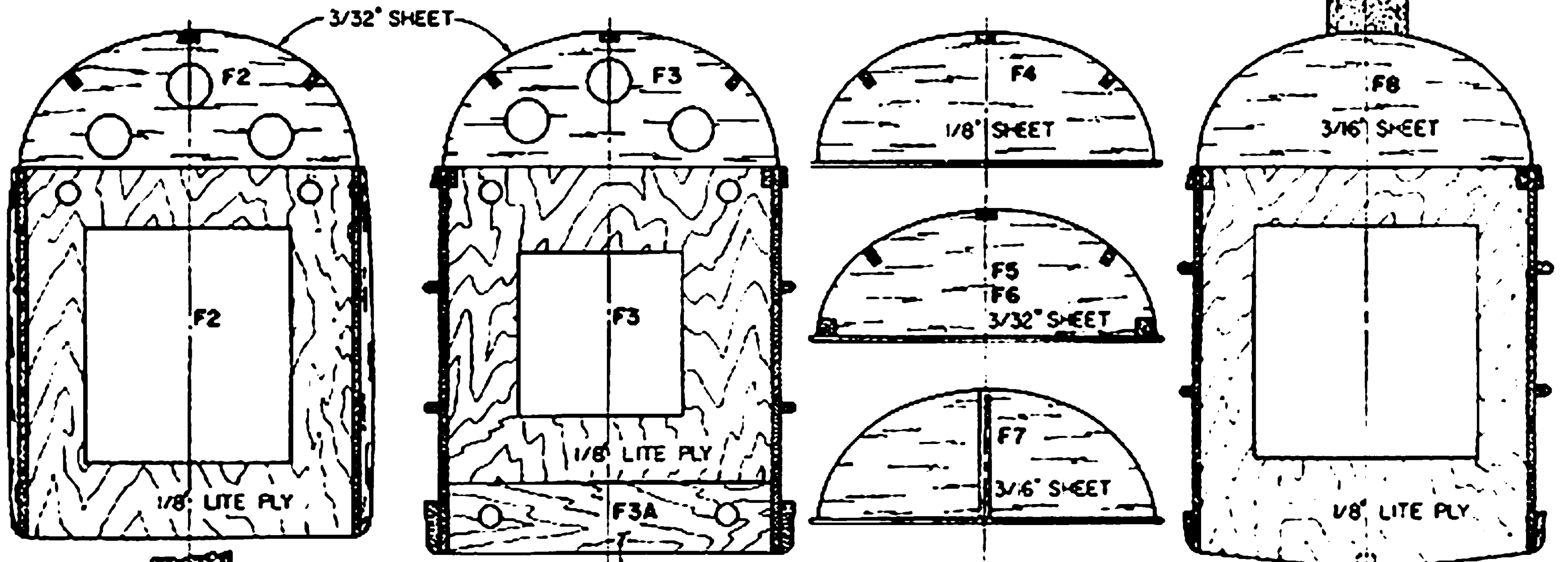
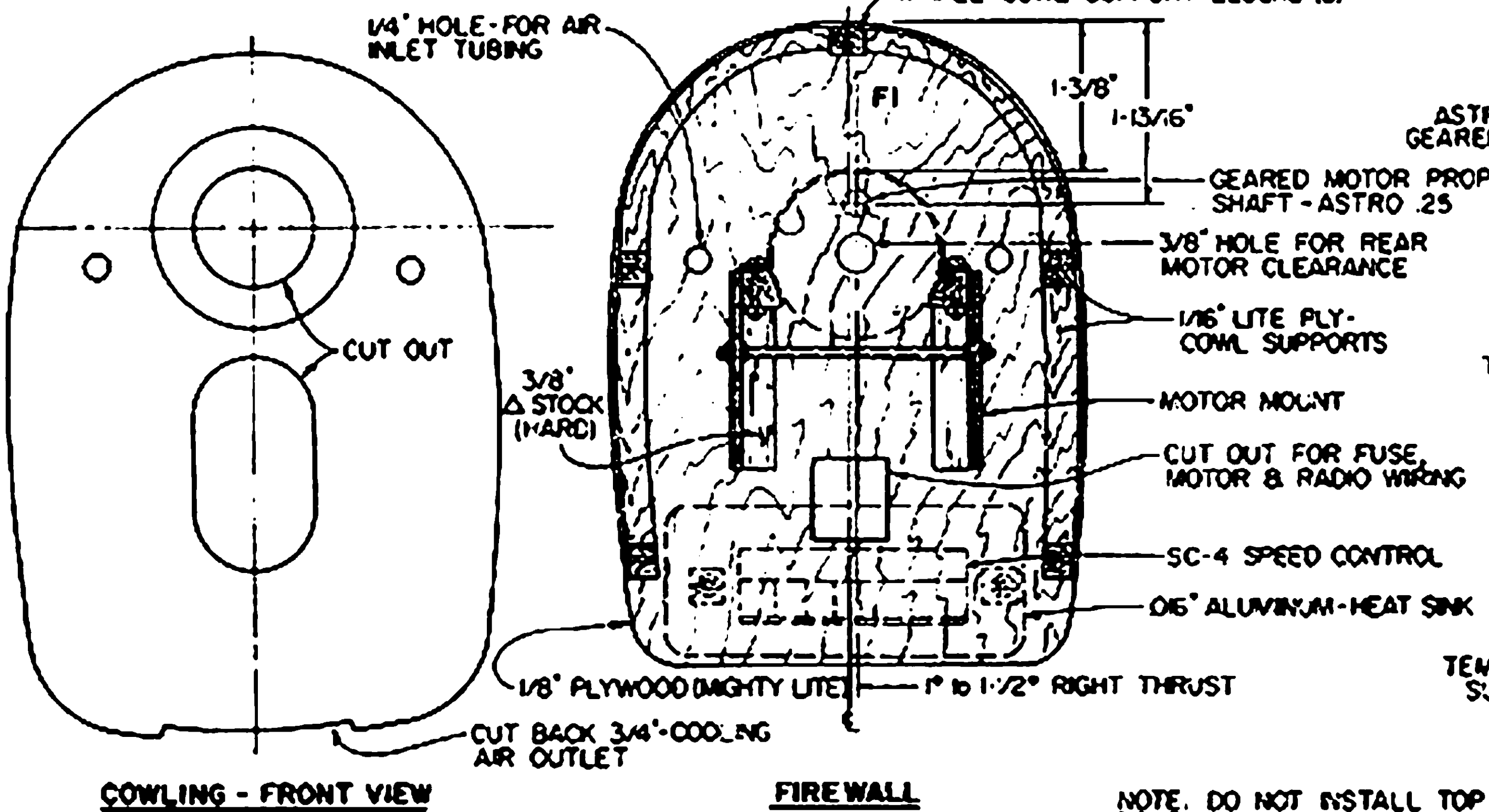
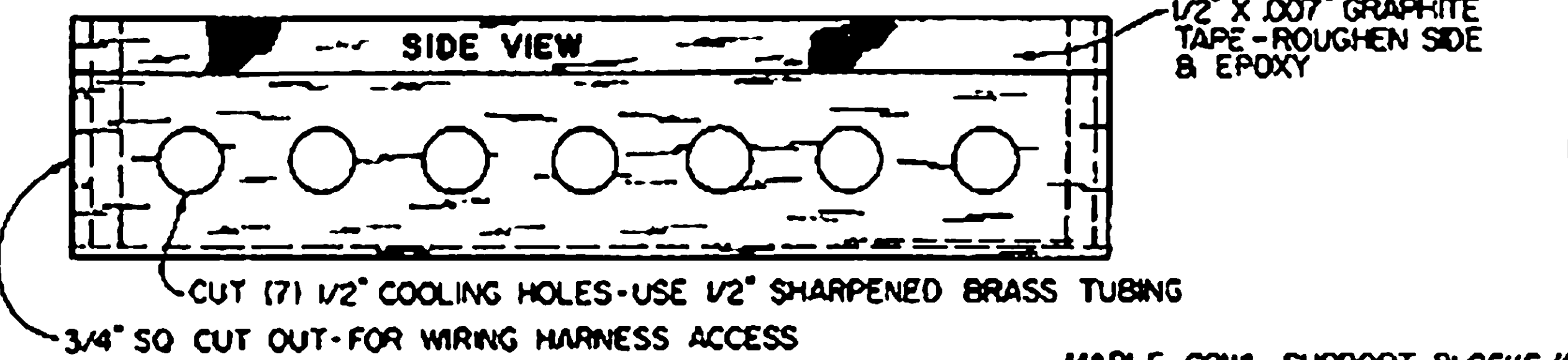
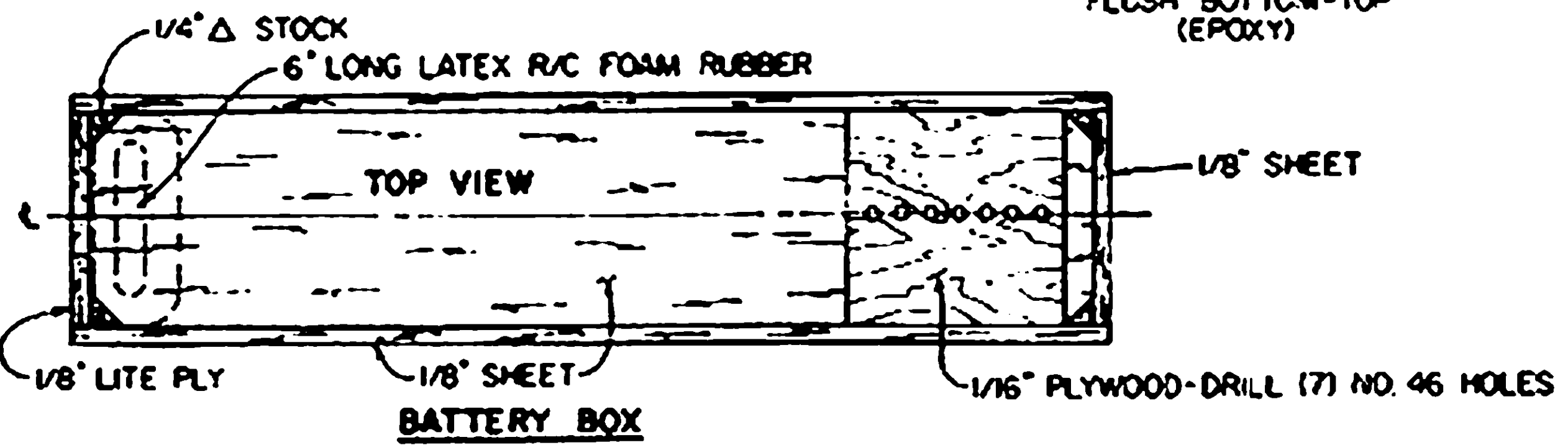
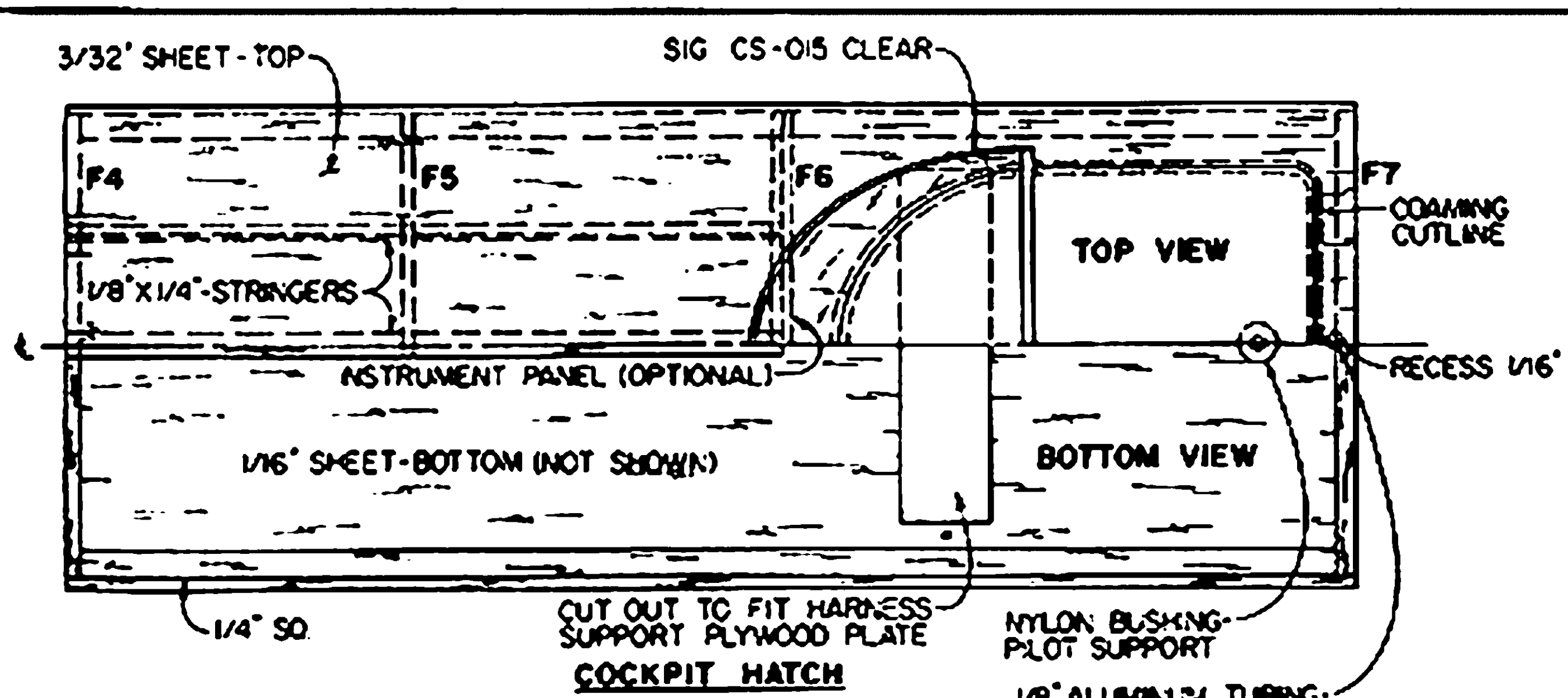
DESIGNED & DRAWN BY SHELDON BURENBAUM

PLANE BY *Bob Smith*

0 1 2 3 4 5 6

SHEET 3 OF 4

PLAN NO. 1085



NOTE: DO NOT INSTALL TOP DECK SHEETING BETWEEN F2 AND F3 UNTIL MOTOR TO BE USED, HAS BEEN MOUNTED AND ALIGNED.

© ALL COMMERCIAL RIGHTS RESERVED

CECE-1

AN ELECTRIC POWERED SPORT DESIGN

DESIGNED & DRAWN BY SHELDOH BIRENBAUM
PLANS BY Bob Waltham

SHEET 4 OF 4

PLAN NO. 1085