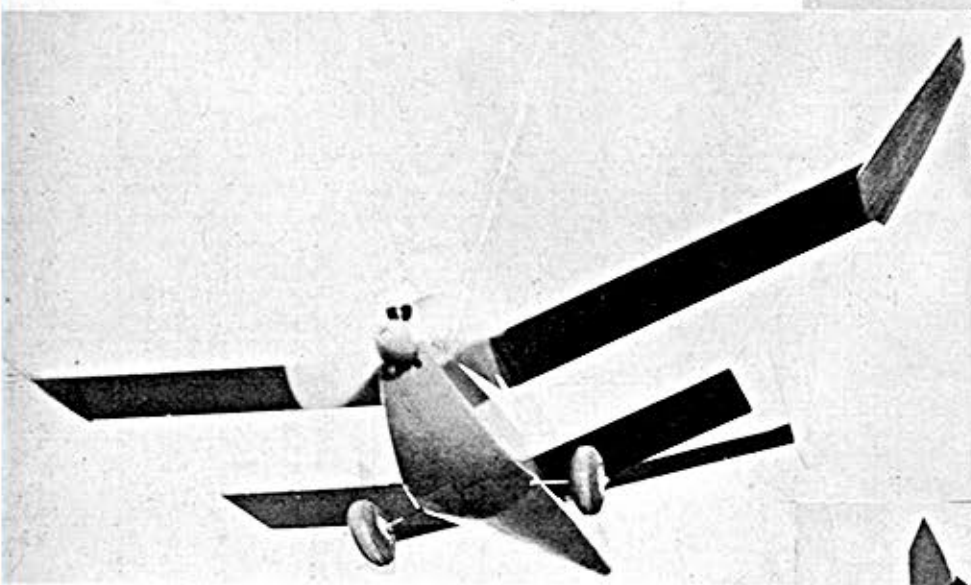


Short, fat and sassy is a good description of our bipe in flight.



Here the little bird is up against stiff competition, it still holds its own in the looks dept.



Steady as a rock under power, the climb not too sharp but quite flat.

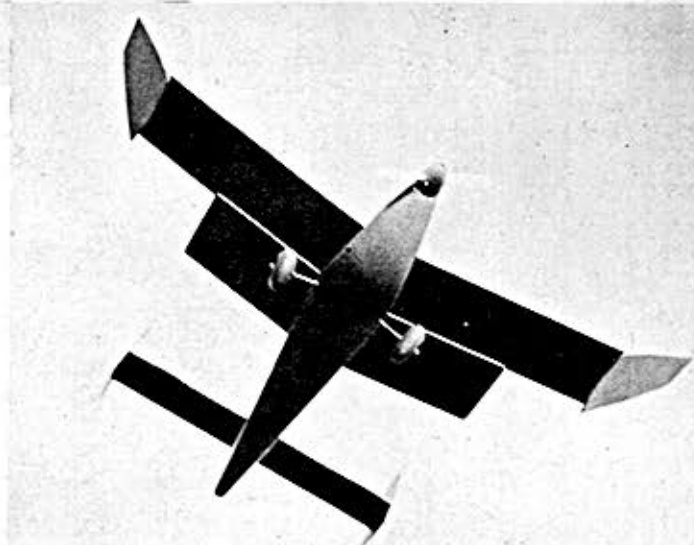
Little Red Twin

by Keith Laumer

► The wind was too much for the rest of the local model fleet, so the sturdy little all-balsa job, sporting an open cockpit and a cherry red paint job, had the field to herself.

Bucking a gusty headwind, the compact little bi-plane bored steadily forward, rocking and pitching but gaining altitude quickly. She battled her way to an altitude of about seventy-five feet, then came around for a bullet-like sprint downwind. Weathervaning as power cut, Little Red Twin held steadily into the wind for an almost stationary approach glide, settling down to the grass light as a feather.

Several flights and a few collisions with stationary objects later, Little Red Twin was still in one piece and rarin' to go. If you'd like to add a small indestructible flier to your stable, you too can make use of those windy afternoons when wings are folding like umbrellas and downwind landings are wiping out calm weather jobs.



Good tight turn in the glide is quite apparent in this gliding shot.

Select two sheets of tough 1/16" sheet balsa; place them edge-to-edge and trace the fuselage side pattern on the wood. Cut out the two pieces thus outlined, then make a duplicate of each. Now join together the two parts of each side panel and sand both panels together to the exact outline.

Cut out part No. 2 (1/16" hard balsa) and part No. 8 (1/8" plywood) and bore (Continued on page 49)