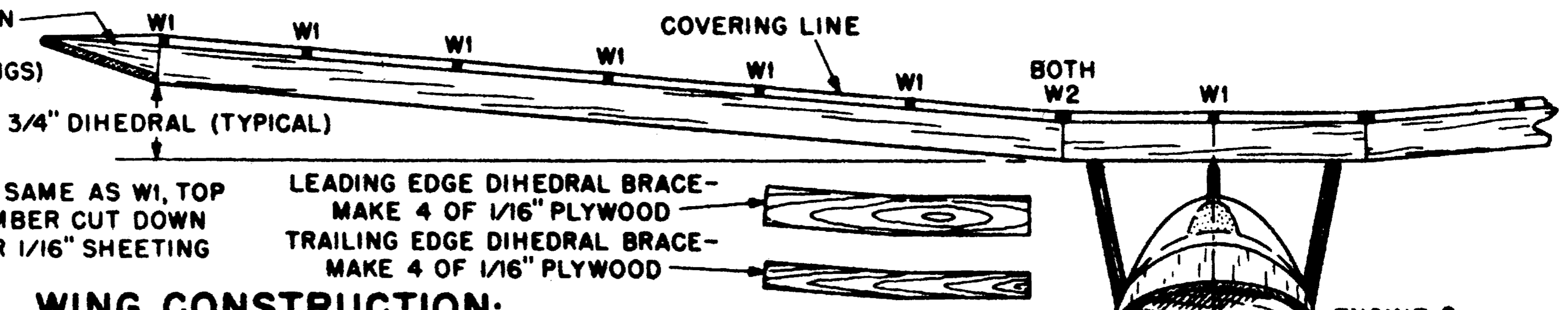


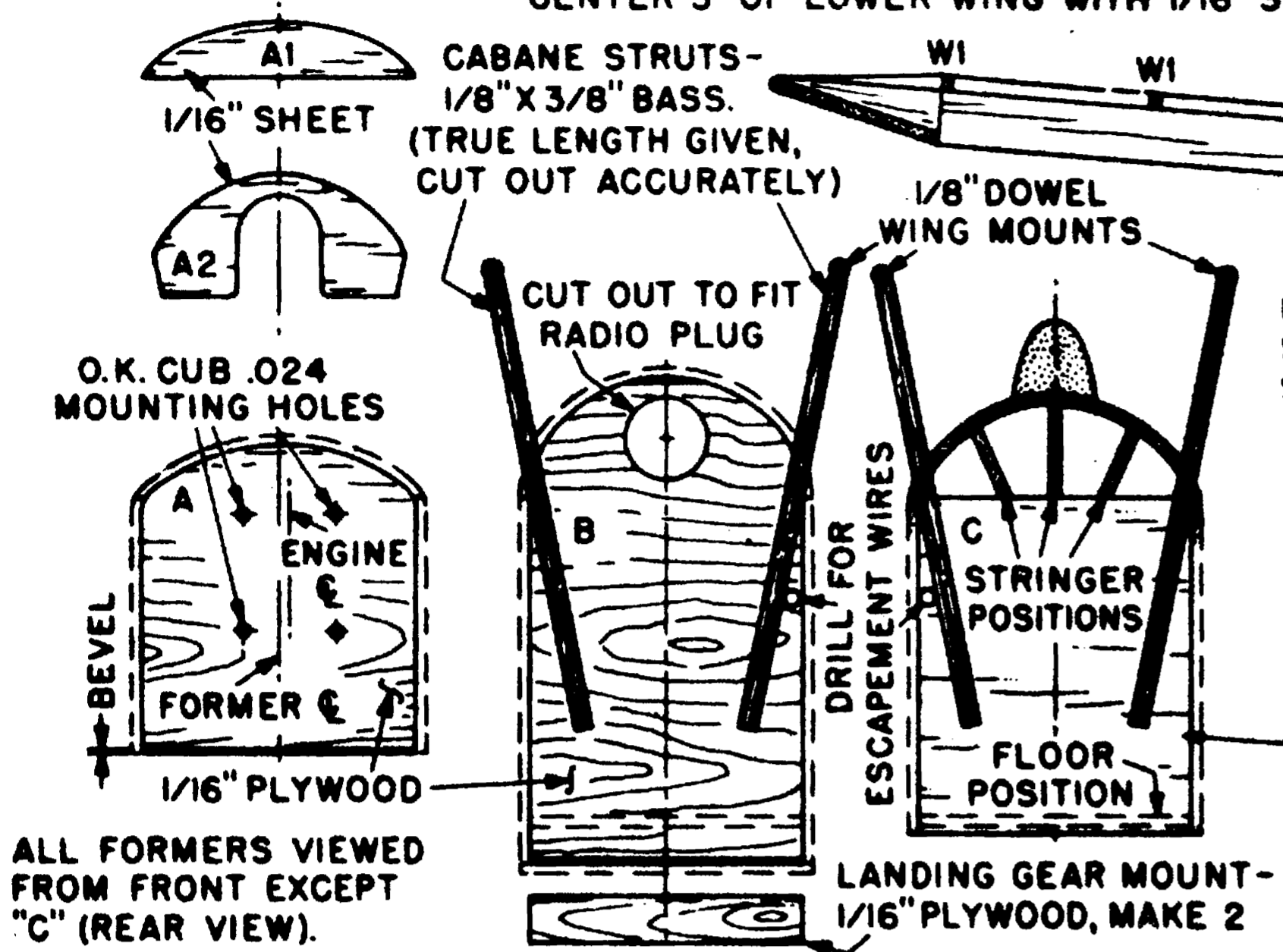
ALL RIBS 1/16" Balsa Sheet
SCRAP FILL-IN CUT TO FIT (BOTH WINGS)

- W1 - MAKE 25
- W4 - MAKE 1
- W2 - MAKE 6
- W3 - MAKE 2



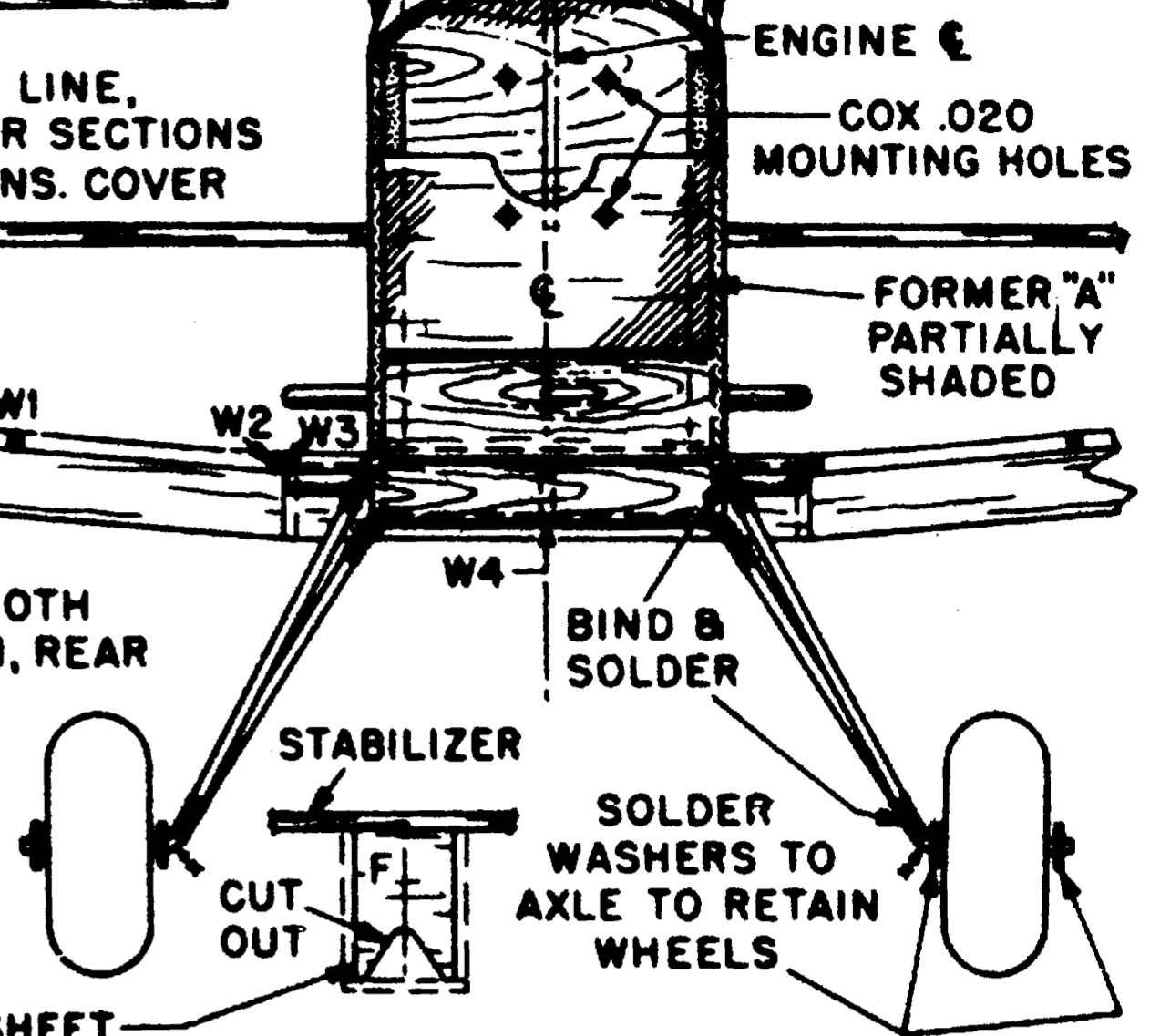
WING CONSTRUCTION:

MAKE 4 PANELS (2 RIGHT HAND & 2 LEFT). LEFT HAND PANEL SHOWN IN SOLID LINE, RIGHT HAND PANEL IS DOTTED. BUILD ON TRUE FLAT SURFACE. MAKE 2 CENTER SECTIONS (WITH DIHEDRAL BRACES INTEGRAL). ATTACH WING PANELS TO CENTER SECTIONS. COVER CENTER 3" OF LOWER WING WITH 1/16" SHEET (TOP SURFACE ONLY).



LANDING GEAR:

USE FRONT STRUT AS PATTERN FOR BOTH STRUTS. BEND FRONT STRUT AS SHOWN, REAR STRUT SIMILAR, BUT CUT SHORT AT "X" POINTS.

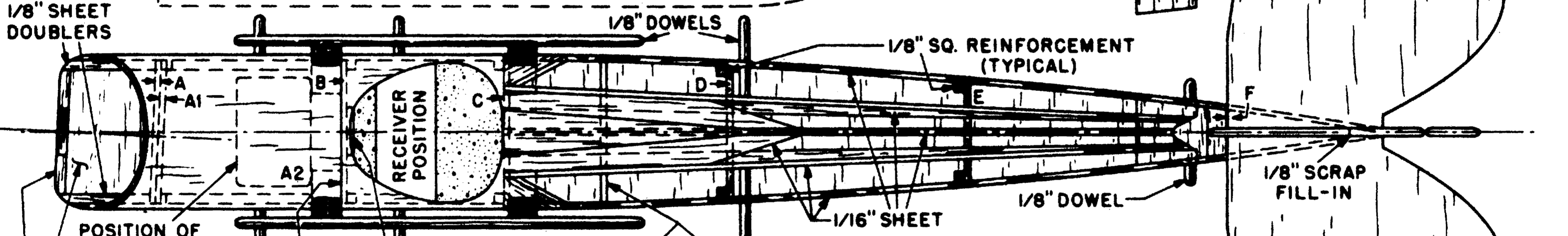
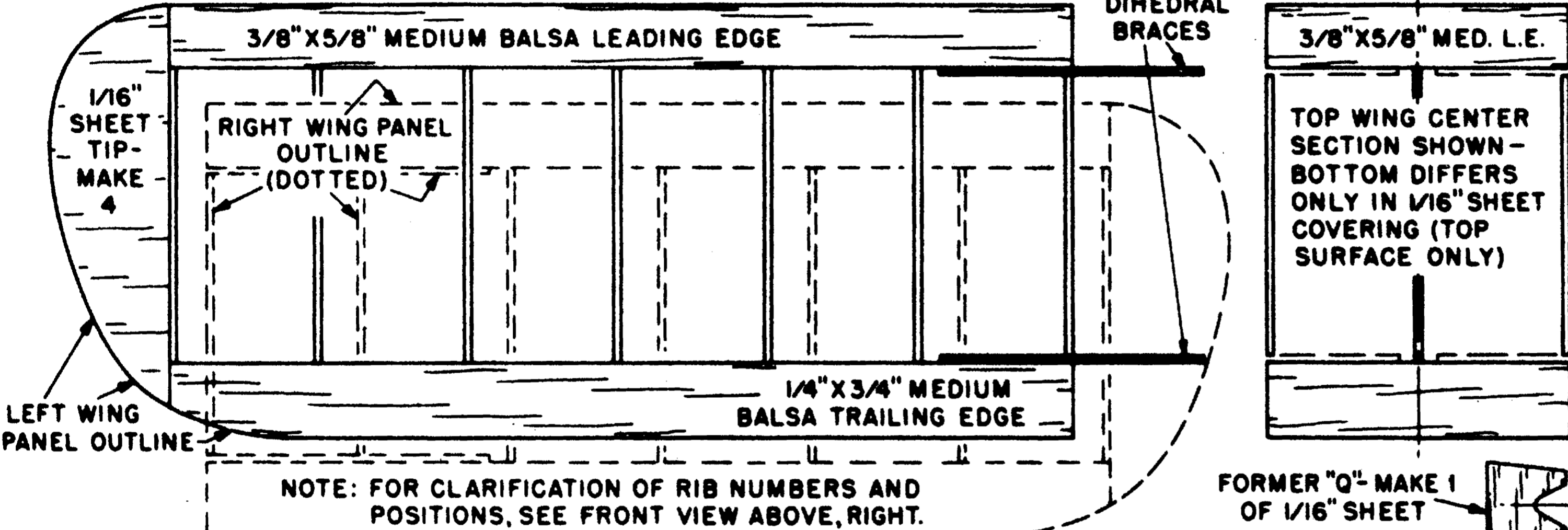


SPECIFICATIONS:

WING SPAN — 23-1/4" (TOP & BOTTOM)
LENGTH OVER ALL — 18-7/8"
WING AREA (TOTAL) — 188 SQ. IN.
TOTAL WEIGHT — 9 TO 12 OUNCES

FLYING:

ADJUST FOR FAST STRAIGHT GLIDE. USE "TOP-FLITE 5-1/4" D., 3" P. NYLON PROP ON EITHER ENGINE. DIFFERENCES IN RADIOS AND BATTERY PACKS WILL ALTER FLYING CHARACTERISTICS, SO TRIM ACCORDINGLY.



COVERING:

ENTIRE MODEL IS COVERED WITH SILK OF DESIRED COLOR(S). MINIMUM OF 4 COATS CLEAR DOPE (COLORED DOPE TO BE USED SPARINGLY, TO KEEP WEIGHT AT A MINIMUM).

POWER:

EITHER A COX .020 OR A CUB .024 (1/4-A CLASS) ENGINE CAN BE EMPLOYED.

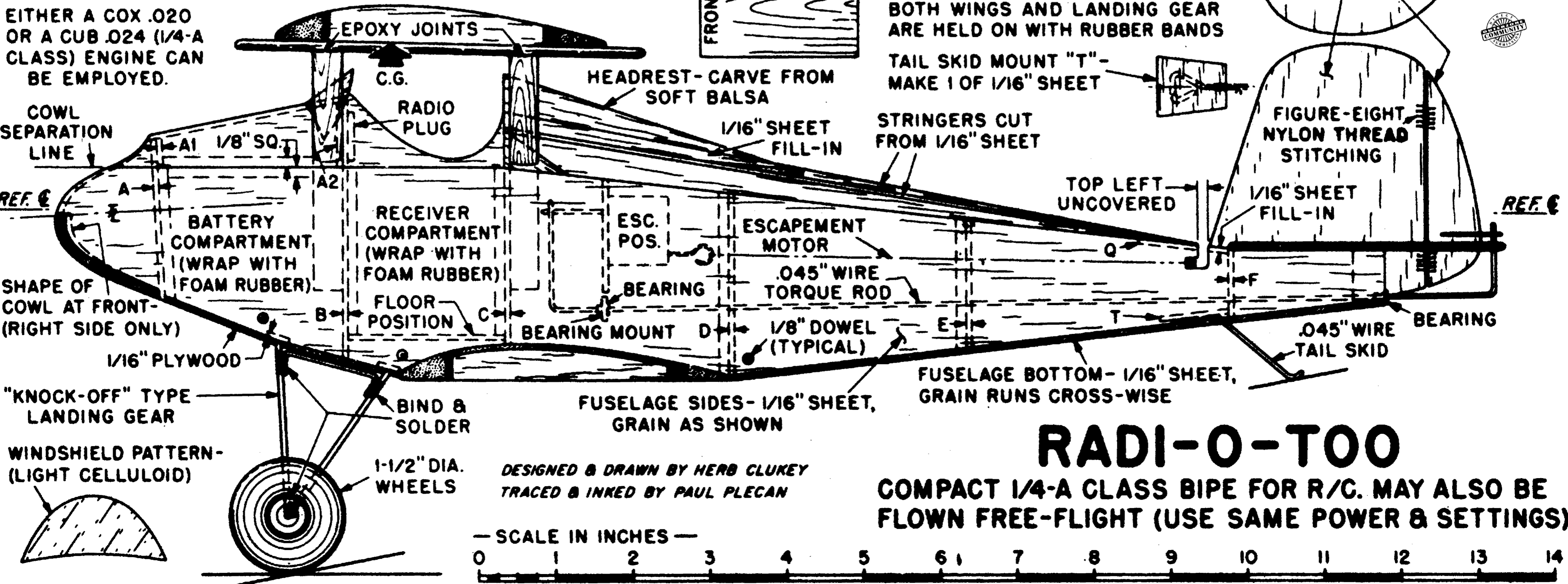
INCIDENCE DATA:

TOP WING - 1.5° (PLUS). BOTTOM WING & STABILIZER - 0° ENGINE - 3° DOWN, 3° RIGHT. INCIDENCES & ENGINE OFFSETS ARE HAD WITH CLOSE ADHERENCE TO PLANS. ADDITIONAL ADJUSTMENTS MADE WITH TOP WING AND/OR THRUST VARIATIONS ONLY.

BOTH WINGS AND LANDING GEAR ARE HELD ON WITH RUBBER BANDS

TAIL SKID MOUNT "T" - MAKE 1 OF 1/16" SHEET

STRINGERS CUT FROM 1/16" SHEET



RADI-O-TOO

COMPACT 1/4-A CLASS BIPE FOR R/C. MAY ALSO BE FLOWN FREE-FLIGHT (USE SAME POWER & SETTINGS)

DESIGNED & DRAWN BY HERB CLUKEY
TRACED & INKED BY PAUL PLECAN

SCALE IN INCHES

