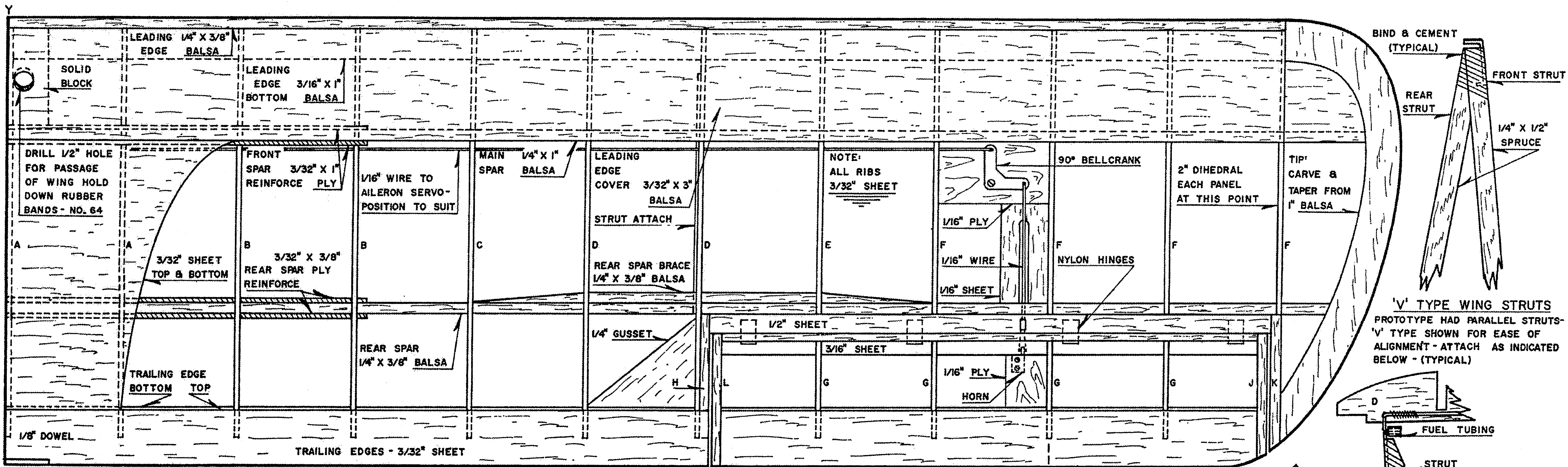
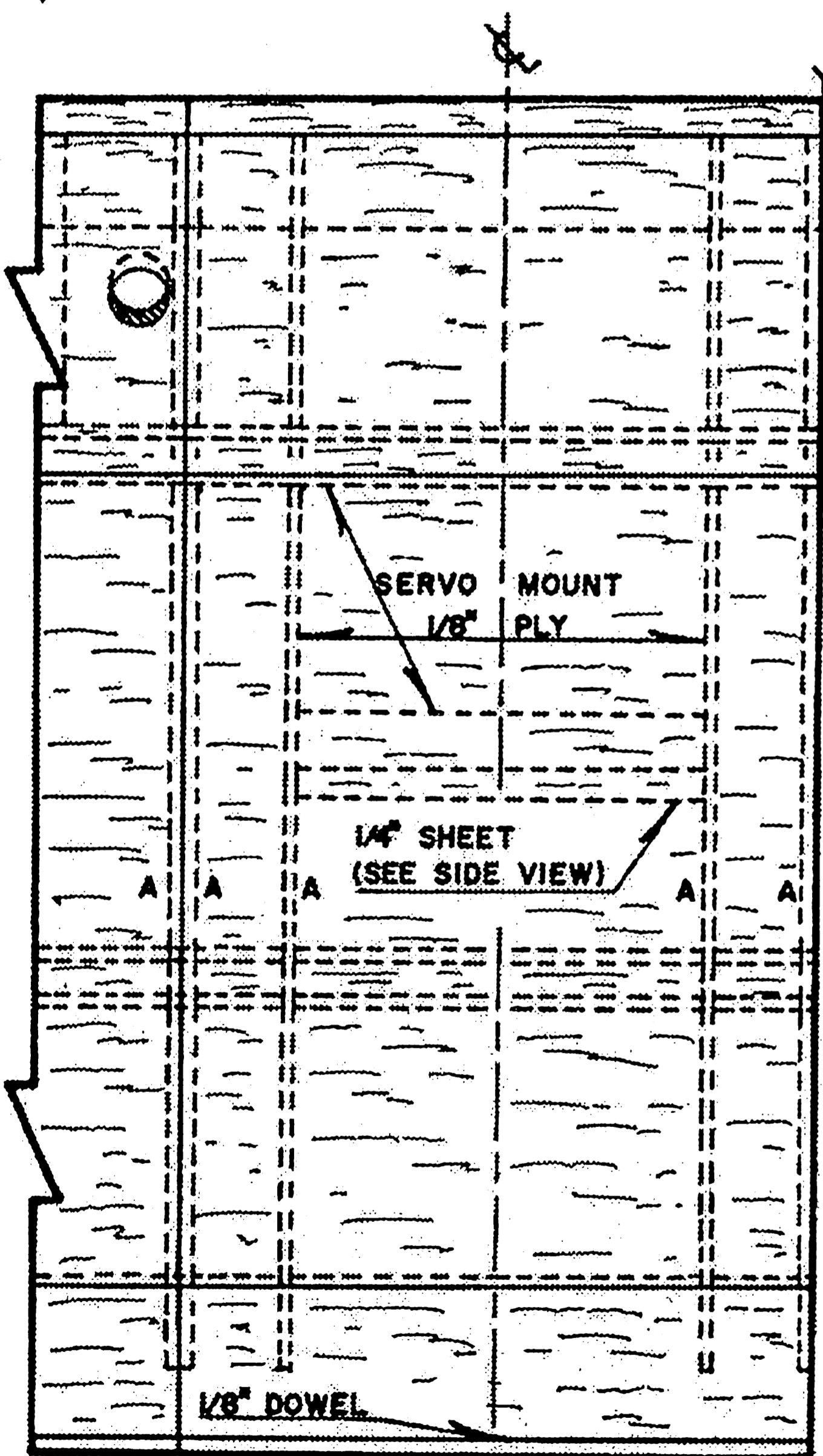


THE 1939  
**PORTERFIELD** MODEL '50'  
 SEMI-SCALE VINTAGE R/C SPORT  
 TRAINER FOR PROPO OR MULTI  
 DESIGNED DRAWN & INKED BY  
 HERB CLUKEY FOR  
**AMERICAN MODELER**  
 (PLATE 1 OF 2)



'V' TYPE WING STRUTS  
 PROTOTYPE HAD PARALLEL STRUTS - 'V' TYPE SHOWN FOR EASE OF ALIGNMENT - ATTACH AS INDICATED BELOW - (TYPICAL)

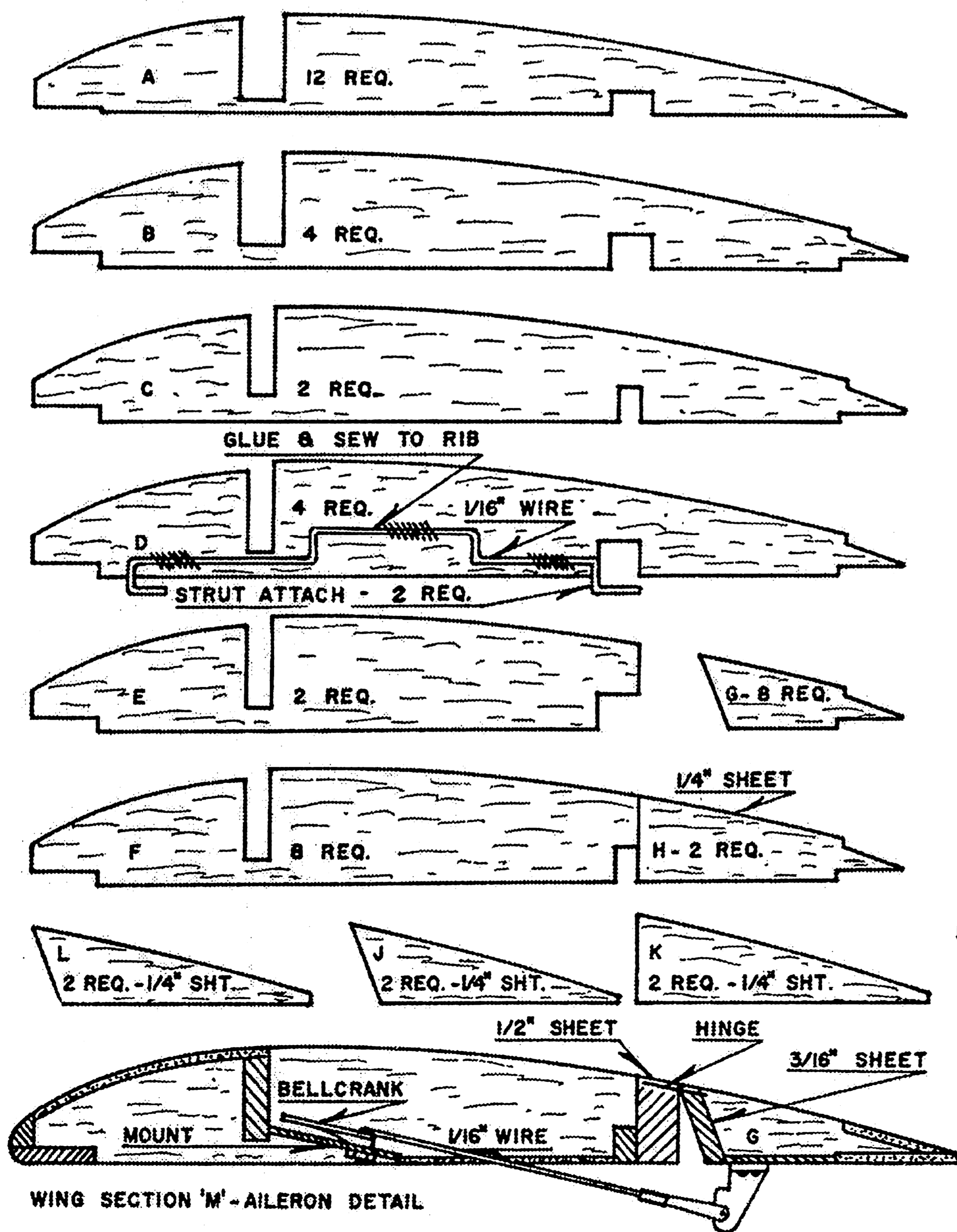
NOTE: REVERSE PLAN TO OBTAIN LEFT WING PANEL



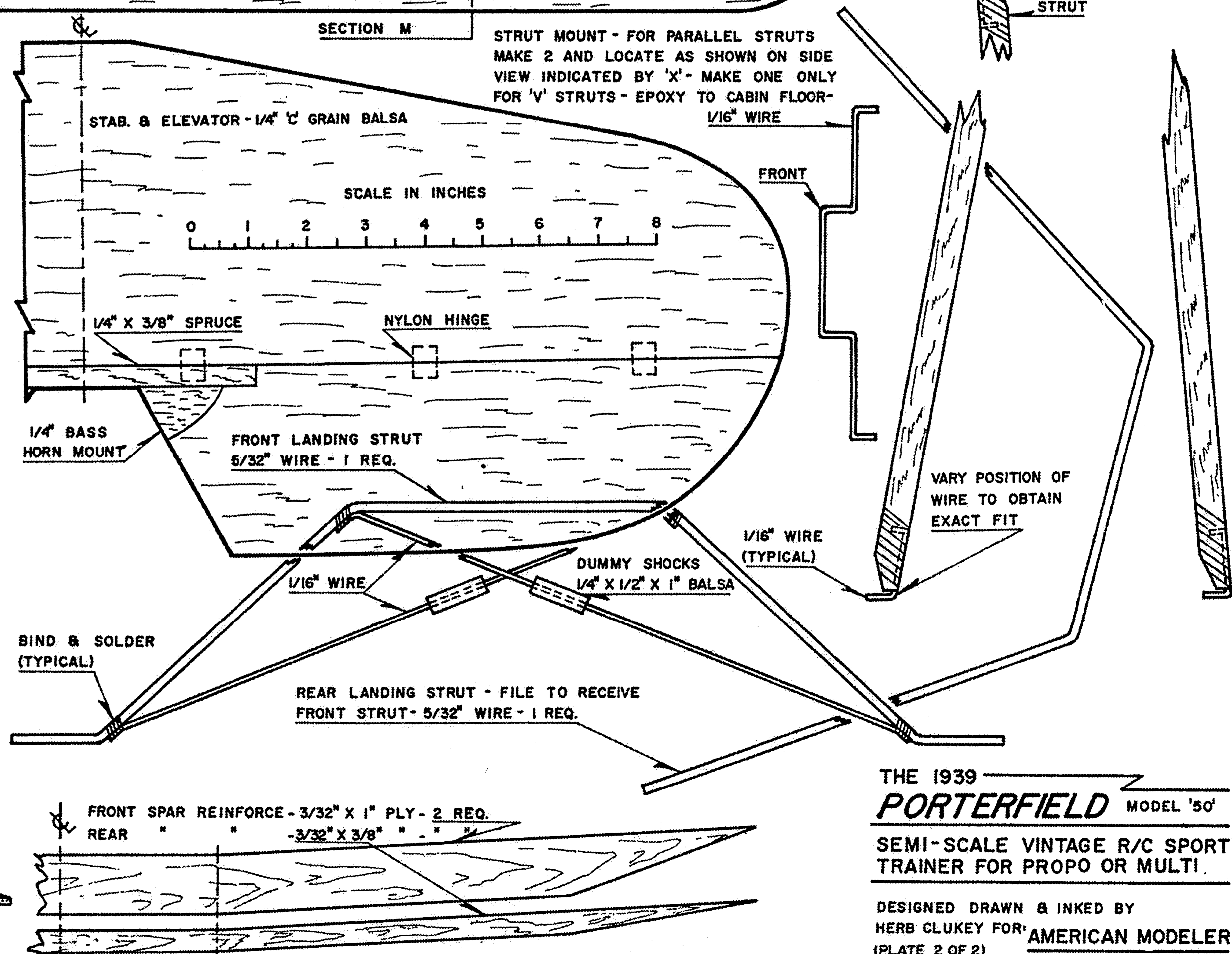
WING CENTER SECTION

JOIN 'Y' TO MAIN WING PANEL

NOTE: ALL MAIN WING NOMENCLATURE APPLIES TO CENTER SECTION -



WING SECTION 'M' - AILERON DETAIL



STRUT MOUNT - FOR PARALLEL STRUTS MAKE 2 AND LOCATE AS SHOWN ON SIDE VIEW INDICATED BY 'X' - MAKE ONE ONLY FOR 'V' STRUTS - EPOXY TO CABIN FLOOR -  $1/16"$  WIRE

THE 1939  
**PORTERFIELD** MODEL '50'  
 SEMI-SCALE VINTAGE R/C SPORT TRAINER FOR PROPO OR MULTI!  
 DESIGNED DRAWN & INKED BY  
 HERB CLUKEY FOR AMERICAN MODELER  
 (PLATE 2 OF 2)