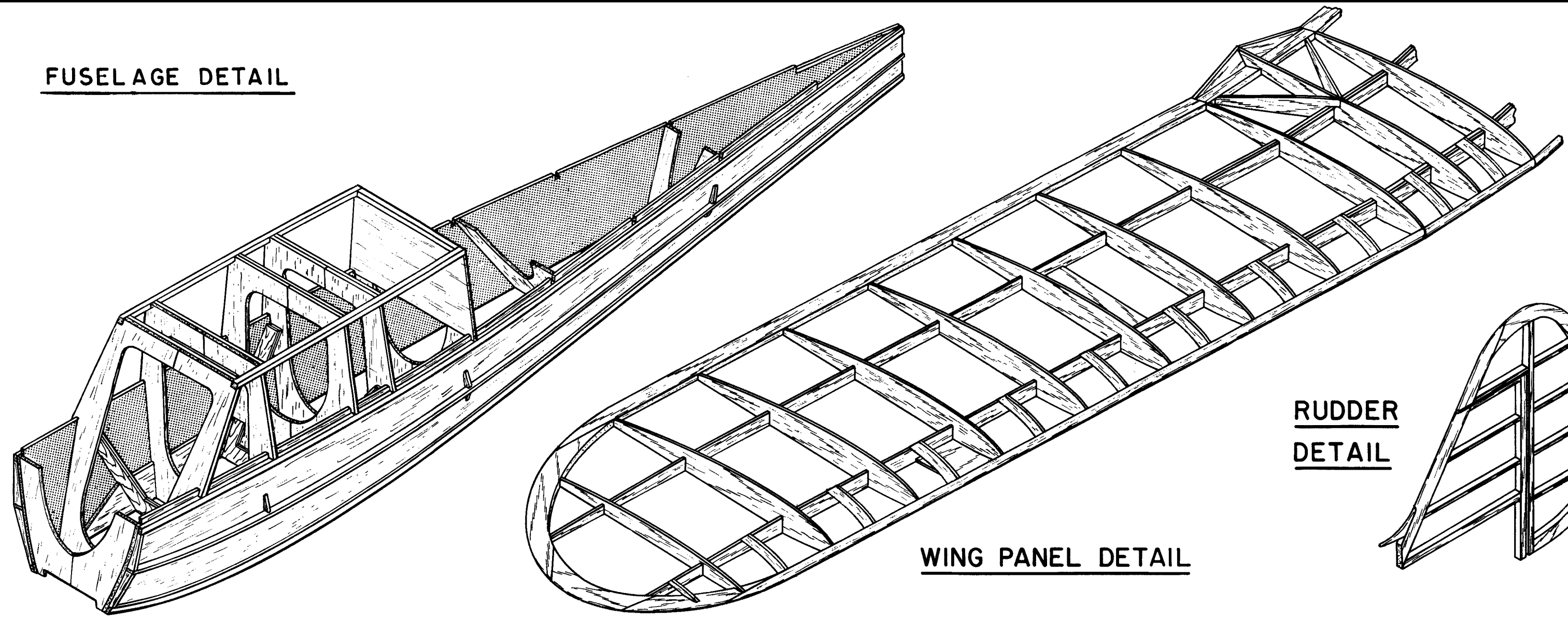
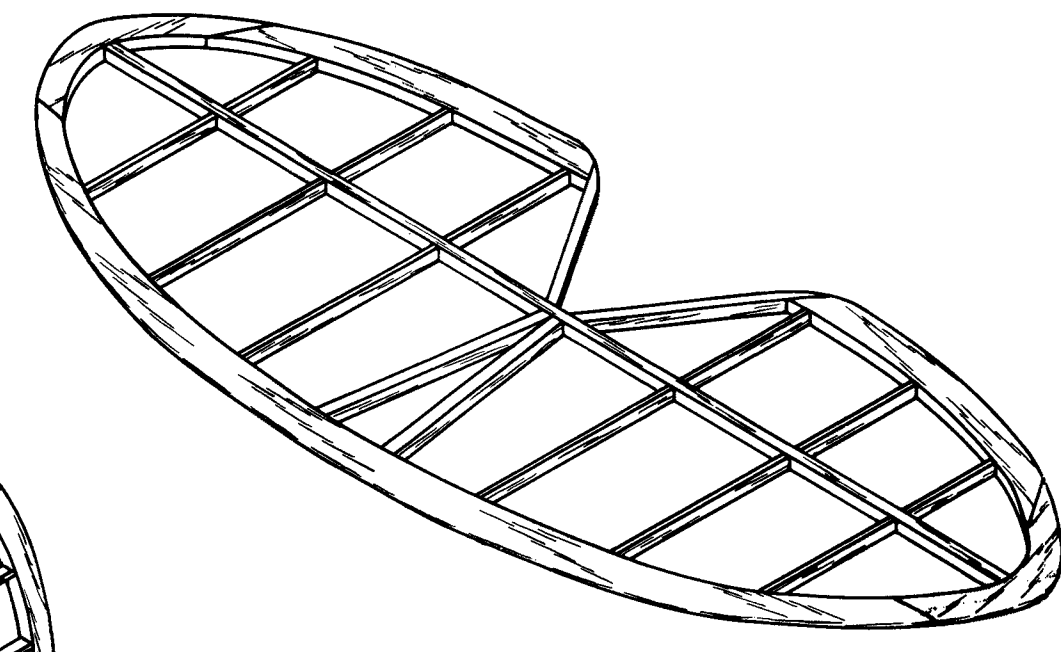


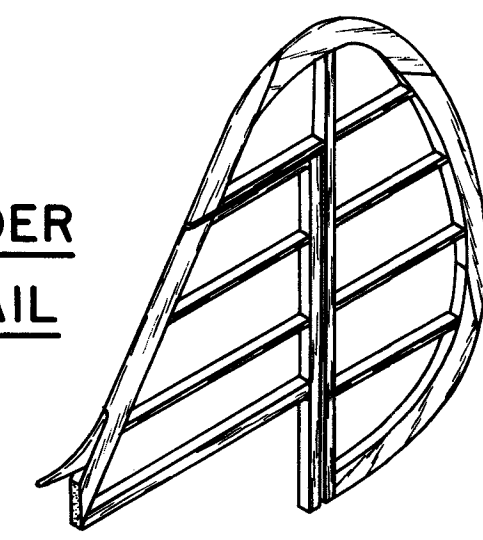
FUSELAGE DETAIL



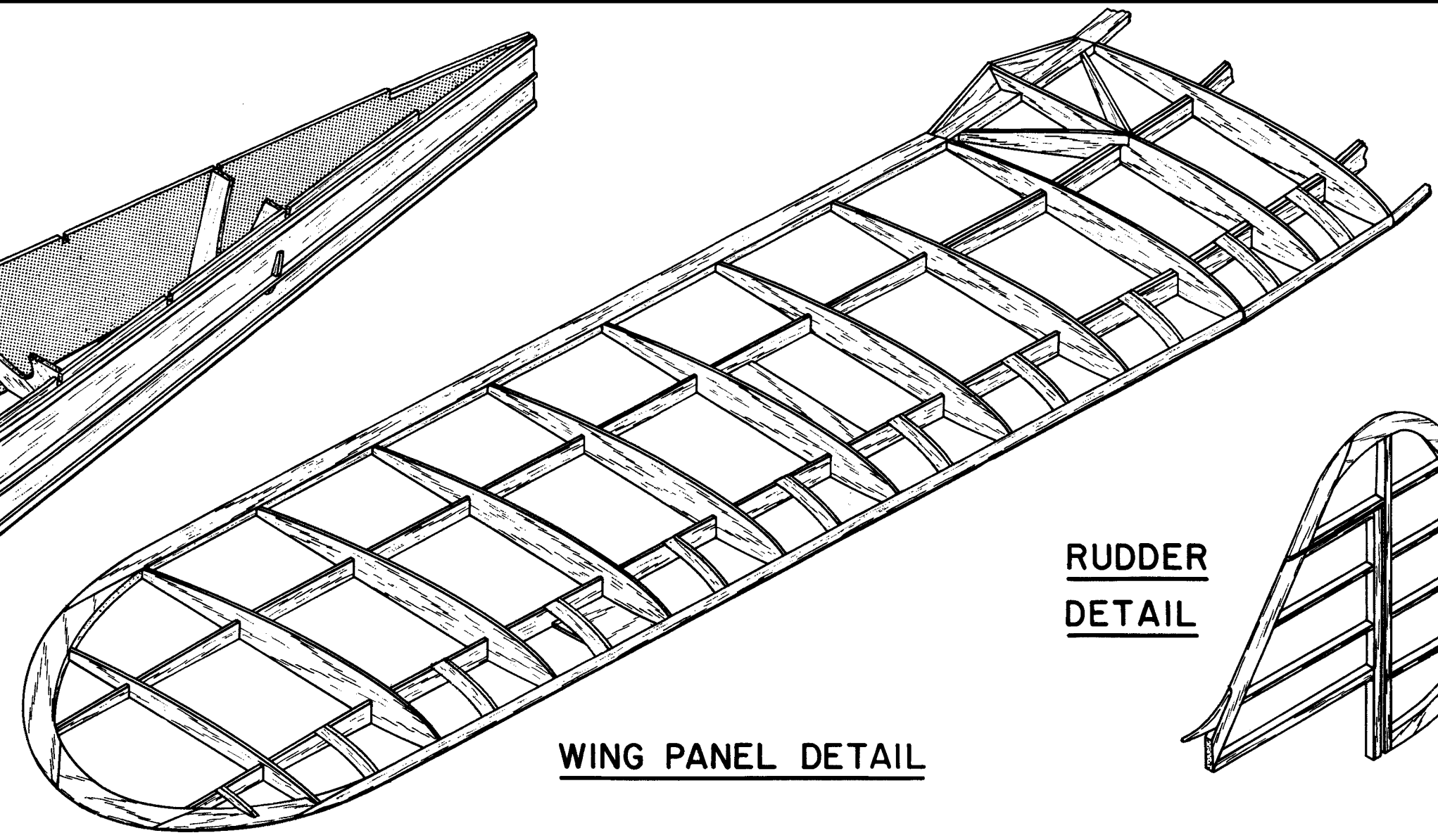
STABILIZER DETAIL



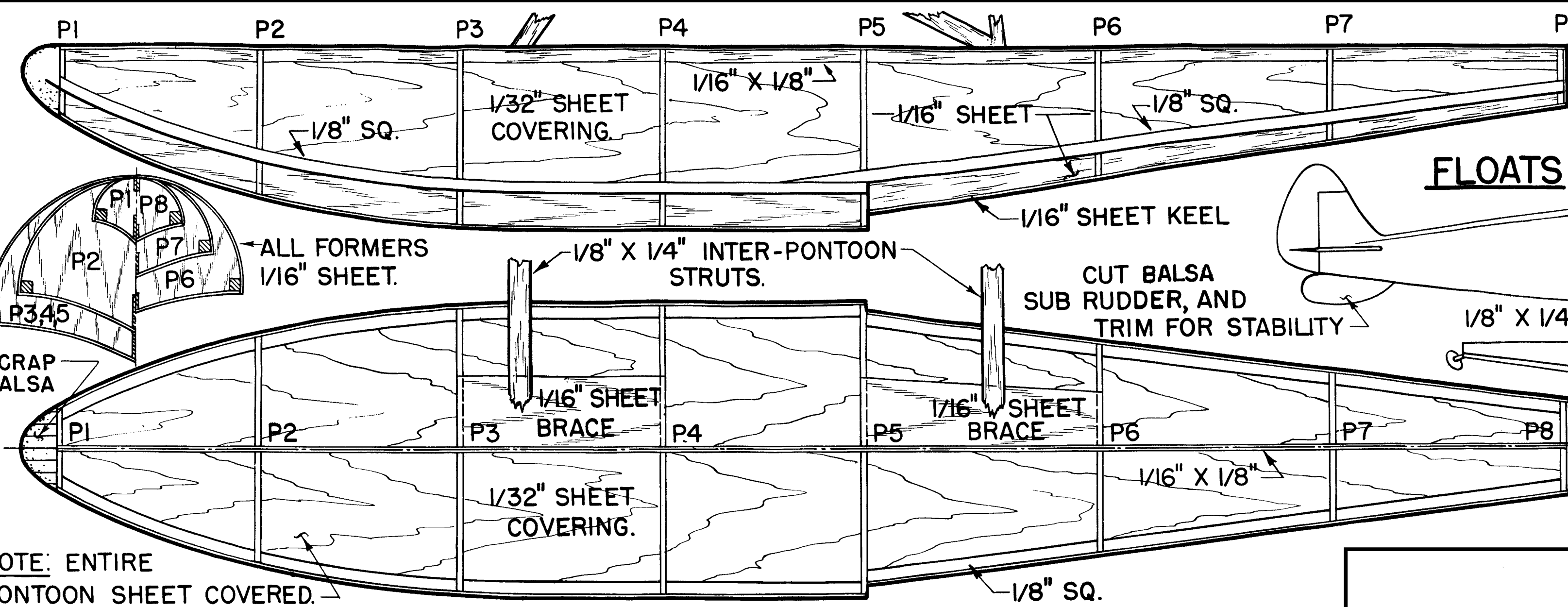
RUDDER DETAIL



WING PANEL DETAIL



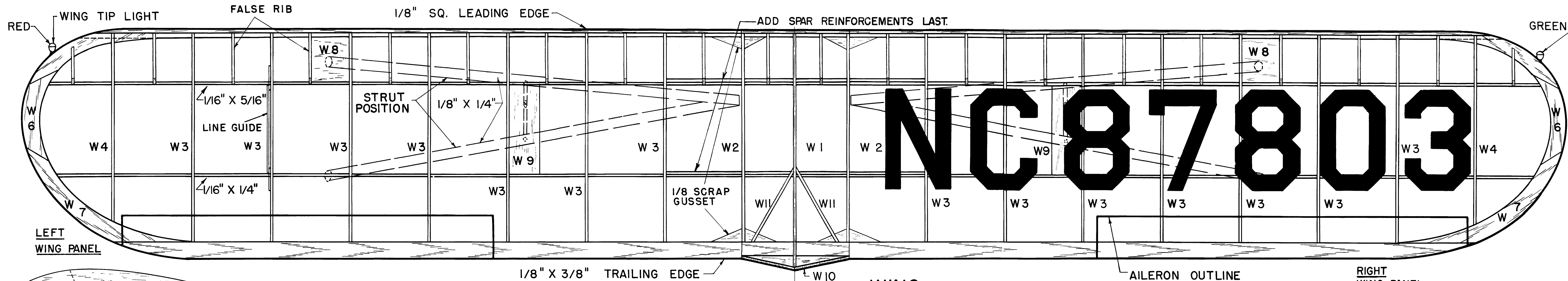
ISOMETRIC CONSTRUCTION DRAWINGS



FLOATS

NOTE: PONTOONS SET 7-5/16" APART, KEEL TO KEEL.

NOTE: AFTER SANDING, DOPE PONTOONS WELL, THEN COVER WITH SILKSPAN AND RE-DOPE.

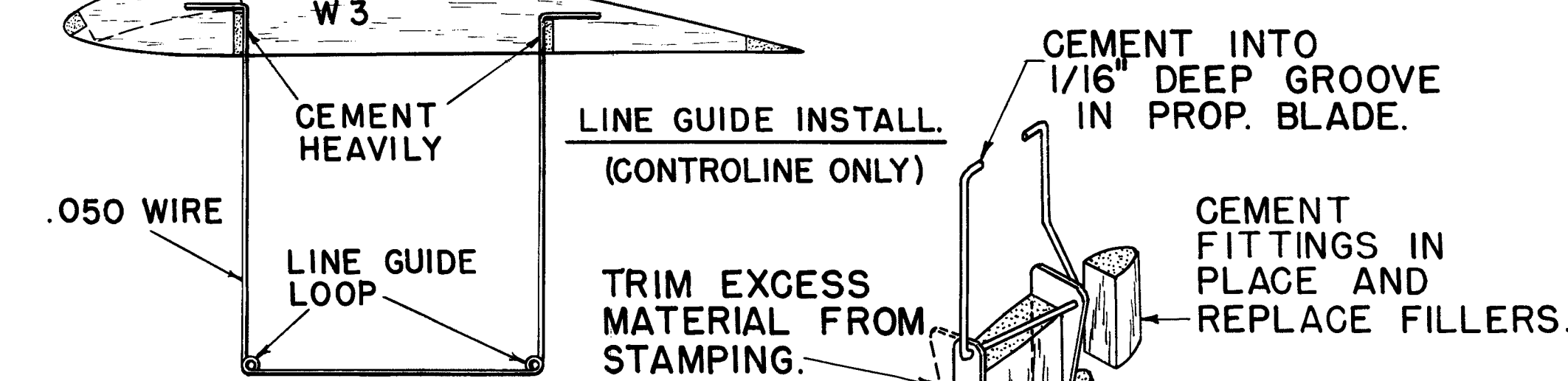


WING

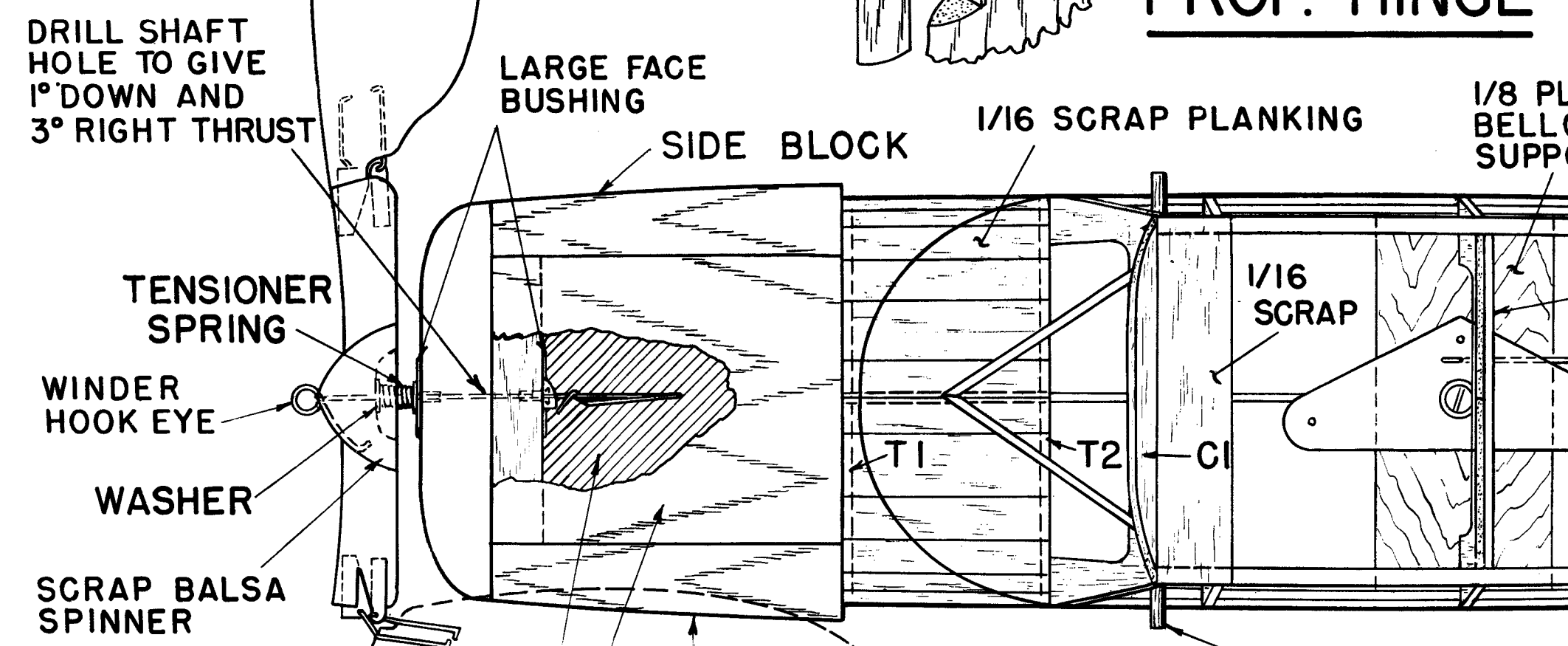
DECAL NUMERALS ON UPPER RIGHT & LOWER LEFT PANEL.

AILERON OUTLINE

RIGHT WING PANEL

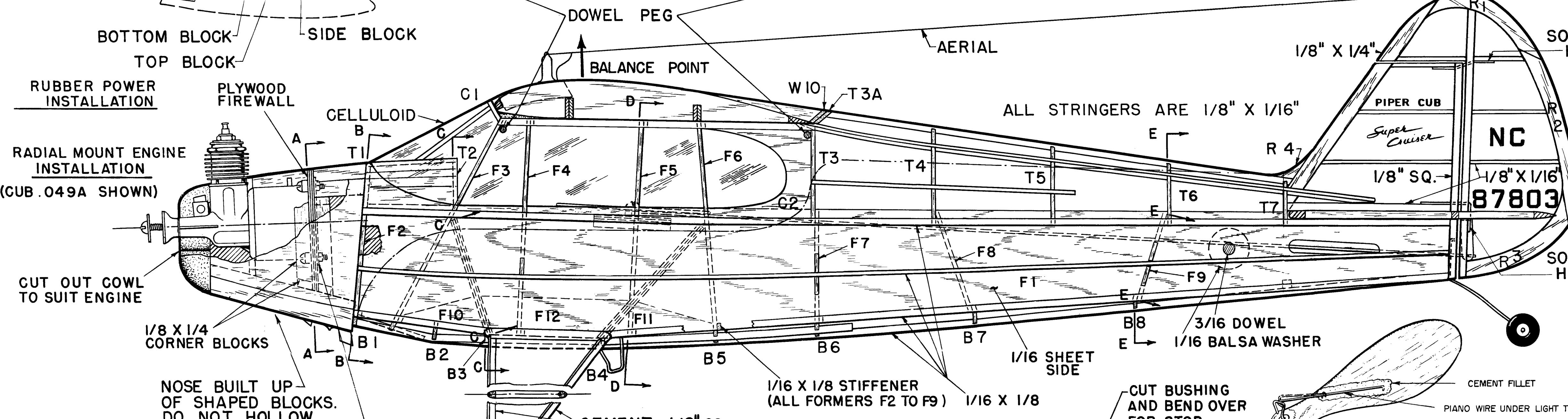


PROP. HINGE



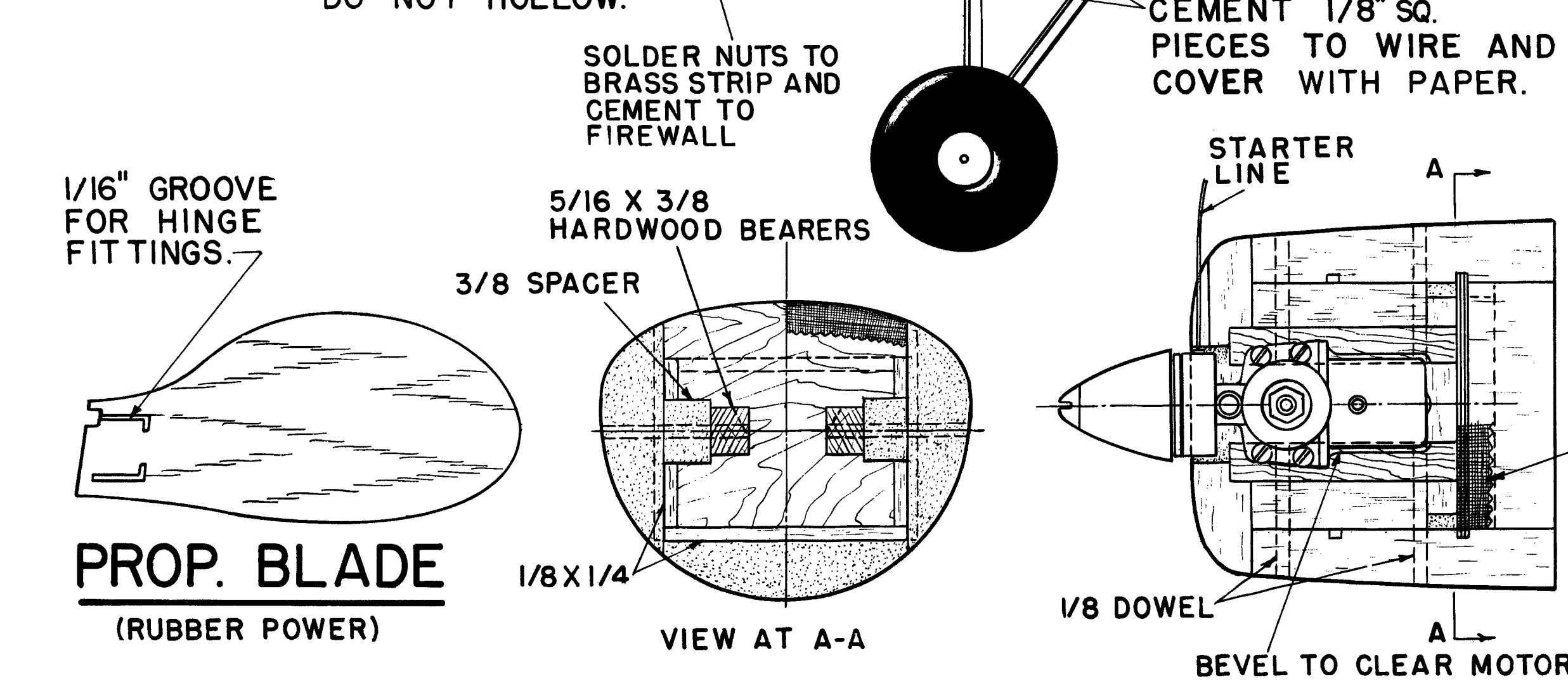
FUSELAGE

TOP VIEW



FUSELAGE

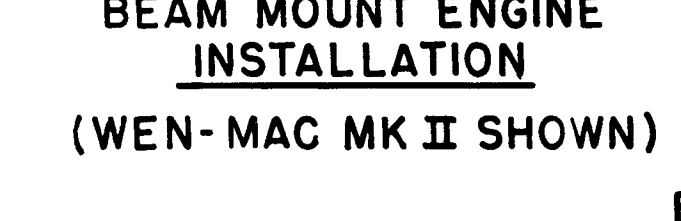
SIDE VIEW



NOSE PLUG (RUBBER POWER)

1. BOLT MOTOR ON BEARERS
2. BLOCK UNIT IN PLACE WITH SCRAP Balsa
3. FUEL PROOF THOROUGHLY

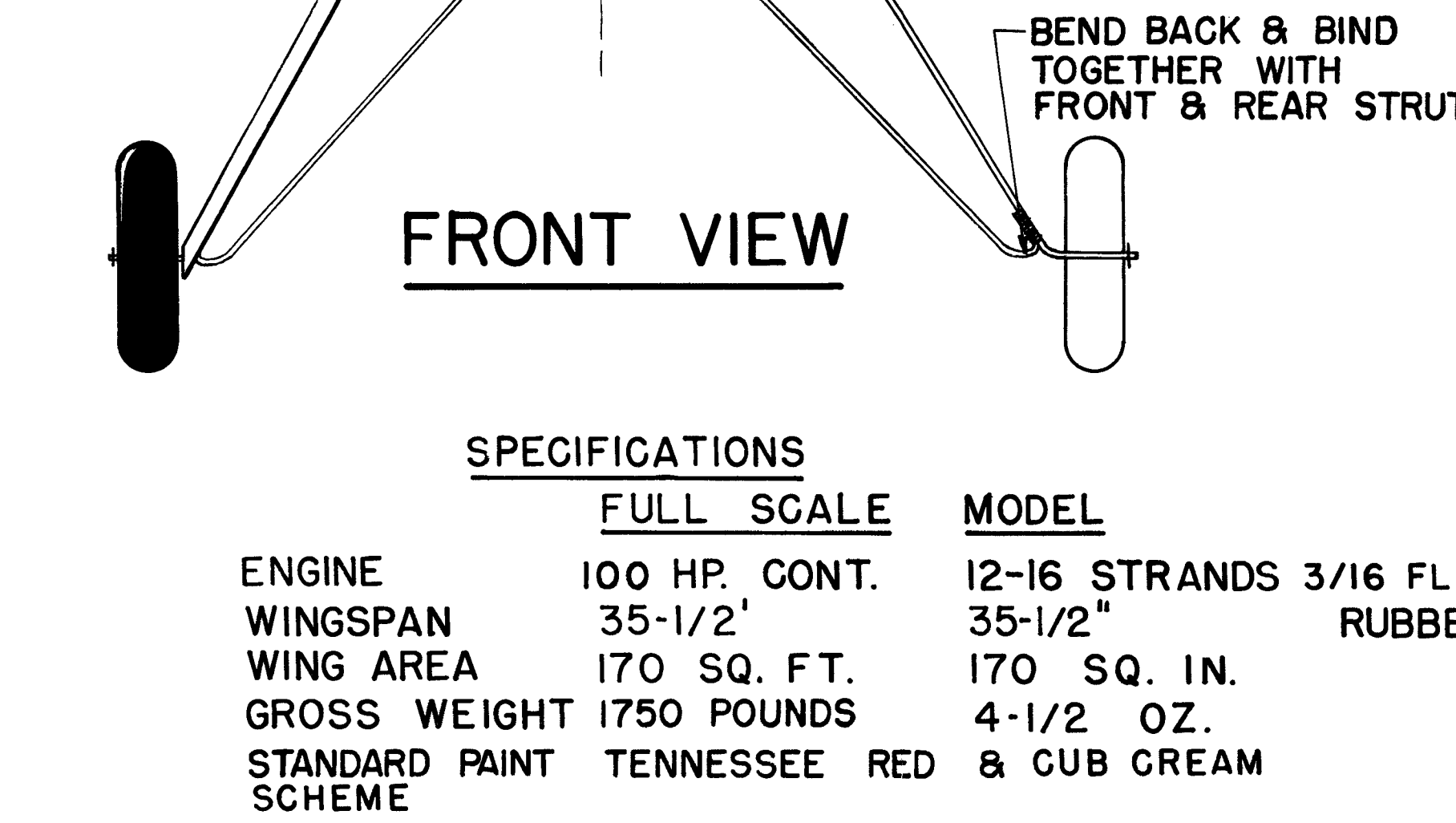
BEAM MOUNT ENGINE INSTALLATION (WEN-MAC MK II SHOWN)



ATTACH WING BY USING RUBBER BANDS OVER DOWEL PEGS.

DO NOT CEMENT STRUTS TO FUSELAGE. THEY ARE REMOVABLE WITH WINGS.

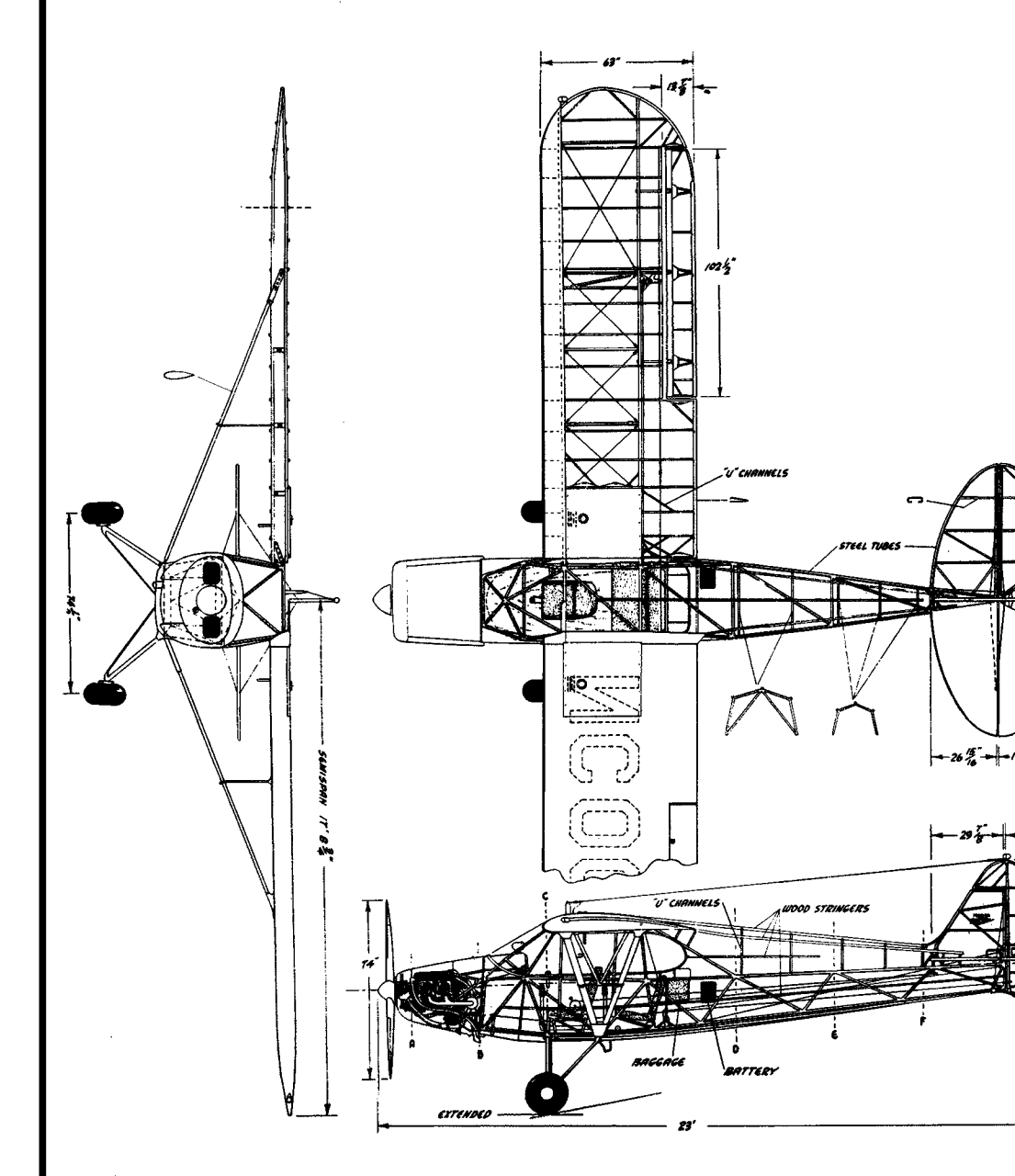
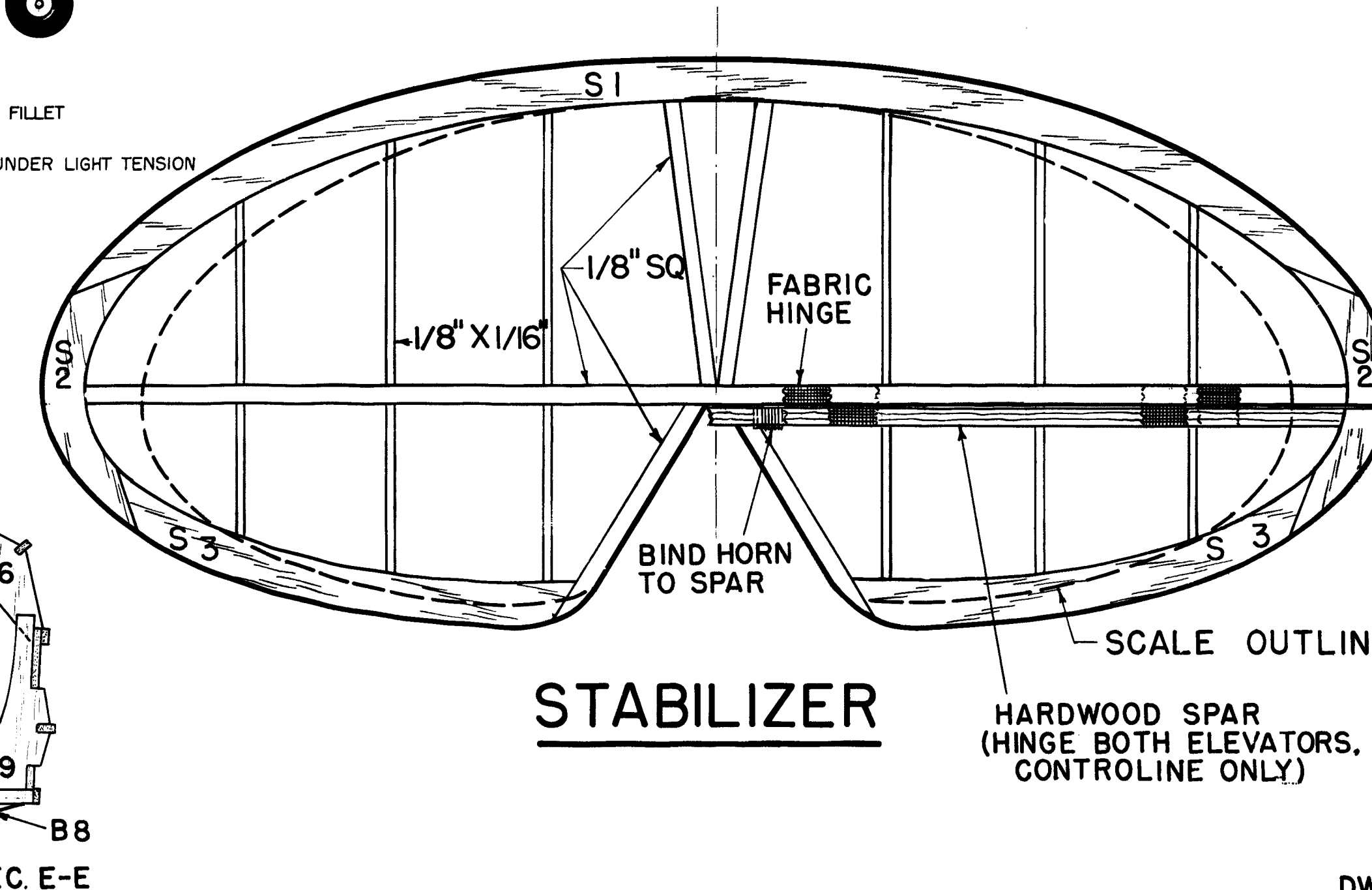
FRONT VIEW



SPECIFICATIONS

	FULL SCALE	MODEL
ENGINE	100 HP. CONT.	12-16 STRANDS 3/16 FLAT RUBBER
WINGSPAN	35-1/2"	35-1/2"
WING AREA	170 SQ. FT.	170 SQ. IN.
GROSS WEIGHT	1750 POUNDS	4-1/2 OZ.
STANDARD PAINT SCHEME	TENNESSEE RED & CUB CREAM	

STABILIZER



OFFICIAL FACTORY 3-VIEW DRAWING

INSTRUCTIONS

FOR BUILDING AND FLYING

General instructions for building and flying the model, including material requirements and assembly steps.

Additional instructions for the propeller and engine installation.

Instructions for the landing gear and fuselage assembly.

Instructions for the wing and stabilizer assembly.

Instructions for the nose plug and engine installation.

Instructions for the fuselage and landing gear assembly.

Instructions for the stabilizer and wing assembly.

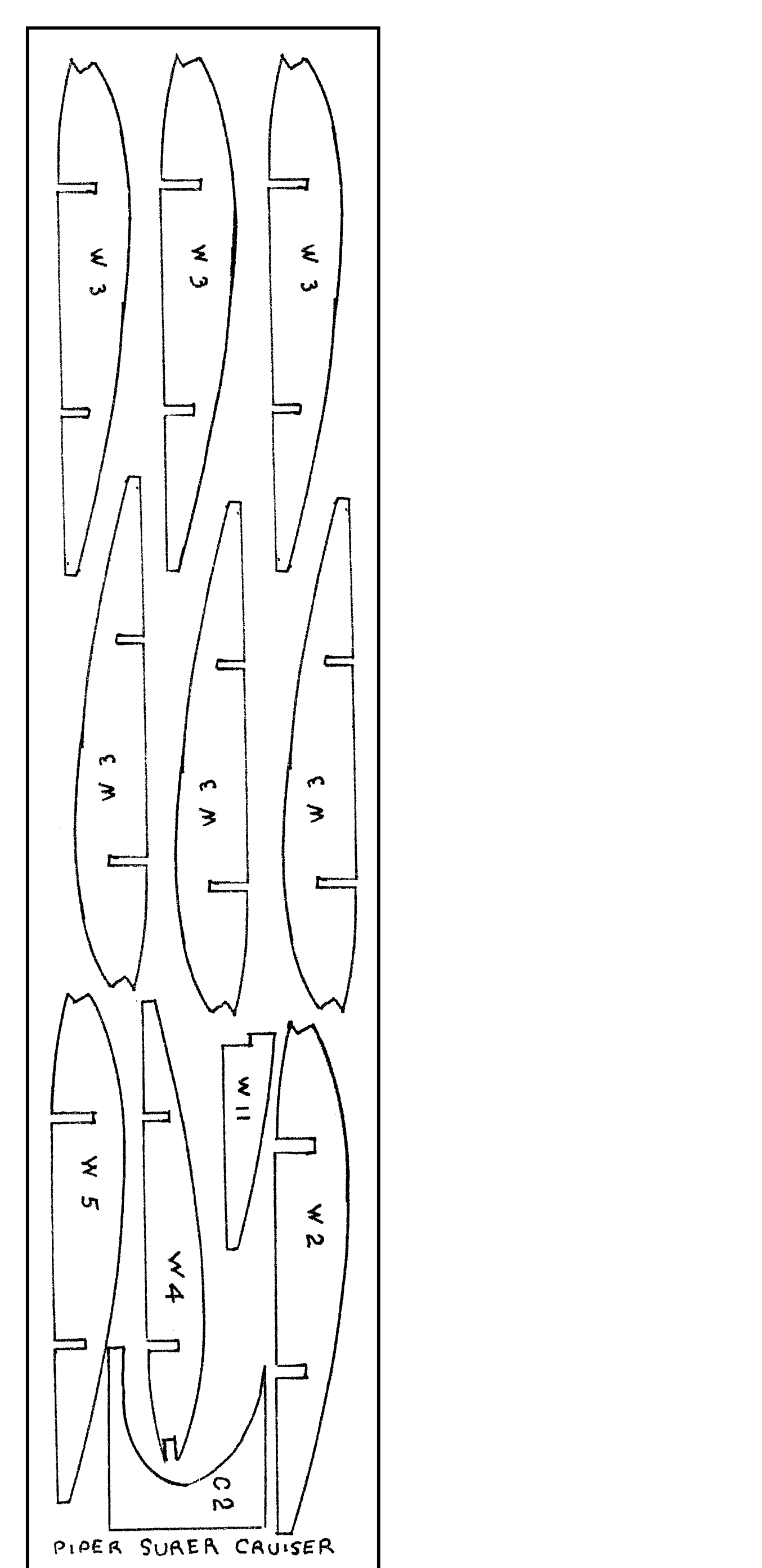
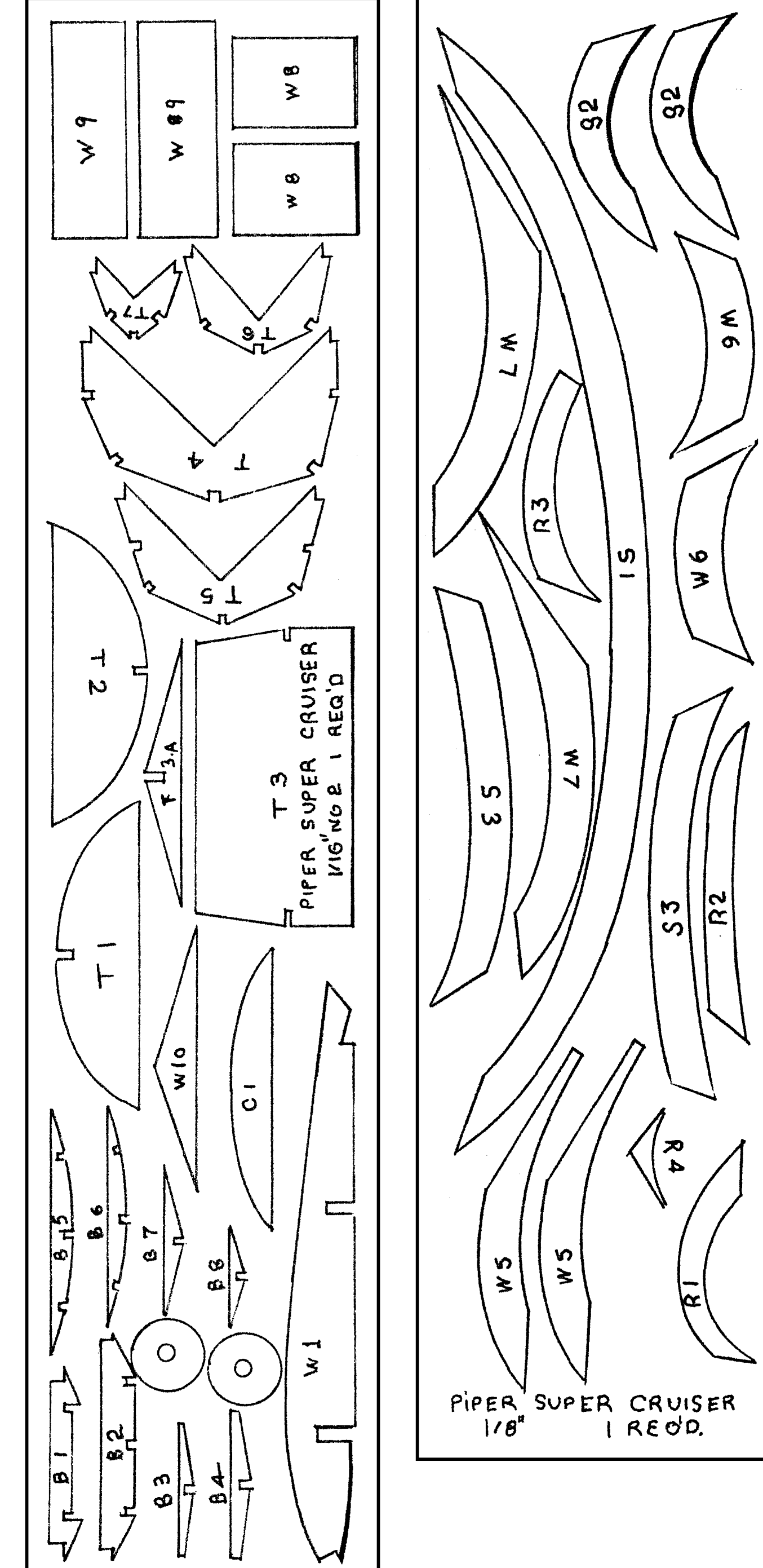
Instructions for the nose plug and engine installation.

Instructions for the fuselage and landing gear assembly.

Instructions for the stabilizer and wing assembly.

Instructions for the nose plug and engine installation.

Instructions for the fuselage and landing gear assembly.



PIPER SUPER CRUISER

FLYING SCALE SCALE: 1"-1'

SPAN - 35-1/2" WGT. - 4-1/2 OZ.

KIT ENGINEERED BY BILL EFFINGER

COPYRIGHT 1955 REPRODUCTION FOR RESALE FORBIDDEN

BERKELEY MODELS INC., WEST HEMPSTEAD, NEW YORK, U.S.A.