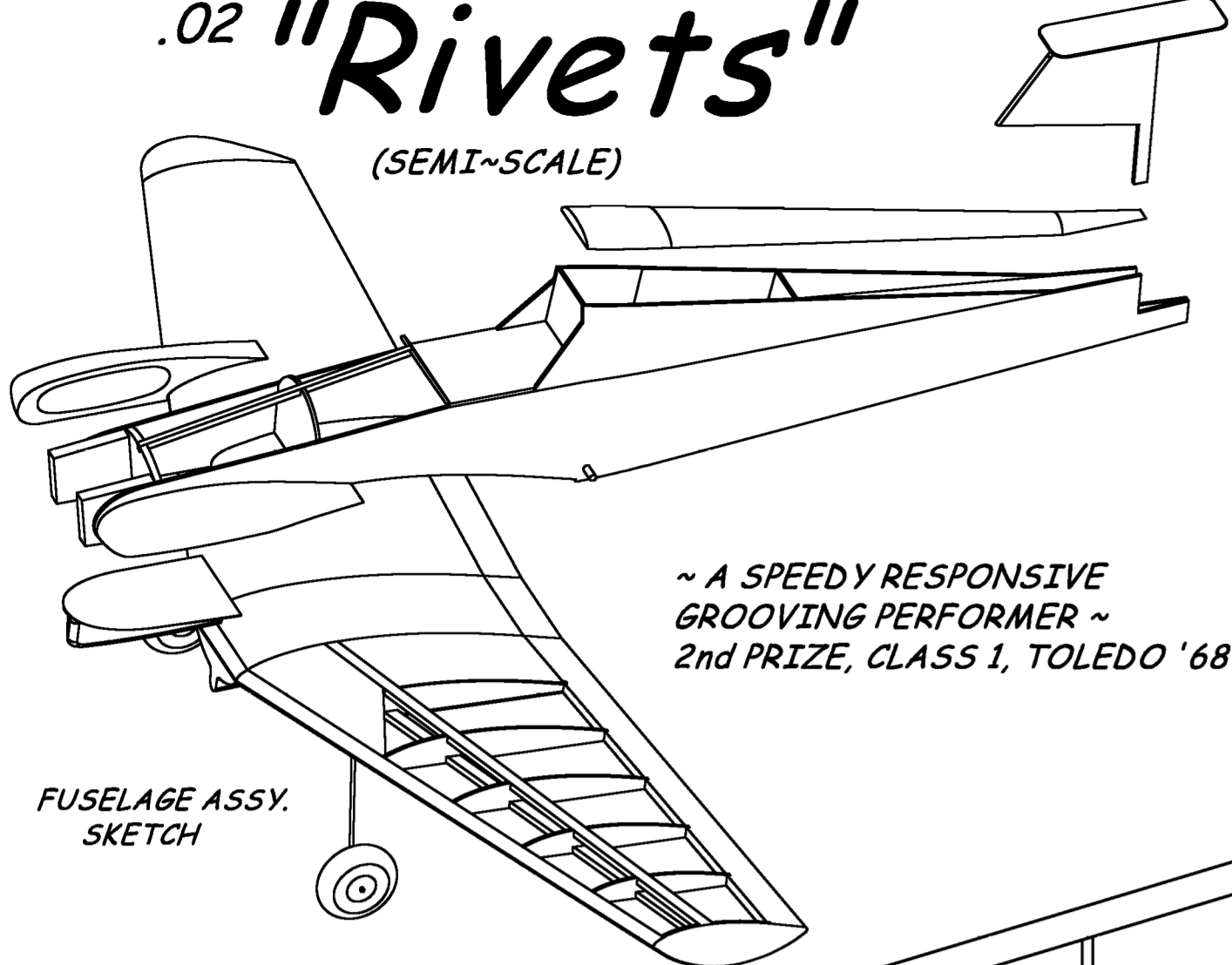
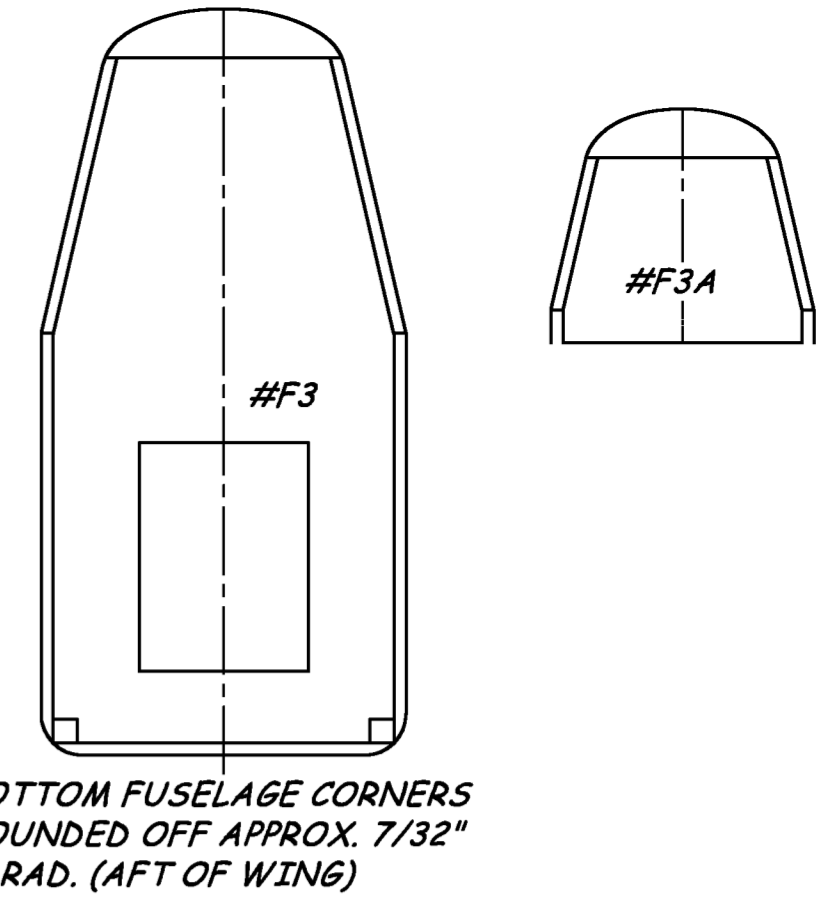
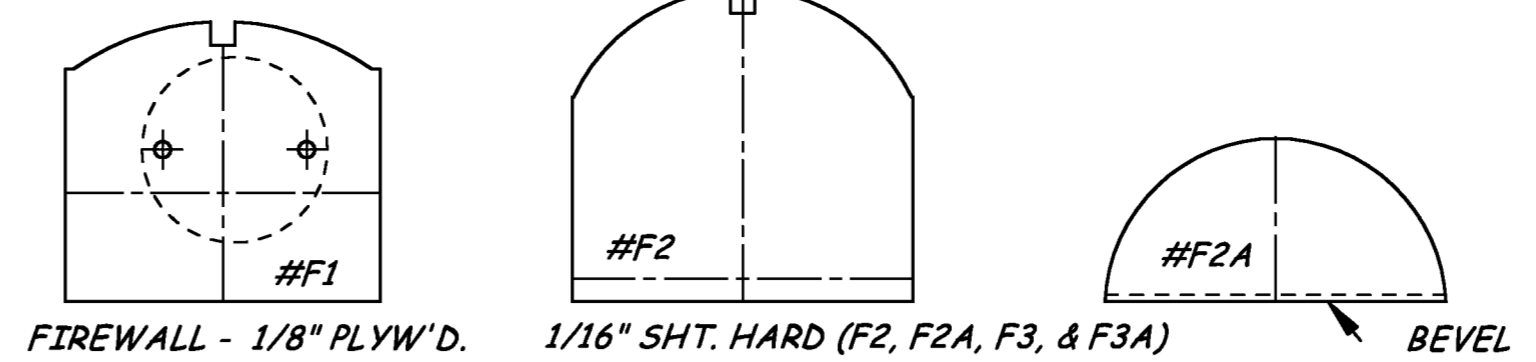
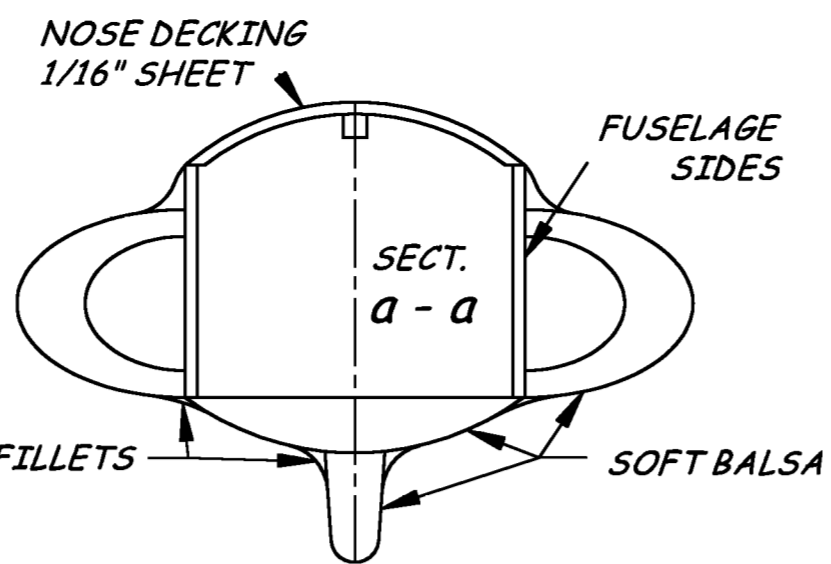


# .02 "Rivets"

(SEMI~SCALE)



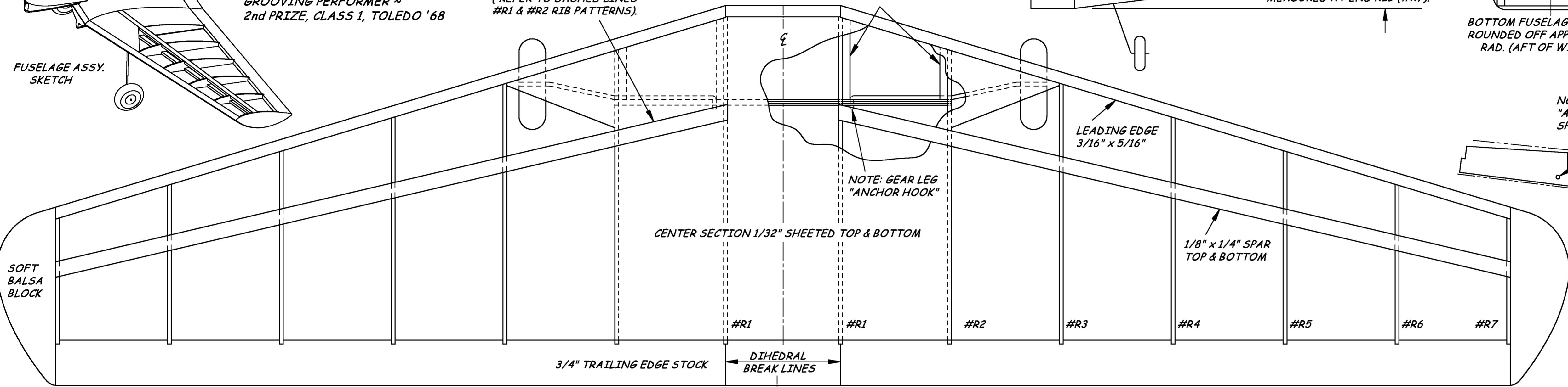
~ A SPEEDY RESPONSIVE GROOVING PERFORMER ~  
2nd PRIZE, CLASS 1, TOLEDO '68



NOTE: EXTERIOR SHEETING SURFACE IS "FLUSH" WITH SPARS, TOP & BOTTOM (REFER TO DASHED LINES #R1 & #R2 RIB PATTERNS).

1/8" SHEET RE-INFORCEMENTS

DIHEDRAL 1-3/8" MEASURED AT END RIB (#R7).

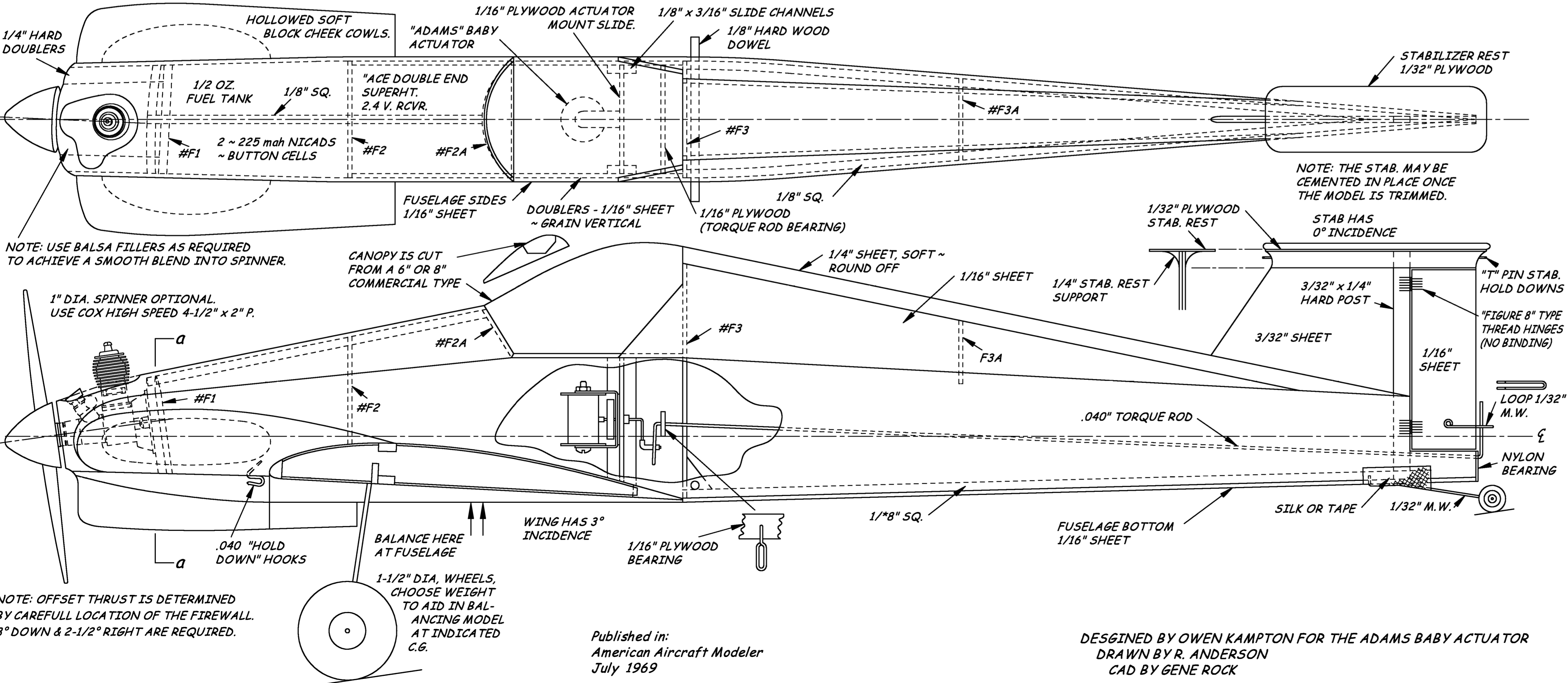


NOTE: 1/16" HOLES IN SPAR TO "ANCHOR" GEAR LEGS. SEE SPAR DETAIL, TOP VIEW.

CENTER SECTION SPAR & L.G. SUPPORT - 3/32" PLYW'D.

GEAR LEGS 1/16" M.W. ~ STITCH & EPOXY TO SPAR.

WING AREA: 118" SQ  
SPAN 26" WT. 10 OZ. WITH EQUIPMENT  
ENG: COX .02 t.d. WITH SEPARATE TANK INSTAL. (USE PLASTIC BACK PLATE SUPPLIED WITH ENGINE)



NOTE: USE Balsa FILLERS AS REQUIRED TO ACHIEVE A SMOOTH BLEND INTO SPINNER.

CANOPY IS CUT FROM A 6" OR 8" COMMERCIAL TYPE

NOTE: THE STAB. MAY BE CEMENTED IN PLACE ONCE THE MODEL IS TRIMMED.

STAB HAS 0° INCIDENCE

1" DIA. SPINNER OPTIONAL. USE COX HIGH SPEED 4-1/2" x 2" P.

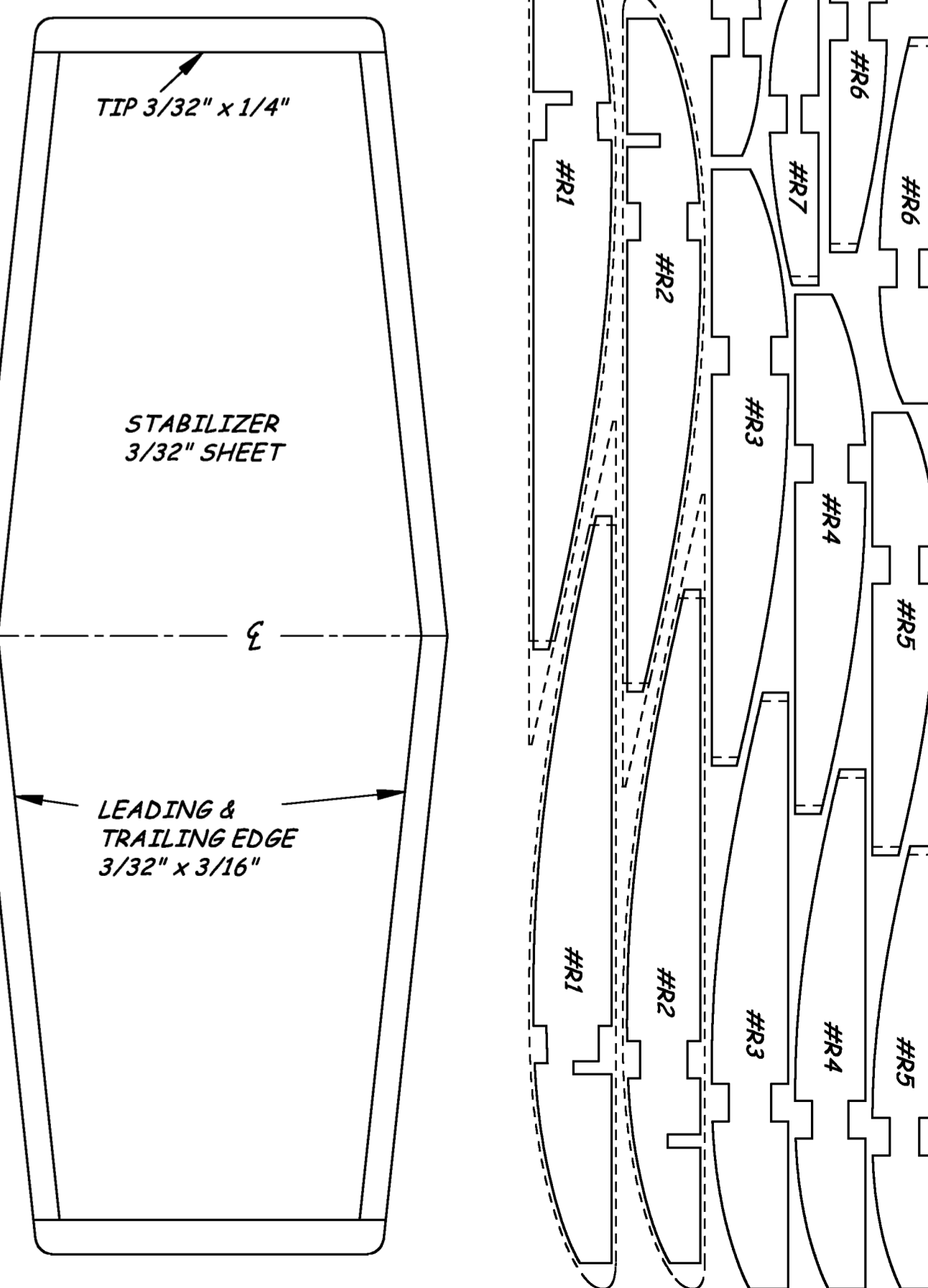
BALANCE HERE AT FUSELAGE

WING HAS 3° INCIDENCE

NOTE: OFFSET THRUST IS DETERMINED BY CAREFULL LOCATION OF THE FIREWALL. 8° DOWN & 2-1/2° RIGHT ARE REQUIRED.

1-1/2" DIA. WHEELS. CHOOSE WEIGHT TO AID IN BALANCING MODEL AT INDICATED C.G.

NOTE: ALL WING RIBS 1/16" SHEET

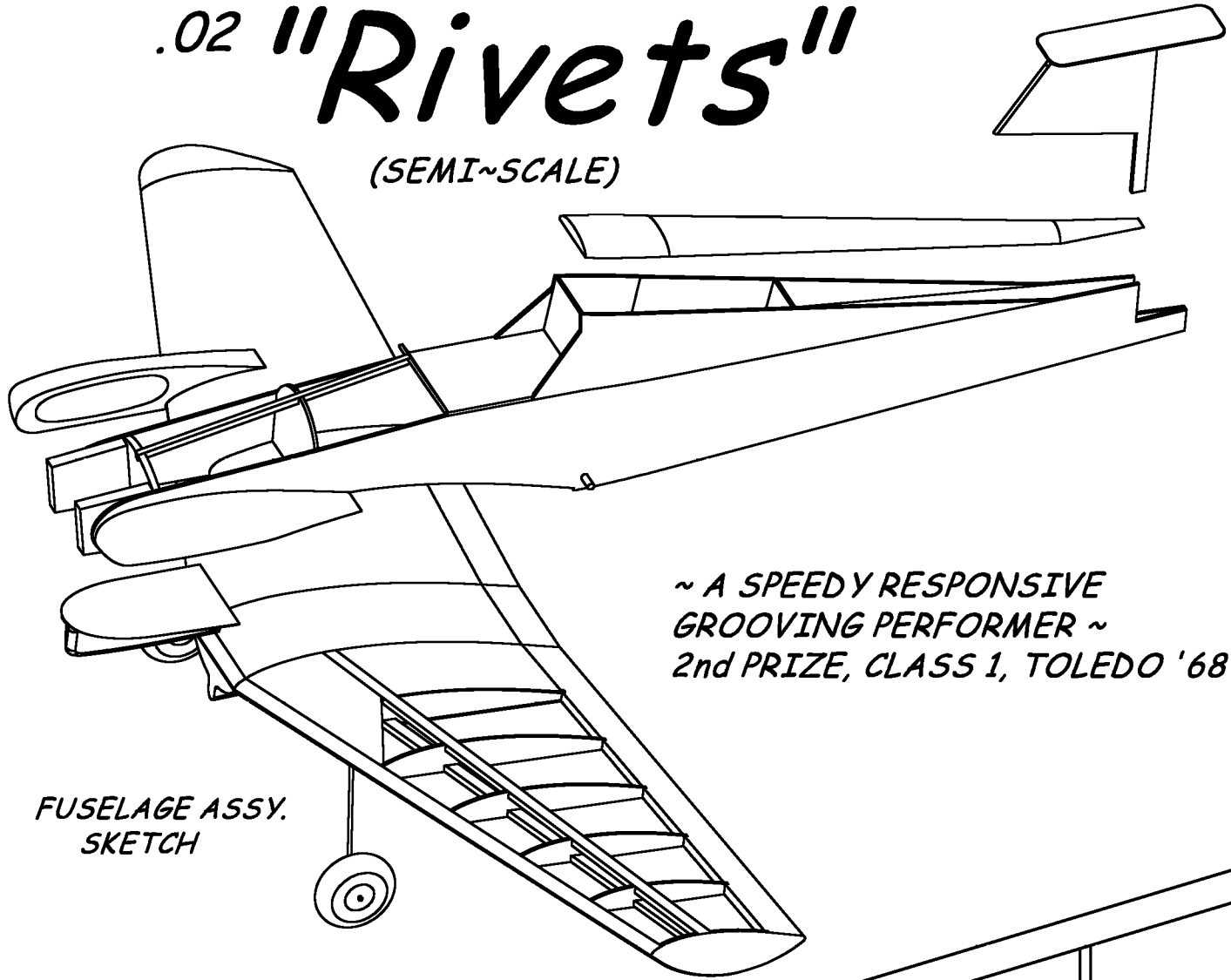


Published in:  
American Aircraft Modeler  
July 1969

DESIGNED BY OWEN KAMPTON FOR THE ADAMS BABY ACTUATOR  
DRAWN BY R. ANDERSON  
CAD BY GENE ROCK

# .02 "Rivets"

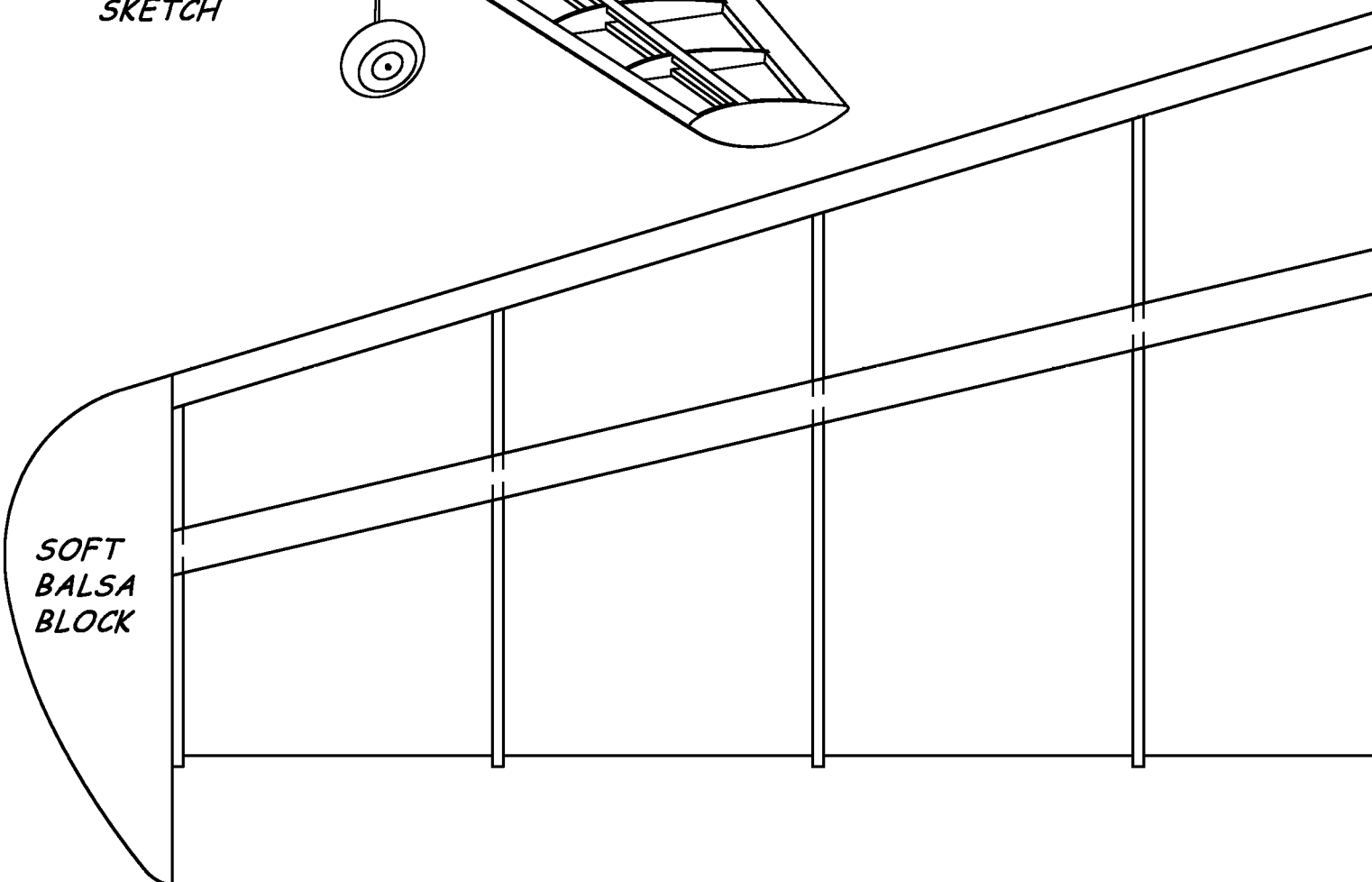
(SEMI~SCALE)

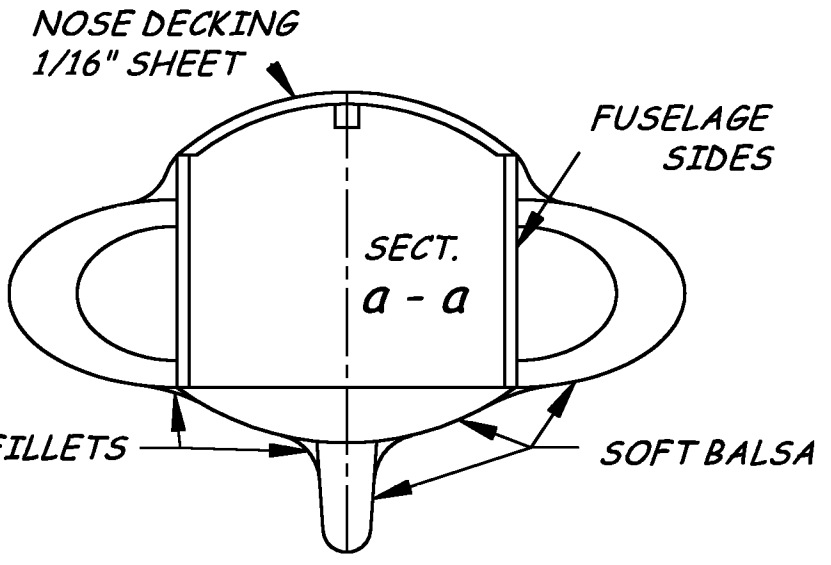


FUSELAGE ASSY.  
SKETCH

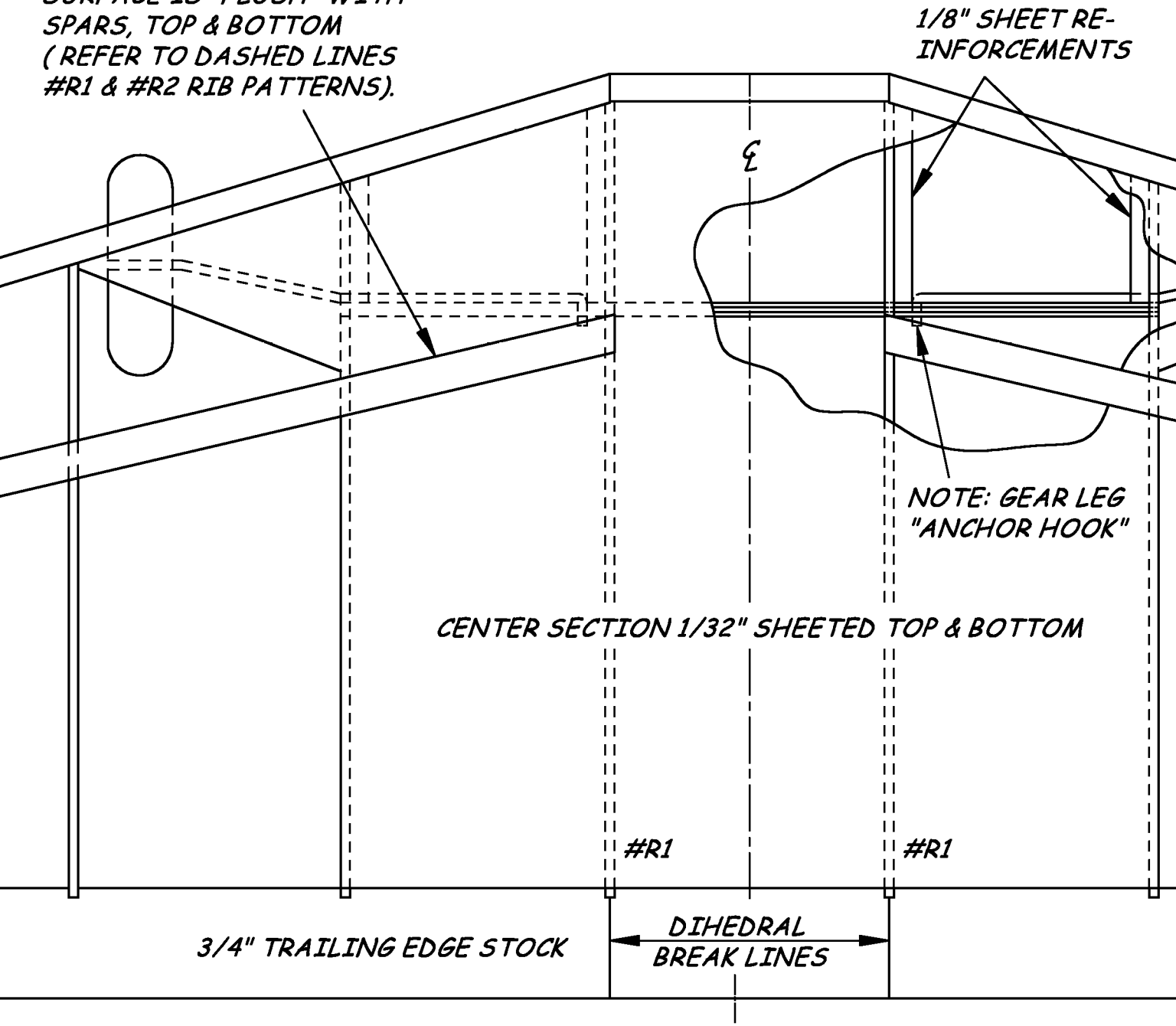
~ A SPEEDY RESPONSIVE  
GROOVING PERFORMER ~  
2nd PRIZE, CLASS 1, TOLEDO '68

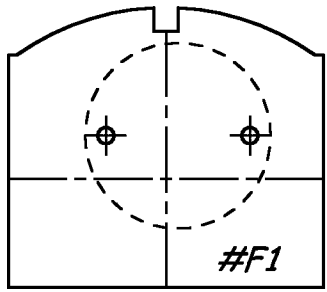
SOFT  
BALSA  
BLOCK



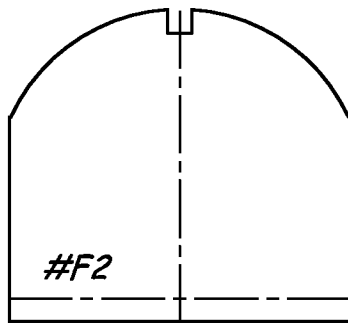


NOTE: EXTERIOR SHEETING  
SURFACE IS "FLUSH" WITH  
SPARS, TOP & BOTTOM  
(REFER TO DASHED LINES  
#R1 & #R2 RIB PATTERNS).

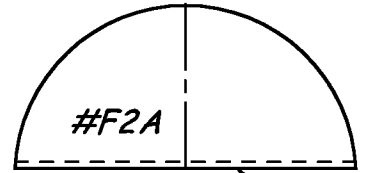




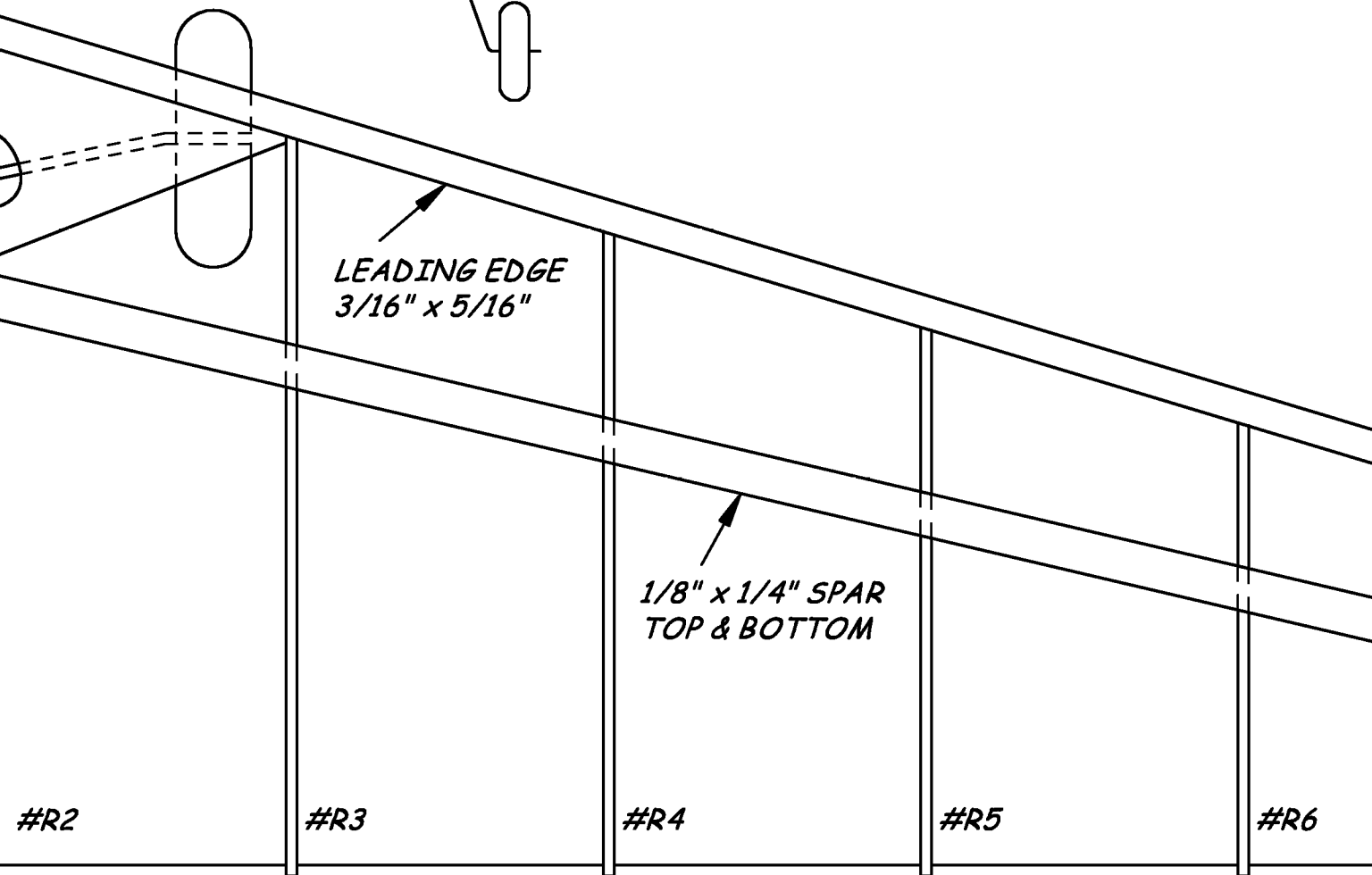
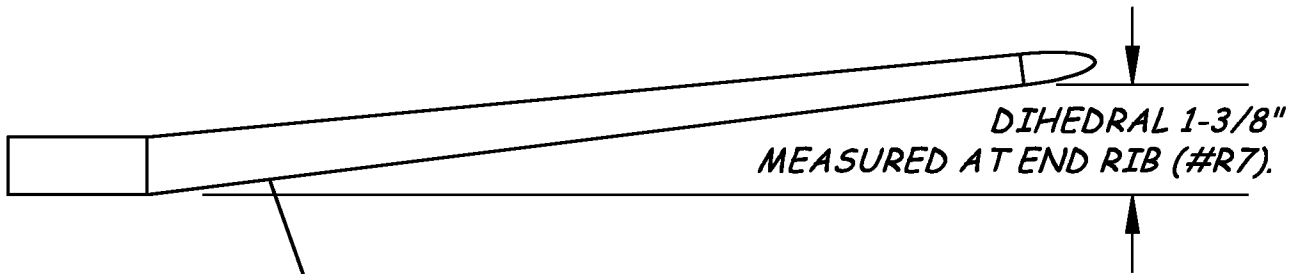
FIREWALL - 1/8" PLYW'D.



1/16" SHT. HARD (F2, F2A, F3, & F3A)



BEVEL



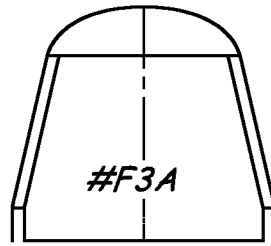
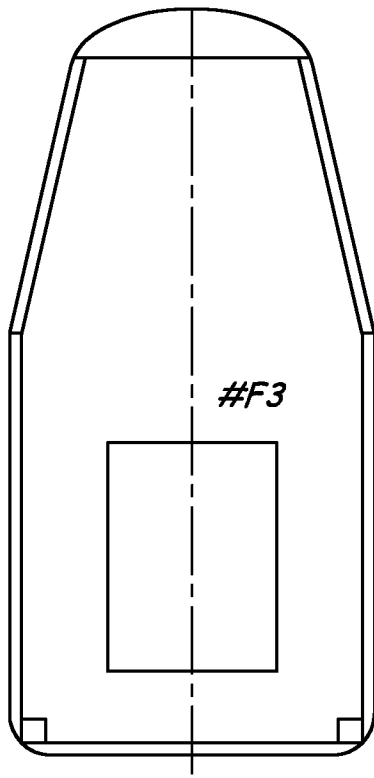
#R2

#R3

#R4

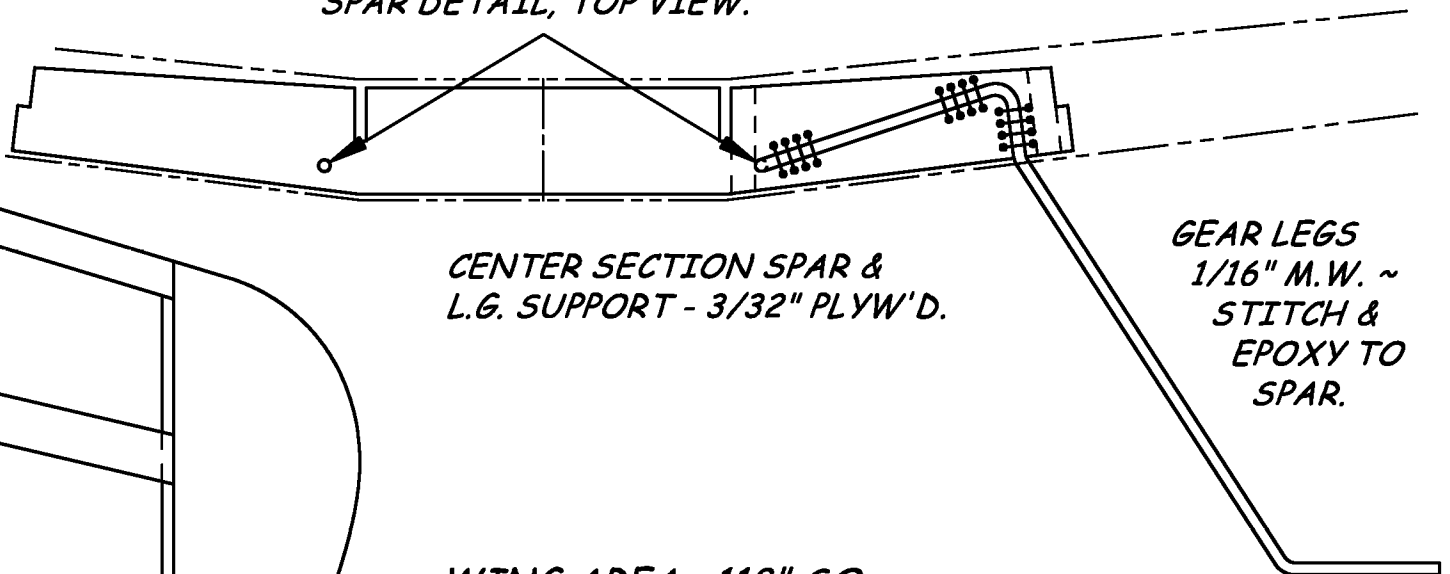
#R5

#R6



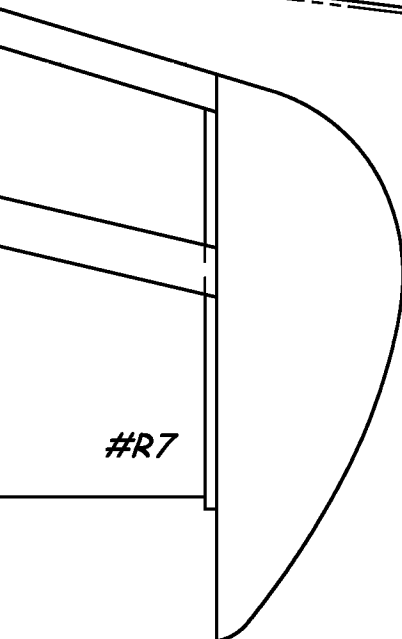
*BOTTOM FUSELAGE CORNERS  
ROUNDED OFF APPROX. 7/32"  
RAD. (AFT OF WING)*

*NOTE: 1/16" HOLES IN SPAR TO  
"ANCHOR" GEAR LEGS. SEE  
SPAR DETAIL, TOP VIEW.*



*CENTER SECTION SPAR &  
L.G. SUPPORT - 3/32" PLYW'D.*

*GEAR LEGS  
1/16" M.W. ~  
STITCH &  
EPOXY TO  
SPAR.*



*WING AREA: 118" SQ  
SPAN 26" WT. 10 OZ. WITH EQUIPMENT  
ENG: COX .02 t.d. WITH SEPARATE TANK  
INSTAL. (USE PLASTIC BACK PLATE SUP-  
PLIED WITH ENGINE)*

1/4" HARD DOUBLERS

HOLLOWED SOFT BLOCK CHEEK COWLS.

"ADAMS" BABY ACTUATOR

1/16" PL

1/2 OZ. FUEL TANK

1/8" SQ.

"ACE DOUBLE END SUPERHT. 2.4 V. RCVR.

2 ~ 225 mah NICADS ~ BUTTON CELLS

#F1

#F2

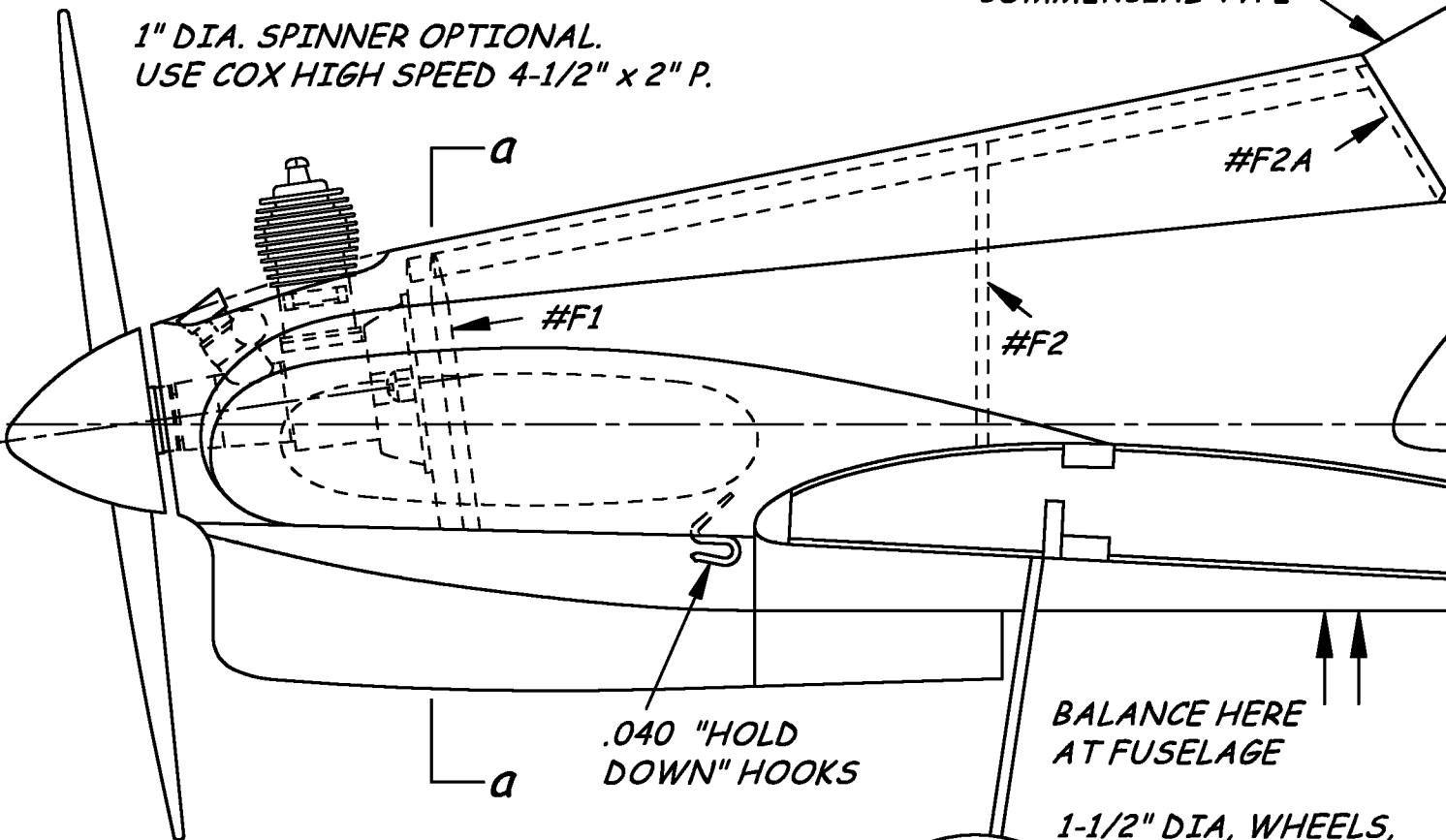
#F2A

FUSELAGE SIDES 1/16" SHEET

NOTE: USE Balsa FILLERS AS REQUIRED TO ACHIEVE A SMOOTH BLEND INTO SPINNER.

CANOPY IS CUT FROM A 6" OR 8" COMMERCIAL TYPE

1" DIA. SPINNER OPTIONAL. USE COX HIGH SPEED 4-1/2" x 2" P.

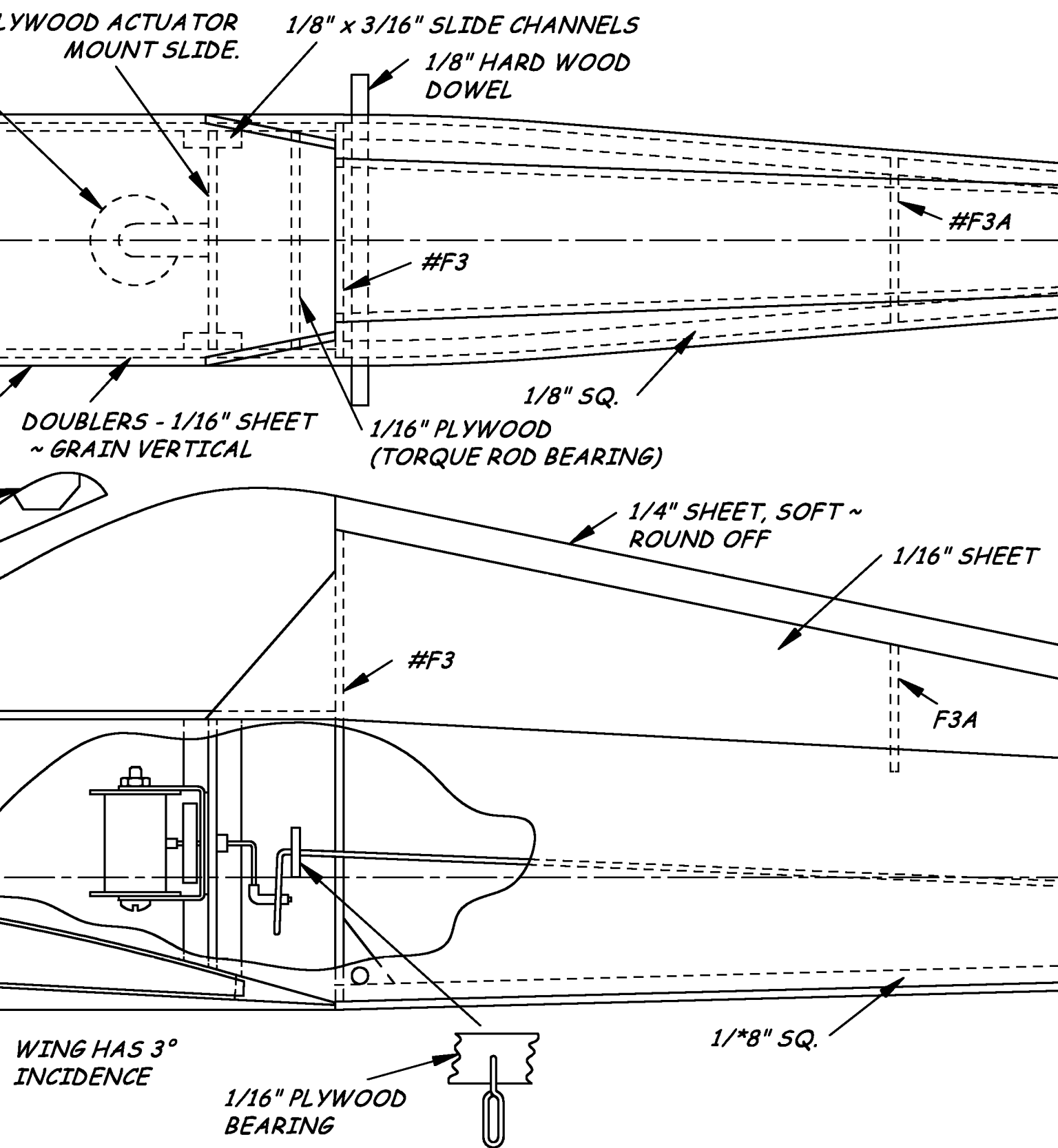


.040 "HOLD DOWN" HOOKS

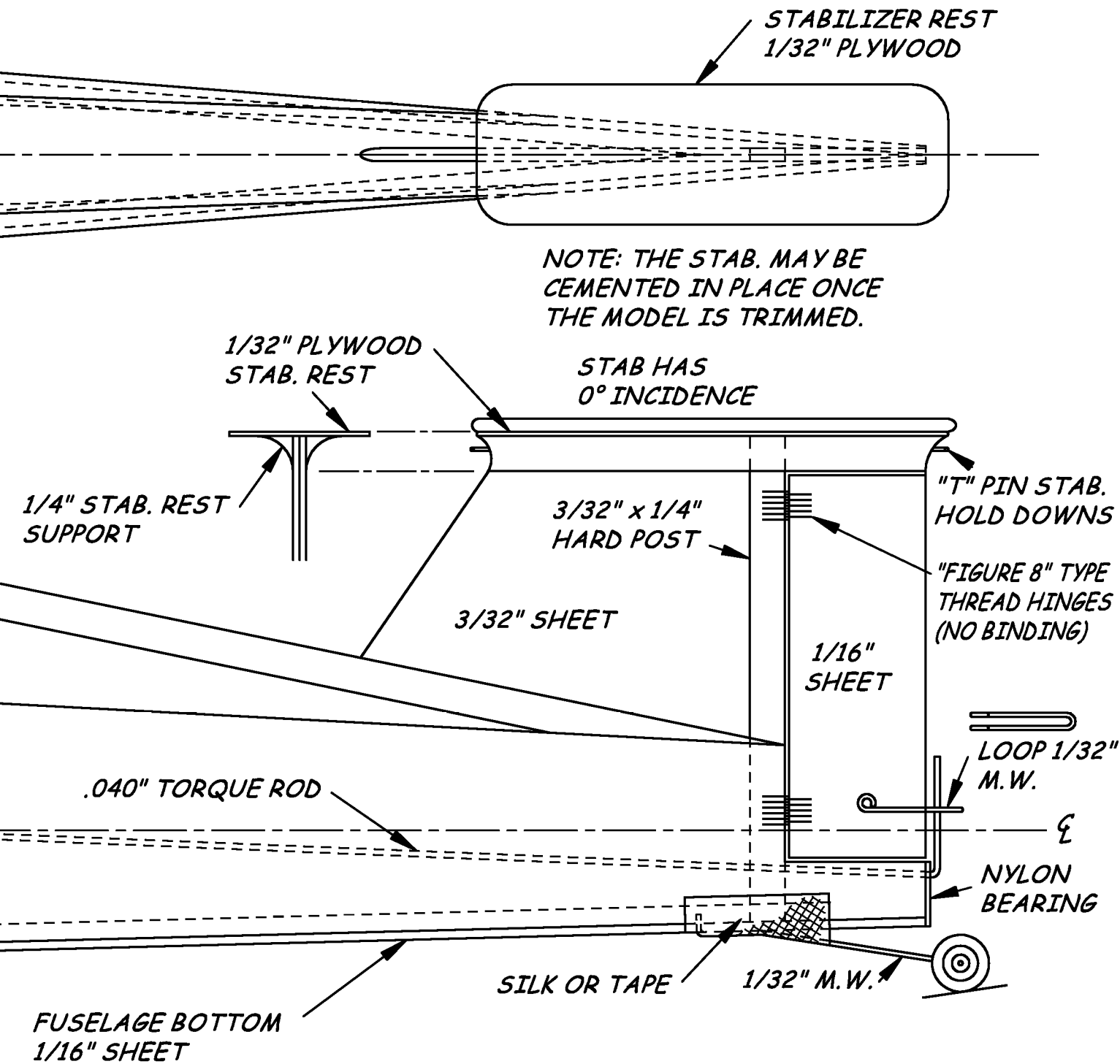
BALANCE HERE AT FUSELAGE

1-1/2" DIA, WHEELS, CHOOSE WEIGHT TO AID IN BALANCING MODEL AT INDICATED C.G.

NOTE: OFFSET THRUST IS DETERMINED BY CAREFULL LOCATION OF THE FIREWALL. 8° DOWN & 2-1/2° RIGHT ARE REQUIRED.



Published in:  
 American Aircraft Modeler  
 July 1969



DESIGNED BY OWEN KAMPTON FOR THE ADAMS BABY ACTUATOR  
 DRAWN BY R. ANDERSON  
 CAD BY GENE ROCK

NOTE: ALL WING RIBS  
1/16" SHEET

