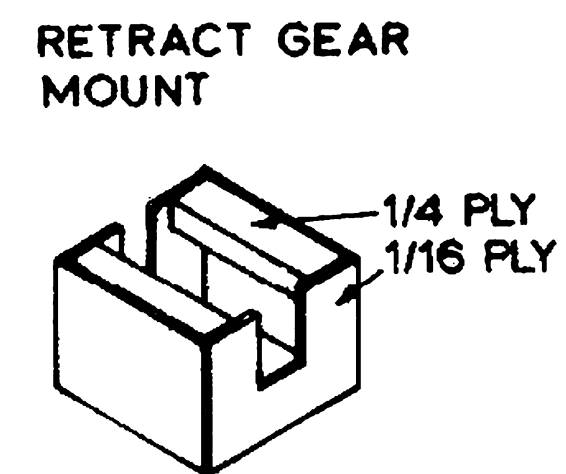
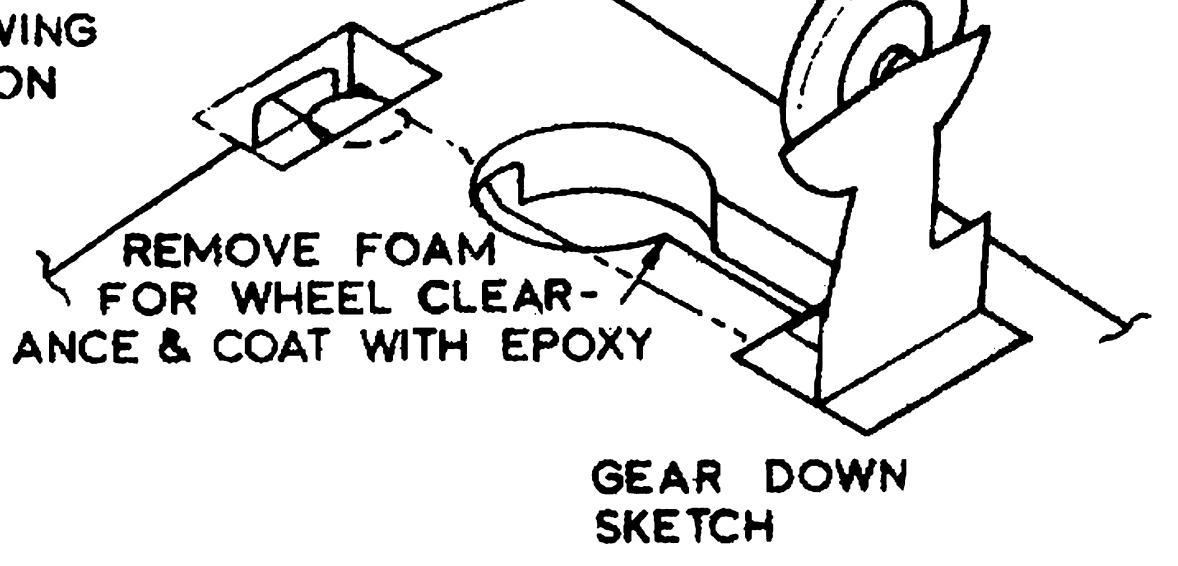
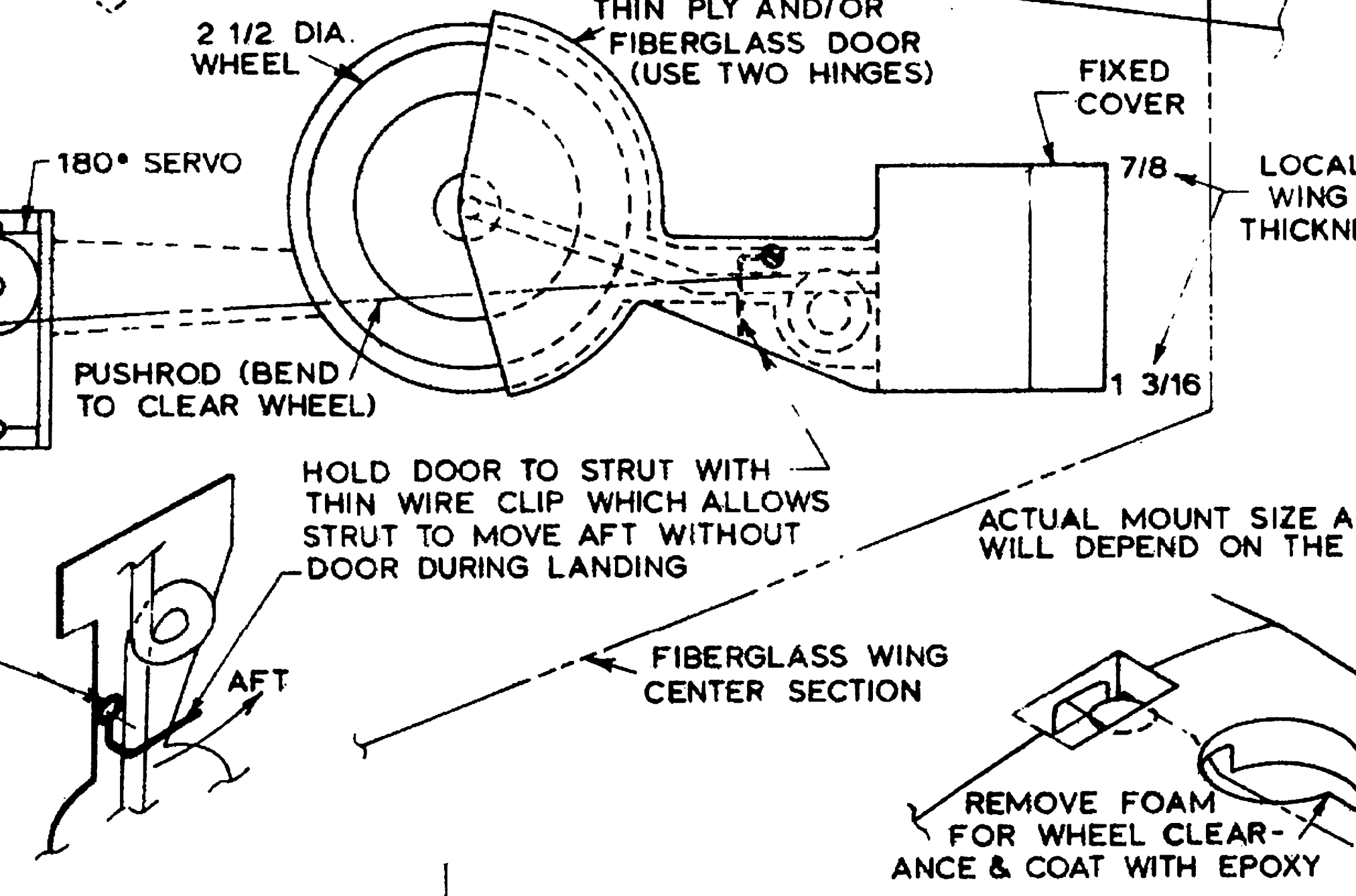


RETRACTABLE LANDING GEAR INSTALLATION NO. 3



MAKE BOX FROM 1/16 PLY, MOUNT GEAR ON 1/4 PLY WITH SHEET METAL SCREWS TRIM BOX TO FIT AIRFOIL



NOTE: ALL CONTROL SURFACES SHOULD USE THREE HINGES

STABILIZER & ELEVATOR LIGHT 1/4 Balsa

FIXED PARTS ATTACHED TO FUSELAGE

1/4 PLY CONTROL HORN MOUNT

RUDDER DEFLECTION = 3/4 RT.

ELEVATOR DEFLECTION = 2/3 B

MORE SCALE LANDING GEAR NO. 4 (FUSELAGE MOUNTED)
BOLT TO NEW 1/4 PLY BULKHEAD USE 1/4 PLY BACKING AND DRILL FOR 5/32 WIRE

SCALE - INCHES
0 1 2 3 4 5

PHONY FOLKERTS
FAI PYLON RACER
DESIGNED AND DRAWN BY BOB ROOT
WING AREA = 605 in.² STAB. AREA = 105 in.²
SPAN = 56 in. LENGTH = 44 1/2 in.
WEIGHT = 4.85 lb. ENGINE = .40 cu. in.