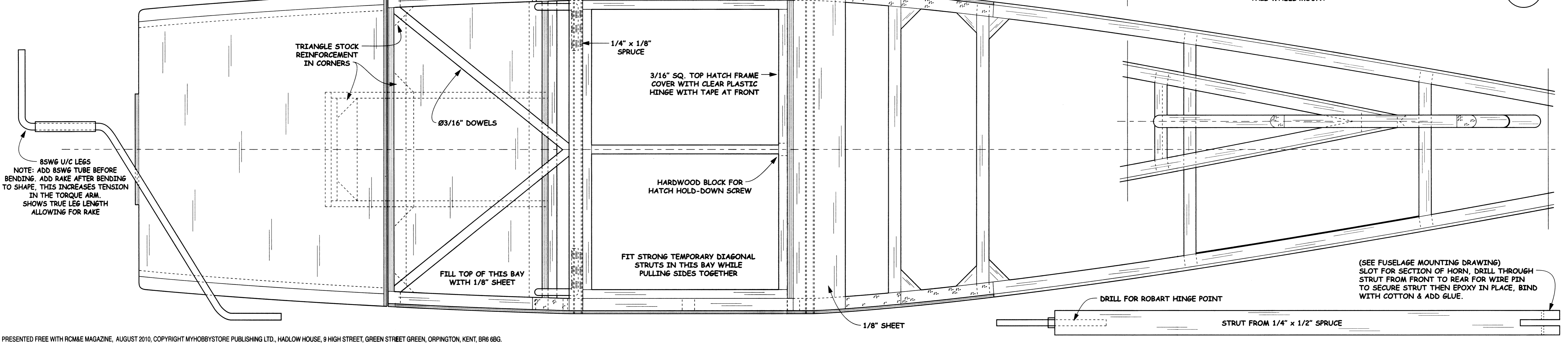
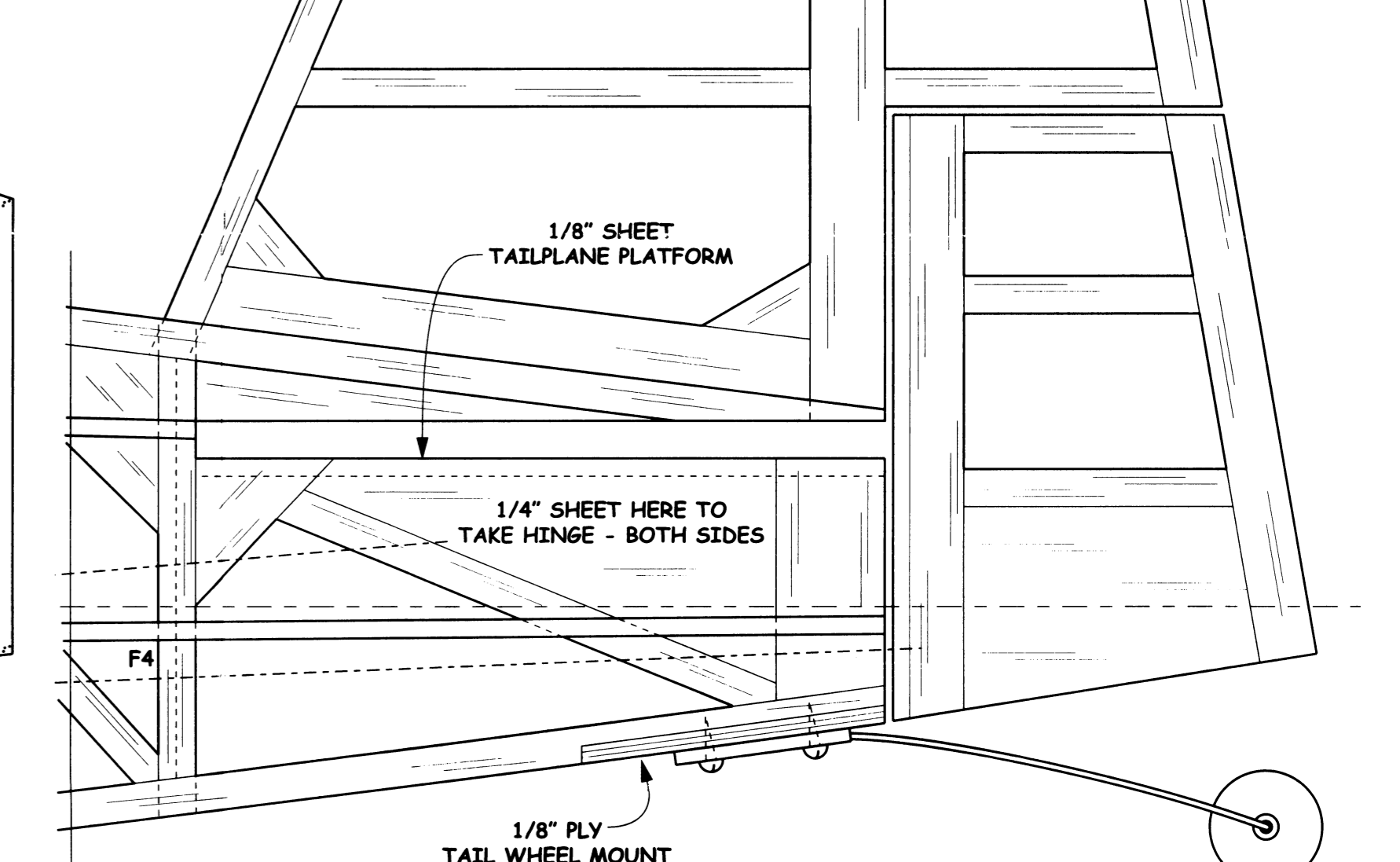
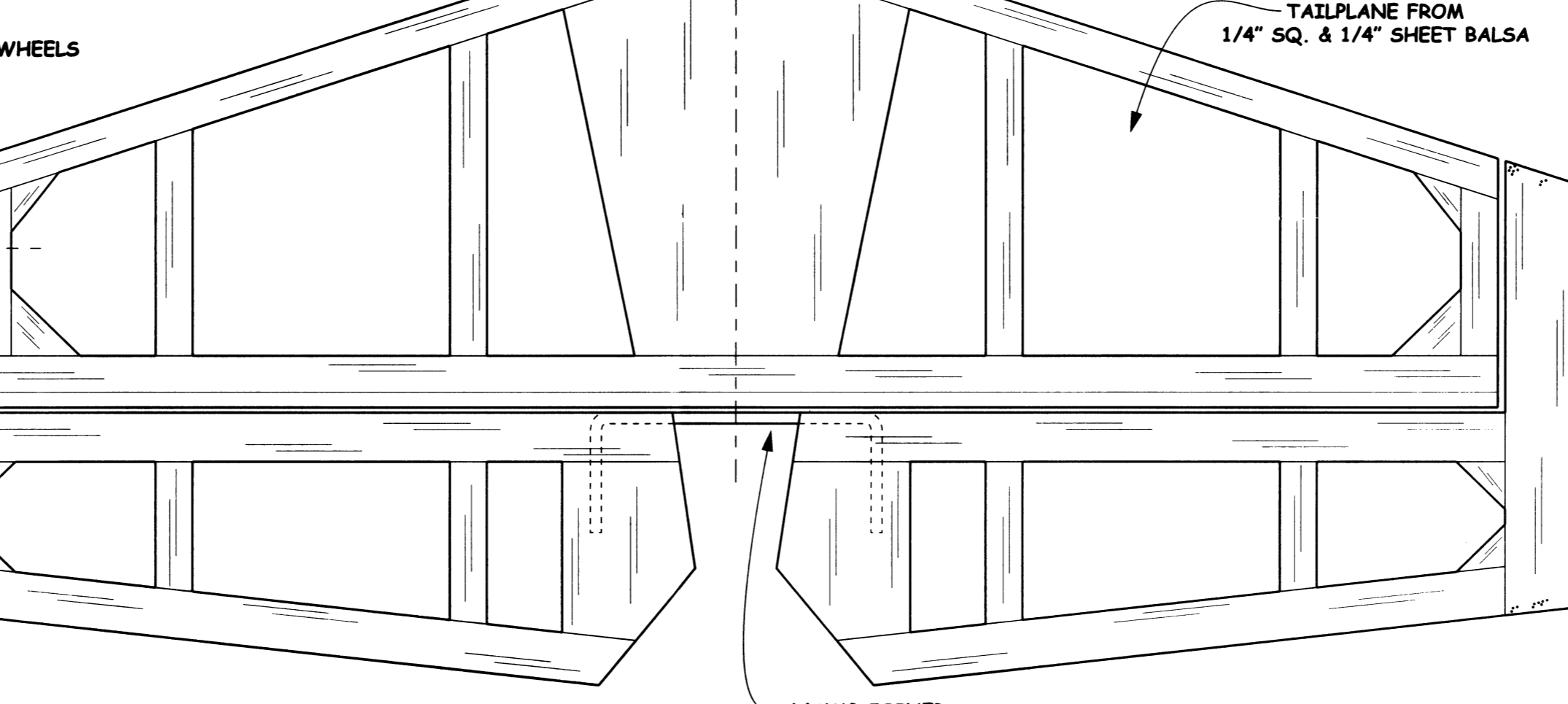
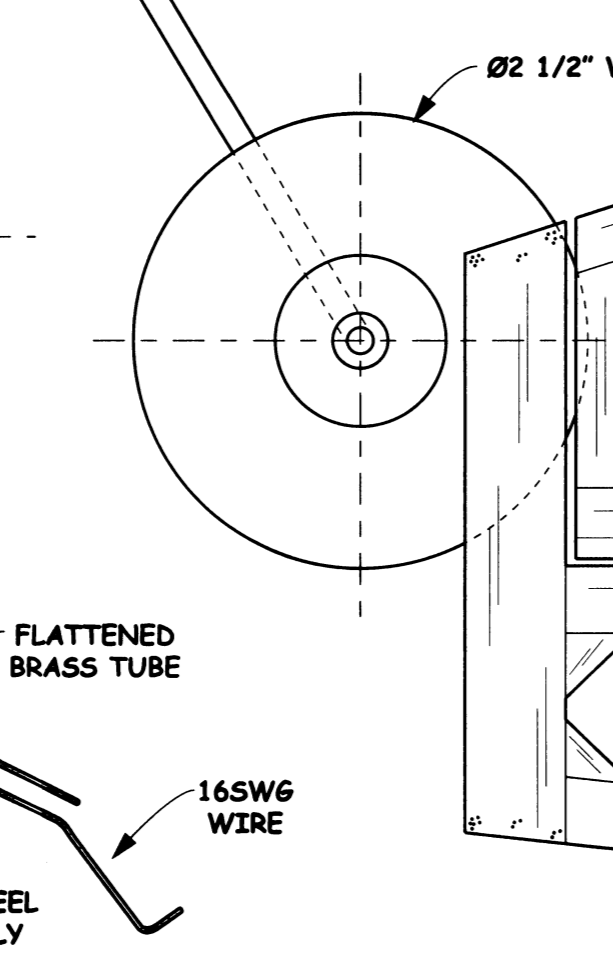
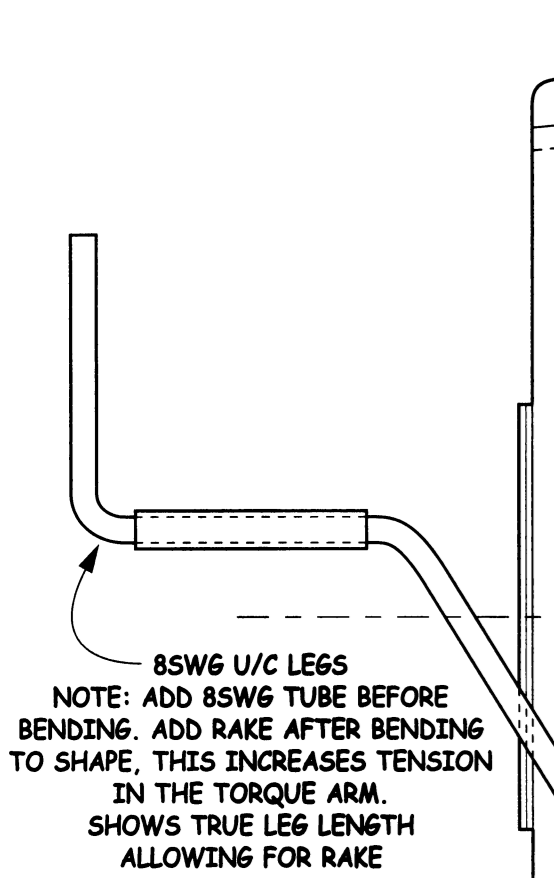
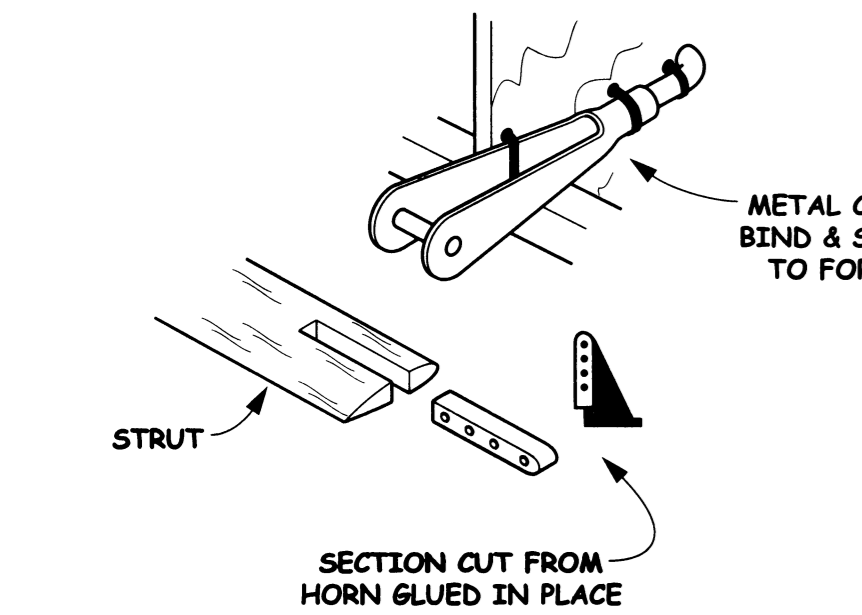
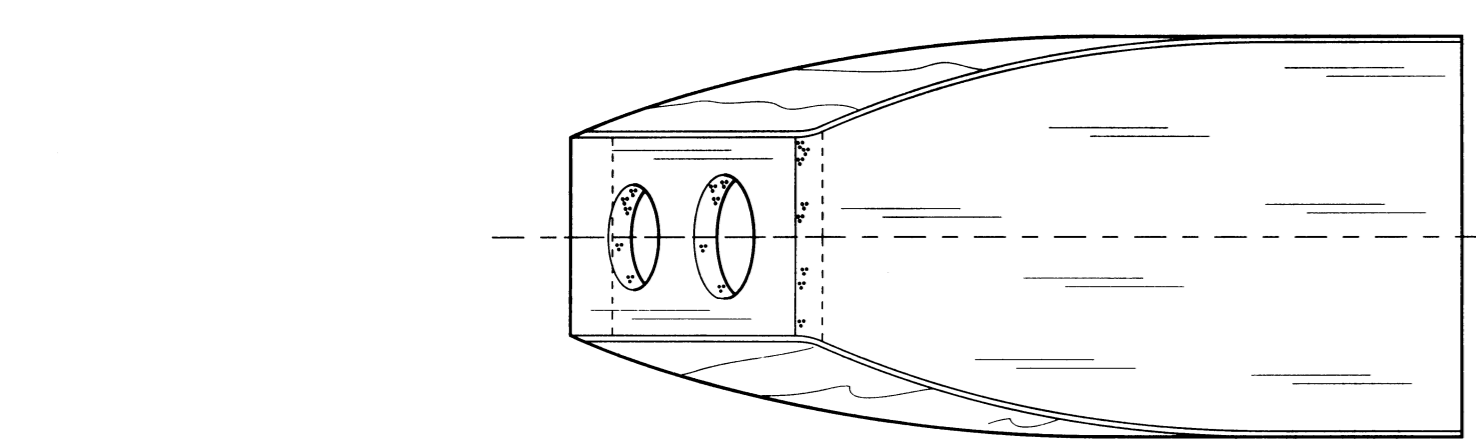
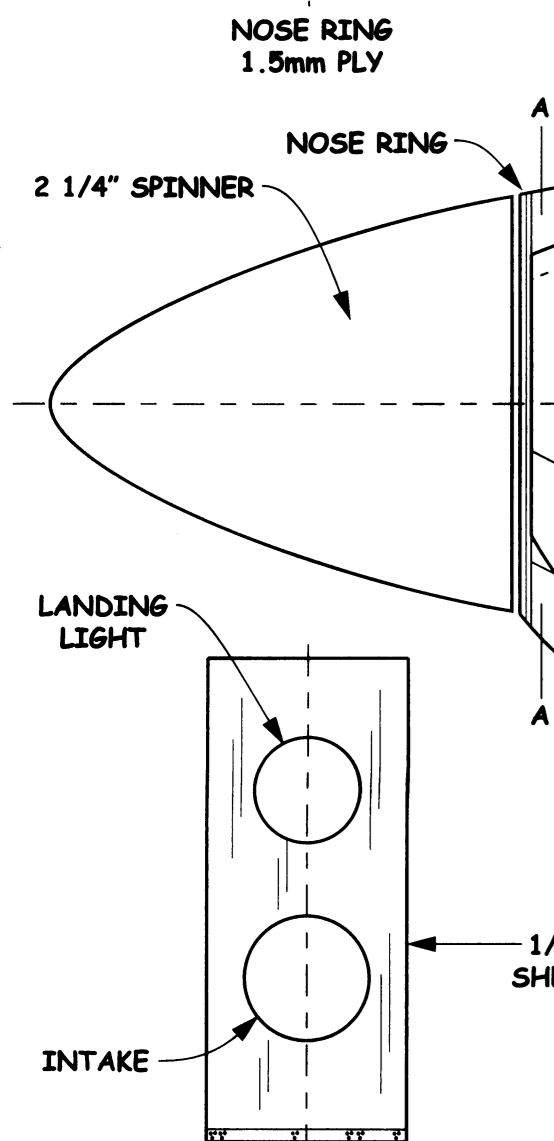
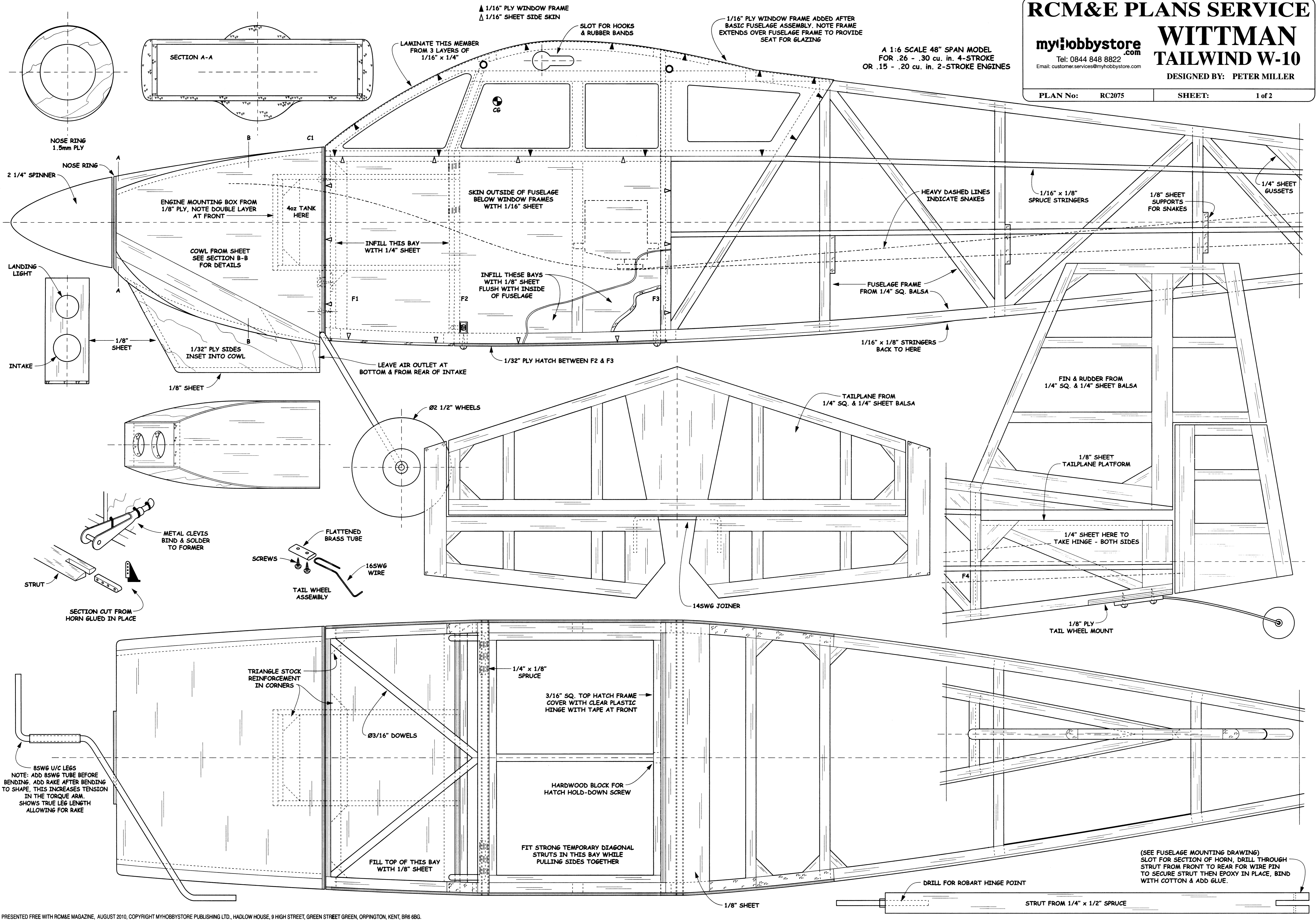


A 1:6 SCALE 48" SPAN MODEL  
FOR .26 - .30 cu. in. 4-STROKE  
OR .15 - .20 cu. in. 2-STROKE ENGINES



(SEE FUSELAGE MOUNTING DRAWING)  
SLOT FOR SECTION OF HORN, DRILL THROUGH STRUT FROM FRONT TO REAR FOR WIRE PIN TO SECURE STRUT THEN EPOXY IN PLACE, BIND WITH COTTON & ADD GLUE.

**RCM&E PLANS SERVICE**  
**myhobbystore.com**  
 Tel: 0844 848 8822  
 Email: customer.services@myhobbystore.com  
**WITTMAN**  
**TAILWIND W-10**  
 DESIGNED BY: PETER MILLER  
 PLAN No: RC2075 SHEET: 2 of 2

