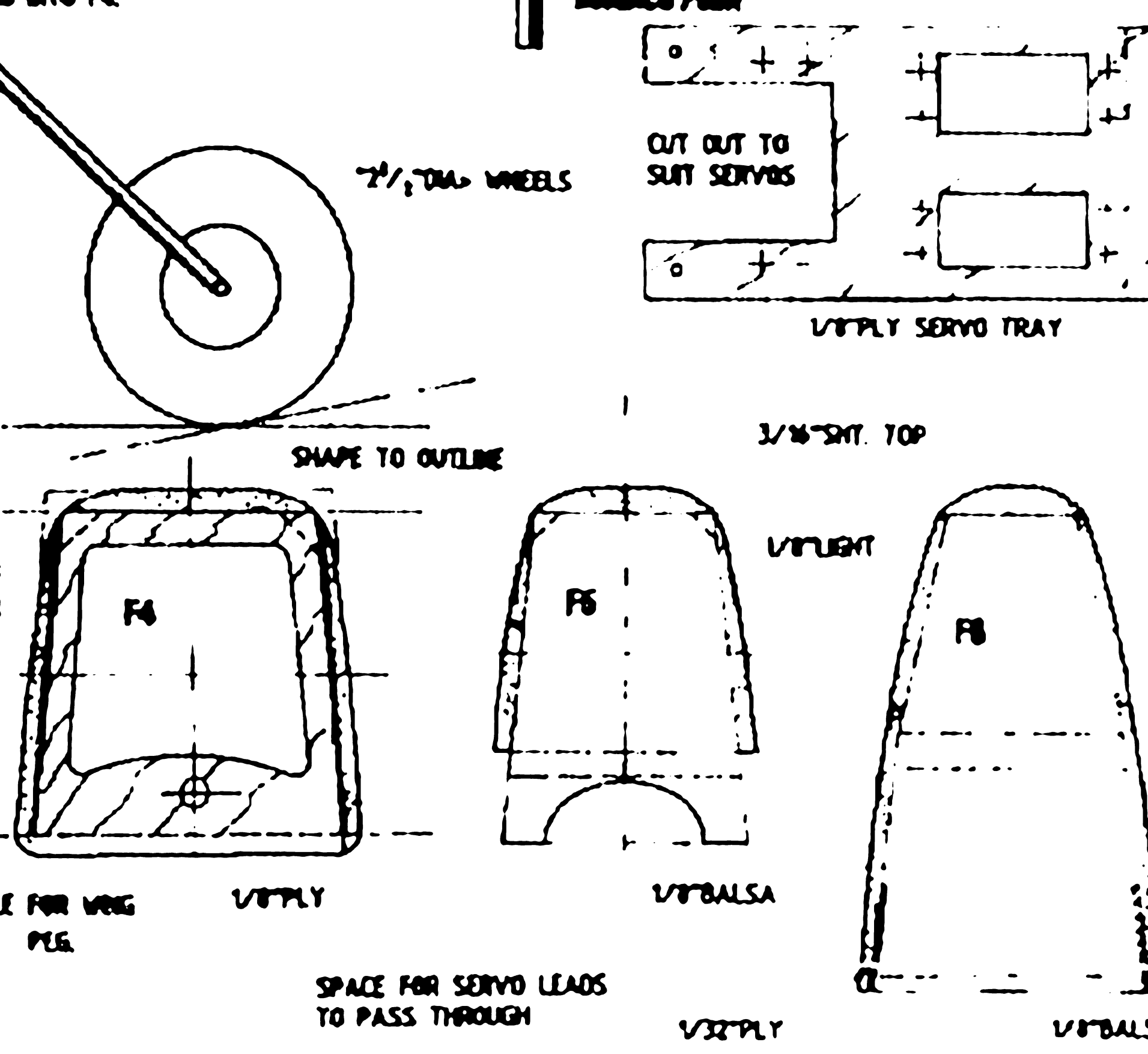
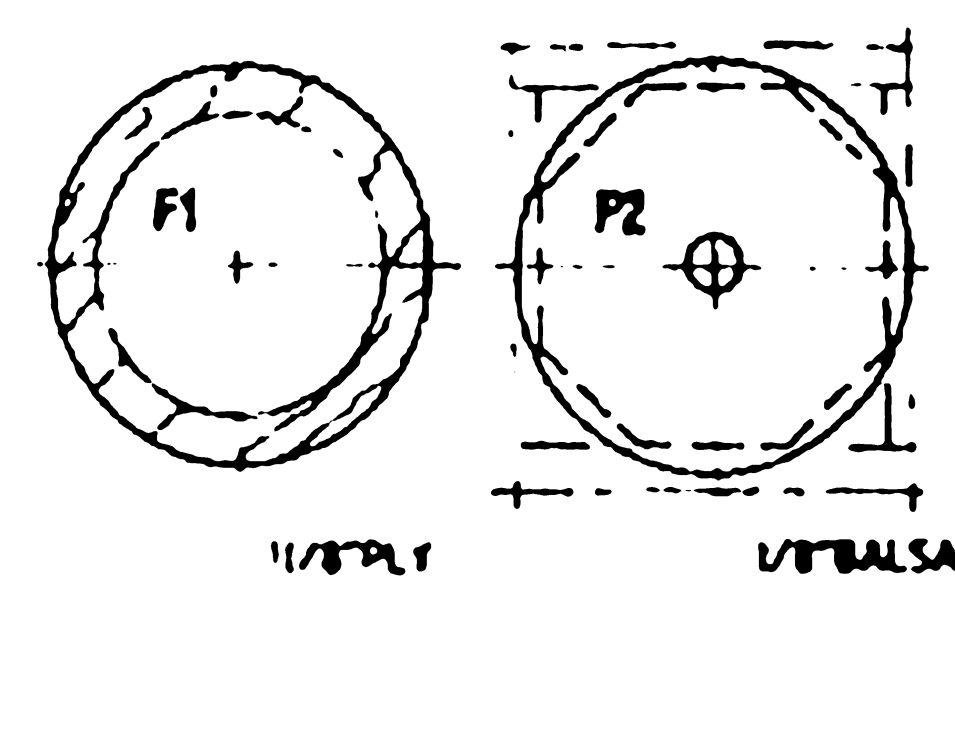
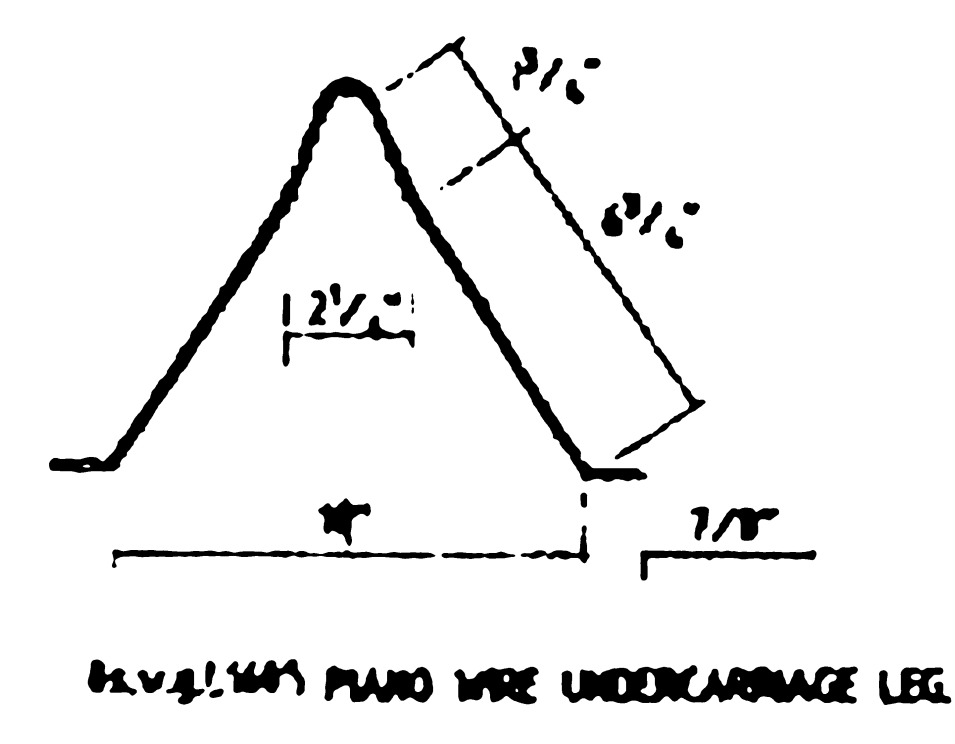
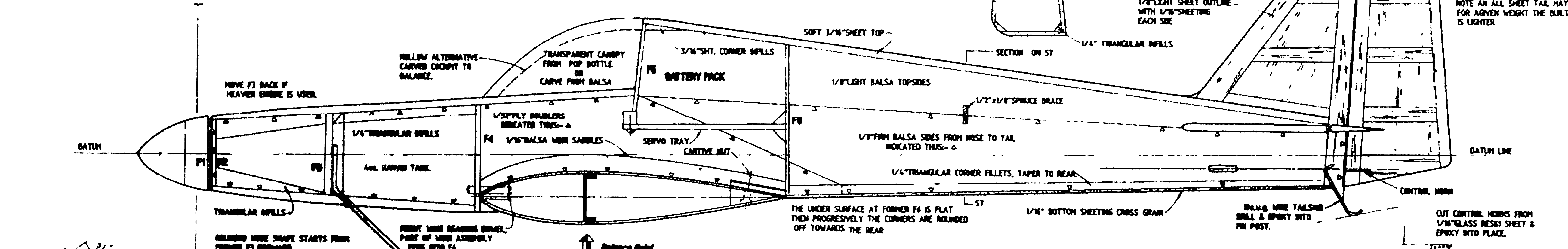
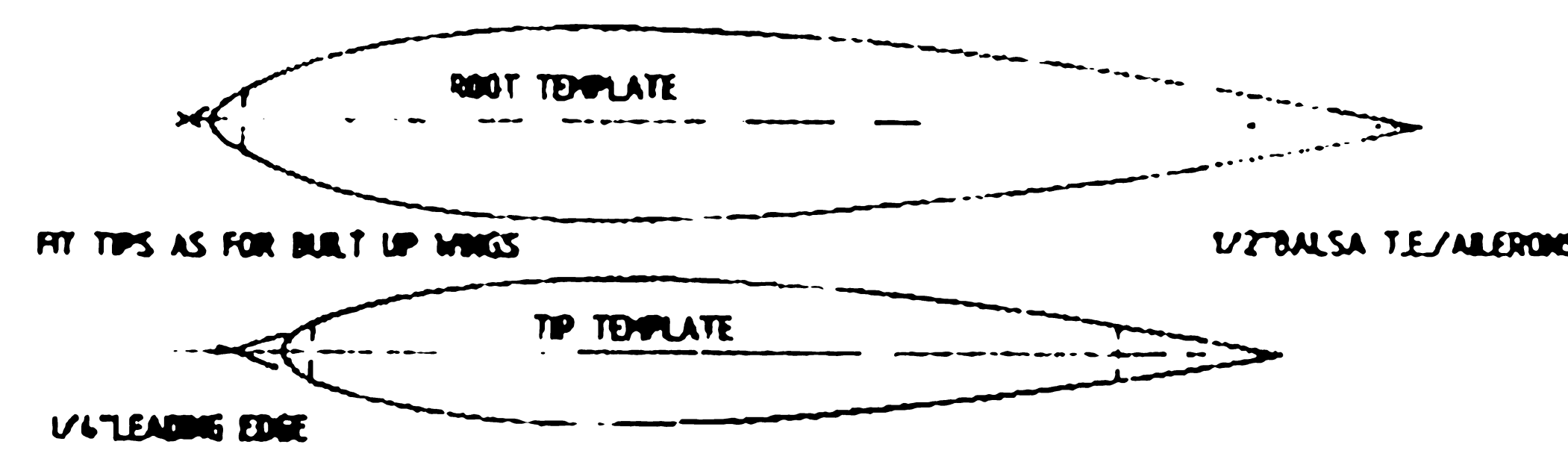


JAZZ TWENTY

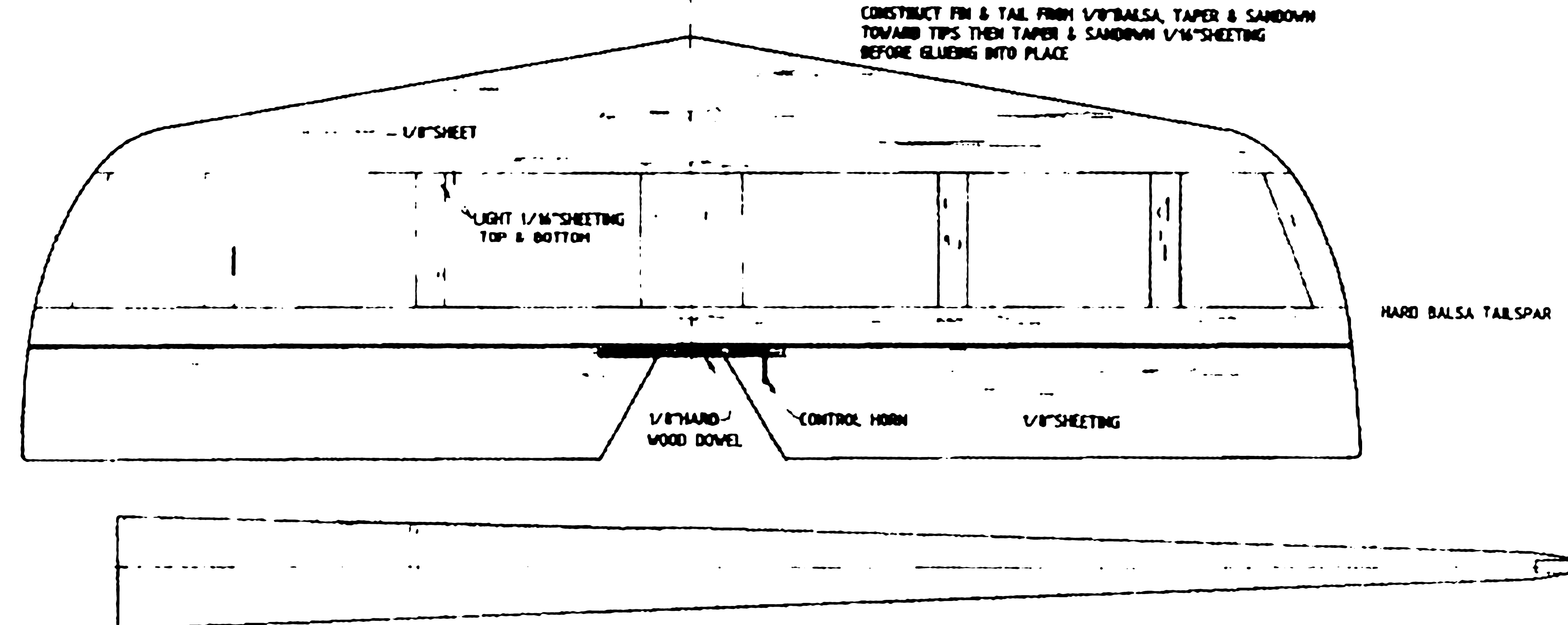
CONTROL THINGS-

AILERONS - 3/16" UP & DOWN
ELEVATORS - 3/8" UP & DOWN
RUDDER - 1" EACH WAY

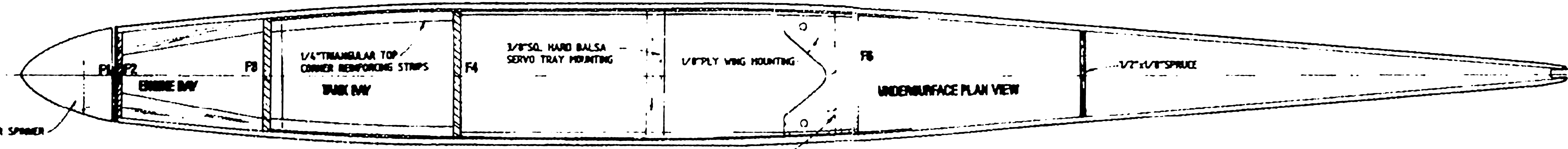
TEMPLATES FOR ALTERNATIVE FOAM CORE WINGS



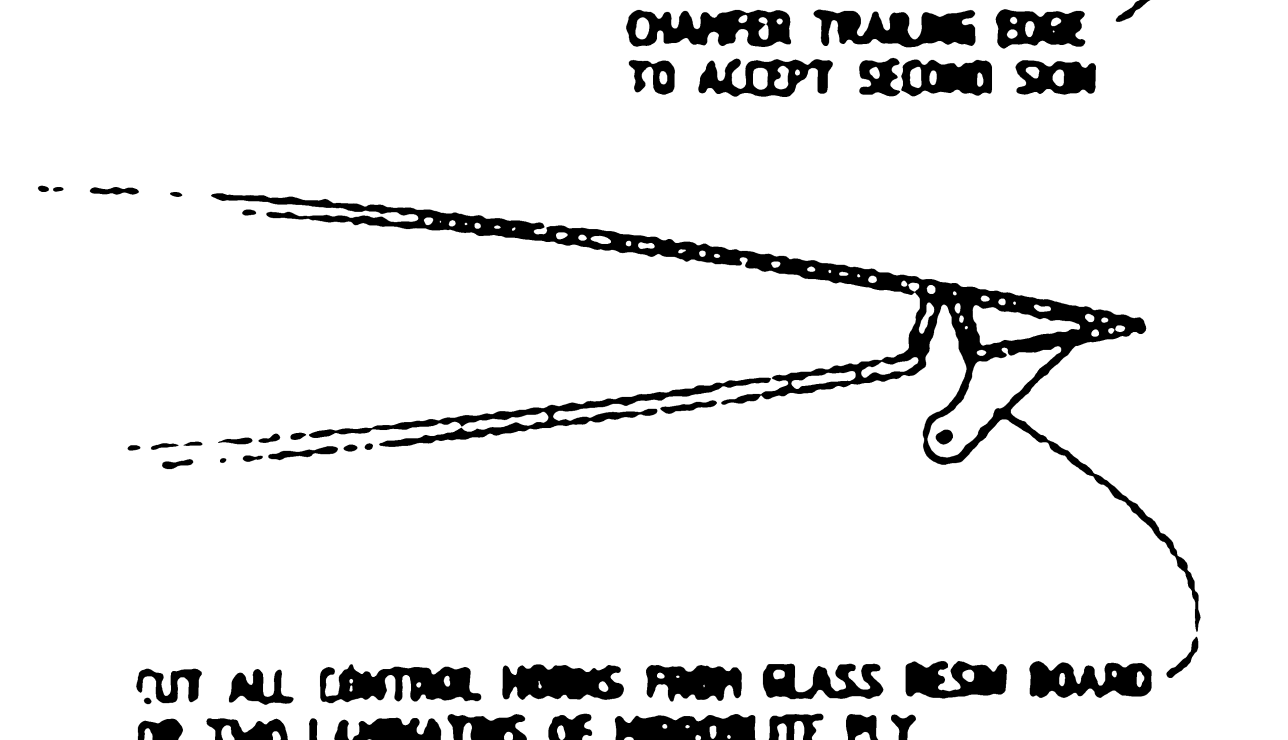
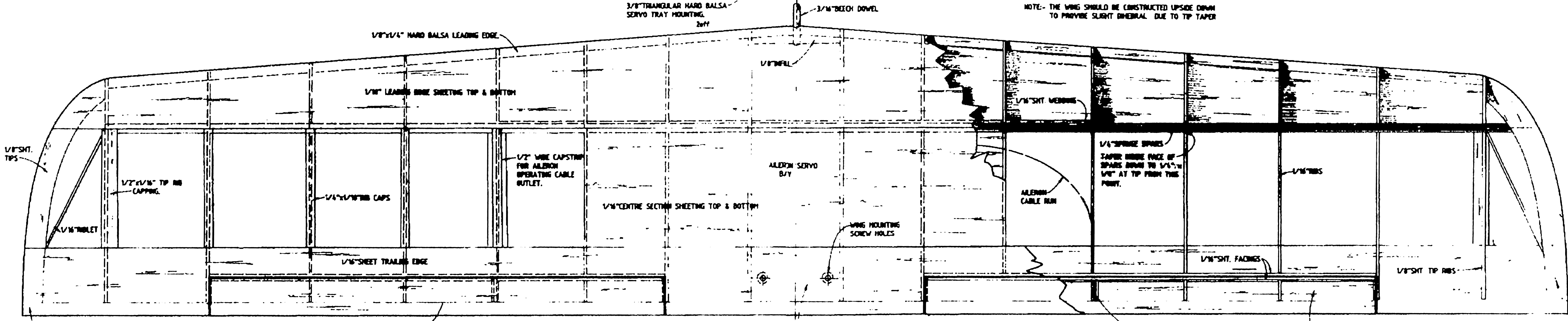
THIS END OF SERVO TRAY IS SLIDE FIT INTO SLOT FORMED BY TRIANGULAR HARD BALSAM BEAMS.



CUT AWAY THIS SIDE FOR ENGINES MOUNTED SIDEWINDER FASHION USE CAST ENGINE MOUNT



NOTE - THE WING SHOULD BE CONSTRUCTED UPSIDE DOWN TO PROVIDE SLIGHT DIHEDRAL DUE TO TIP TAPER



IRON ON HINCE FROM H & H DEVELOPMENTS

