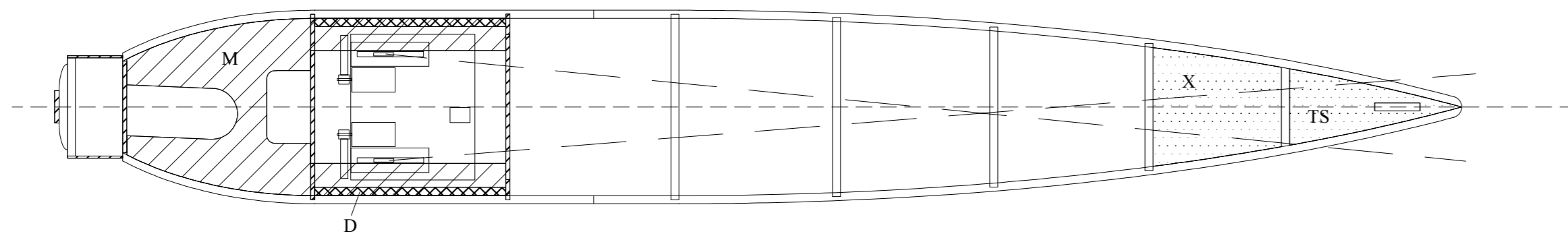
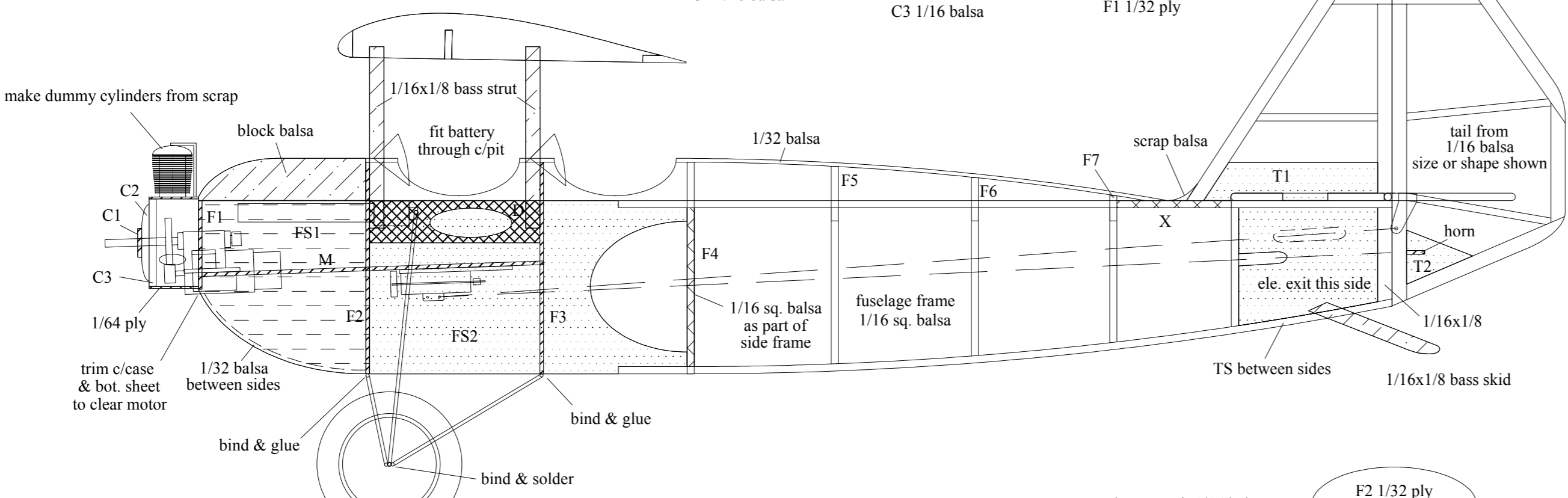


Peter Rake's
Sablier S12

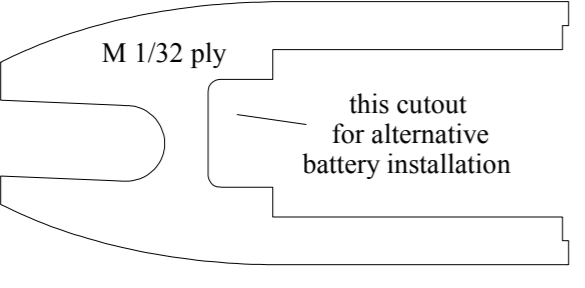
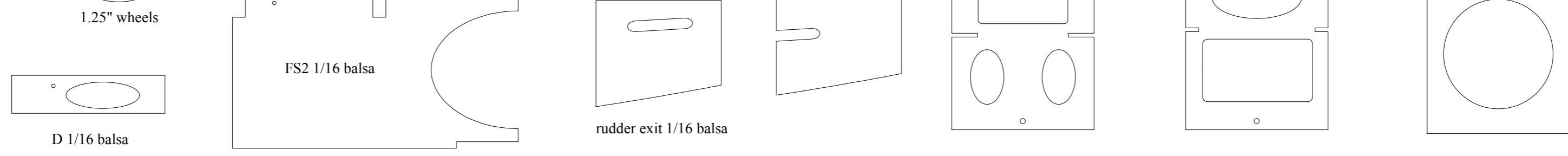
Copyright P. Rake 2015



equipment shown
Vapor Rx brick
PZ 8.5mm motor unit

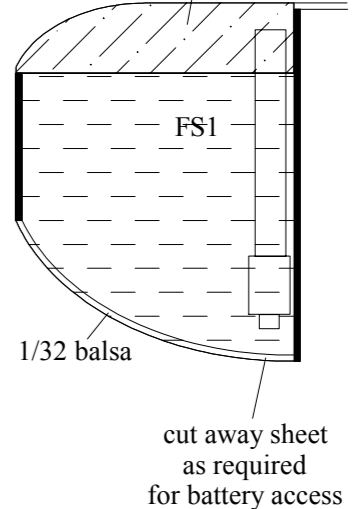


FS1 1/16 balsa shown actual size grain is vertical to assist curving

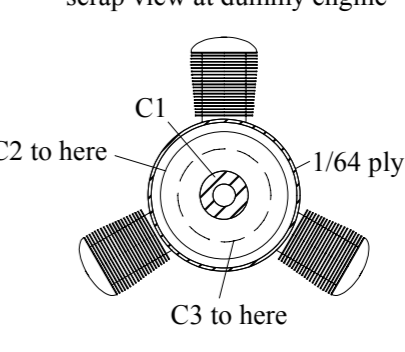
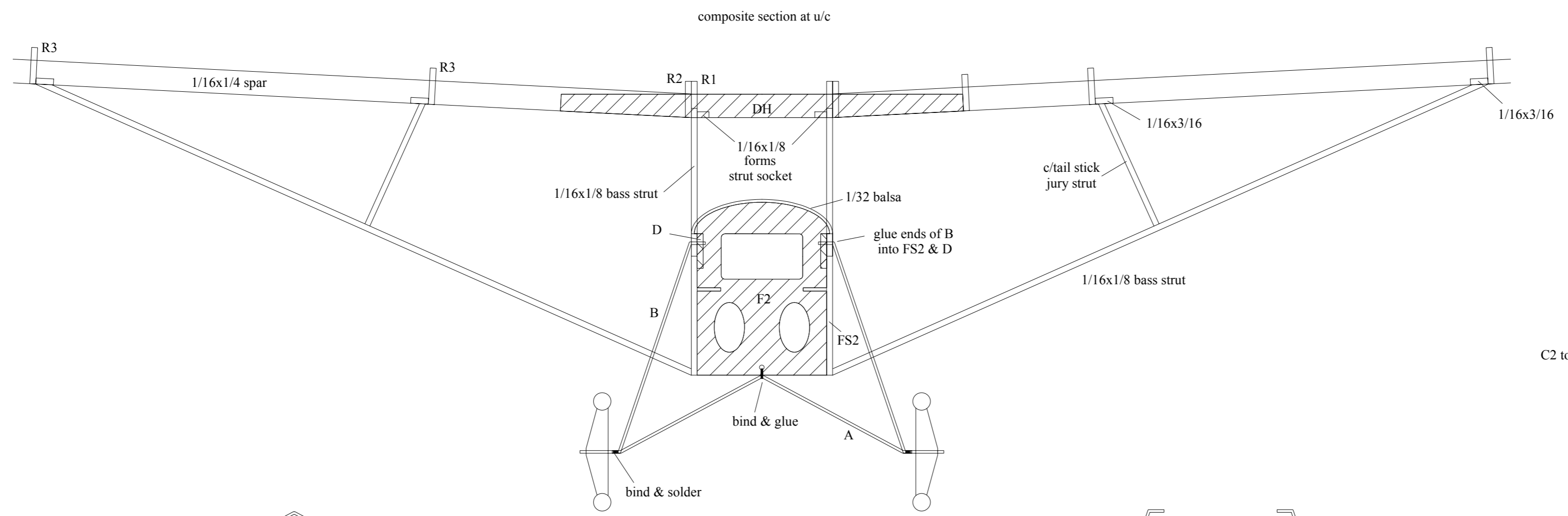


alternative battery installation

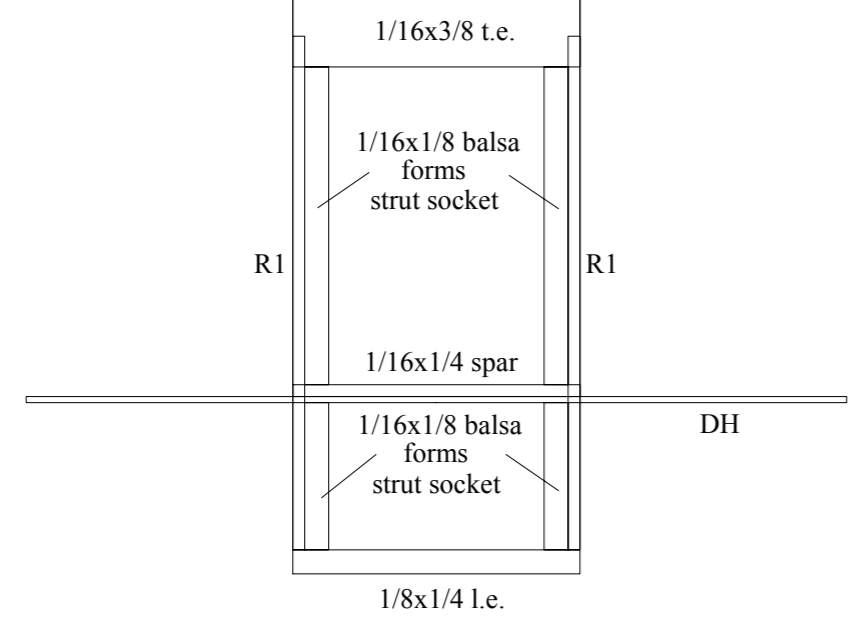
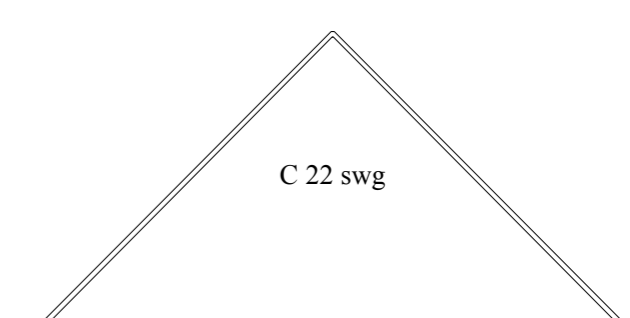
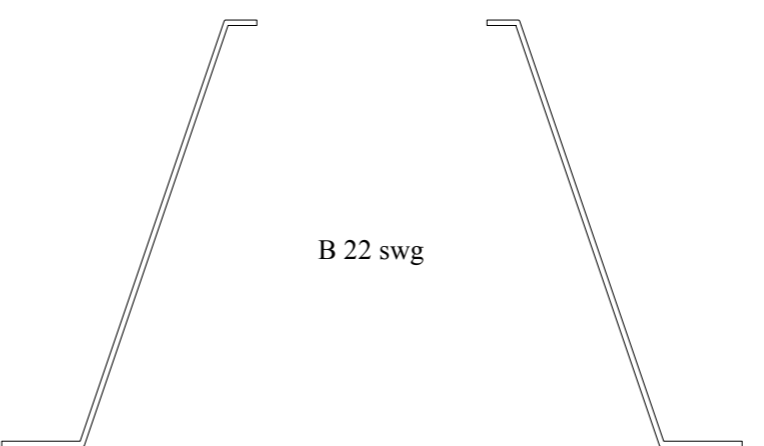
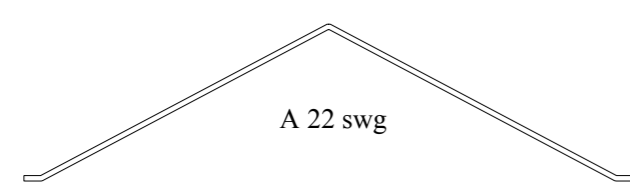
block balsa may form hatch with more compact batteries



cut away sheet as required for battery access

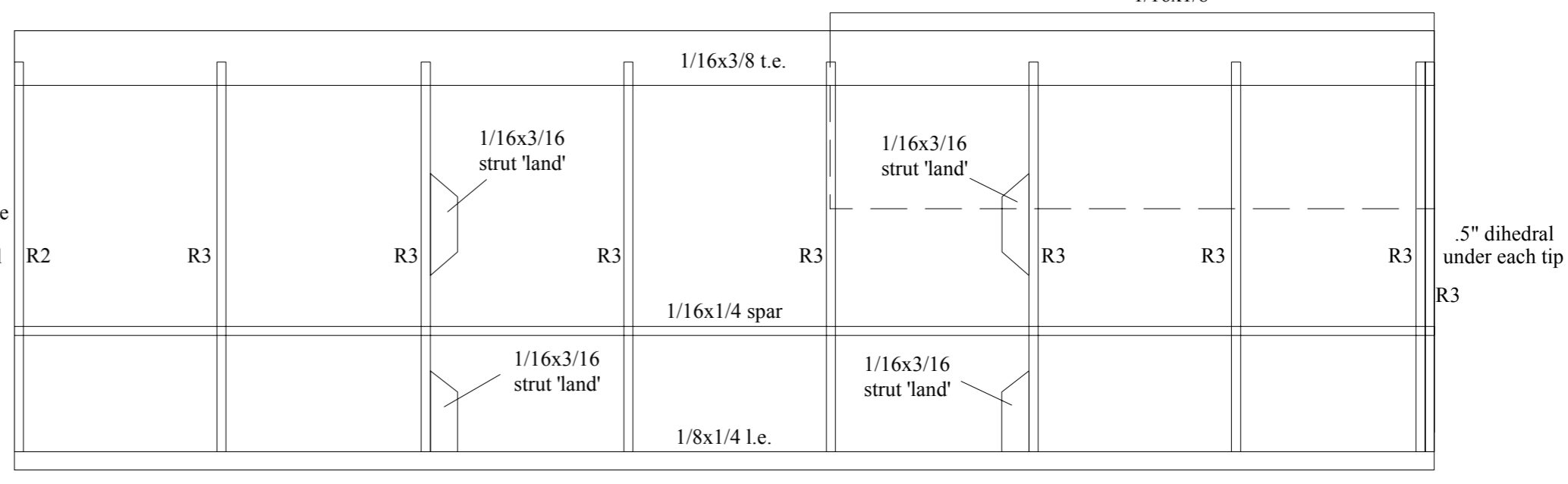


scrap view at dummy engine

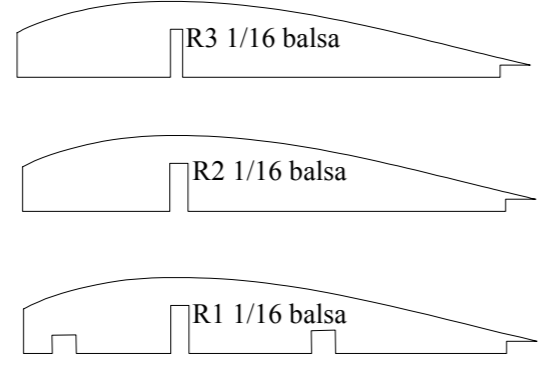


DH 1/32 ply

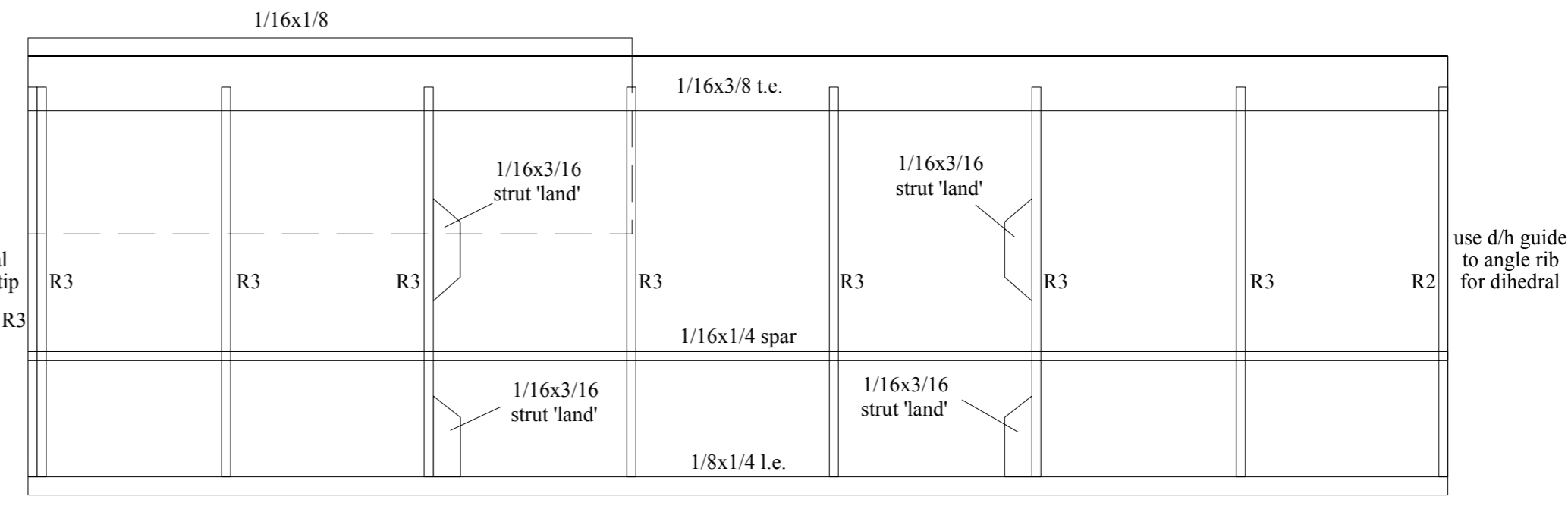
use d/h guide to angle rib for dihedral



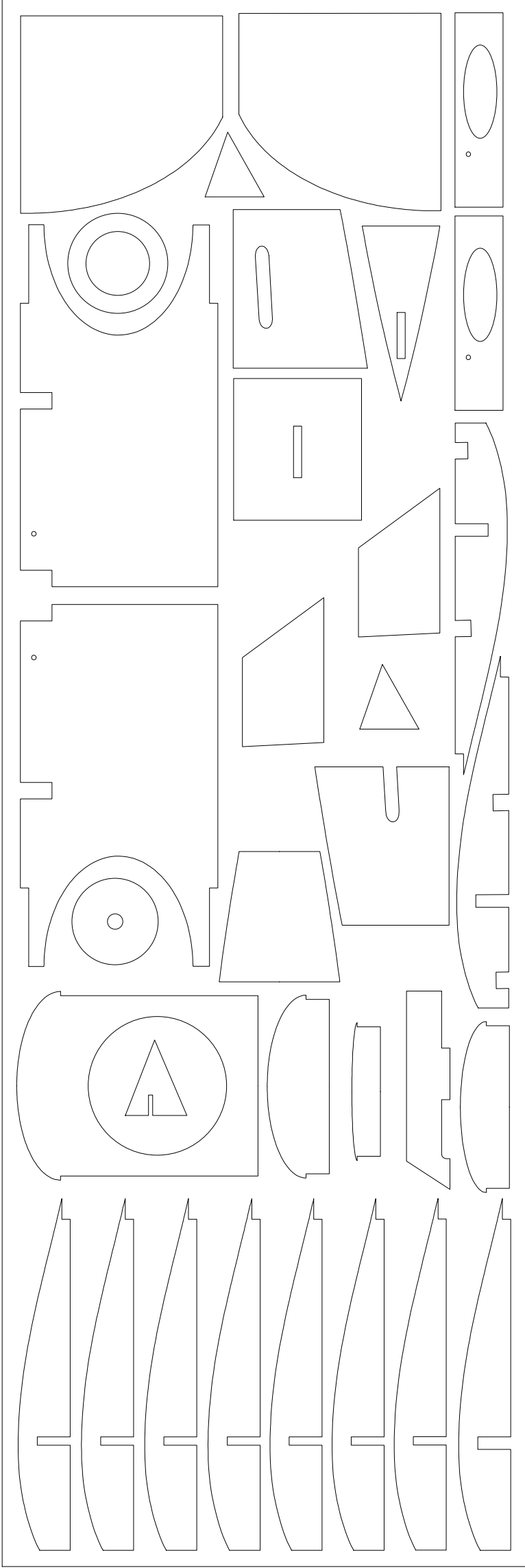
dihedral angle guide 1/16 balsa



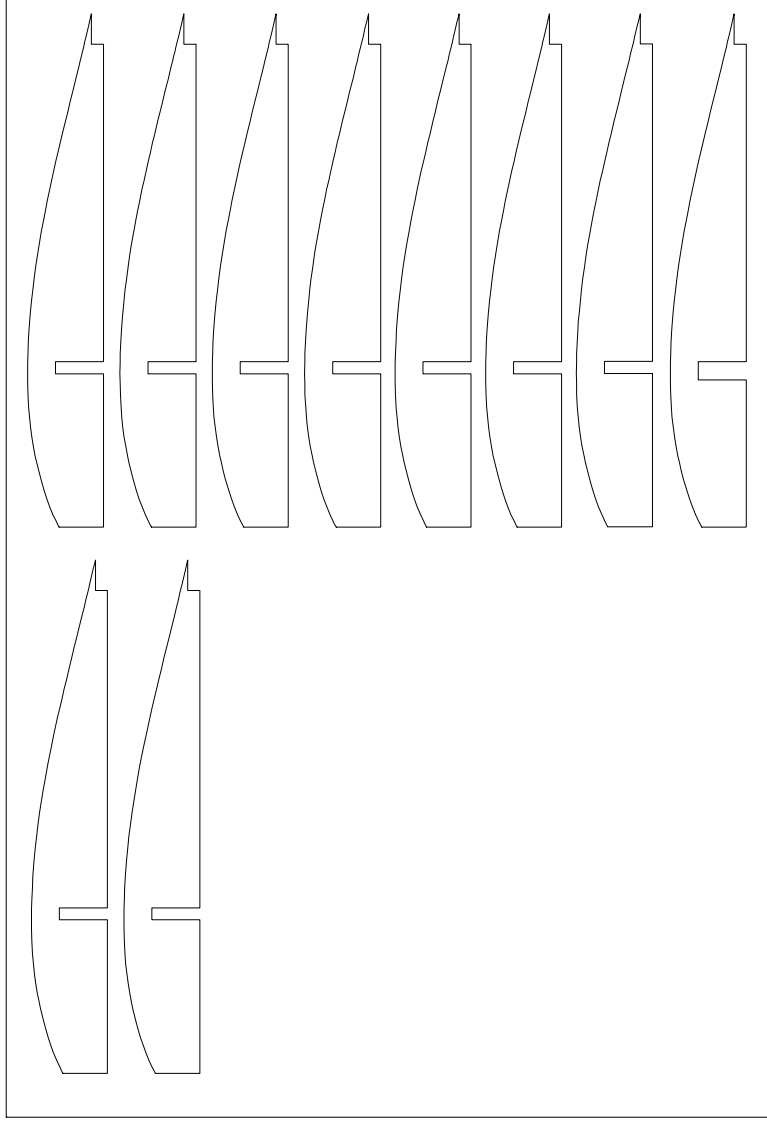
5° dihedral under each tip R3



1/16 balsa



1/16 balsa



1/32 ply

