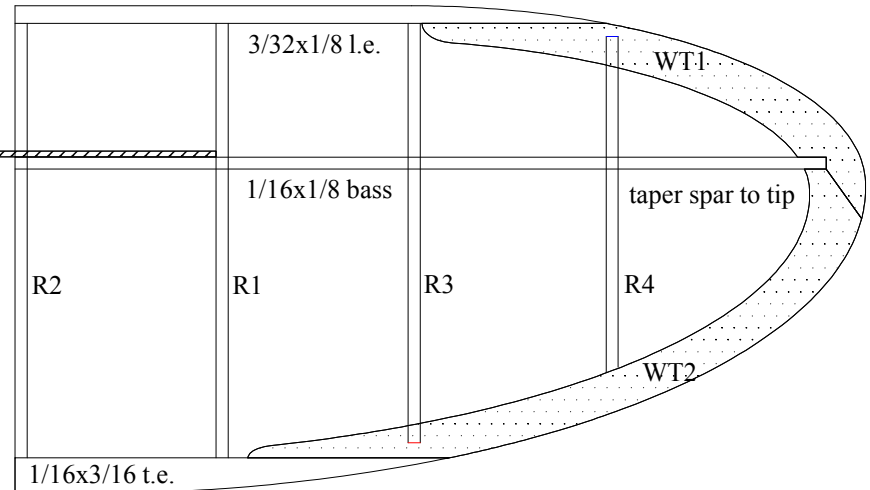
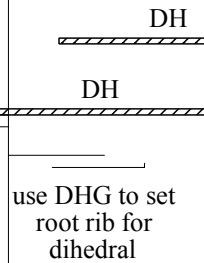
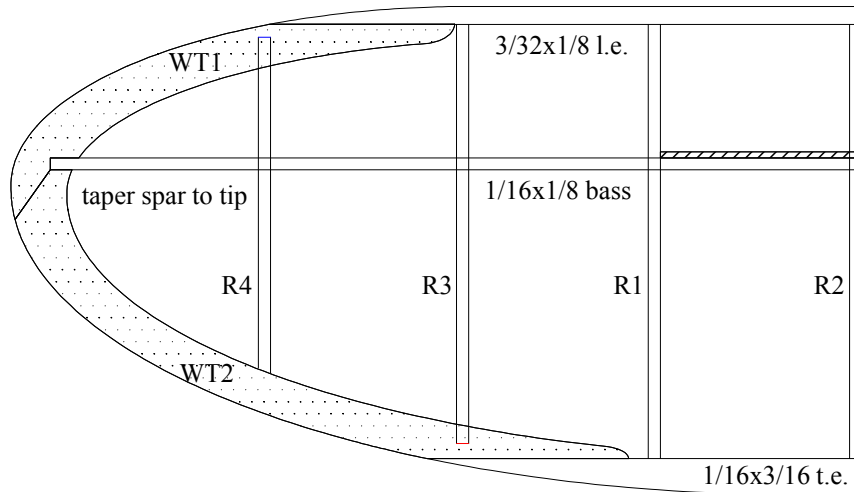
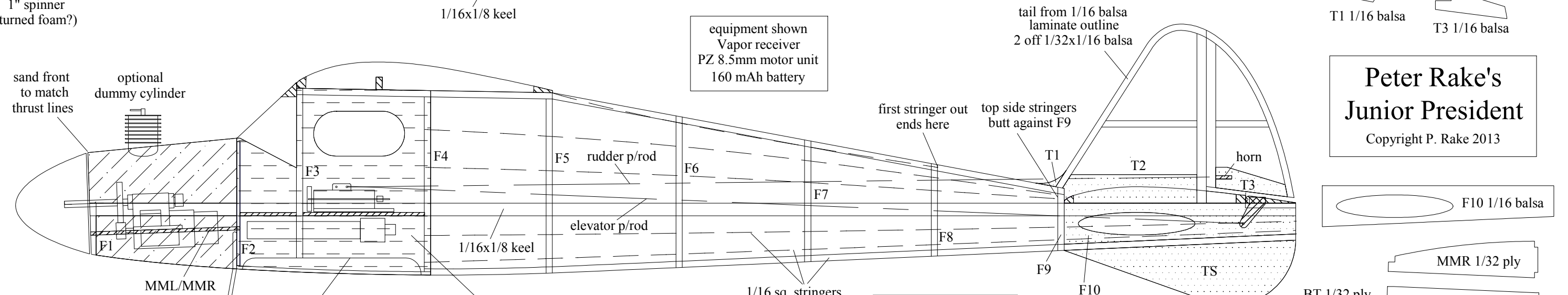
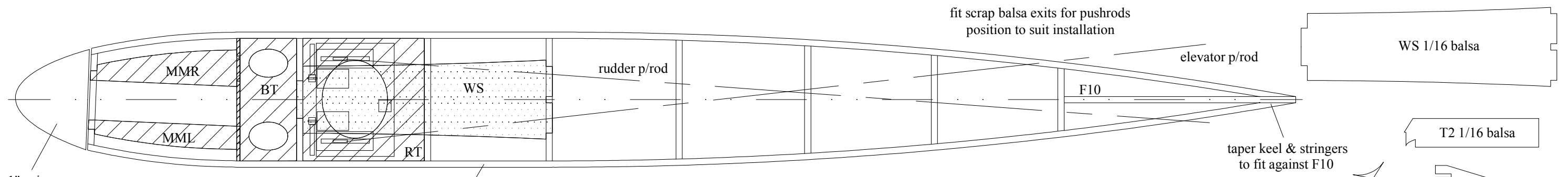
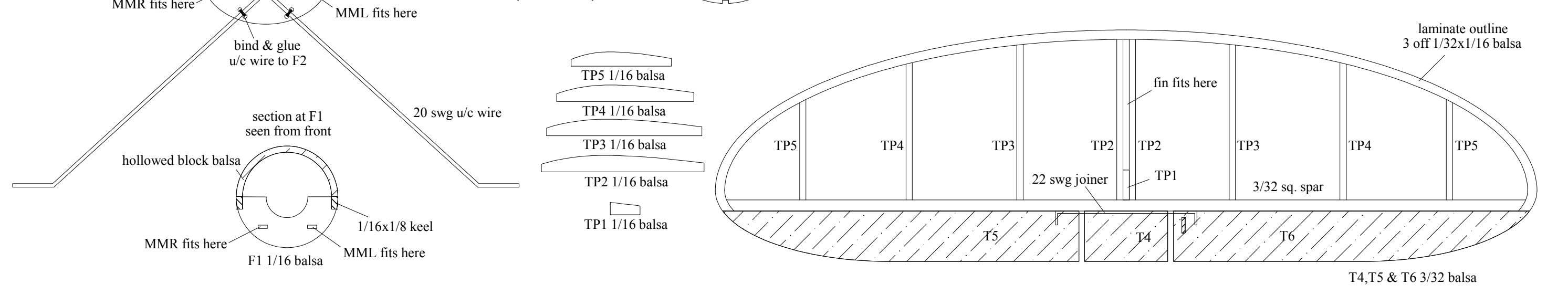
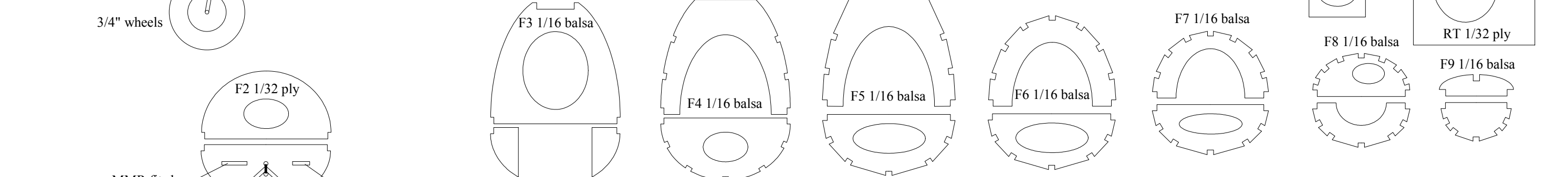
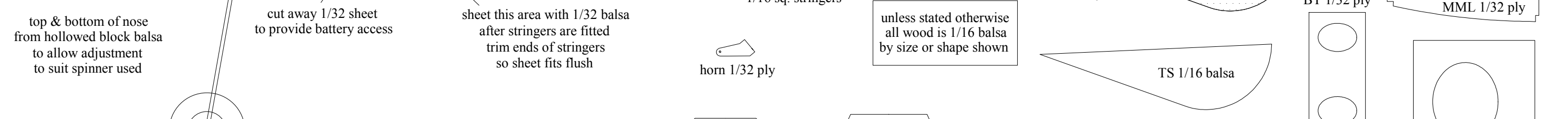


**Peter Rake's
Junior President**
Copyright P. Rake 2013





**Peter Rake's
Junior President**
Copyright P. Rake 2013



MMR fits here, MML fits here, bind & glue u/c wire to F2, section at F1 seen from front, hollowed block balsa, MMR fits here, 1/16x1/8 keel, F1 1/16 balsa, MML fits here, 20 swg u/c wire, 22 swg joiner, fin fits here, TP2, TP3, TP4, TP5, 3/32 sq. spar, T5, T4, T6, T4, T5 & T6 3/32 balsa, laminated outline 3 off 1/32x1/16 balsa