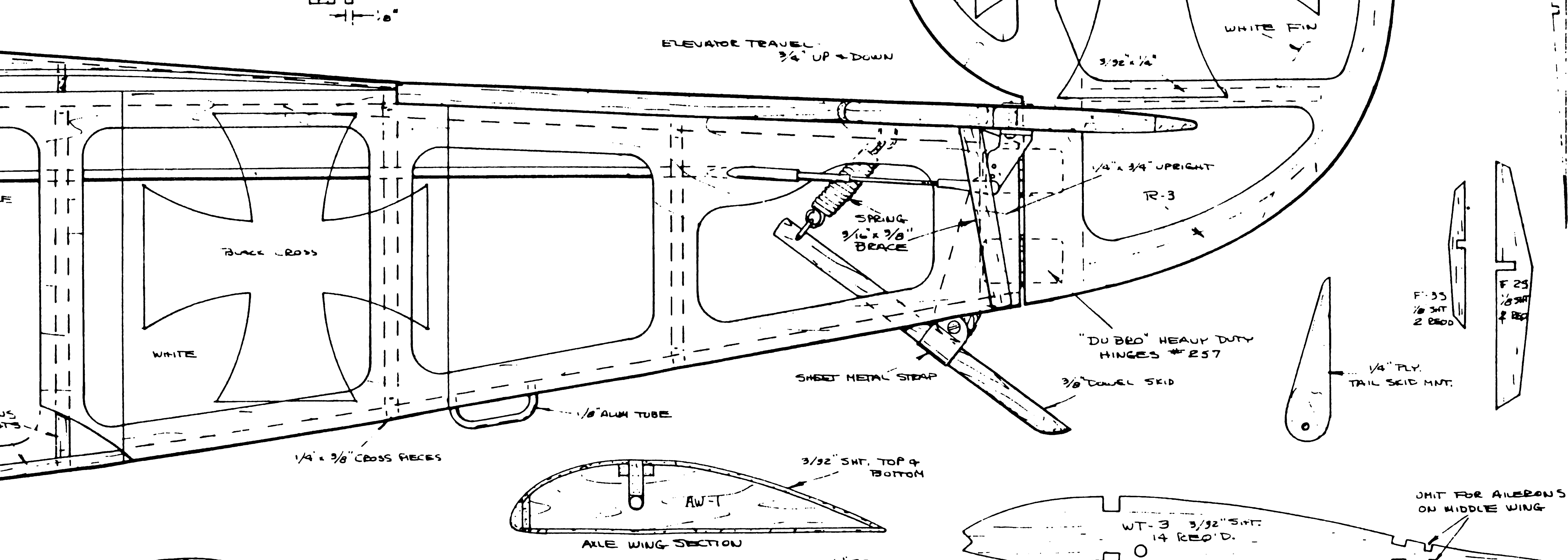
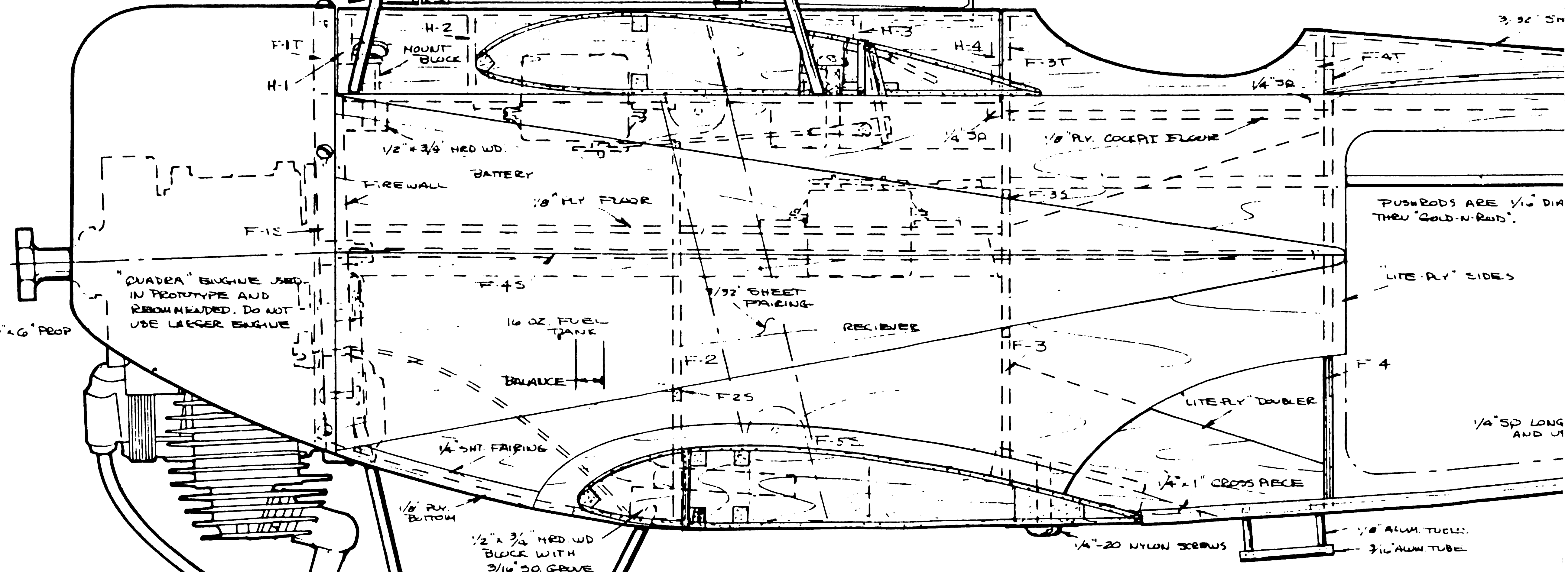
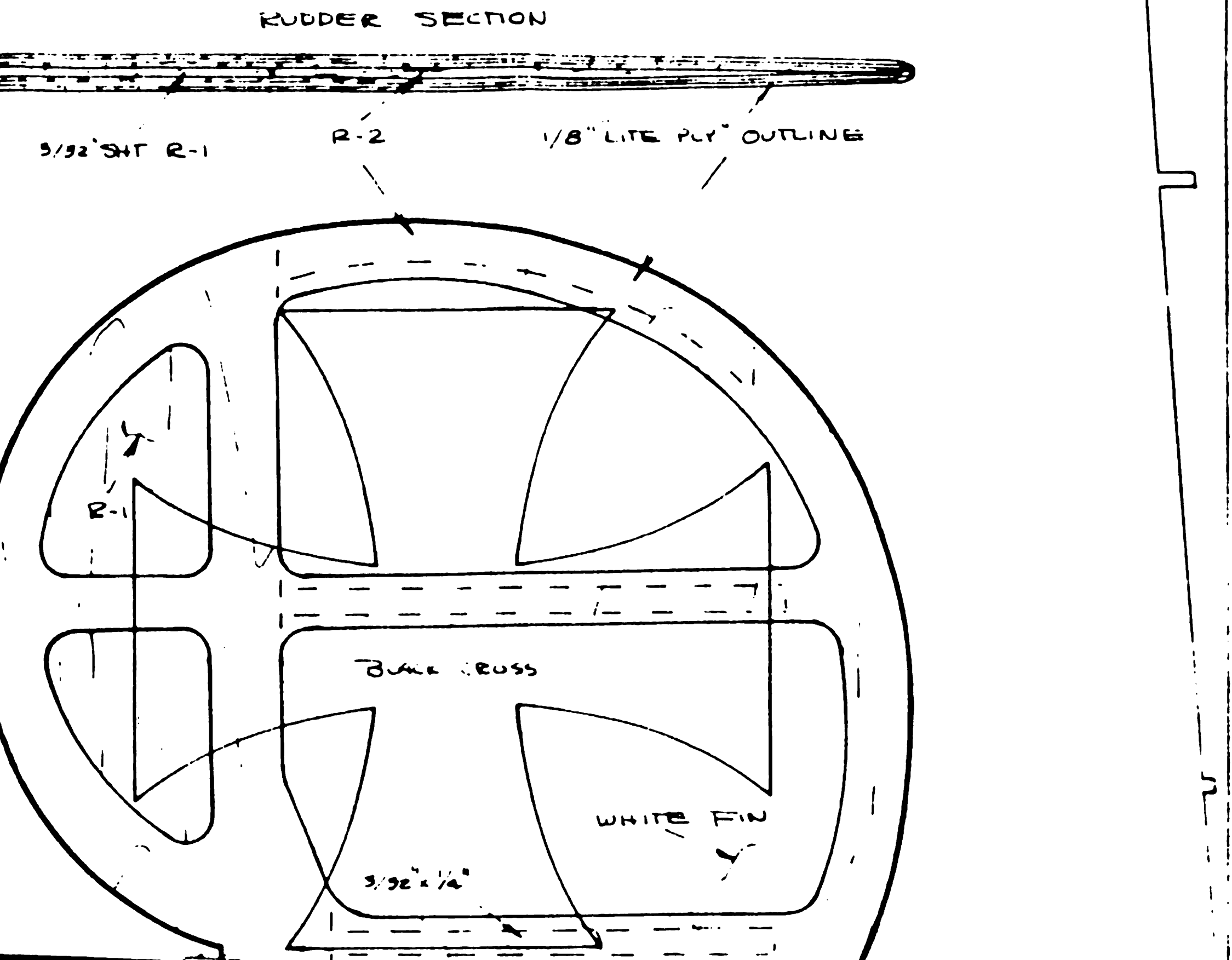
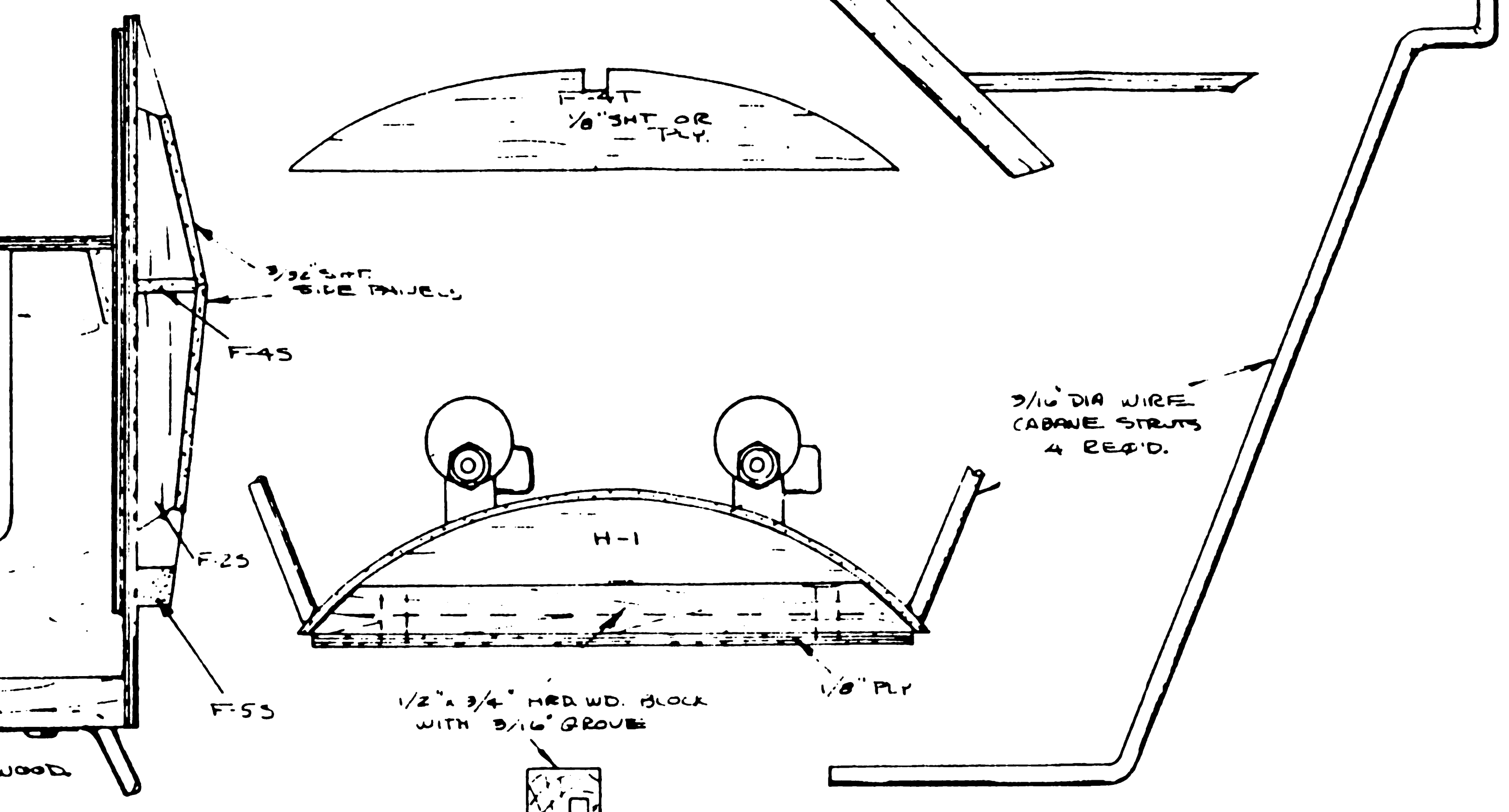
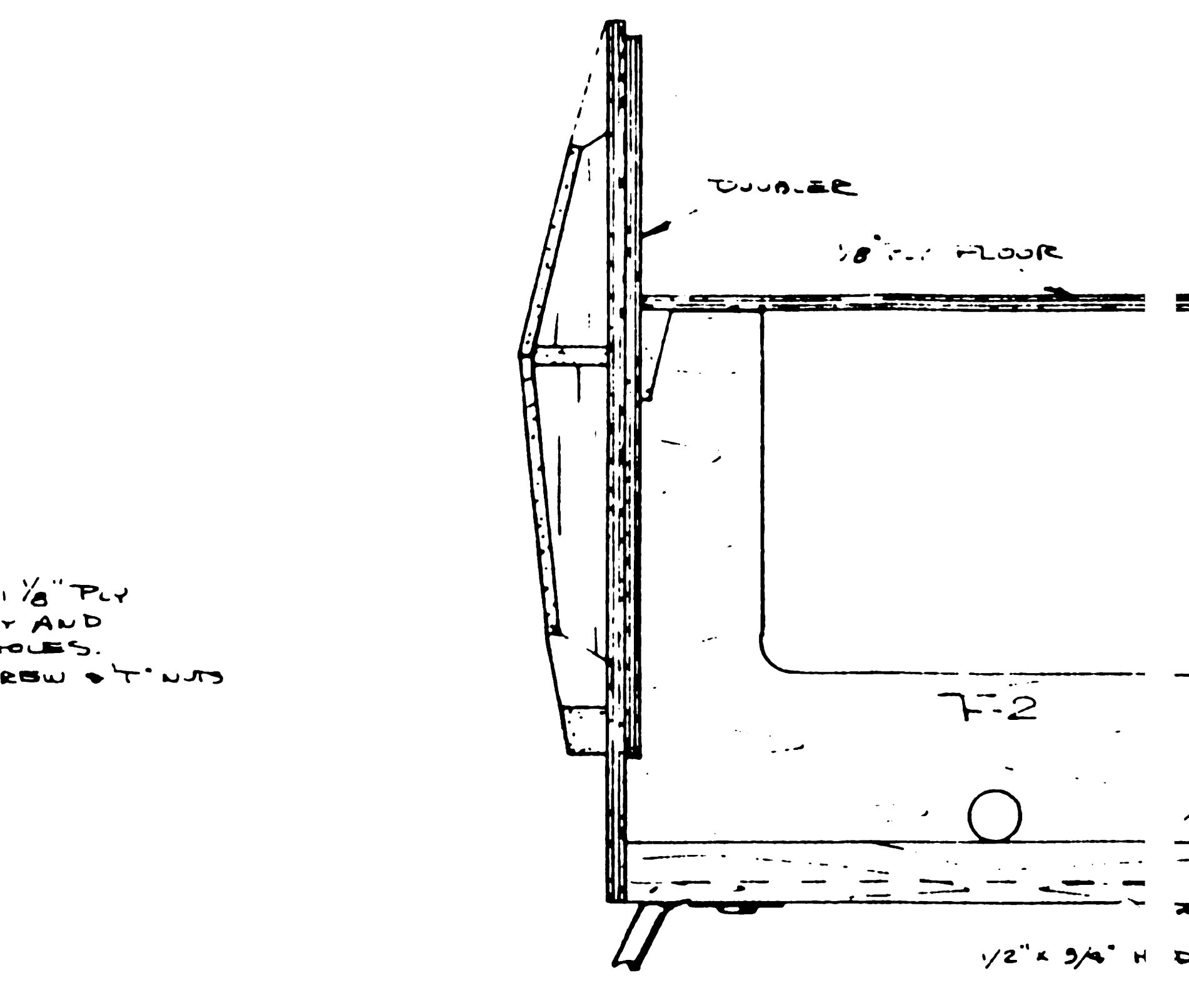
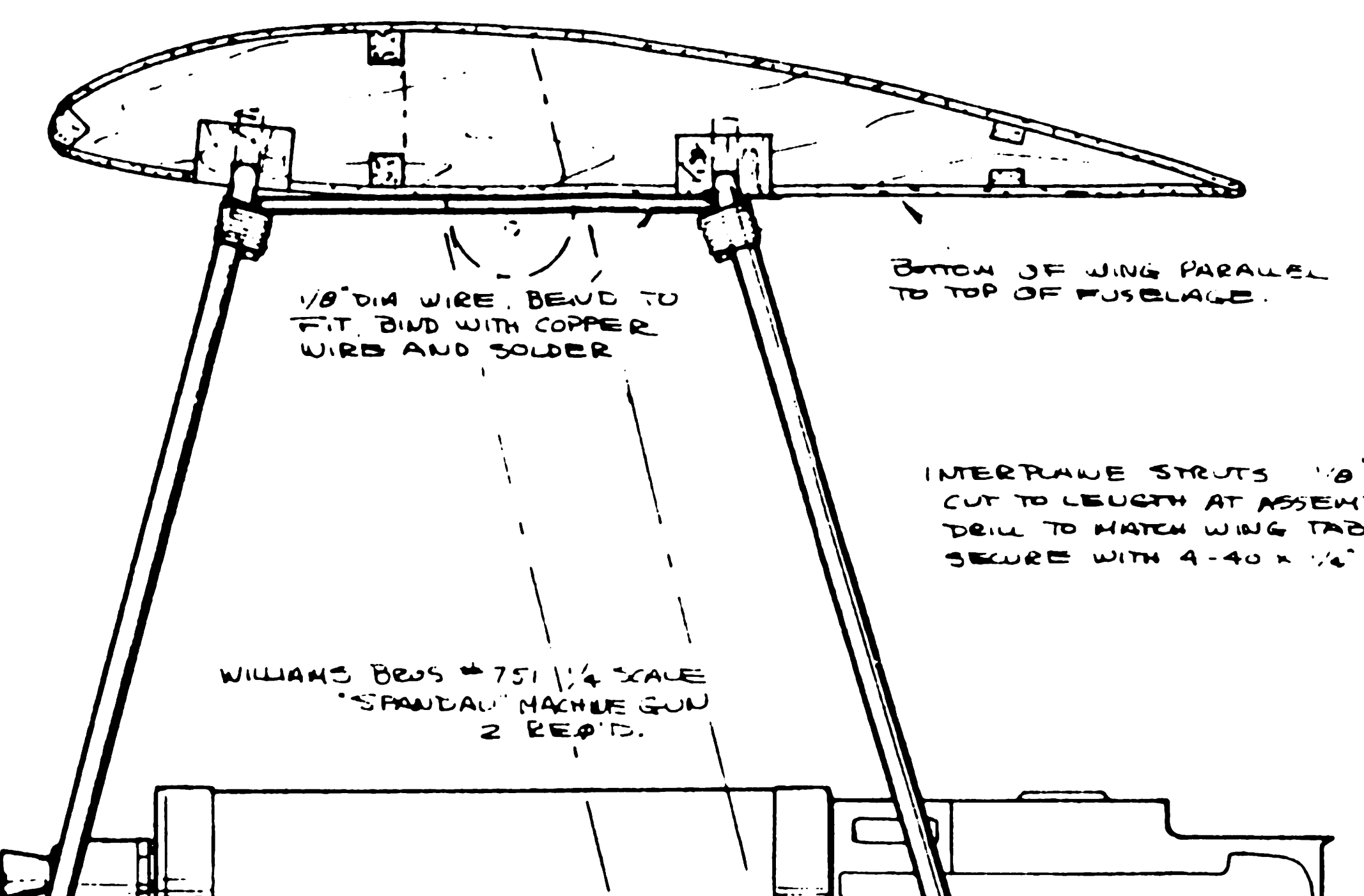
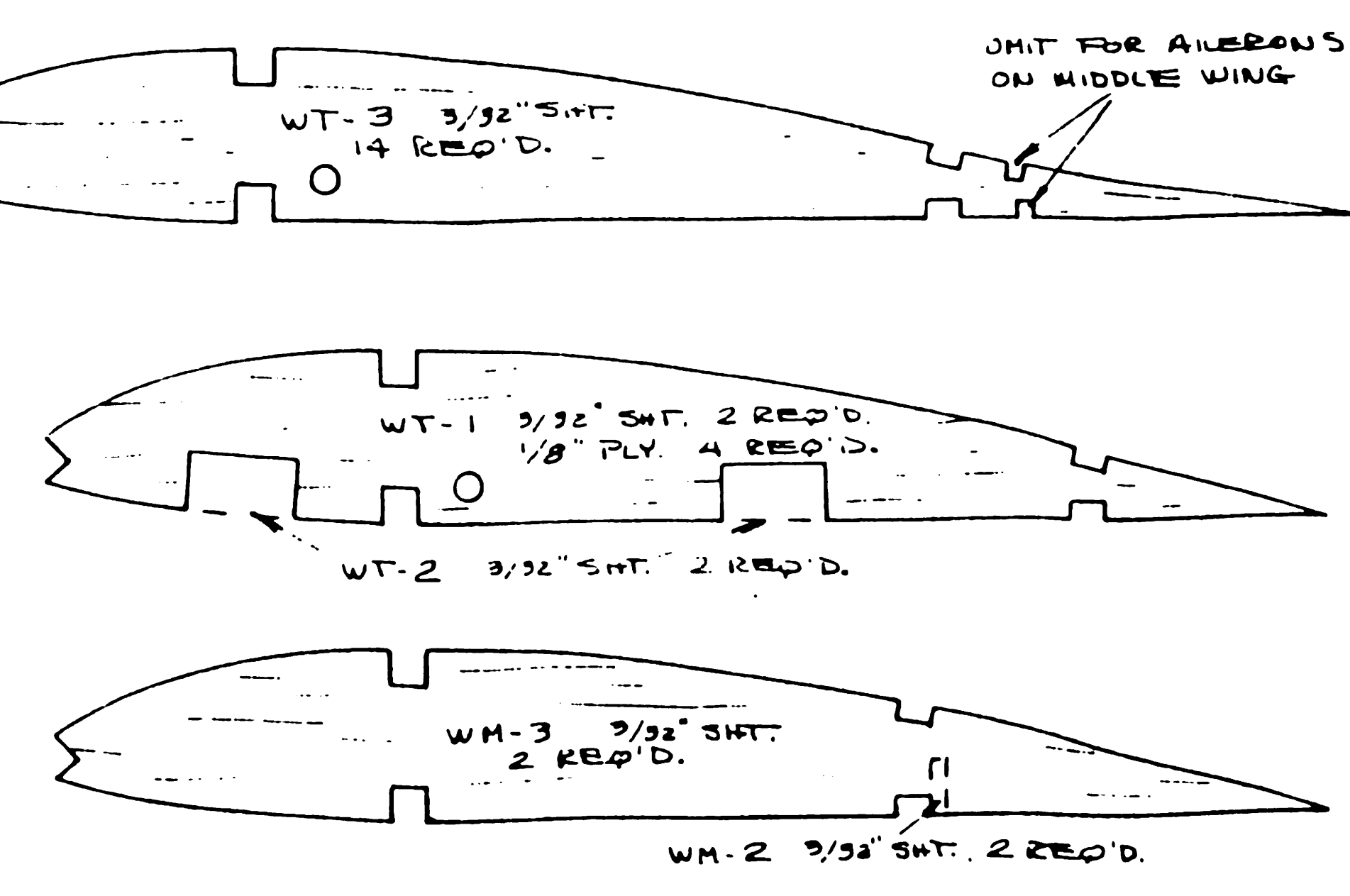
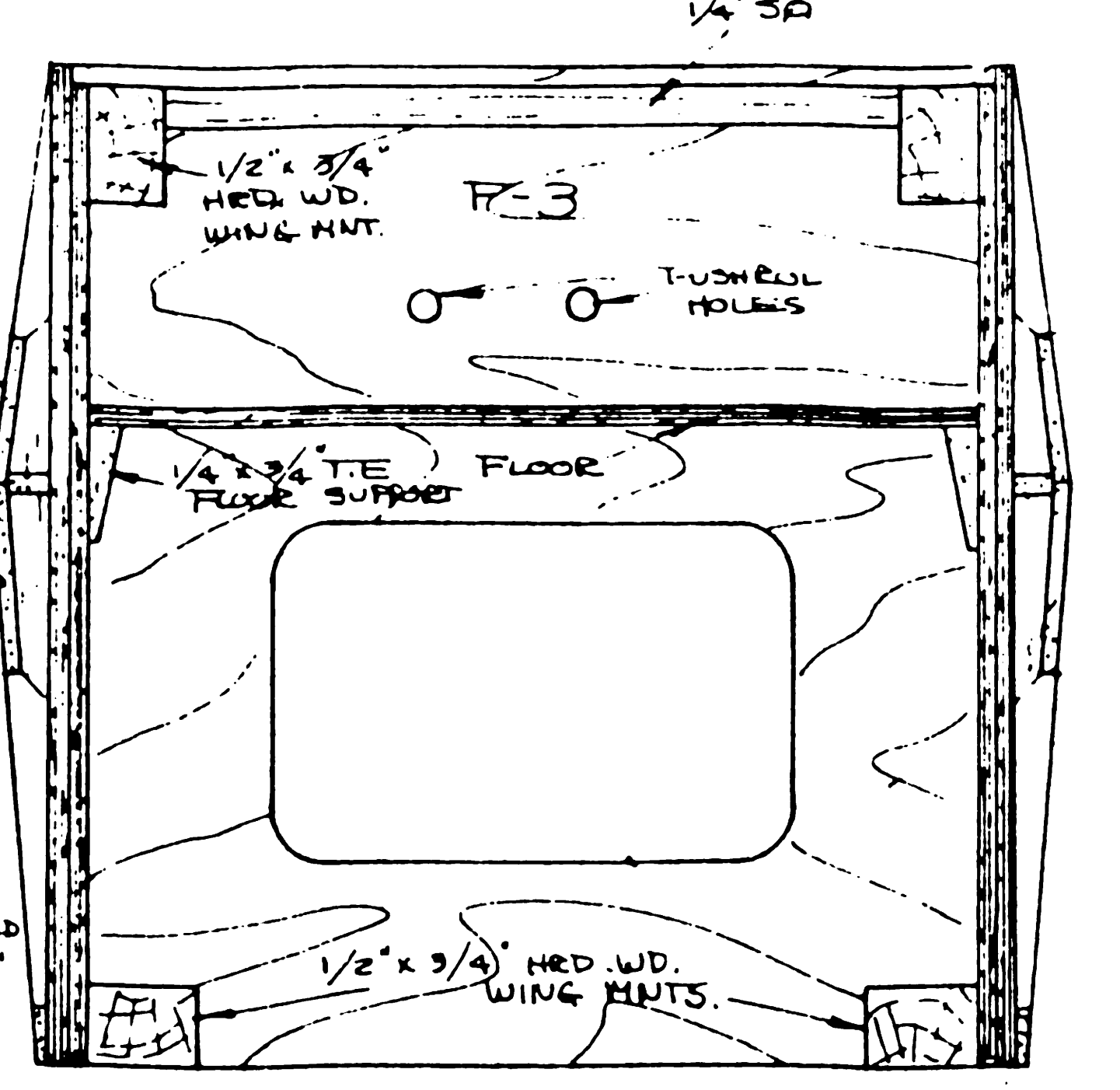
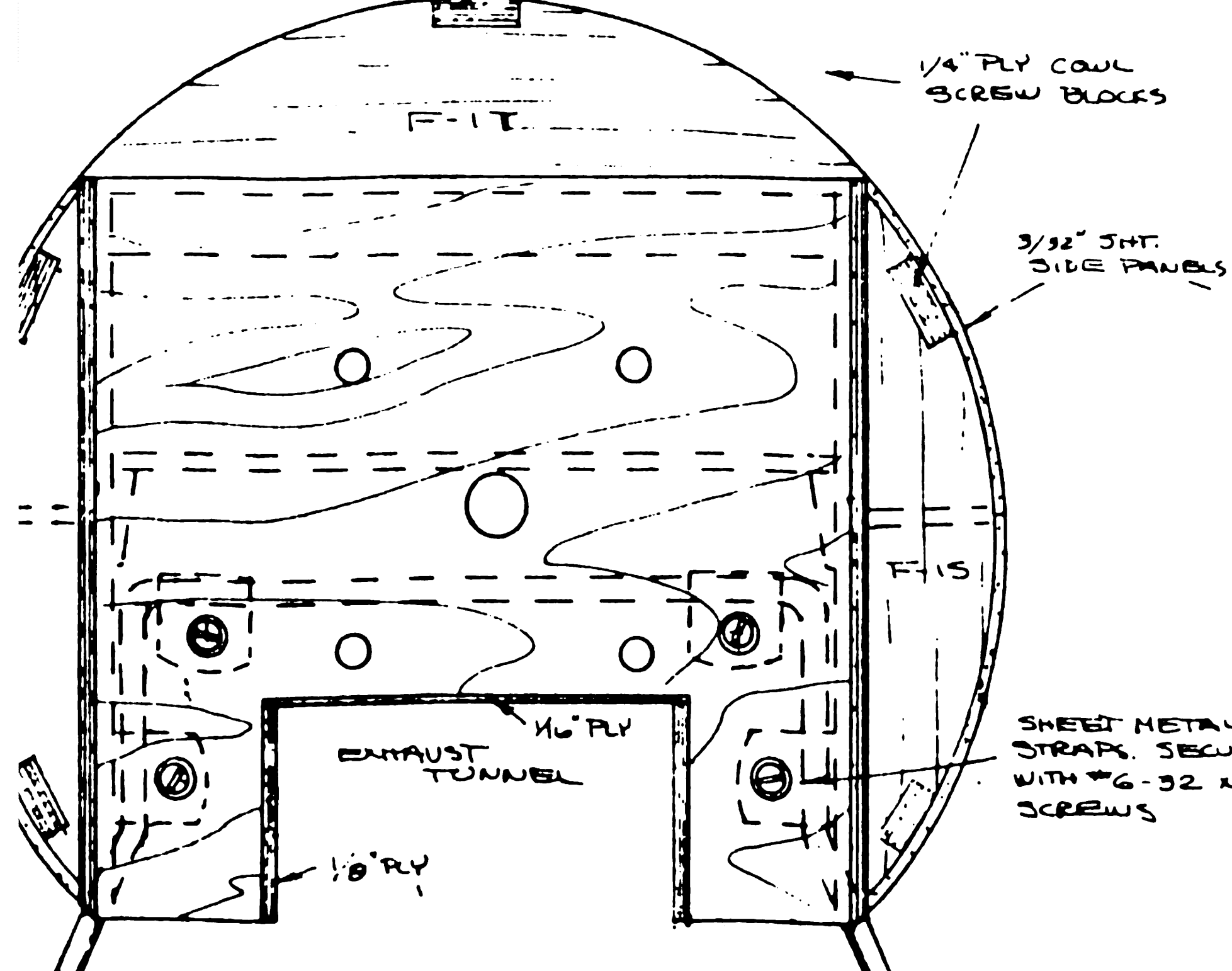


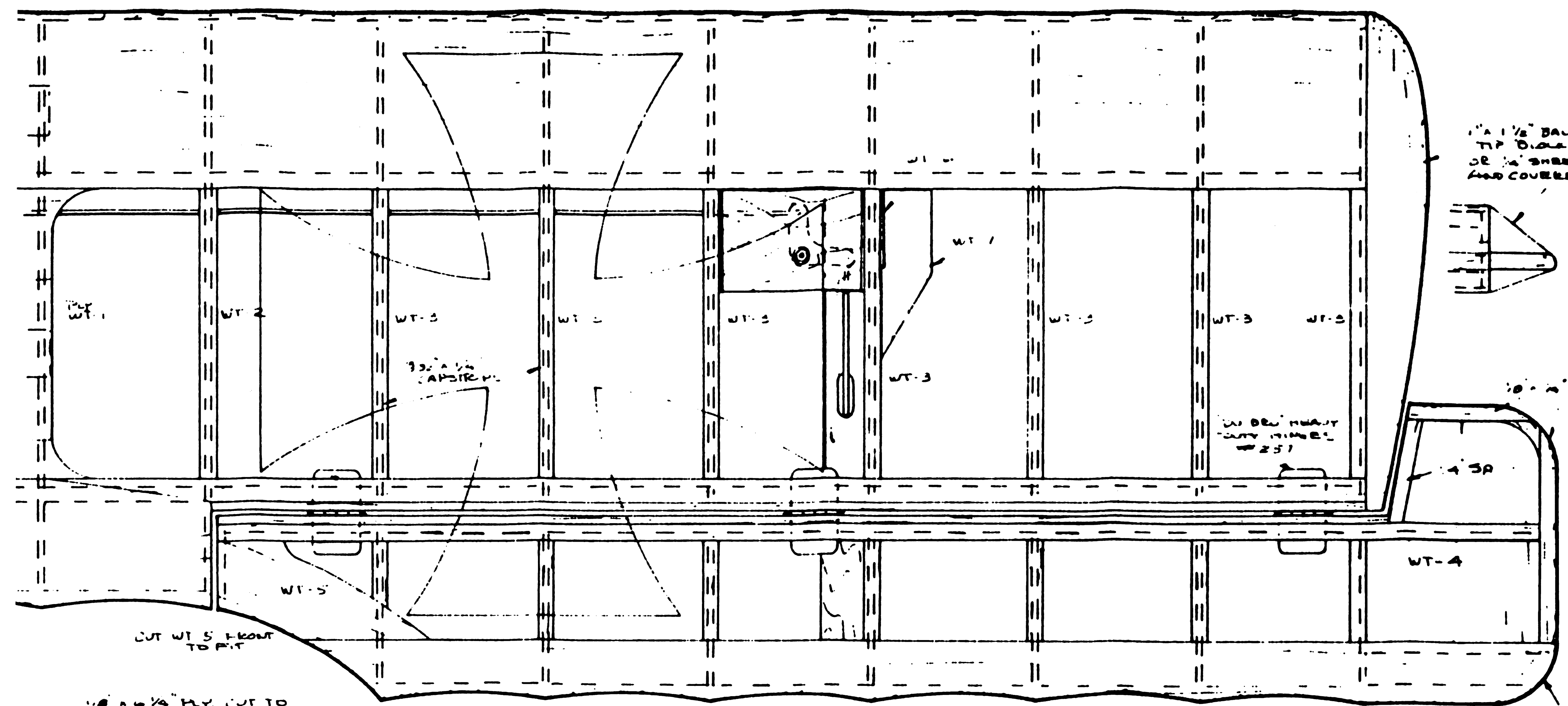
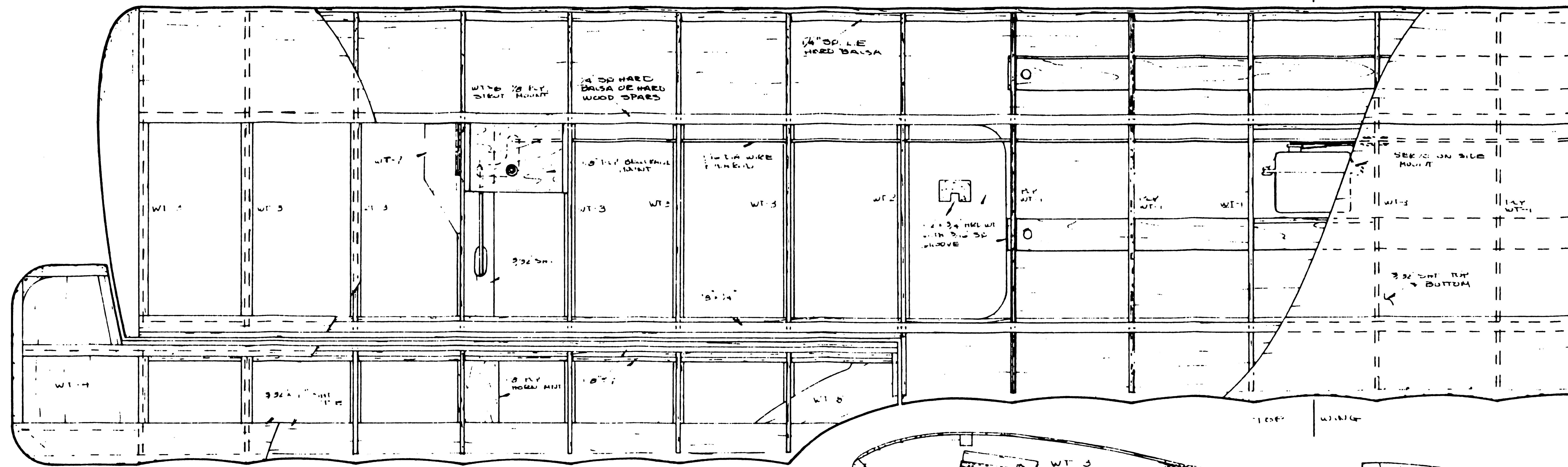
CAUL IS MADE FROM A "CHILD" 6 FT SQUARE SAUCE PAN. OTHER POTS OF 8 3/4 TO 1" DIA MAY ALSO BE USED.



FUSelage
 CUT OUT SIDES AND DOUBLES FROM 1/8" THICK PLYWOOD OR SIG LITE PLY OR SIMILAR MATERIAL. GLUE DOUBLES TO EACH SIDE BEING SURE TO MAKE ONE LEFT AND ONE RIGHT. NOTE THAT THE RIGHT SIDE DOUBLER IS SHORTER THAN THE LEFT. USE THE FRONT TABS FOR ALIGNMENT. ADD THE 1/4" x 3/4" TIE STOCK FLOOR SUPPORT TO EACH DOUBLER 2 1/4" FROM EDGE. GLUE 1/4" x 3/4" LONGSCREWS AND SPACERS TO EACH SIDE. JOIN THE SIDES WITH THE FIREWALL, F-2, F-3 AND F-4. IT MAY BE DONE WITH THE FUSelage INVERTED ON A FLAT SURFACE. ALL THAT IS THEN REQUIRED IS TO SQUARE ACROSS THE FRONT FROM SIDE TO SIDE. THE FIREWALL SHOULD BE AT AN ANGLE. INSTALL THE 1/8" PLY FLOOR. TAPSE 1/4" x 3/4" BEAR UPRIGHT, FULL SIDES TOGETHER AND GLUE AT THE J. ADD CROSSPIECES. BEND LANDING GEAR STRUTS TO SHAPE AND INSTALL. THE FRONT STRUT IS HELD TO THE FIREWALL WITH STRAPS AND #6-32 SCREWS. THE REAR INTO THE GROOVED BLOCK WITH METAL PLATES AND 1/2" x 3/4" SHEET METAL SCREWS. BIND STRUTS TO THE 7/8" DIA ANGLE AND SOLDER SECURELY. GLUE SIDE BRACING PARTS, F-1, F-2, F-3 AND F-4 IN PLACE IN THAT ORDER. ADD THE 3/32" SHEET SIDE DOUBLES. SIMILARLY INSTALL THE TOP SHEETING OVER RIBS, F-1, F-2, F-3 AND F-4. F-5 AND 1/4" FACING ARE GLUED IN PLACE AND FAIRED IN. EPOXY WING AND STRUT HOLD DOWN BLOCKS IN PLACE. INSTALL STRAPS AND PUSHRODS. COVER FUSelage, STABILIZER AND RUDDER. INSTALL TAILSEID AND HINGE RUDDER. COMBINE WING AND EPOXY IN PLACE ON ANGLE SHOWING. BLOCK IN AT STRUTS AND FILL FLUSH INCLUDING ANGLE GROOVE. INSTALL WHEELS, ENGINE AND CAUL.



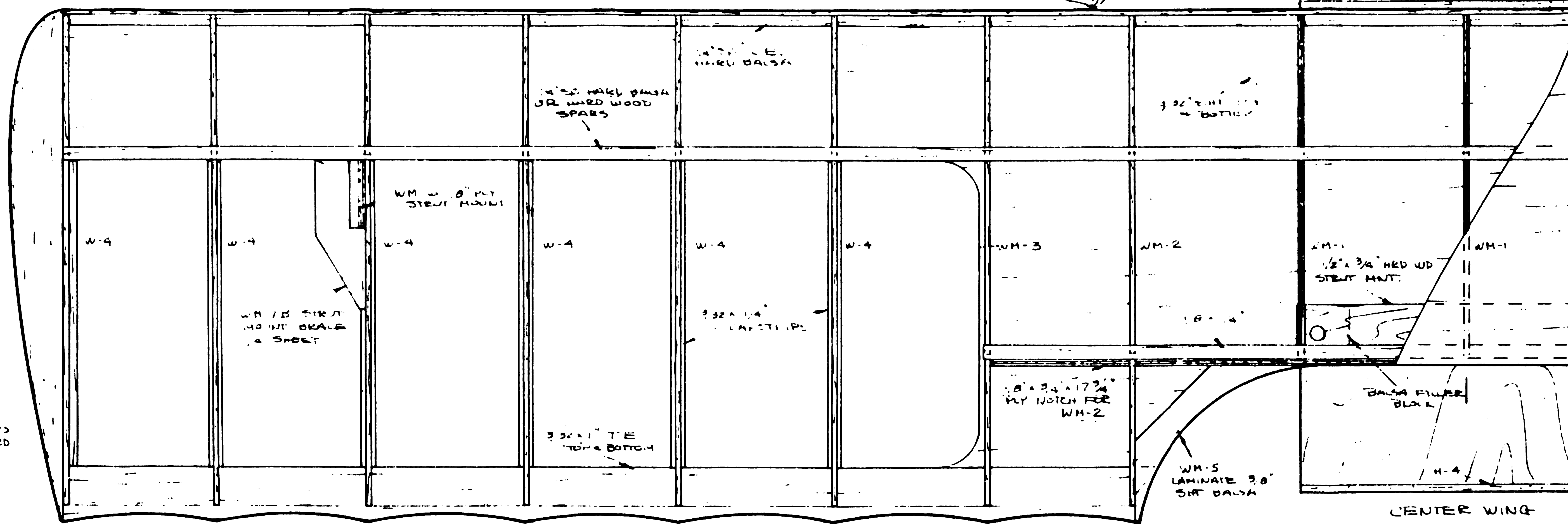
FOKKER DR-1
 WW-1 TRIPLANE GIANT
 STAND-OFF SCALE 1/4" MODEL
 DESIGNED & DRAWN BY - **NICK ZIROLI**
 29 EDGAR DR.
 SMITHTOWN, N.Y. 11787



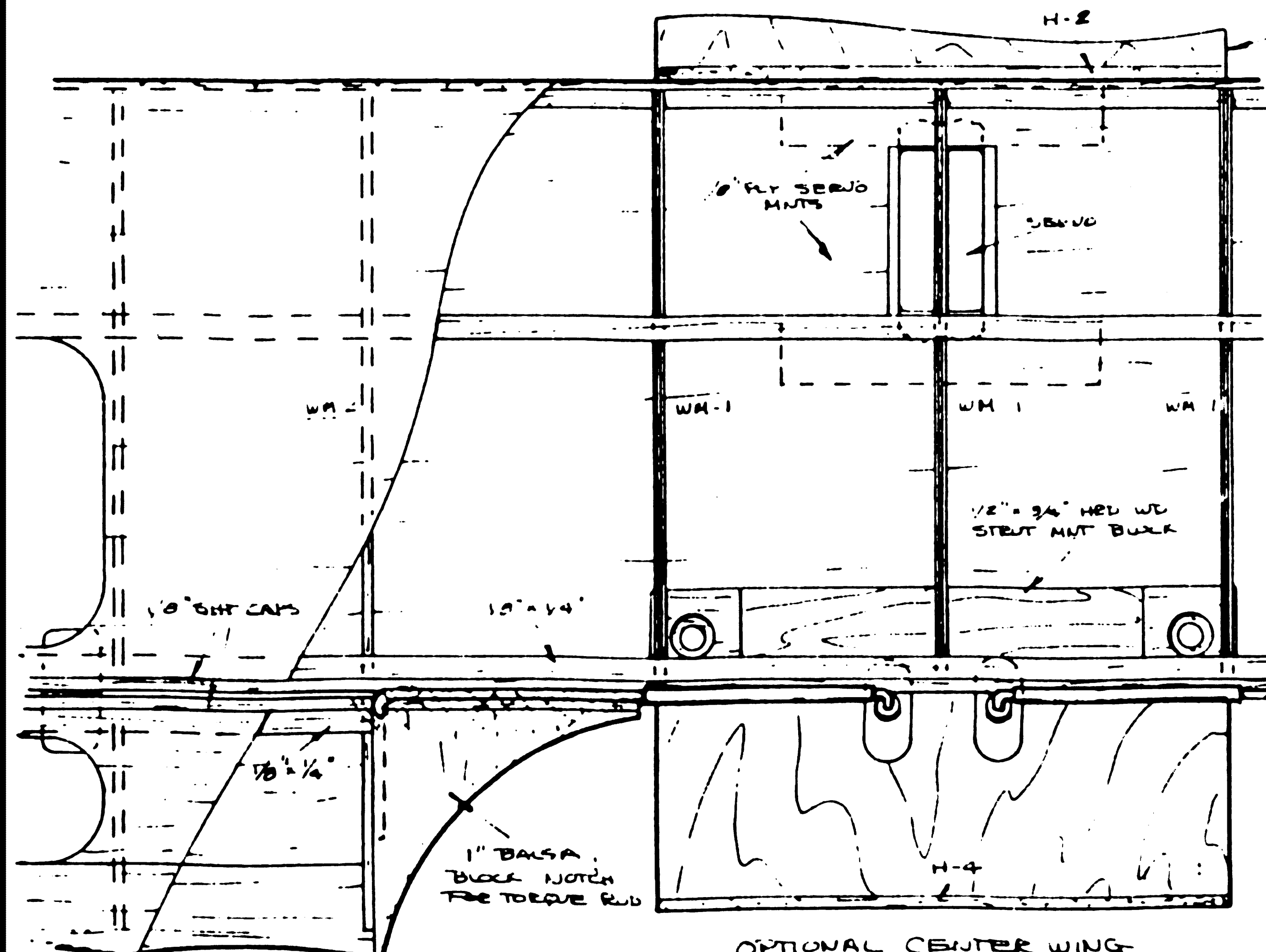
WINGS

ALL THREE WINGS ARE BUILT IN THE SAME MANNER. EACH IS BUILT IN ONE PIECE THAT IS CURVED. ALTERNATE MAY BE BUILT INTO THE TOP WING FOR BEST SCALE APPEARANCE OR INTO THE CENTER WING FOR STAY-INS. MAKE A 3/32" SINK UNDER EACH BOTTOM SPAR AND RUN TO PLAN. FOR 3/32" x 1" TRUSSING (WING WT-5 AND 3/32" x 2" TOP WING CENTER SECTION) TO "PLAN" OVER RIBS IN PLACE. ALL LEADING EDGES, TOP SPARS AND TOP SPREADS, REMOVE WING FROM PLAN AND ADD ANY MISSING BOTTOM SPARS, PLYWOOD JOINTERS AND HARD WOOD MOUNT BLOCKS. SAND LIE TO FOLLOW RIB CONTOUR BOTTOM WITH 3/32" SHEET IN AREAS SHOWN. ADD ALBEROU BELLSHANE MOUNTS, BELLSHANE AND SERVO PUSH RODS IF SCALE ALBEROU ARE BEING USED. INSTALL 3/8" DOWEL WD 1/3" AND MOUNTING STRIPS (FLYER BLOCKS) TO BOTTOM WING. CHECK ALL TOP SPARS AS SHOWN WITH 3/32" SHEET AND CORRECT TOP AND BOTTOM. ADD TIPS (ON MAIN ALBEROU TOP OR MIDDLE WING). CAP EDGES OF WING AND ALBEROU WITH 1/8" SHEET. CUT SLOTS FOR HUGES. DO NOT INSTALL UNTIL AFTER COVERING. EPOXY 1/8" PLY SHEET MOUNTS AND BRACES IN PLACE. SAND WINGS TO PREPARE FOR COVERING.

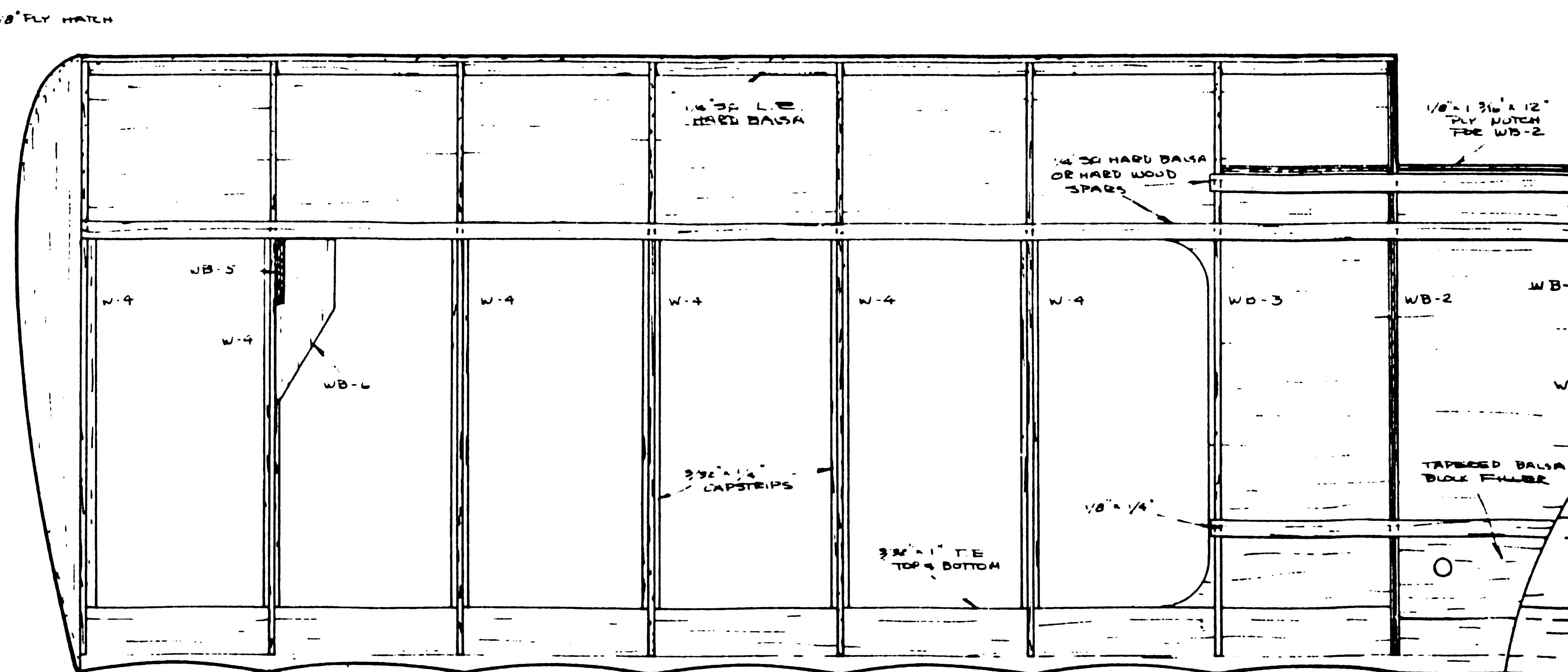
INSTALL REAR CABANE STEPS THE TOP SHEETING OF MIDDLE WING INTO STRUT MOUNT DASH GROOVE. EPOXY 1/8" PLY MOUNTING PLATE TO BOTTOM OF WING BEHIND CABANE STEPS. THIS SHOULD BE DONE WITH THE MOUNTING PLATE IN POSITION ON THE FUSELAGE SO WING CAN BE ACCURATELY ALIGNED. USE PLASTIC WEAR BETWEEN THE PLATE AND FUSELAGE TO KEEP FROM BEING STUCK TOGETHER. WITH WING OFF IN PLACE EPOXY FRONT CABANE STRUT BLOCK AND STRUTS IN PLACE. MAKE SURE STRUTS ARE AT CORRECT ANGLES TO MATCH TOP WING MOUNTS. FLAT AREA OF AIRFOIL SHOULD BE PARALLEL WITH TOP OF FUSELAGE. ADD FIBERGLASS AND COVER WITH 3/32" SHEET. DRILL 3/16" HOLES THROUGH CABANE MOUNT BLOCKS INTO WING MOUNT BLOCKS IN FUSELAGE. TAP FUSELAGE BLOCKS 1/8" x 20 AND OPEN UP HOLES IN CABANE BLOCKS TO 1/8" DIA. USE 4 NYLON 1/4" BOLTS.



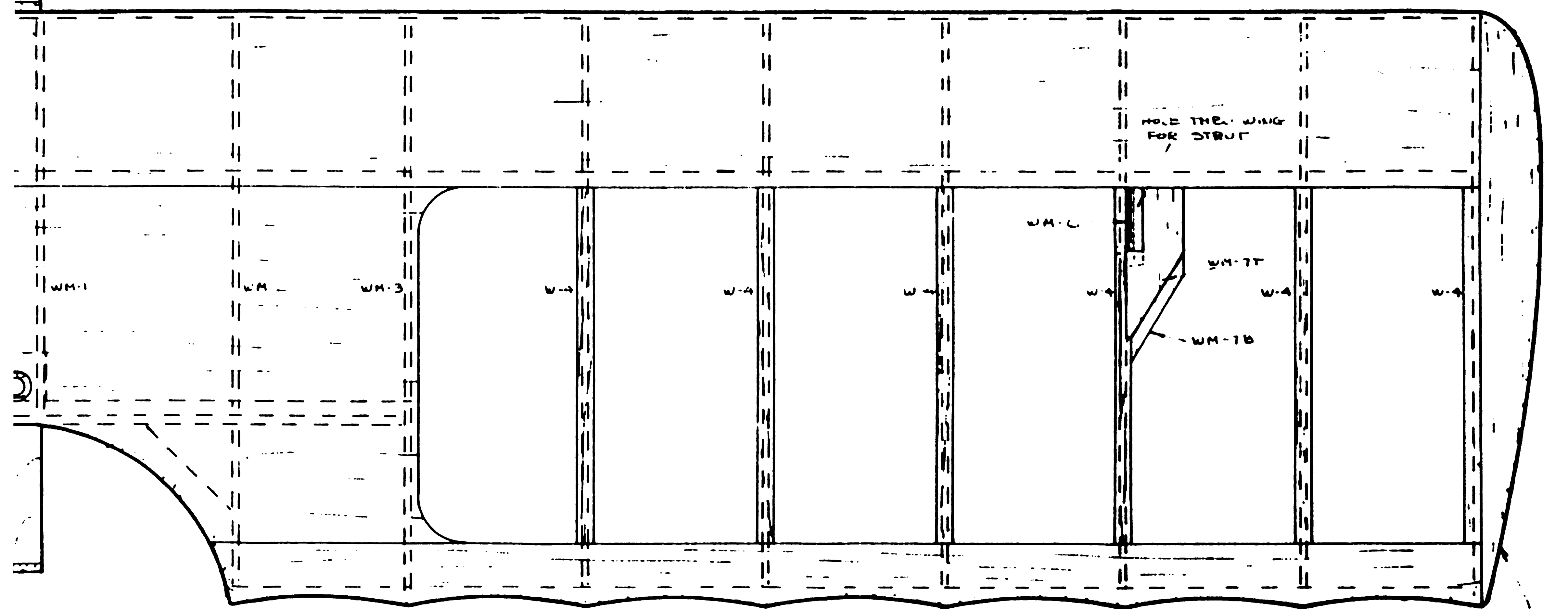
CENTER WING



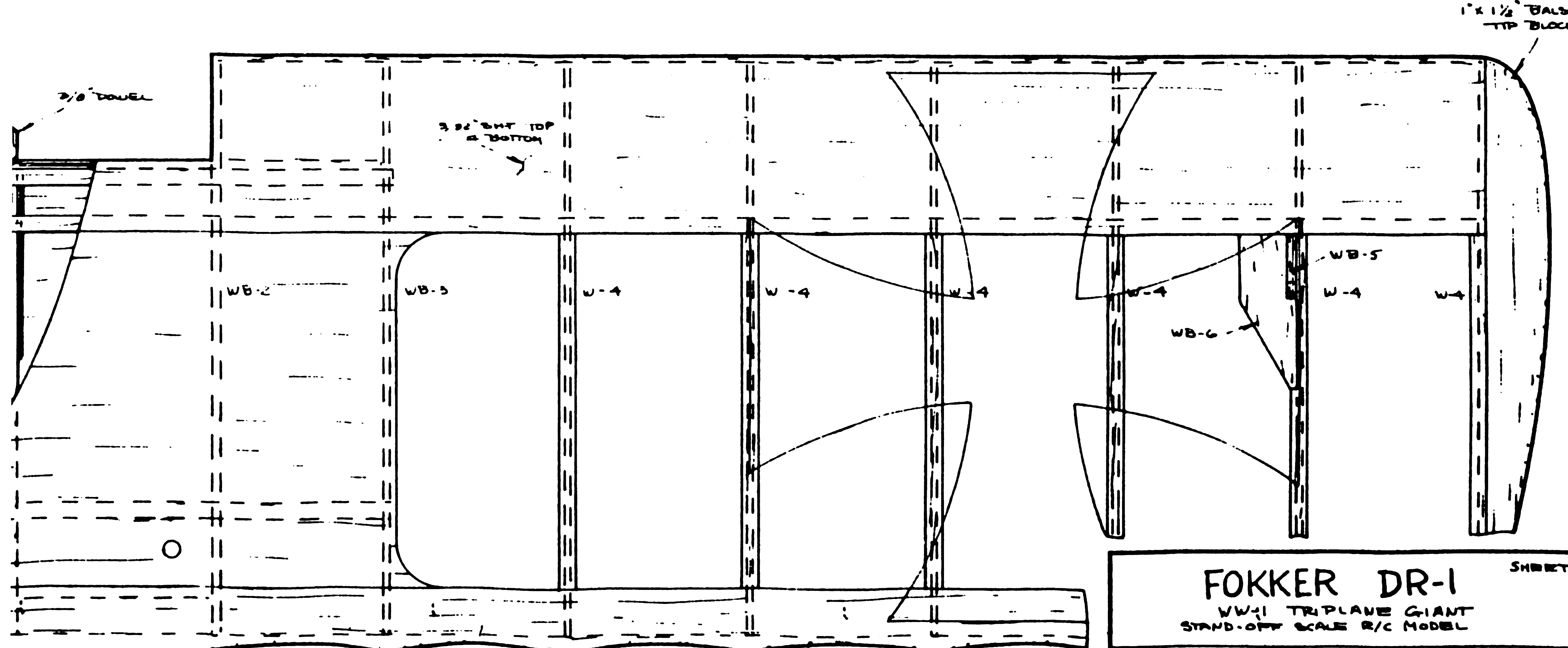
OPTIONAL CENTER WING ALBEROU INSTALLATION
NOTE - SCALE ALBEROU IN TOP WING ARE RECOMMENDED



BOTTOM WING

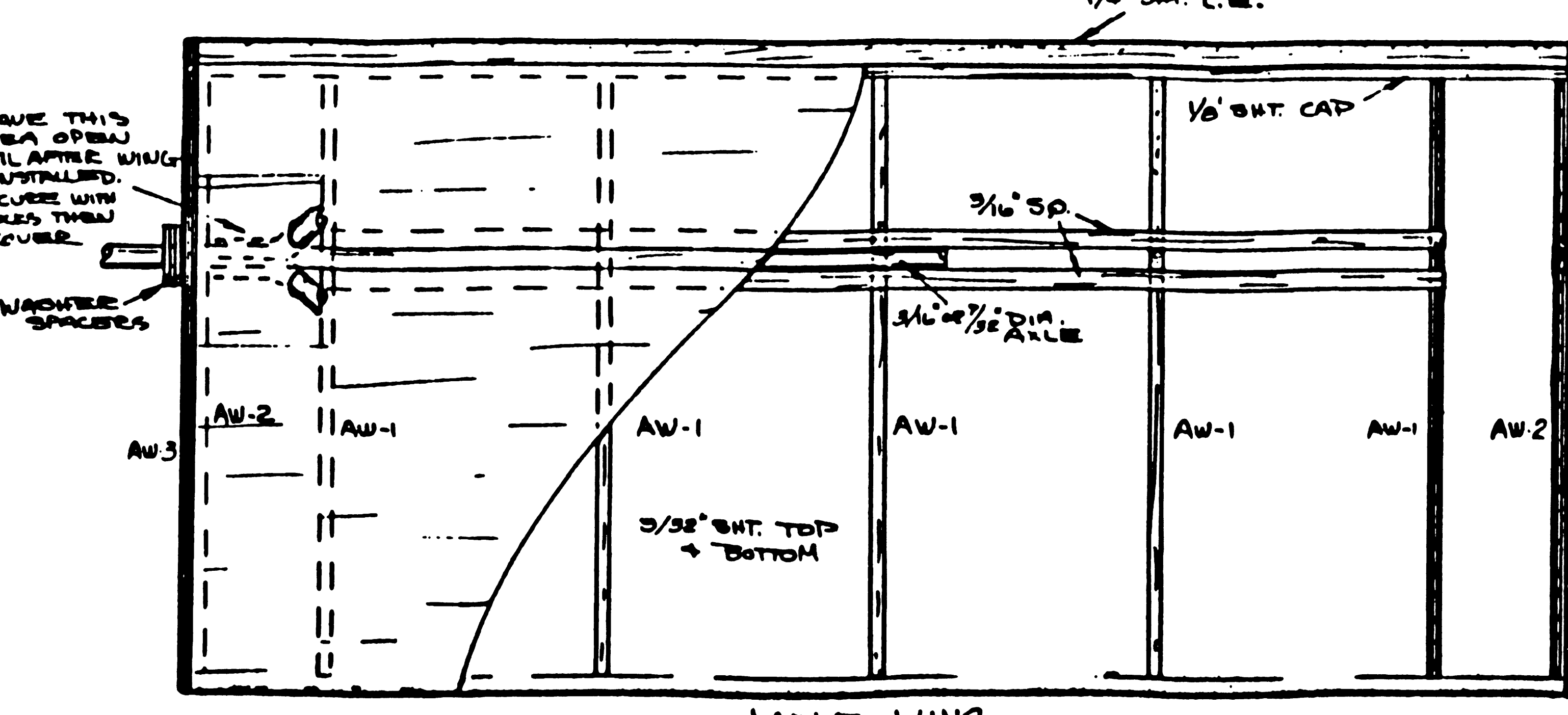
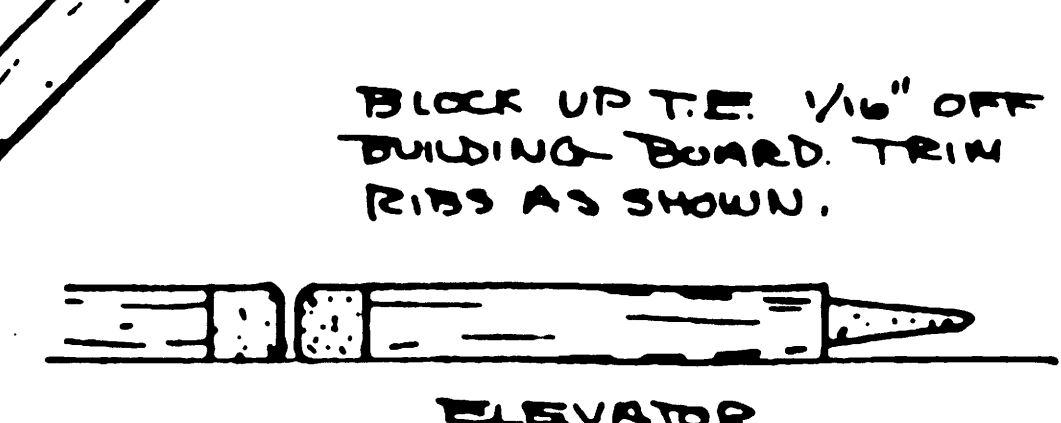
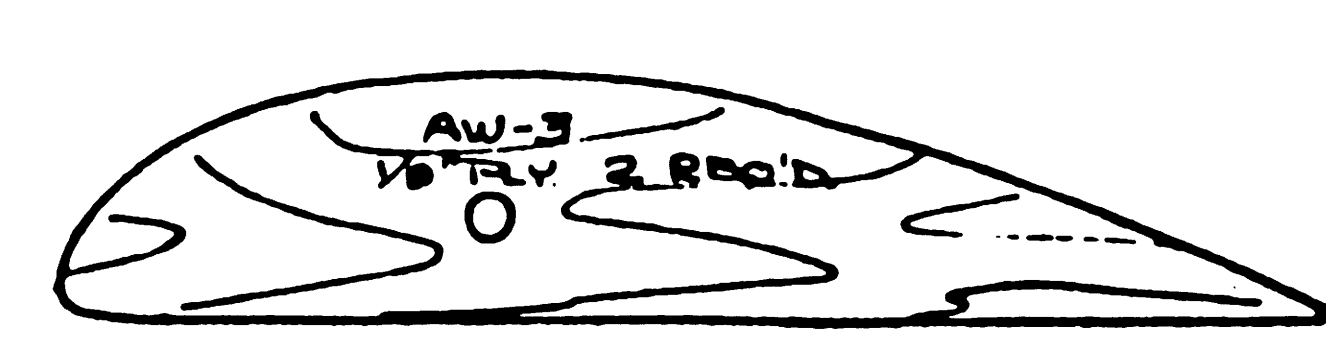
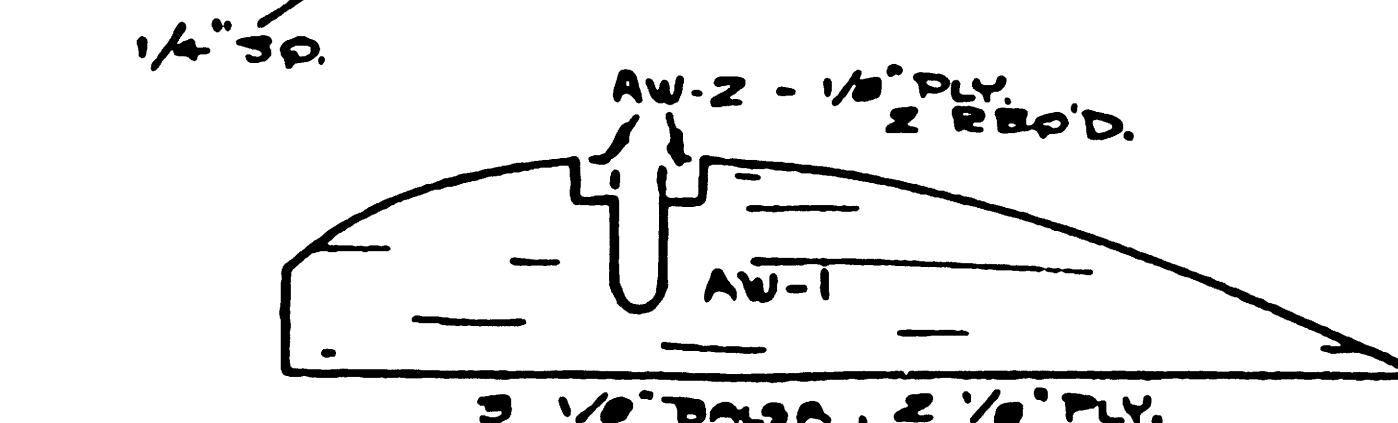
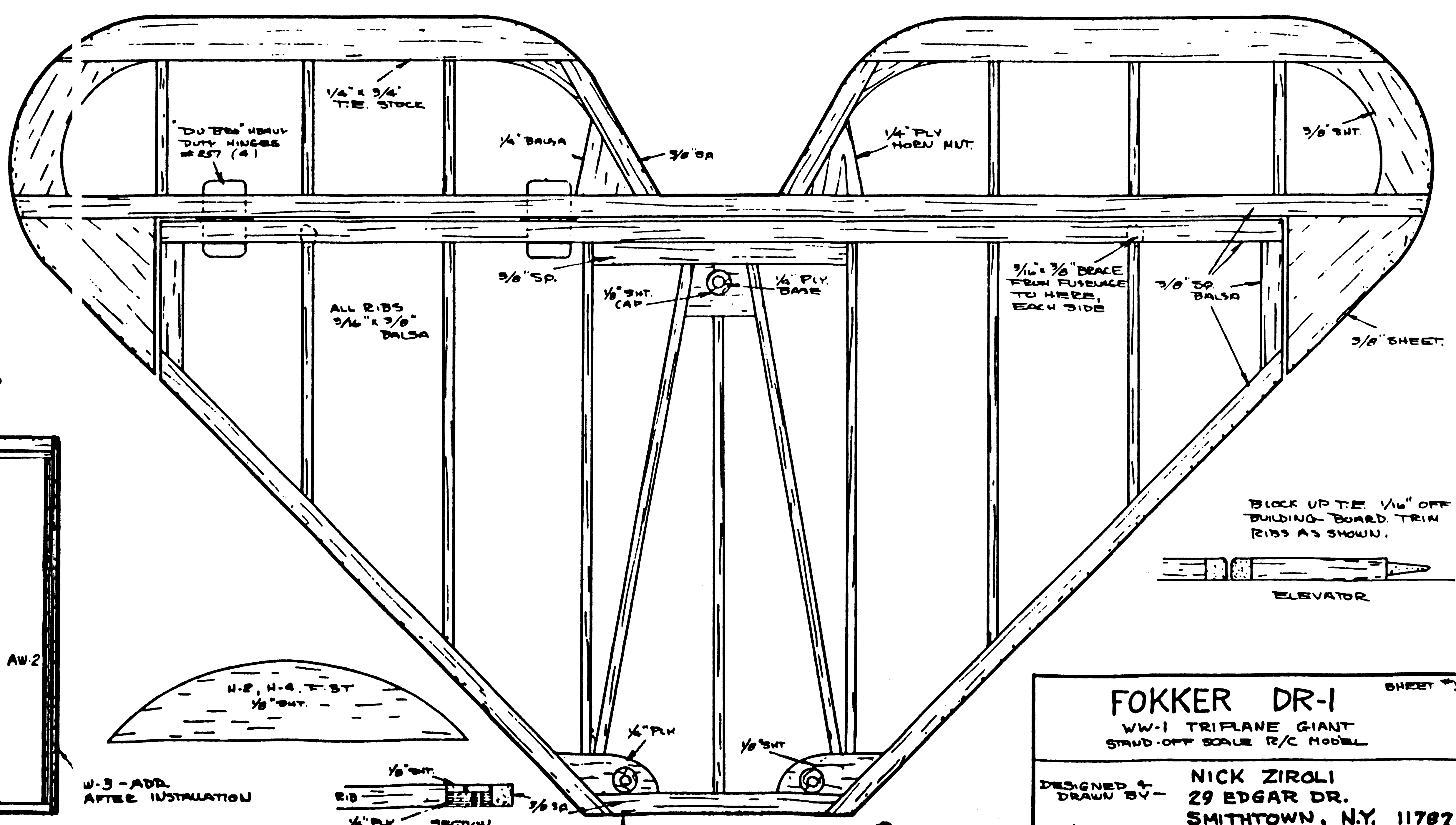
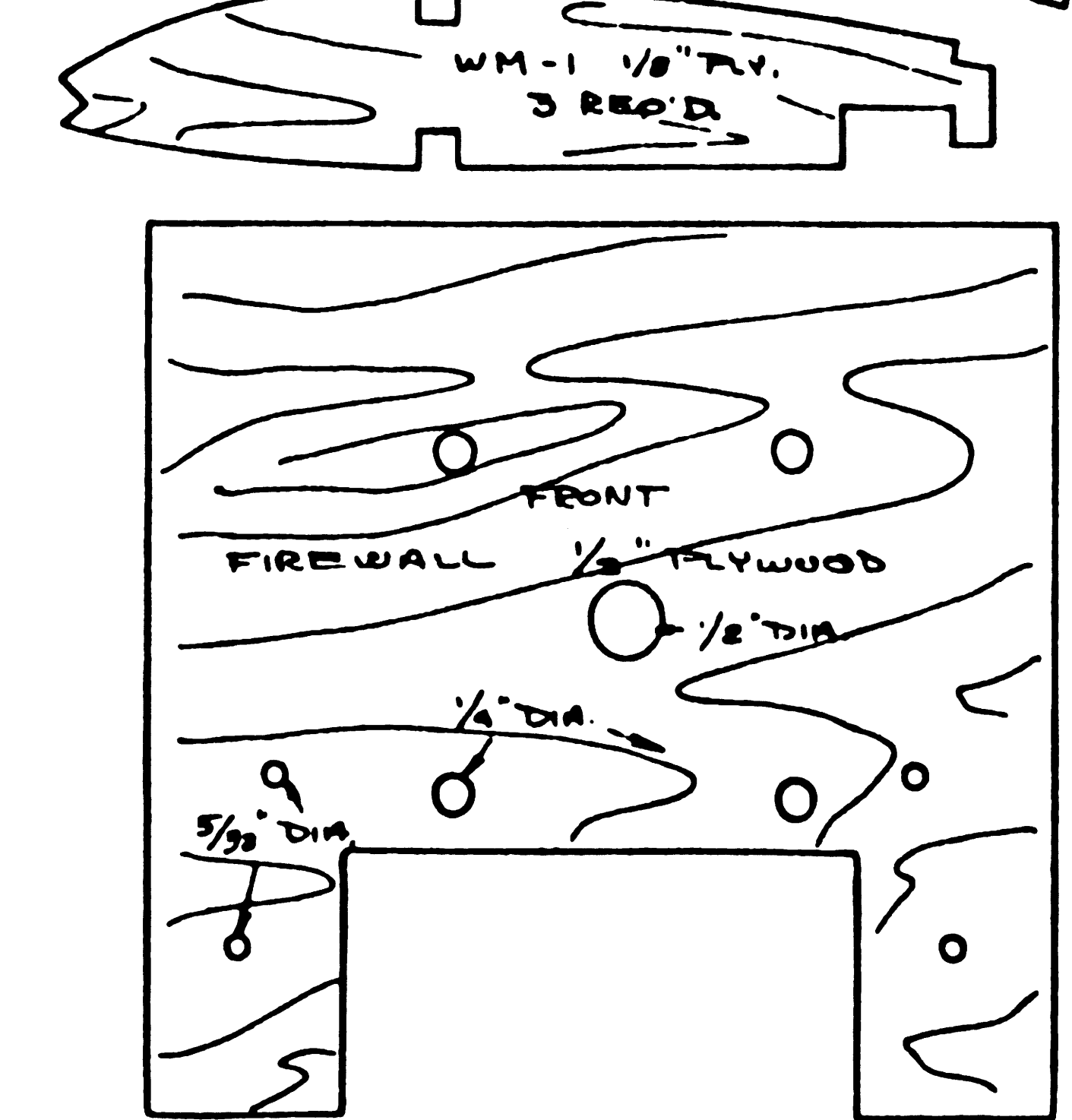
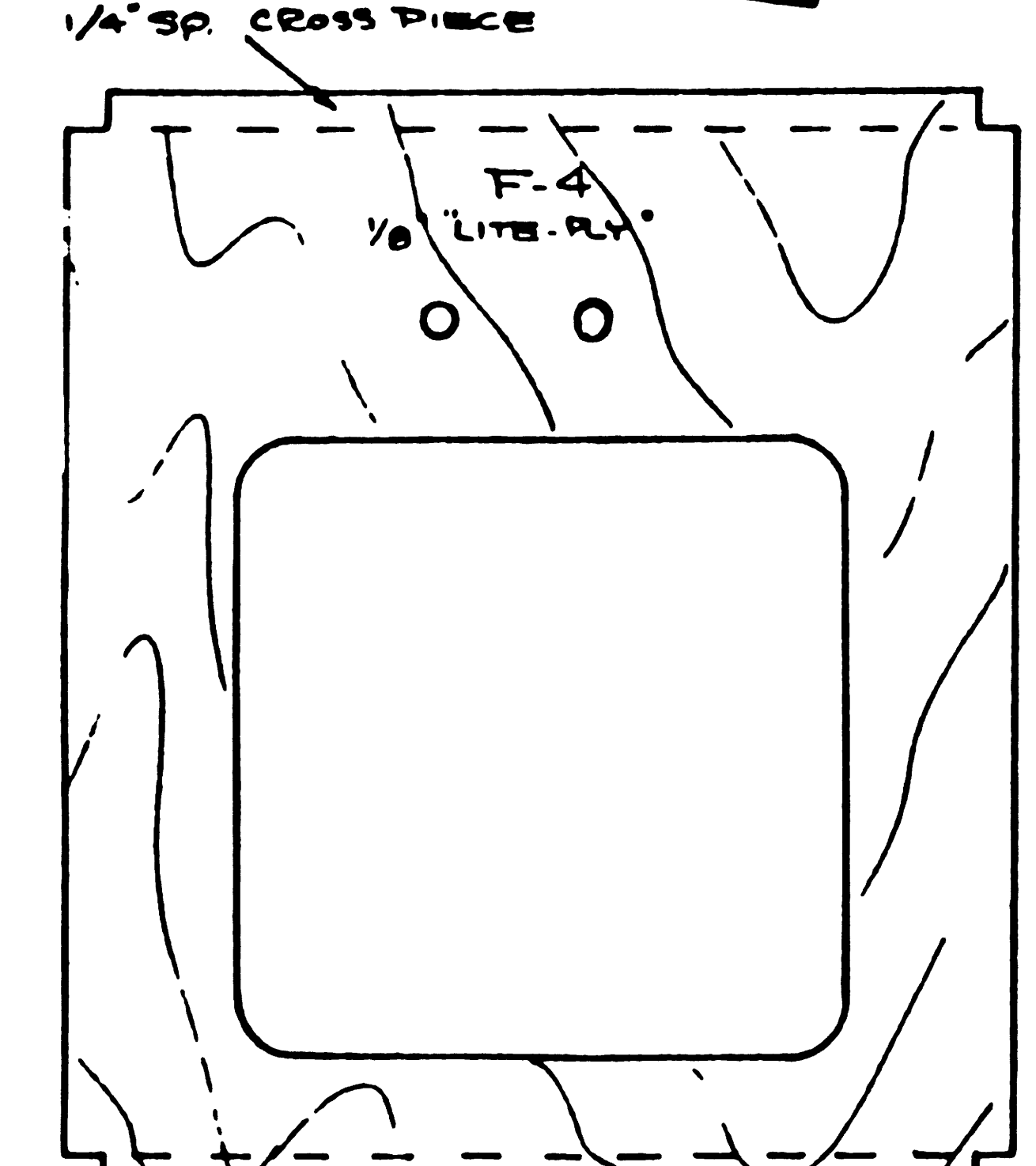
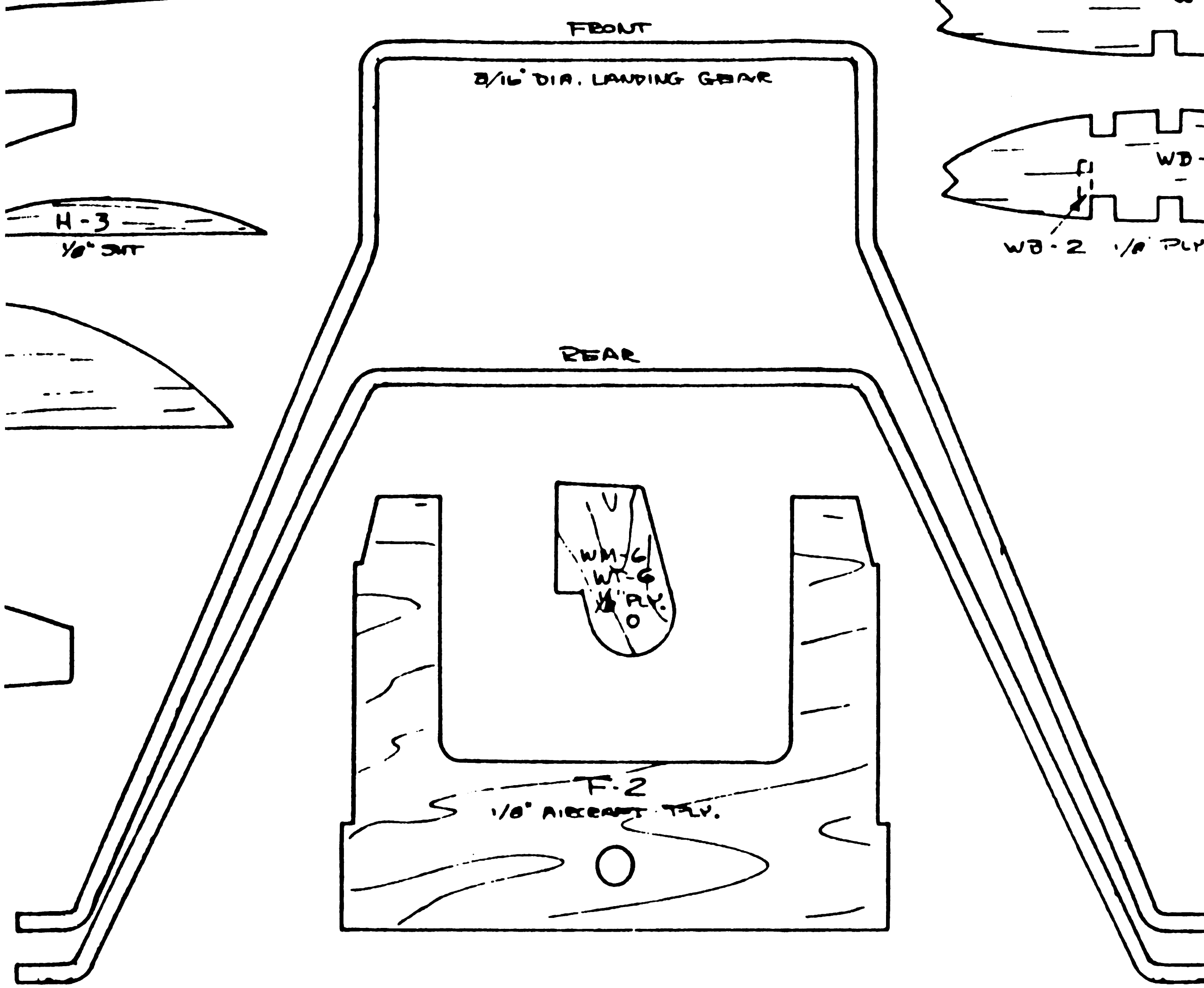
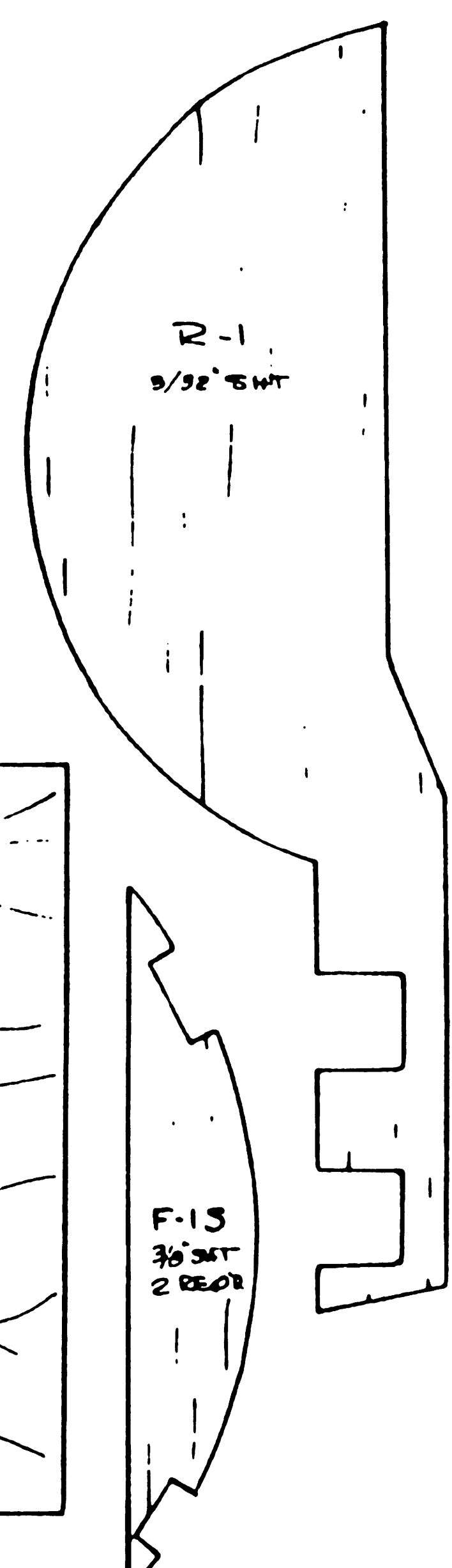
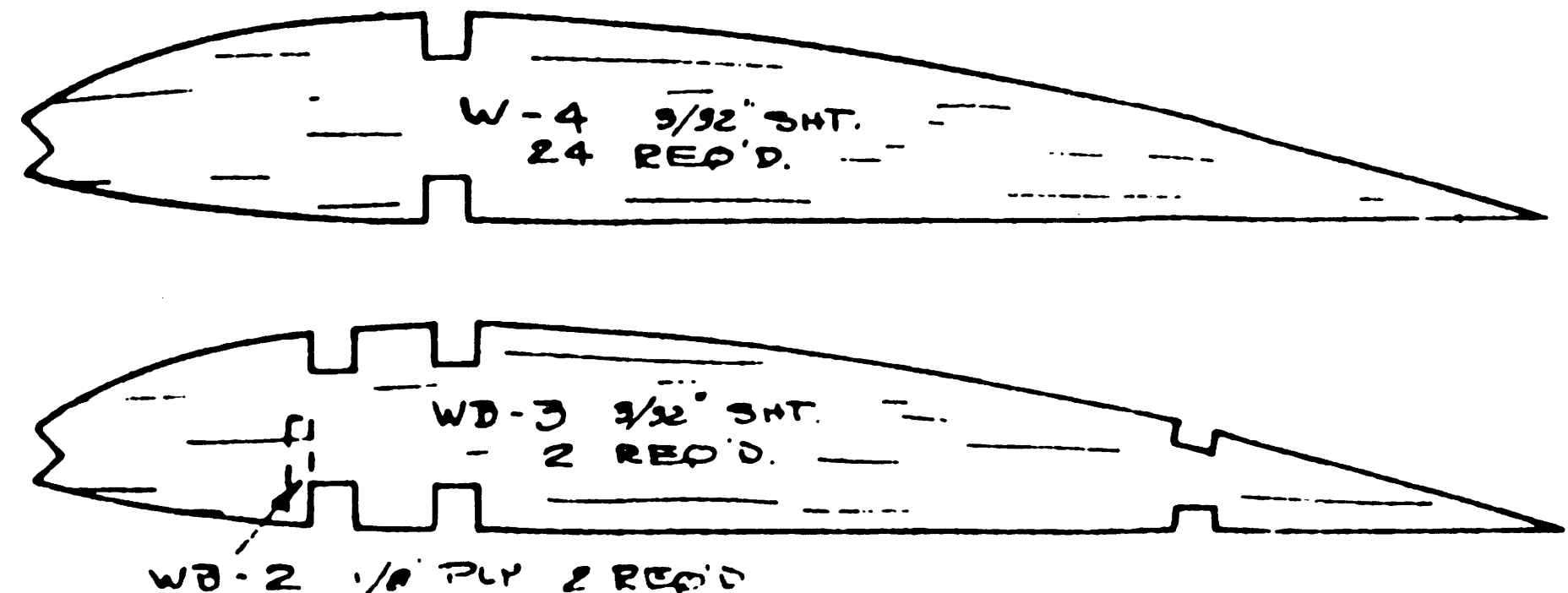
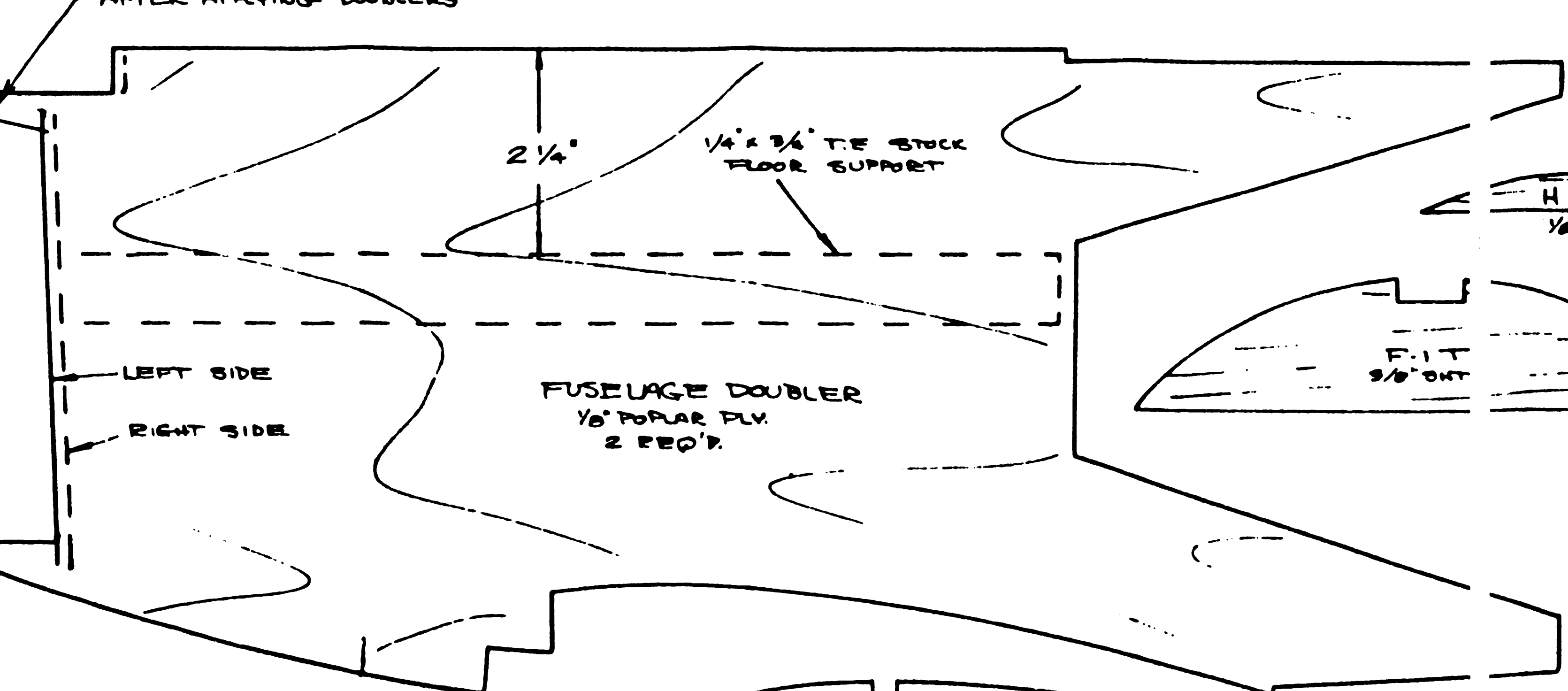
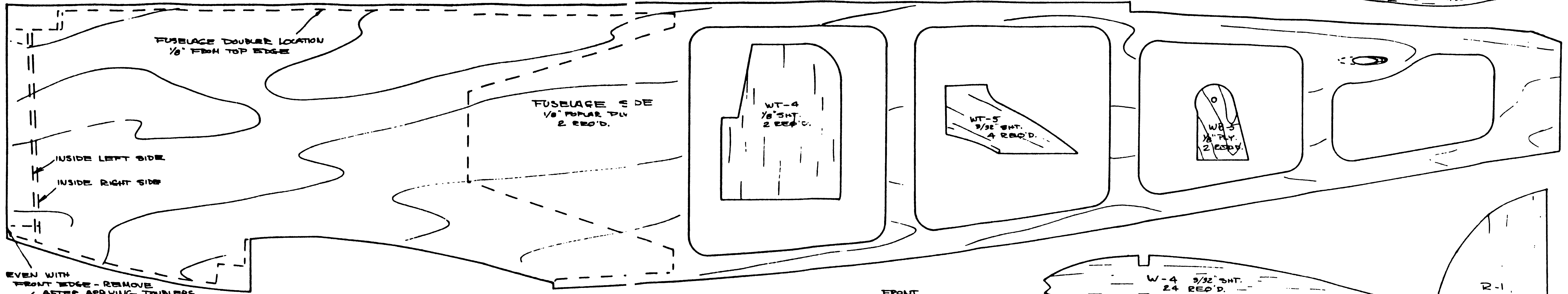


FUSELAGE



FOKKER DR-1 SHEET #2
 1/4" TRIPLANE GIANT
 STAND-OFF SCALE R/C MODEL
 DESIGNED & DRAWN BY - **NICK ZIROLI**
 29 EDGAR DR.
 SMITHTOWN, N.Y. 11787
 10-81

R-3 3/32" SHT.



FOKKER DR-1 SHEET #2
 WW-1 TRIPLANE GIANT
 STAND-OFF SCALE R/C MODEL
 DESIGNED & DRAWN BY -
NICK ZIROLI
 29 EDGAR DR.
 SMITHTOWN, N.Y. 11787