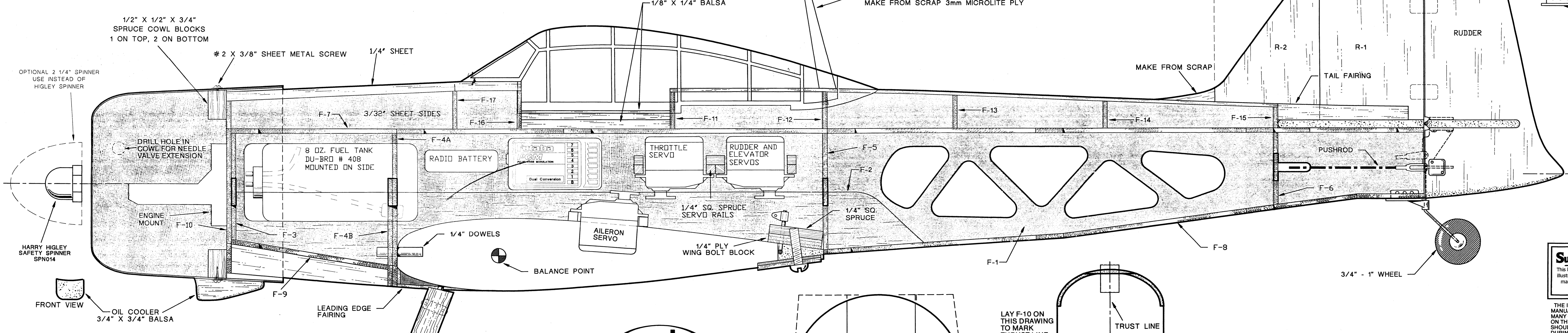
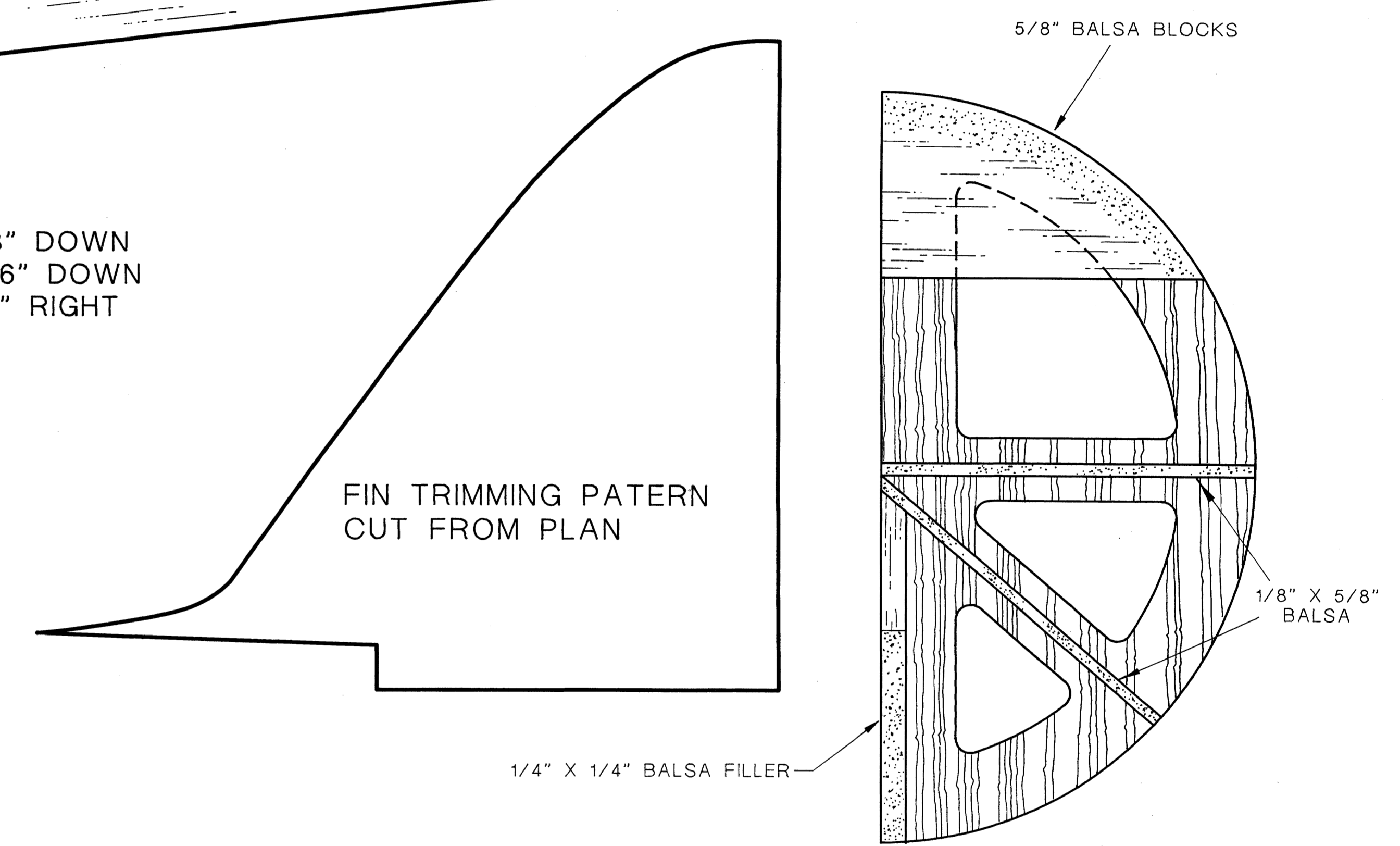


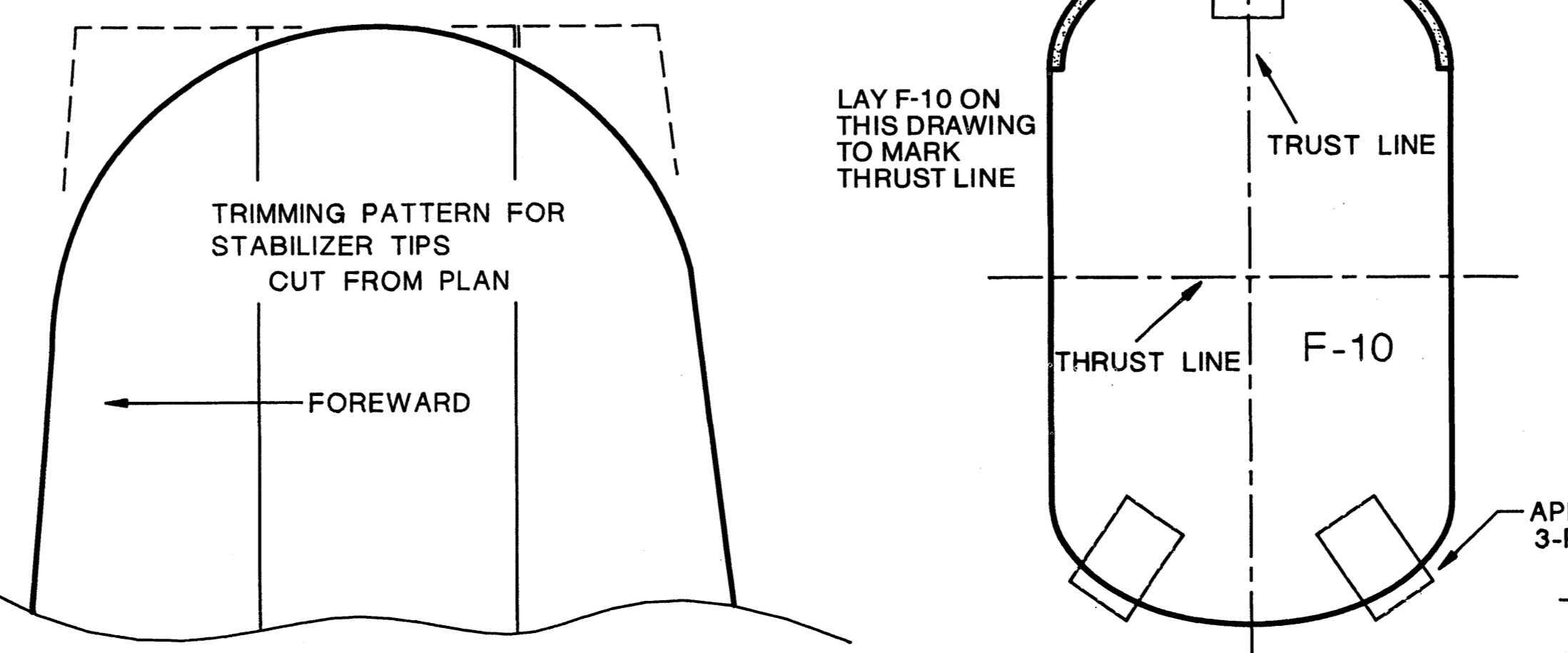
CONTROL THROWS:
ELEVATOR: 3/8" UP - 3/8" DOWN
AILERONS: 3/16" UP - 3/16" DOWN
RUDDER: 7/8" LEFT - 7/8" RIGHT



INCIDENCE SETUP

— THRUST LINE UP/DOWN = 0°
— SIDE = 0°

— WING = 0°
— STABILIZER = 0°



PUSHRODS

THIS MODEL IS DESIGNED TO USE DU-BRO LAZER RODS OR SULLIVAN GOLD-N-RODS FOR THE ELEVATOR AND RUDDER.

Success Series

This kit features a complete and fully illustrated step-by-step construction manual AND full-size plans that ASSURE SUCCESS!

THE ILLUSTRATIONS IN THE MANUAL CLARIFY AND DETAIL MANY OF THE ASSEMBLIES SHOWN ON THE PLAN, AND THE TWO SHOULD BE USED TOGETHER DURING CONSTRUCTION.

MIDWEST ZERO

A Quick-Building Warbird Model That Flies Like A Sport Plane	
Wing Span: 60"	Designed By: Tom Herr
Wing Area: 552 sq. in.	Eng. By: Tom Herr & Jim Newman
Flying Weight: 5 - 5 1/2 lbs.	Plans By: Tom Herr & Jim Newman
Radio: 4 Channel	Manufacturing By: Sue Burney
Motor Range: 35 - 45 2-Stroke	Kit Production: Ed Rogala
40 - 60 4-Stroke	Approved By: Frank Garcher
©1991, Midwest Products Co., Inc.	
Midwest Products Co., Inc. • 400 S. Indiana Street • Hobart, IN 46342	