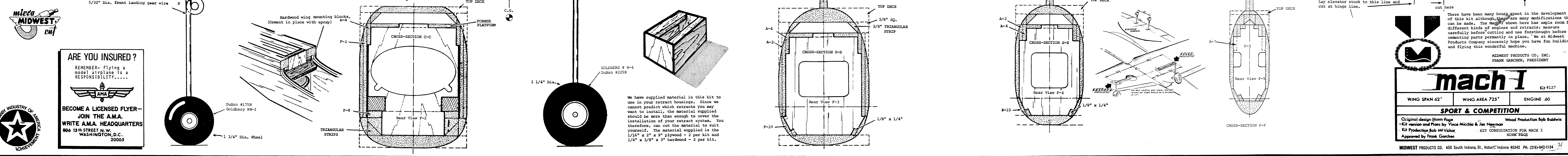
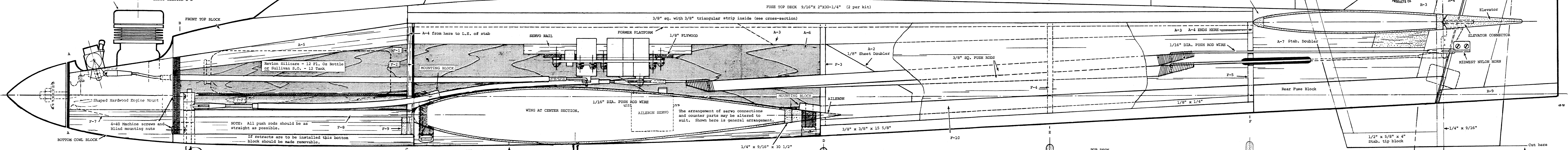
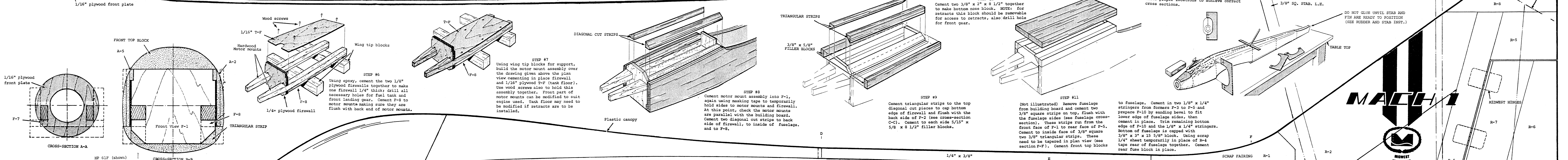
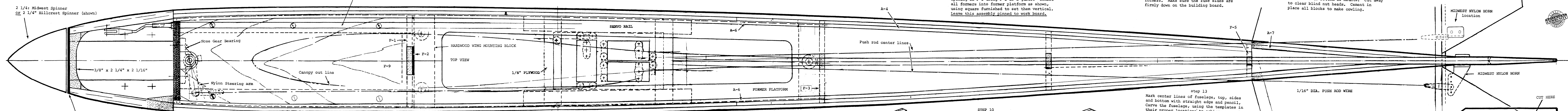
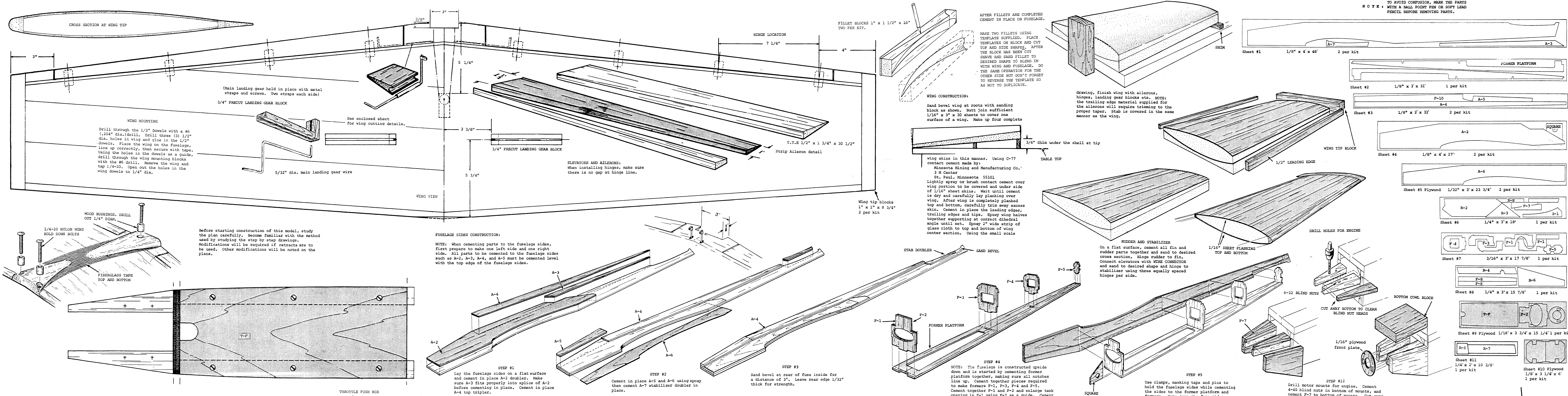


TO AVOID CORRUPTION, MAKE THE MODEL WITH A BALL POINT PEN OR SOFT LEAD PENCIL BEFORE REMOVING PARTS.



ARE YOU INSURED? REMEMBER - flying a model airplane is a RESPONSIBILITY... BECOME A LICENSED FLYER - JOIN THE A.M.A. WRITE A.M.A. HEADQUARTERS 406 15th STREET N.W. WASHINGTON, D.C. 20005

MACH 1 logo and product information: WING SPAN 62", WING AREA 725", ENGINE .60, SPORT & COMPETITION, Original design Norm Page, Wood Production Rob Baldwin, Kit version and Plans by Vince Micchio & Jay Nagman, Kit Production Rob Baldwin, KIT CONSTRUCTION FOR MACH 1 NORM PAGE, Approved by Frank Garcher, MIDWEST PRODUCTS CO., 400 South Indiana St., Hobart, Indiana 46542 PH. (219) 942-1124