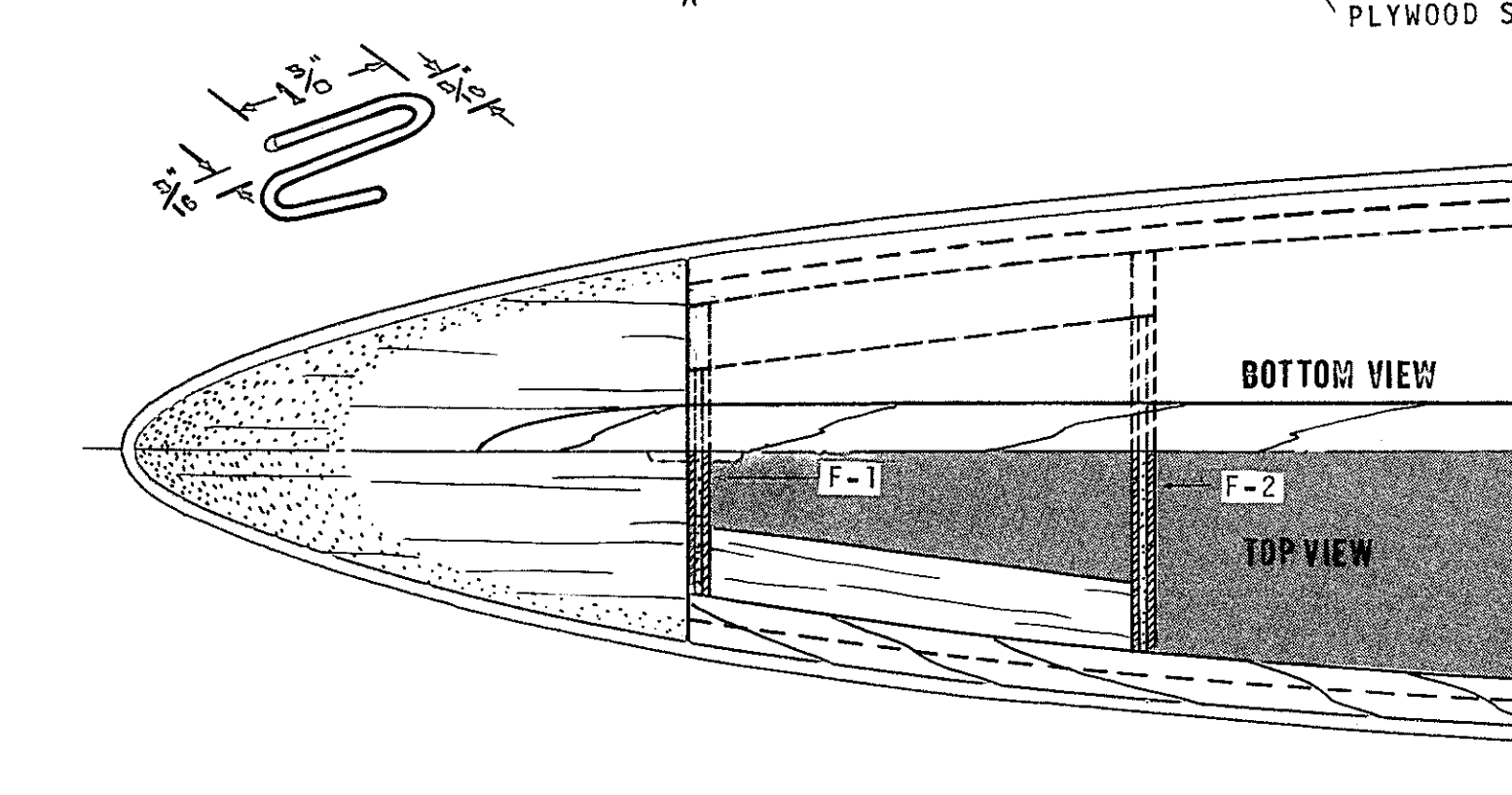
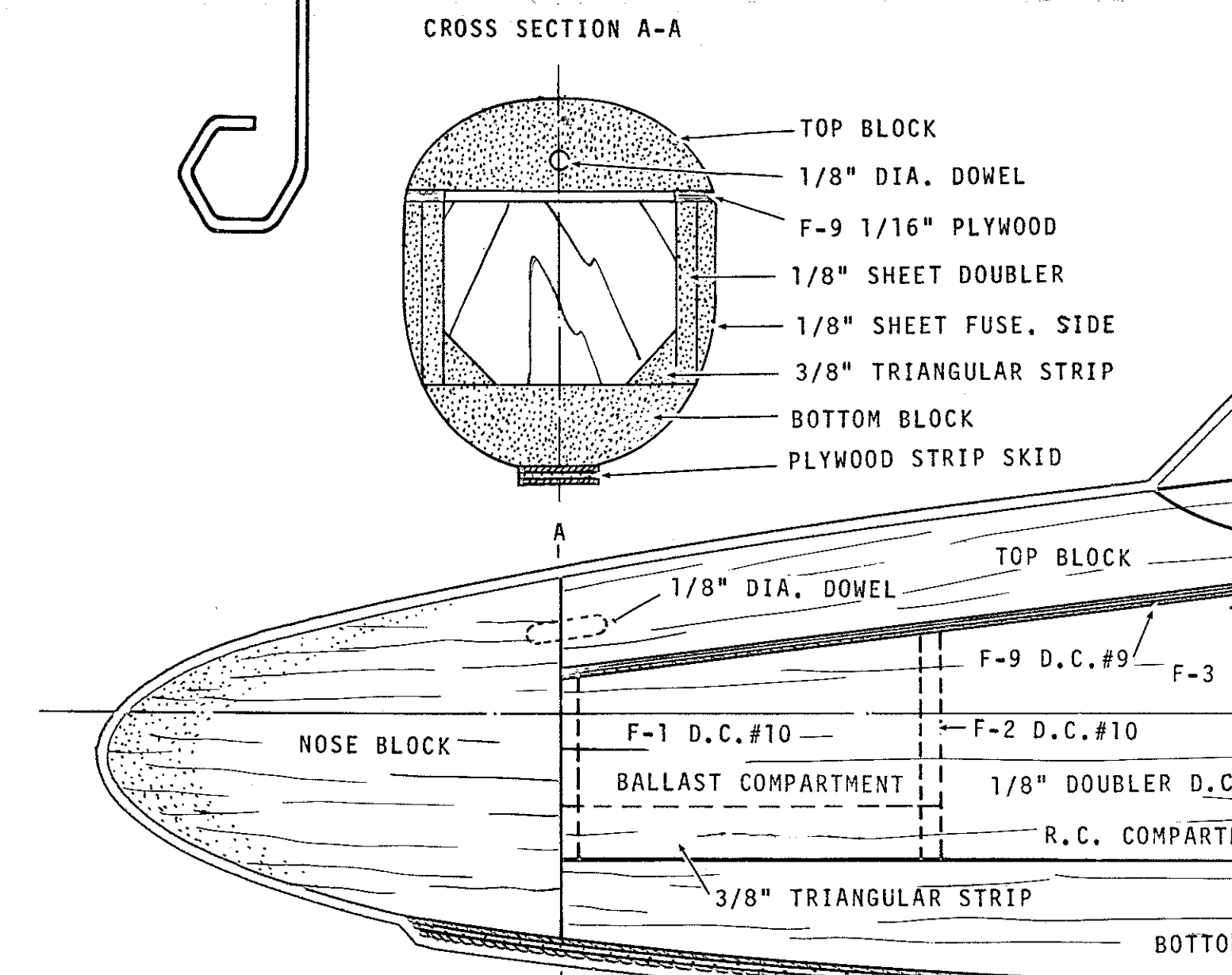


MIDWEST

All wood in this kit is [SUPER FINISHED] ask for it at your local hobby shop.

In this kit you will find Midwest micro cut balsa wood. Twenty years of research and development has brought you, the modeler, the finest wood available today. You will note the finish on our balsa is as smooth as silk. Our tolerances are held to plus or minus .001. We pride ourselves on giving the model builder the closest held tolerances in the industry. The picture of the micrometer with the Midwest wings indicates that all the wood that passes through our shop is precision checked and graded! Look for Midwest micro cut balsa at your dealers. The new super finish in balsa wood!



EZ JUAN Kit #124

HIGH PERFORMANCE SAIL PLANE FOR RADIO CONTROL

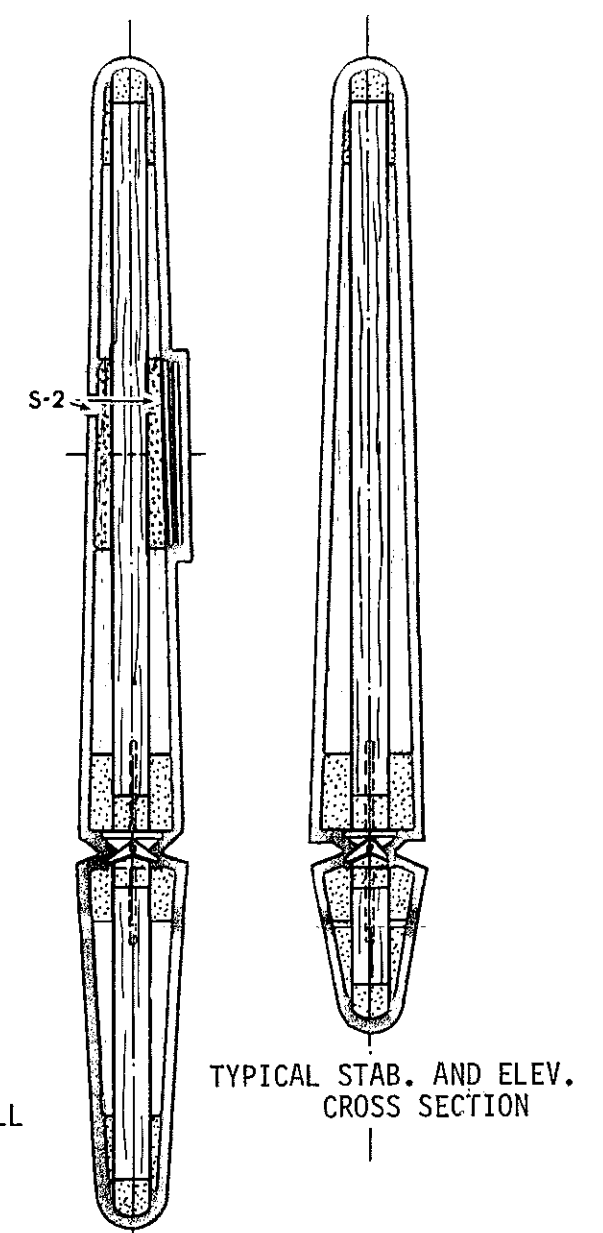
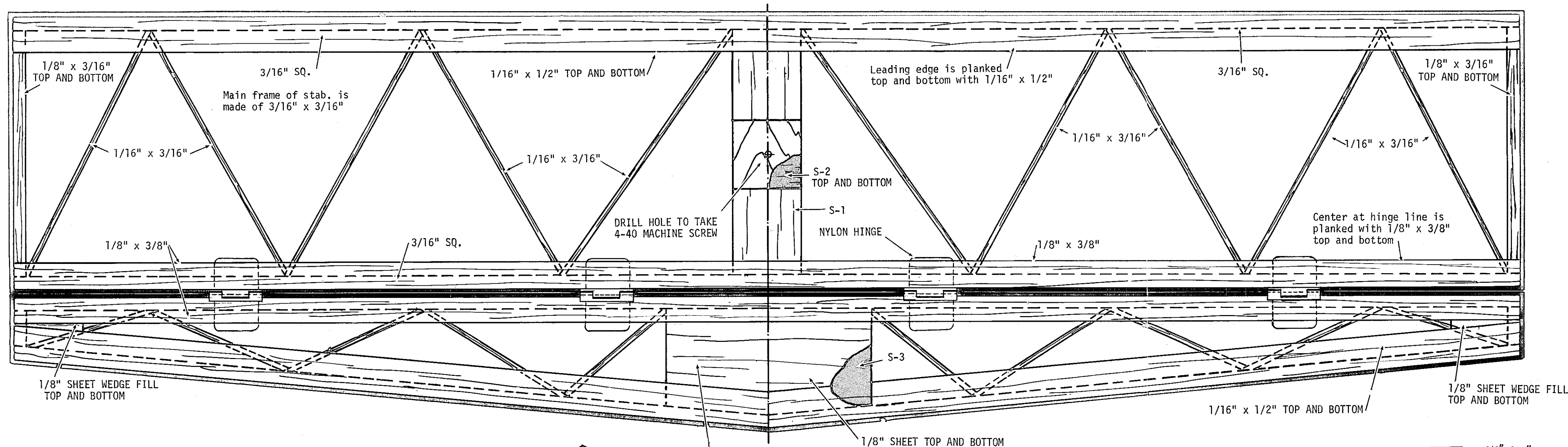
WINGSPAN 9"0" | WING AREA 810 SQ. IN. | WEIGHT 2 3/4 TO 3 1/2 LBS.

Designed by Le Gray | Approved by Frank Garcher
Plans by Vince Micchia | Kit Production Bob McVicker

MIDWEST PRODUCTS CO. • 600 S. IHD. ST. • HODART, INDIANA 46802

Plan No. 1

BECOME A LICENSED FLYER JOIN THE A.M.A. WRITE A.M.A. HEADQUARTERS 806 15th STREET N.W. WASHINGTON, D.C. 20005



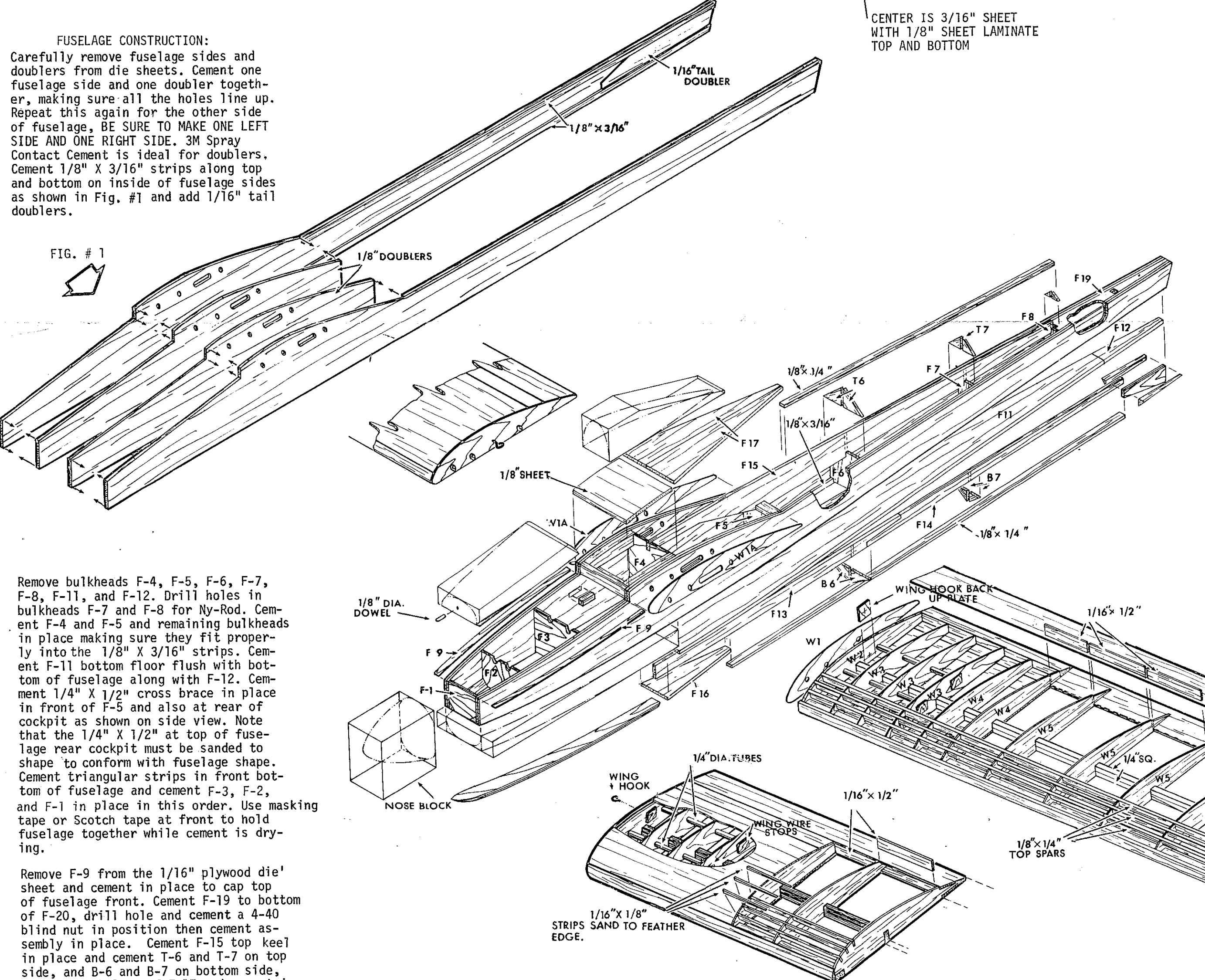
STAB AND RUDDER CONSTRUCTION:

Place wax paper over stabilizer and rudder portion of the plans. Frame out stabilizer and rudder using 3/16" sq. strips. These strips are to be cemented in place directly over the plans. Cement S-1 D.C.#11 in center of stab. Remove this from the plan. Cement 1/16" x 3/16" strips as shown on the plans. Do the same on the elevator, and in the center of the elevator cement S-3 D.C.#11 in place. Remove from plans and cement 1/16" x 1/2" strips to the top and bottom of the leading edge of stabilizer. Cement the 1/8" x 3/8" strips in place at the hinge of the stabilizer (top and bottom). At the hinge line of the elevator cement 1/8" x 3/8" strip. At the trailing edge cement the 1/16" x 1/2" strips to the top and bottom. Make two pieces (using pattern) that is on D.C.#3, and shorten to fit between the hinge line of elevator and the trailing edge. Fill the tip ends of the elevator with scrap 1/8" sheet on the top and bottom. Do this to the tips of the stab as well with 1/8" x 3/16" strips. Sand the stab and elevator as shown on the cross section, and prepare for covering. Plywood part is to go on top of stab as shown on fuselage side view. Rudder is built in the same manner following the drawing below.

NOTE:
To avoid confusion mark the parts with a ball point pen or soft lead pencil before removing parts.

FUSELAGE CONSTRUCTION:
Carefully remove fuselage sides and doublers from die sheets. Cement one fuselage side and one doubler together, making sure all the holes line up. Repeat this again for the other side of fuselage, BE SURE TO MAKE ONE LEFT SIDE AND ONE RIGHT SIDE. 3M Spray Contact Cement is ideal for doublers. Cement 1/8" x 3/16" strips along top and bottom on inside of fuselage sides as shown in Fig. #1 and add 1/16" tail doublers.

FIG. #1



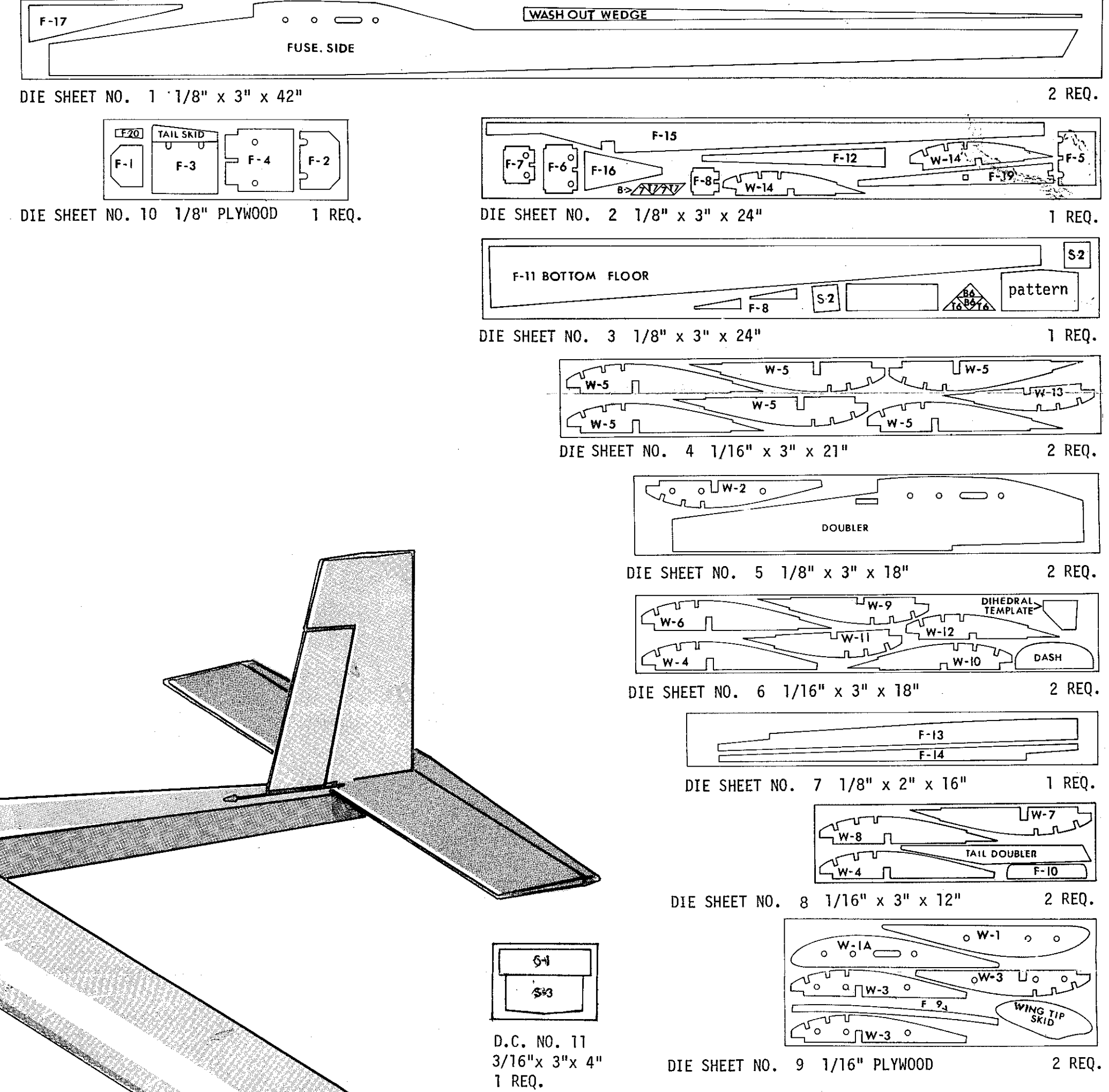
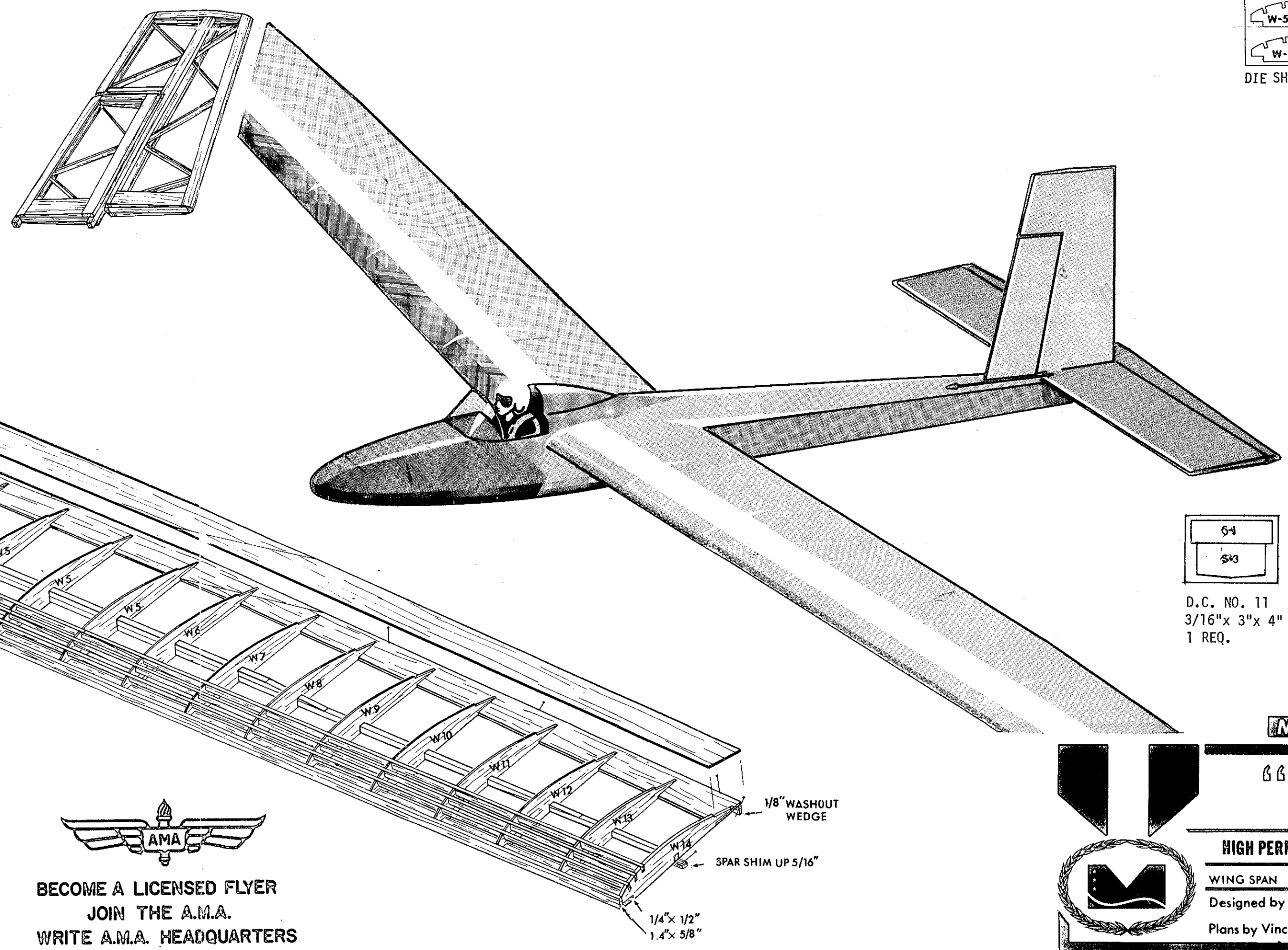
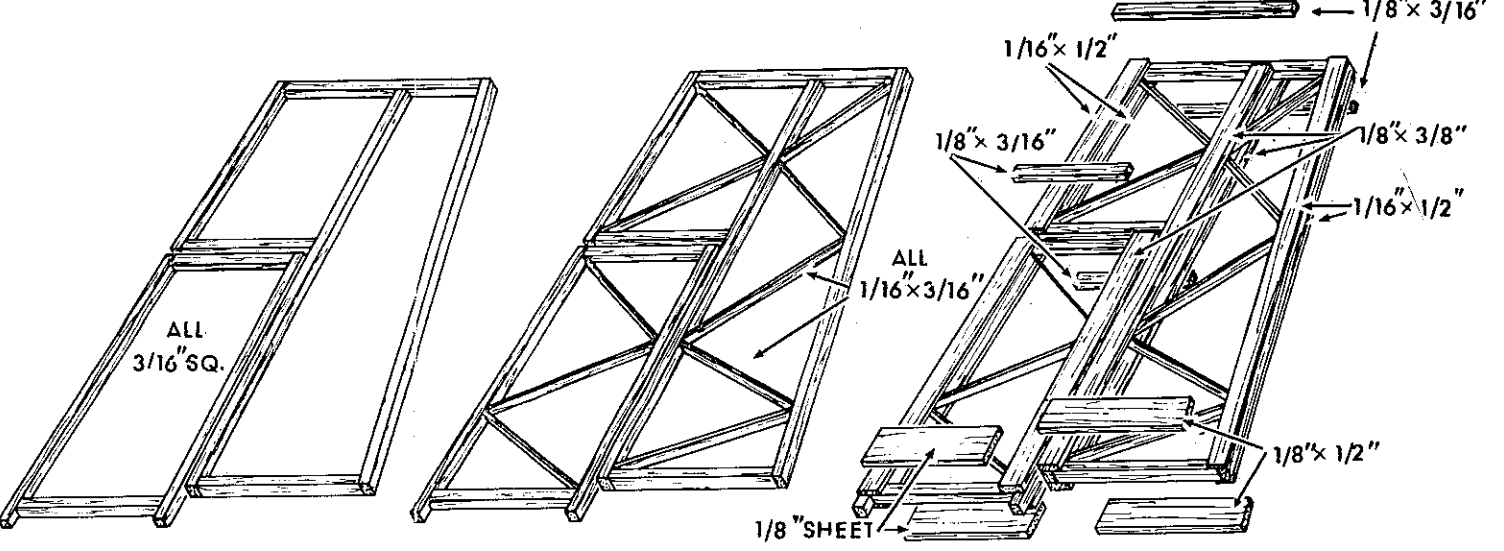
Remove bulkheads F-4, F-5, F-6, F-7, F-8, F-11, and F-12. Drill holes in bulkheads F-7 and F-8 for Ny-Rod. Cement F-4 and F-5 and remaining bulkheads in place making sure they fit properly into the 1/8" x 3/16" strips. Cement F-11 bottom floor flush with bottom of fuselage along with F-12. Cement 1/4" x 1/2" cross brace in place in front of F-5 and also at rear of cockpit as shown on side view. Note that the 1/4" x 1/2" at top of fuselage rear cockpit must be sanded to shape to conform with fuselage shape. Cement triangular strips in front bottom of fuselage and cement F-3, F-2, and F-1 in place in this order. Use masking tape or Scotch tape at front to hold fuselage together while cement is drying.

Remove F-9 from the 1/16" plywood die sheet and cement in place to cap top of fuselage front. Cement F-19 to bottom of F-20, drill hole and cement a 4-40 blind nut in position then cement assembly in place. Cement F-15 top keel in place and cement T-6 and T-7 on top side, and B-6 and B-7 on bottom side. Cement two halves of F-17 and cement in place as shown on side view. Insert Ny-Rods into holes and cement with epoxy. Note elevator rod goes through fuselage as shown on side view. F-13 and F-14 are cemented together to form bottom keel of fuselage and cemented in place along with B-6 and B-7 making sure that this is in the center of F-20. Cement F-16 in place

and 1/8" x 3/16" strips [top and bottom fuselage keel caps]. Remove tail doublers from die sheet and cement in place with triangular strip supports on both sides and sand to blend with fuselage. Front bottom block can now be shaped and cemented in place to be finish sanded later.

Drill 1/8" hole in top cowl block as shown on plans and cement 1/8" dia. dowel deep enough to protrude 3/16" so mark can be made in nose block to locate hole. Rough carve nose block and cement in place. Cement 1/16" plywood rib W-1A in place making sure all holes line up. Cement rudder in place which slips into 3/16" sq. holes in F-21 and triangular strips on both sides of rudder.

3/16" x 3/16" is cemented into inside of doubler, this is to be used as pilot head platform later. After final sanding and shaping entire fuselage it can be prepared for covering. Plywood skid is cemented in place last along with tow hook.



**BECOME A LICENSED FLYER
JOIN THE A.M.A.
WRITE A.M.A. HEADQUARTERS
806 15th STREET N.W.
WASHINGTON, D.C.
20005**

Plan No. 2

MIDWEST PRODUCTS CO.

“EZ JUAN” KIT #124

HIGH PERFORMANCE SAIL PLANE FOR RADIO CONTROL

WING SPAN 9'0" | WING AREA 810 SQ. IN. | WEIGHT 2 3/4 TO 4 1/4 LBS.

Designed by Le Gray | Approved by Frank Garcho | Plans by Vince Micchia | Kit Production Bob McVicker

MIDWEST PRODUCTS CO. 400 S. INDIANA HOBART, IND.