

Success Series
 This kit features a complete and fully illustrated step-by-step instruction booklet - AND - full-size plans that ASSURE SUCCESS!

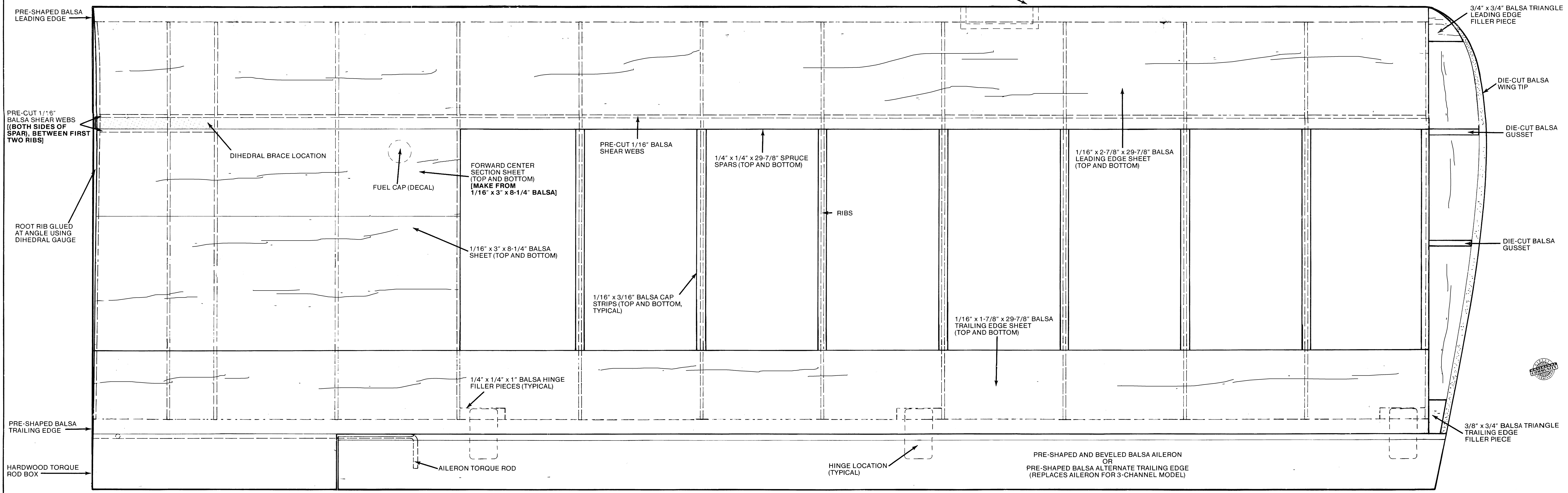
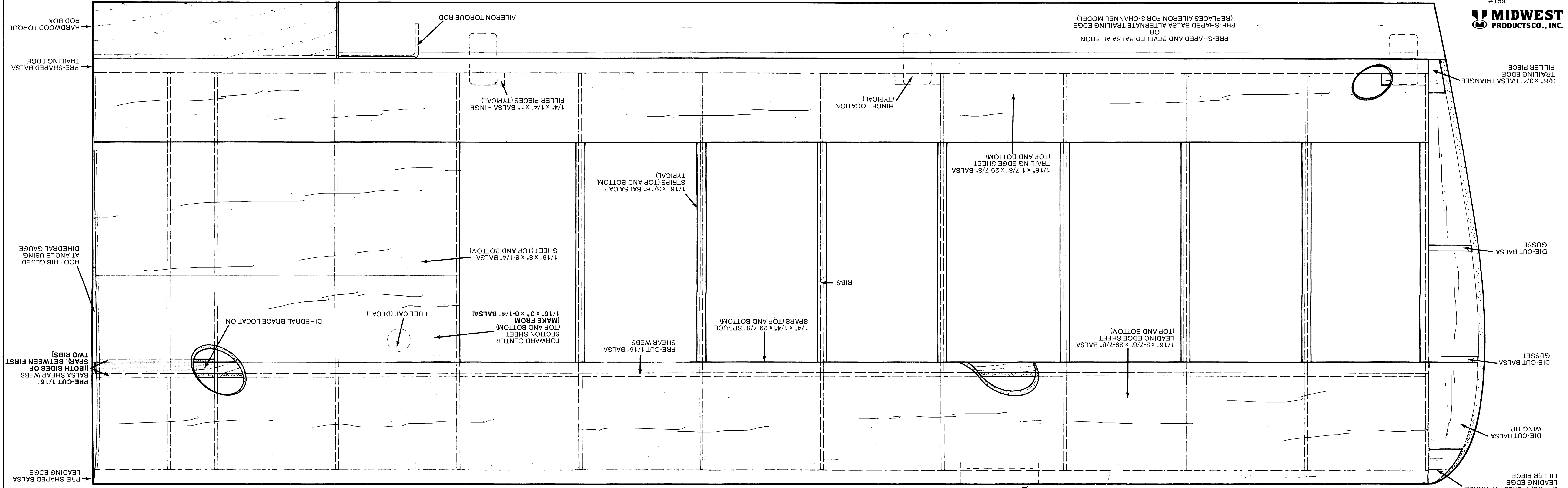
THE ILLUSTRATIONS IN THE MANUAL CLARIFY AND DETAIL MANY OF THE ASSEMBLIES SHOWN ON THESE PLANS, AND THE TWO SHOULD BE USED TOGETHER.

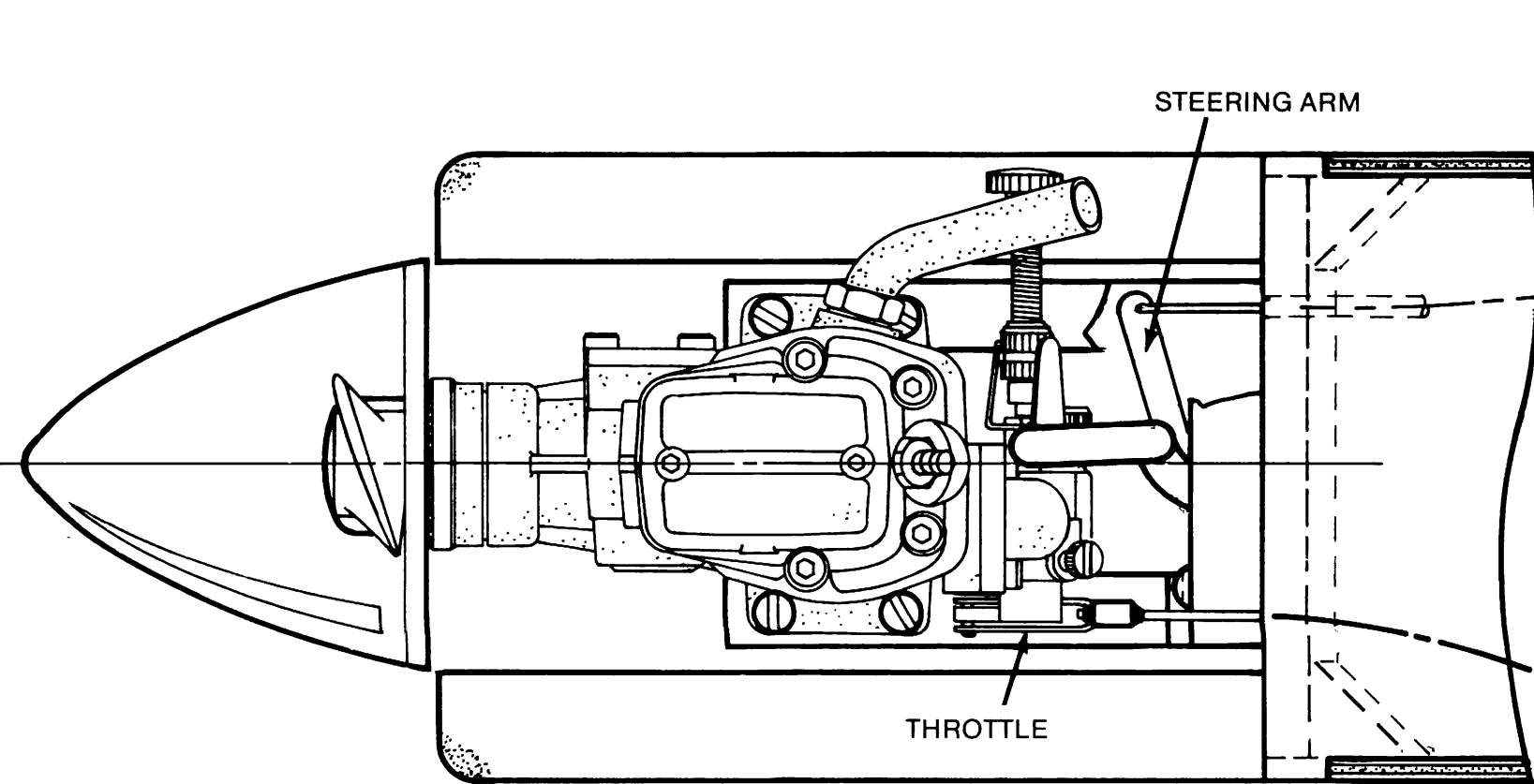


MIDWEST AERO-STAR .40™ 9/87 Kit No. 159

Outshines All Other R/C Trainers

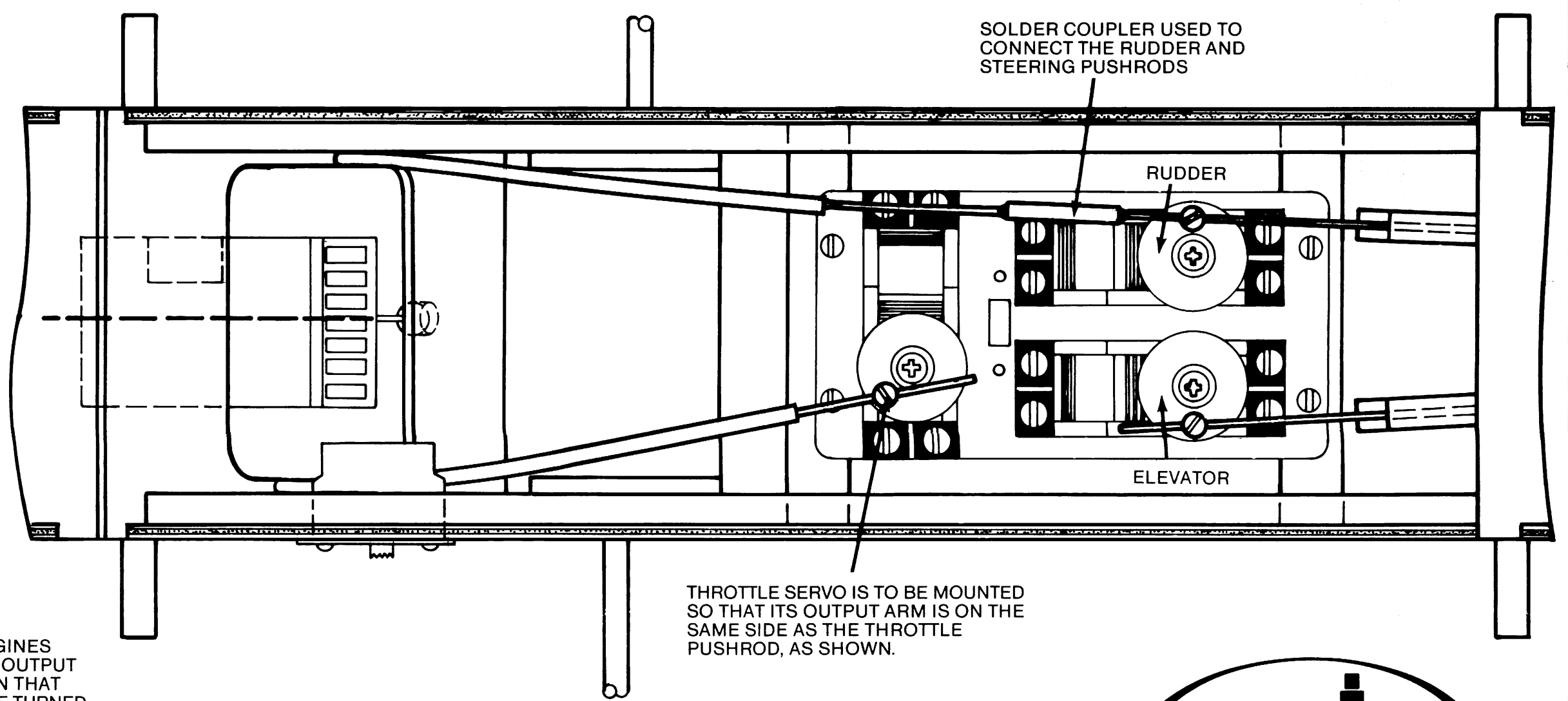
Wing Span: 62"	Kit Production: Ed Rogala
Wing Area: 675 sq. in.	Engineered By: Don Sobbe
Flying Weight: 5 - 5 1/2 lbs.	Plans By: Neil Liptak
Radio Controls: 3 - 4 Channels	Manufacturing By: Sue Borney
Power: .30 - .40 2-Cycle, .40 - .45 4-Cycle	Approved By: Frank Garcher



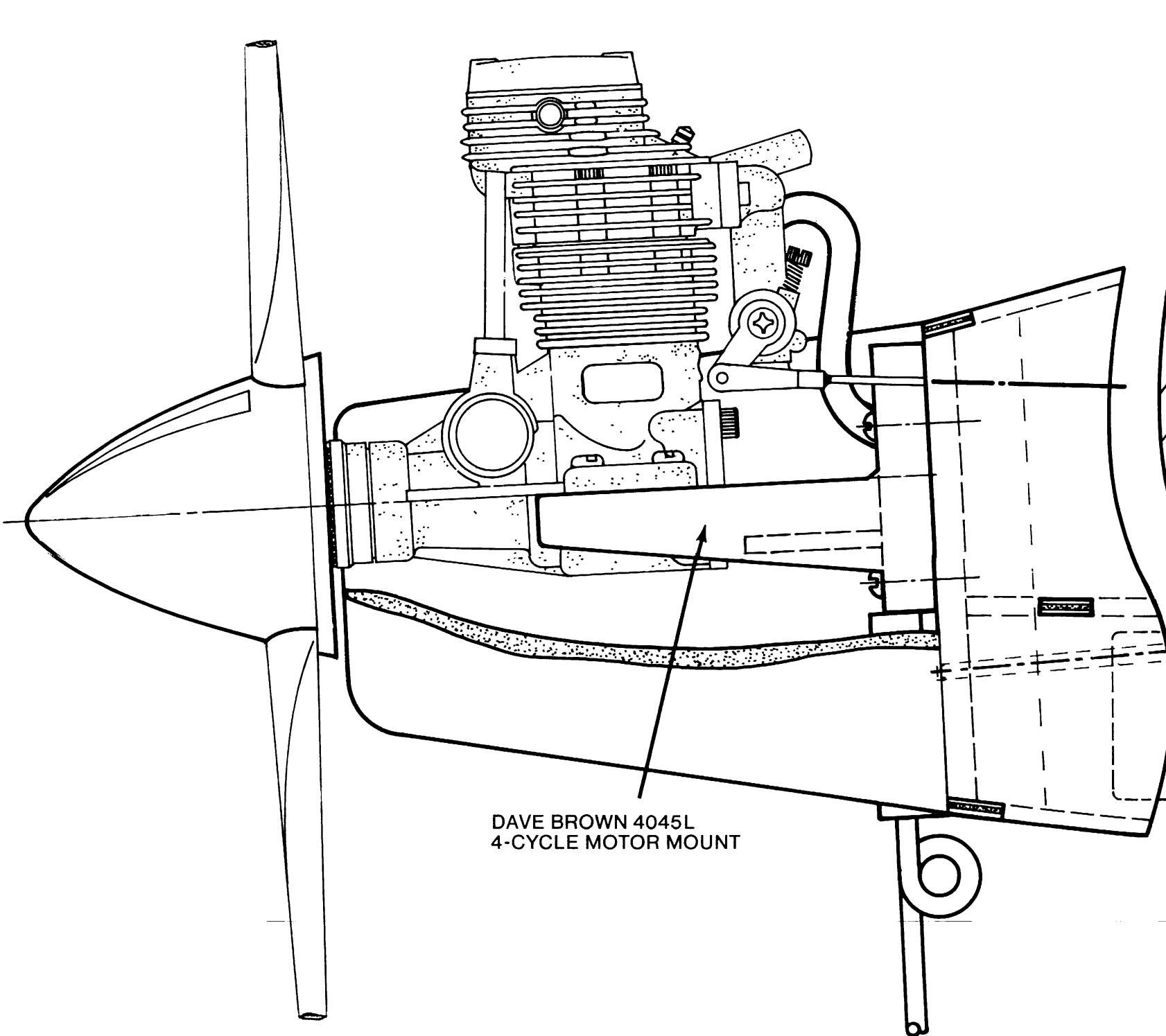


TYPICAL 4-CYCLE
ENGINE INSTALLATION

NOTE: SOME 4-CYCLE ENGINES
HAVE THEIR CARBURETOR OUTPUT
ARMS ON THE LEFT SIDE. IN THAT
CASE, THE FIREWALL CAN BE TURNED
AROUND SO THAT THE NOSE GEAR
STEERING ARM IS ON THE RIGHT SIDE.



THROTTLE SERVO IS TO BE MOUNTED
SO THAT ITS OUTPUT ARM IS ON THE
SAME SIDE AS THE THROTTLE
PUSHROD, AS SHOWN.



DAVE BROWN 4045L
4-CYCLE MOTOR MOUNT

