

1/8"x1" Balsa trailing edge

3/32" PLY WING STRUT ATTACHMENT

Dihedral is 2" under this rib

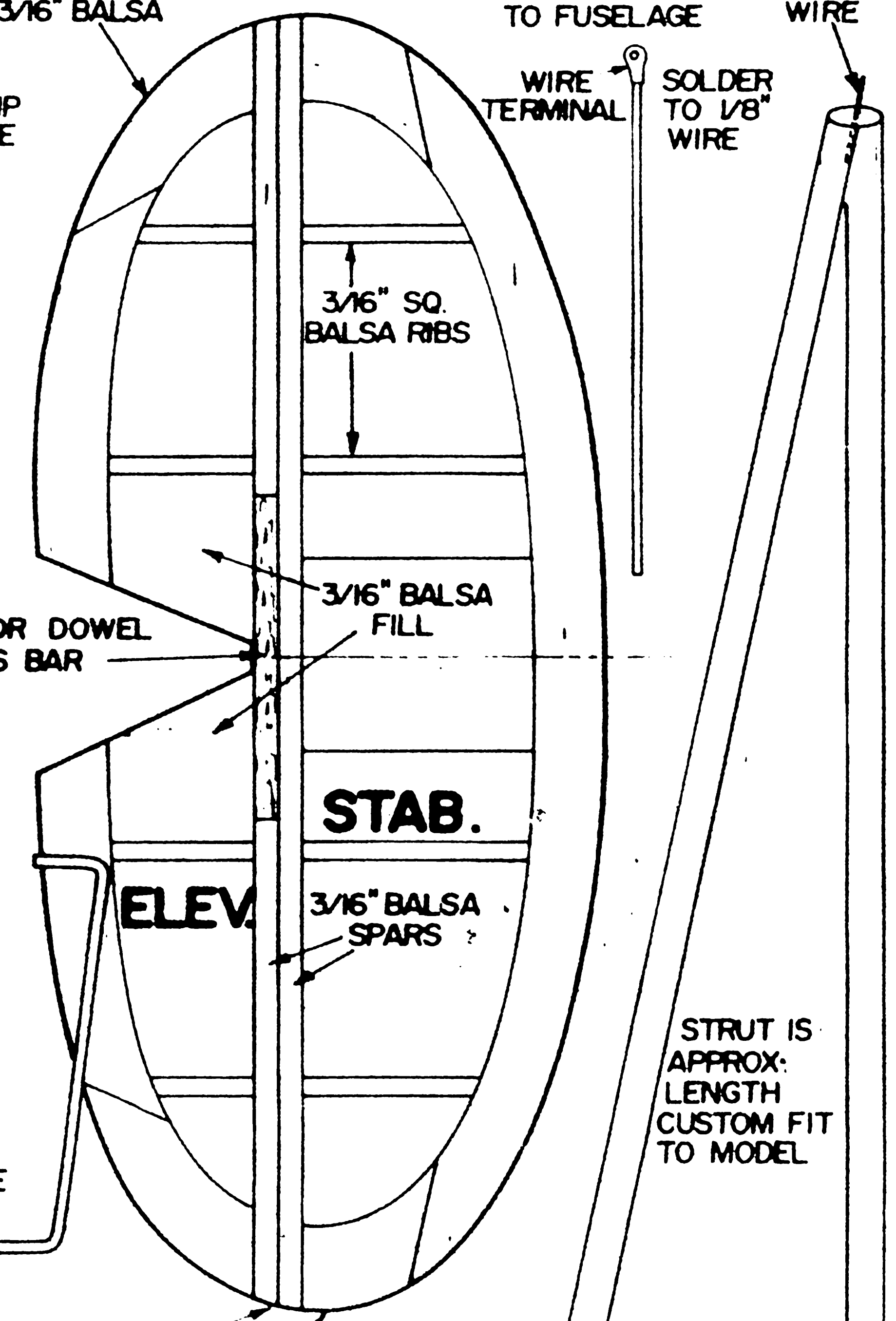
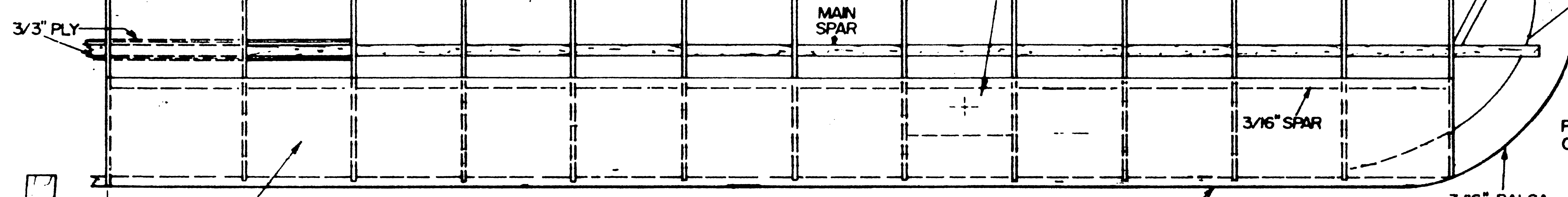
3/16" Balsa

Gear strut to fuselage

.032 wire

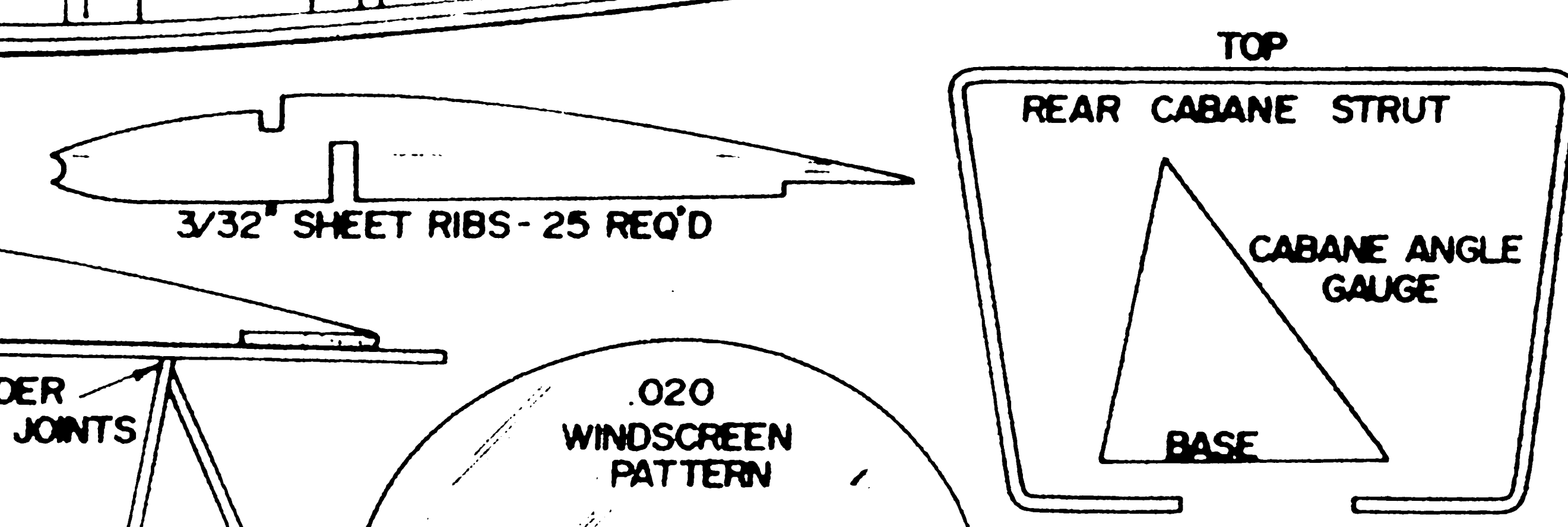
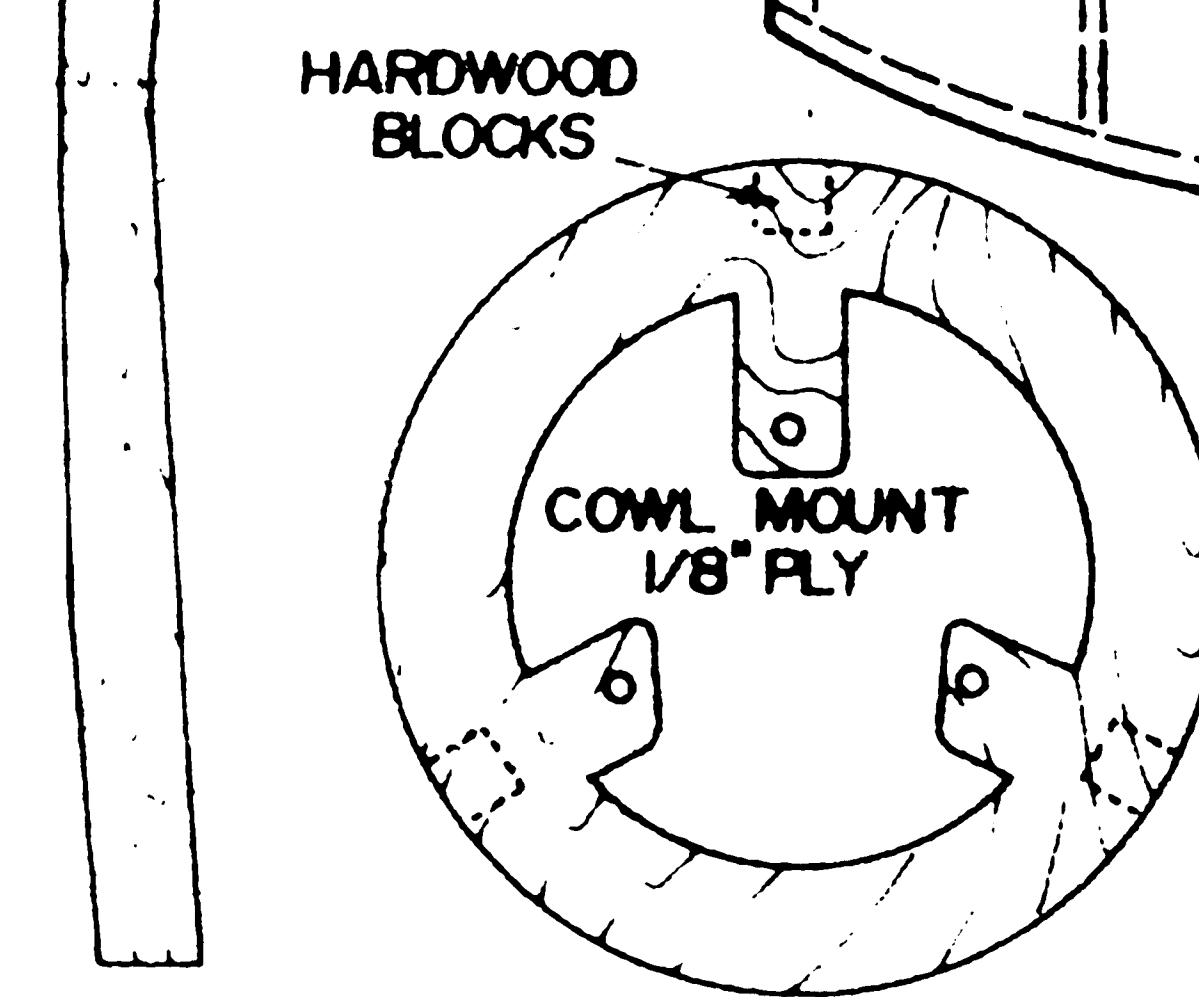
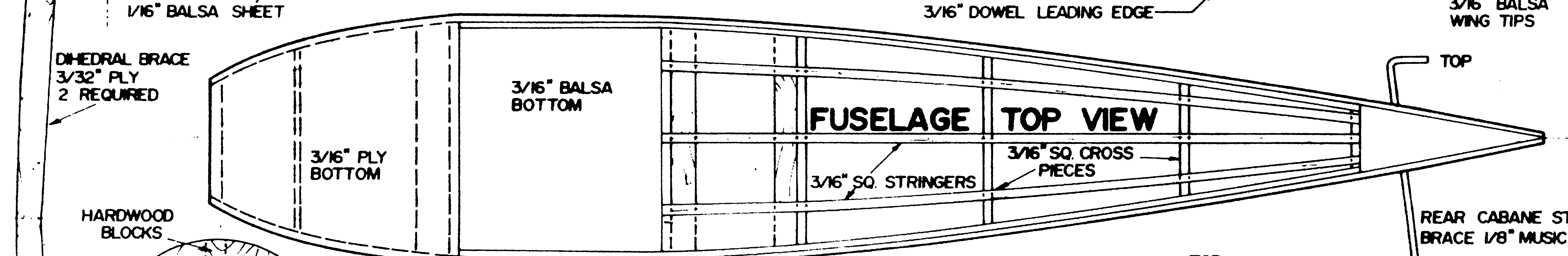
WING PLAN

PATTERN FOR MAIN SPAR - MAKE 2, NOTE TAPER AT CENTER AND ON TIP END - 1/4"x1/2" PINE OR SPRUCE

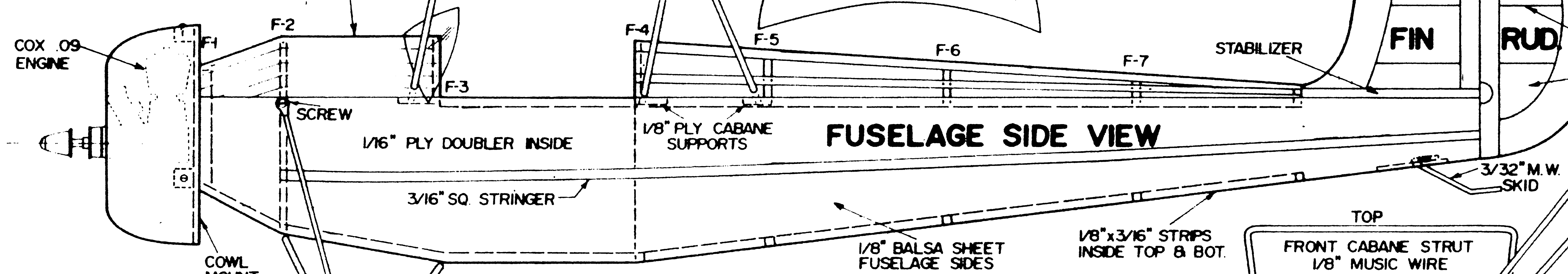


STRUT IS APPROX. LENGTH CUSTOM FIT TO MODEL

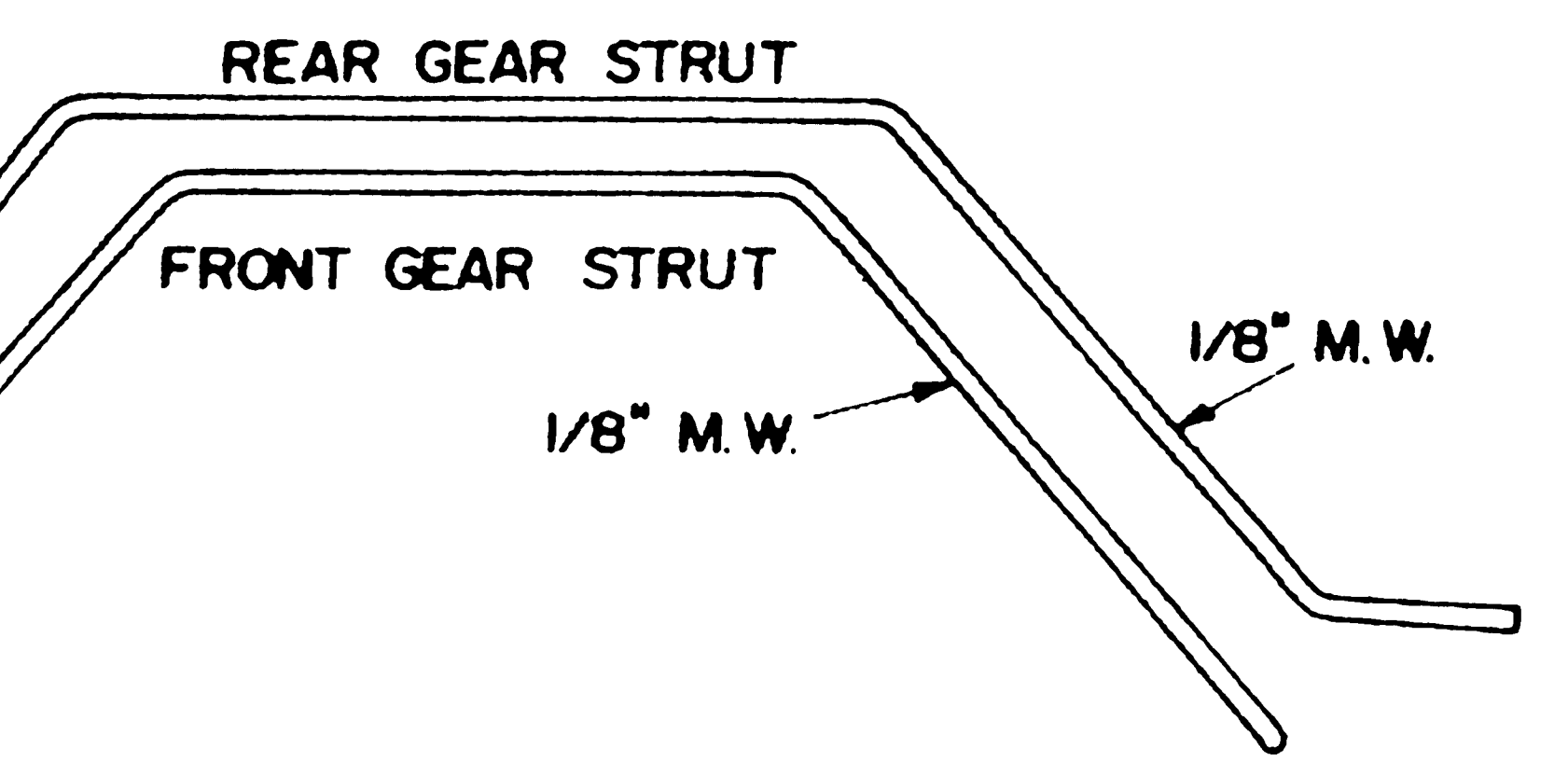
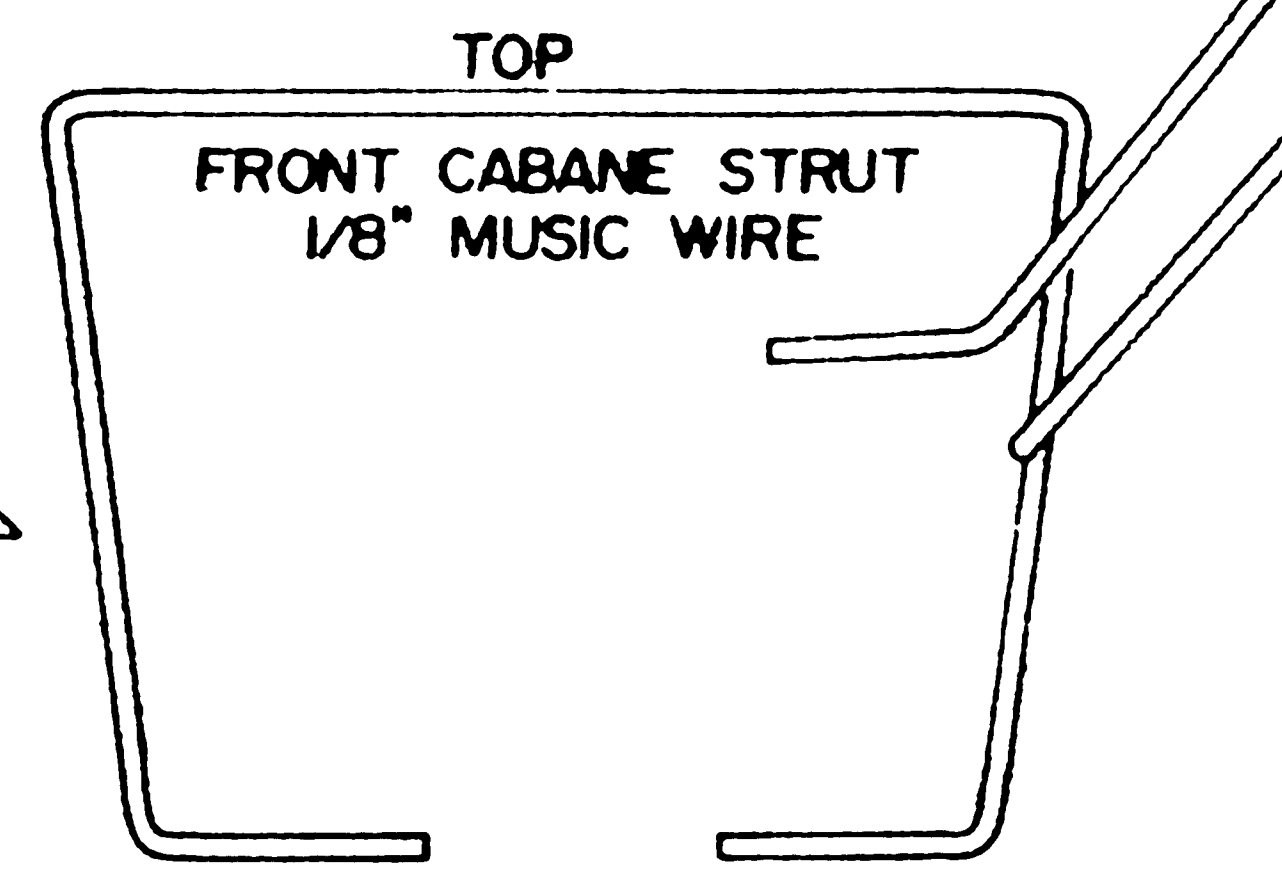
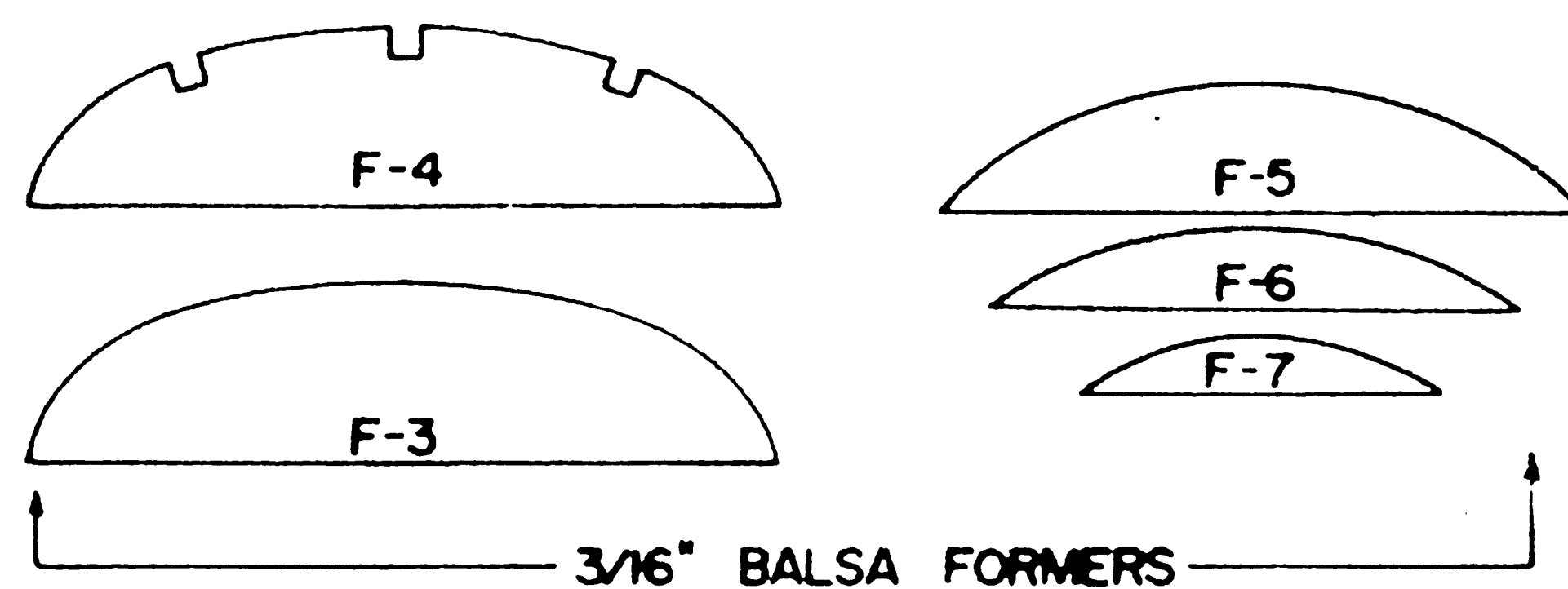
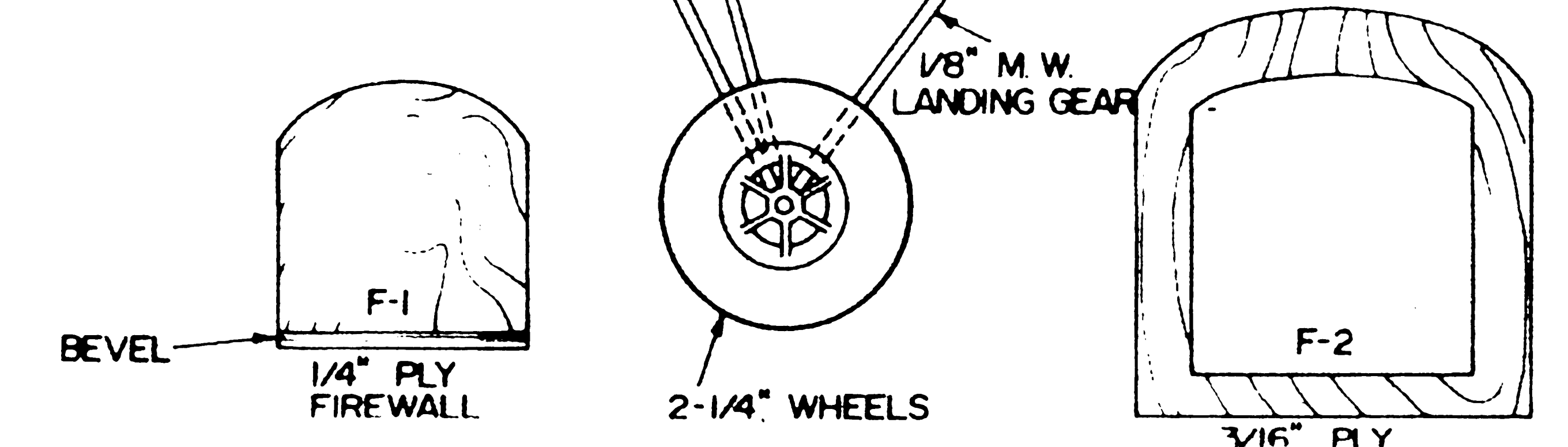
FUSELAGE TOP VIEW



REAR CABANE STRUT BRACE 1/8" MUSIC WIRE



FUSELAGE SIDE VIEW



1931 TWO PLACE SPORT TRAINER
NICHOLAS-BEAZLEY, NB-8G
SCALE 1-1/2" = 1' WING SPAN = 56-1/4"
ENGINE .09 - .15 3 CHANNEL
DESIGNED BY AL WOLSKY
TRACING BY JOE DEMARCO

