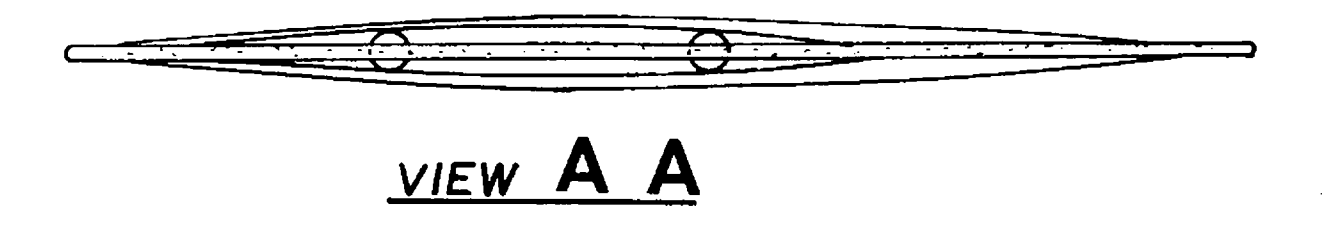
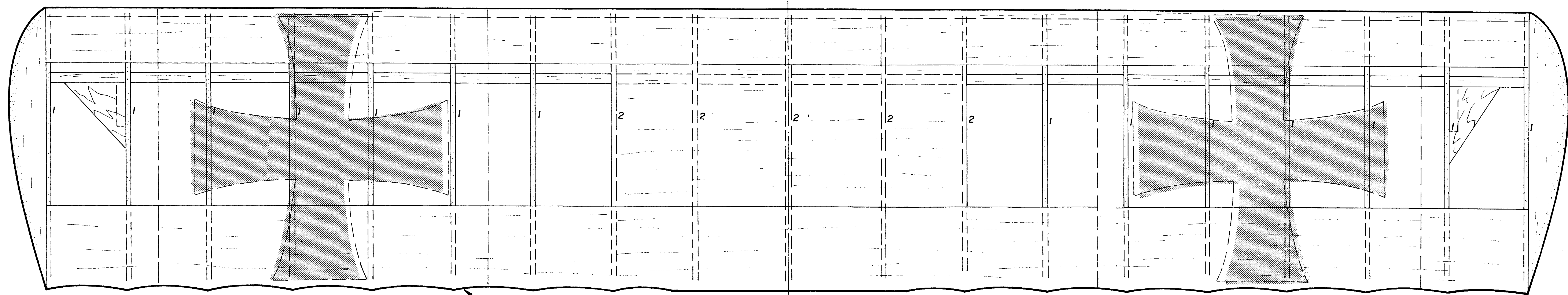


WING STRUT FASTENERS
 Wings are Fastened To Fuselage
 And Struts And Brackets Are
 Fit And Brackets Are Epoxied
 In That Position

FOKKER DR-I
 Designed by BRYCE PETERSEN
 Drawn by Al Novotnik
 Scanned and restored Jan., 2011 pdf
 Wing Area 880 sq. in.
 Power .46 to .60
 Weight 6 lbs. Dry



Top Wing

