

ACCESS HOLE TO REMOVE MUFFLER AIR

1 2 3

2° SIDE THRUST

FILL WITH Balsa BLOCKS AREA BETWEEN #1, 2, 3 EXCEPT EXHAUST SIDE OF ENGINE. USE #1 AS A GUIDE FOR SIZE AND SHAPE.

NYLON BLOCK-FASTEN TO ALUMINUM WITH SHEET METAL SCREWS.

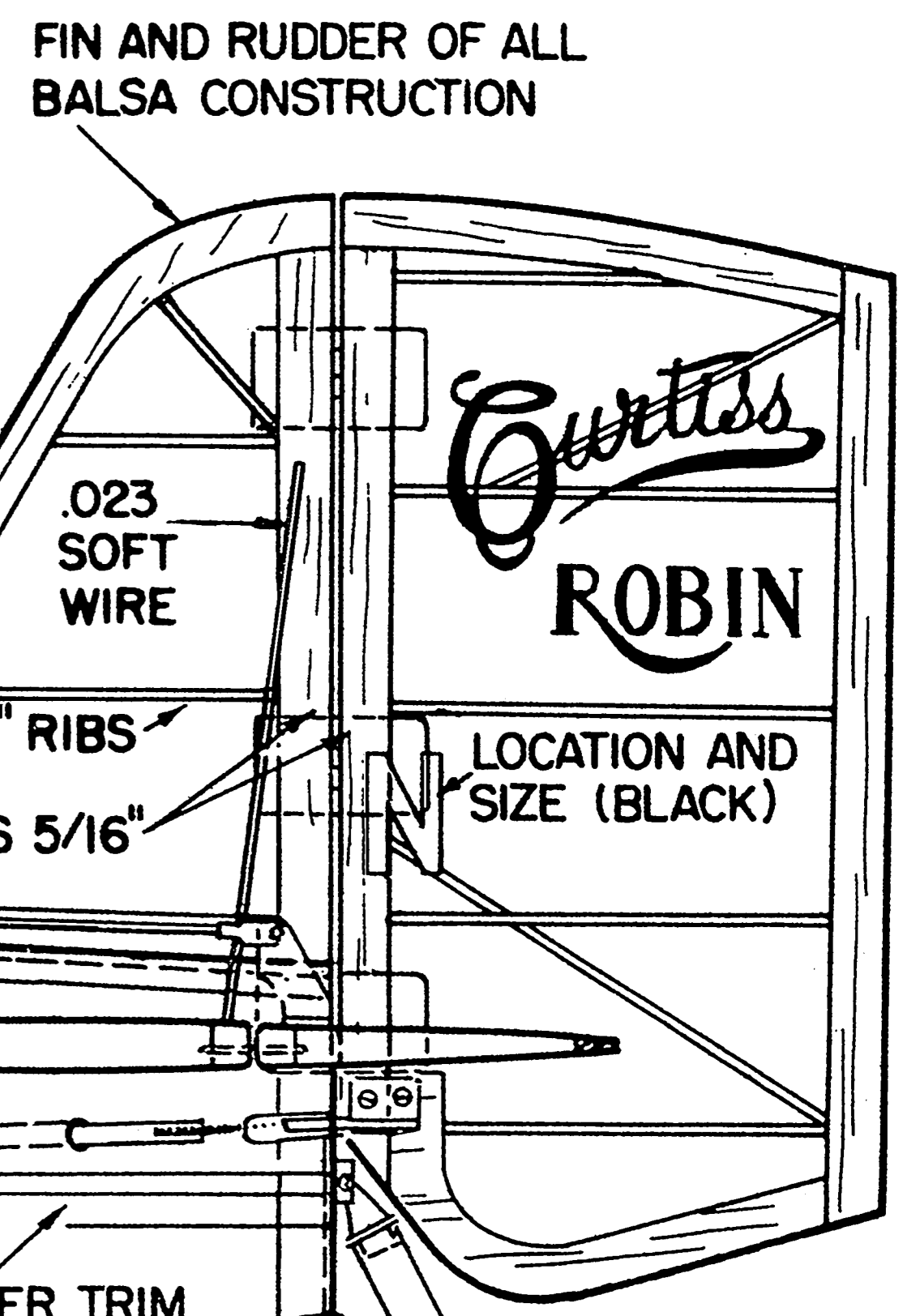
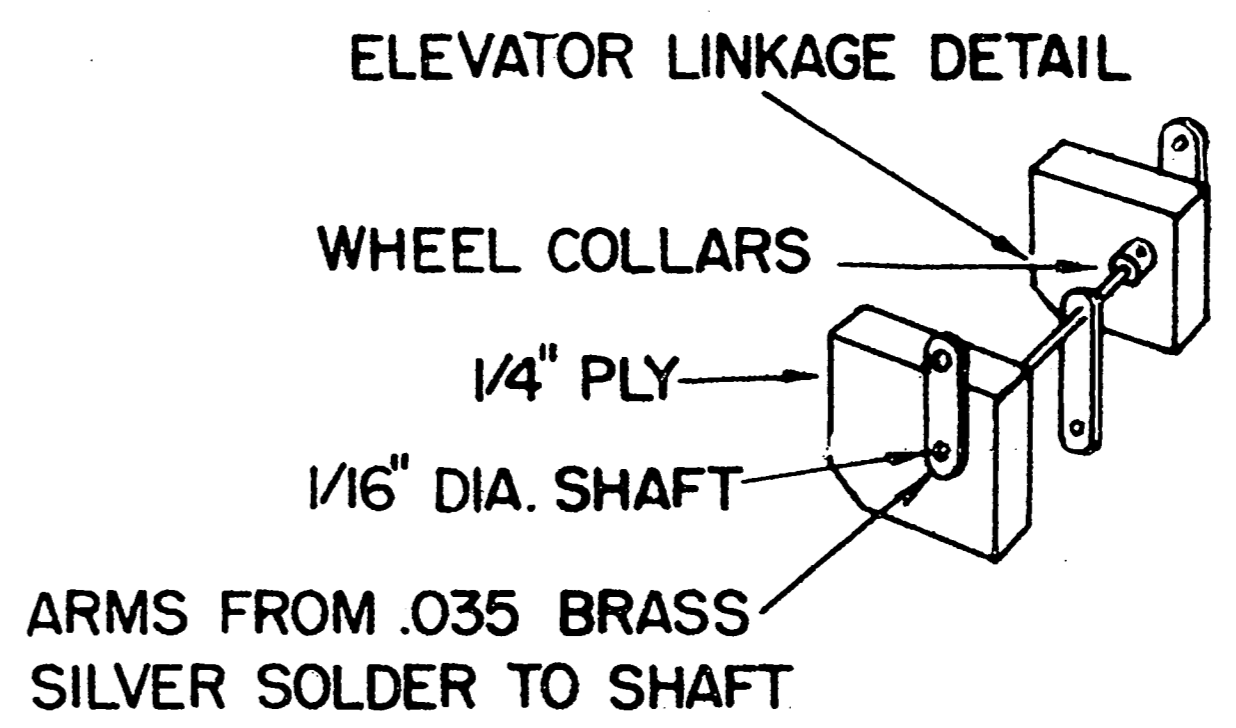
TAP FOR 1/4-20 BOLTS

LONGERONS OF 1/4" SPRUCE CROSS BRACES OF Balsa EXCEPT AS NOTED

AILERON MOUNT DETAIL

1/16" PLYWOOD

MOUNT FASTENED WITH SHEET METAL SCREWS



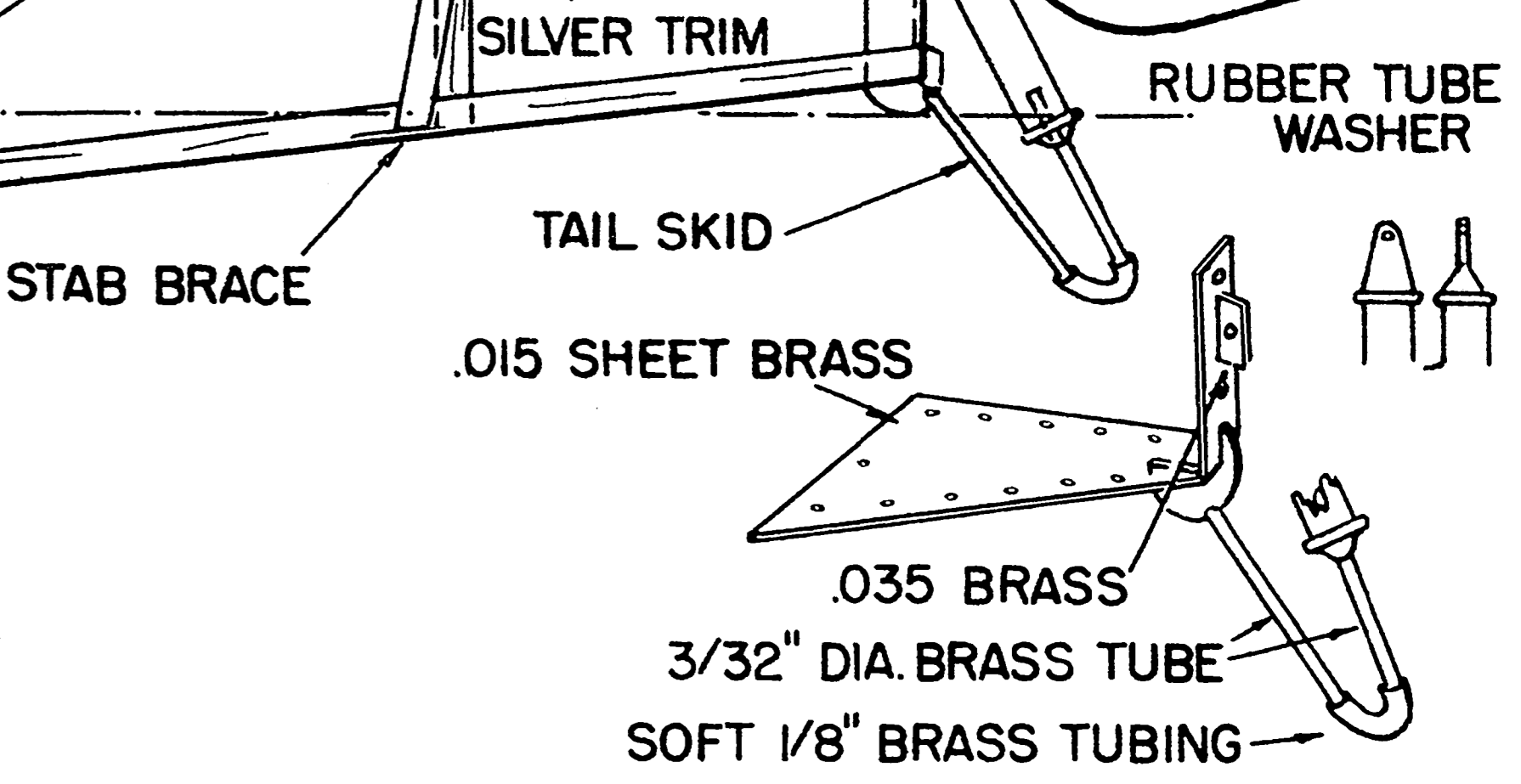
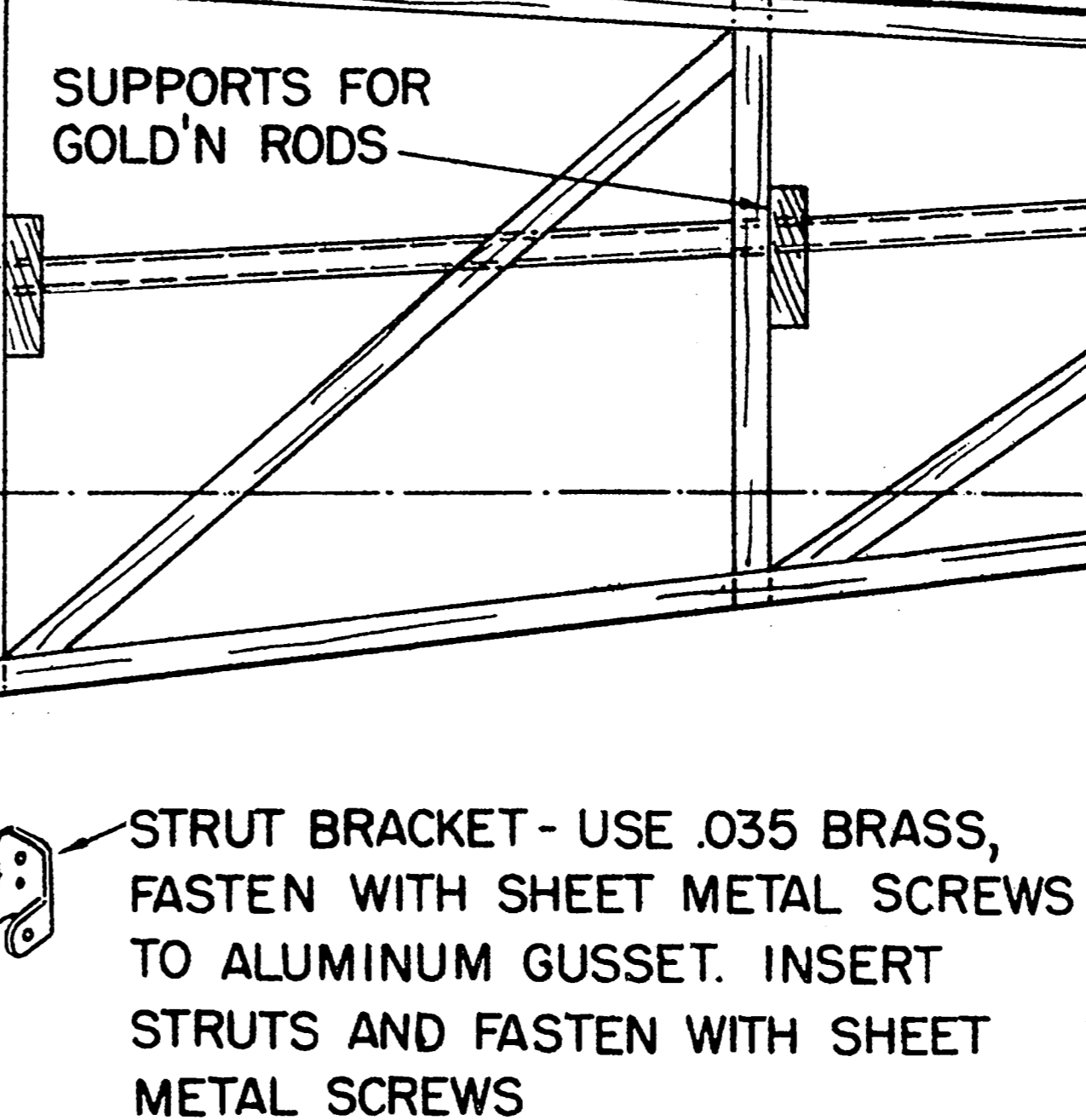
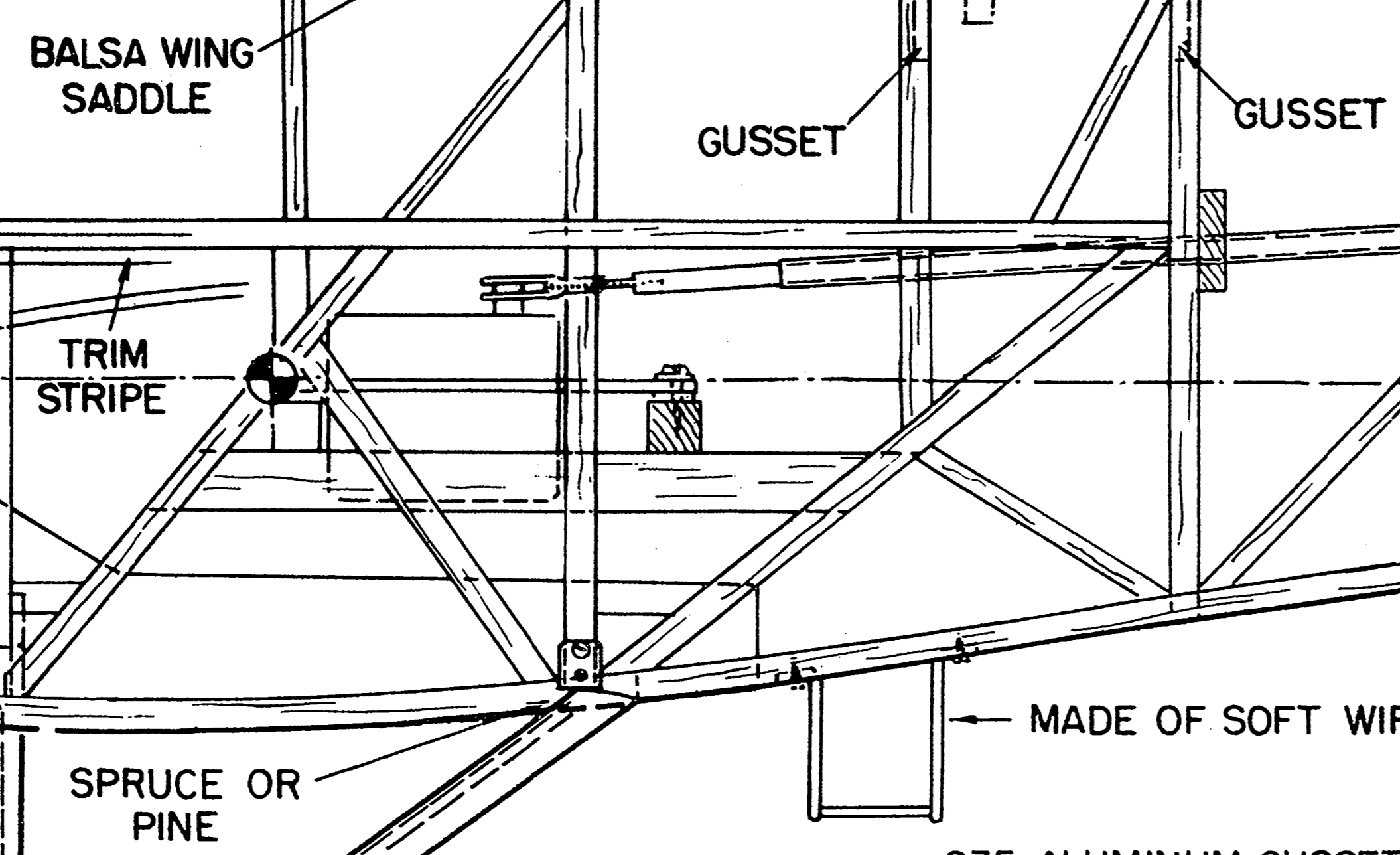
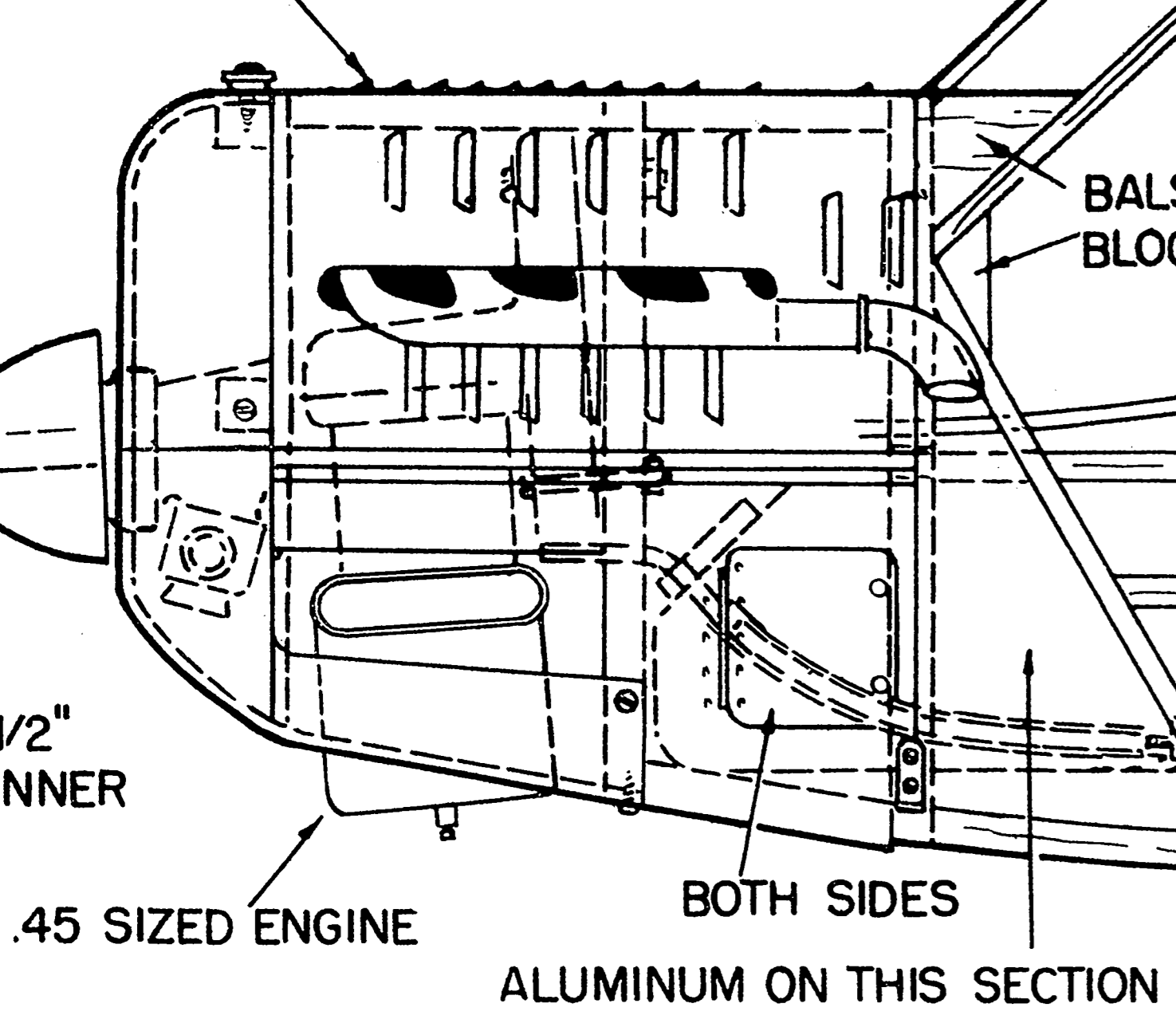
THE NOSE IS COVERED WITH PIECES OF .007 ALUMINUM WITH AIR VENTS FORMED

SKYLIGHT

AILERON HINGE

MODEL SILK COVERED - BURNT ORANGE FUSELAGE, YELLOW WING AND TAIL

DOORS ON RIGHT SIDE OF MODEL ONLY

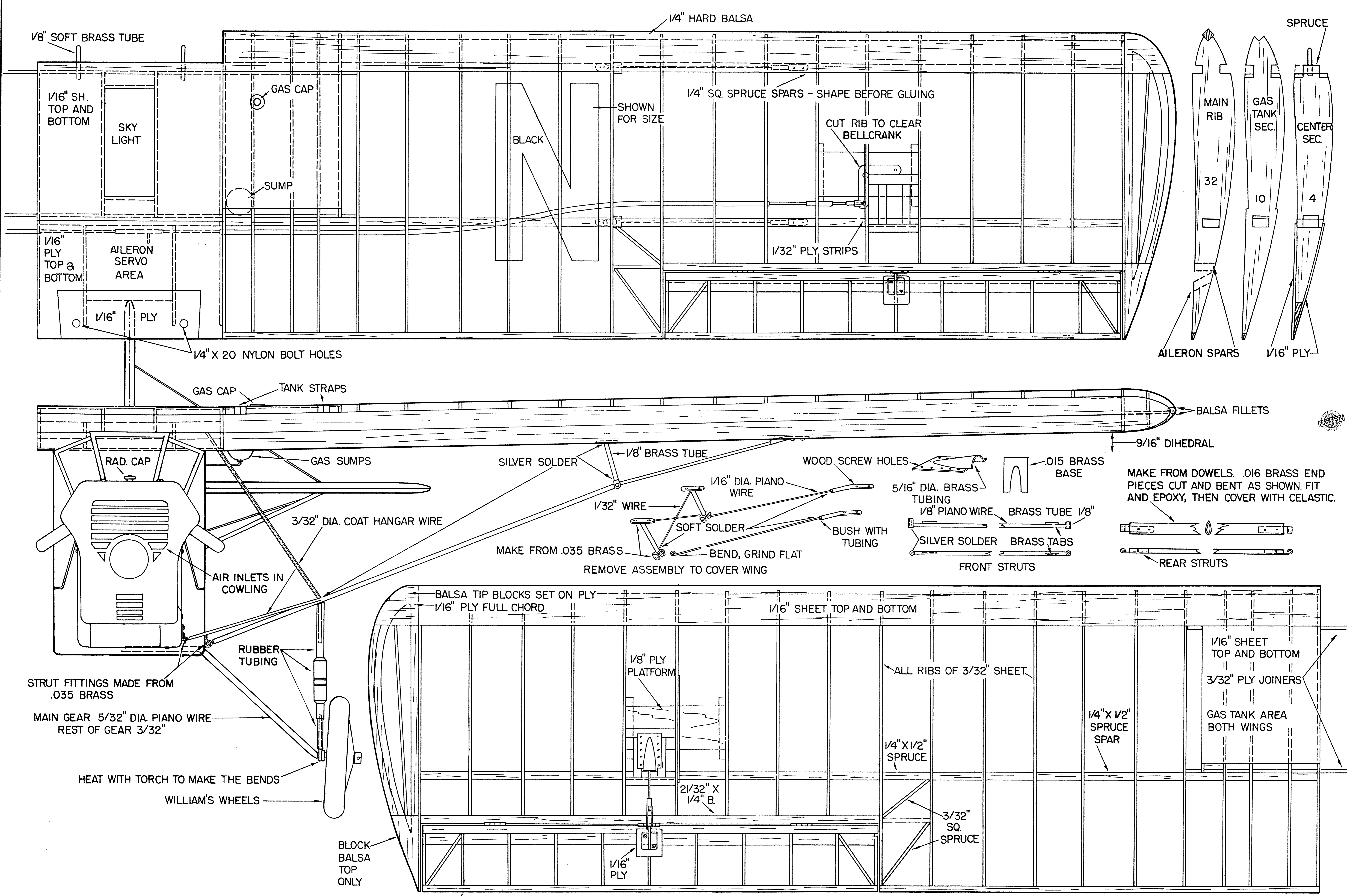


EXHAUST STACKS CAN BE REVERSED IF NEEDED

.035 ALUMINUM GUSSETS - BEND AS PER TOP VIEW, SECURE TO FUSELAGE SIDES. SLIDE BULKHEADS #2 AND #3 IN POSITION AND SECURE.

### 1928 CURTISS ROBIN

RADIO CONTROL SCALE - 1-1/2" = 1' WINGSPAN 61-1/2" WEIGHT 5 LBS.  
DESIGNED AND PENCILS BY BILL ANTOINE SHEET 1 OF 2



# 1928 CURTISS ROBIN

SHAPE TRAILING EDGE FROM 1/8" X 3/16" SPRUCE