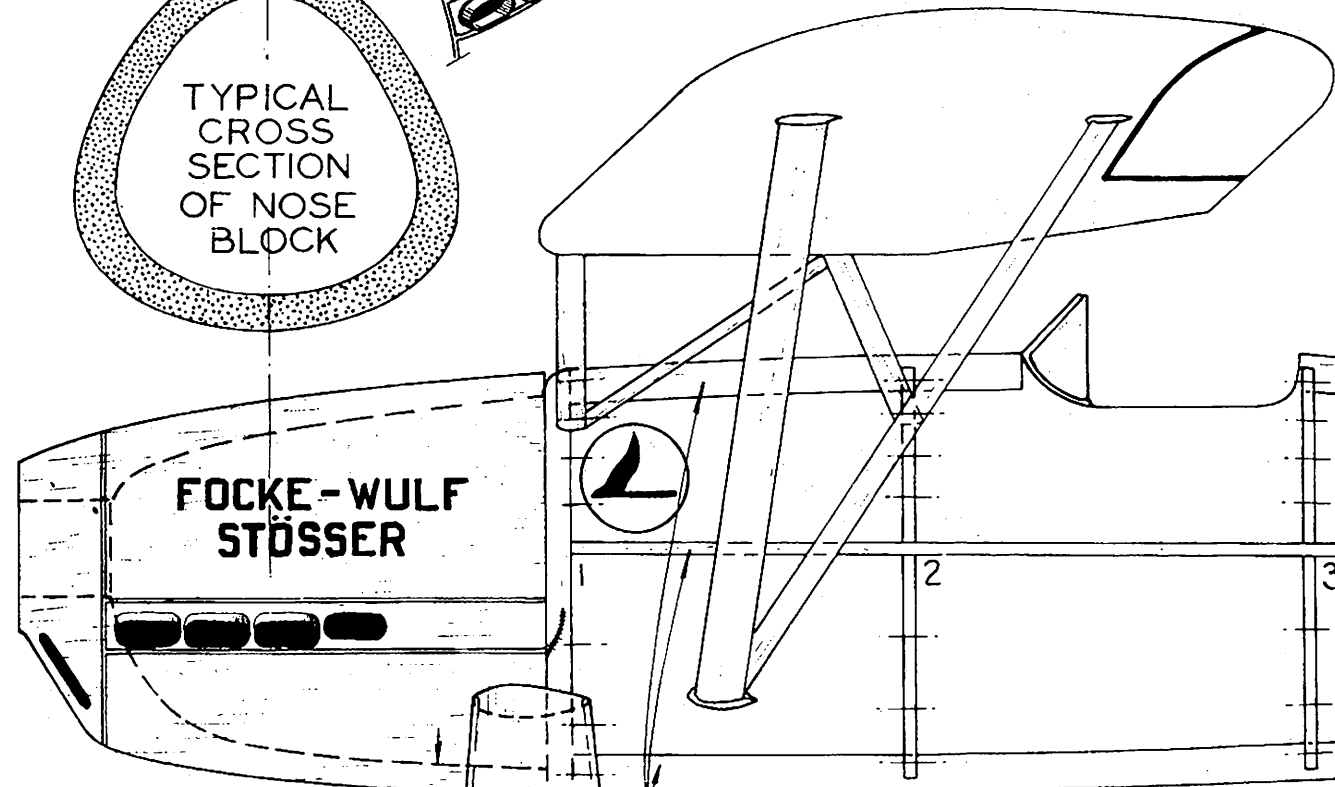
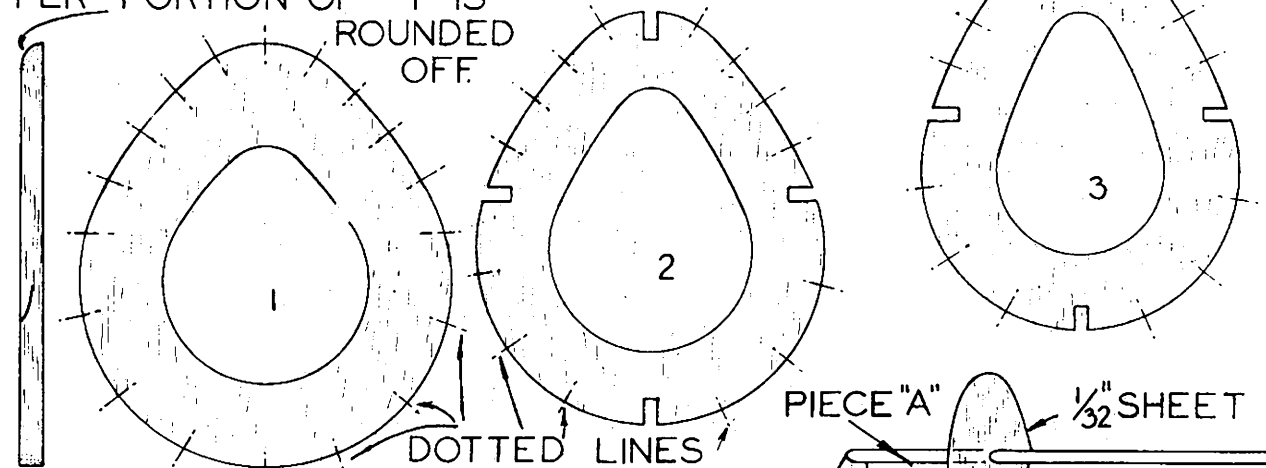
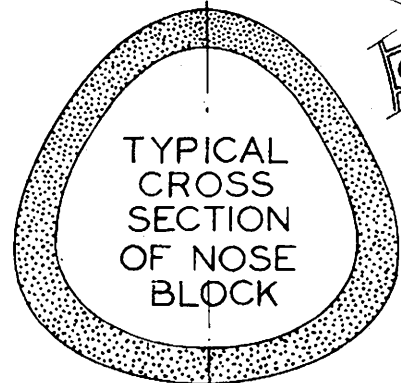


DUMMY EXHAUST STACKS (FLATTENED TUBING)

FORMER #1 IS $\frac{1}{8}$ " THICK
FORMERS #2 TO #7 ARE $\frac{1}{16}$ " THICK

UPPER PORTION OF #1 IS ROUNDED OFF



D-IKNI

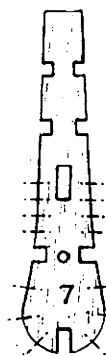
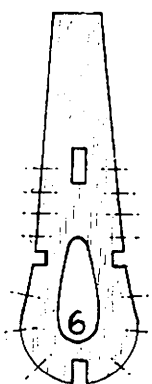
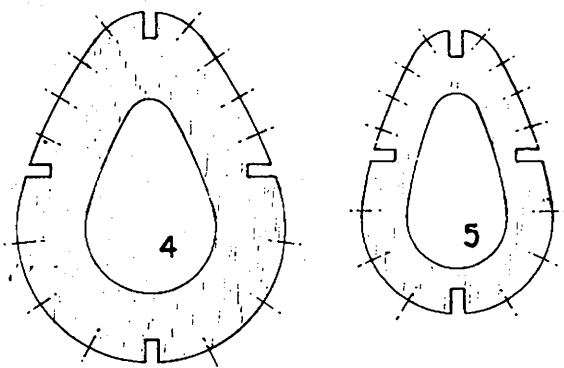
REAR OF COWL APPROXIMATELY $\frac{1}{8}$ " THICK

MASTER STRINGERS $\frac{1}{16}$ " SHEET Balsa (SEE TEXT)

STEP

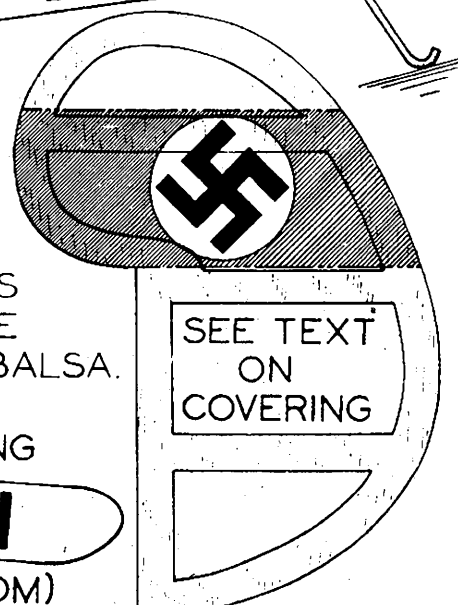
NOTE THAT REAR HOOK AND TAIL SKID ARE FORMED FROM SAME PIECE OF WIRE. RUDDER IS CUT IN ONE PIECE FROM $\frac{1}{16}$ " SHEET Balsa.

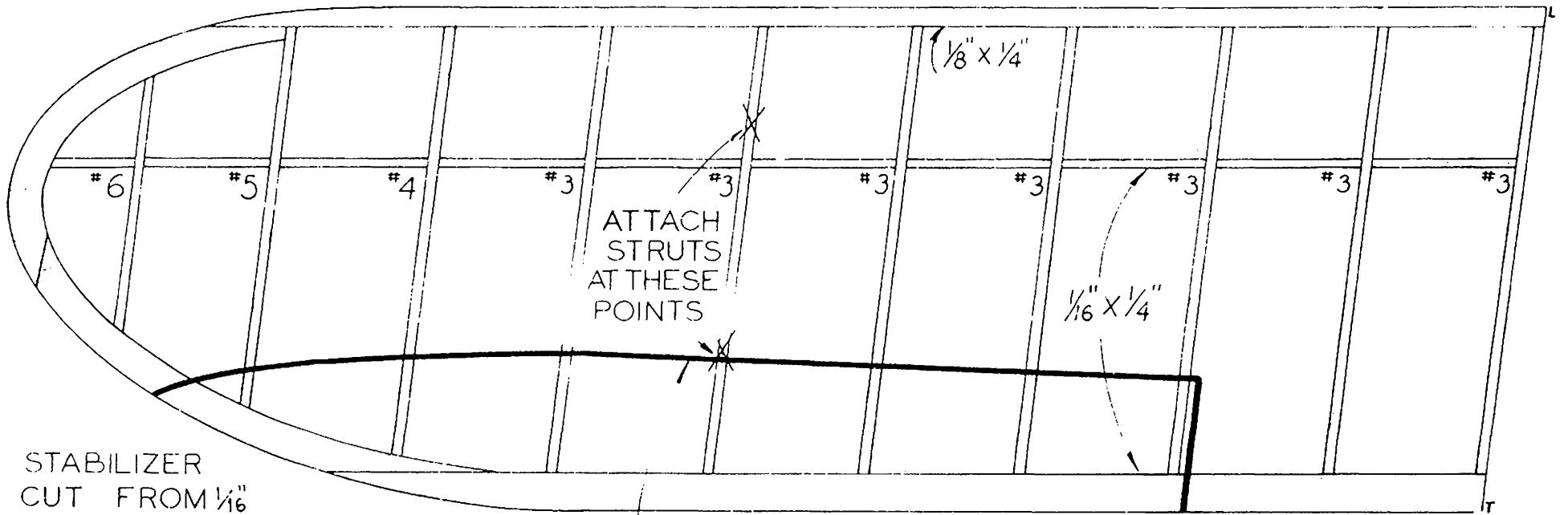
$\frac{1}{4}$ " Balsa WHEELS



WING LETTERING
D-I KNI
(TOP AND BOTTOM)

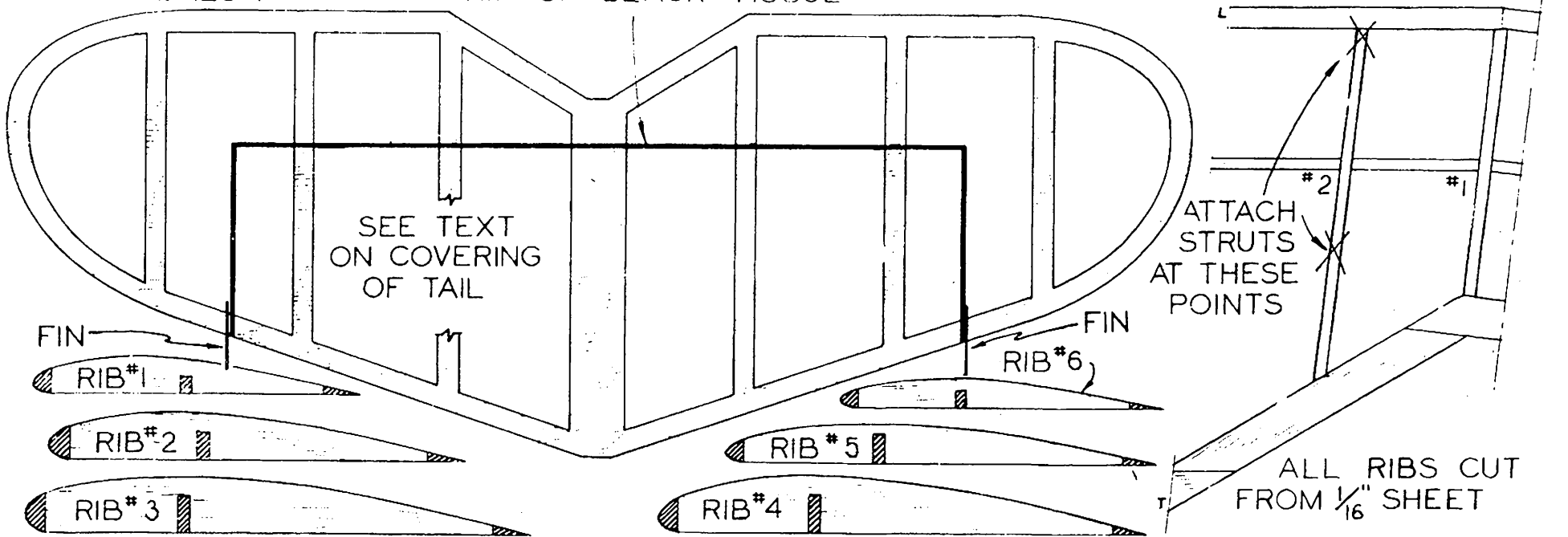
SEE TEXT ON COVERING





STABILIZER
CUT FROM $\frac{1}{16}$ "
SHEET Balsa

STRIP OF BLACK TISSUE

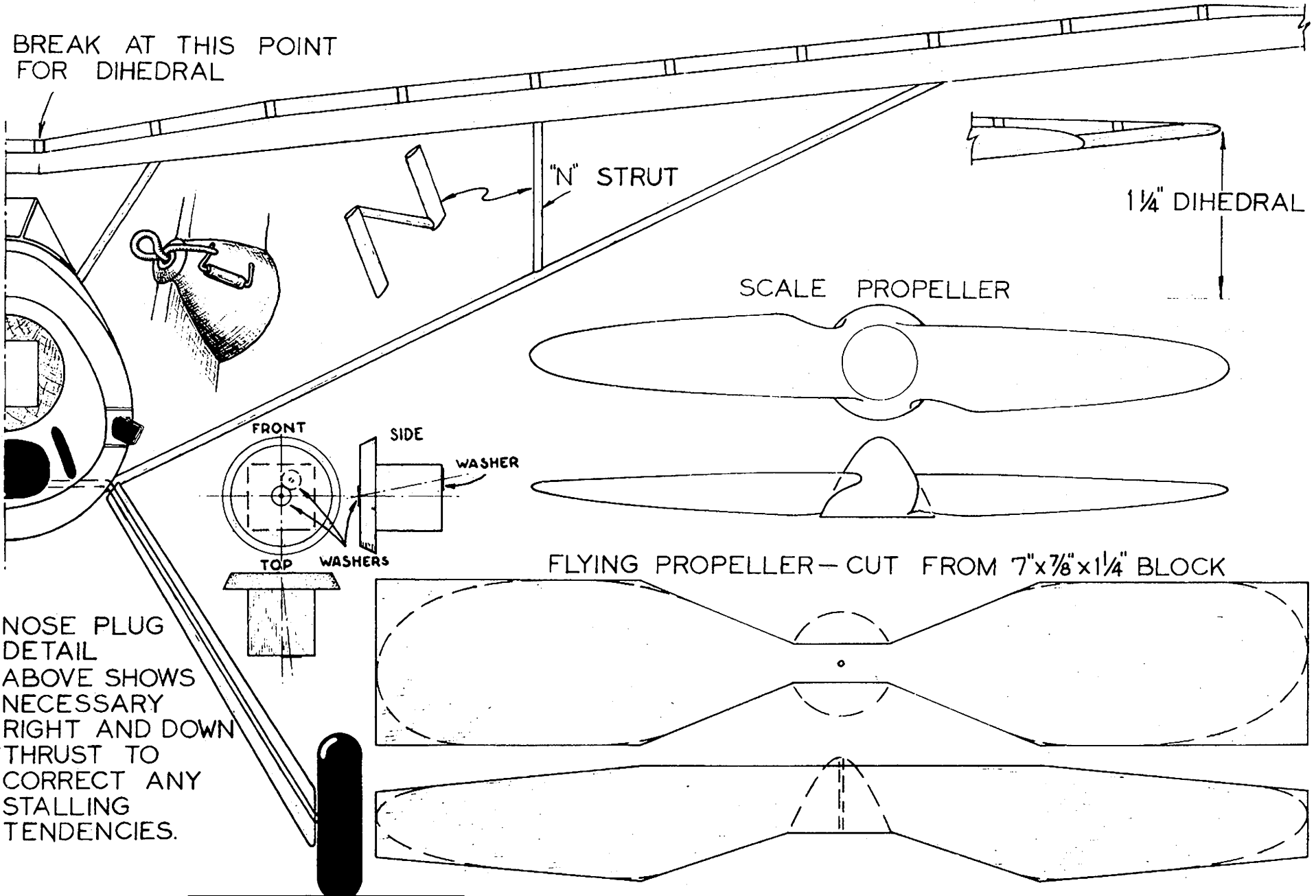


SEE TEXT
ON COVERING
OF TAIL

ATTACH
STRUTS
AT THESE
POINTS

ALL RIBS CUT
FROM $\frac{1}{16}$ " SHEET

BREAK AT THIS POINT
FOR DIHEDRAL



"N" STRUT

1/4" DIHEDRAL

SCALE PROPELLER

FRONT

SIDE

WASHER

TOP

WASHERS

FLYING PROPELLER—CUT FROM 7"x7/8"x1/4" BLOCK

NOSE PLUG
DETAIL
ABOVE SHOWS
NECESSARY
RIGHT AND DOWN
THRUST TO
CORRECT ANY
STALLING
TENDENCIES.