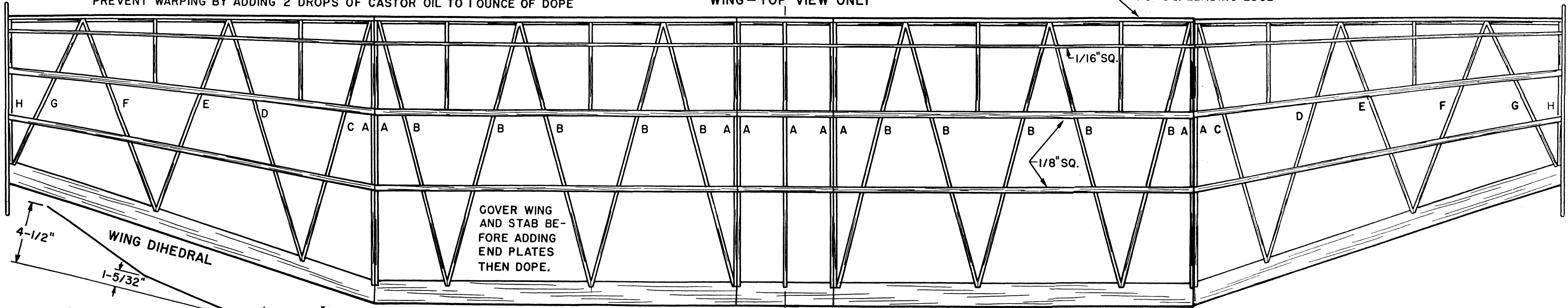


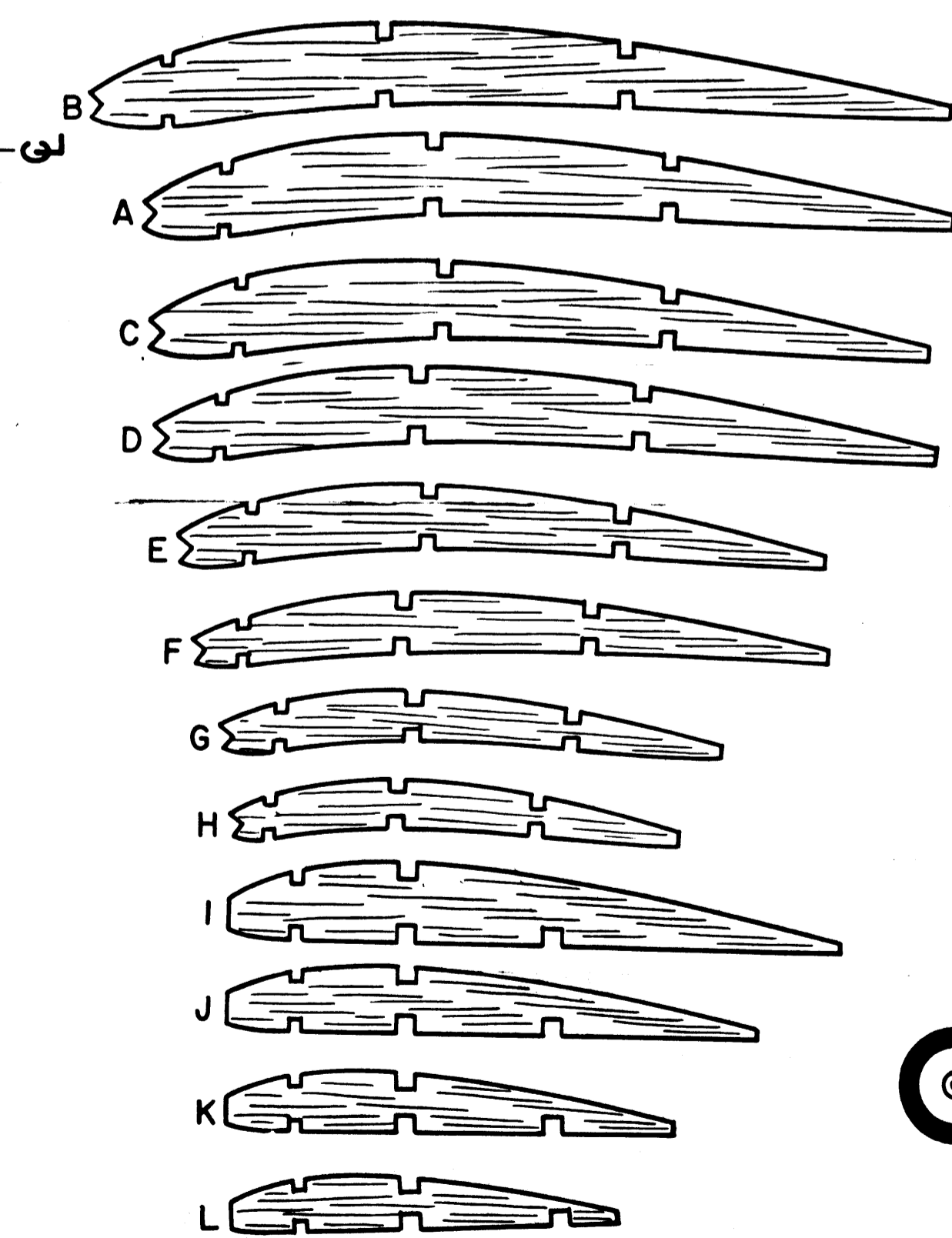
COVER ALL SURFACES WITH LIGHT GRADE TISSUE  
PREVENT WARPING BY ADDING 2 DROPS OF CASTOR OIL TO 1 OUNCE OF DOPE

WING - TOP VIEW ONLY

1/8" SQ. LEADING EDGE



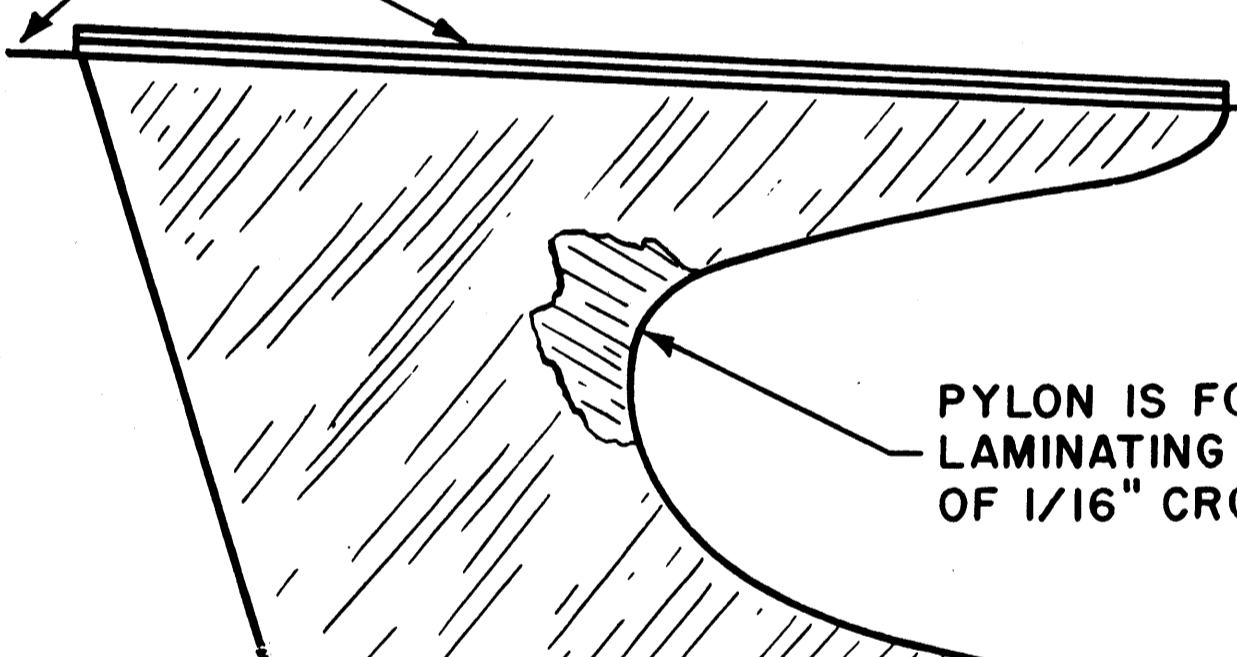
WING RIBS  
1/16" SHEET



STABILIZER RIBS 1/16" SHEET

3/64" DIA. WIRE

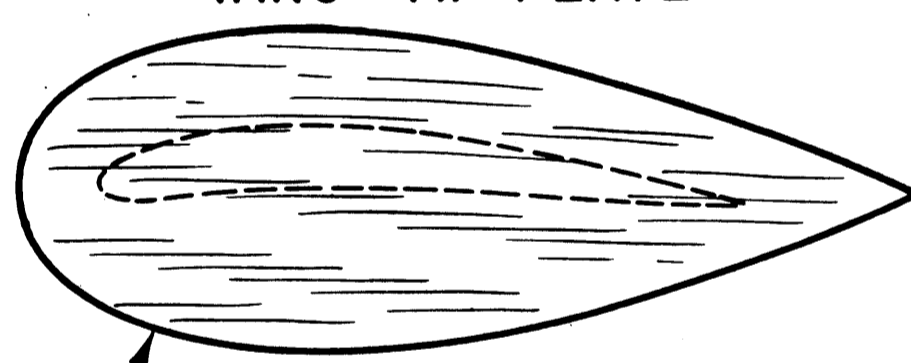
WING PLATFORM



PYLON IS FORMED BY LAMINATING TWO SHEETS OF 1/16" CROSS-GRAIN

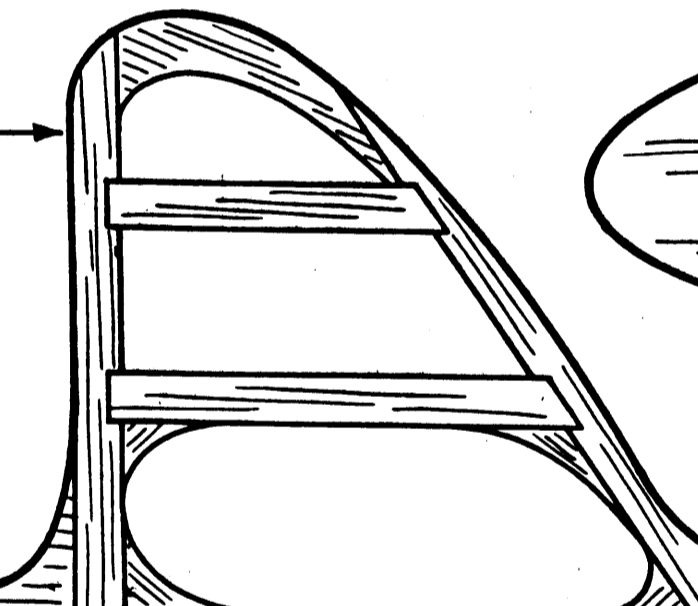
MOUNT TEMPLATE

WING - TIP PLATE

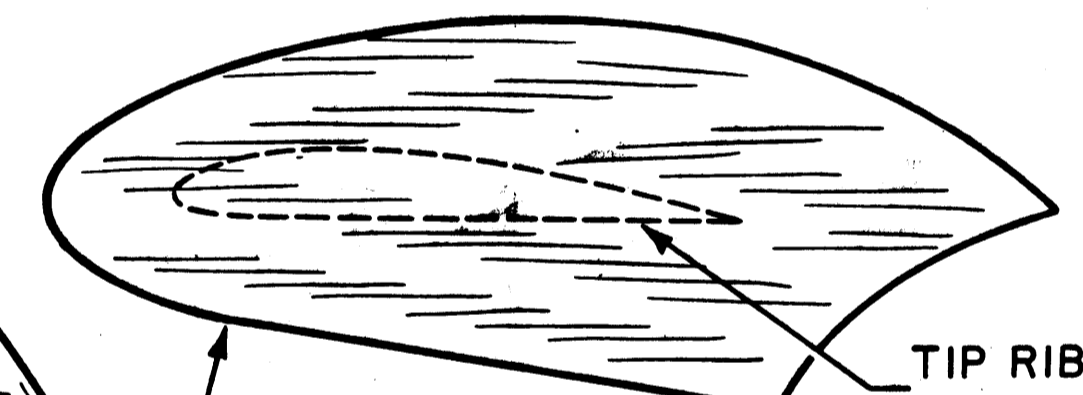


CUT TWO FROM 1/16" SHEET MEDIUM Balsa - SAND AND TISSUE COVER

FORM THE RUD-  
DER FROM 1/16"

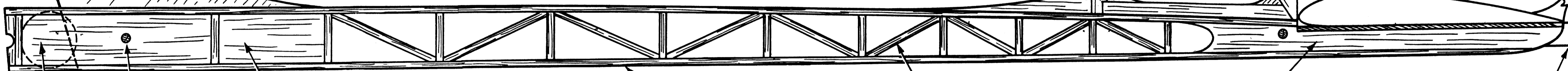


STABILIZER - TIP PLATE



CUT TWO FROM 1/16" MEDIUM SHEET COVER WITH TISSUE

TIP RIB LOCATION



TIMER 1/8" DOWEL

FILL IN NOSE SECTION WITH 1/8" SHEET Balsa

**BATIRI**

FUSELAGE - TOP VIEW

FUSELAGE STRINGERS 1/8" SQ. MEDIUM HARD Balsa. MATCH STRENGTH

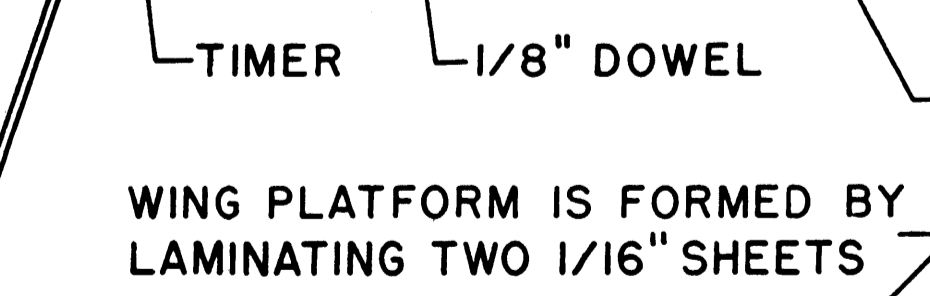
DO NOT OMIT THE FUSELAGE DIAGONALS

LANDING GEAR STRUT

FILL WITH 1/8" SHEET PLYWOOD LAND-  
ING GEAR PLATFORM

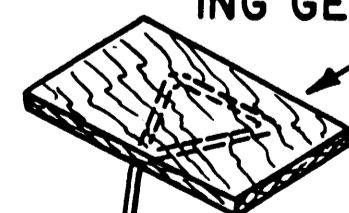
DETHERMALIZER HOOKS

STABILIZER PLATFORM LAMINATED FROM 1/16" SHEET

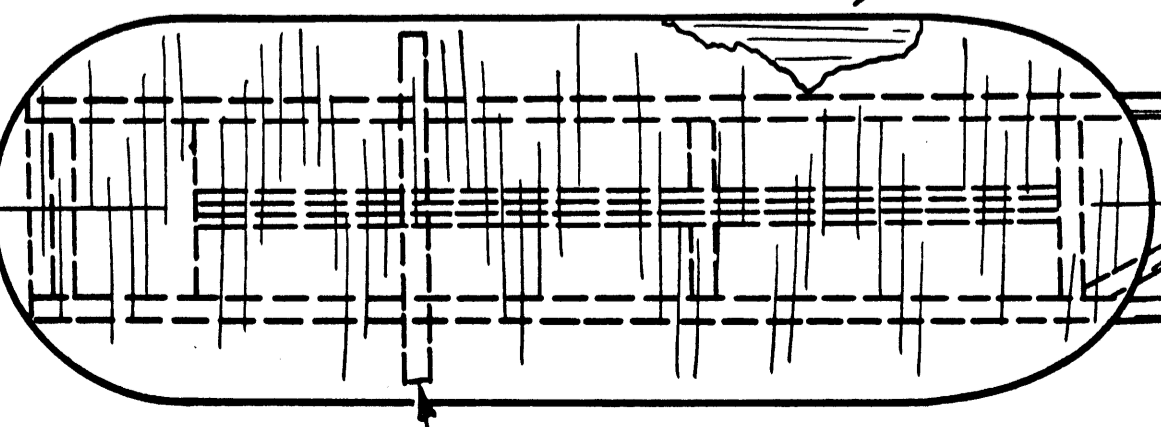


WING PLATFORM IS FORMED BY LAMINATING TWO 1/16" SHEETS

3/64" DIA. WIRE



1/8" HARDWOOD DOWEL



1/8" HARDWOOD DOWEL

STABILIZER - TOP VIEW

1/8 X 1/4" LEADING EDGE

1/16" SQ.  
1/8" SQ.  
1/8" SQ.

3/32" X 3/8" TRAILING EDGE

MODEL SHOULD BALANCE APPROXIMATELY 1/2" IN FRONT OF TRAILING EDGE

