

U.S.C.G.
V835

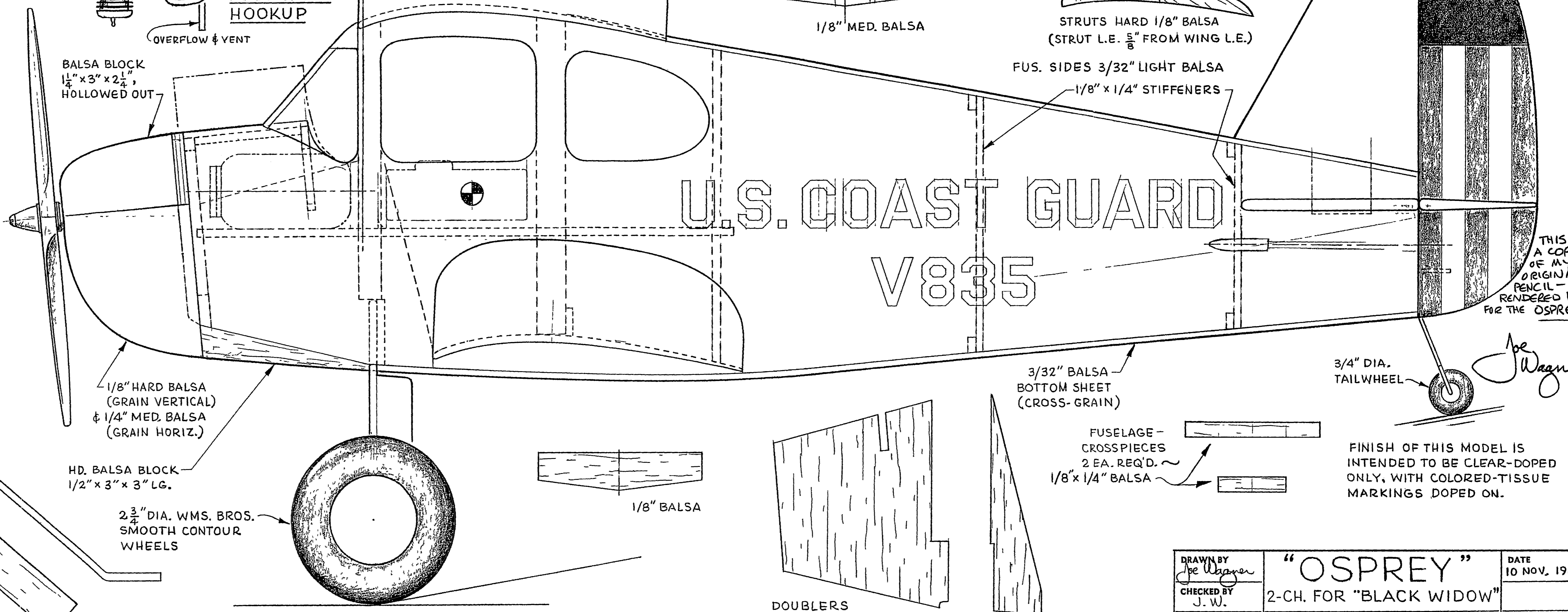
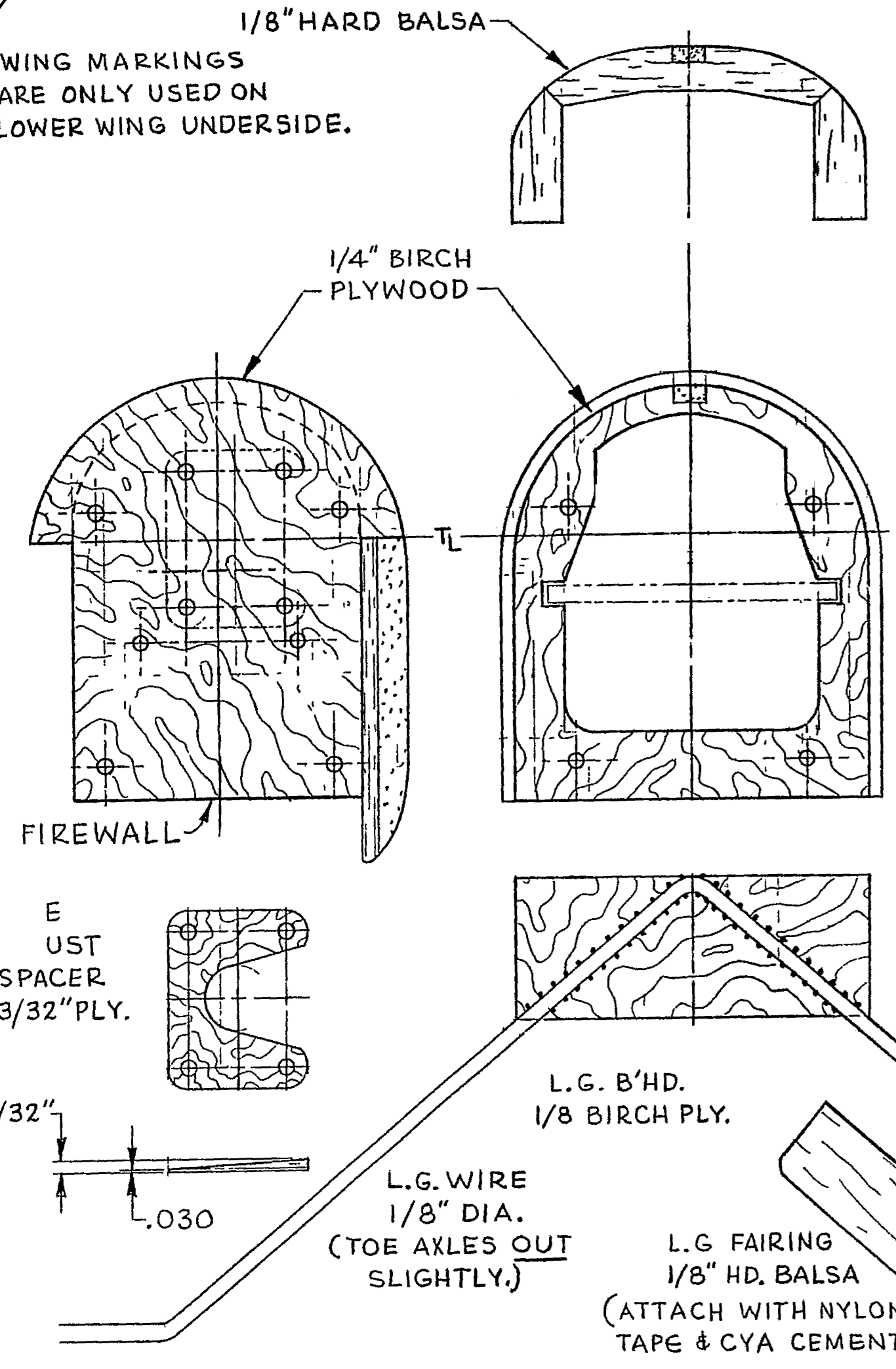
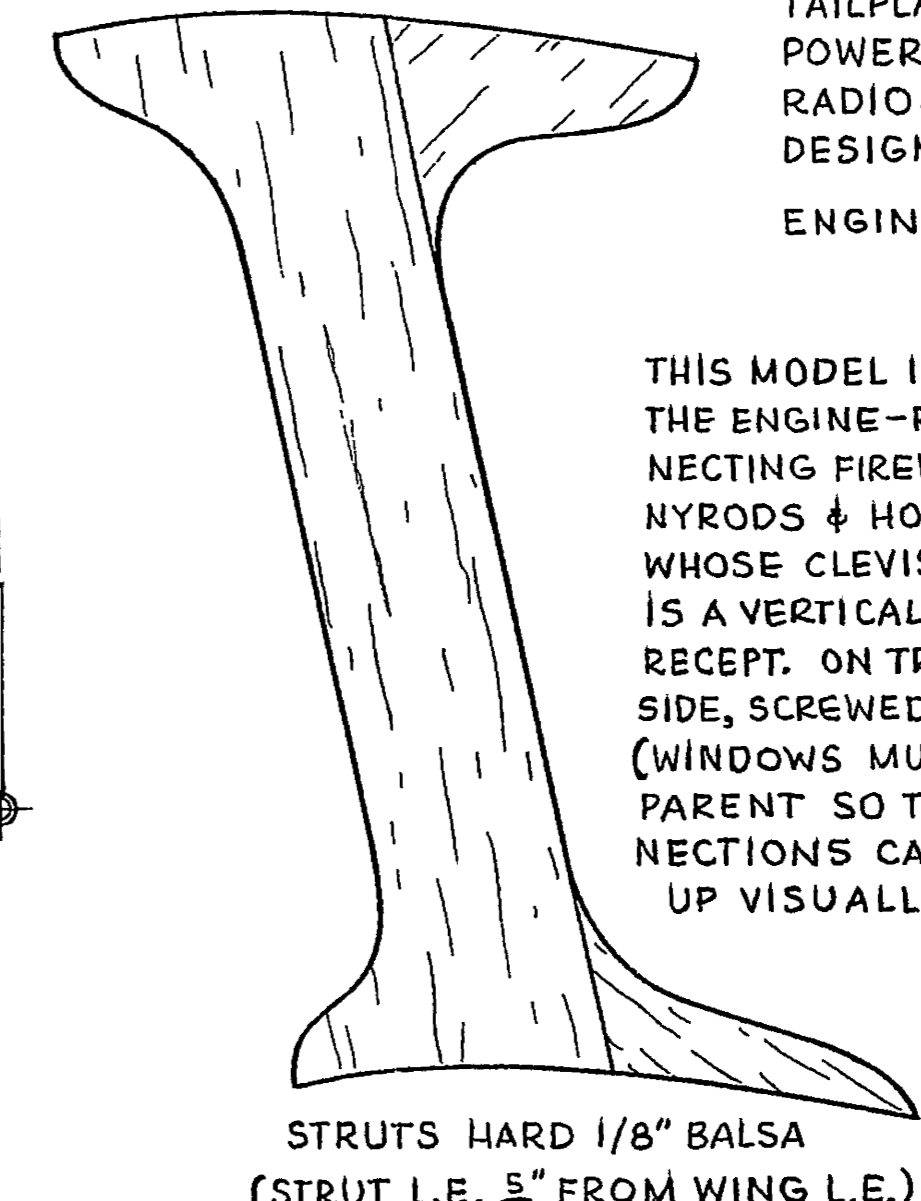
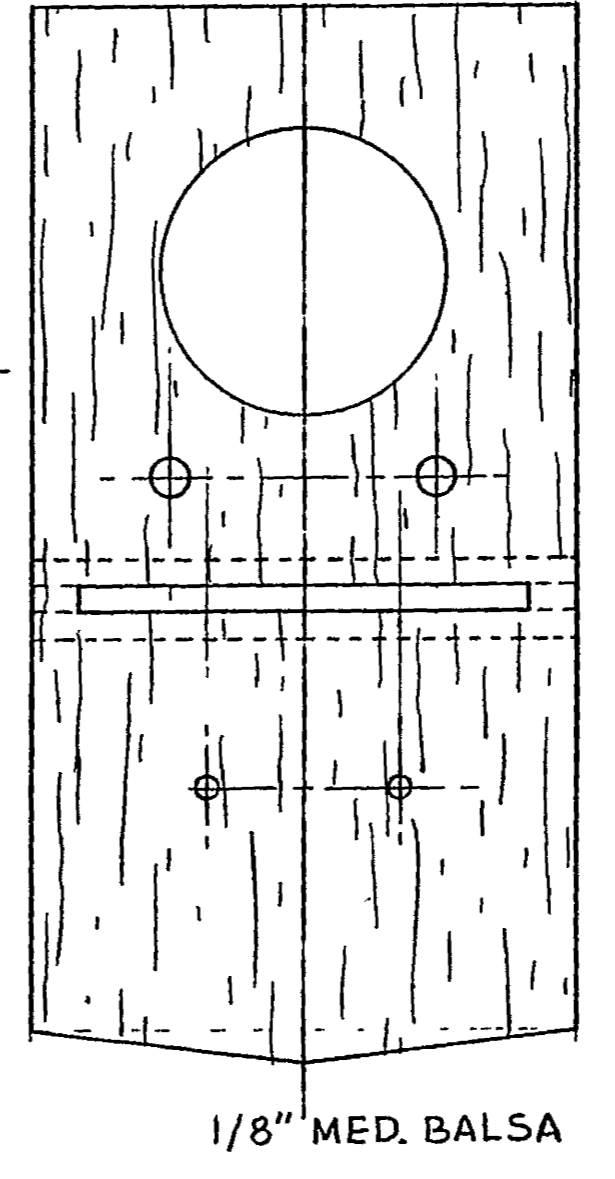
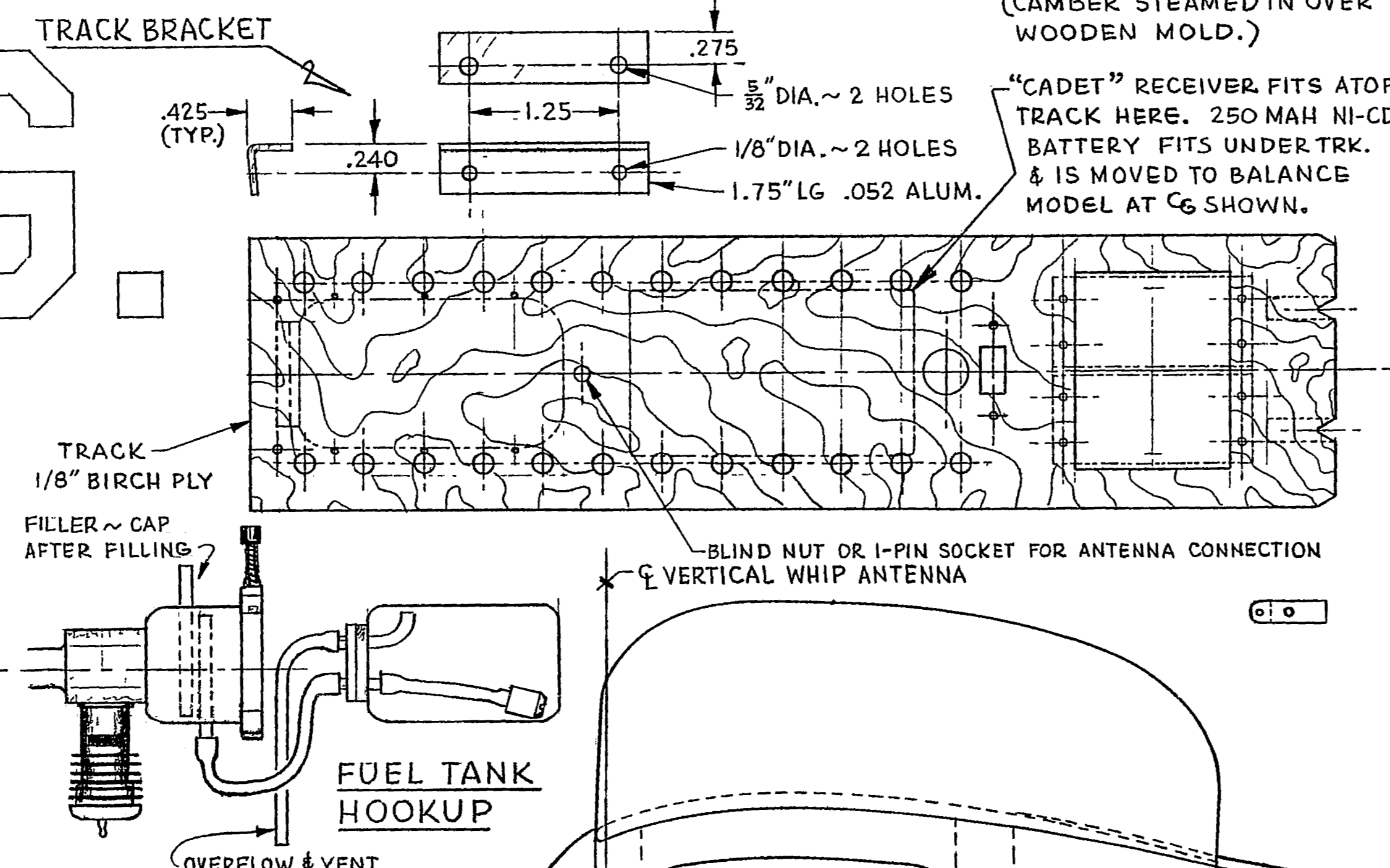
DESIGN DATA

WINGSPAN: 30" (BOTH); CHORD: 5 1/4"; NET AREA: 300 IN²
 DIHEDRAL: 6°45' = 1 3/4" UNDER EACH TIP. STAGGER: 12 1/2"
 GAP \approx 1 CHORD, INCIDENCE: +2 1/2° (BOTH)

TAILPLANE AREA \approx 60 IN² = 20% WING AREA
 POWER: COX "BLACK WIDOW".049; GRAUPNER 7-3 PROP.
 RADIO: COX "CADET" 2-CH. (R & E) w. 250 MAH. BATTERY
 DESIGN WT: 26 OZ. MAX. (LOADING: 8.7 OZ./100 IN²)
 ENGINE SETTINGS: 3 1/2° RIGHT; 5° DOWN.

SPECIAL FEATURES

THIS MODEL IS BUILT IN 2 MAJOR UNITS: THE AIRFRAME, & THE ENGINE-R/C UNIT, WHICH REMOVES VIA 4 SCREWS CONNECTING FIREWALL TO NOSE IBHD. PUSHRODS ARE SEMI-FLEX. NYRODS & HORN-CLEVIS ASSEM. IS ROCKET CITY MINI-TYPE, WHOSE CLEVIS PASSES THRU NYROD OUTER TUBE. ANTENNA IS A VERTICAL WHIP, INSTALLED THRU TOP WING C.S. INTO A RECEPT. ON TRACK. SWITCH IS ACTUATED BY A WIRE THRU FUS. SIDE, SCREWED INTO KNOB OF SWITCH. (WINDOWS MUST BE TRANSPARENT SO THESE CONNECTIONS CAN BE LINED UP VISUALLY.)



FIN & RUDDER LIGHT 3/16" Balsa

THIS IS A COPY OF MY ORIGINAL PENCIL-RENDERED PLAN FOR THE OSPREY.

Joe Wagner

DRAWN BY <i>Joe Wagner</i>	"OSPREY"	DATE 10 NOV. 1985
CHECKED BY J.W.	2-CH. FOR "BLACK WIDOW"	
SCALE FULL SIZE		