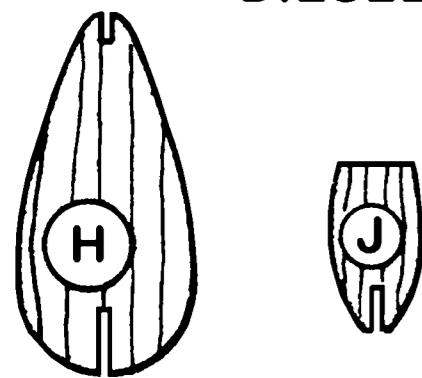
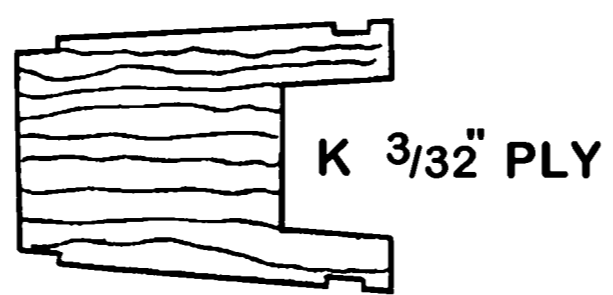


ENGINE I - 1.5 CC DIESEL

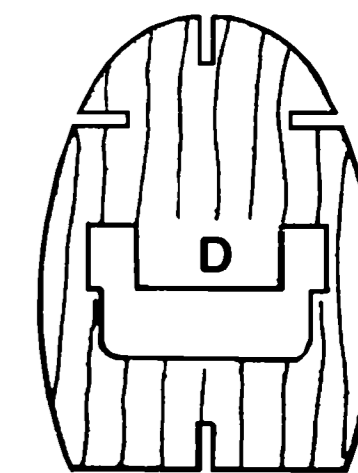
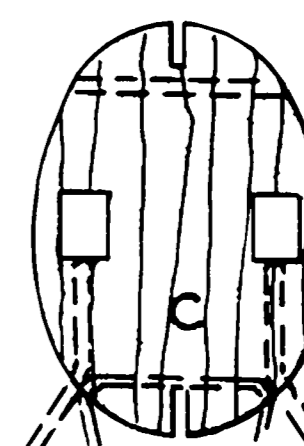
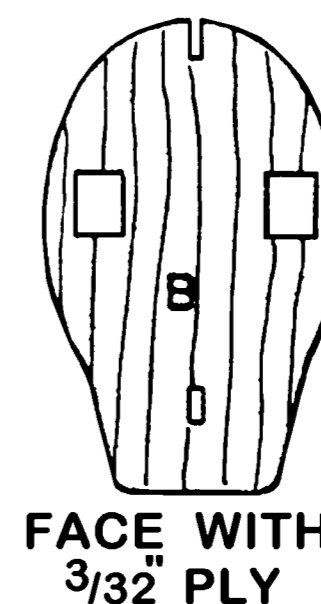
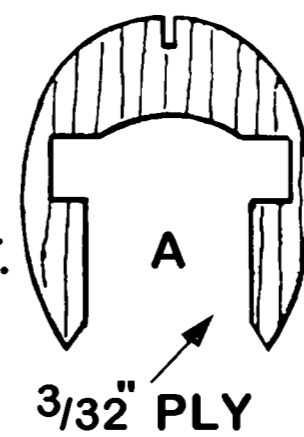


BEARERS 1/4" x 5/16" HARDWOOD

22 G LEADOUT

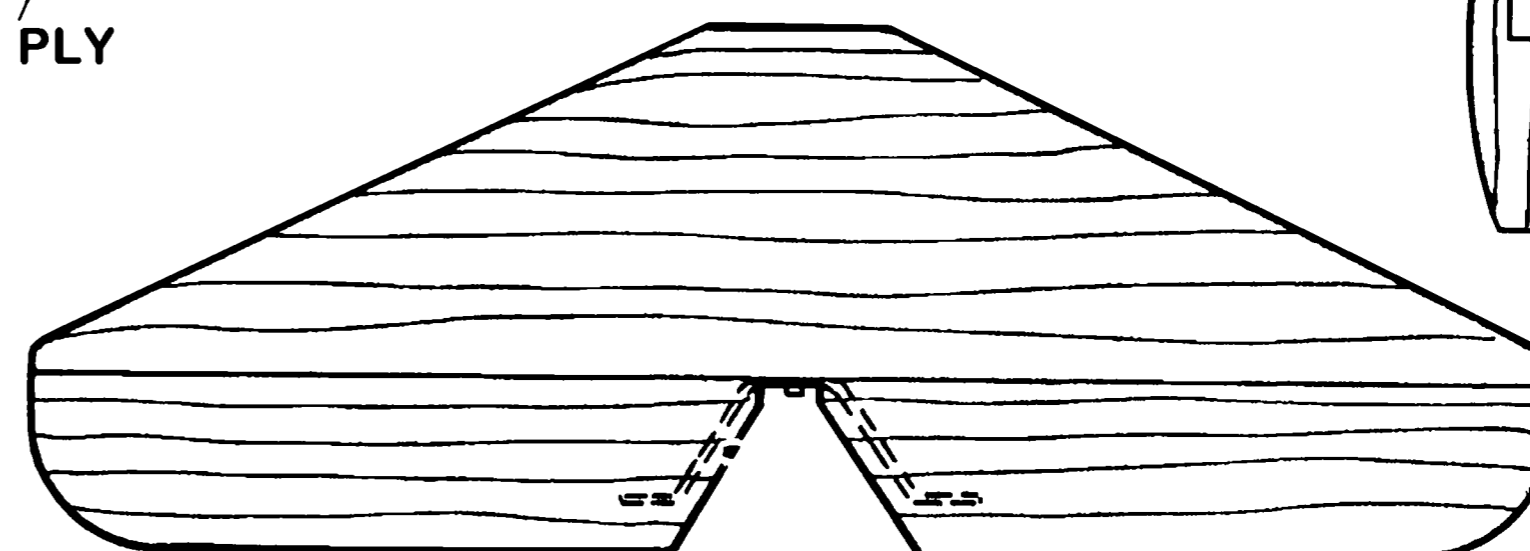
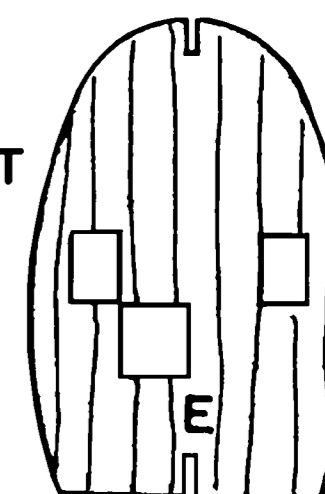
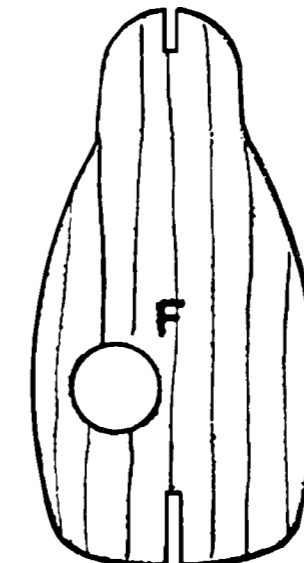


FIN AND RUDDER 1/8" SHT.



FACE WITH 3/32" PLY

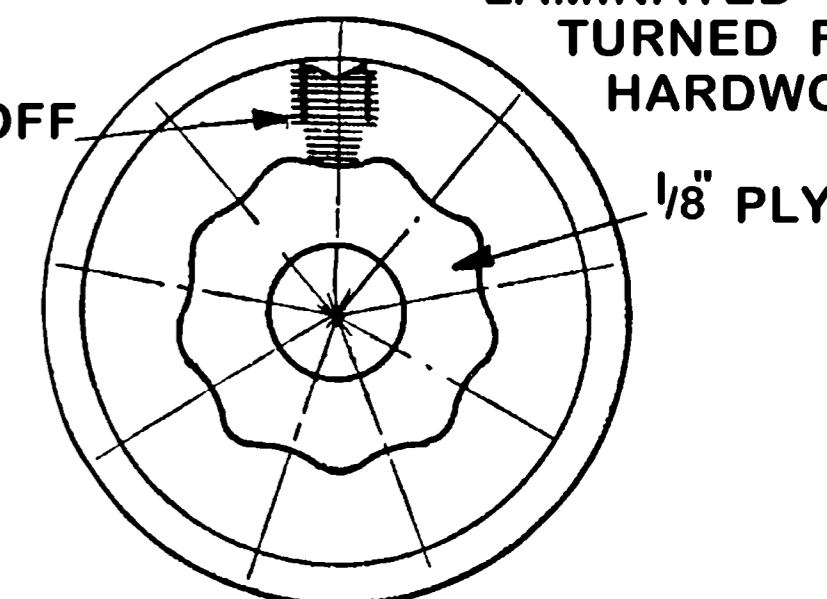
FORMERS B-J 3/32" SHT



TAIL PLANE 2 LAMINATIONS 3/32" SHT TAPE HINGES IN BETWEEN

COWL CAN BE LAMINATED OR TURNED FROM HARDWOOD

DUMMY CYLINDER 9 OFF



COWL HELD IN POSITION BY DUMMY ENGINE

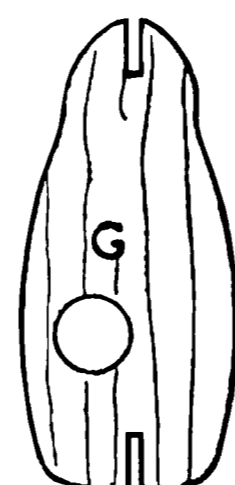
TANK POSITIONED HERE

U.C. 14 G. WIRE Balsa FAIRING BIND TO ENGINE BEARERS

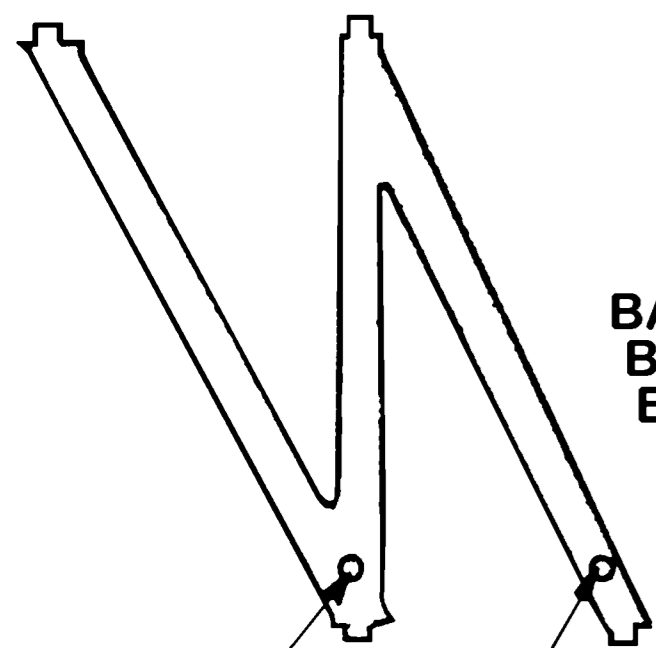
18G. WIRE Balsa FAIRING

ALL KEELS 1/16" SHT. FUSELAGE PLYNED WITH 1/4" x 1/16" Balsa

WHEELS 1 3/4" DIA.



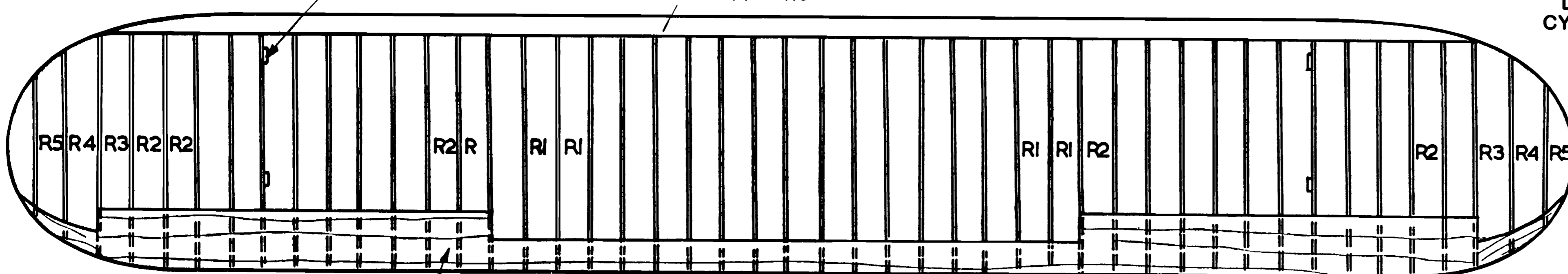
STRUTS FROM 1/8" PLY



HOLES FOR CONTROL WIRES PORT STRUT ONLY

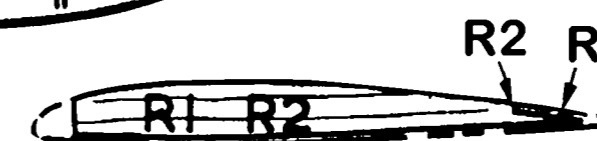
SLOTS FOR STRUTS

L.E. 1/4" x 3/16"



1/32" SHT.

LOWER SURFACE OF EACH WING CUT FROM 1/16" SHT. Balsa BUTT L.E. IN PLACE. ADD RIBS & T.E.



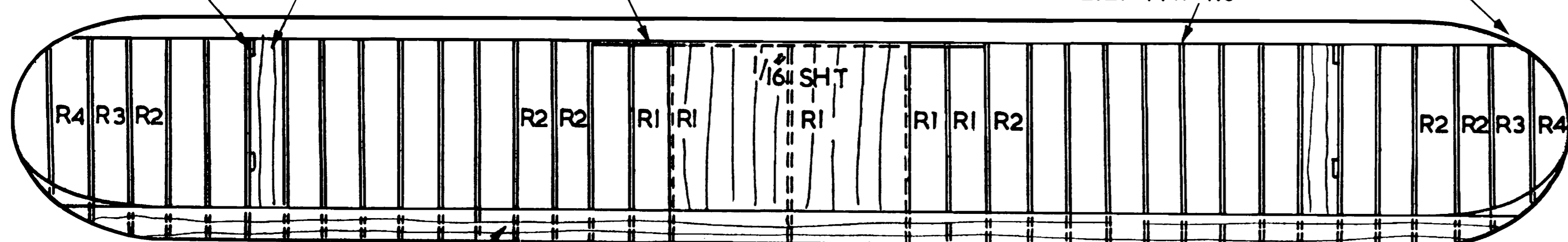
ALL RIBS 1/32" SHT.

THIS BAY COVERED WITH 1/16" TOP ONLY

SLOTS FOR STRUTS

DIHEDRAL BRACE 3/32" PLY

L.E. 1/4" x 3/16" 1/2" DIHEDRAL



1/32" SHT.

BOEING
 M A **290** **F4B-4** 3/6
 W.I. BARRETT
 SPAN 20" LENGTH 13"
 COPYRIGHT MODEL AIRCRAFT
 19-20 NOEL ST. LONDON WI