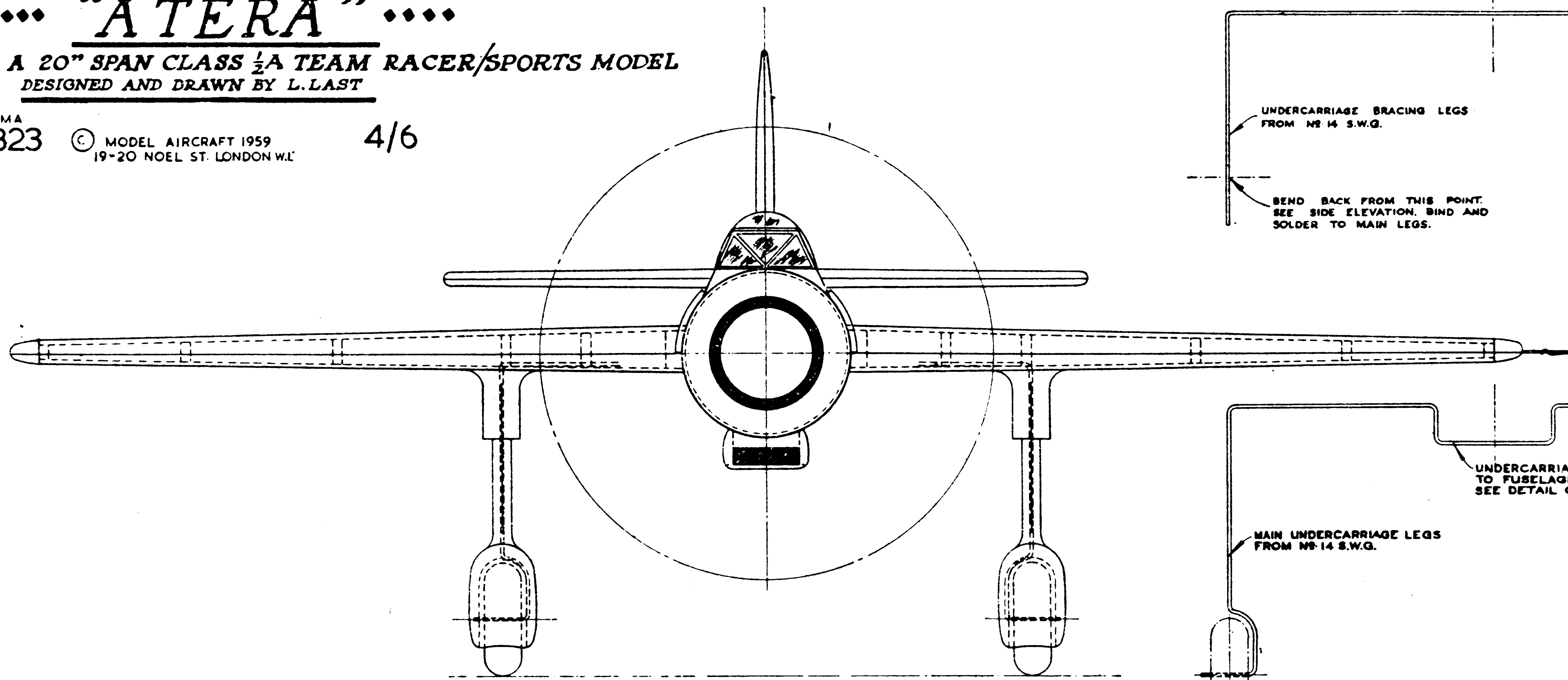


“ATERA”

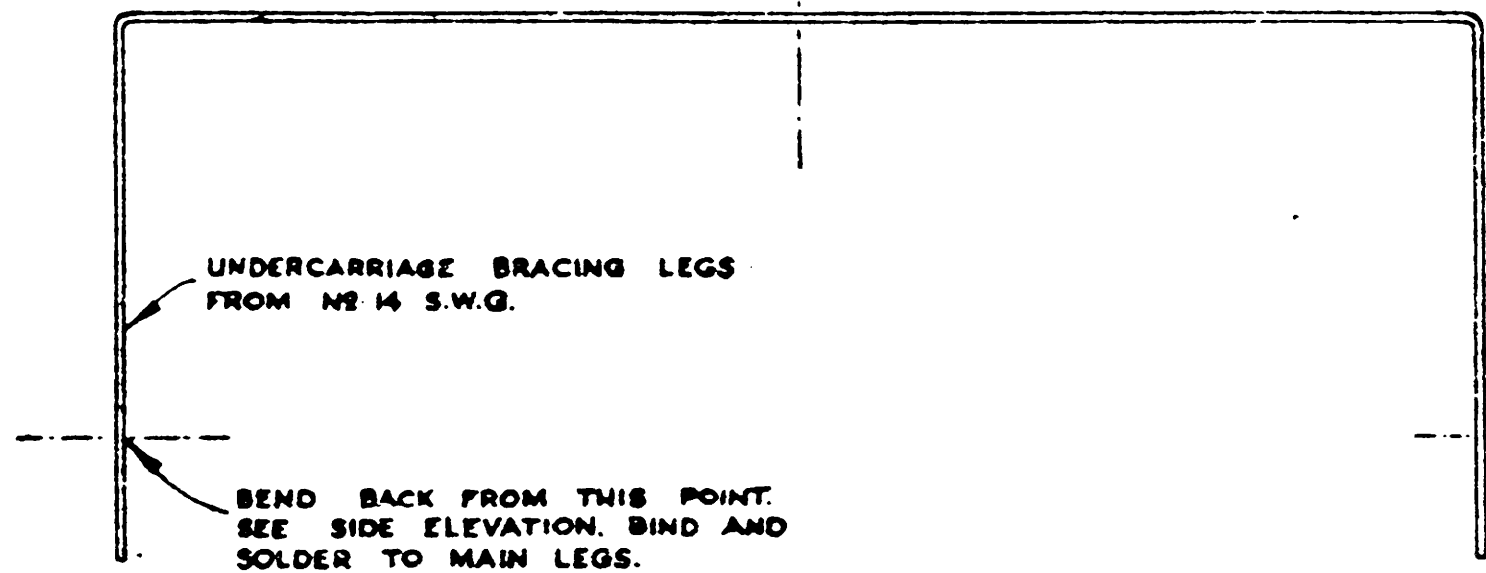
A 20" SPAN CLASS 1/4 TEAM RACER/SPORTS MODEL
DESIGNED AND DRAWN BY L.L.AST

MA 323 MODEL AIRCRAFT 1959
19-20 NOEL ST. LONDON W11

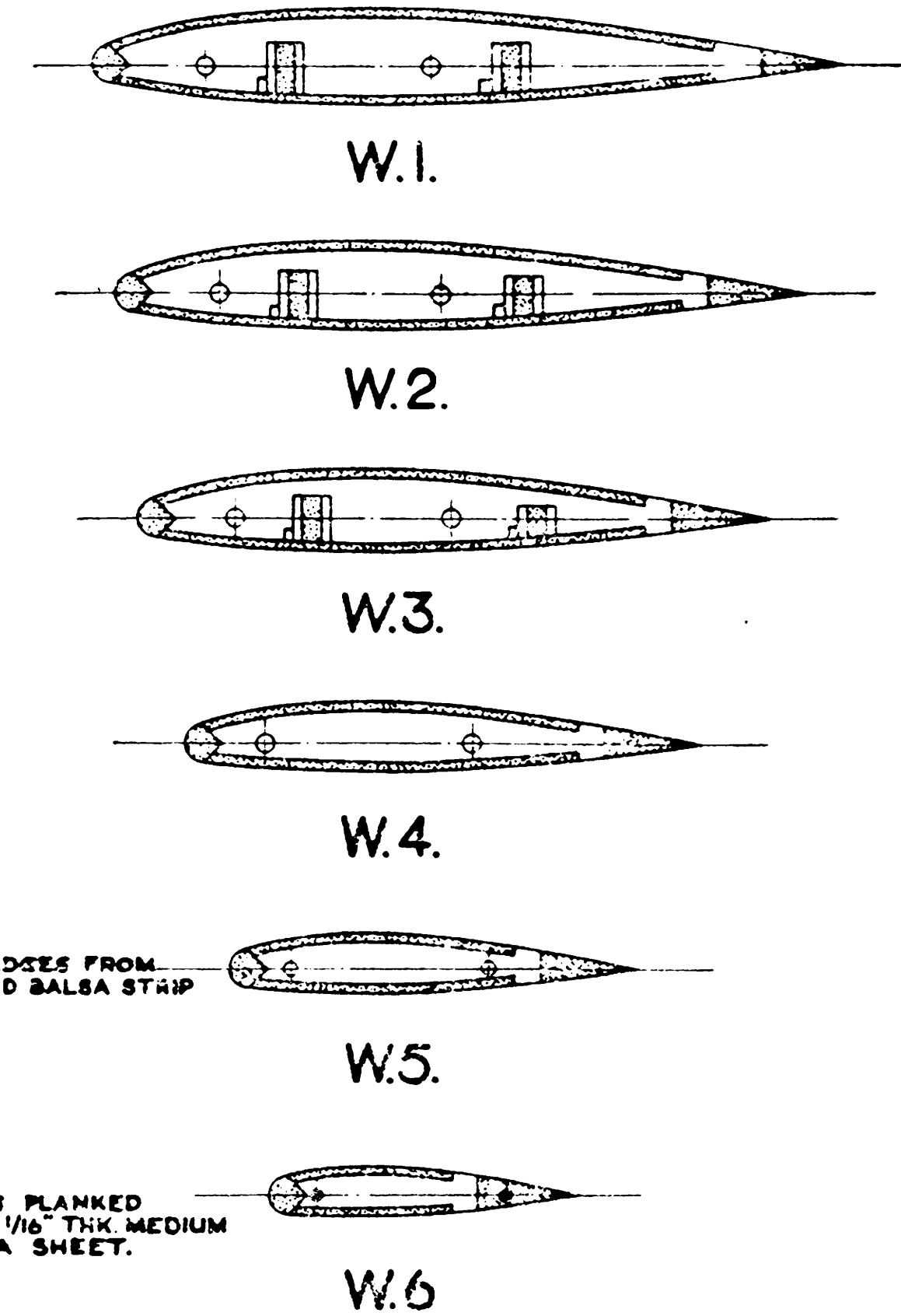
4/6



FRONT ELEVATION

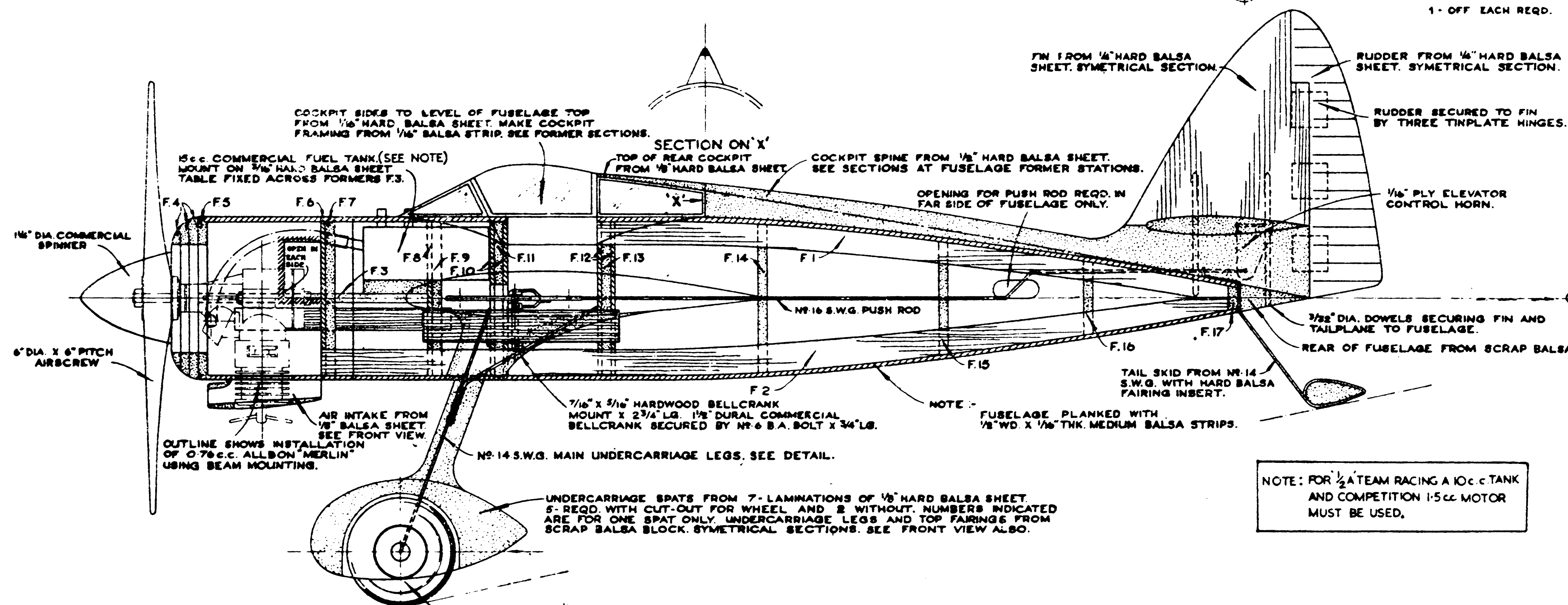


DETAIL OF MAIN 14G UNDERCARRIAGE LEGS
1" OFF EACH REQ.



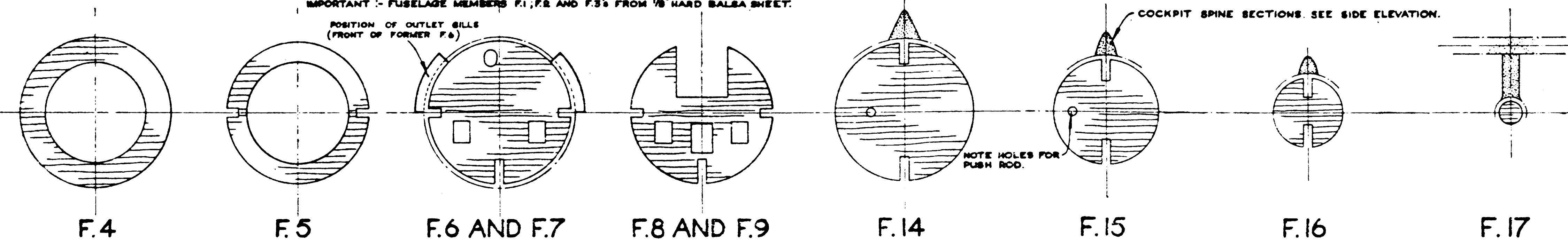
WING RIBS

RIBS W.1 - 2 OFF FROM 1/4" HARD Balsa SHEET
RIBS W.2 TO W.6 - 2 OFF EACH FROM 1/8" HARD
Balsa SHEET
NOTE: HOLES FOR LEAD-OUT WIRES PROVIDED
IN PORT WING RIBS ONLY. SEE PLAN.



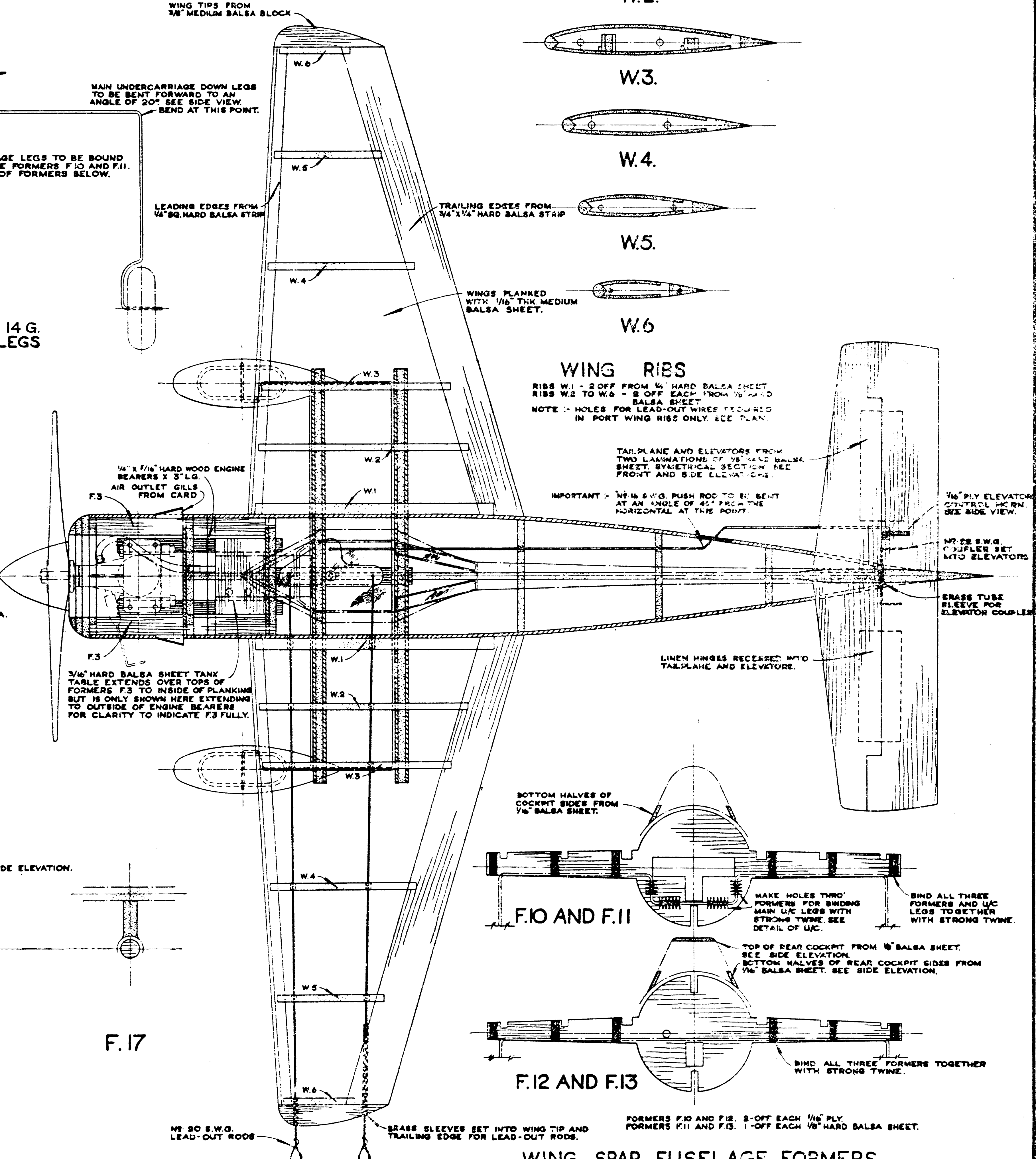
SIDE ELEVATION

IMPORTANT: FUSELAGE MEMBERS F.1, F.2 AND F.3 FROM 1/8" HARD Balsa SHEET.

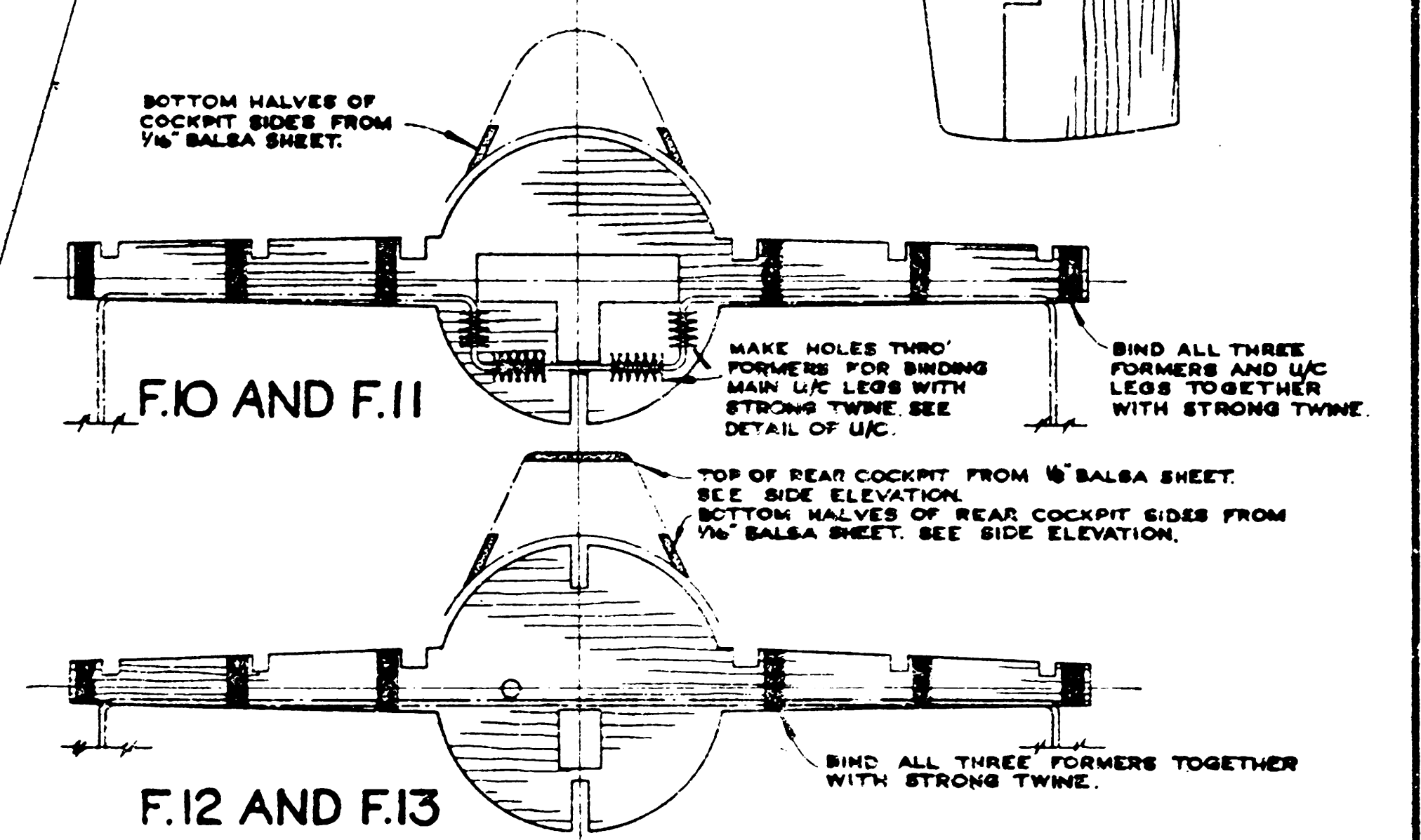


FUSELAGE FORMERS.

FORMERS F.4, 2-REQD. 1/8" HARD Balsa SHEET
FORMERS F.5, F.6, F.7, F.8, F.9, F.10, F.11, F.12, F.13, F.14, F.15, F.16, F.17, 1-OFF EACH 1/8" HARD Balsa SHEET.
FORMERS F.2 AND F.3, 1-OFF EACH 1/8" PLY.
SEE ALSO DETAILS OF WING SPAR FUSELAGE FORMERS F.10, F.11, F.12 AND 12 AT R.H. CORNER



PLAN



F.10 AND F.11

F.12 AND F.13

WING SPAR FUSELAGE FORMERS.

FORMERS F.10 AND F.11, 2-OFF EACH 1/8" PLY.
FORMERS F.12 AND F.13, 1-OFF EACH 1/8" HARD Balsa SHEET.