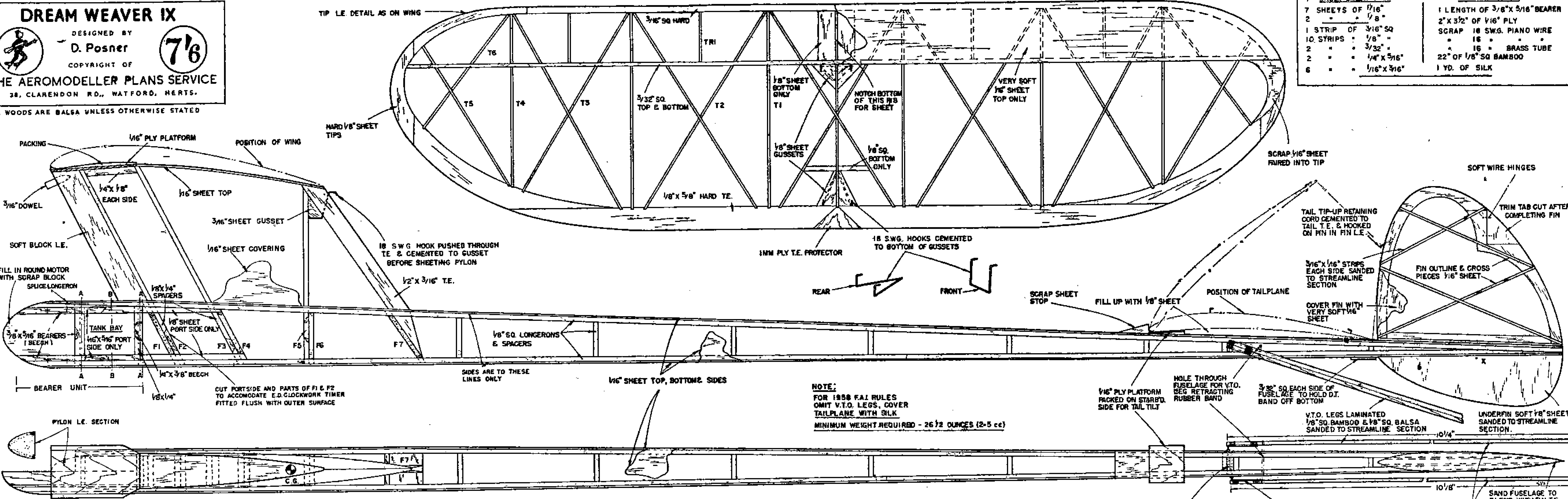


DREAM WEAVER IX
 DESIGNED BY
D. Posner
 COPYRIGHT OF
THE AEROMODELLER PLANS SERVICE
 38, CLARENDON RD., WATFORD, HERTS.

ALL WOODS ARE Balsa UNLESS OTHERWISE STATED

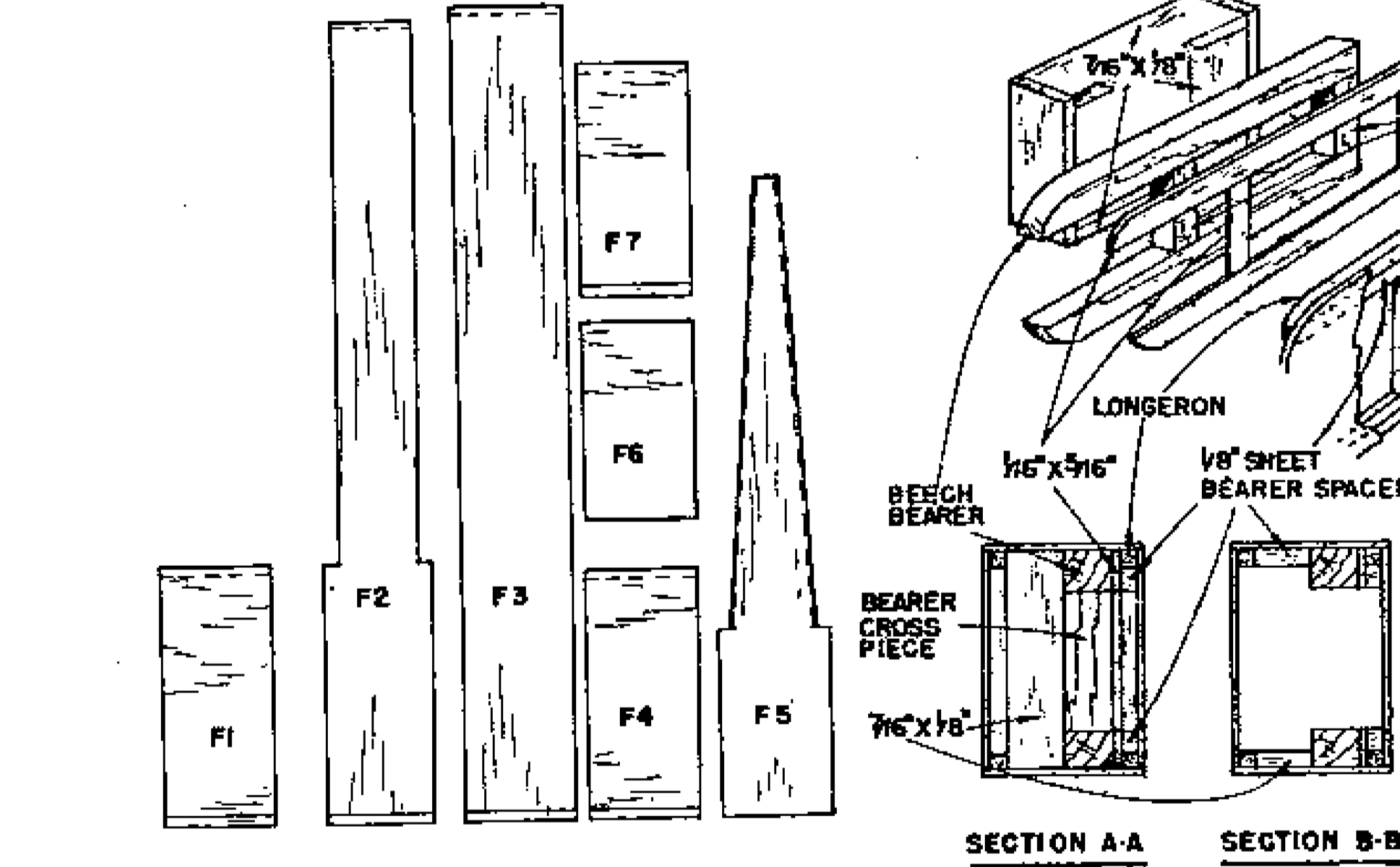
MATERIALS REQUIRED		MISCELLANEOUS	
7 SHEETS Balsa 3/16"		1 LENGTH OF 3/8" X 5/16" BEARER	
7 SHEETS OF 1/16"		2" X 3/2" OF 1/16" PLY	
1 STRIP OF 3/16" SQ		SCRAP 18 SWG. PIANO WIRE	
10 STRIPS 1/8"		18 "	
2 " 3/32"		16 "	
2 " 1/4" X 3/16"		22" OF 1/8" SQ BAMBOO	
6 " 1/16" X 3/16"		1 YD. OF SILK	



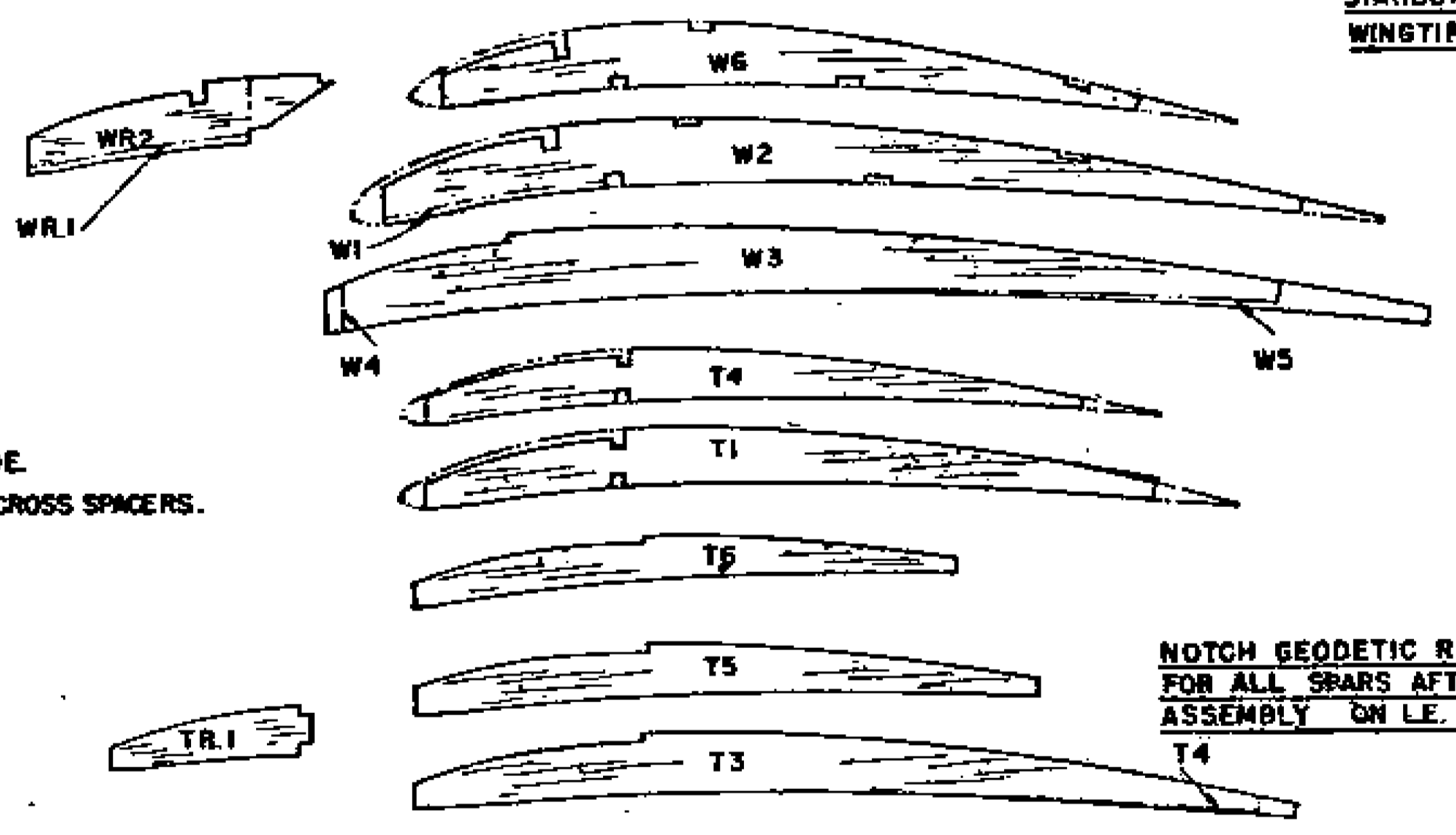
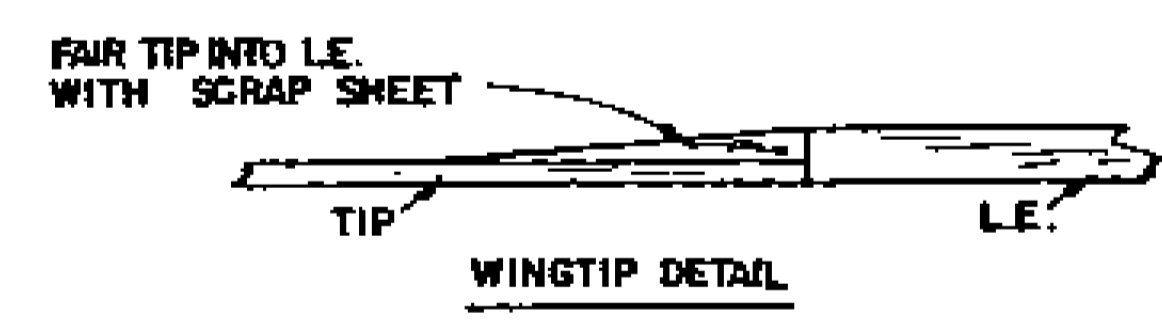
BEARER UNIT ASSEMBLY
 1. GLUE BEARERS TO CROSS PIECES
 2. FIT ENGINE BOLTS, SOLDER LOCKED
 3. ADD 1/8" X 3/16" FRAME
 4. ADD 1/16" X 1/8" SPACING BOX

POWER: OLIVER TIGER 2-43 cc
PROP: NYLON 8 1/2" X 4 1/2"
 (FROM 9" X 6" FROG PROP)
MIN. WEIGHT (E.A.): 17 1/2 OUNCES

COVER WINGS WITH SILK, FUSELAGE WITH HEAVY MODELSPAN AND TAIL WITH LIGHT MODELSPAN. GIVE FUSELAGE 2 COATS OF CLEAR DOPE. WING & TAIL 2 COATS FULL STRENGTH + 2 COATS EQUAL PARTS OF DOPE, THINNER & BANANA OIL.



FUSELAGE CONSTRUCTION
 1. CUT 1/16" SHEET SIDES, ADD 1/8" SQ LONGERONS & SPACERS.
 2. ADD EXTRA 1/8" SHEET BEARER SPACERS TO PORT SIDE.
 3. ASSEMBLE BEARER UNIT WITH MOTOR BOLTED IN & CEMENT TO PORT SIDE.
 4. ASSEMBLE SIDES ROUND FORMERS, CEMENT TAIL END TOGETHER, ADD CROSS SPACERS.
 5. ADD PYLON T.E., TANK & TIMER. SHEET TOP, BOTTOM & PYLON.



ALL FORMERS 1/16" SHEET

