

CHLOE

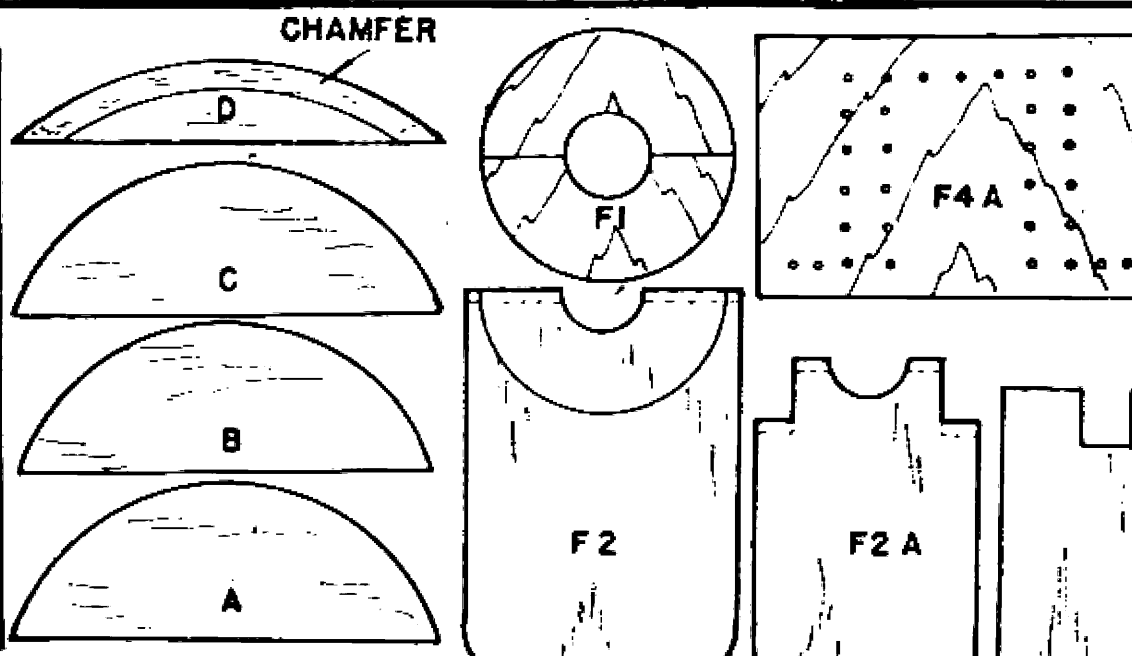
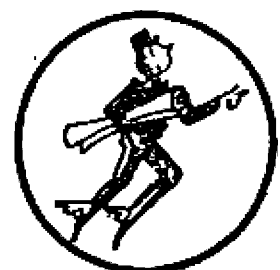
DESIGNED BY

R. Darr

COPYRIGHT OF

THE AEROMODELLER PLANS SERVICE

38, CLARENDON RD., WATFORD, HERTS.

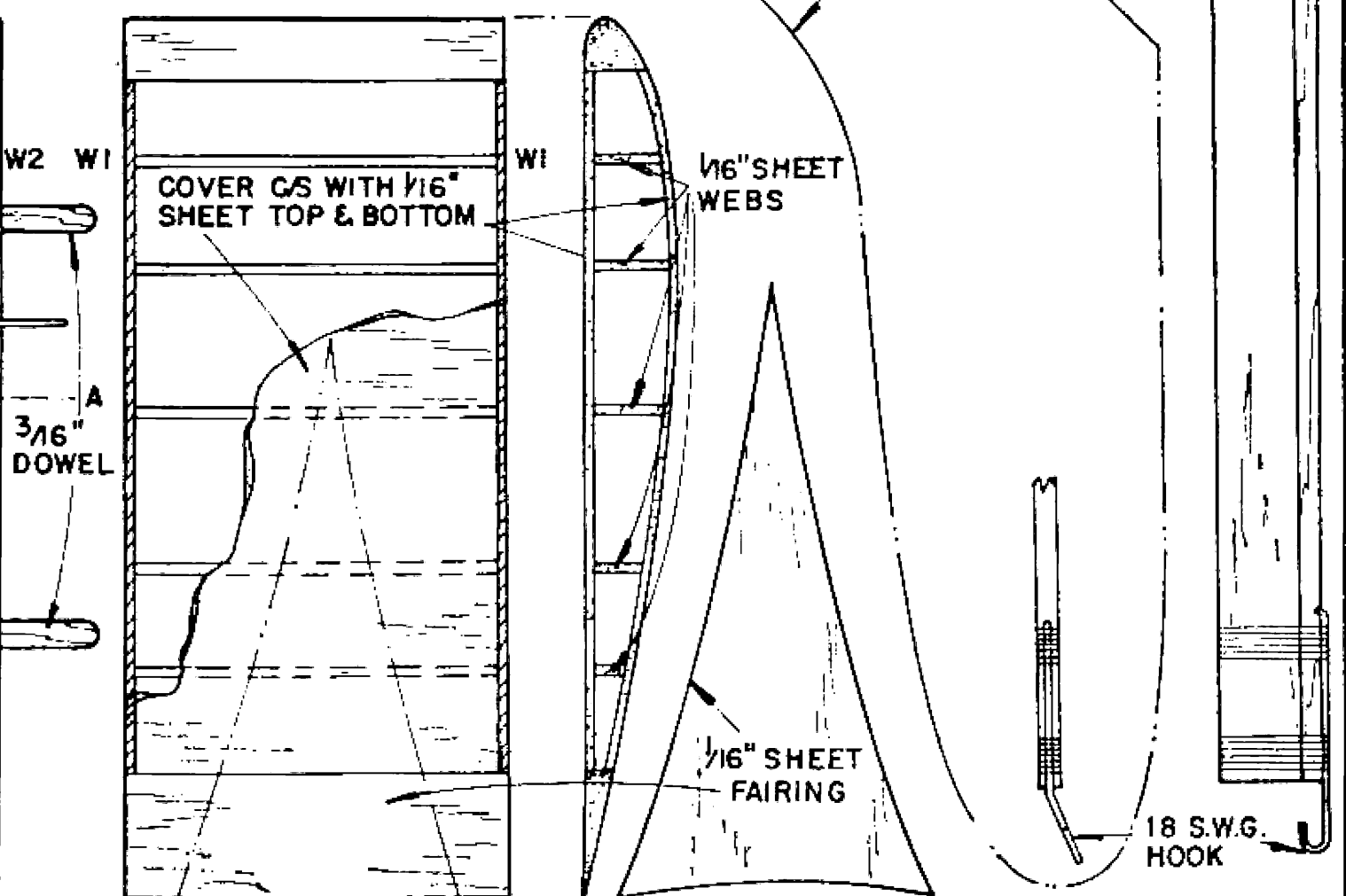
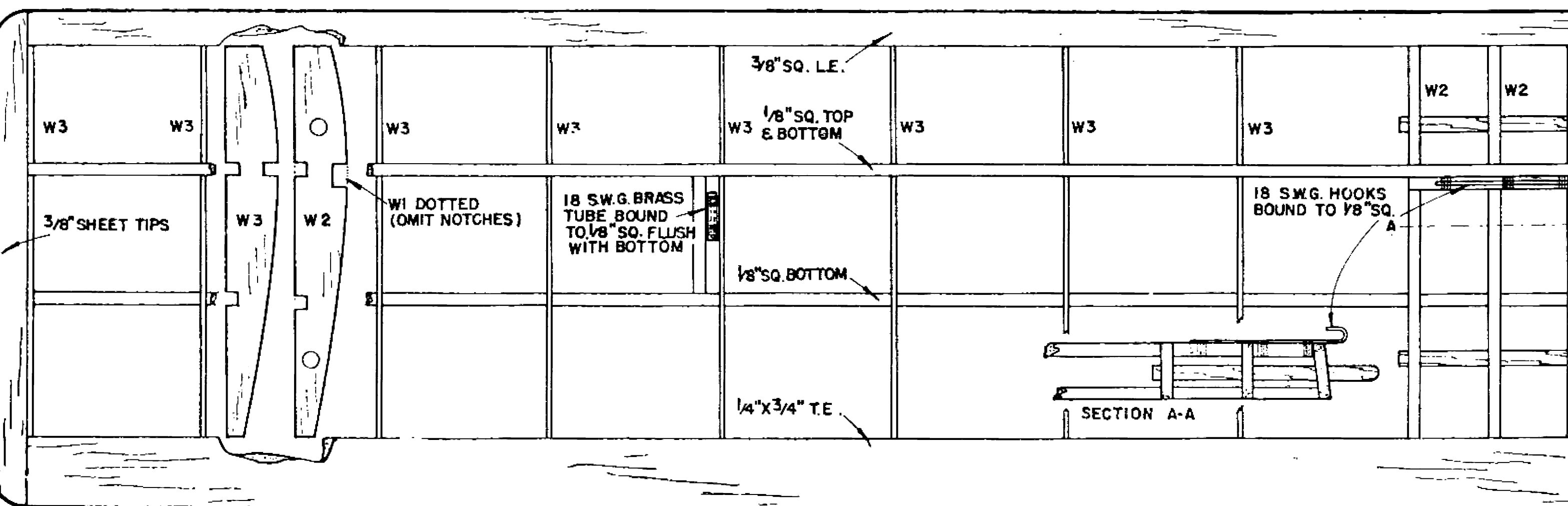
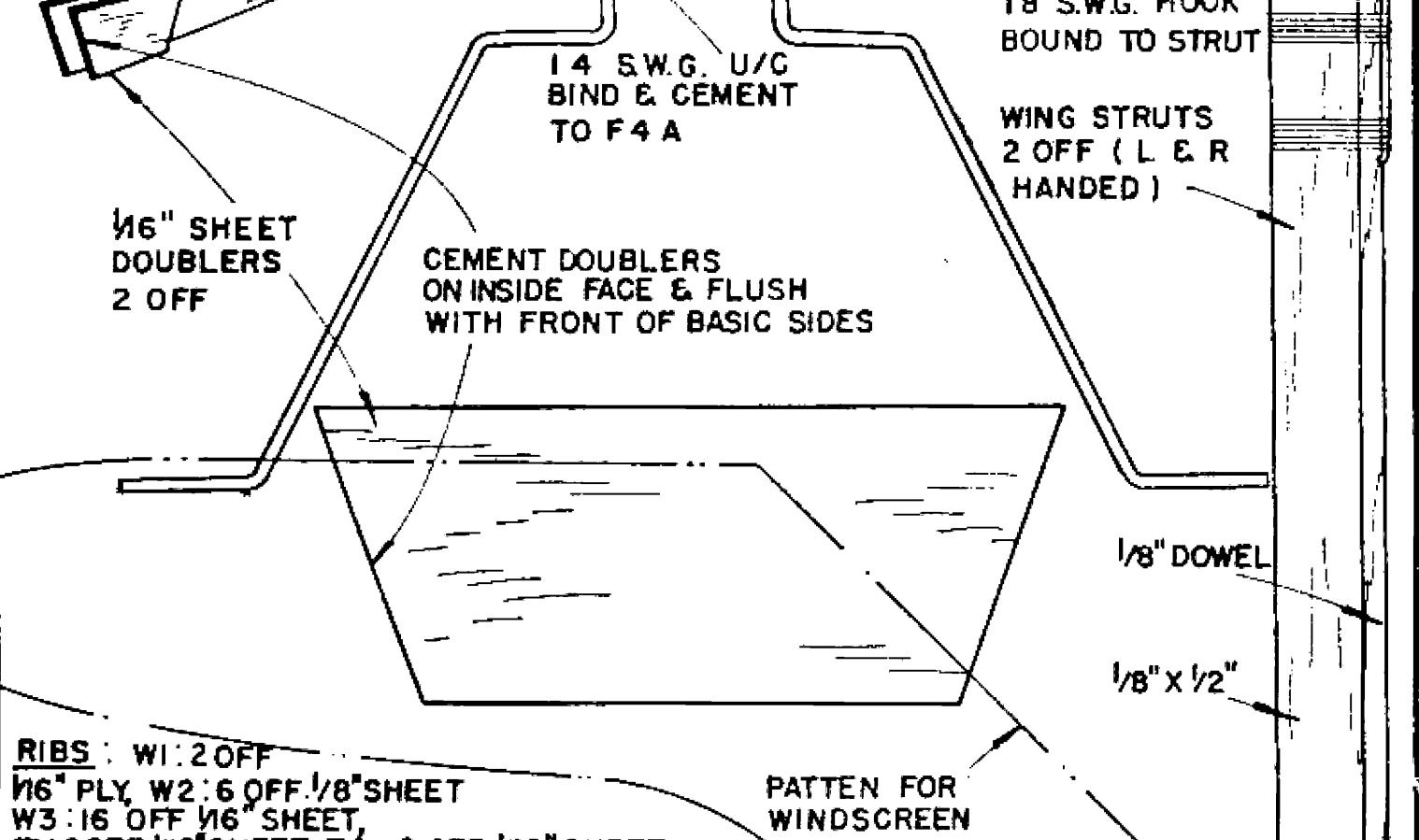
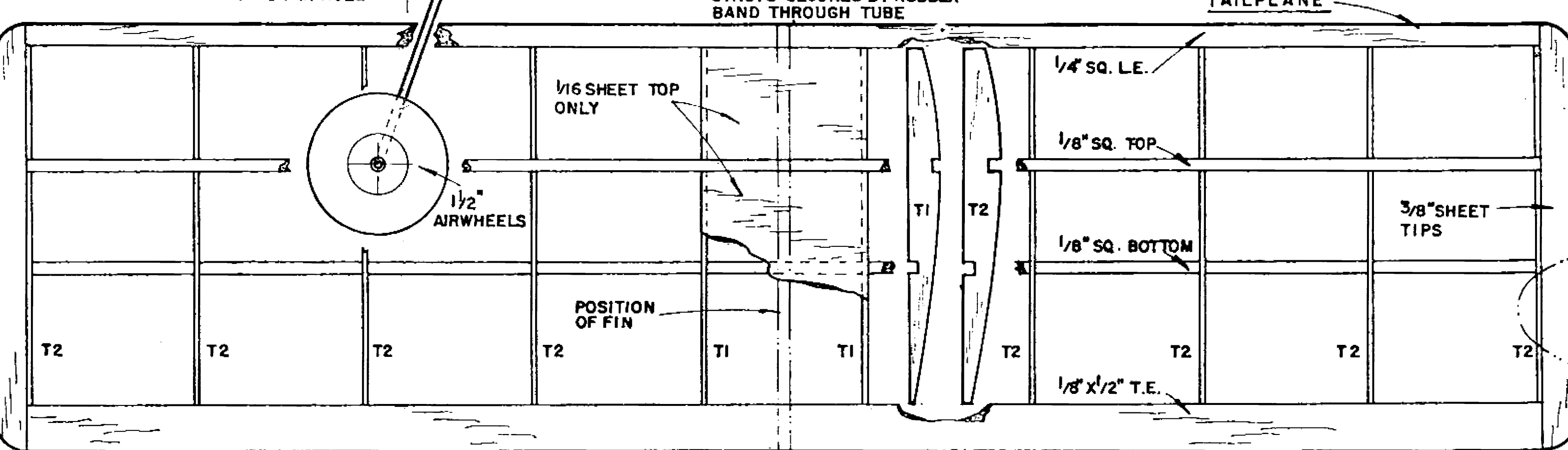
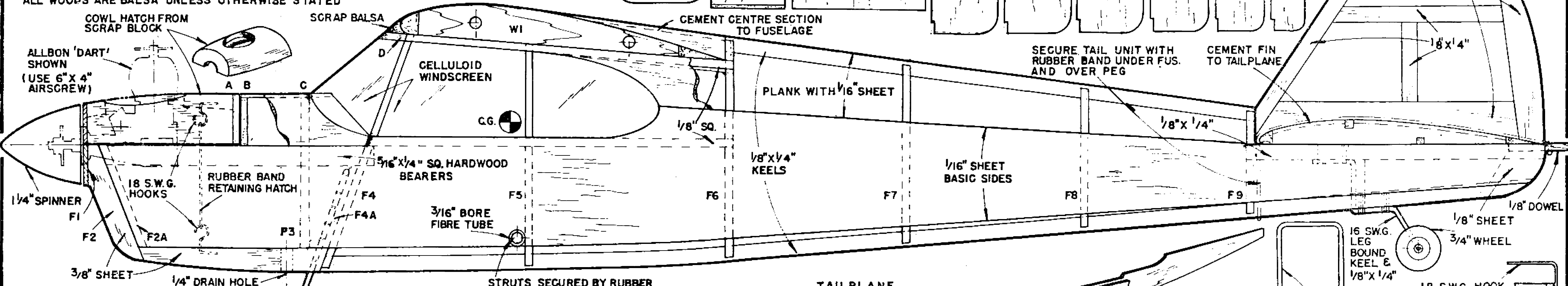


FORMERS
 A-D: 1 OFF
 1/8" SHEET
 F4-9: 2 OFF
 1/8" SHEET
 F1 & F4A: 10 OFF
 1/16" PLY

COVERING: WHOLE MODEL LIGHT
 MODELSPAN, GIVE 2 COATS CLEAR
 DOPE. FINISH FUSELAGE WITH
 COLOUR DOPE OR VALSPAR;
 VARNISH OR FUEL PROOF
 DOPED SURFACES.

MATERIALS REQUIRED	
3 SHEETS 1/16" X 3"	1 T.E. STRIP 1/8" X 1/2"
1 SHEET 1/8" X 3"	12" OF 5/16" X 1/4" BEECH
1 STRIP 3/8" SQ.	8" X 3" OF 1/8" PLY
1 " 1/4" SQ.	1 PIECE 14 SWG. WIRE
5 STRIPS 1/8" SQ.	1 " 16 " "
1 T.E. STRIP 3/16" X 3/4"	1 " 18 " "
CELLULOID, WHEELS, ETC.	

ALL WOODS ARE BALSA UNLESS OTHERWISE STATED



PORT WING (REVERSE PLAN FOR STARBOARD)

CENTRE SECTION

PUBLISHED AEROMODELLER,