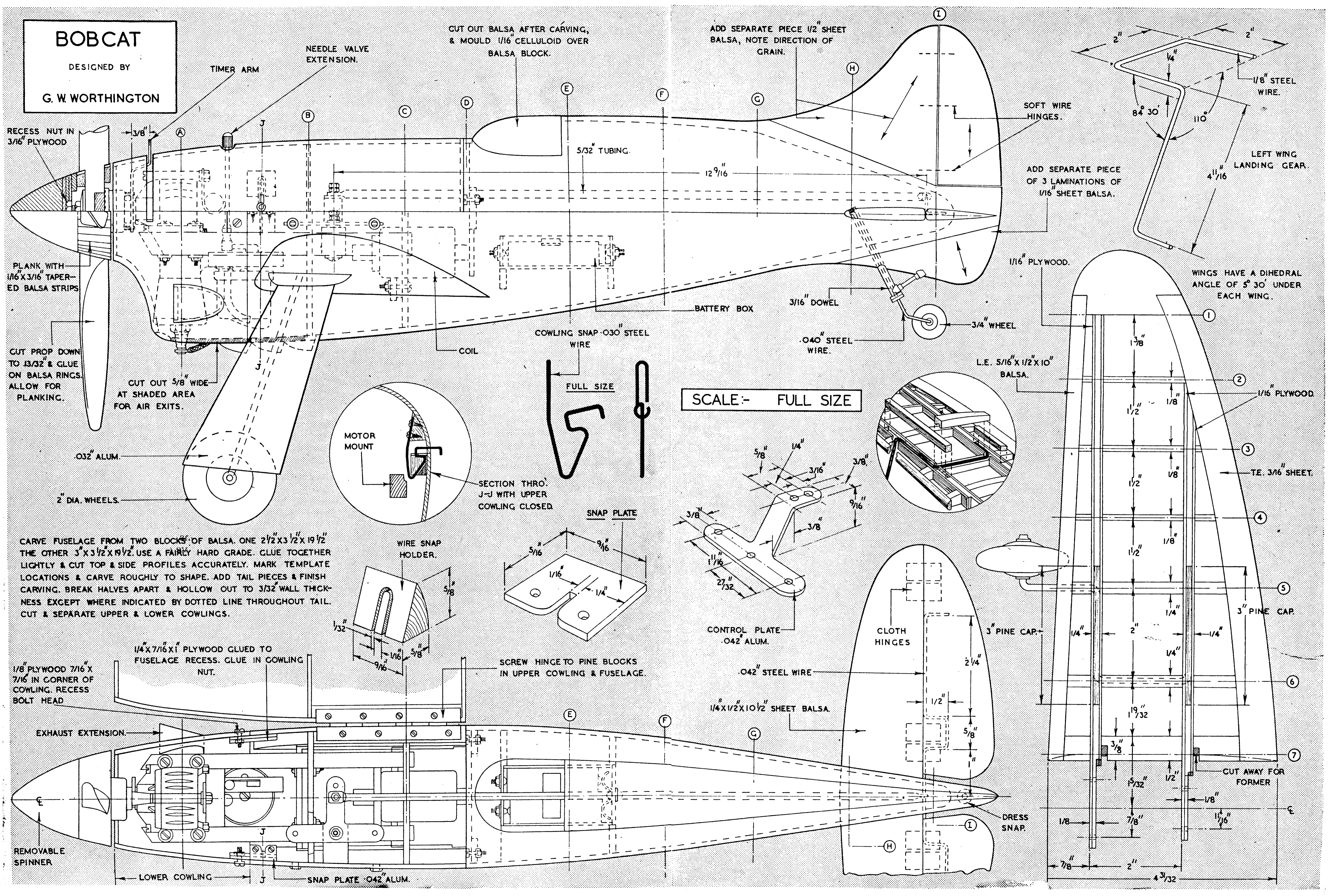


# BOBCAT

DESIGNED BY

G. W. WORTHINGTON



RECESS NUT IN 3/16" PLYWOOD

TIMER ARM

NEEDLE VALVE EXTENSION.

CUT OUT Balsa AFTER CARVING, & MOULD 1/16" CELLULOID OVER Balsa BLOCK.

ADD SEPARATE PIECE 1/2" SHEET Balsa, NOTE DIRECTION OF GRAIN.

SOFT WIRE HINGES.

ADD SEPARATE PIECE OF 3 LAMINATIONS OF 1/16" SHEET Balsa.

LEFT WING LANDING GEAR.

PLANK WITH 1/16" X 3/16" TAPERED Balsa STRIPS

CUT PROP DOWN TO 13/32" & GLUE ON Balsa RINGS. ALLOW FOR PLANKING.

CUT OUT 5/8" WIDE AT SHADED AREA FOR AIR EXITS.

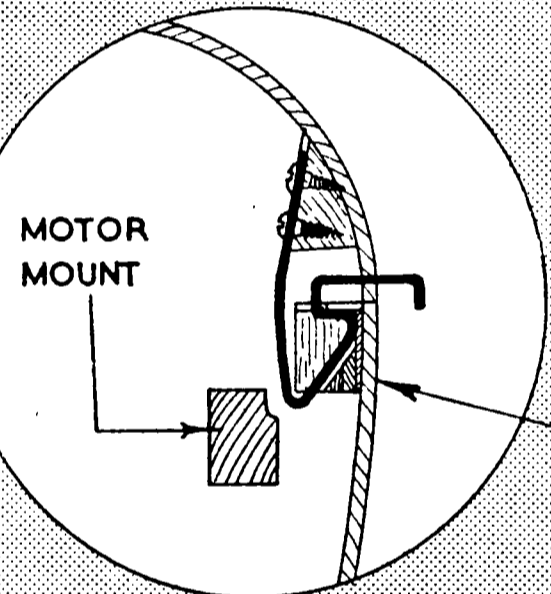
.032" ALUM.

2" DIA. WHEELS.

CARVE FUSELAGE FROM TWO BLOCKS OF Balsa. ONE 2 1/2" X 3 1/2" X 1 9/16" THE OTHER 3" X 3 1/2" X 1 9/16". USE A FAIRLY HARD GRADE. GLUE TOGETHER LIGHTLY & CUT TOP & SIDE PROFILES ACCURATELY. MARK TEMPLATE LOCATIONS & CARVE ROUGHLY TO SHAPE. ADD TAIL PIECES & FINISH CARVING. BREAK HALVES APART & HOLLOW OUT TO 3/32" WALL THICKNESS EXCEPT WHERE INDICATED BY DOTTED LINE THROUGHOUT TAIL. CUT & SEPARATE UPPER & LOWER COWLINGS.

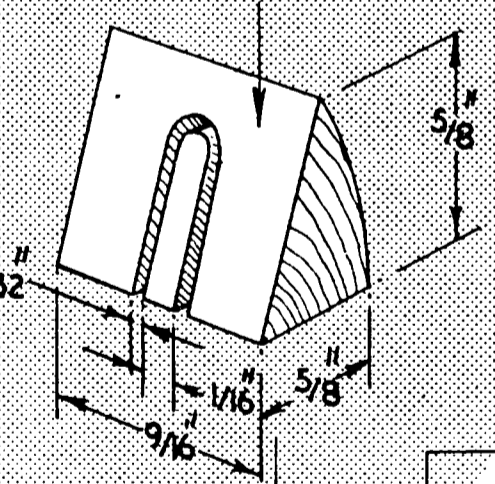
1/8" PLYWOOD 7/16" X 7/16" IN CORNER OF COWLING. RECESS BOLT HEAD

1/4" X 7/16" X 1" PLYWOOD GLUED TO FUSELAGE RECESS. GLUE IN COWLING NUT.

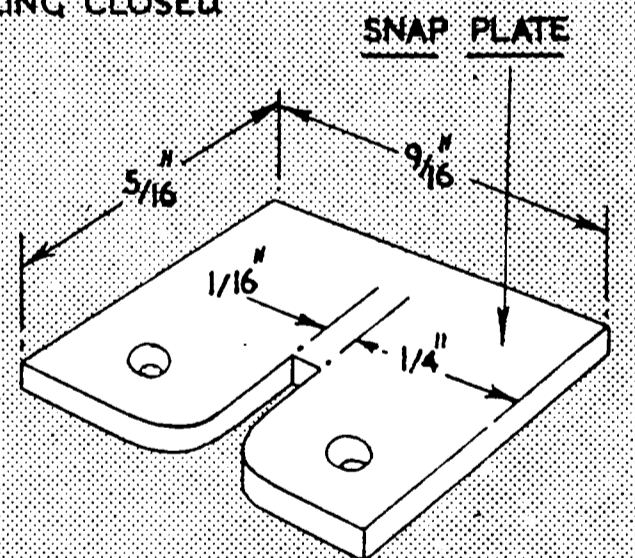


MOTOR MOUNT

SECTION THRO. J-J WITH UPPER COWLING CLOSED

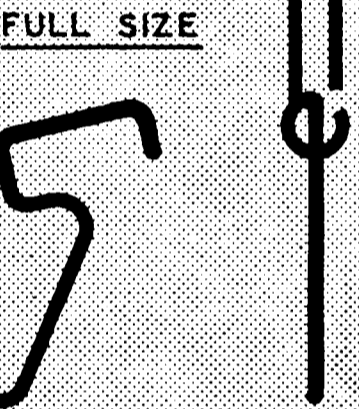


WIRE SNAP HOLDER.



SNAP PLATE

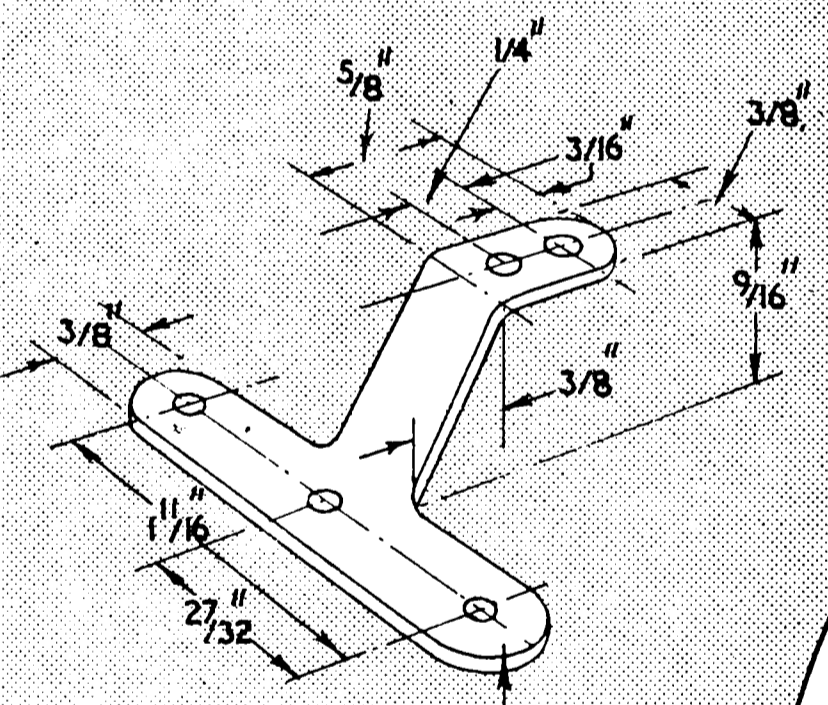
SCREW HINGE TO PINE BLOCKS IN UPPER COWLING & FUSELAGE.



FULL SIZE

COWLING SNAP - .030" STEEL WIRE

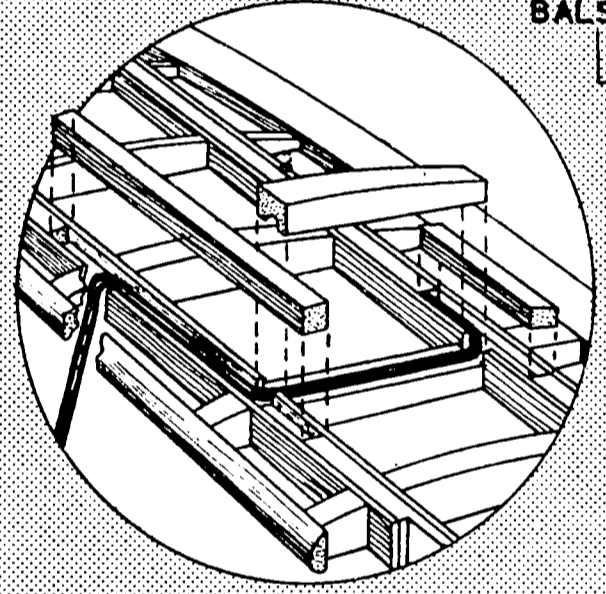
SCALE - FULL SIZE



CONTROL PLATE .042" ALUM.

.042" STEEL WIRE

1/4" X 1 1/2" X 10 1/2" SHEET Balsa.

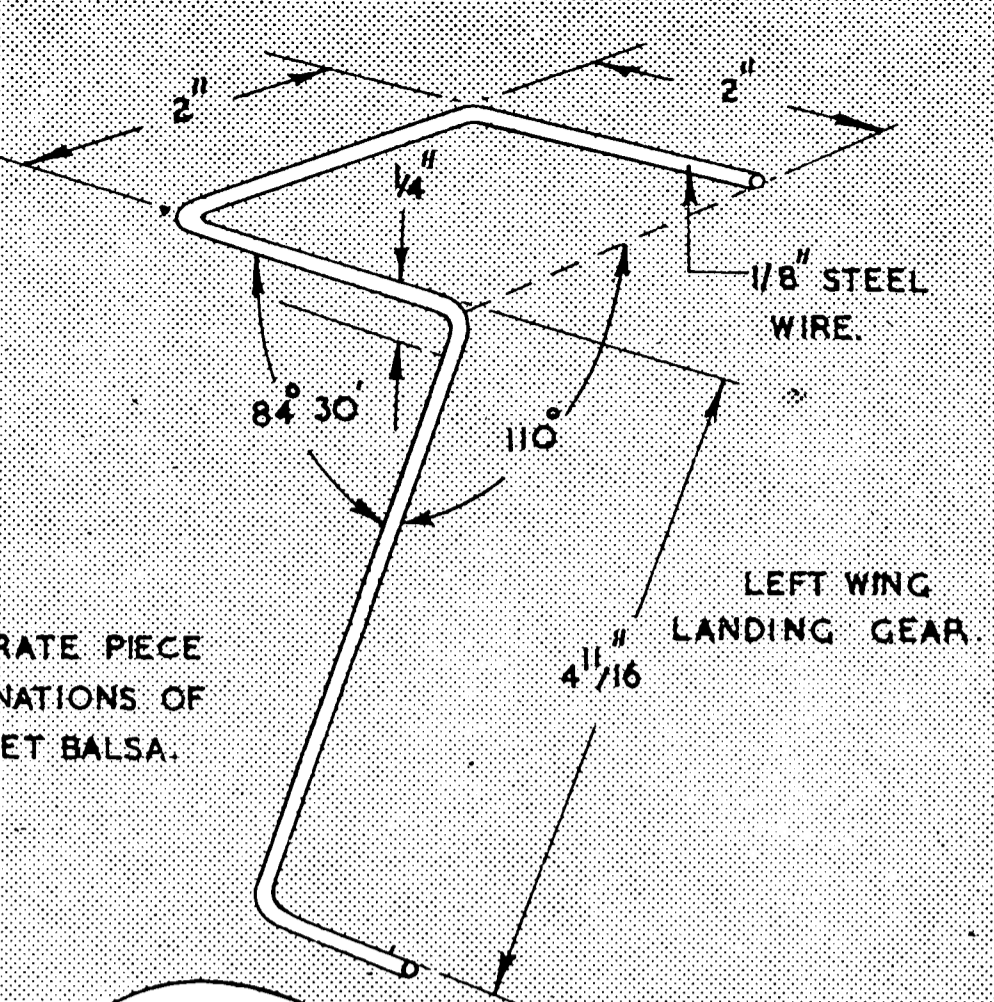


L.E. 5/16" X 1/2" X 10" Balsa.

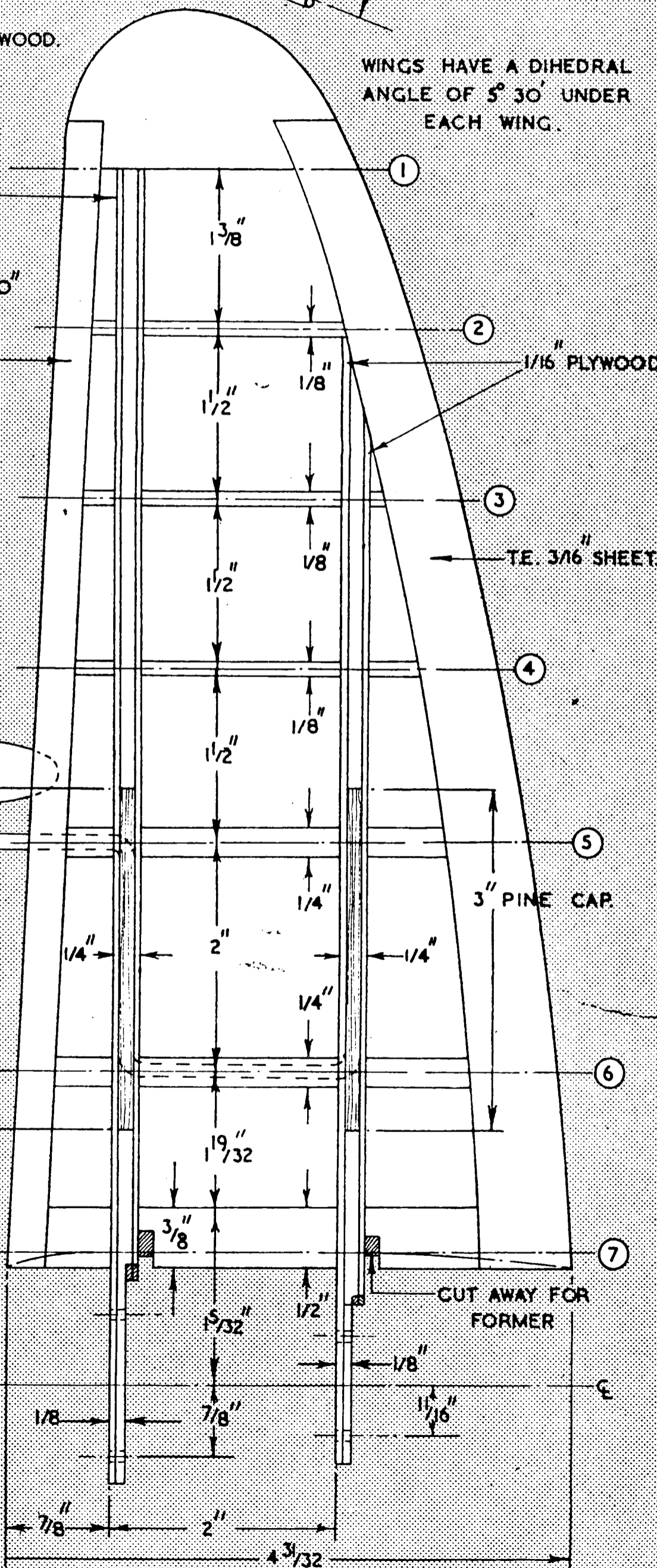
CLOTH HINGES

3" PINE CAP.

DRESS SNAP.



WINGS HAVE A DIHEDRAL ANGLE OF 5° 30' UNDER EACH WING.



1/16" PLYWOOD

TE. 3/16" SHEET

3" PINE CAP.

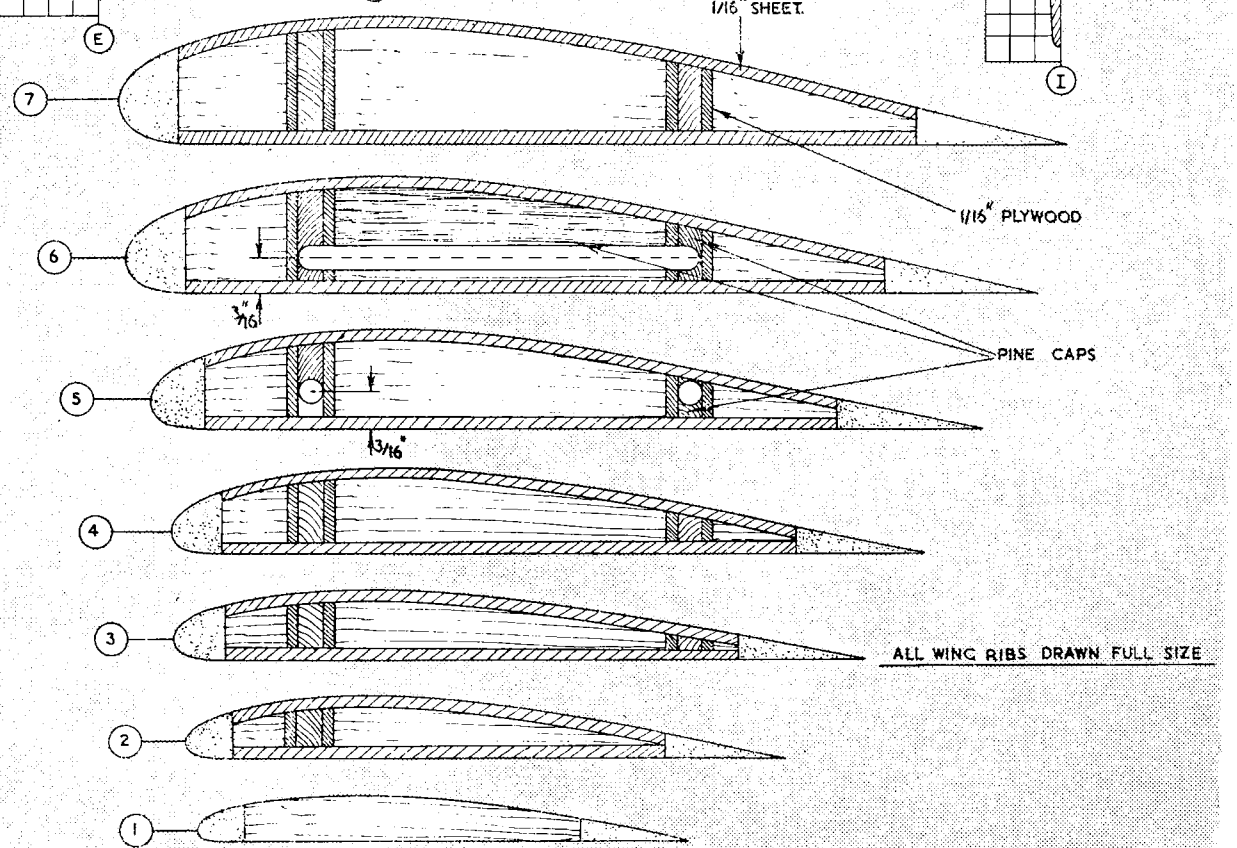
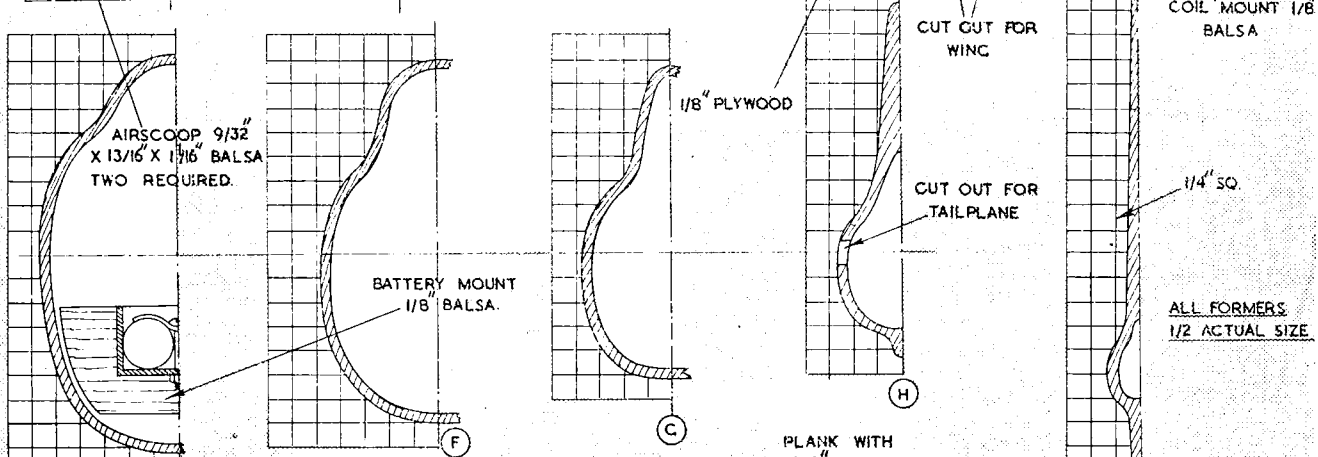
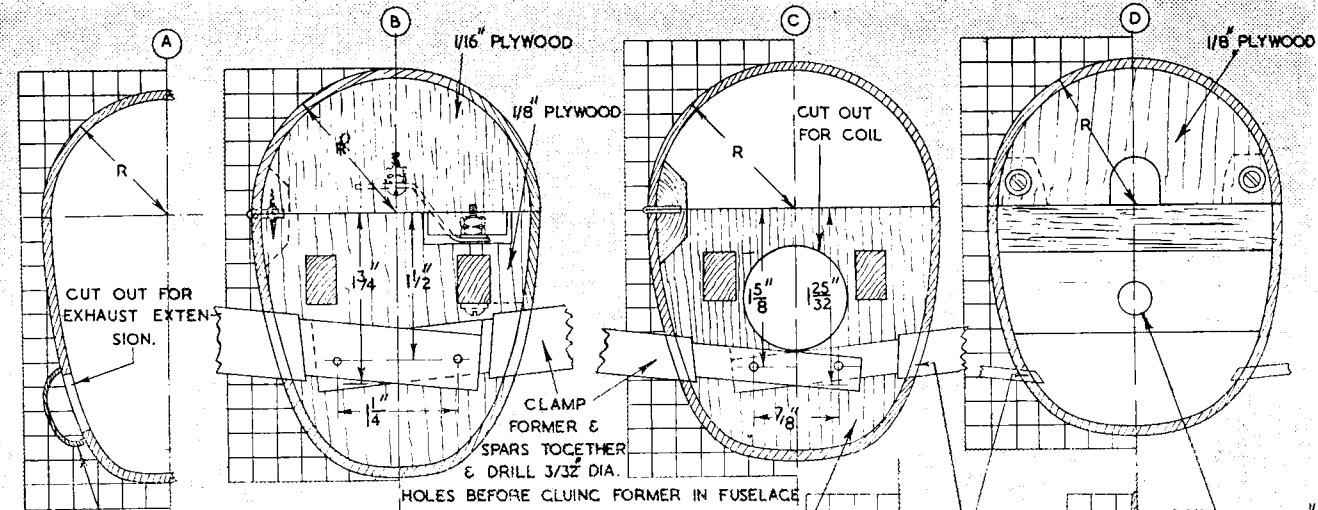
CUT AWAY FOR FORMER

LOWER COWLING

SNAP PLATE .042" ALUM.

REMOVABLE SPINNER

EXHAUST EXTENSION.



ALL WING RIBS DRAWN FULL SIZE