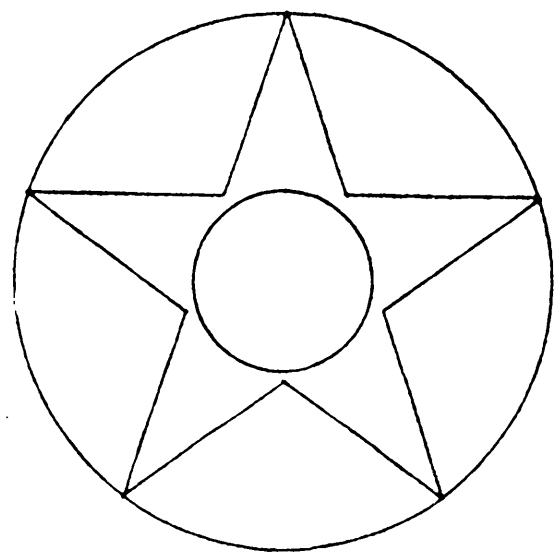
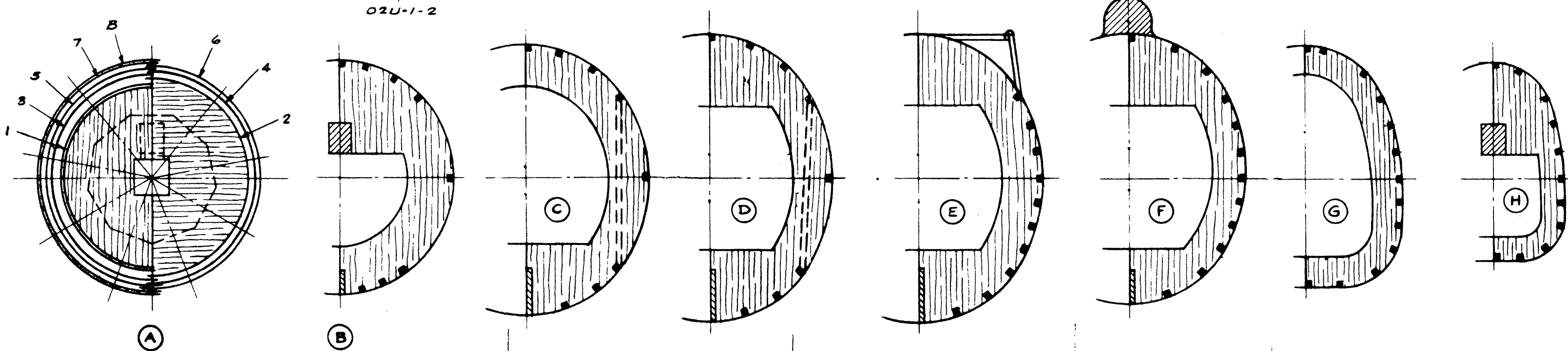
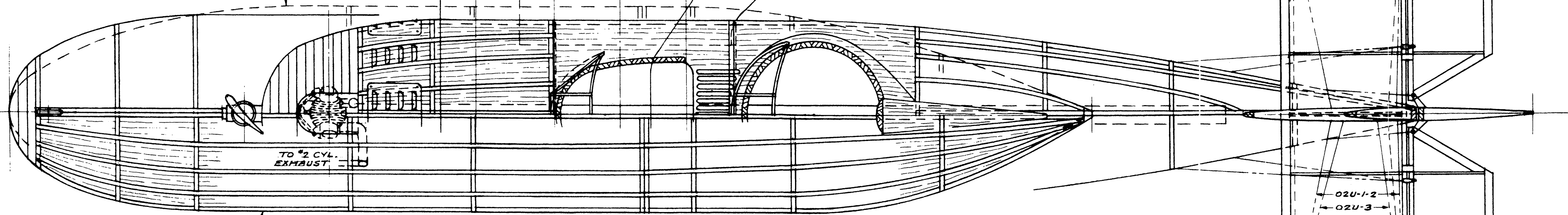


U.S. NAVY

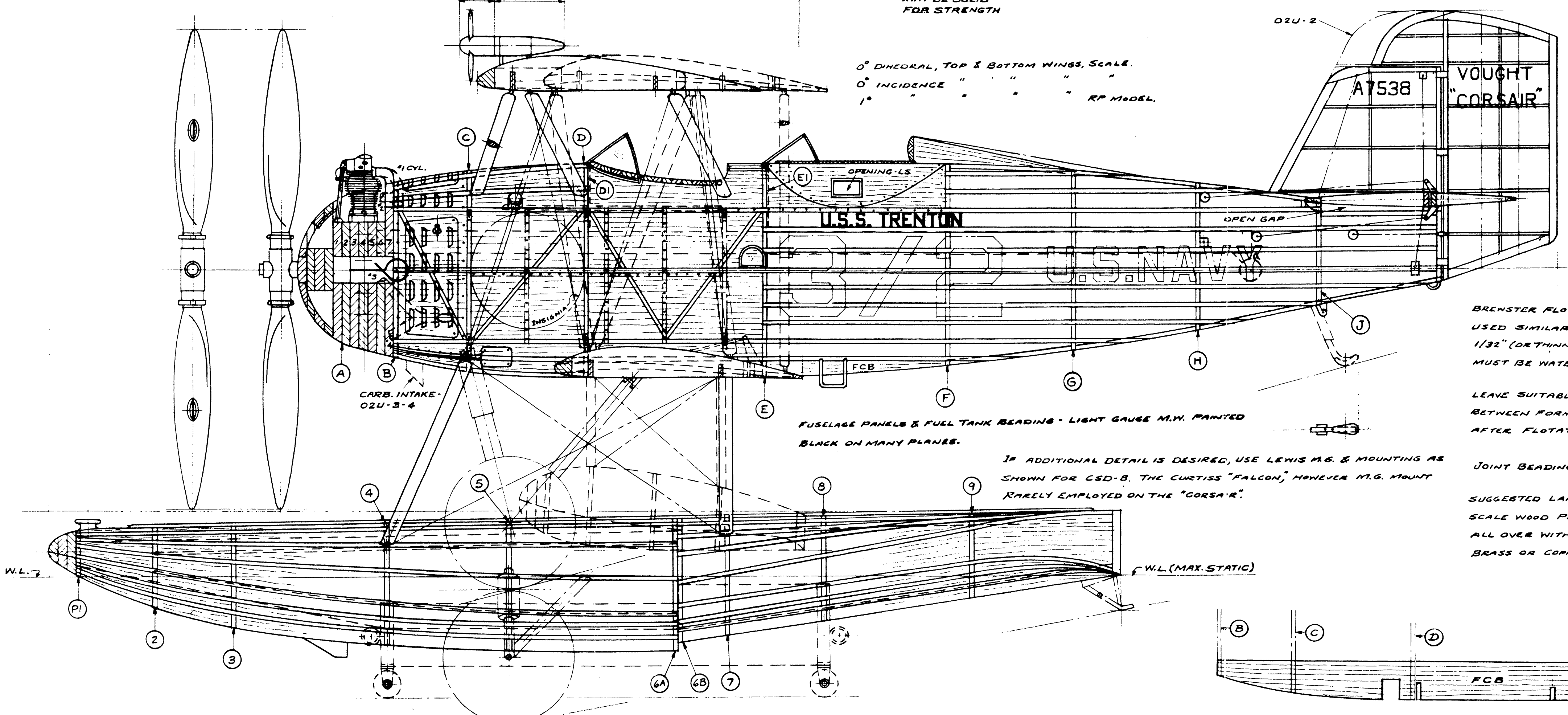


U.S. INSIGNS & "U.S. NAVY" LETTERING ON LOWER WING - LATE OZU-3-4 MODELS ONLY
OZU-3-4 - AMPHS.



BUILD UP NOSE COYL & ENGINE BLOCK FROM 1/8" THICK Balsa & SAND TO SHAPE. DRILL OR ROUT HOLES, ADD ENGINE CYL. & DETAILS.
MOVABLE SHUTTERS IN NOSE COYL MAY BE MADE FROM THIN ALUMINUM STRIP SLIDING ON M.W. RAILS.
HOLLOW OUT NOSE COYL 1/16" THICK ON ERHIB, 3/32" THICK ON RP MODELS & GLUE IN HARDWOOD BEARING BLOCK. NOSE COYL MAY ALSO BE MADE FROM THIN PRESSED ALUMINUM SHEET IF DESIRED.

"HALF SHELL" FUSELAGE CONSTRUCTION EMPLOYED WITH 1/16" FORMERS, CENTER BEAMS & 1/16" SQ. STRINGERS. "FILL-IN" AREAS SHOWN TO SIMULATE METAL COWLINGS OF ORIGINAL.
"FILL-IN" FUSELAGE BOTTOM FROM "B" TO "E".
NOTE REAR COC-PILOT CONSOLE BETWEEN FORMERS "E" & "F" IS BUILT UP WITH 1/16" SHEET Balsa & SANDED TO FORM A FLAT TOP SURFACE FOR MOUNTING M.G. RING. MAKE WINDSHIELD & HEADREST REMOVABLE.



0° DHEDRAL, TOP & BOTTOM WINGS, SCALE.
0° INCIDENCE " " " " " " RP MODEL.

BREXTER FLOTATION GEAR ON ORIGINAL. HALF-SHELL TYPE CONSTR. USED SIMILAR TO FUSELAGE. COVER OR FILL-IN ENTIRELY WITH 1/32" (OR THINNER) Balsa SHEET. ALL FLOATS FOR WORKING MODEL MUST BE WATER-TIGHT, TEST BY IMMERSION.
LEAVE SUITABLE UPPER CENTER PORTION OF MAIN PONTON OPEN BETWEEN FORMERS "PA" & "PB" FOR BALLAST ADJUSTMENT. AFTER FLOTATION BALANCE, FILL-IN & SEAL AREAS.
JOINT BEADING ON FLOATS & PONTON - USE LIGHT M.W.
SUGGESTED LAND HANDLING DOLLY & DISPLAY STAND FOR SEAPLANE. SCALE WOOD PLANK CONSTR. SHOWN - PAINTED DARK NAVY GRAY ALL OVER WITH BLACK G.I. GUNNEL CASTERS. ENGRAVE: NAMEPLATE, BRASS OR COPPER, BOTH SIDES.

V0-3 INSIGNS - BS. FUSE. FRONT. BAT SILHOUETTE, BLACK ON WHITE. CIRCLE EDGED (1/32") IN BLACK.

SINGLE STRAND LANDING WIRES, DOUBLE STRAND FLYING WIRES SPACED 1/16" APART - ON SOME MODELS 3/32" APART OR 3/16" APART AT BAY STRUTS TAPERING TO 1/16" APART AT FUSELAGE. USE HEAVY SILK OR NYLON THREAD FOR RP MODEL, LIGHT GAUGE M.W. FOR ERHIB. TYPE MODEL.
CONNECTION ACCESS PLATES AT ALL RISING JUNCTION POINTS ON WING SURFACES. 3/16" x 1/8" AT DOUBLE LEAD-IN, 3/16" x 5/16" AT SINGLE LEAD-IN. MAKE FROM HEAVY BOND PAPER.

A LIGHTWEIGHT, HIGH PERFORMANCE RP MODEL MAY BE CONSTRUCTED FROM THIS PLAN BY REDUCING RIBS, FORMERS, STRINGERS, SPAR SIZES & "FILL-IN" AREAS. WHERE POSSIBLE, SOLID PARTS MAY BE HOLLOWED OUT & A RP TUBE BE EMPLOYED INSTEAD MOTIVE SPAR SHOWN.

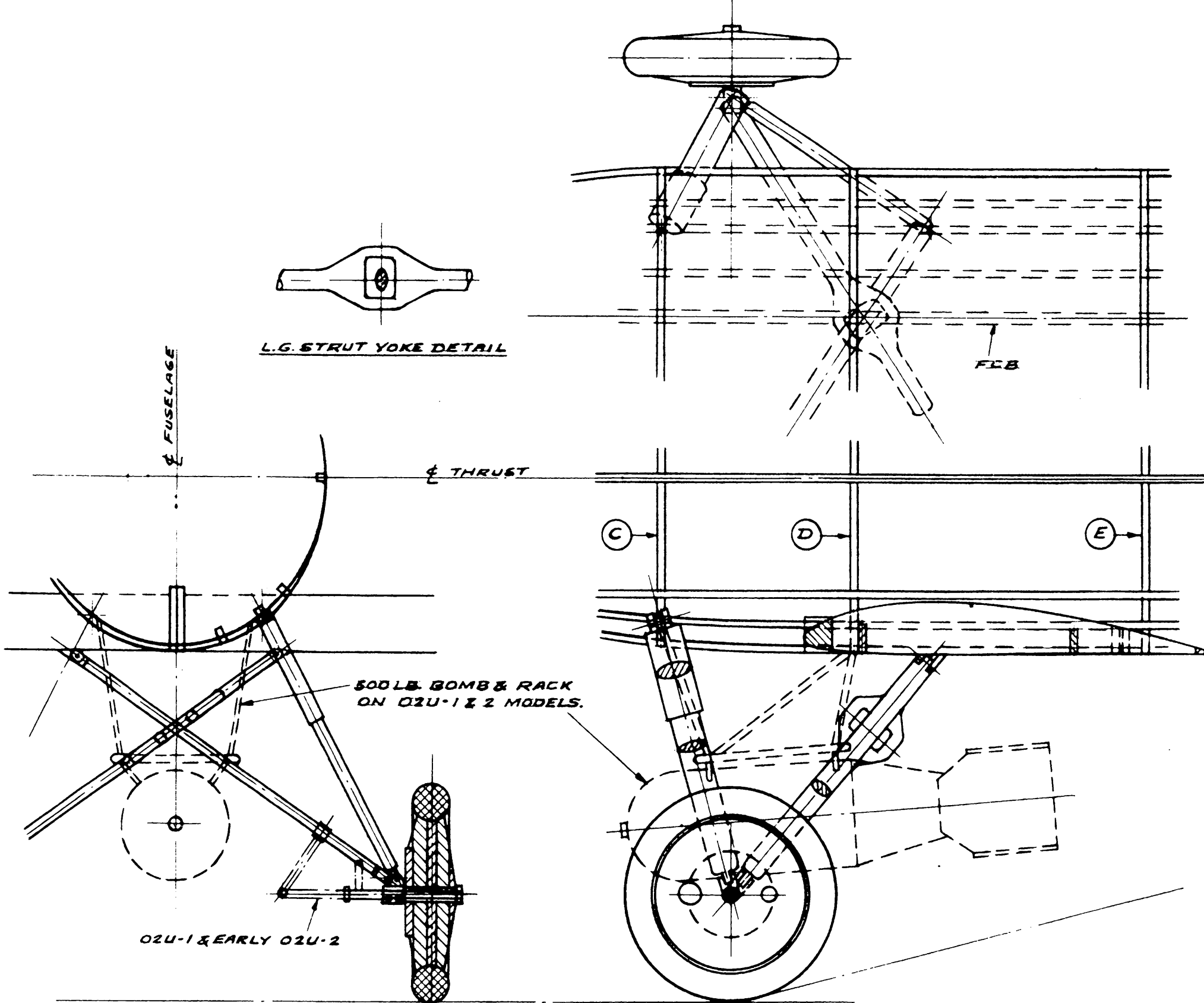
"KEEPING UP" STRUCTURE, MODEL IS READILY ADAPTABLE FOR THE SMALLER BORE GAS ENGINES, AN EXCELLENT FREE FLIGHT OR R.C. PROJECT.

WATER SURFACE ADHESION ON THE MAIN PONTON IS AN INHERENT PROBLEM IN ROY FLIGHTS WITH THE "CORSAIR" MODEL. IT IS RECOMMENDED THAT PONTON UNDERSURFACE BE HIGHLY POLISHED WITH A LIGHT FILM OF H₂O IMPERVIOUS WAX OR CLEAR (WHITE) VASELINE TO MINIMIZE SUCTION EFFECT.

CUSTOM SCALE DESIGN PLAN CSD-10	
1927-30 VOUGHT "CORSAIR" MODELS OZU-2-3-4	
PRATT & WHITNEY "WASP" SERIES B-425/450 HP	
DESIGN BY: C.E. STEINCHAK	SCALE 3/4" = 1'-0"
DATE: FEB. 23, 1912	1/16" FULL SIZE
CSD-10	
SHEET 1 OF 2	

FOR EXHIB. TYPE MODEL MAKE L.S. STRUTS PIN CONNECTED & REMOVABLE TAIL SKID SO THAT EITHER LANDPLANE, SEAPLANE OR AMPHIBIAN VERSIONS MAY BE DISPLAYED.

MAKE ALL STRUTS FROM HARD GRAINED BALEA OR W.P.

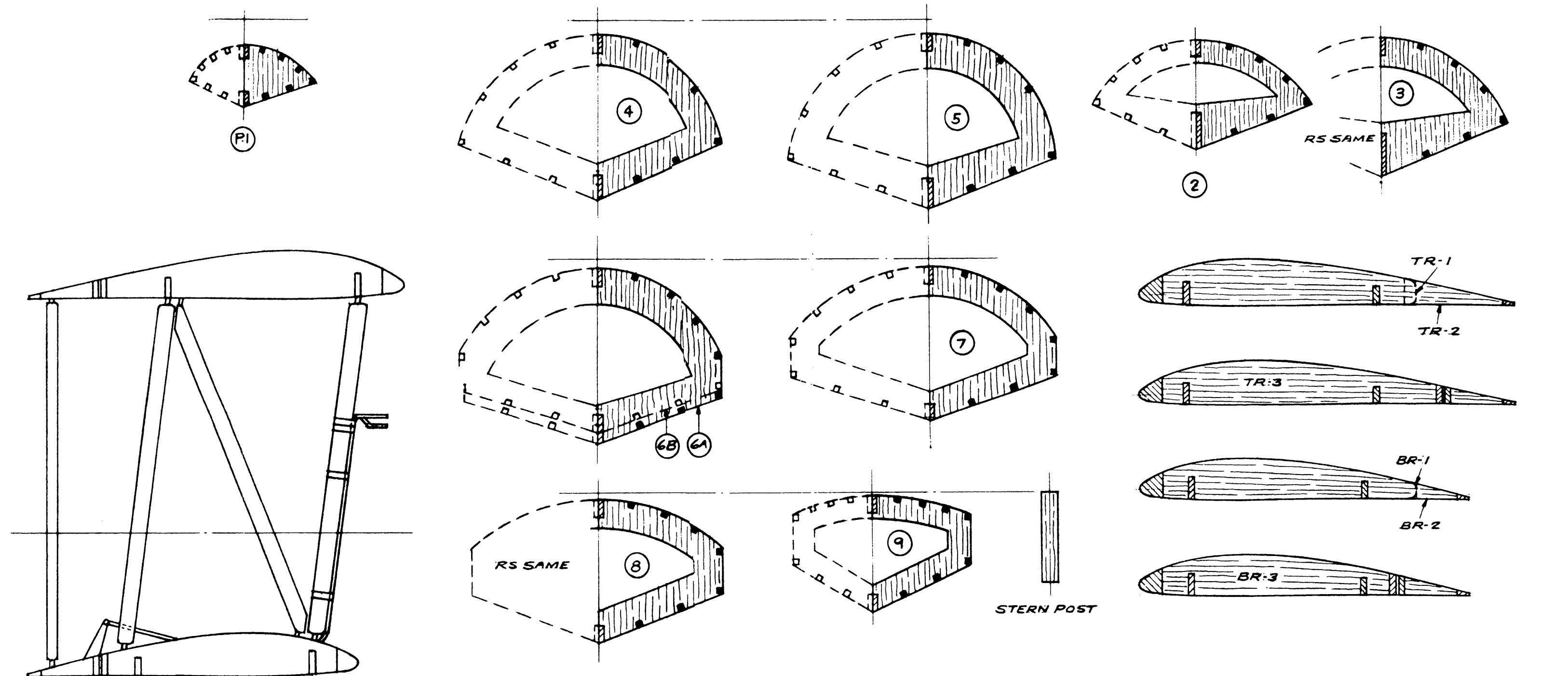
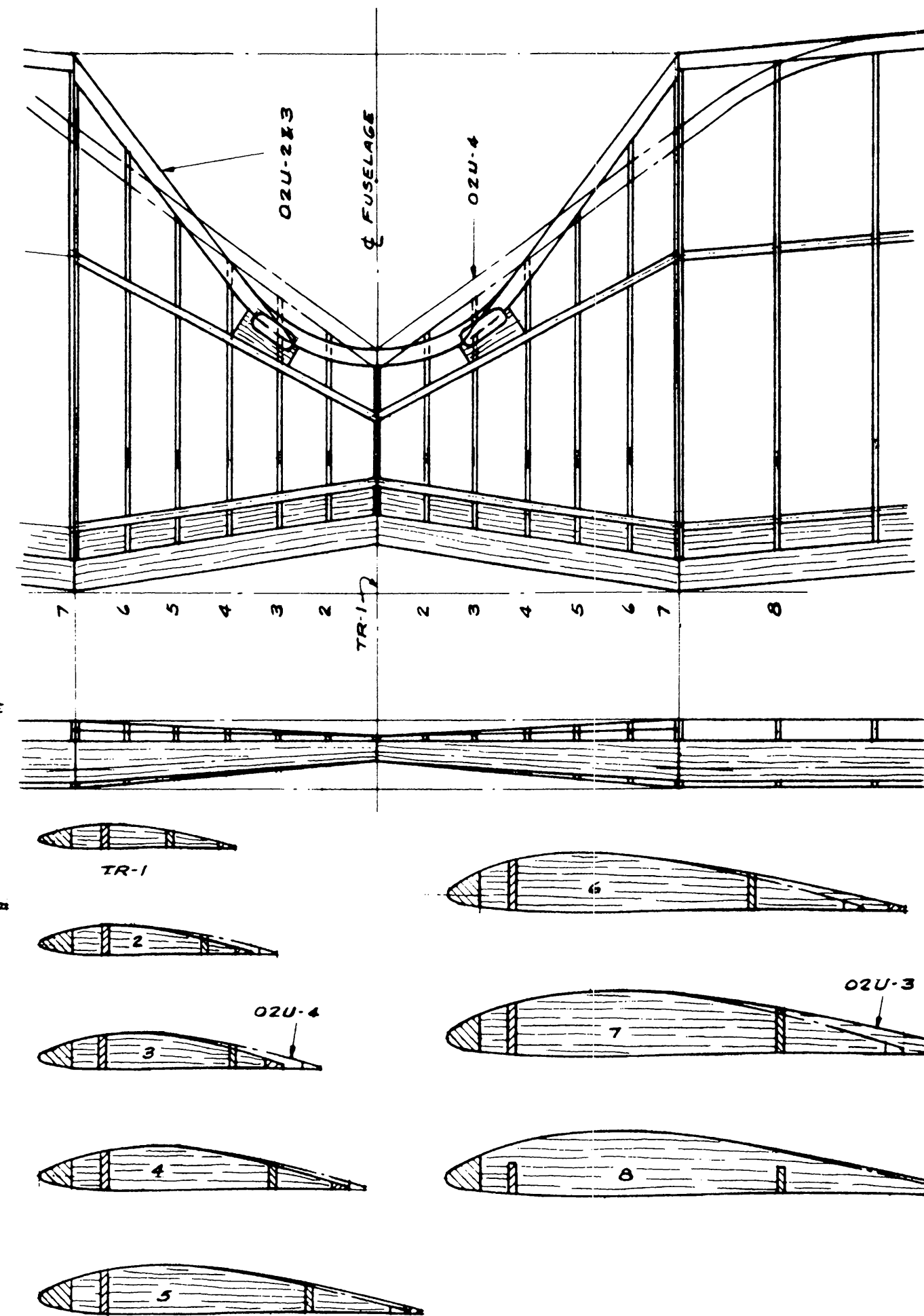


REFERENCE FOR ADDITIONAL DATA:

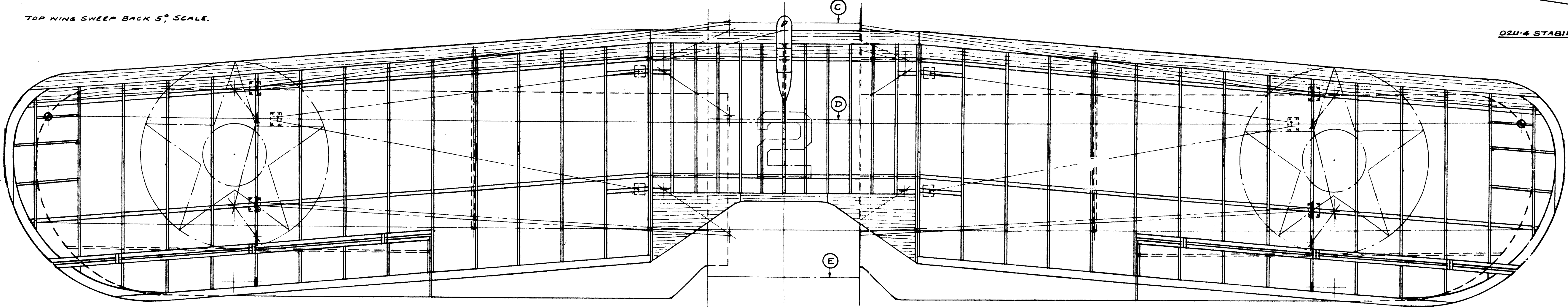
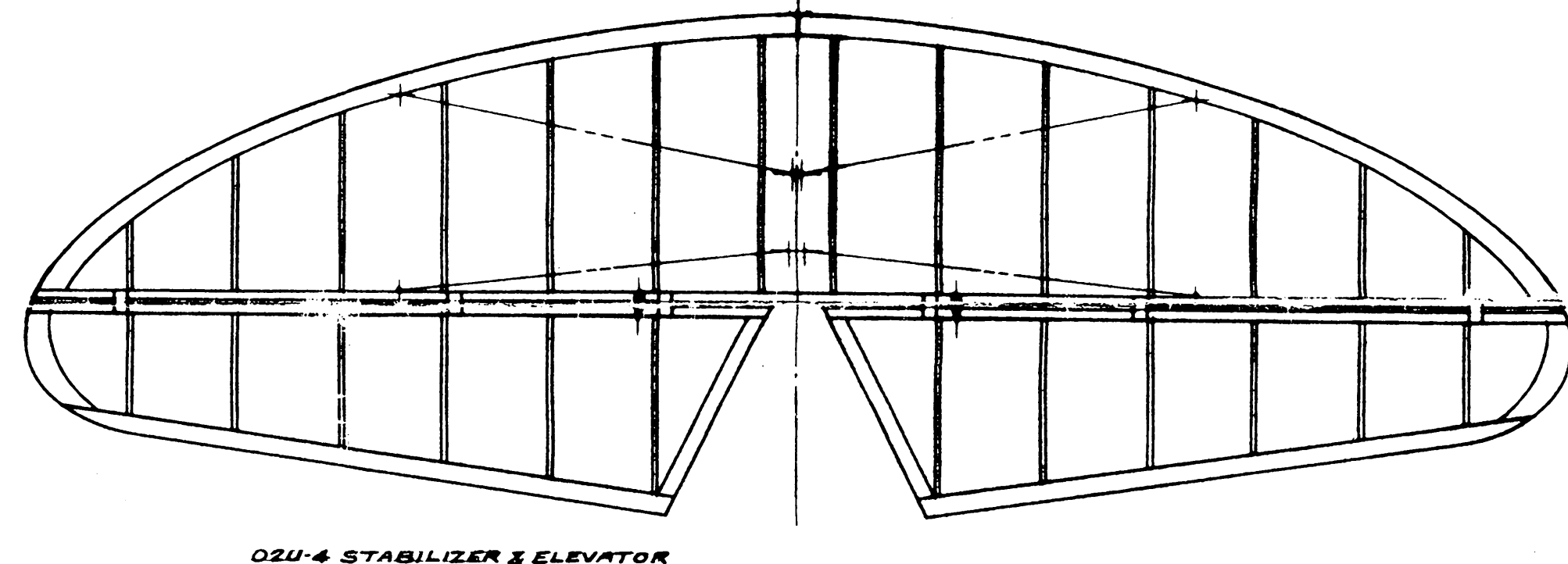
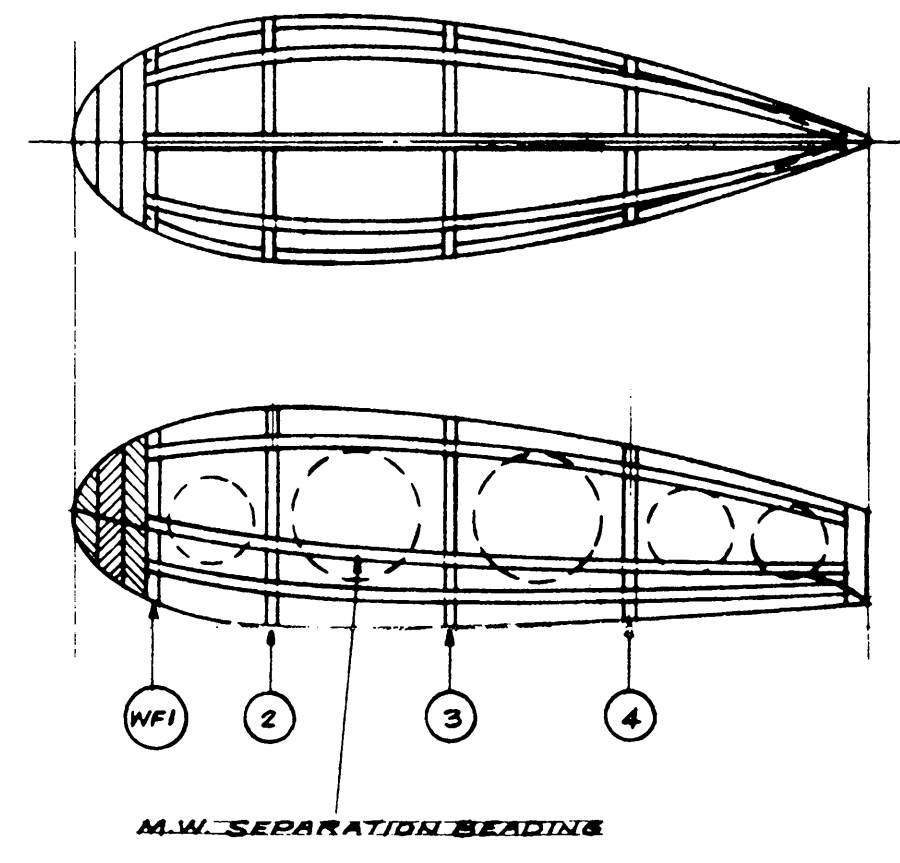
CMSCO DNG. SE-23, VOUGHT OZU, 3/16" = 1'-0"
SMITH STREET PUBL. 'HM' DNG. TVD-37, VOUGHT OZU, 3/16" = 1'-0"
DQ. HATFIELD, SCALE OUTLINES OZU-1-4, DNGS. V2A-A-B-C, V110A-B, 1/12" = 1'-0", COURTESY OF E.T. PACKARD, CMSCO.
DESCRIPTIVE ARTICLES & PHOTOS, 'AERO DIGEST', 10-28 & PERIOD, 1937-39.
SCALE DNG. OZU2, 5/64" = 1'-0", AD, 11-28.
P & W "WASP" ENGINE DETAILS, ADS IN "U.S. AIR SERVICES, 5-27-28.
AMLA 24" WS SCALE PLANS.

MODEL COLORED ENTIRELY SILVER, METAL PARTS NATURAL ALUMINUM, MISC. DETAILS BLACK. INSIGNIA AS NOTED. BLACK LETTERING, WHITE ON RUDDER BLUE & RED VERT. STRIPES. "STAR IN CIRCLE" U.S.A. INSIGNIA UPPER SURFACE TOP WING ONLY FOR OZU-1 MODELS, NO SQDN. STRIPES. U.S.A. INSIGNIA ADDED TO LOWER SURFACE BOTTOM WING & "U.S. NAVY" LETTERING ON LATER OZU-4 MODELS, AS WELL AS YELLOW UPPER SURFACE TOP WING & SQDN. CHEVRON STRIPES.

TOP WING SWEEP BACK 5° SCALE.



PITOT TUBE DETAIL ON STRUT - COPPER BANDS.

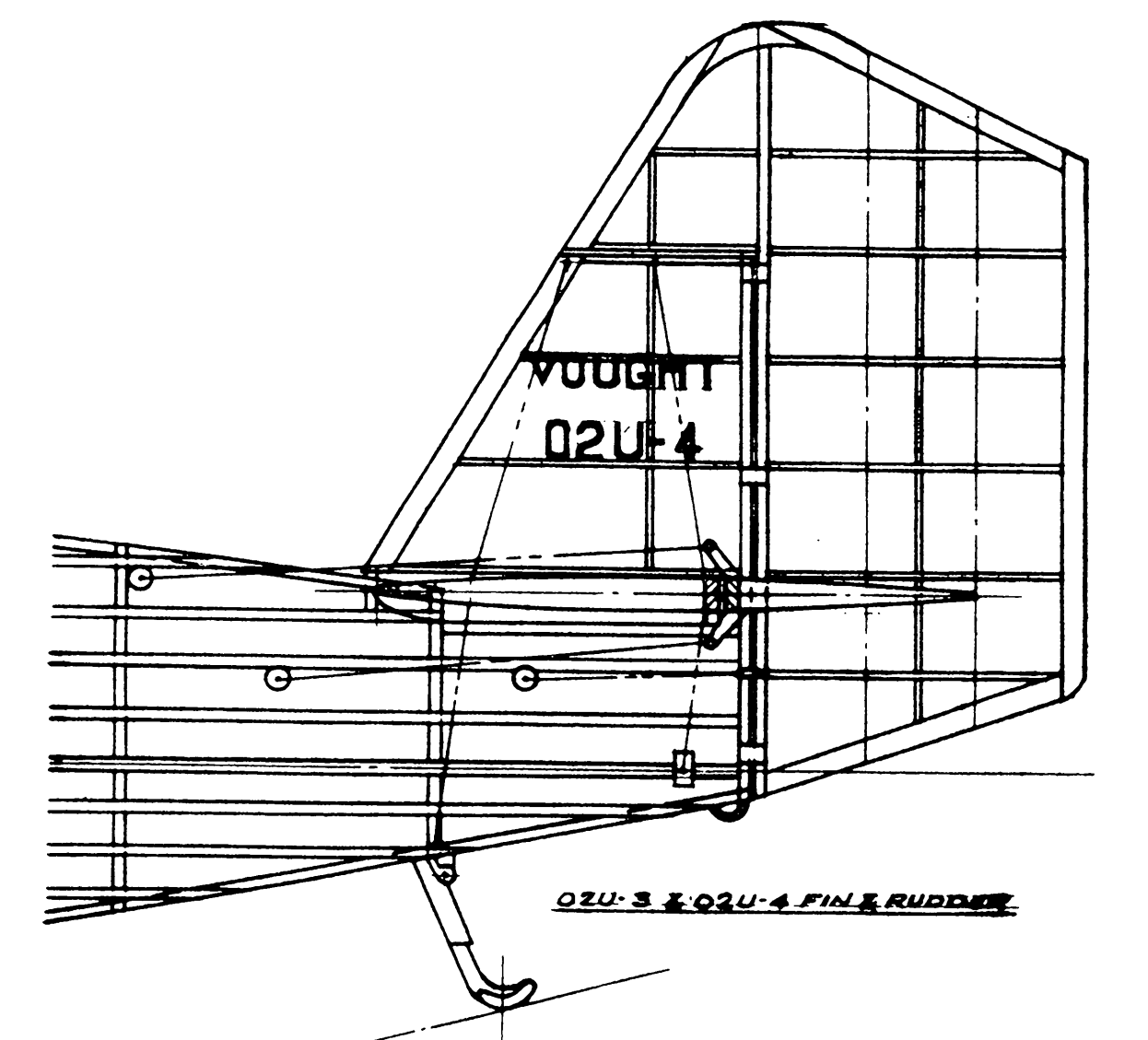
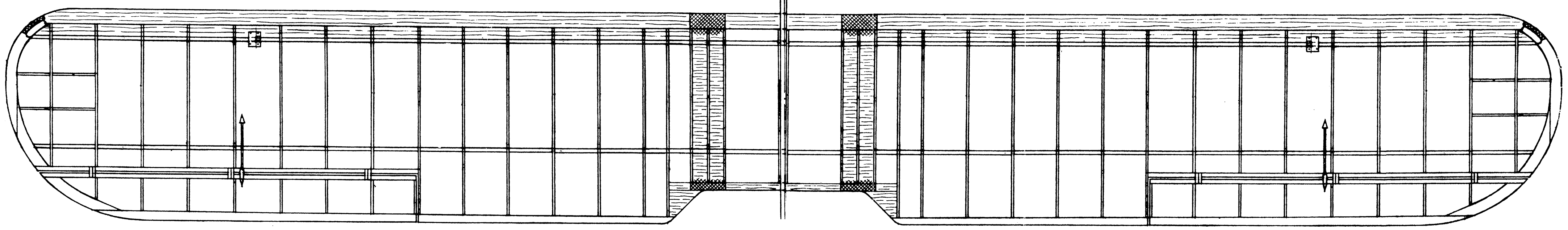


"X" TYPE AILERON HINGES - MAKE FROM THIN BRASS OR CU STRIP.
MAKE CONTROL SURFACE HORNS FROM W.P. & LIGHT M.W.

WING WALK - NONSLIP TREAD, HEAVY COMPOSITION RUBBER BLACK - ON TOP SURFACE LOWER WING AT FUSE. ROOTS.

NOTE BOTTOM WING CONNECTS DIRECTLY TO FUSELAGE CENTER BEAM. LEAVE SUITABLE AREA OPEN UNTIL FINAL ASSEMBLY, THEN "FILL-IN" & FINISH OUT WING ROOT AREAS.

RED NAVIGATION LIGHT, TOP LEFT WING TIP, GREEN ON RIGHT WING TIP.



CUSTOM SCALE DESIGN PLAN CSD-10
1927-30 VOUGHT "CORSAIR" MODELS OZU-1-2-3-4
PRATT & WHITNEY "WASP" SERIES B-425/450HP
DESIGN BY: C.E. STEINCHAK SCALE 3/4" = 1'-0"
DATE: FEB. 28, 1932 1/16" TH FULL SIZE
CSD-10
SHEET 2 OF 2