

NOTE: TOP SHEETING & CAP STRIPS ARE NOT SHOWN ON LEFT WING PLAN VIEW, FOR CLARITY

1/4" X 1/2" - LEADING EDGE

3/16" ID BRASS TUBING

NOTE ANGLE OF THIS RIB, TO ALLOW WING PANEL TO FIT FLUSH AGAINST FUSELAGE SIDE

1/8" SHEET - VERTICAL GRAIN SHEAR WEBBING

1/16" ID BRASS TUBING

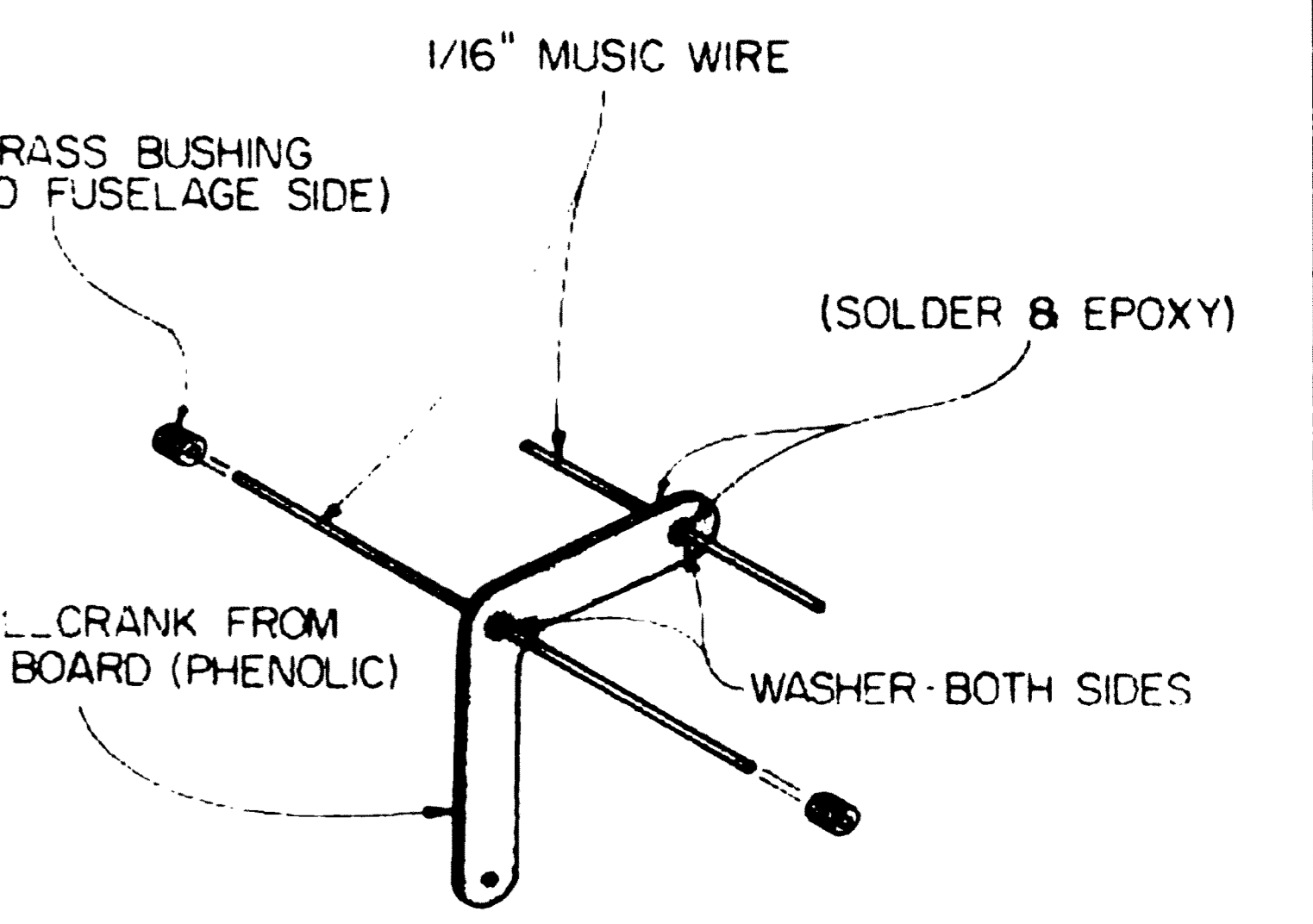
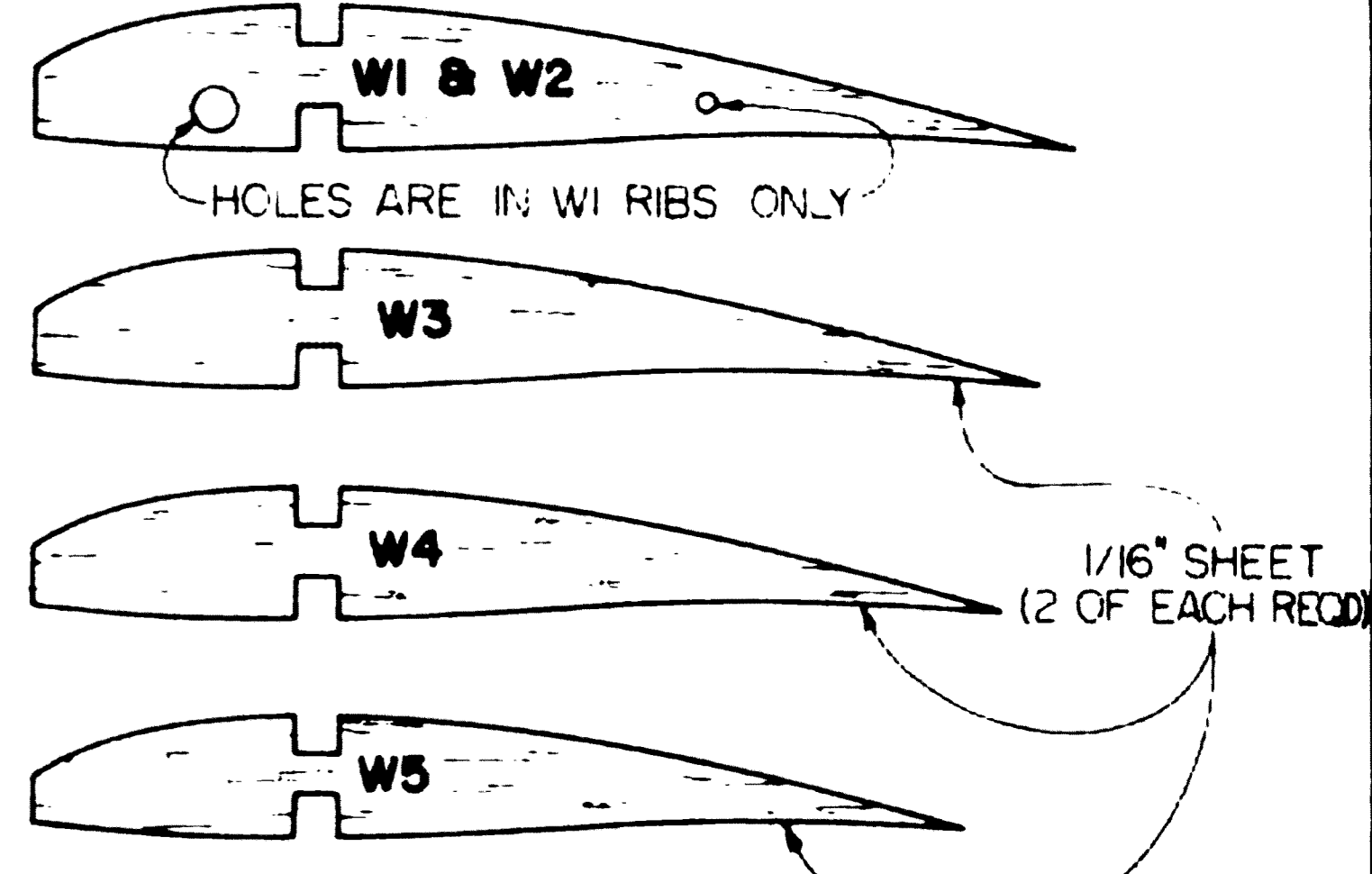
3/16" SHEET - TIP

3/16" SHEET

LIGHTENING HOLES

STABILATOR

W1 RIBS ARE 1/8" SHEET (8 REQD)
W2 RIBS ARE 1/16" SHEET (16 REQD)



STABILATOR BELLCRANK DETAIL
NO SCALE

© ALL COMMERCIAL RIGHTS RESERVED

TRANSATLANTIC

A 2 CHANNEL SAILPLANE DESIGN

DESIGNED & DRAWN BY JOHN GOODYEAR

PLANS BY *Old World*

0 1 2 3 4 5 6

PLAN NO. 1075

CONTROL SURFACE TRAVEL LIMITS
RUDDER - 1-1/4" EACH DIRECTION
STABILATOR - 5/16" UP & DOWN

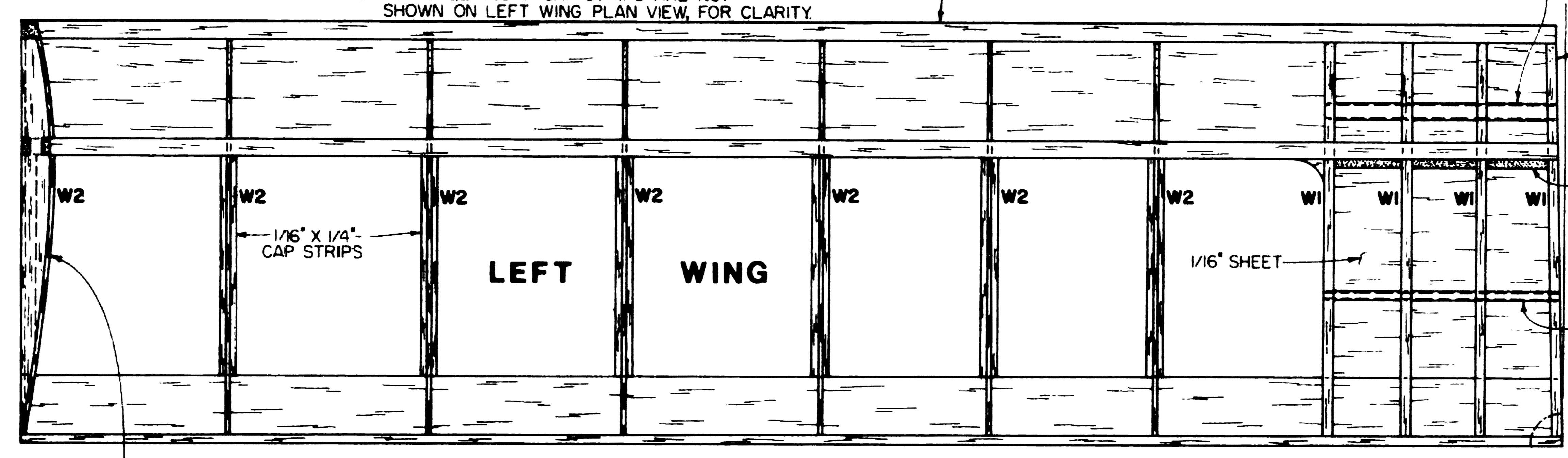
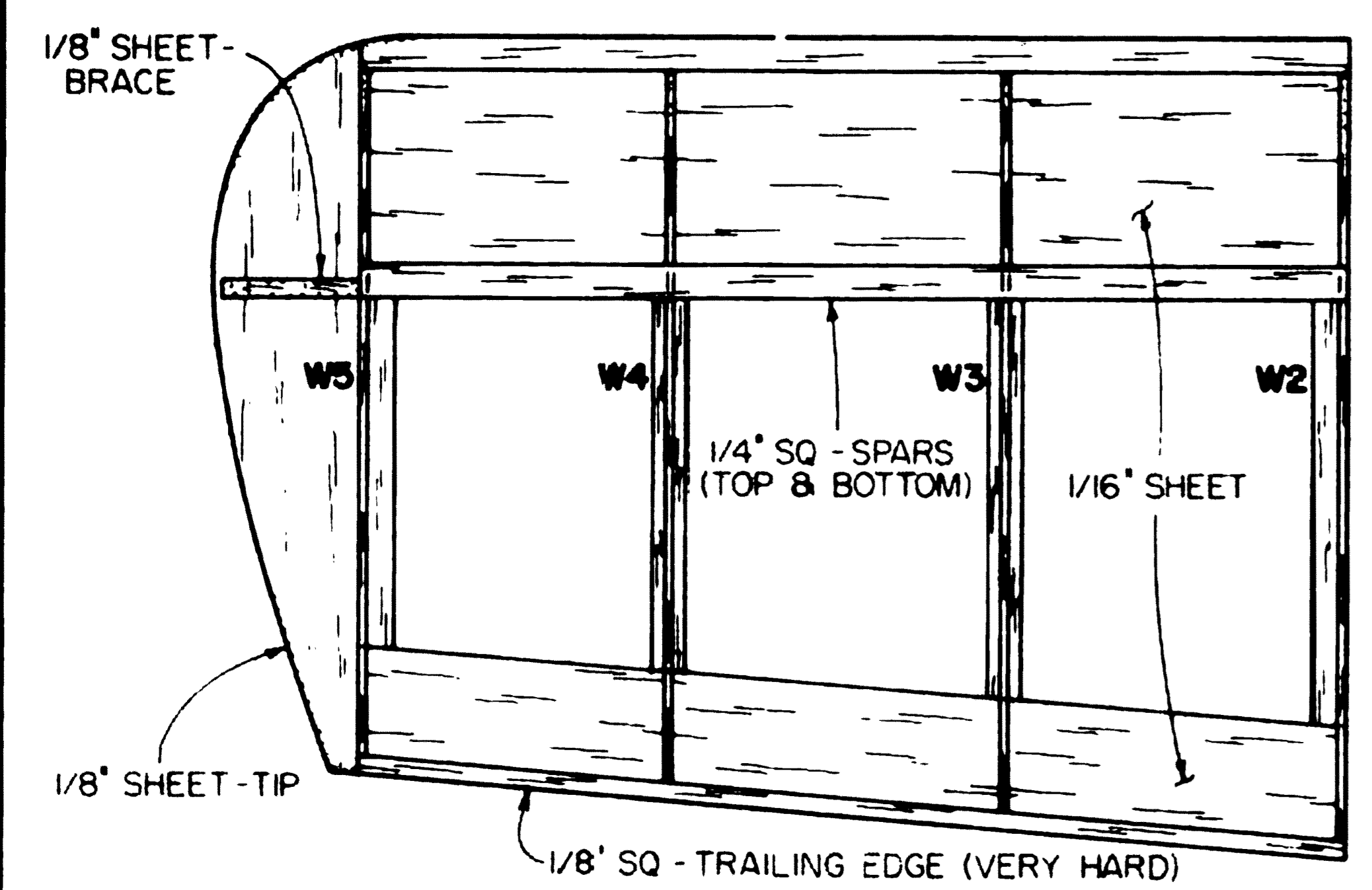
NOTE
ALL WOOD IS Balsa, UNLESS NOTED OTHERWISE

NOTE: AIRTRONICS RADIO RECEIVER & SERVOS ARE SHOWN

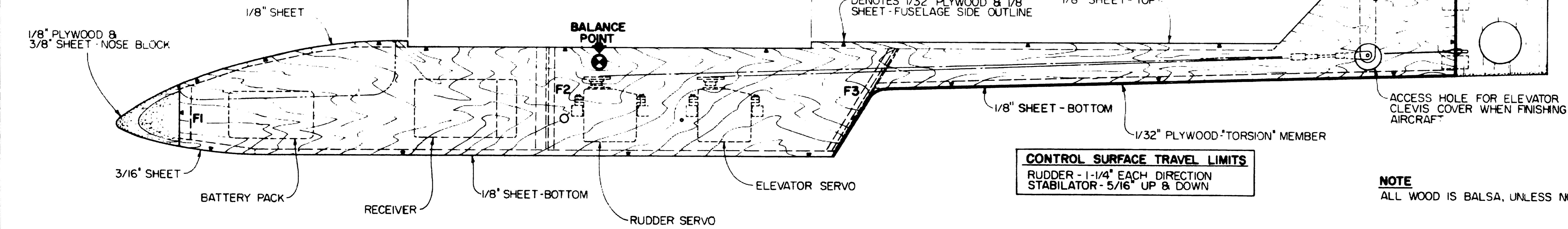
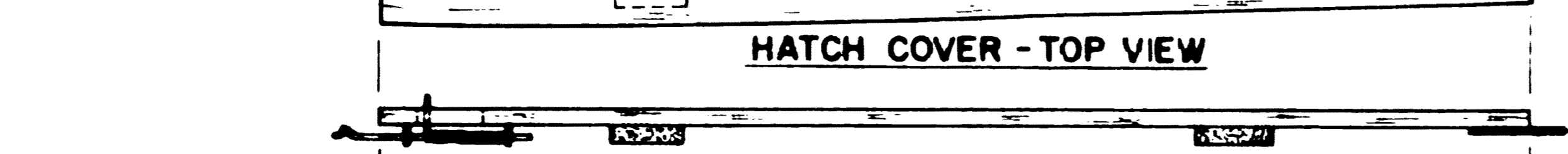
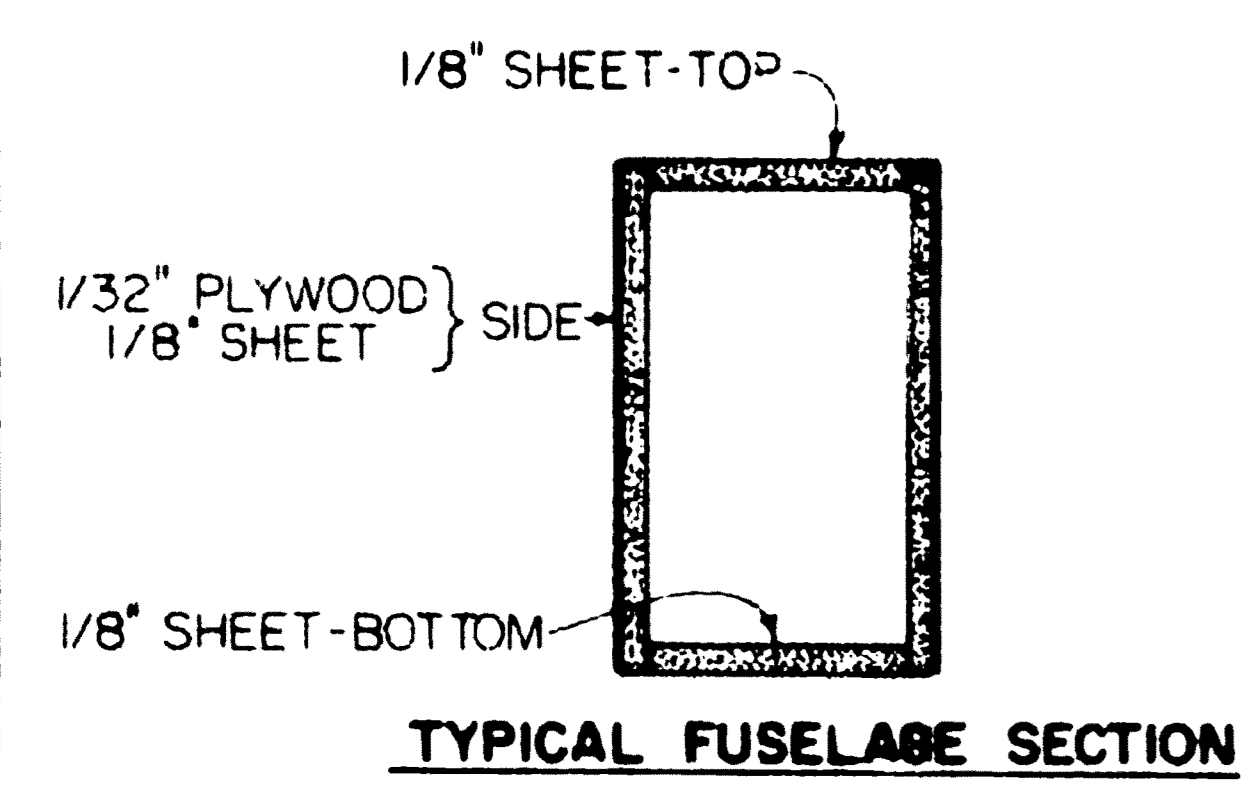
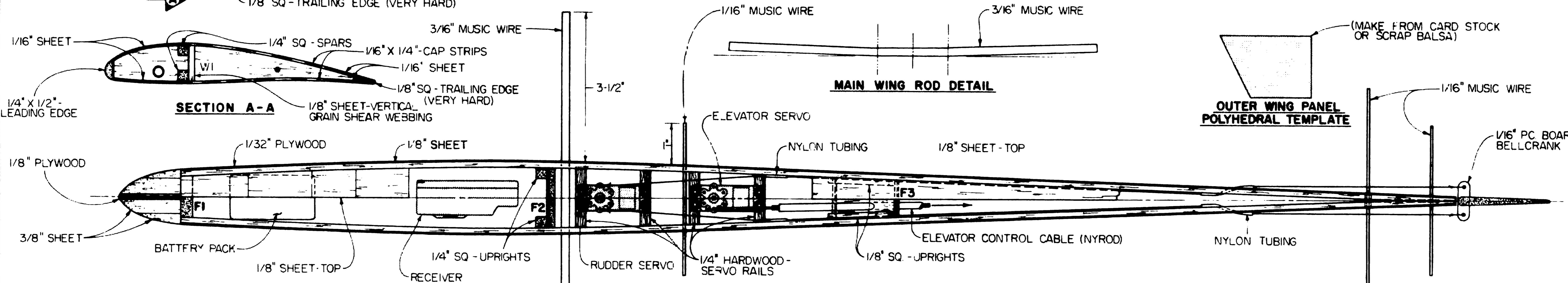
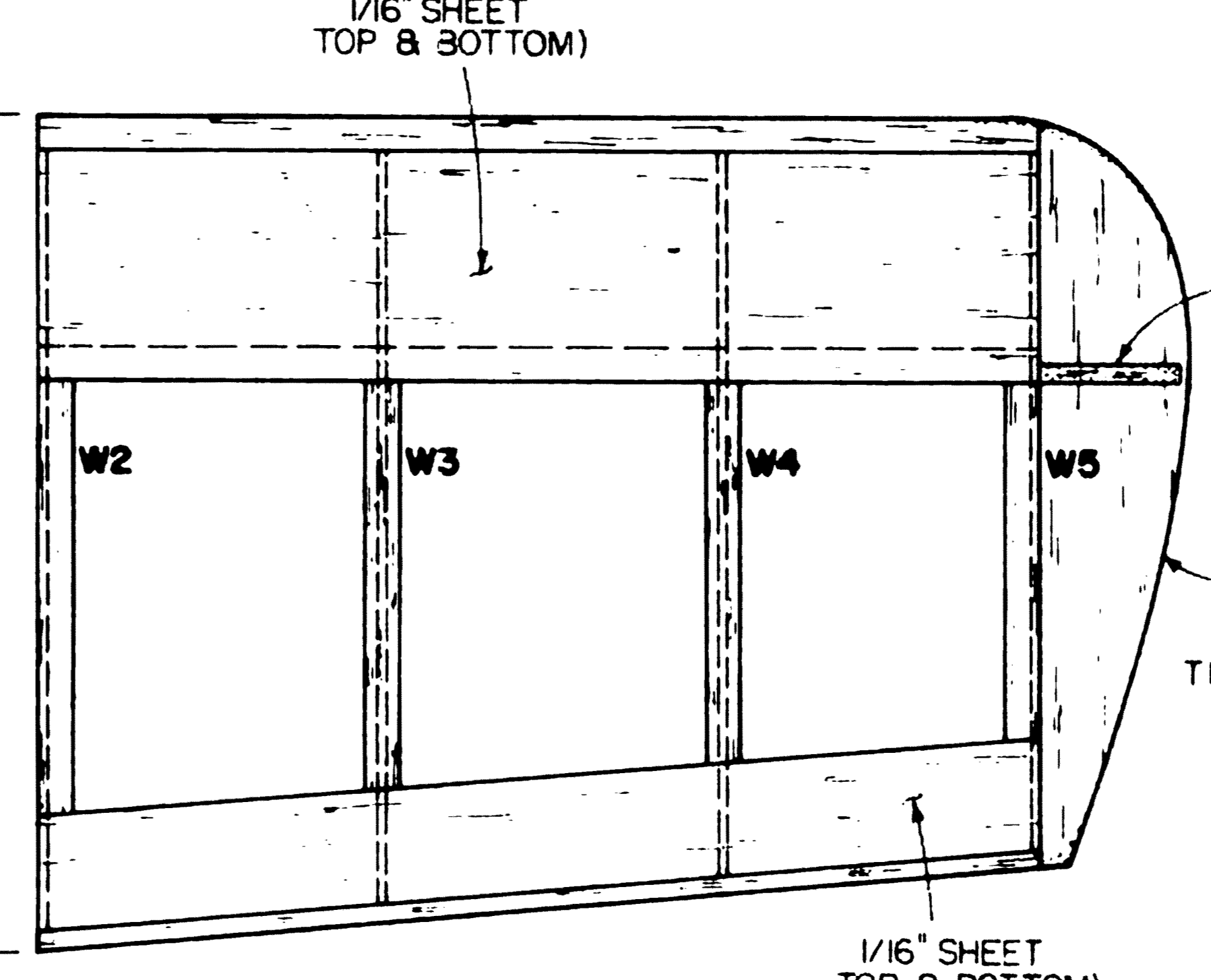
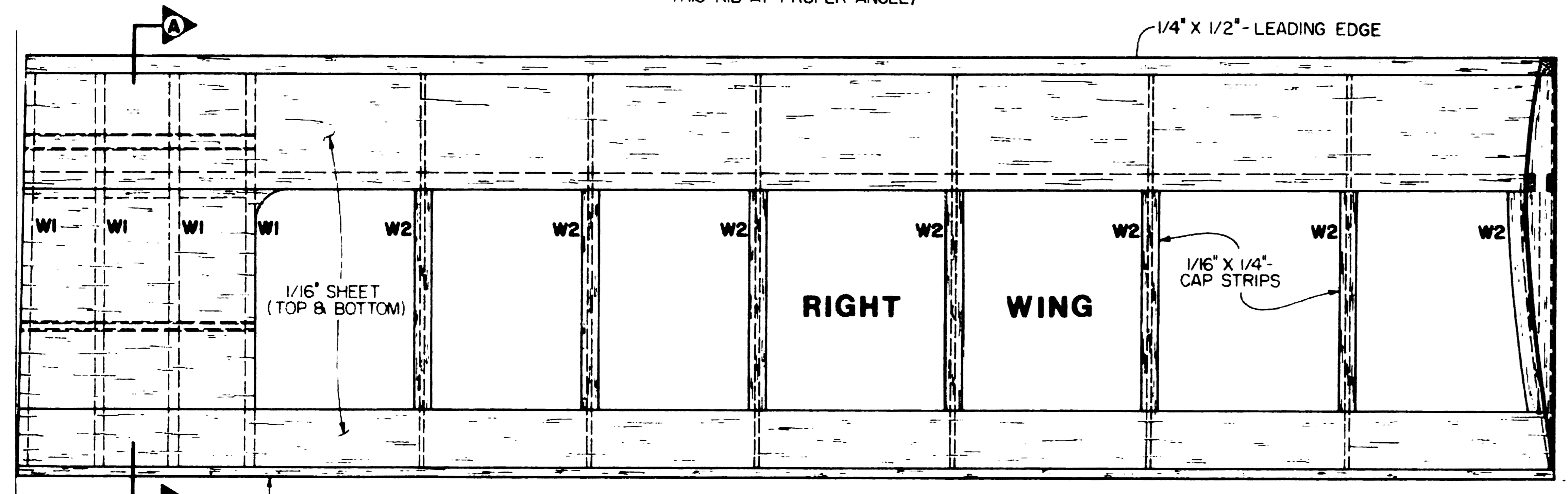
MAIN WING ROD DETAIL

OUTER WING PANEL POLYHEDRAL TEMPLATE

(MAKE FROM CARD STOCK OR SCRAP Balsa)



(USE POLYHEDRAL TEMPLATE TO POSITION THIS RIB AT PROPER ANGLE)



BALANCE POINT

DENOTES 1/32" PLYWOOD & 1/8" SHEET - FUSELAGE SIDE OUTLINE

ACCESS HOLE FOR ELEVATOR CLEVIS COVER WHEN FINISHING AIRCRAFT