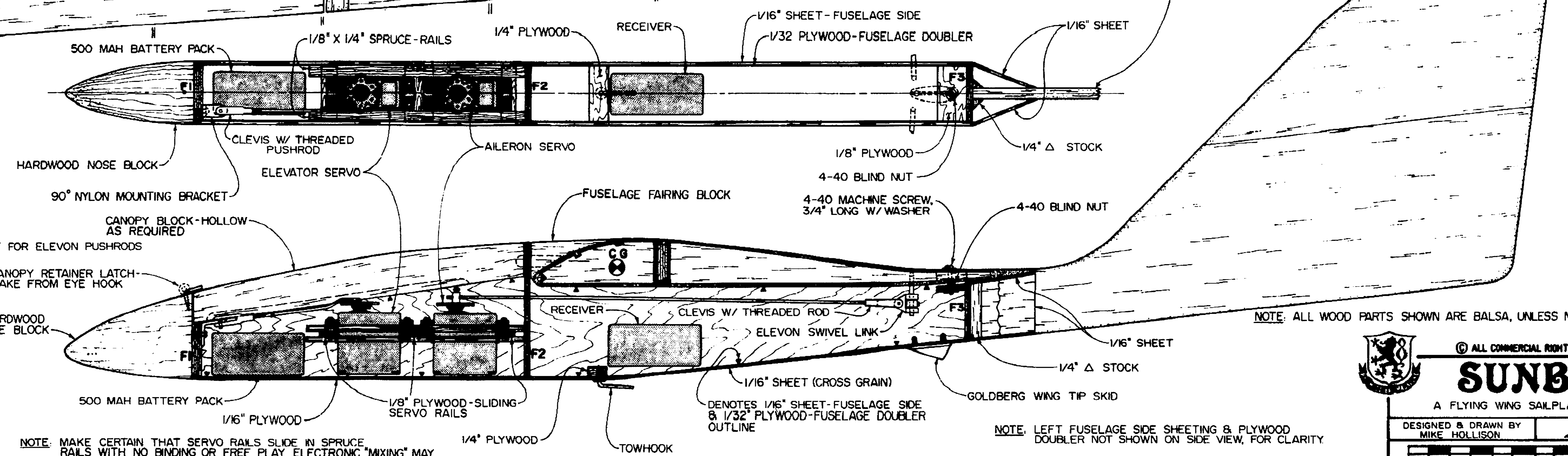
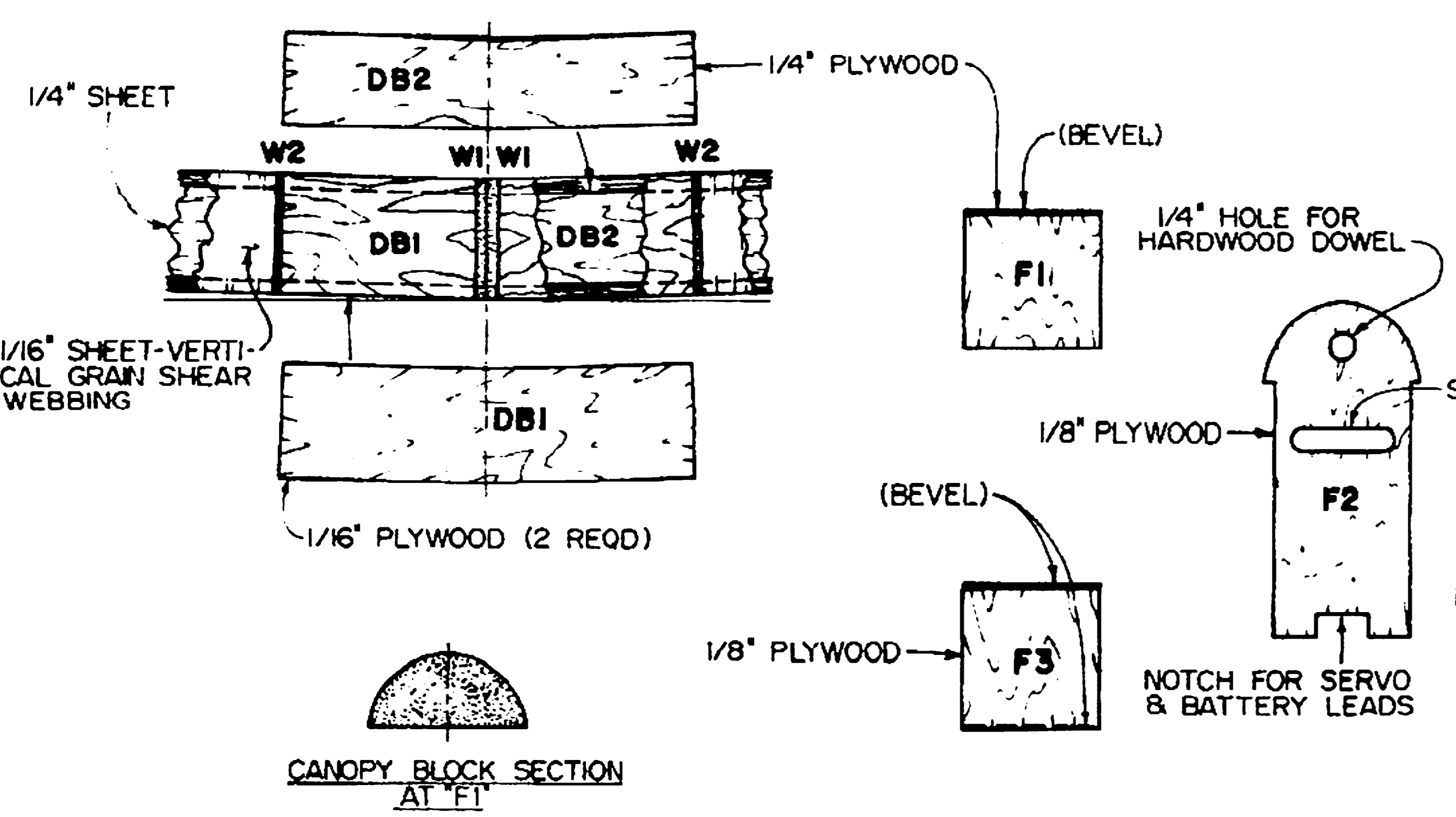
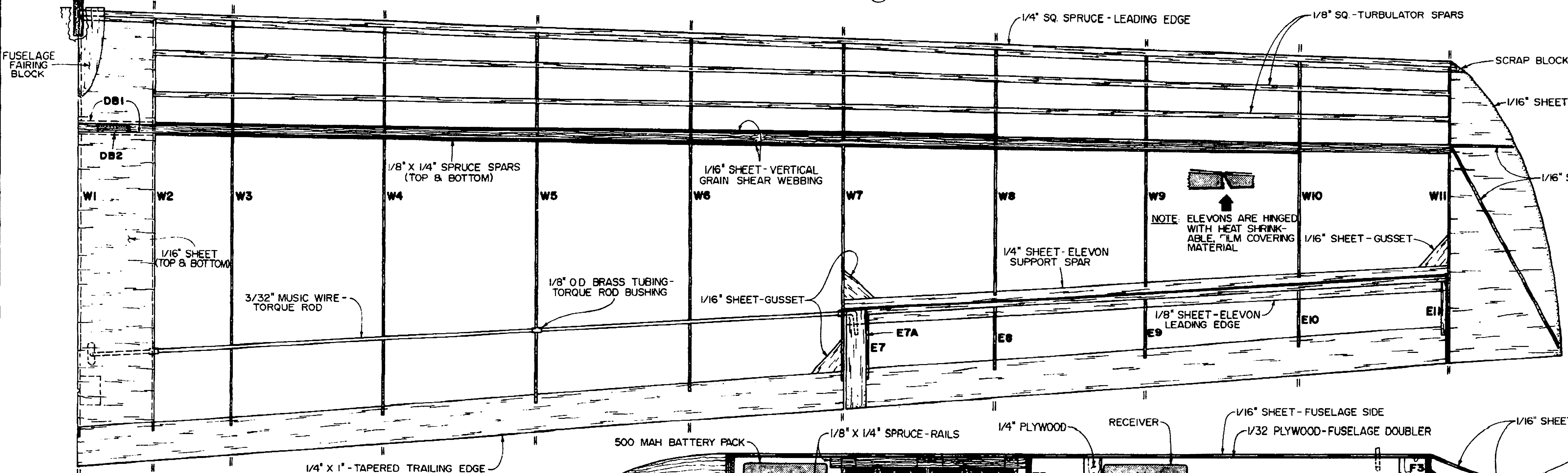


NOTE ALL WING & ELEVON RIBS ARE 1/16" SHEET, EXCEPT AS NOTED OTHERWISE 2 OF EACH REQUIRED

**RECOMMENDED CONTROL SURFACE TRAVEL LIMITS**  
 AILERON: 3/4" UP & 1/4" DOWN  
 ELEVATOR: 3/8" UP & DOWN



NOTE: MAKE CERTAIN THAT SERVO RAILS SLIDE IN SPRUCE RAILS WITH NO BINDING OR FREE PLAY ELECTRONIC "MIXING" MAY BE USED, IN LIEU OF THE MECHANICAL METHOD SHOWN

NOTE: LEFT FUSELAGE SIDE SHEETING & PLYWOOD DOUBLER NOT SHOWN ON SIDE VIEW, FOR CLARITY

© ALL COMMERCIAL RIGHTS RESERVED

# SUNBIRD

A FLYING WING SAILPLANE DESIGN

DESIGNED & DRAWN BY MIKE HOLLISON

PLANS BY *Mike Hollison*

PLAN #1193