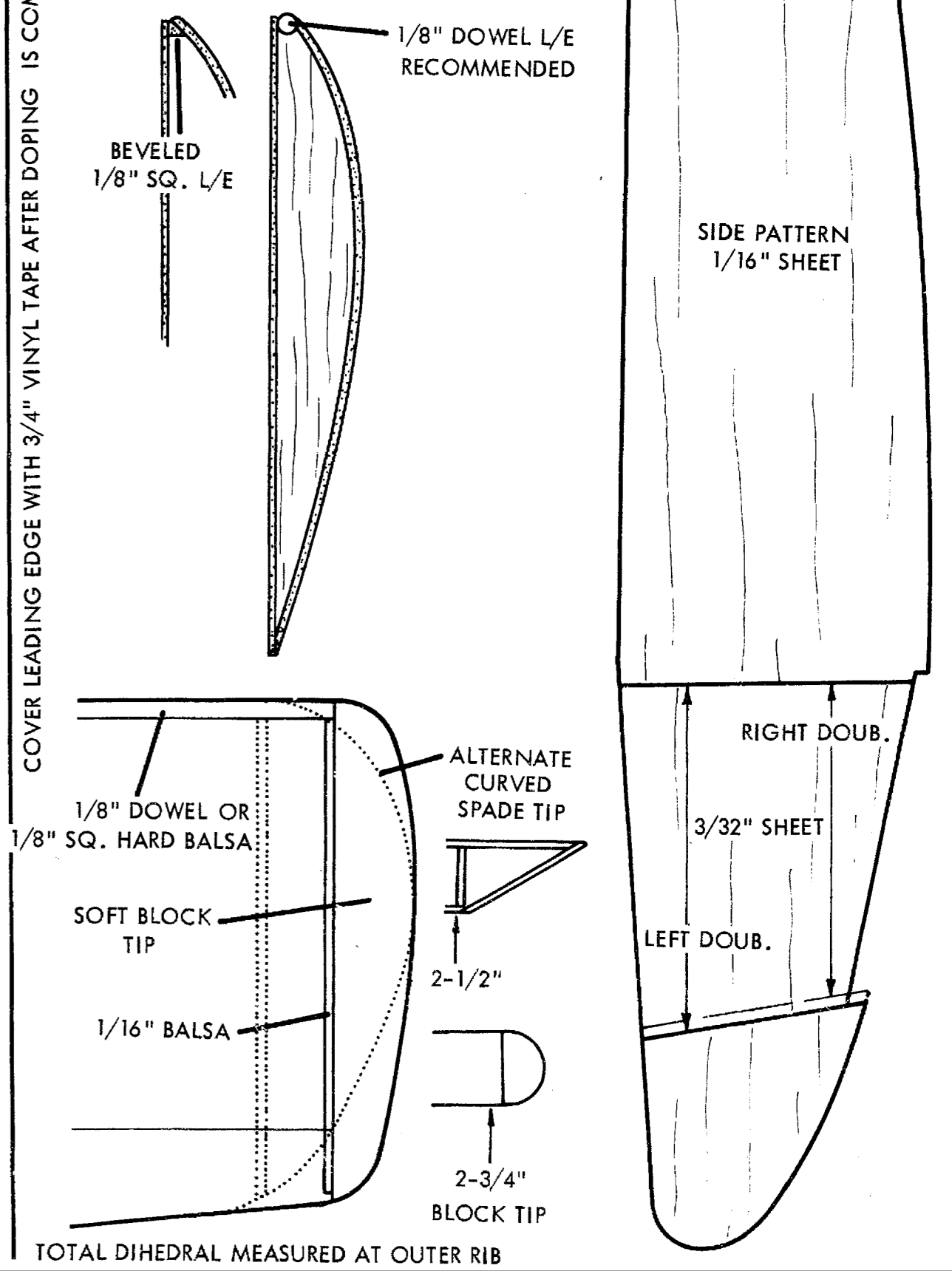


- R/C EQUIPMENT
1. TESTORS 2.4V SUPERHETE RCVR.
  2. 2 BUTTON CELLS (NICKEL CADMIUM)
  3. ADAMS 2.4V BABY ACTUATOR
- NOTE: LET ANTENNA TRAIL BEHIND FROM TAIL SKID

COVER LEADING EDGE WITH 3/4" VINYL TAPE AFTER DOPING IS COMPLETE



**skampy**

25" SPAN 8 OZ  
 .020 ENGINES  
 R/C FOR ADAMS "BABY" ACTUATOR  
 DESIGNED BY OWEN KAMPEN  
 DRAWN BY G. F.

1. WET SIDES - TAPE TOGETHER FROM A TO B
2. GLUE FROM INSIDE
3. HEADREST COVERS ▲ OPENING FROM A TO C

CLAMP "T" BETWEEN SIDES HERE

CLAMP SIDES TOGETHER HERE

B A 3"

SIDE PATTERN  
 1/16" SHEET

RIGHT DOUB.  
 3/32" SHEET  
 LEFT DOUB.

1/8" DOWEL L/E RECOMMENDED

1/8" DOWEL OR 1/8" SQ. HARD BALS

SOFT BLOCK TIP

1/16" BALS

2-1/2"

2-3/4" BLOCK TIP

TOTAL DIHEDRAL MEASURED AT OUTER RIB

BUTT GLUE 3" SHEET

1/32" SHEET BOT  
 1/16" SHEET T

1/16" BALS

1/16" BALS

USE TORQUE ROD ONLY

LOOP

CLOTH TAPE

1/16" HARD TAIL SPREADER

1/16" LAMINATE EACH SIDE OF T

CHEEK COWLS ARE OPTIONAL

1/16" WIRE T/E

1/8" NOSE DOUBLERS

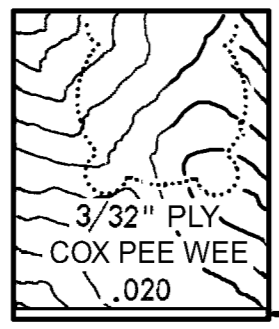
1/4" SOFT SHEET TOP

L/G

FOAM PACK BATT. COMP.

CLOTH TAPE CENTER SECT. TOP & BOTTOM

BALS + PUTTY FILLET



1/8" DOWELS

SOFT BLOCK

L/G 1/16" MUSIC WIRE

1-7/8"

2-1/8"

2-1/2"

3/32" SHEET

1/16" SHEET

1/4" x 3/32" RUD. POST

1/4" BRACE

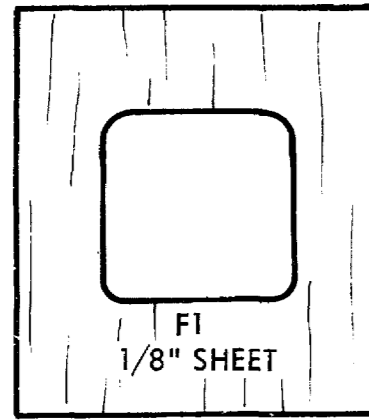
BALANCE 1-1/2" FROM L.E.

1/4" x 3/32"

ADAMS BABY ACTUATOR HERE

SANDWICH L/G BETWEEN DOUBLER & F1 USE EPOXY

1/4" SOFT SHEET



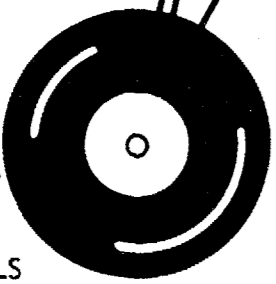
3/32" SHEET

STAB NOTCH FORMS RUDDER STOPS DETERMINES "THROW"

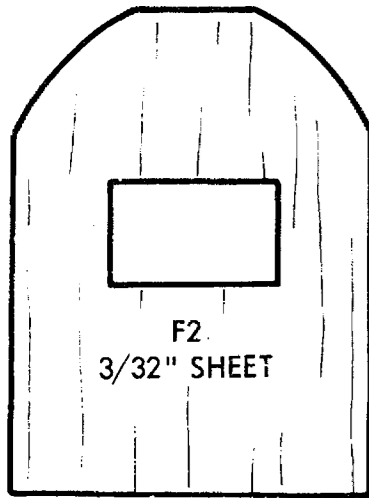
FOR PEE WEE .020 USE COX PROP 4-1/2" x 2" CUT DOWN TO 4"

3/16" SOFT SHEET

CLOTH TAPE



WINDSHIELD PATTERN



1/16" CROSSGRAIN BALS TO HERE

DIHEDRAL BRACE 1/8" BALS 2 REQ'D

1/16" BOTTOM SHEET

CLAMP "T" BETWEEN SIDES HERE

CLAMP SIDES TOGETHER HERE