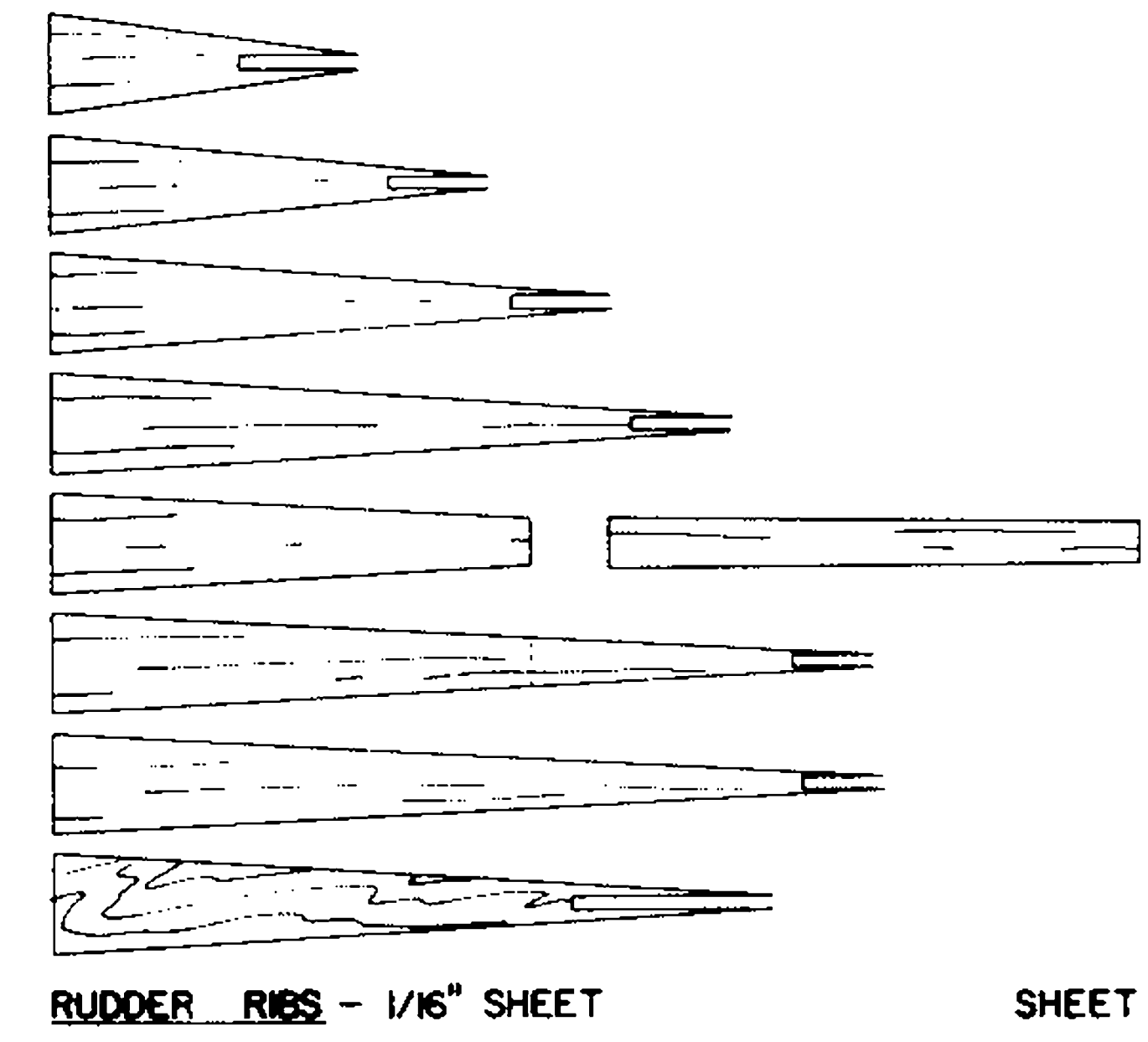
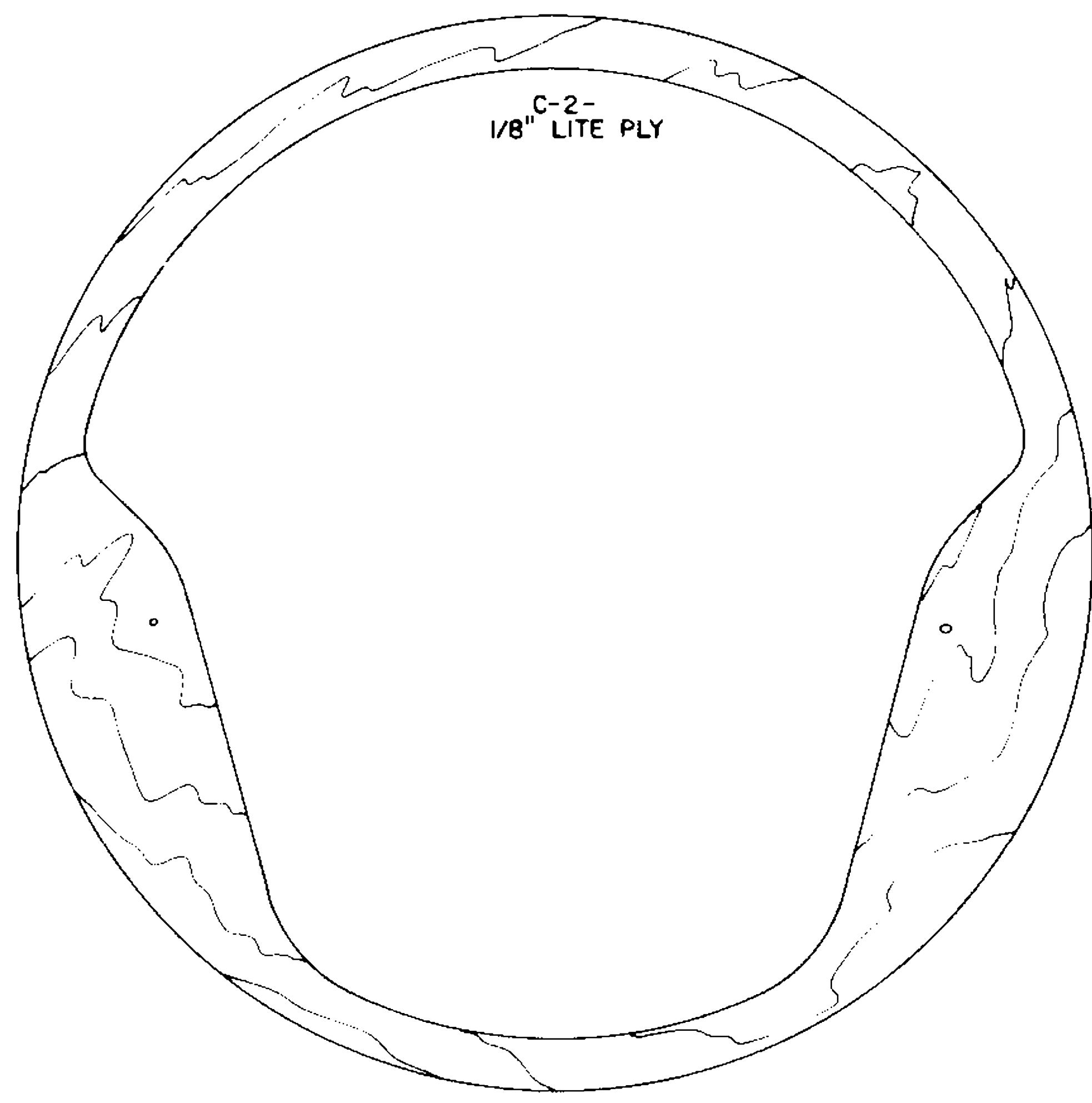
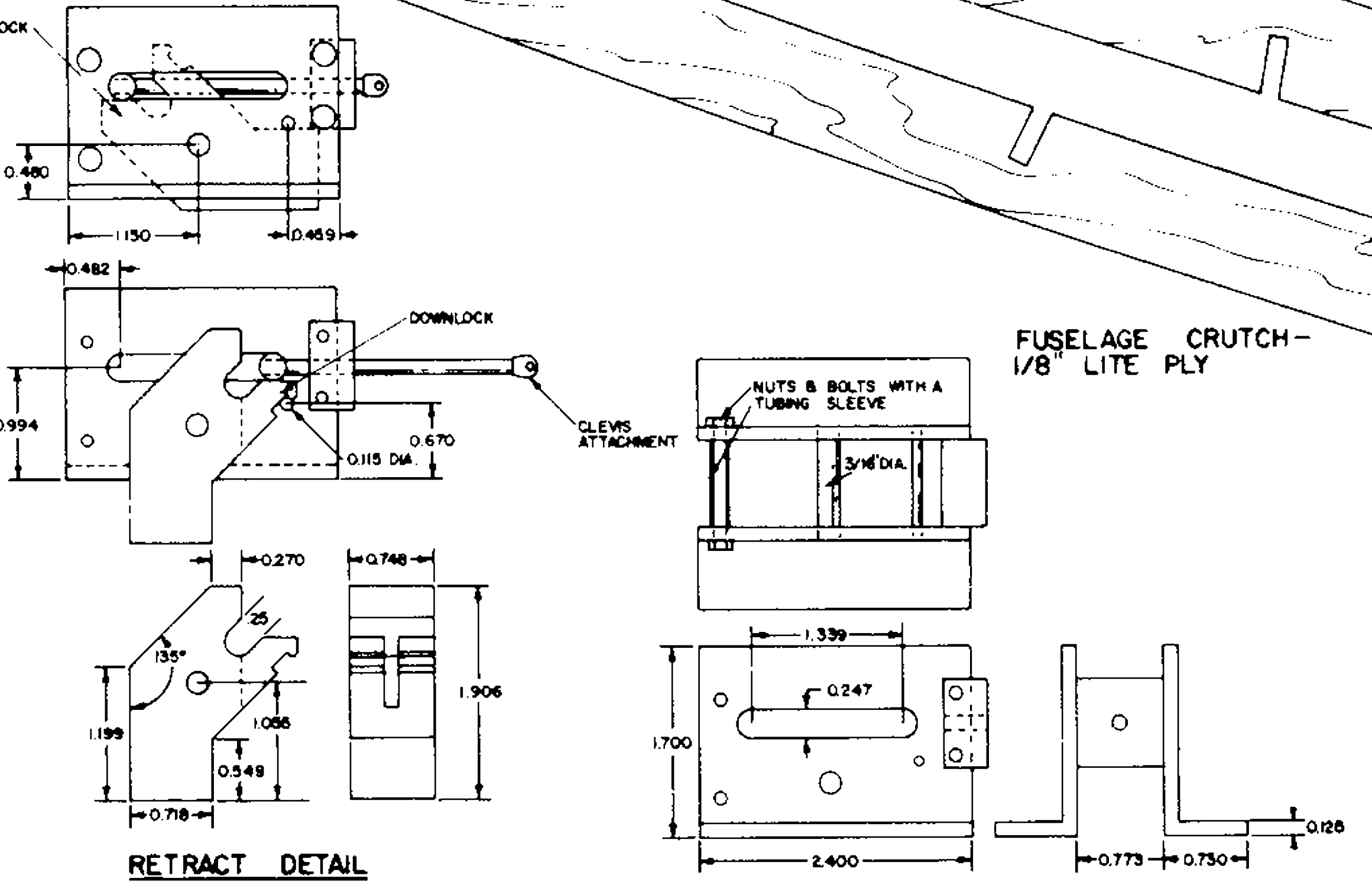
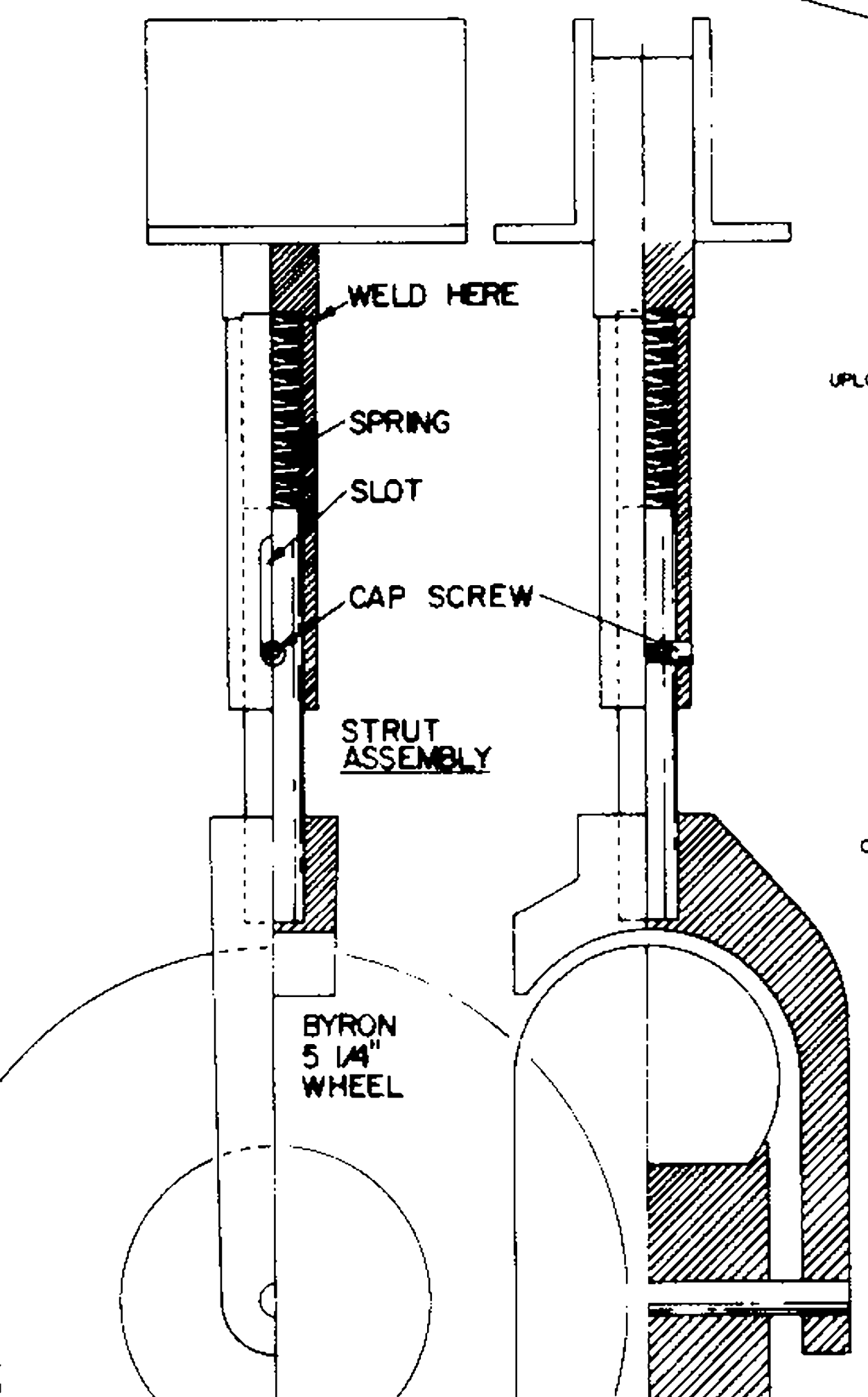
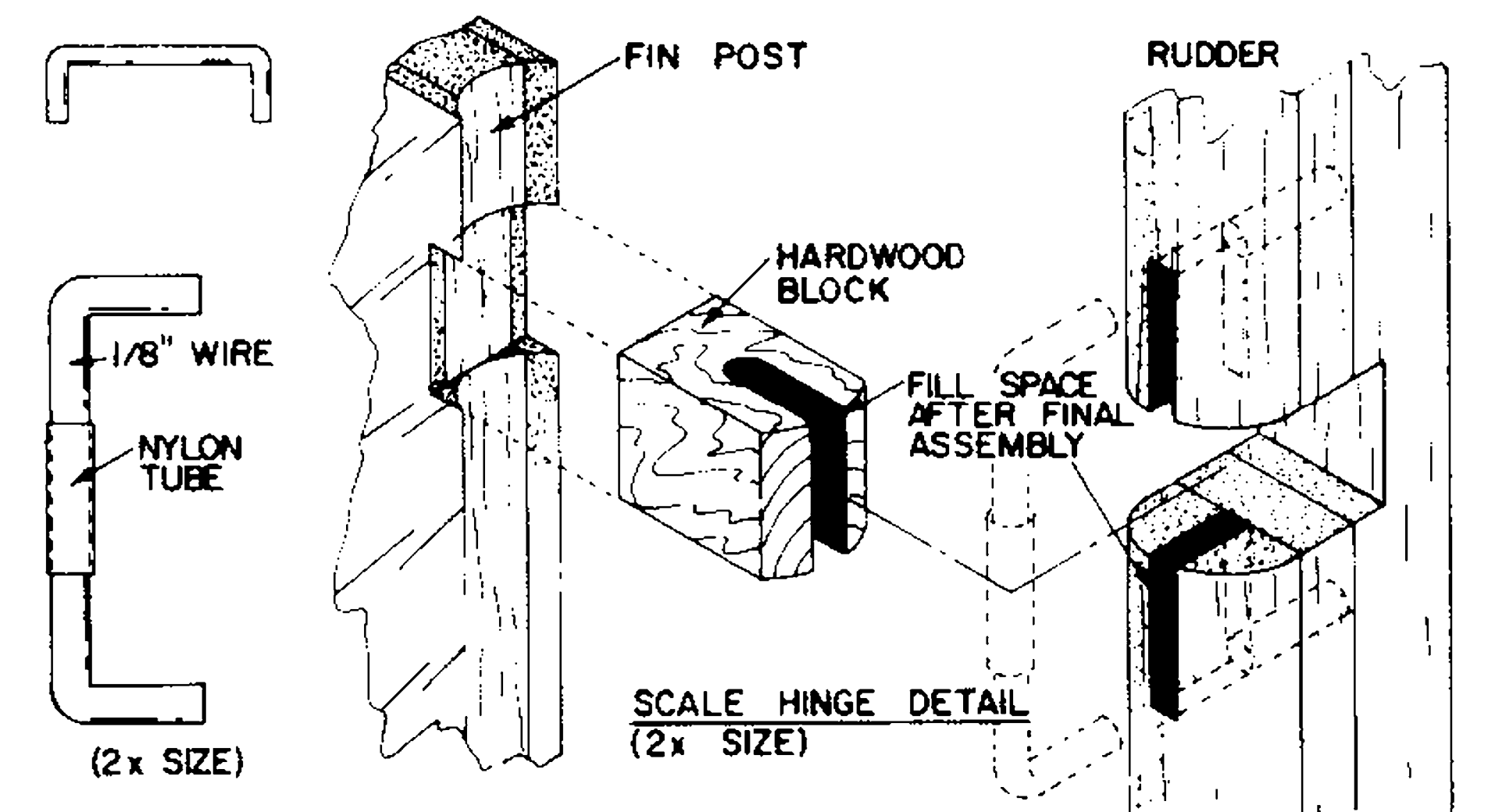
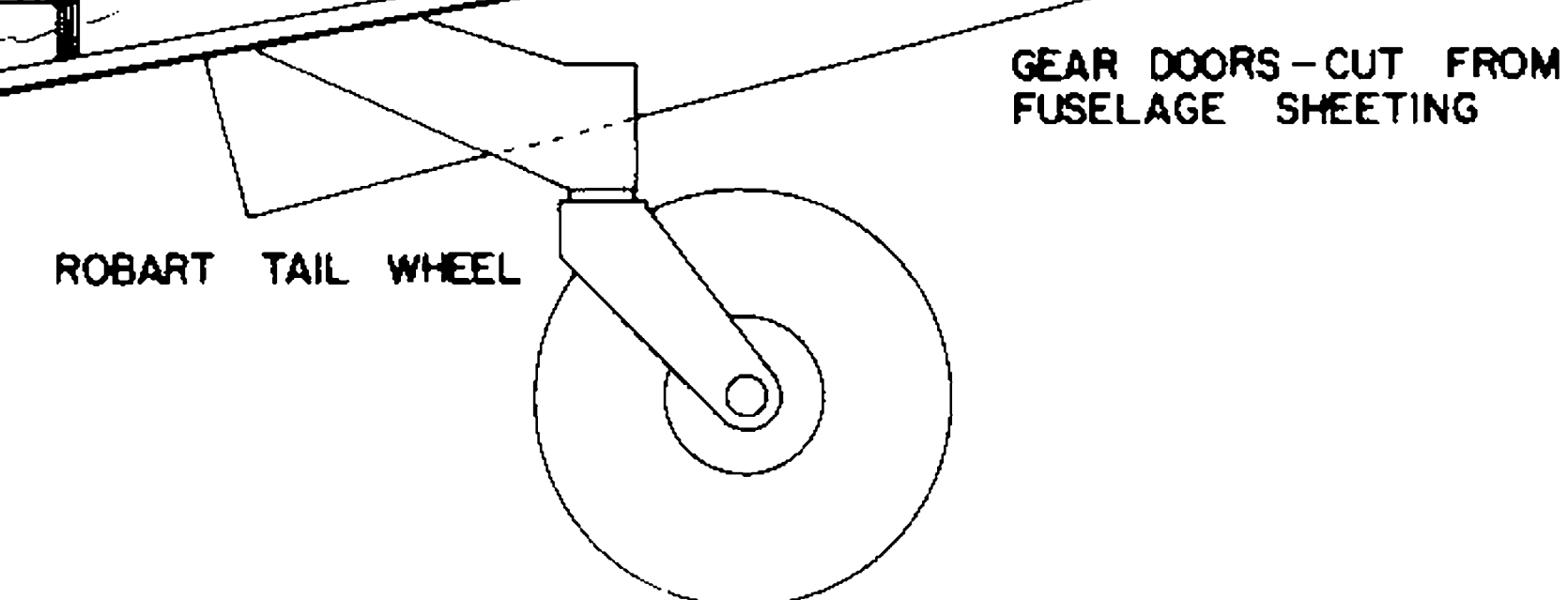
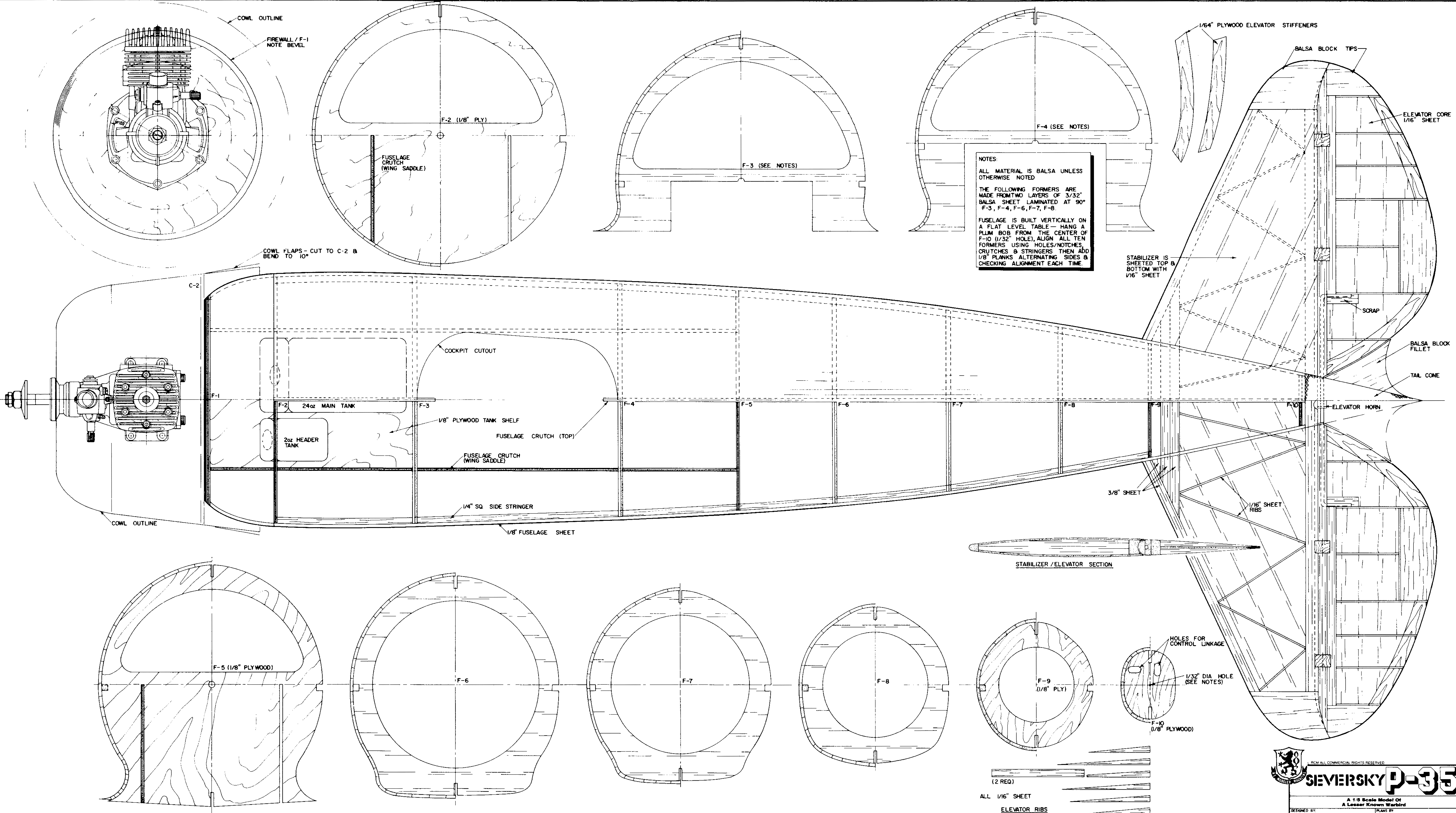
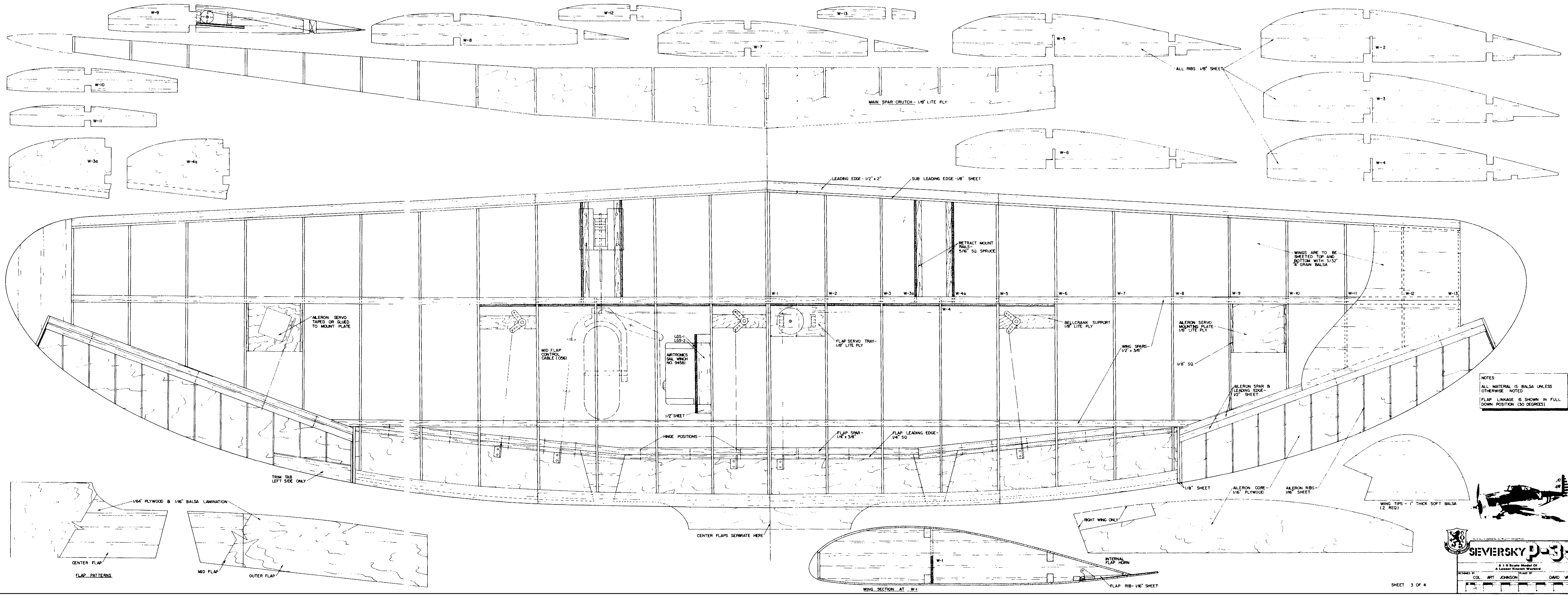


NOTES:
ALL MATERIAL IS Balsa UNLESS OTHERWISE NOTED
THE FOLLOWING PARTS ARE MADE OF 3/4oz. FIBERGLASS OVER FOAM:
- COWLING
- COCKPIT CANOPY (3 PCS.)
- AIR SCOOPS
- GUN BLISTERS (2 REQ.)
- TAIL CONE
- CENTER POD
▲ DENOTES LIMIT OF 1/8" LITE PLY CENTER CRUTCH



SEIERSKY P-35
A 1/5 Scale Model of A Lesser Known Warbird
DESIGNED BY COL. ART JOHNSON
PLANNED BY DAVID VAUGHN
SHEET 1 OF 4
PLAN NO. 1118

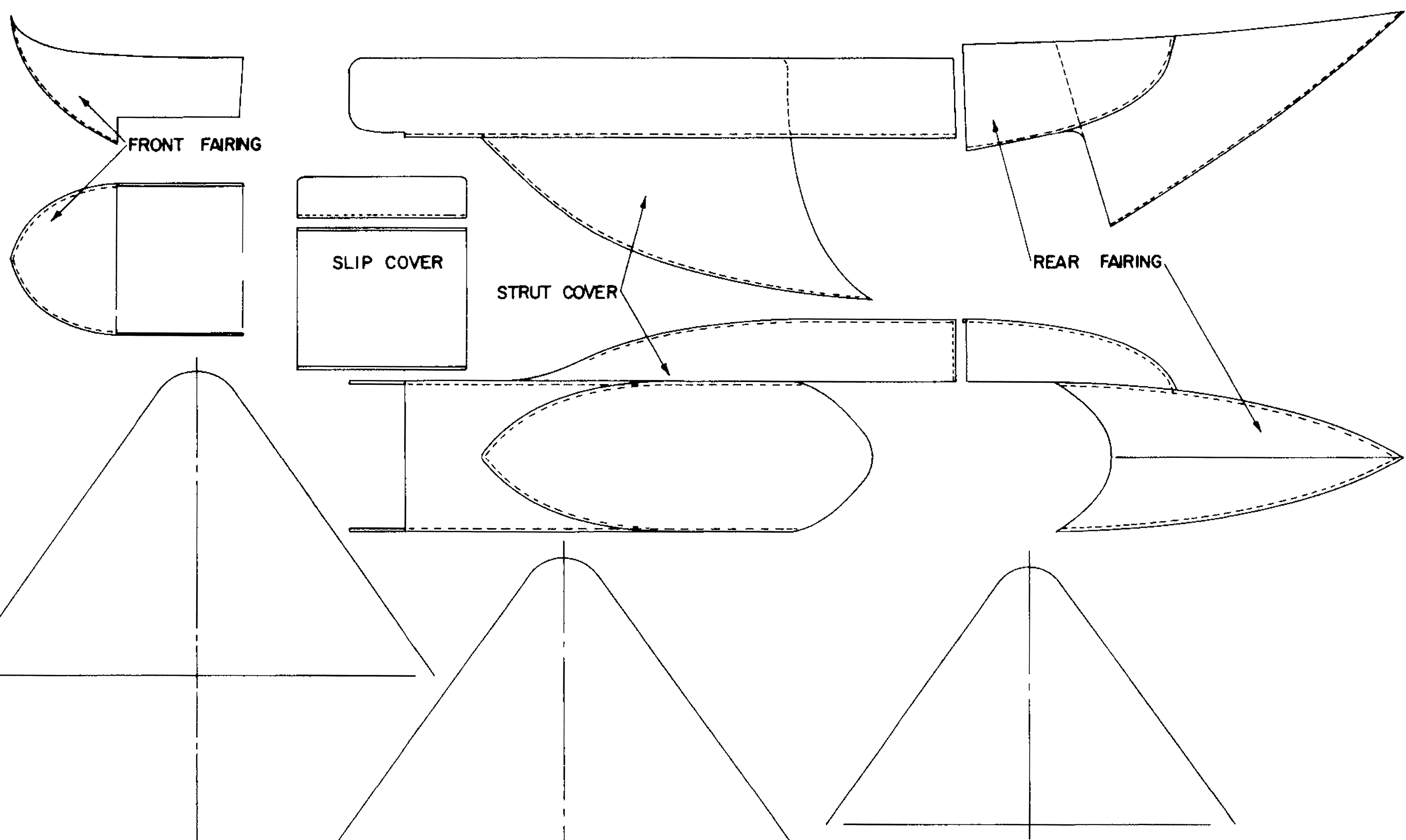




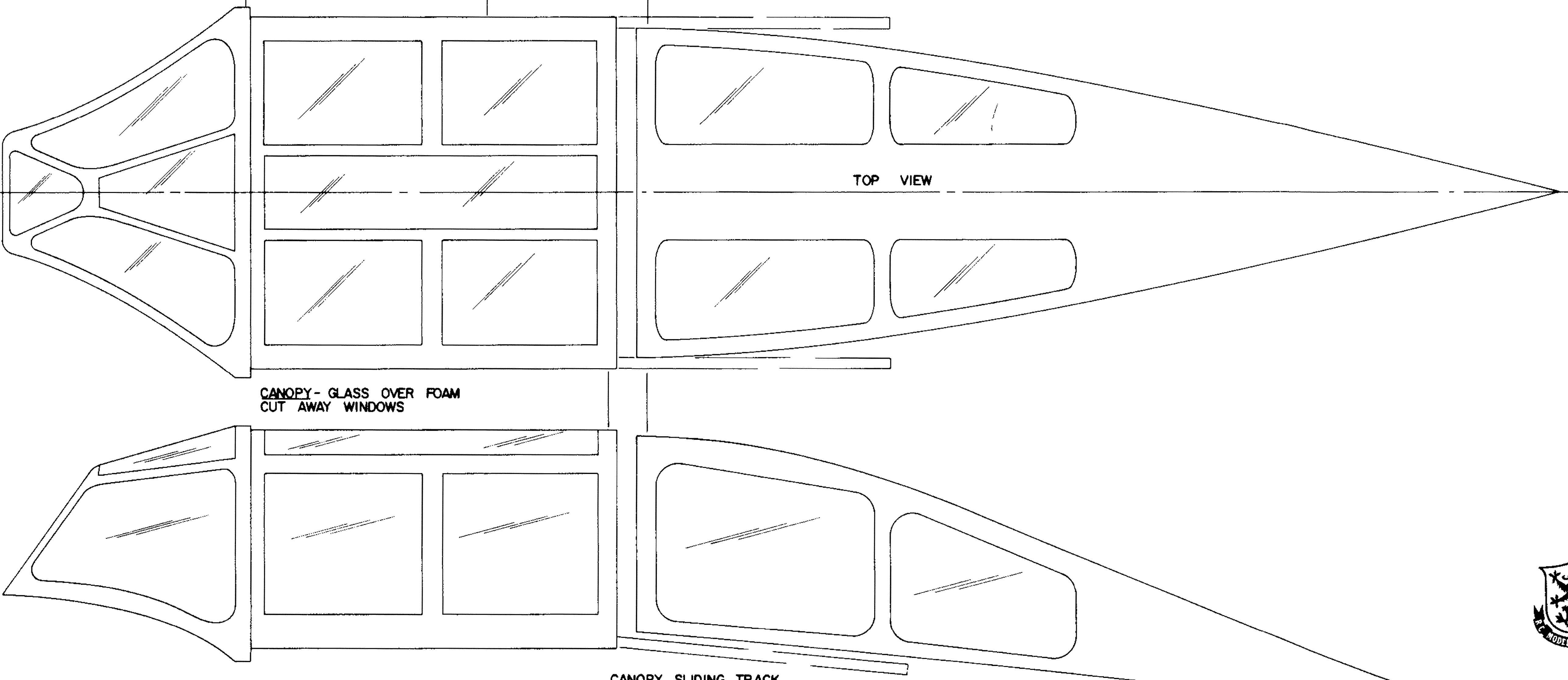
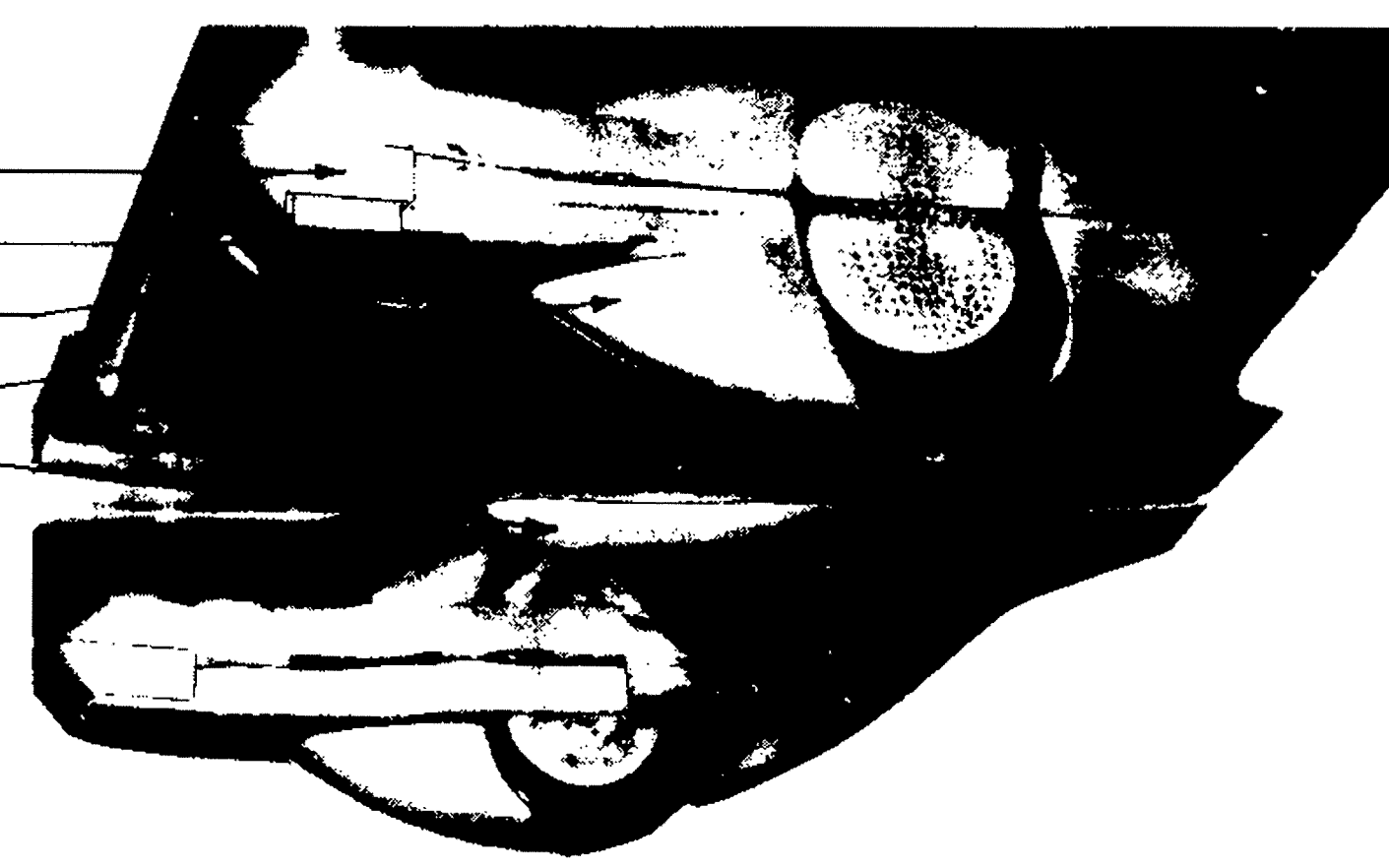
NOTES
 ALL MATERIAL IS BALS UNLESS OTHERWISE NOTED
 FLAP LINKAGE IS SHOWN IN FULL DOWN POSITION (30 DEGREES)



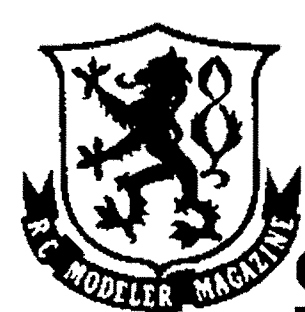
A 1/8 Scale Model of
 A Lesser Known Warbird
 DESIGNED BY COL. ART JOHNSON PLANS BY DAVID VAUGHN
 SHEET 3 OF 4
 PLAN NO. 1118



FRONT FAIRING
HINGE
SLIP FAIRING
STRUT COVER
CENTER POD



SNOW OWL LOGO



© RCM ALL COMMERCIAL RIGHTS RESERVED

SEVIERSKY P-35

A 1/5 Scale Model Of
A Lesser Known Warbird

DESIGNED BY: COL. ART JOHNSON PLANS BY: DAVID VAUGHN

