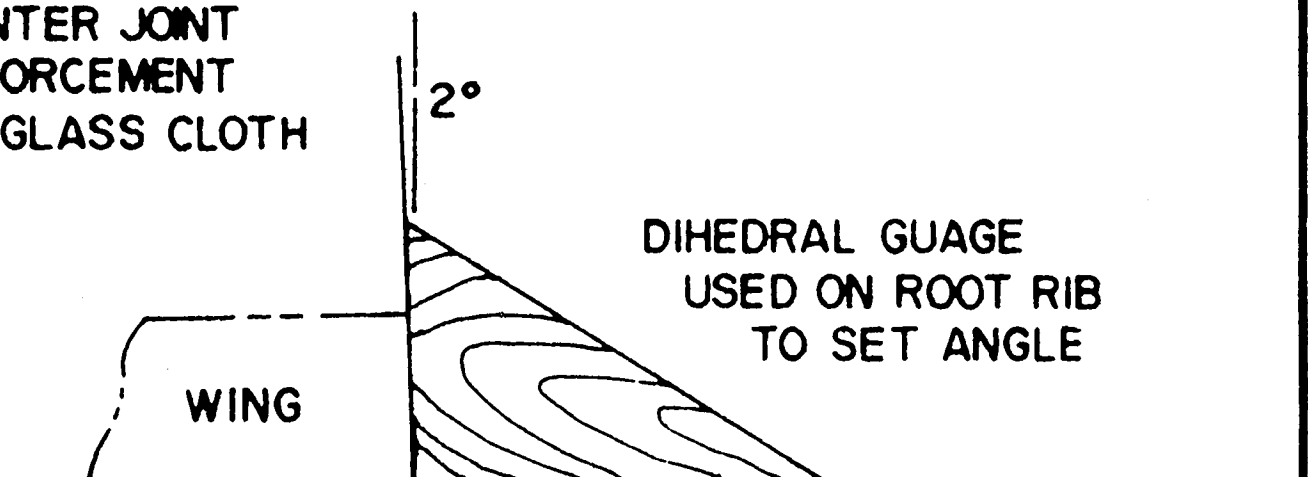
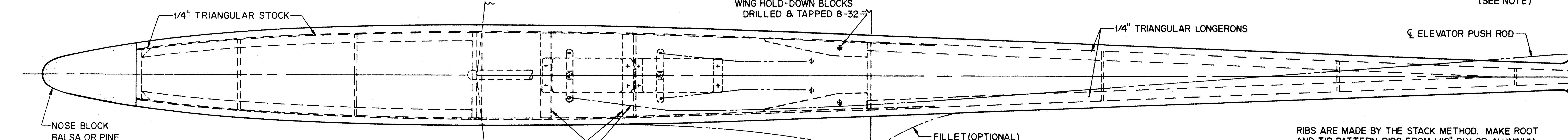
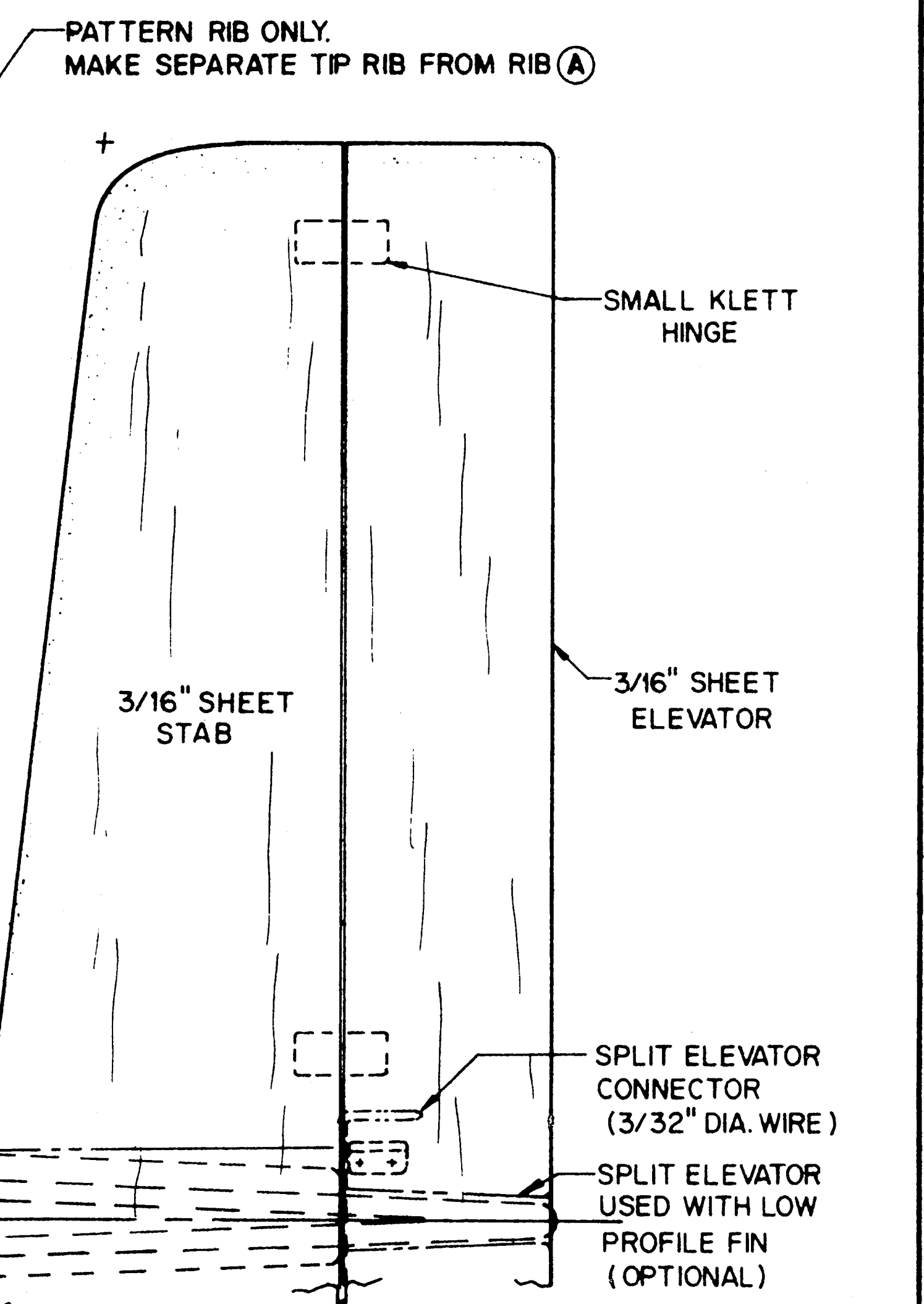
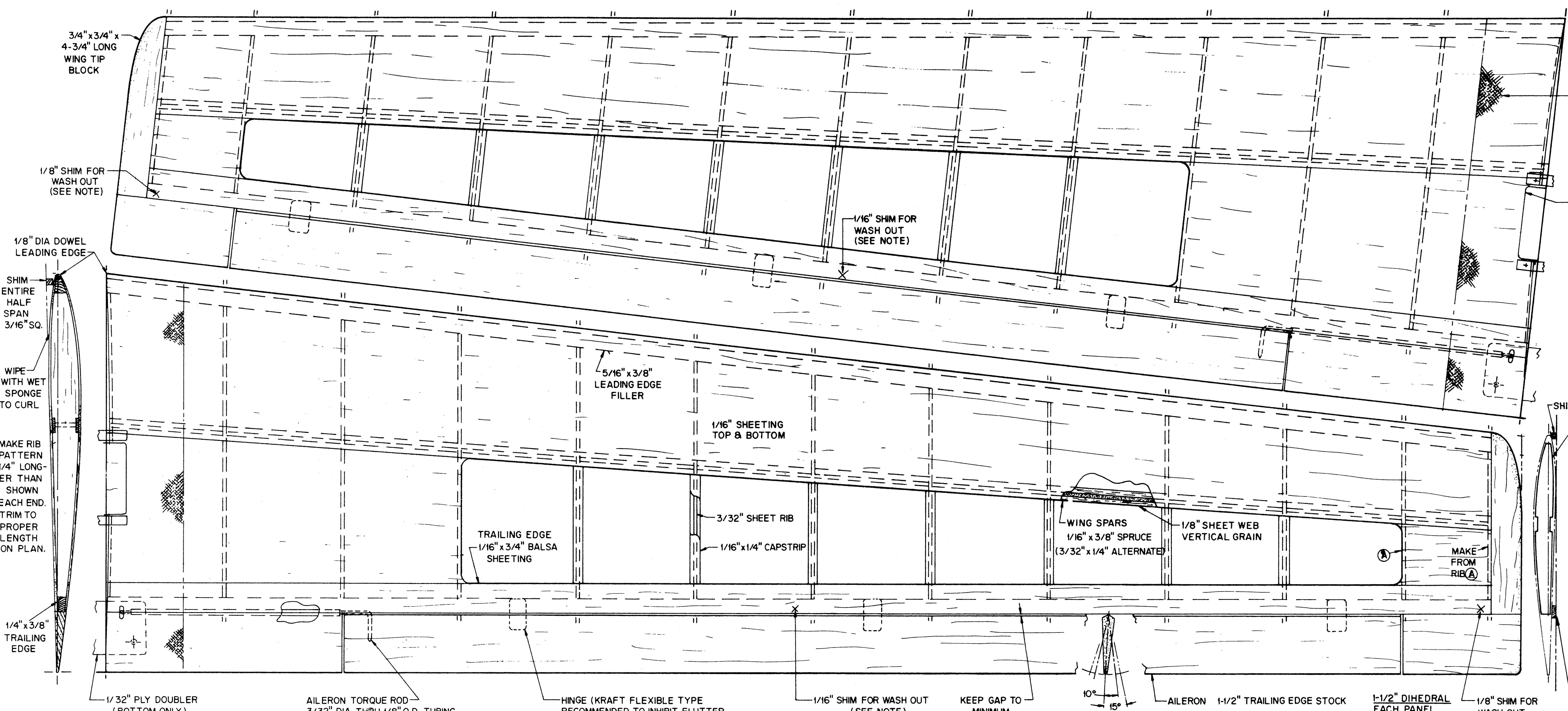


SUGGESTED FINISH: THE PROTOTYPE WAS COVERED AND FINISHED AS FOLLOWS --
WING, STABILIZER & FIN - MONOKOTE
FUSELAGE - FINISH RESIN, TWO COATS PAINTED WITH DOPE. TRIMMED WITH REGULAR MONOKOTE AND D.J. TRIM STRIPE.



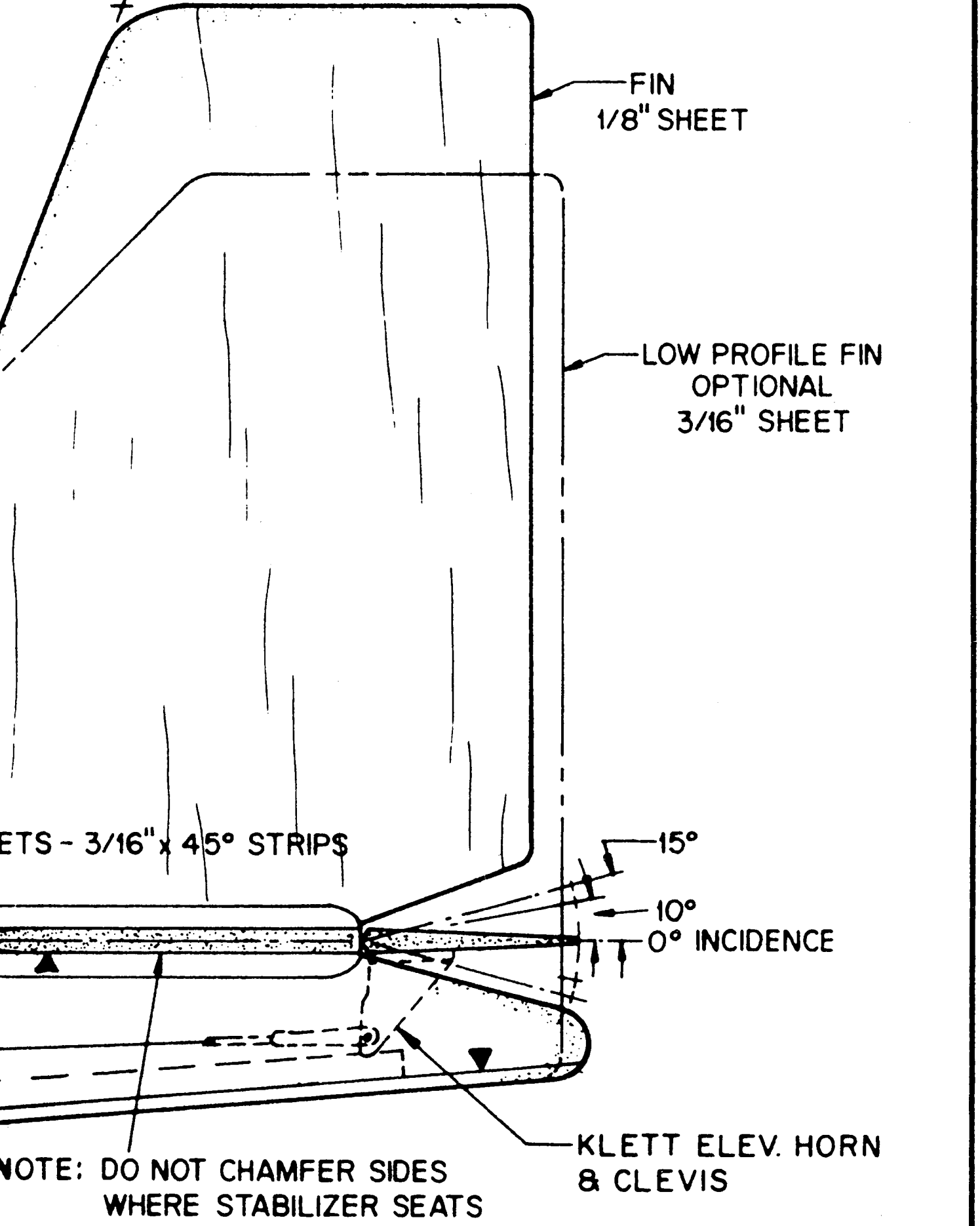
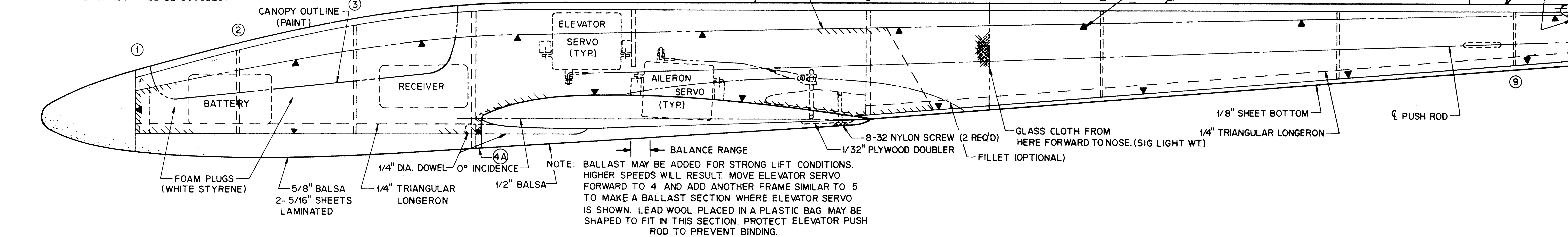
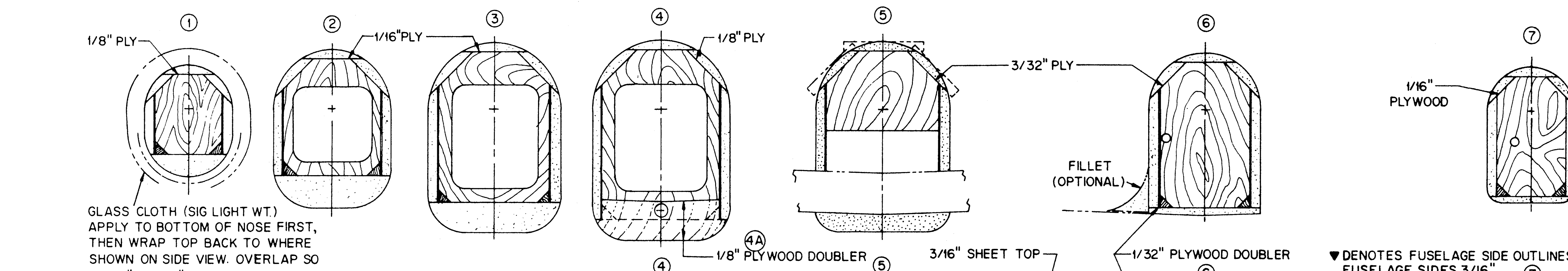
WASH-OUT IS ADDED TO ACHIEVE MORE LIFT EFFICIENCY (OMITTING WASH-OUT WILL NOT EFFECT TIP STALL) BUILD ENTIRE WING PANEL FLAT EXCEPT OMIT TOP LEADING EDGE SHEET, THEN POSITION 1/8\"/>

LEADING EDGE SHIM (3/16\"/>



RIBS ARE MADE BY THE STACK METHOD. MAKE ROOT AND TIP PATTERN RIBS FROM 1/16\"/>

NOTE: ALL FUSELAGE FORMERS SHOWN ARE REAR VIEWS. PLACE PUSH ROD HOLES TO SUIT SERVO ROTATION.



© RCM ALL COMMERCIAL RIGHTS RESERVED

RIDGE RUNNER II

DESIGNED BY DAVE KATAGIRI DRAWN BY DAVE KATAGIRI

PLAN NO. 612