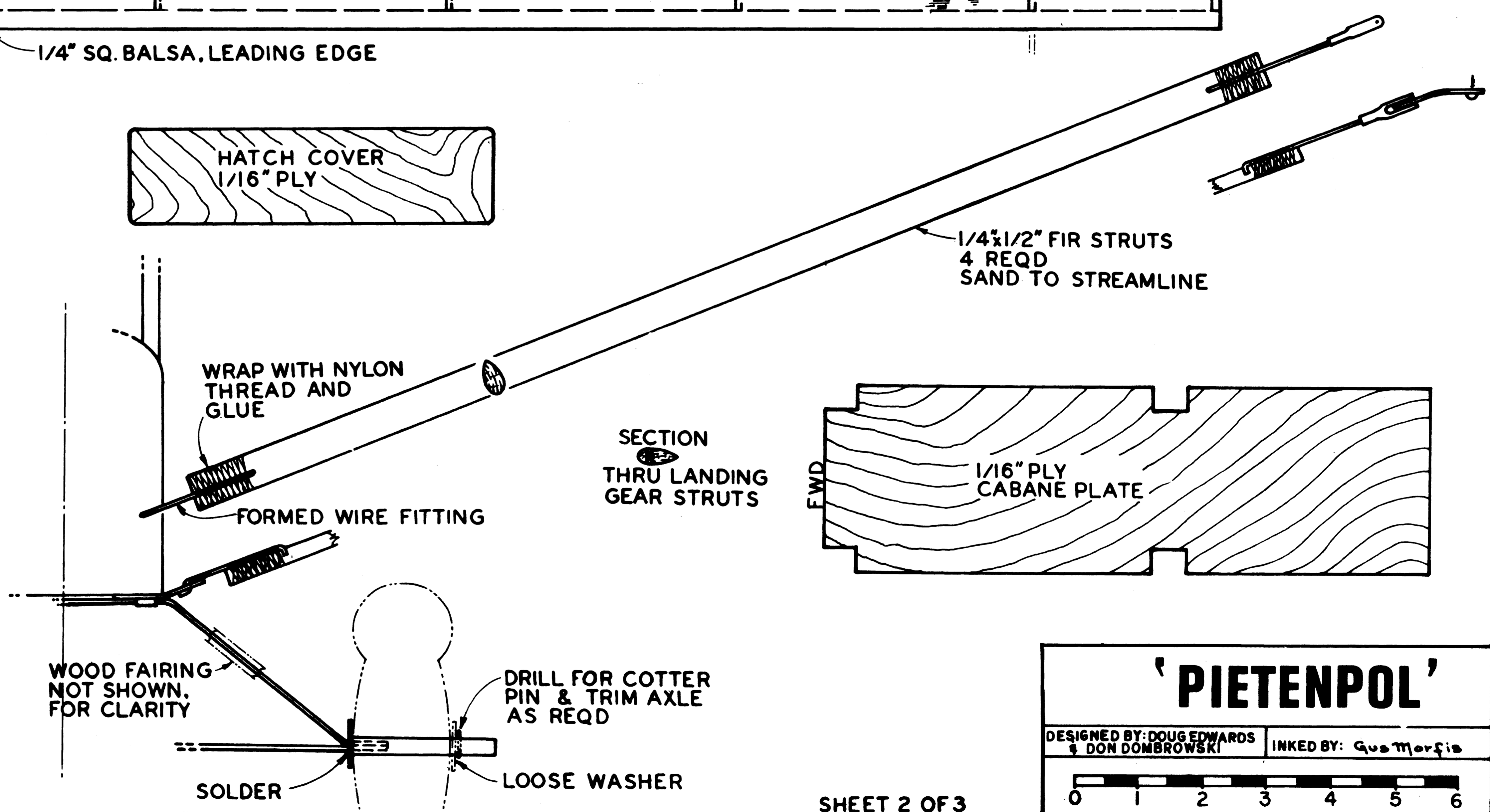
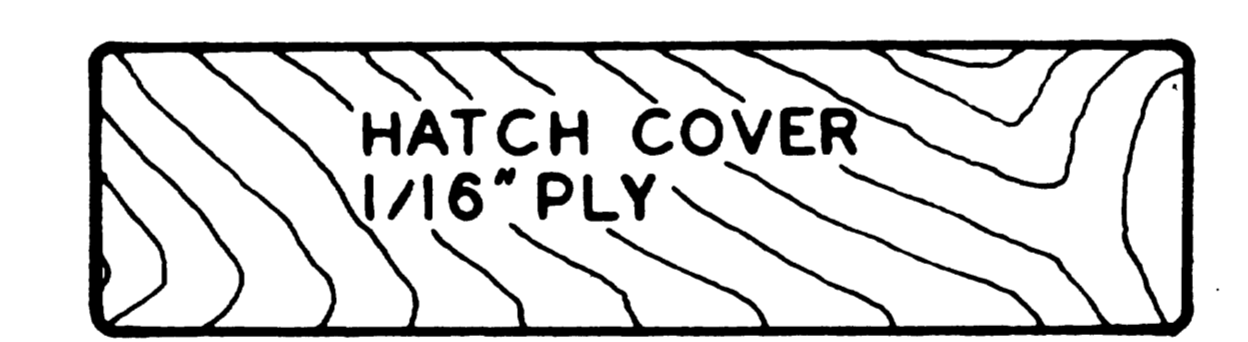


- ③ 1/16" PLY - 2 REQD
- ① 2 REQD - NOTE: SAME AS RIB #3, EXCEPT THAT THE SPAR HOLES ARE LOCATED SLIGHTLY LOWER

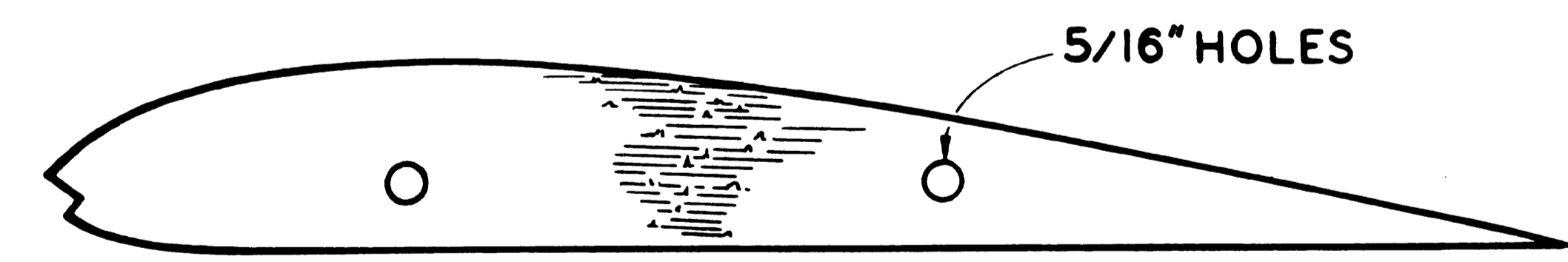
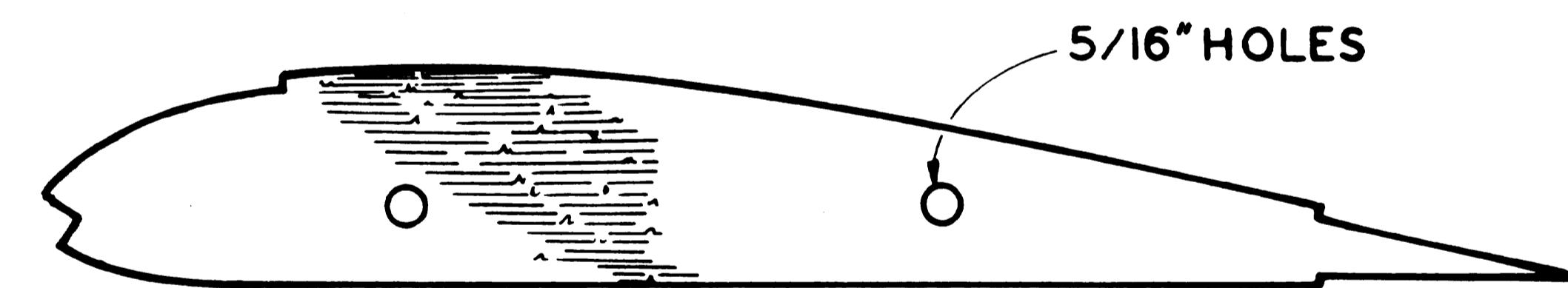
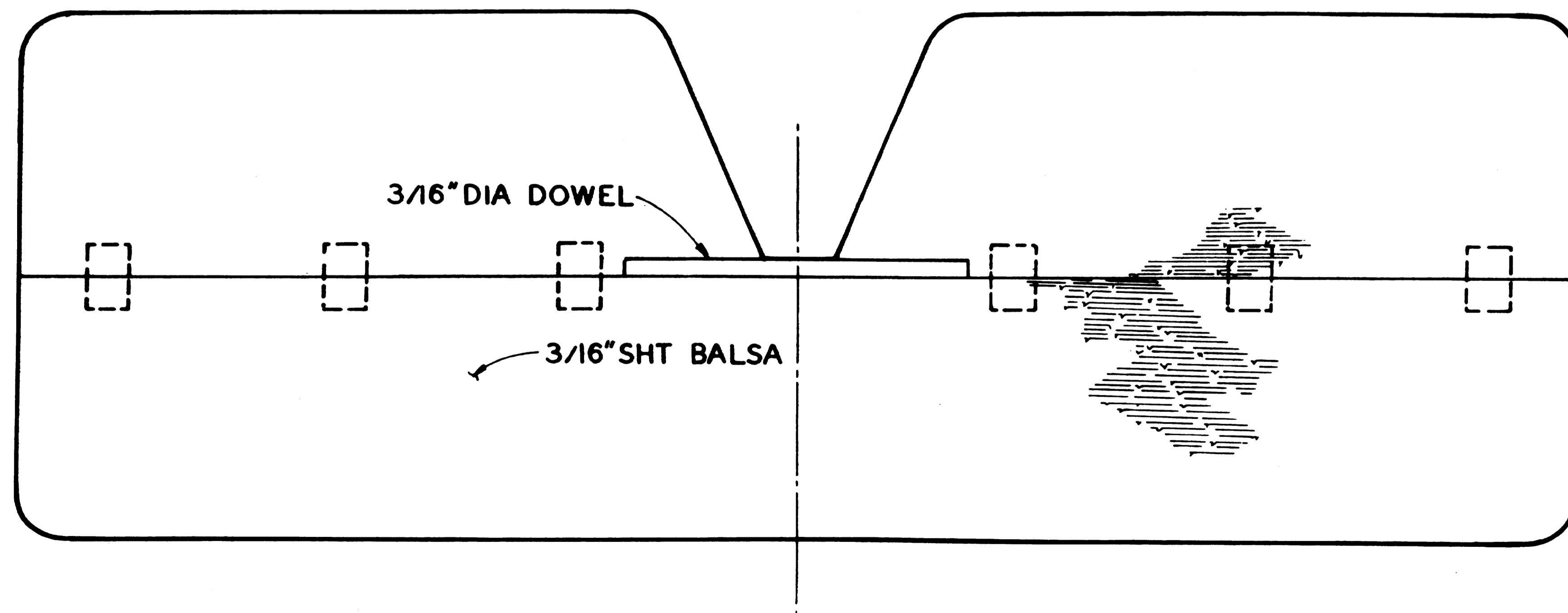
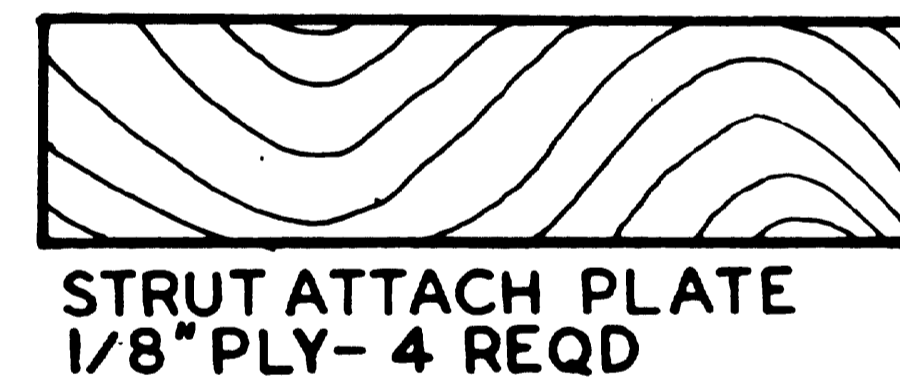
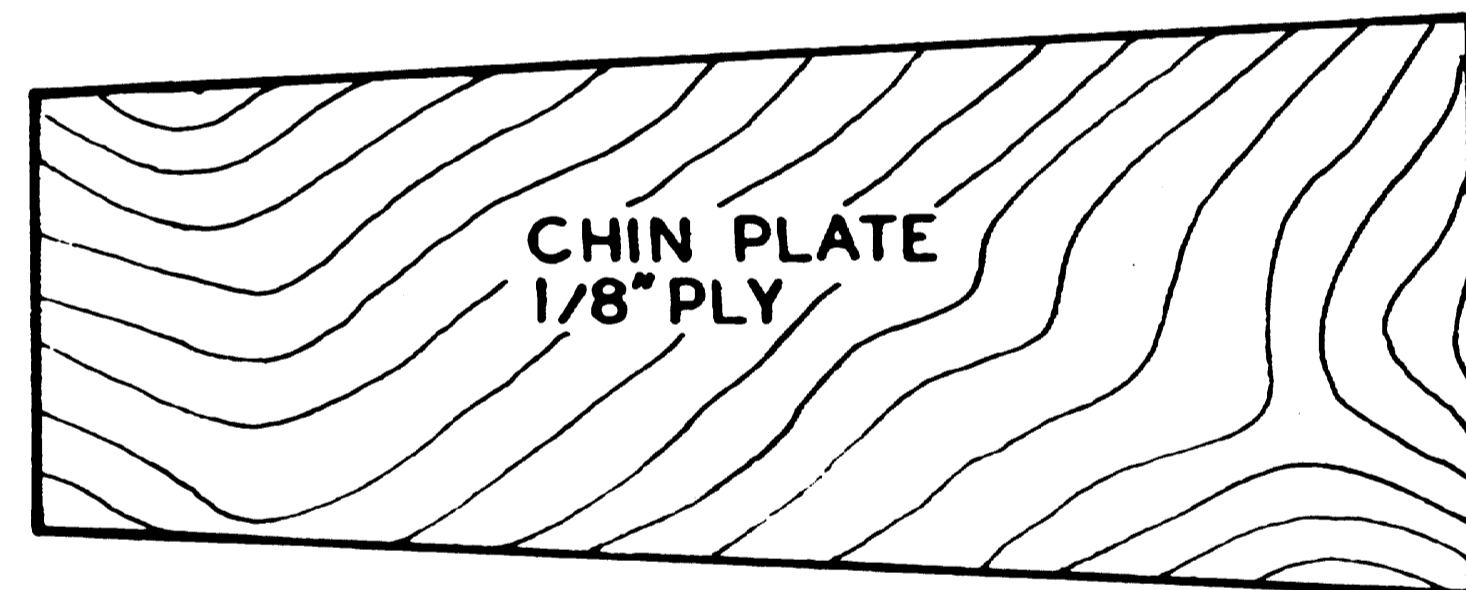
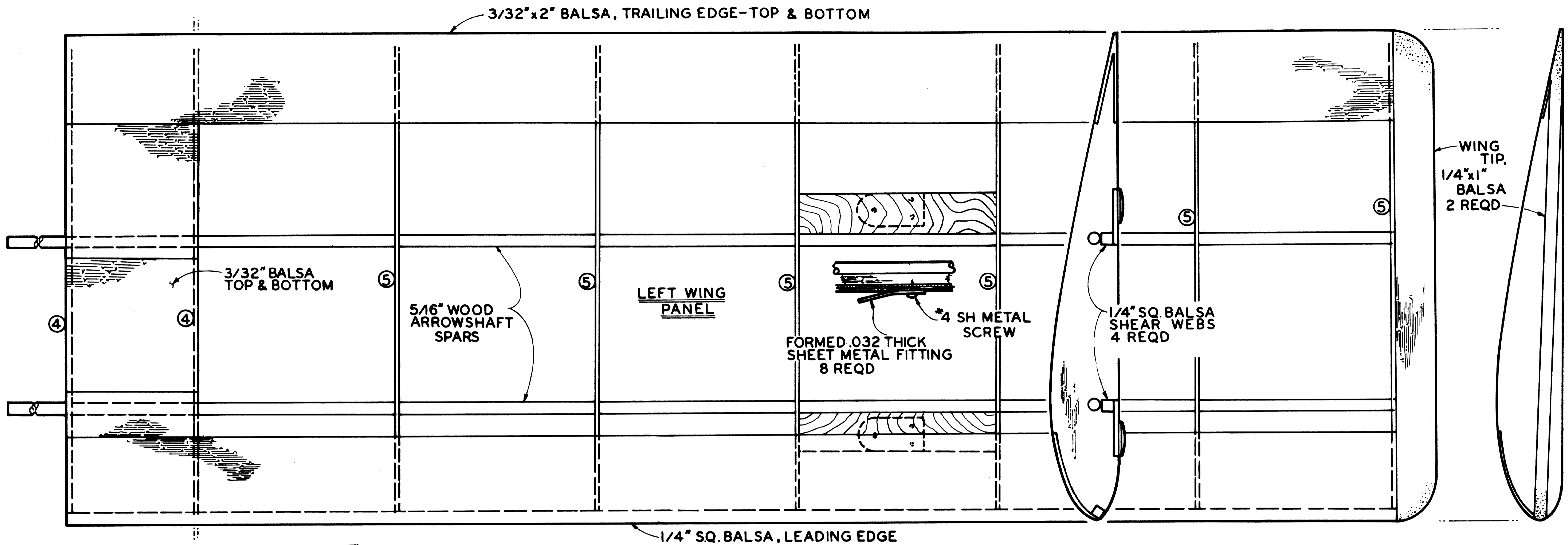


'PIETENPOL'

DESIGNED BY: DOUG EDWARDS & DON DOMBROWSKI

INKED BY: G. M. J. P.

SHEET 2 OF 3



'PIETENPOL'

DESIGNED BY: DOUG EDWARDS & DON DOMBROWSKI

INKED BY: Gus Morfis

0 1 2 3 4 5 6