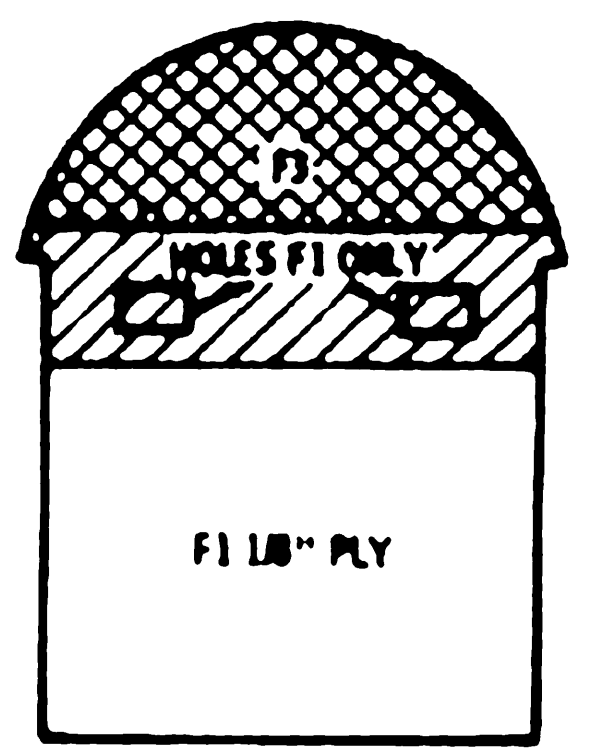
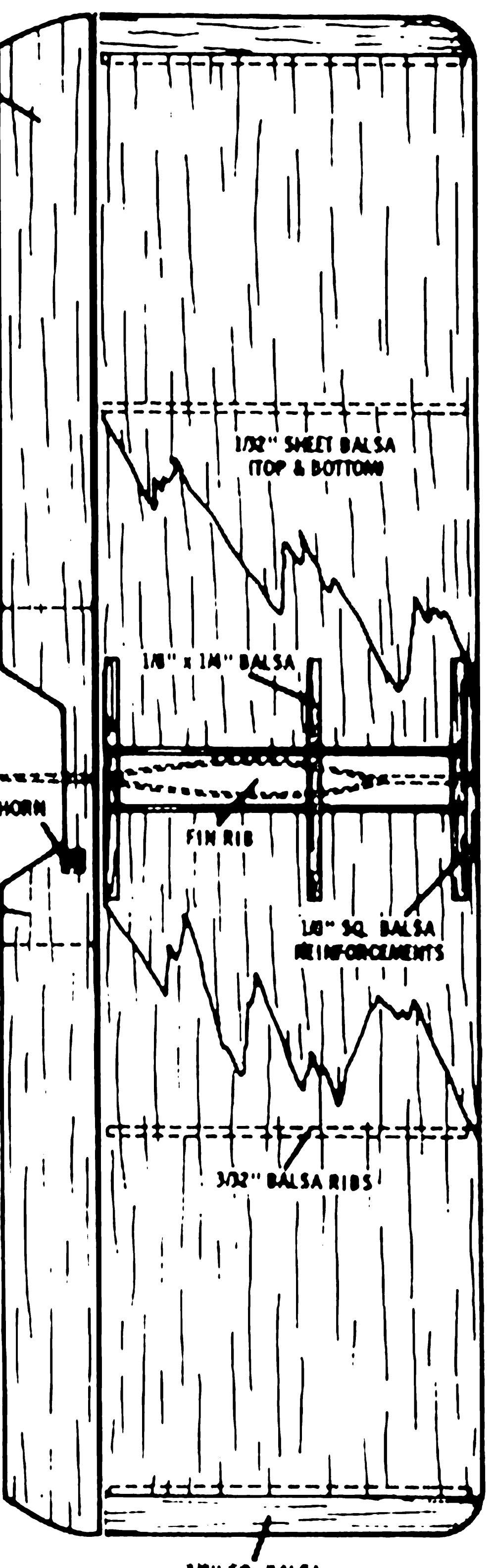
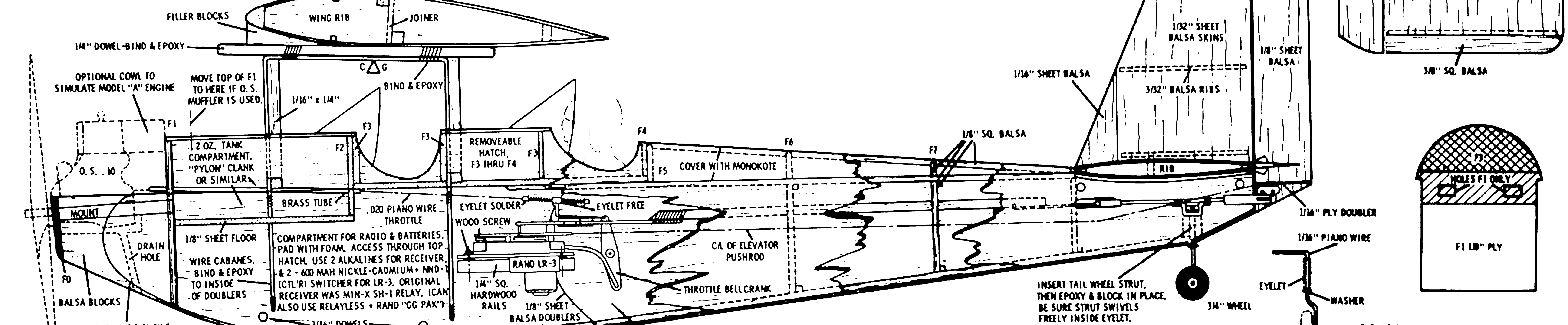
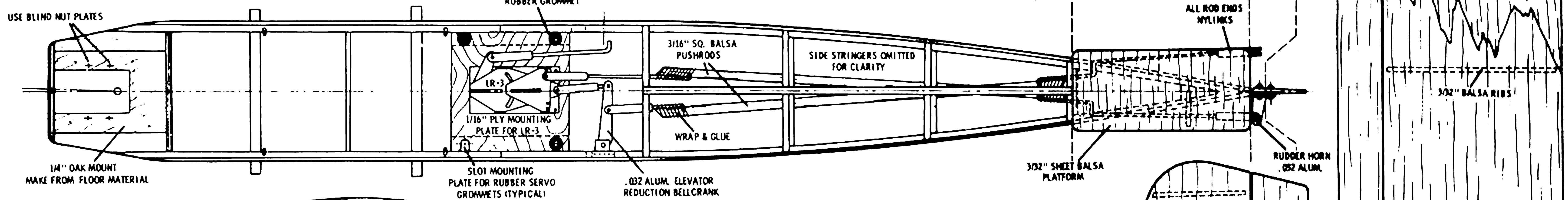
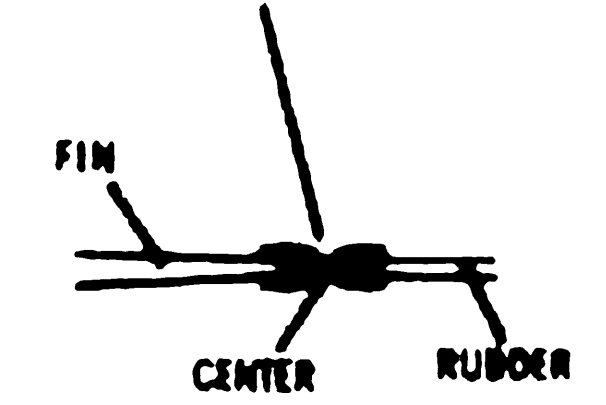
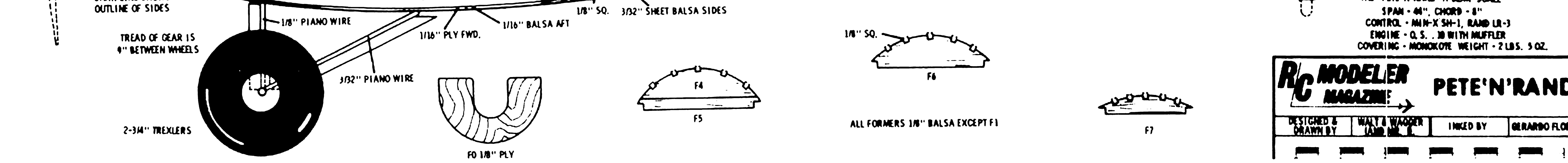


TO CONSTRUCT FIN & STAB  
 PLACE BOTTOM SKIN ON BENCH,  
 WITH 1/8" SQ. STRIPS UNDER  
 LEADING & TRAILING EDGES.  
 GLUE & PIN RIBS & REINFORCEMENTS  
 IN PLACE.  
 BEVEL SKIN EDGES, THEN APPLY  
 TOP SKIN. ADD TIPS,  
 SAND & COVER WITH MONOKOTE.  
 FOR HINGES, HEAT-BOND TWO  
 1/2" STRIPS OF MONOKOTE  
 AT CENTER, THEN BOND TO  
 SURFACES AS SHOWN BELOW.



THE "PETE-N-RAND" A SEMI-SCALE  
 SPAN - 44", CHORD - 8"  
 CONTROL - MIN-X SH-1, RAND LR-3  
 ENGINE - O.S. 10 WITH MUFFLER  
 COVERING - MONOKOTE WEIGHT - 2 LBS. 5 OZ.



**RC MODELER**  
**MAGAZINE**

**PETE'N'RAND**

DESIGNED & DRAWN BY: WALT WAGNER  
 LINKED BY: GERARDO FLORES