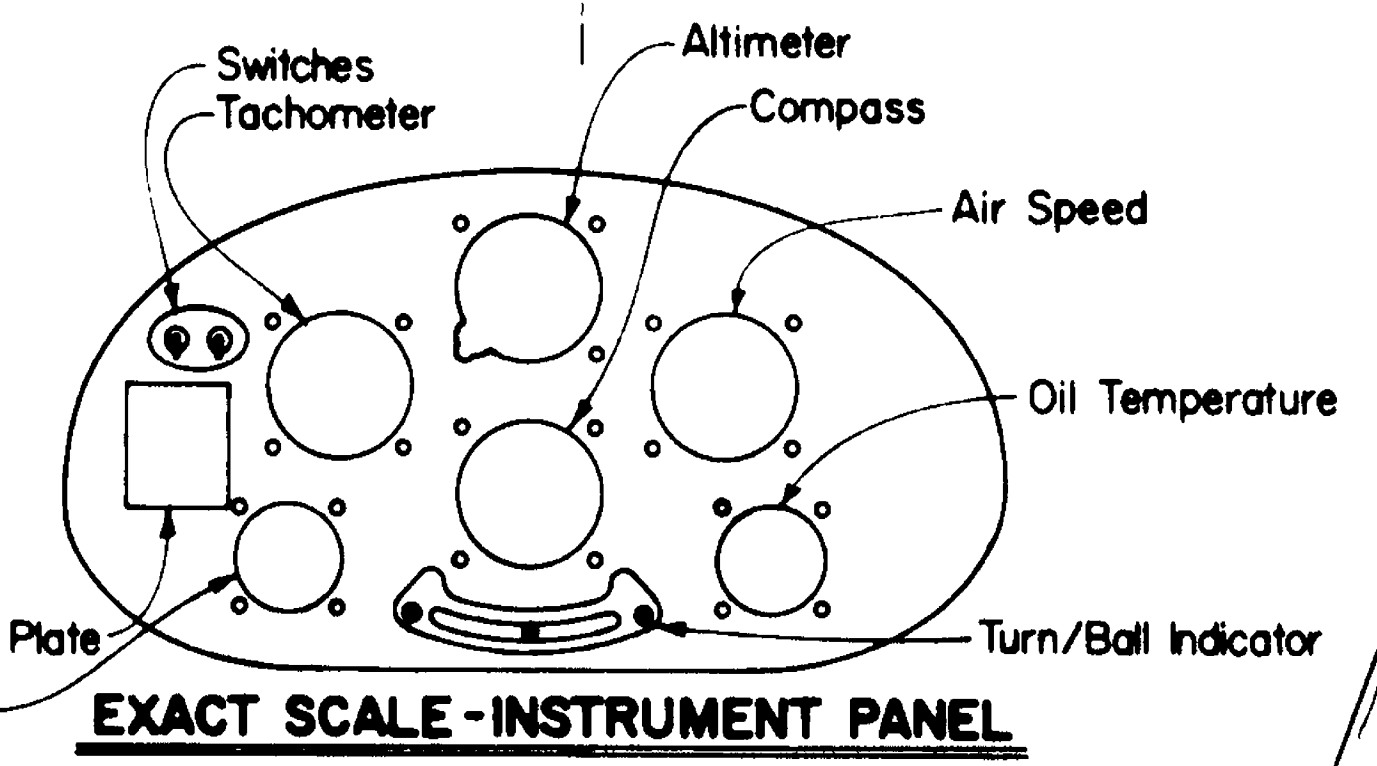


CONTROL DEFLECTION
(A DUAL RATE XMITTER WAS USED)

	RATES HI	LOW
RUDDER	3/4	3/8
ELEVATOR	UP 1/2	1/4
	DN 1/2	1/4
AILERON	UP 9/16	5/16
	DN 5/16	3/16
FLAP	DN 5/8	

MEASUREMENTS TAKEN FROM CENTER OF T.E. RADII AND SPECIFIED IN INCHES.



CONTROL DEFLECTION

LEAVE 1/32" EXCESS-EACH END TRIM FLUSH AFTER ASSEMBLY

MAIN LANDING GEAR LEG-OUTLINE

- NOTES**
- 1 ALL WOOD IS BALSA, UNLESS NOTED OTHERWISE
 - 2 THE FUSELAGE BELLY PAN AND WING, ARE BOTH HELD IN PLACE, WITH THE SAME 1/4-20 NYLON BOLTS
 3. PARTIAL KIT AVAILABLE FROM P & W MODEL SERV. 1114-B E. EDNA PLACE, COVINA, CALIF. 91724. SEE LIST BELOW.

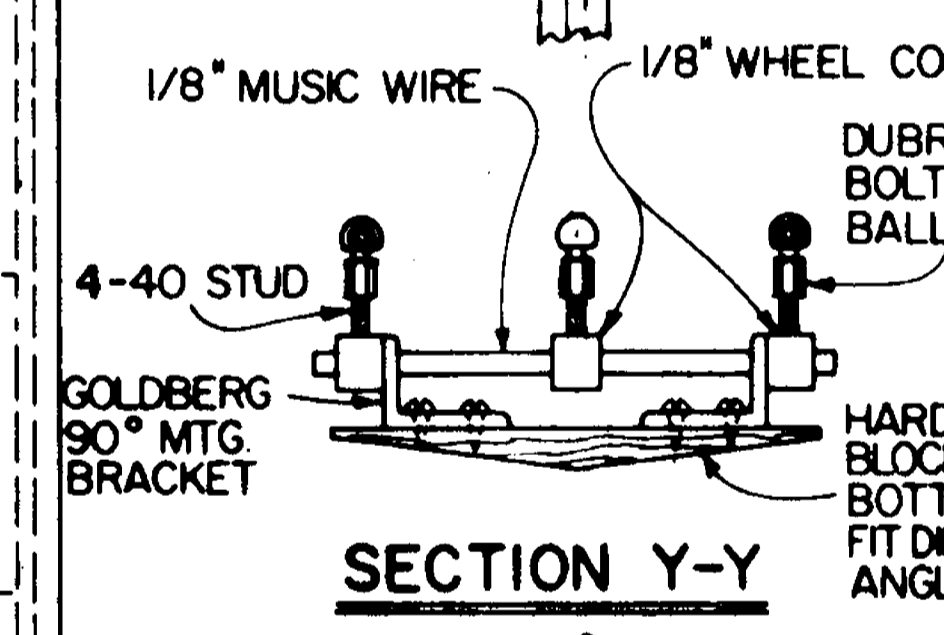
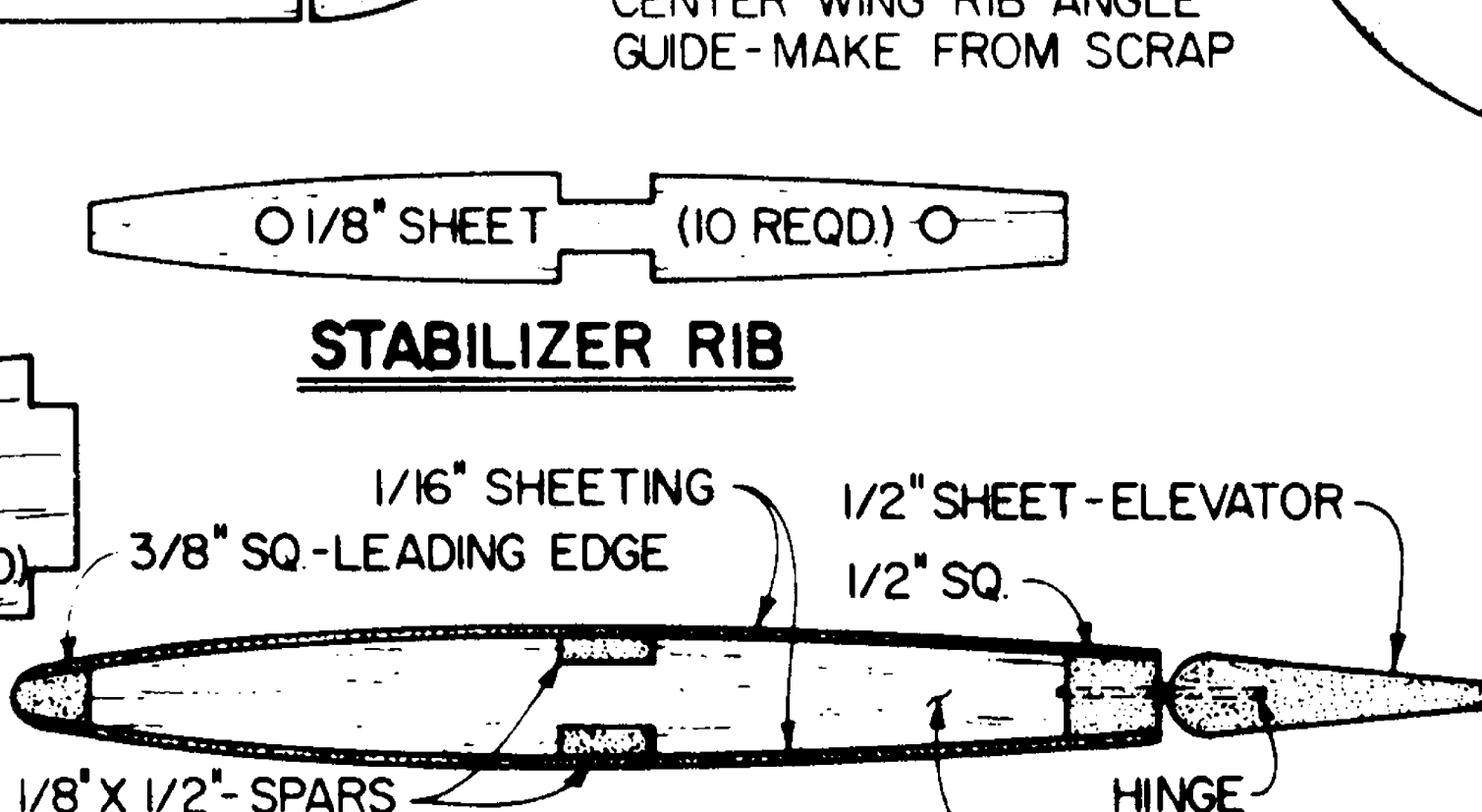
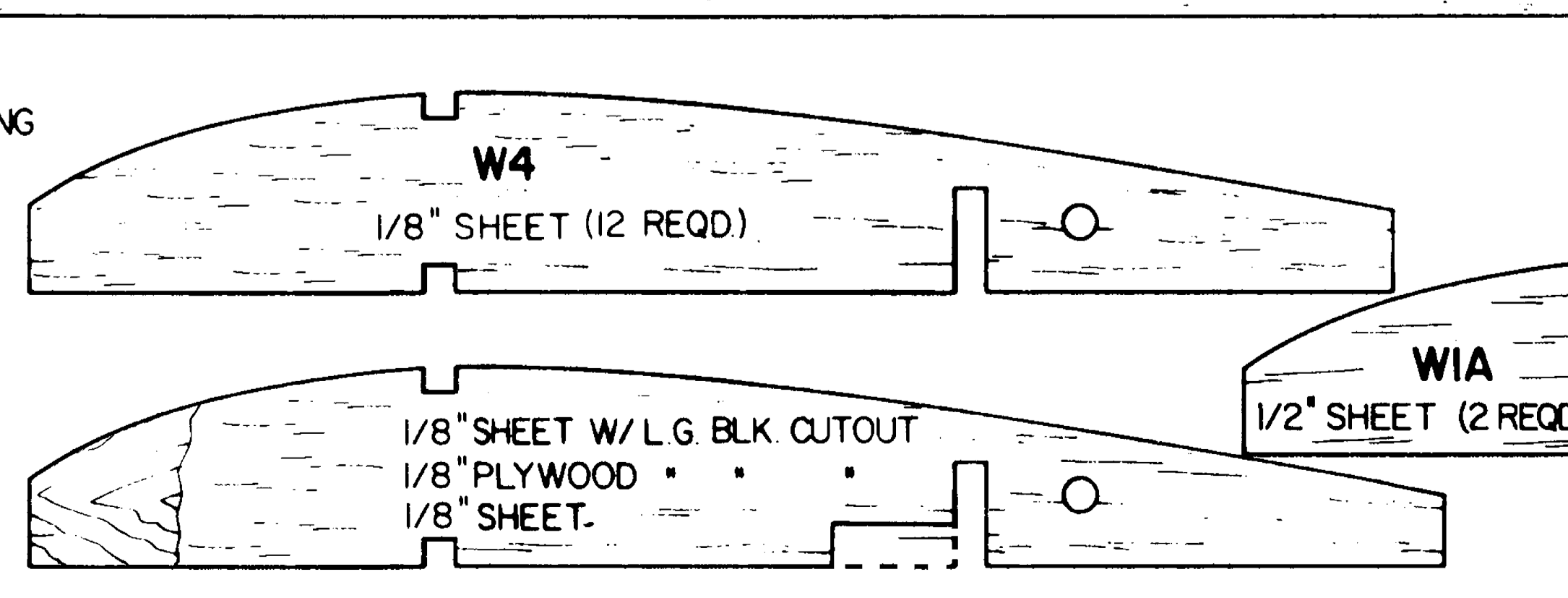
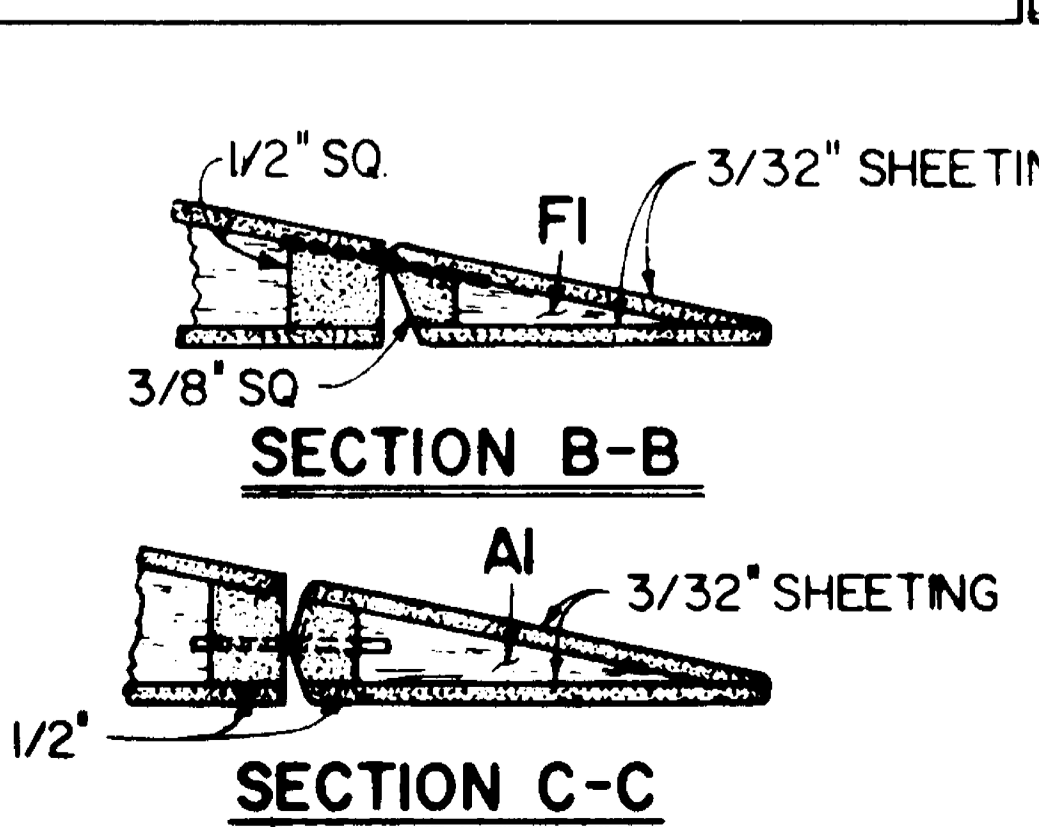
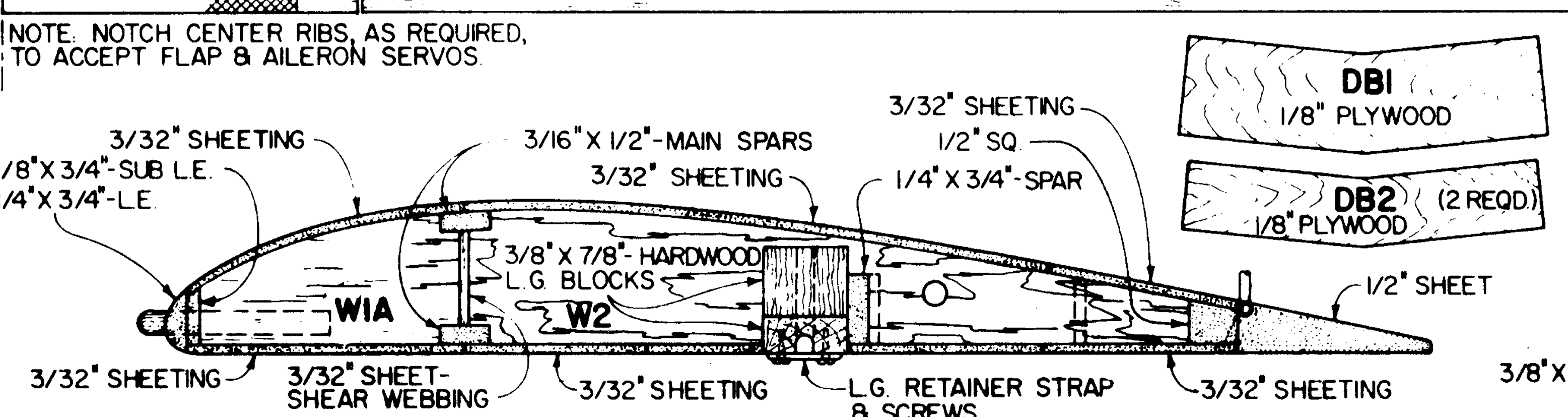
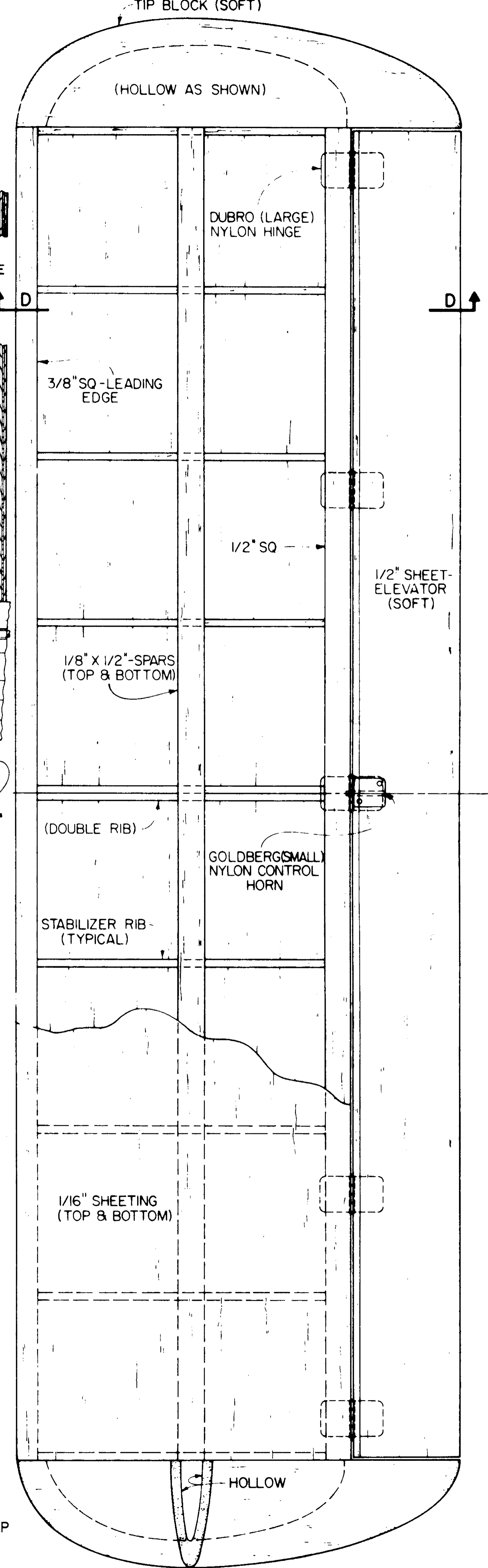
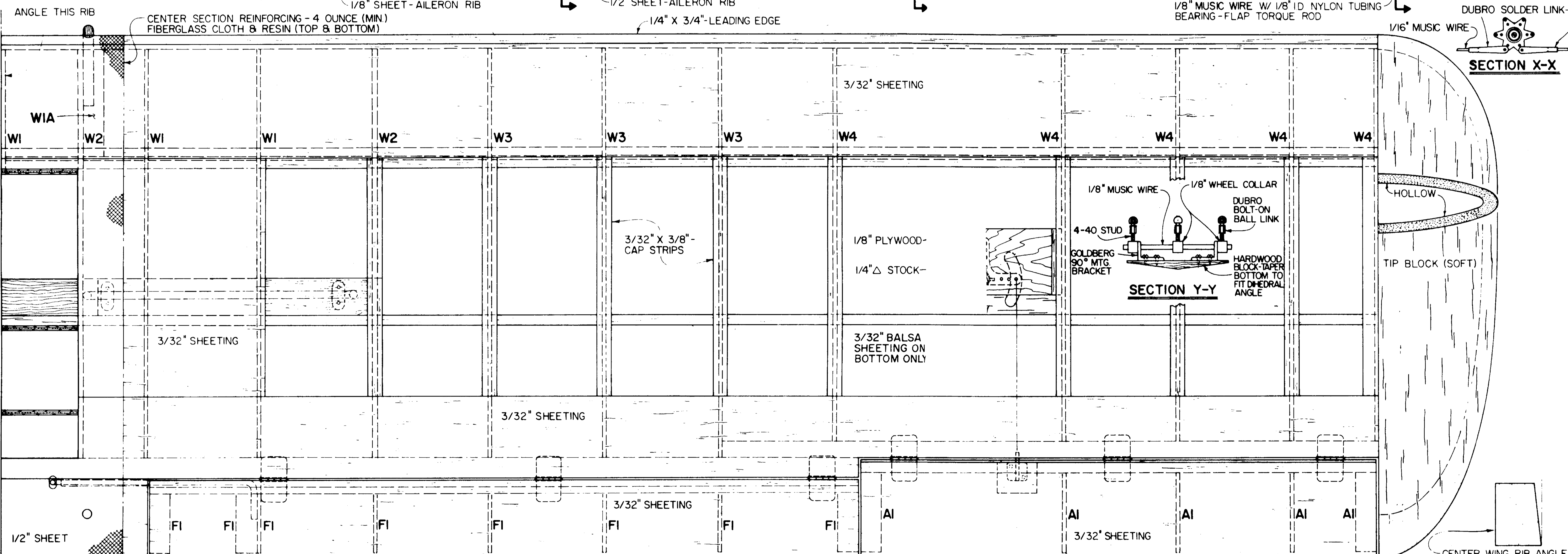
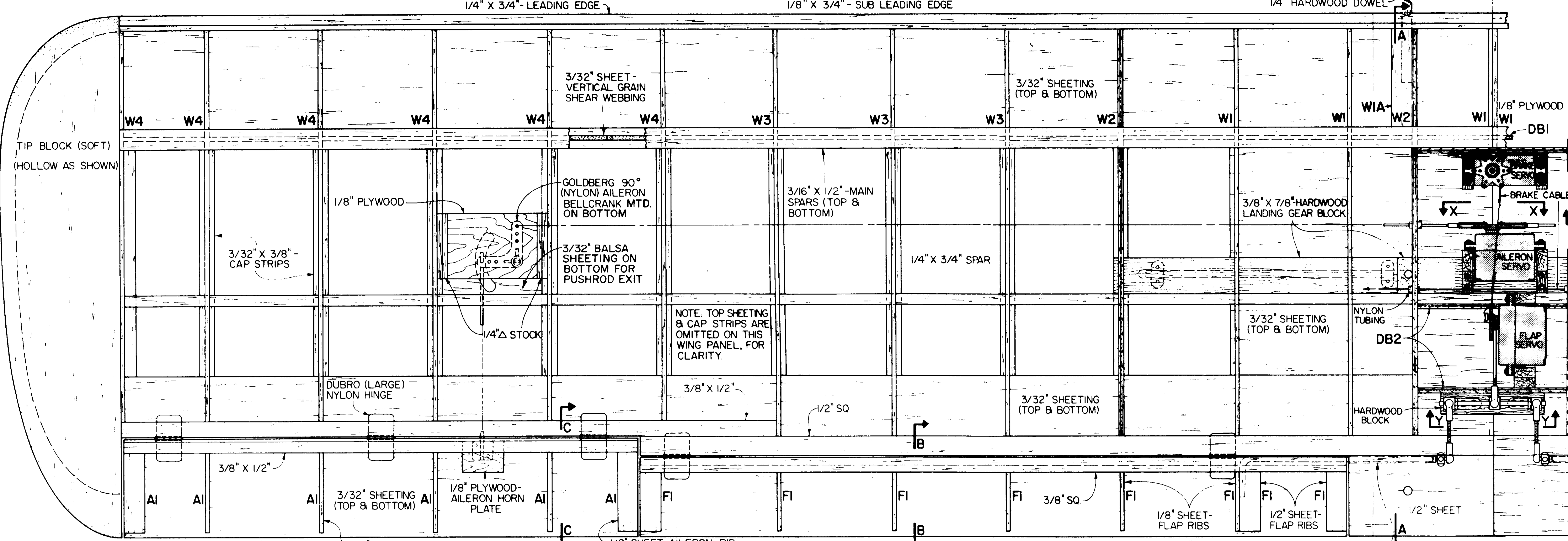
RCM ALL COMMERCIAL RIGHTS RESERVED

LOCKHEED
LITTLE DIPPER
Model 33
Vega V-304
A 1/4 SCALE SPORT DESIGN

DESIGNED & DRAWN BY
DICK TICHENOR

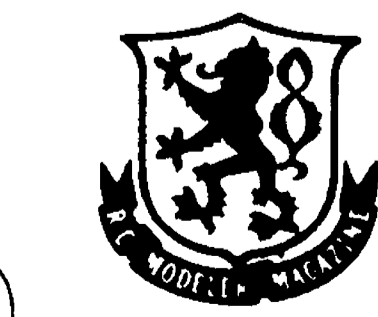
PLANS BY
Bob Wallace

PARTIAL KIT CONTAINS FIBERGLASS COWL & HEADREST, BUTYRATE CANOPY, 3/16" MAIN L/G, FUSELAGE FORMERS (INC. FBI & 2) & WING, STAB & FIN RIBS. \$56.00 P.P. CONT. USA. ALLOW 4-6 WEEKS DEL.



NOTE: NOTCH CENTER RIBS, AS REQUIRED, TO ACCEPT FLAP & AILERON SERVOS.

NOTE: PLYWOOD WING BRACES (WBI & WB2), PRODUCE CORRECT DIHEDRAL ANGLE (6°-EACH WING).



© RCM ALL COMMERCIAL RIGHTS RESERVED
LOCKHEED
LITTLE DIPPER
 Model 33 Vega V-304
 A 1/4 SCALE SPORT DESIGN
 DESIGNED & DRAWN BY DICK TICHENOR
 PLANS BY Bob Ventura

