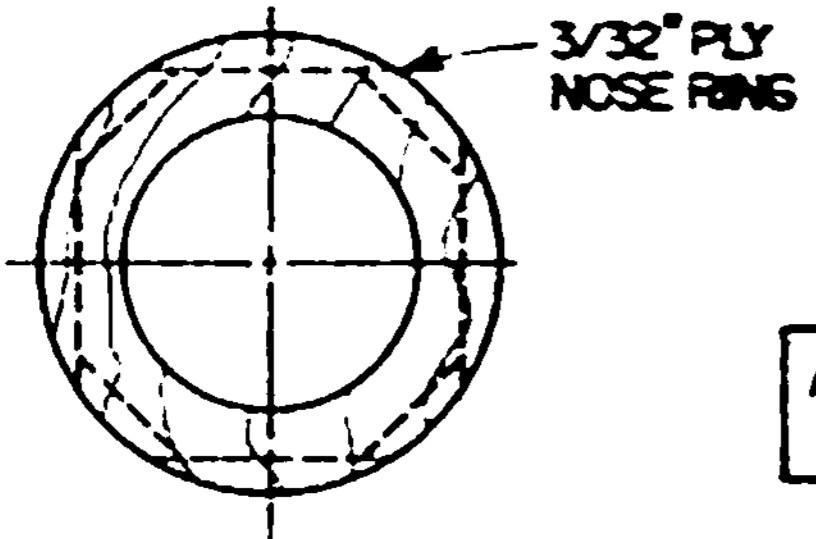
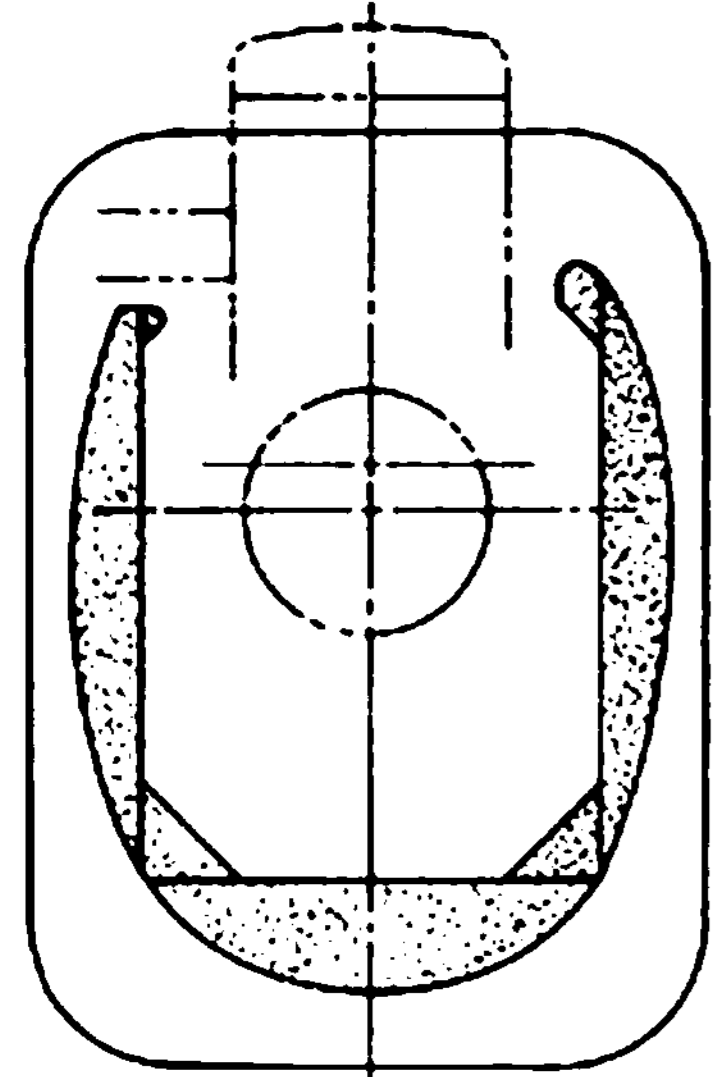
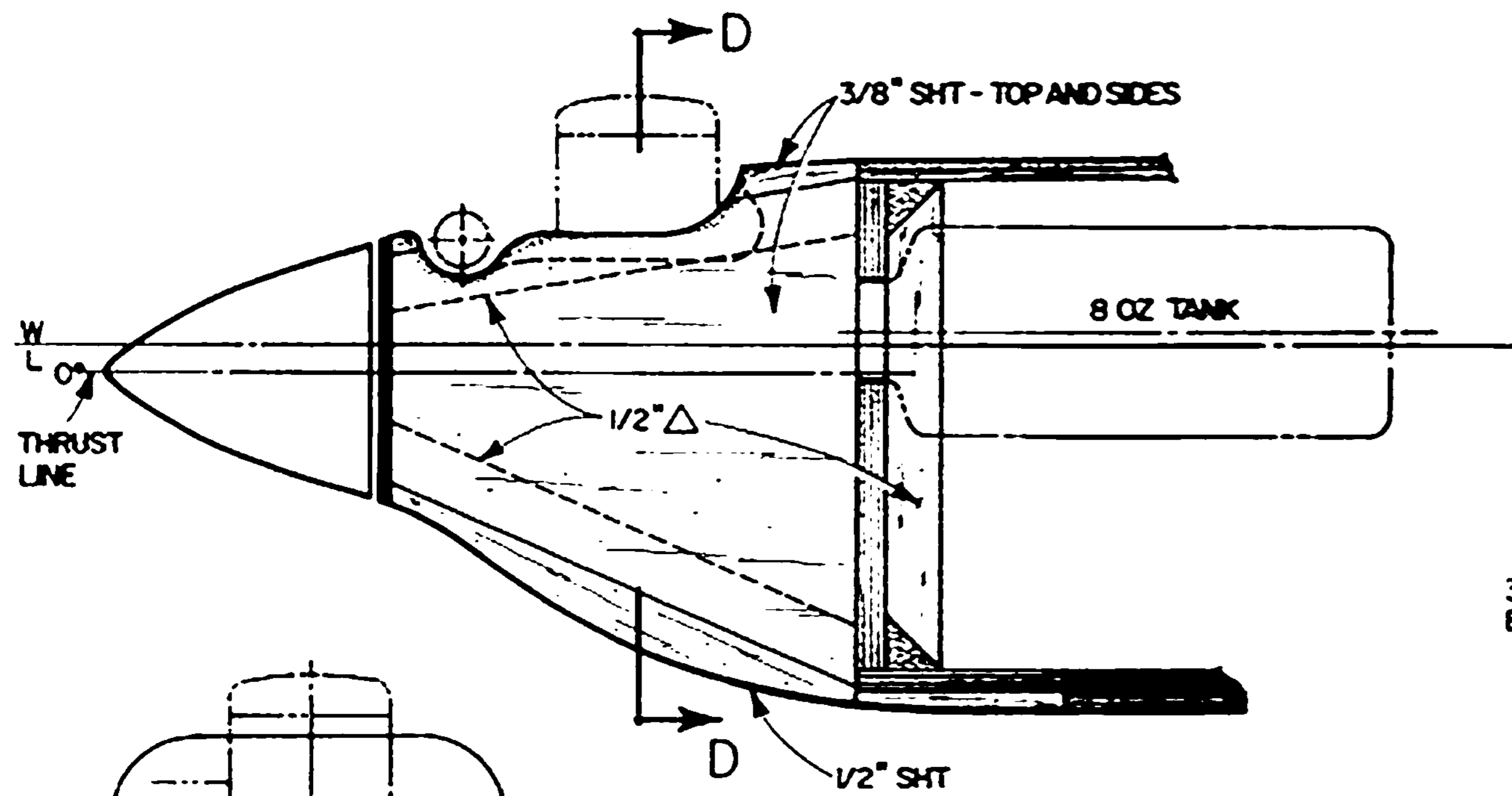


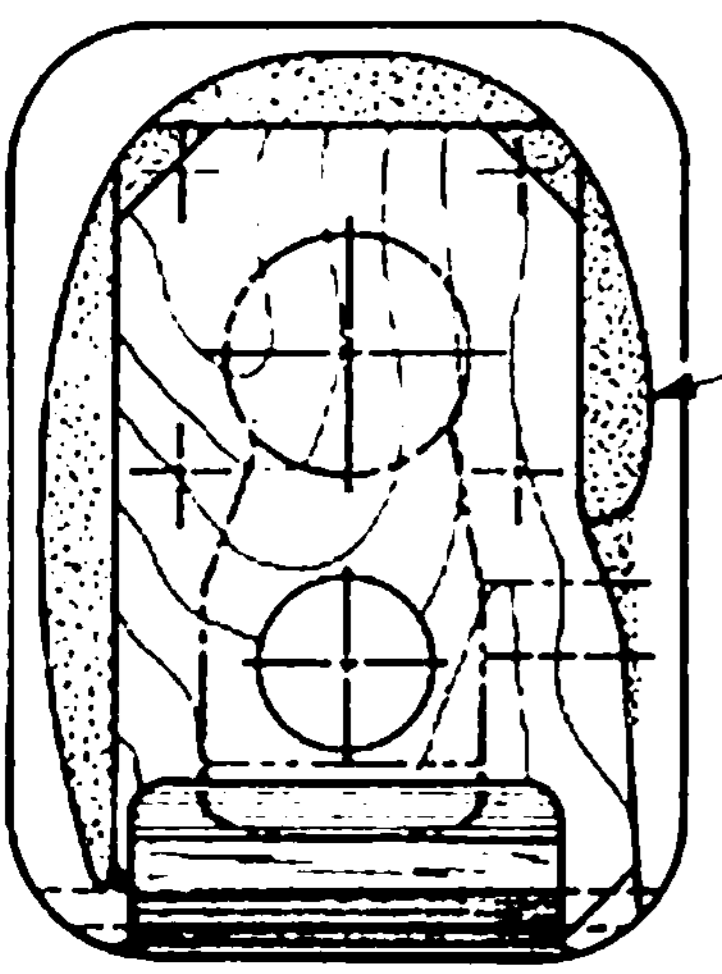
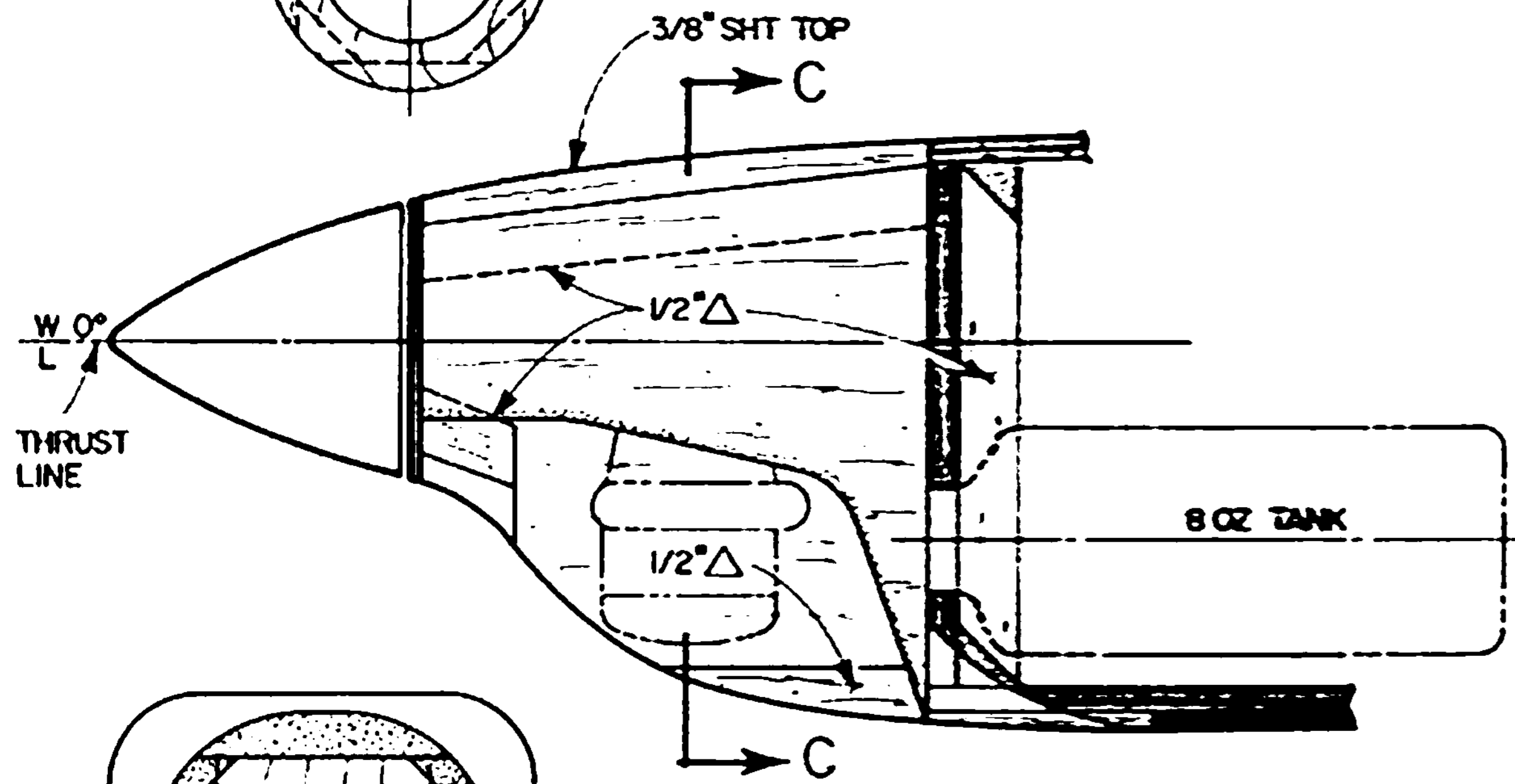
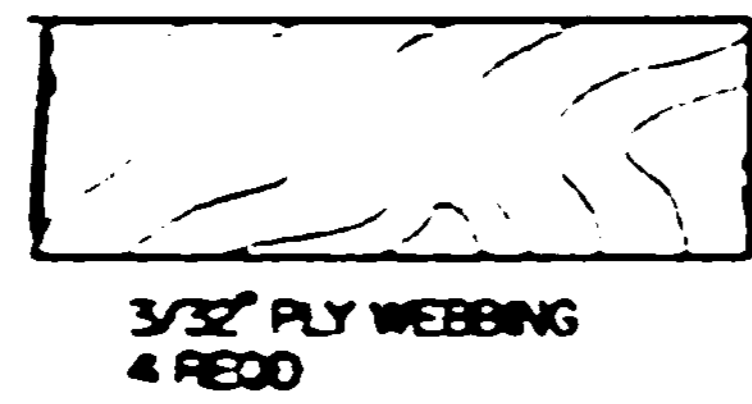
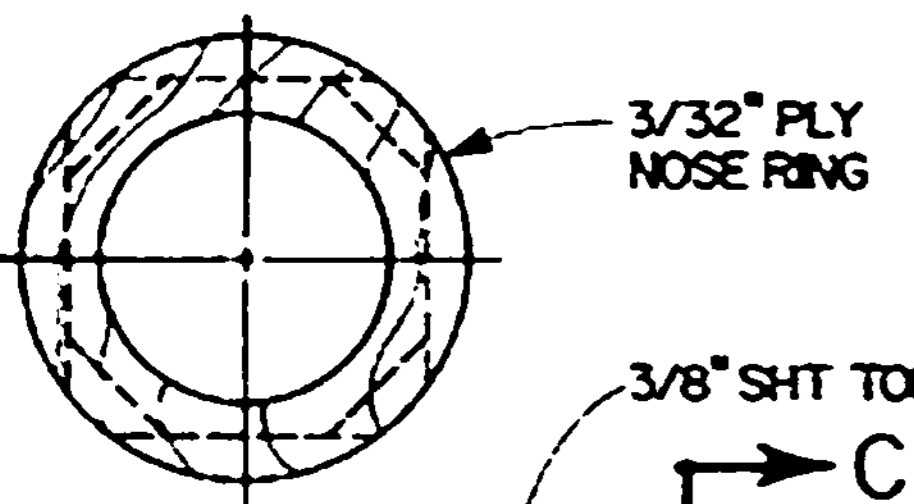
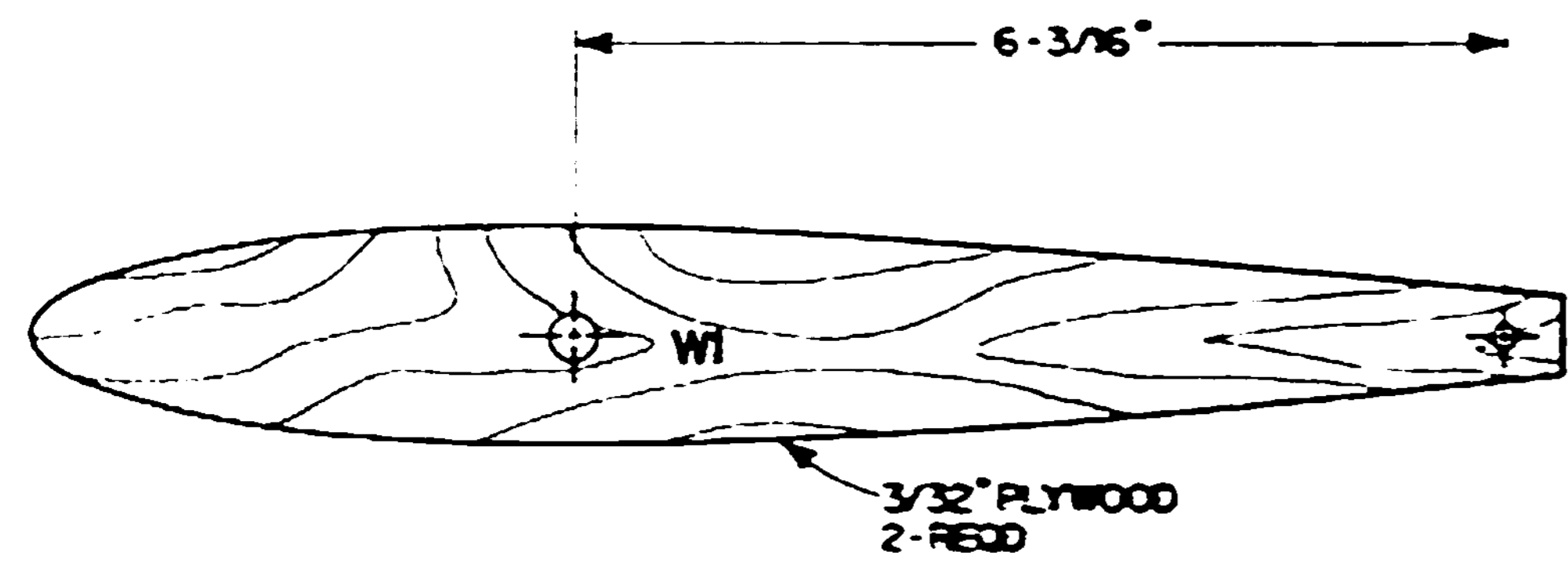
DESIGN SUMMARY
 WING SPAN - 60"
 LENGTH - 40"
 HEIGHT - 11 3/4"
 MEAN WING CHORD - 10"
 WING AREA - 596 SQ IN (4.14 SQ FT)
 GROSS WEIGHT - 88 OZ (5.6 LBS) (8 OZ FUEL)
 WING LOADING - 21 OZ/SQ FT
 POWER LOADING - 6.0 LBS/HP
 LOAD FACTOR > ±15 G'S
 C.G. LOCATION - 26 TO 29% OF CHORD
 CONTROL DEFLECTION:
 ELE. ± 1/4"
 AIL. ± 5/16"
 RUD. ± 5/8"
 (XX) DENOTES BALSA DENSITY IN OZ/IN³
 ALL WOOD IS BALSA UNLESS OTHERWISE SPECIFIED.

© 1988 ALL COMMERCIAL RIGHTS RESERVED SHEET 1 OF 2

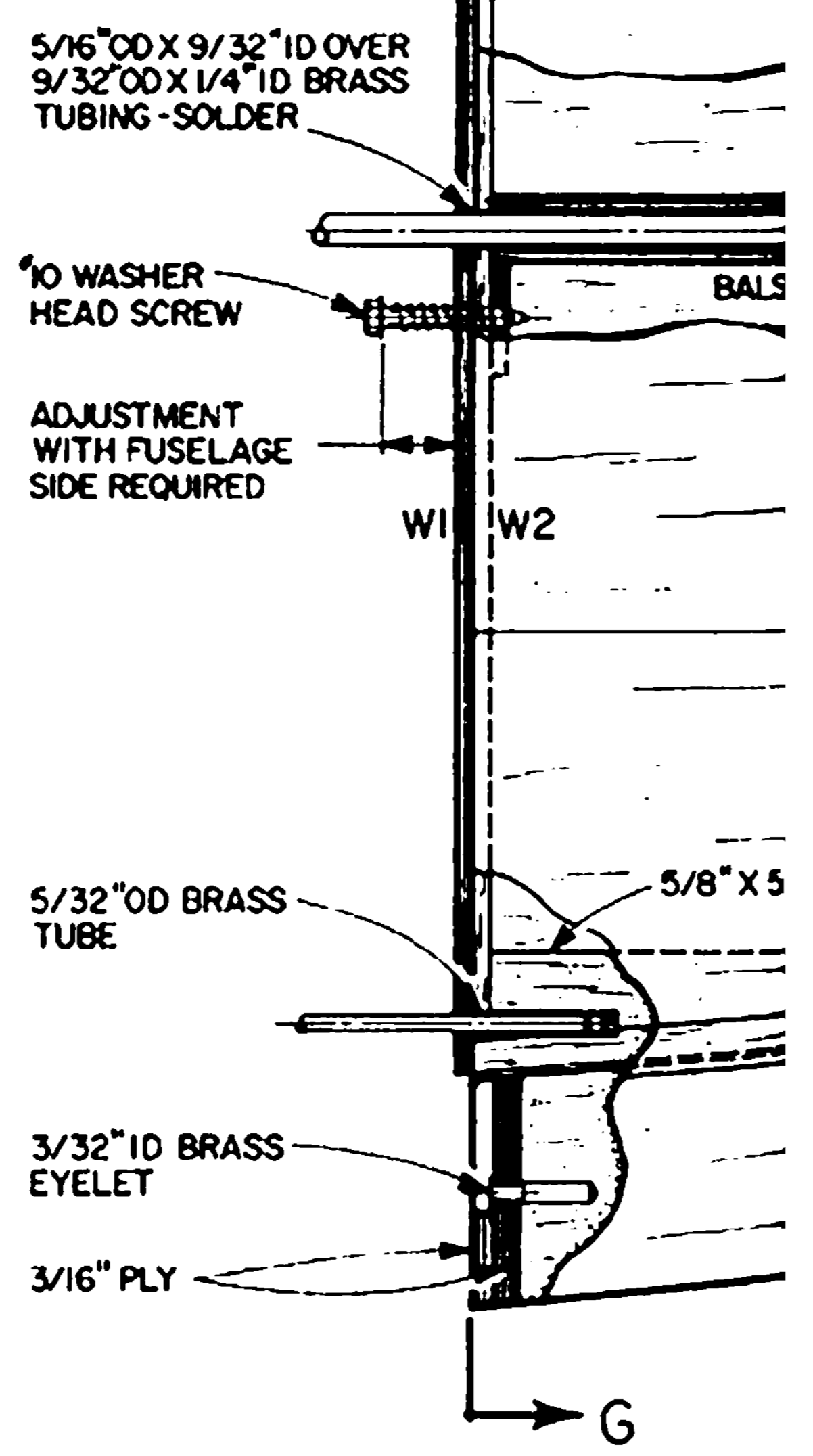
DESIGNED BY JOE MERGEN PLANS BY JERRY SMITH



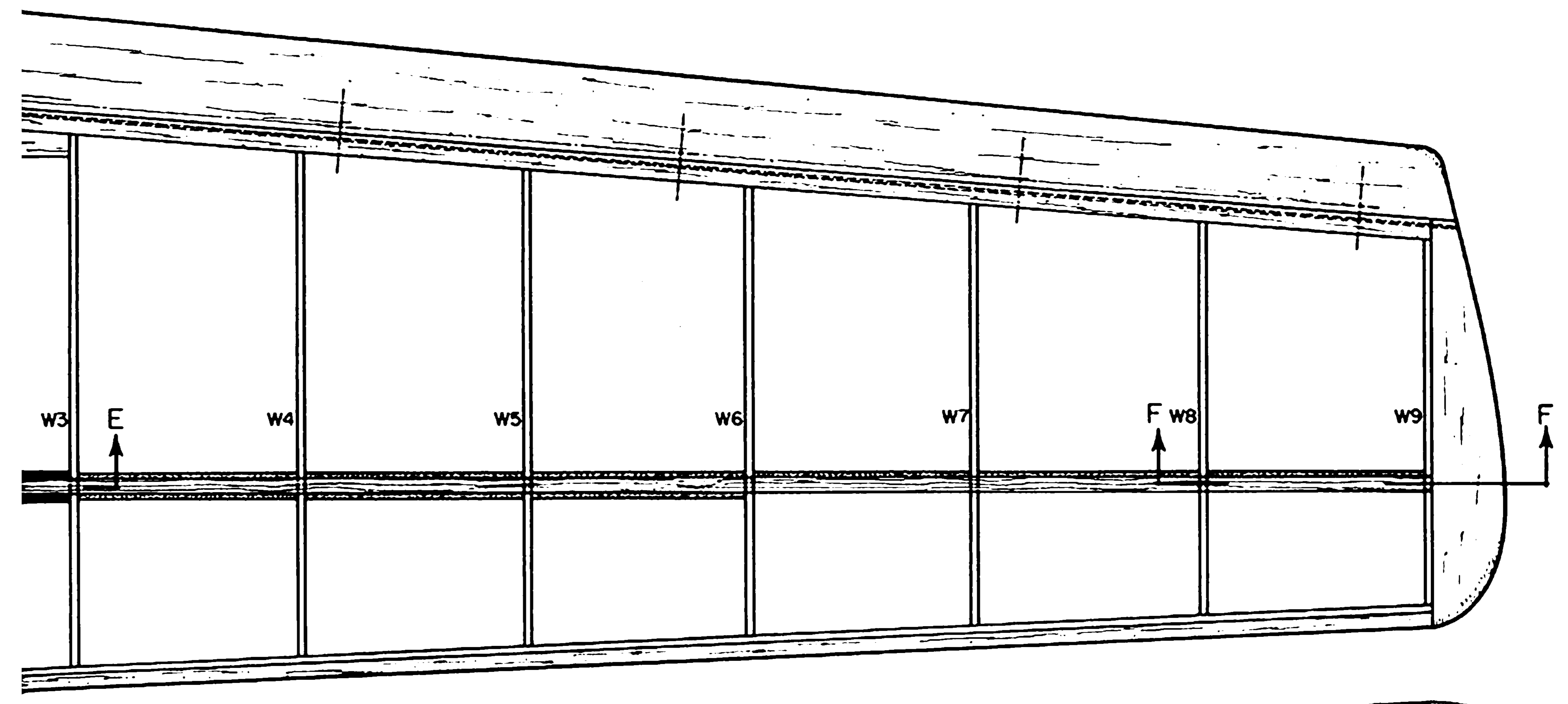
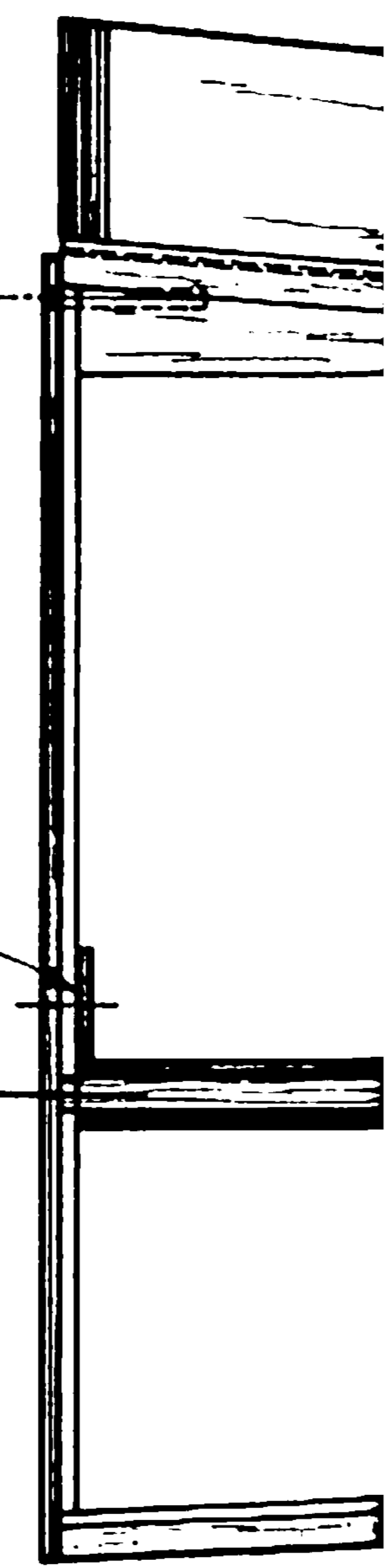
ALTERNATE NOSE NO. 2
FUN FLYER



ALTERNATE NOSE NO. 1
FUN FLYER

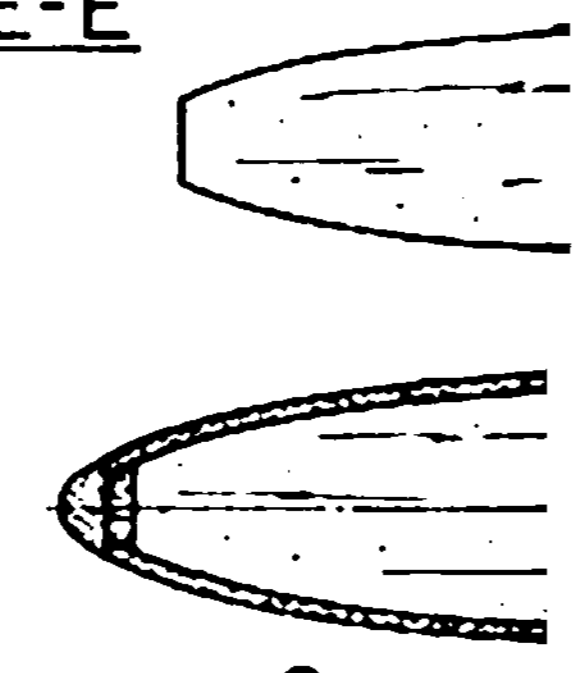


SECTION E-E



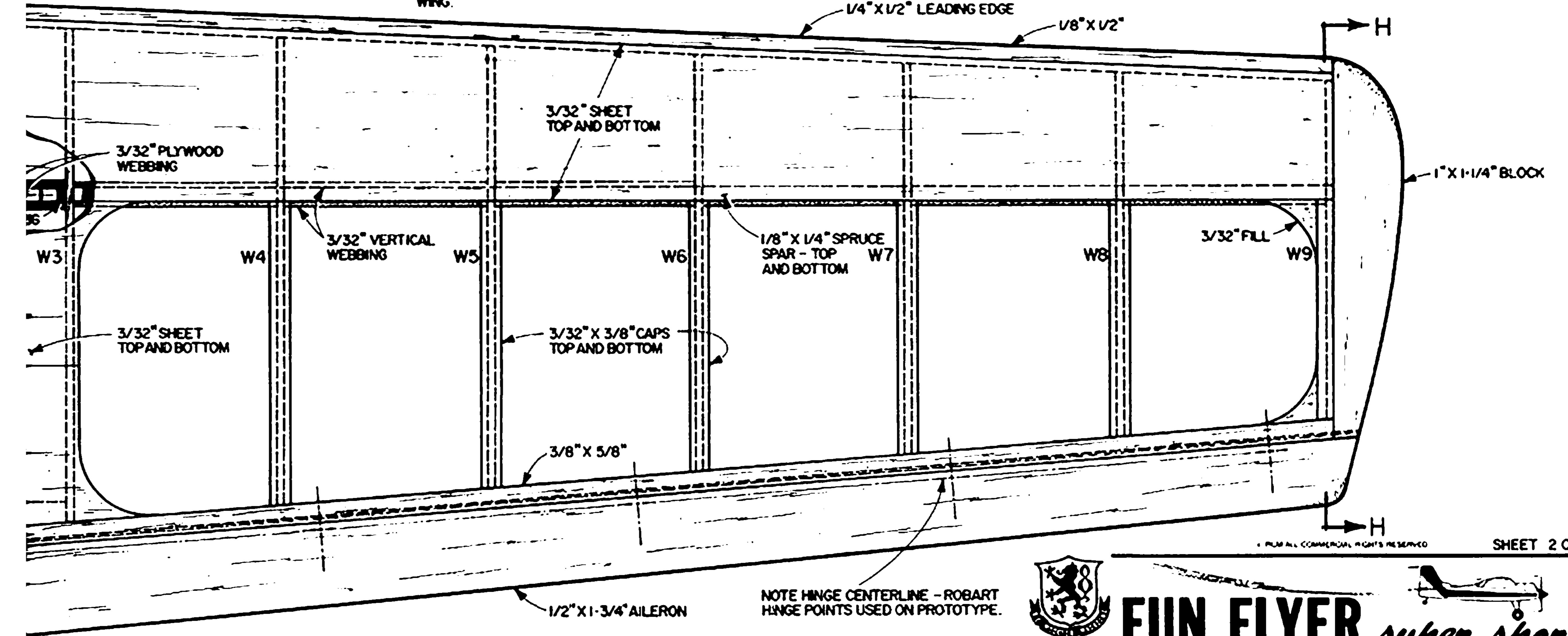
NOTE: GLUE 1/32" PLY SHIMS ON BOTH SIDES OF SPRUCE SPAR TOP AND BOTTOM. GLUE 3/32" PLY WEBBING TO ONE SIDE ONLY USING EPOXY. CUT AND INSTALL 5/16" OD BRASS TUBE IN RIB BAY AS SHOWN. NOTE ANGLE. MIX UP SLURRY OF EPOXY AND MICRO-BALLOONS AND FILL ENTIRE CAVITY. NOW EPOXY IN REMAINING PLY WEBBING.

SECTION F-F
1-1/2"



NOTE: ALL RIBS ARE 1/8" Balsa
2 OF EACH RIB

SECTION G-G



NOTE HINGE CENTERLINE - ROBERT
HINGE POINTS USED ON PROTOTYPE.



FUN FLYER *super sport*

DESIGNED BY JOE Mergen / PLANS BY JERRY SMITH

