

**R/G modeler**

**DQA 704**  
32 SPAN SINGLE CHANNEL  
FOR ESCAPEMENT OR PULSE  
020 E 9 12/64 R.C.M.

**STABILIZER**

3/32 SH

**MAIN  
GEAR  
PATTERN**

1/16 WIRE

JOIN ELEVATORS  
WITH DOWEL

1/32 X 1/4 X 2 1/4  
PLY HATCH RETAINER

1/32" PLY HATCH

**COX 020  
PEE WEE**  
SIDE MOUNTED

COX H THRUST  
020 PROP OR  
3 BLADE 020  
PROP

FIREWALL

TRIKE GEAR  
1/16 WIRE

RIGHT FUSELAGE  
SIDE ENDS HERE

BATTERY  
COMPARTMENT

1/4 X 1  
DOUBLER

1/4 SQ CROSSBRACE  
WOODSCREW EACH SIDE  
FOR RUBBER BAND  
HATCH HOLD-  
DOWN

DOWEL

DOWEL LOCATION FOR SINGLE  
L.G. VERSION

**BABCOCK  
BC 21  
RCVR &  
ESC**

FOAM

**R/C modeler**

**DQA 704**

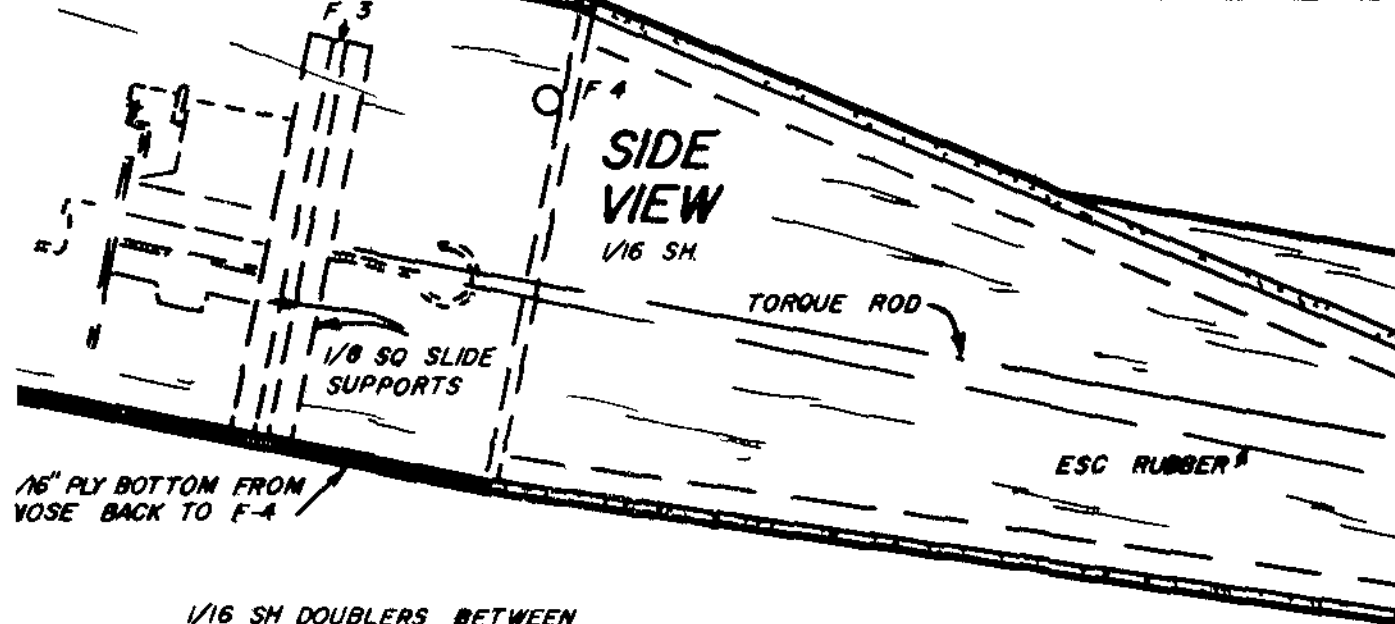
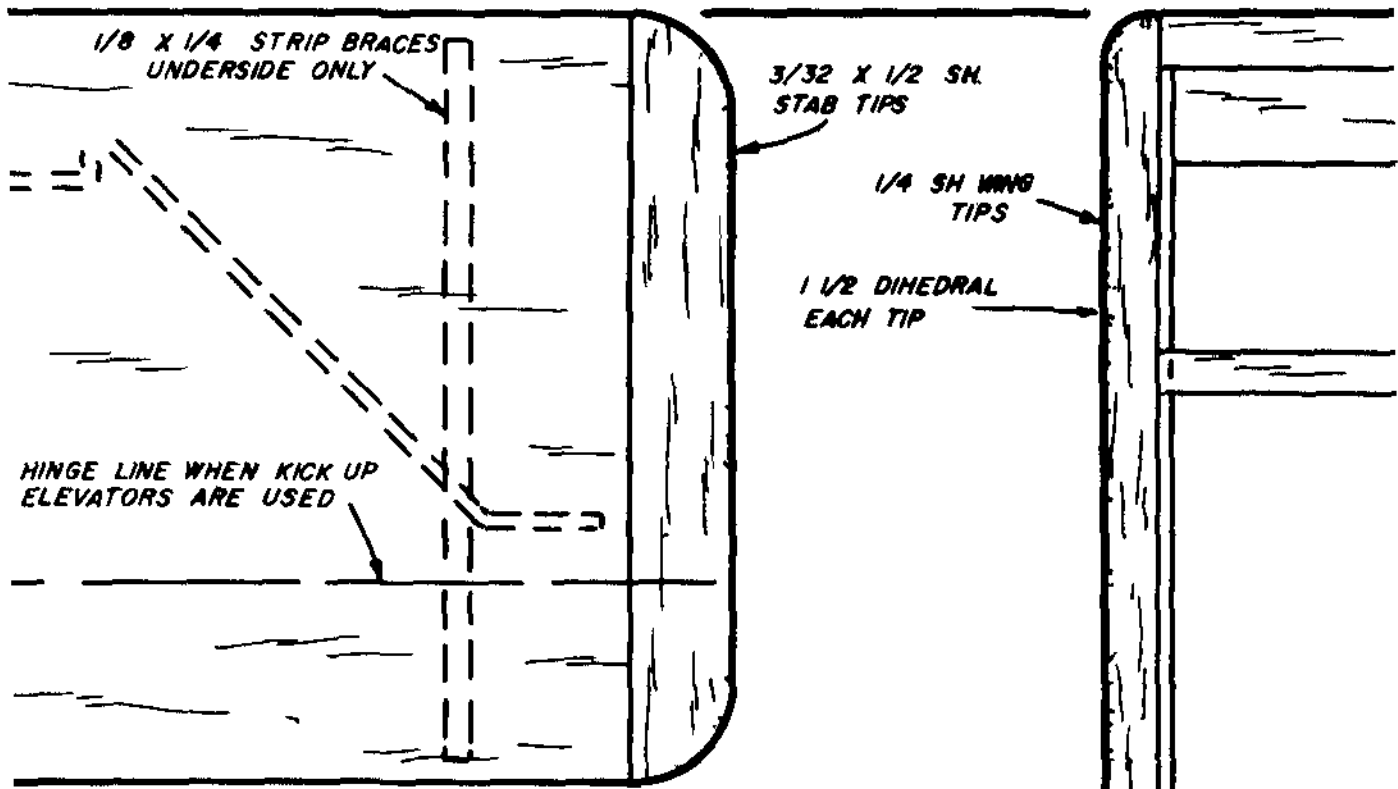
32 SPAN SINGLE CHANNEL

FOR ESCAPEMENT OR PULSE

020 E g

12/64 RCM

1 1/4 WHEELS



1/16 SH DOUBLERS BETWEEN  
FIREWALL & F 4

1/4 SQ LE

1/16 X 3/4 SH

LEFT  
WING  
PANEL

3/16 SQ SPARS

RI PATTERNS

MAKE 18 OF 1/16 SH.

USE DOTTED  
OUTLINE TO CUT  
2 RIBS EACH OF  
1/16 & 1/4 SH

1/16 SH TOP &  
BOTTOM T E

STANDARD ANTENNA OR CAN BE GLUED  
TO UNDERSIDE OF WING T E

FIN

1/16 HARD SH

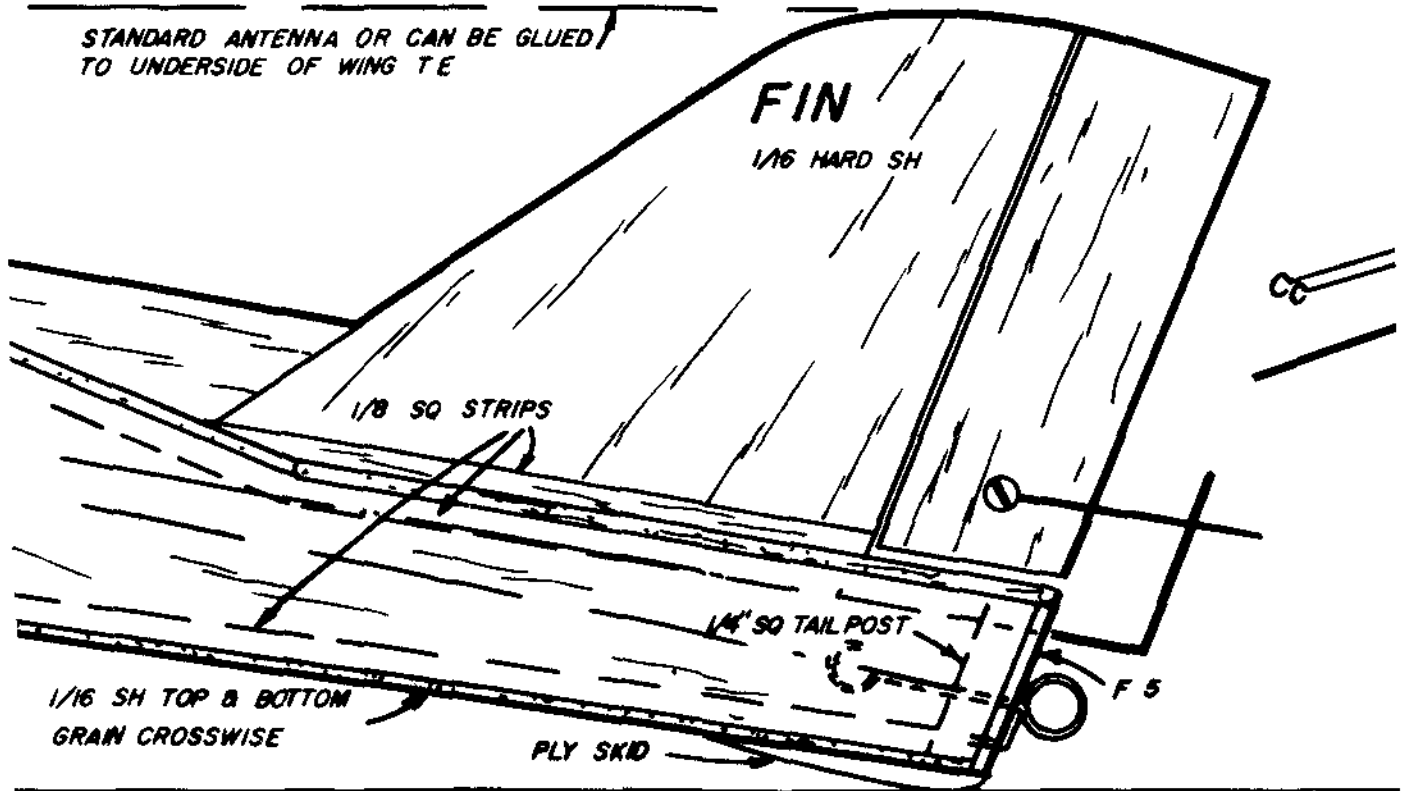
1/8 SQ STRIPS

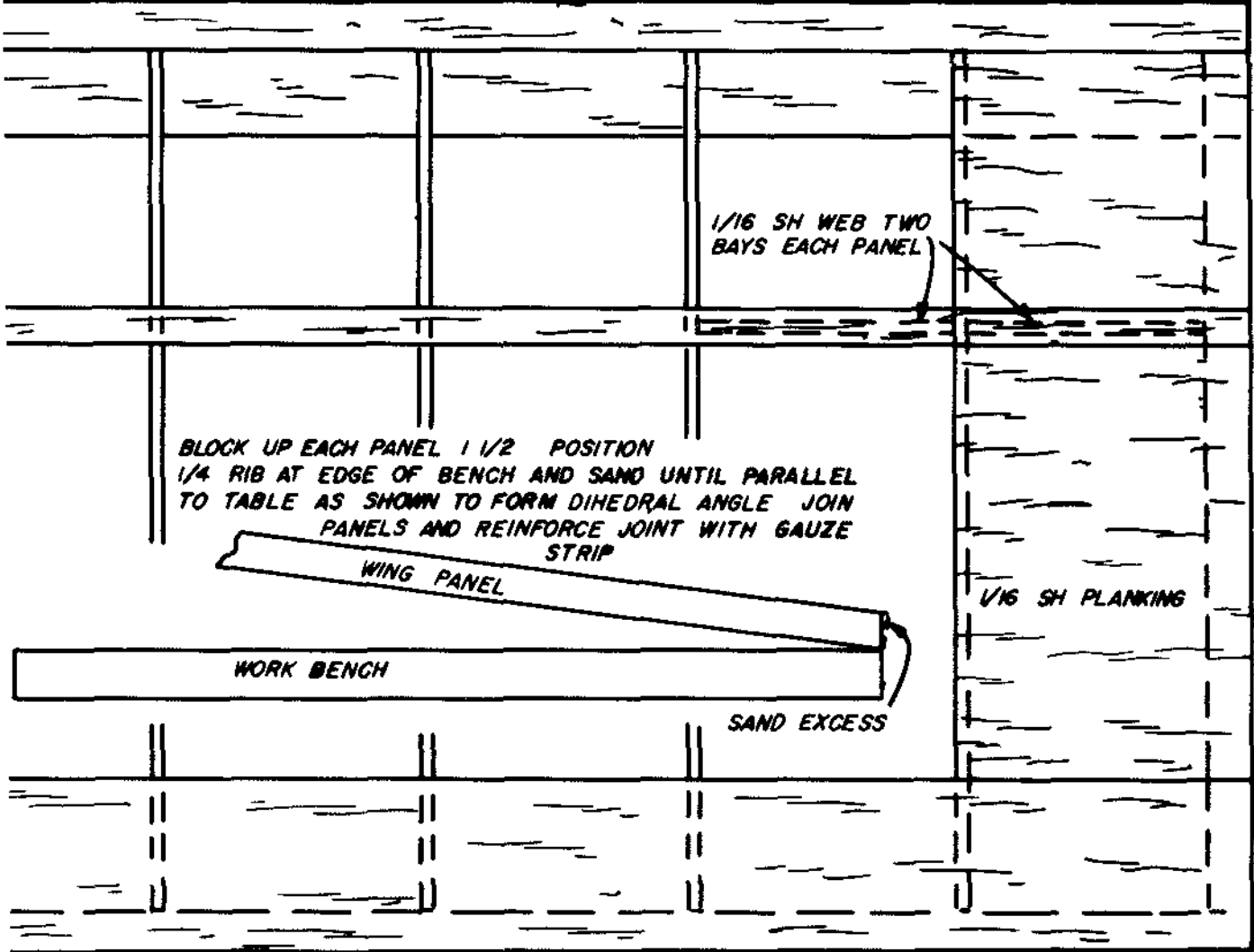
1/4 SQ TAIL POST

1/16 SH TOP & BOTTOM  
GRAIN CROSSWISE

PLY SKID

F 5





## BULKHEAD PATTERNS

